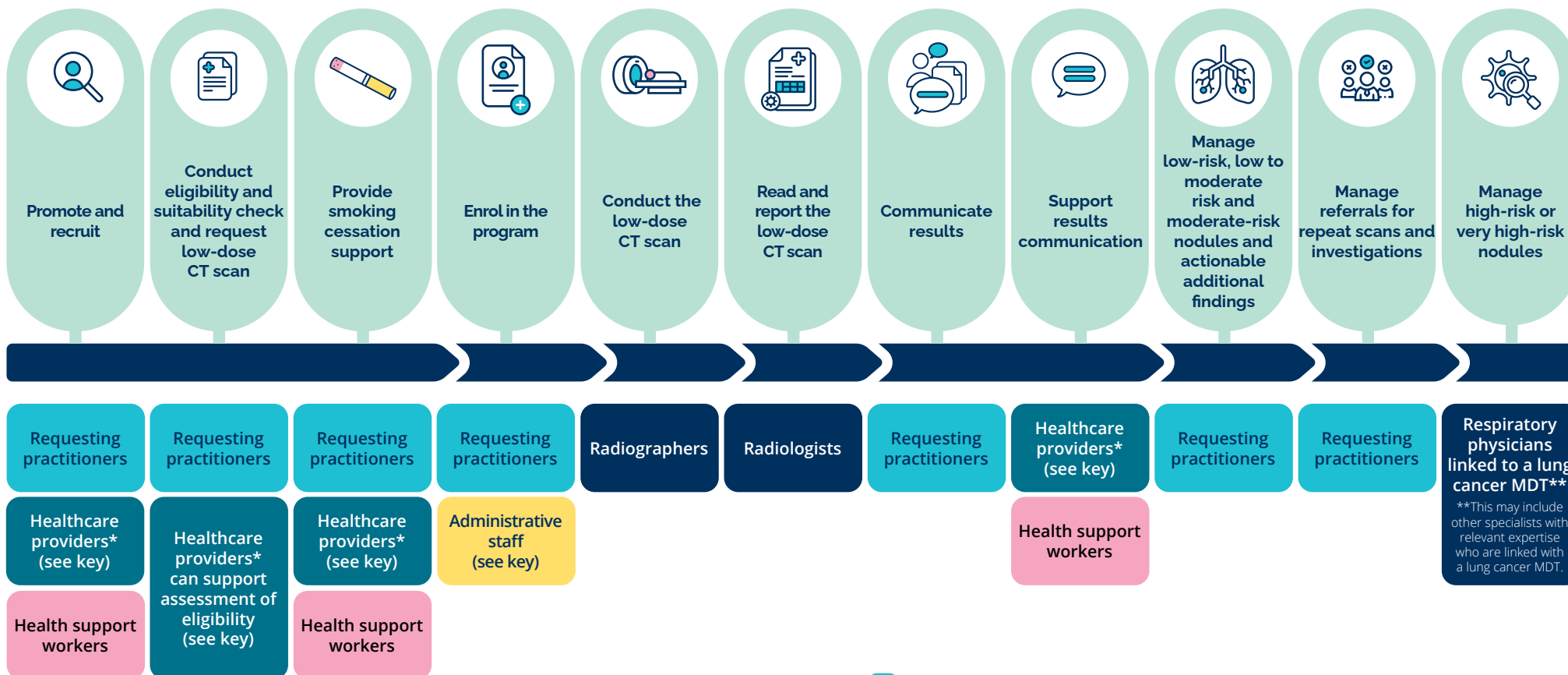




HEALTH WORKFORCE ROLES AND RESPONSIBILITIES



- Requesting practitioners:**
Healthcare providers authorised to request a low-dose CT scan, including general practitioners, nurse practitioners and other medical practitioners
- Healthcare providers *without authorisation to request a low-dose CT scan:**
*Registered nurse, registered nurses, practice nurses and enrolled nurses, Aboriginal and Torres Strait Islander health workers and practitioners, allied health professionals
- Health support workers:**
Aboriginal liaison officers, health support workers and smoking cessation specialists
- Administrative staff (based in primary care):**
Practice managers and administrative staff