

# PBS co-payment freeze

## What is it and who benefits?

### What's the PBS?

The Pharmaceutical Benefits Scheme (PBS) has provided Australians with low-cost medicines since 1948.

1948

### What's being frozen?



The **PBS patient co-payment** is the maximum price you can be charged for a PBS medicine.

The patient co-payment has been **frozen at 2024 rates** and will not increase due to annual indexation.

### Who benefits?

The PBS co-payment freeze means more people will save money on essential medicines.



**For Medicare cardholders**

A maximum of **\$31.60 per script** is locked in for the rest of 2025.



**For pensioners and other Commonwealth concession cardholders**

A maximum of **\$7.70 per script** is locked in for 5 years.

### How many medicines are listed on the PBS?

**Over 900** prescription medicines

for a range of health conditions.



### What else is new?

**Almost 300 PBS medicines**

are now available for 60-day prescriptions – saving you more money and time.

Life-saving medicines for

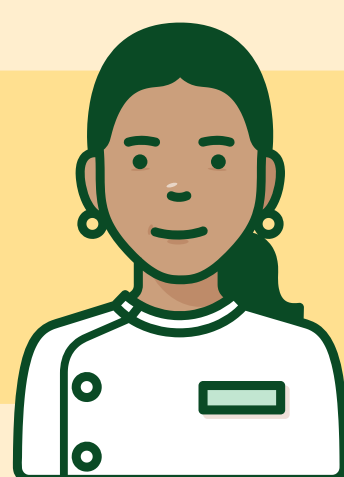
**prostate and breast cancer**

are now listed on the PBS.

### Who do I talk to about the cost of my medicines?



GP or health professional



Pharmacist

**For more information visit**  
**health.gov.au/cheapermedicines**

