

Western Sydney

PHN Fact sheet 2024





Snapshot^(b)

Total Population (ERP 2022):	1.07M
First Nations People (ERP 2022):	20.59K
Total Population Growth (2016 - 2022):	12.99%
Population Aged 65+ (ERP 2022):	290.36K
Population Growth Aged 65+ (2016 - 2022):	24.51%
Area Square kilometers:	765.72



Key Information

Need for Assistance ^(a)	Unemployment Rate ^(b)
4.92%	3.50%
English Proficiency ^(a)	
Not at all	2.13%
Not well	5.88%





Demographics^(b) (ERP 2022)



50.55%

Male



49.45%

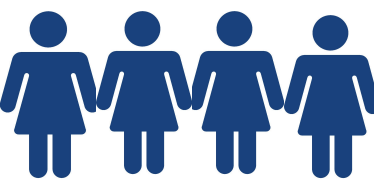
Female

Male



541.28K

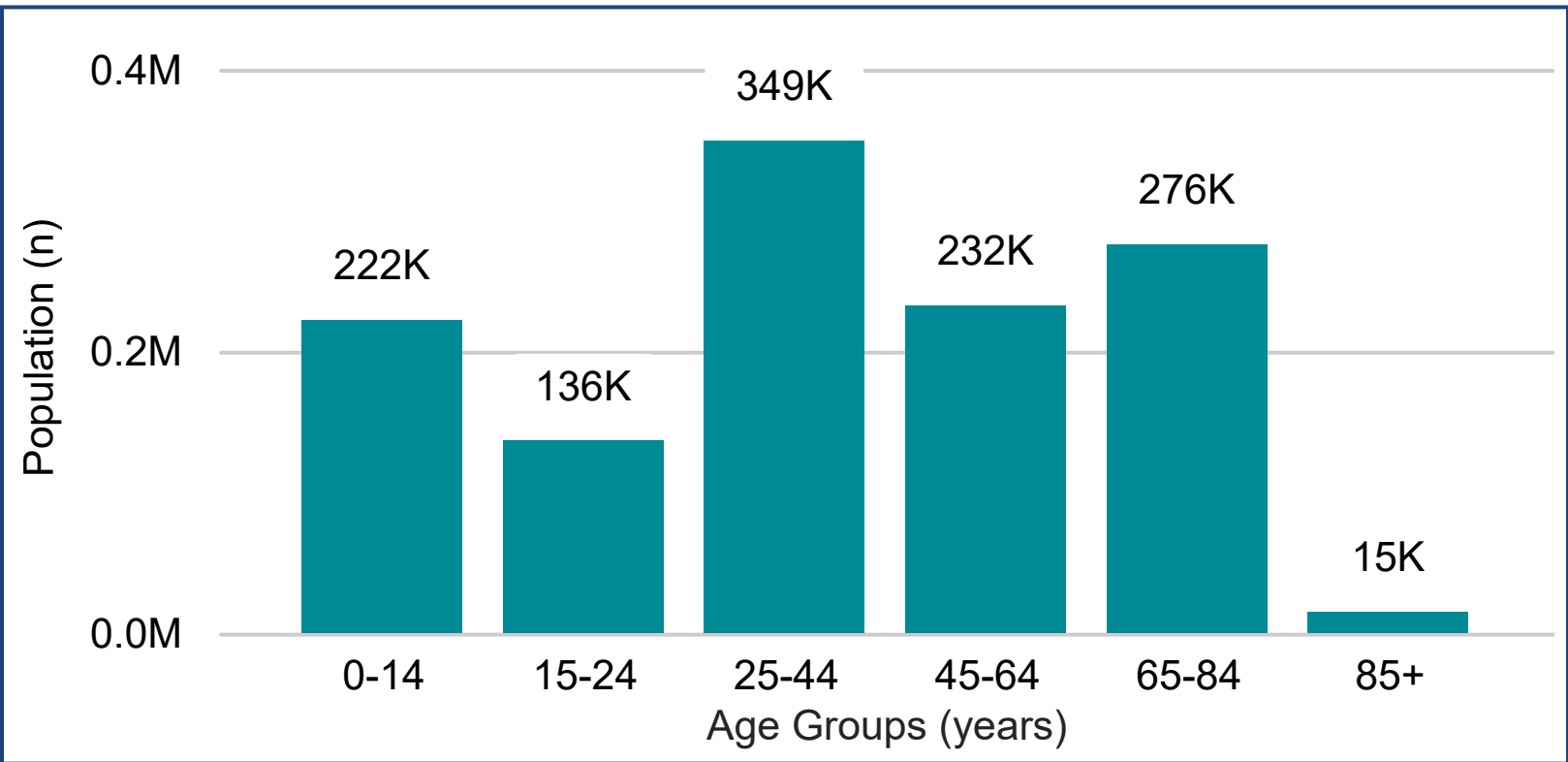
Female



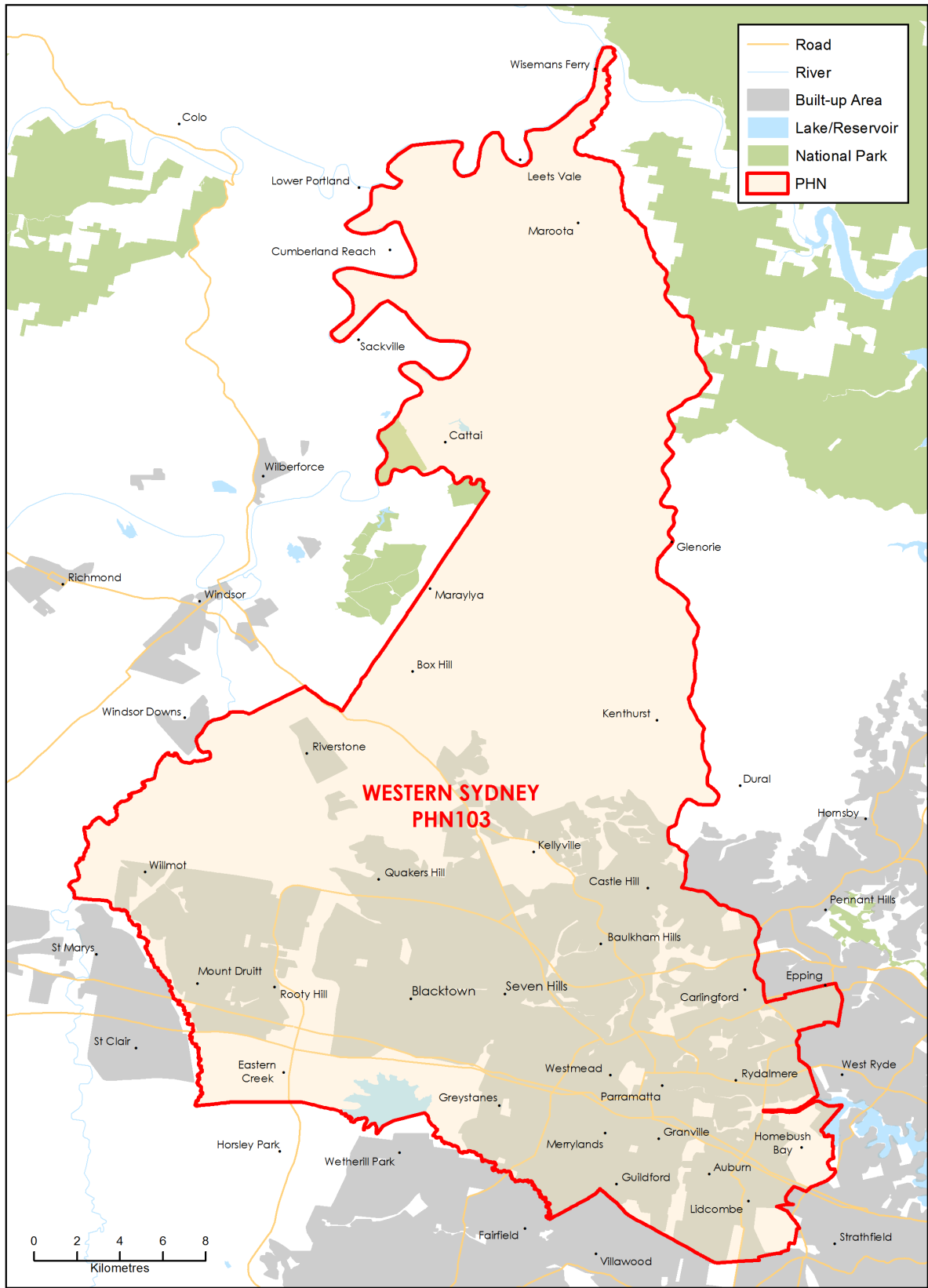
529.51K



Age^(b) (ERP 2022)



Map (2022)



Source: a - Australian Bureau of Statistics - Census of Population and Housing 2021 | b - PHIDU Social Health Atlas of Australia Data by Primary Health Network Dec 2023

ERP: Estimated Resident Population | **Need for Assistance:** [Core activity need for assistance \(ASSNP\)](#) | **English Proficiency:** [Proficiency in spoken English \(ENGLP\)](#) | [Australian Bureau of Statistics \(abs.gov.au\)](#)

Data has been obtained from a range of publicly available sources, and DoHAC does not take responsibility for data quality. **Last Updated:** May 2024