

Northern Sydney


PHN Fact sheet 2024

Snapshot^(b)

Total Population (ERP 2022):	926.86K
First Nations People (ERP 2022):	5.07K
Total Population Growth (2016 - 2022):	1.21%
Population Aged 65+ (ERP 2022):	381.34K
Population Growth Aged 65+ (2016 - 2022):	15.13%
Area Square kilometers:	889.80

Key Information

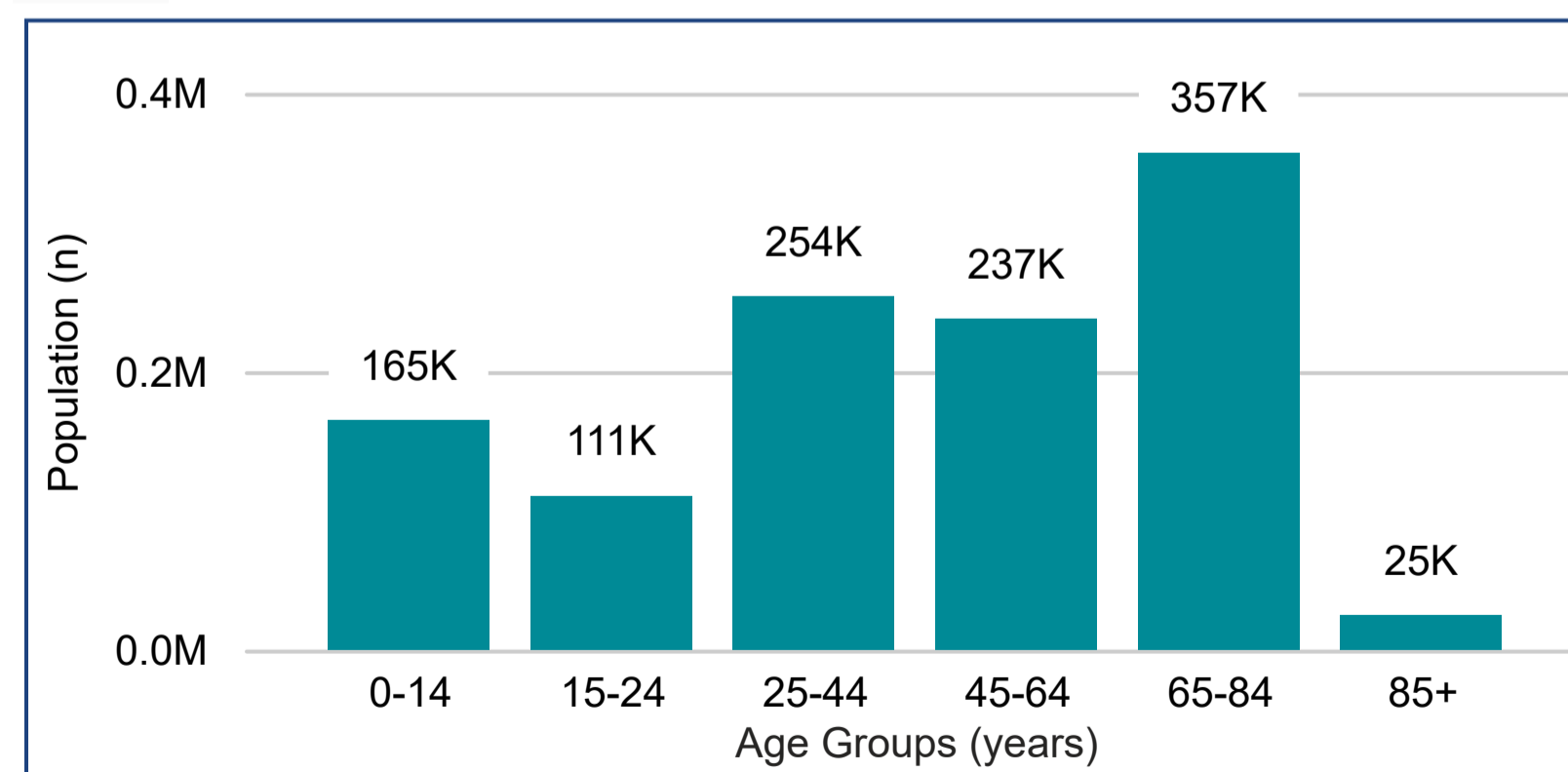
Need for Assistance^(a)	Unemployment Rate^(b)
3.95%	2.57%
English Proficiency^(a)	
Not at all	1.15%
Not well	3.12%



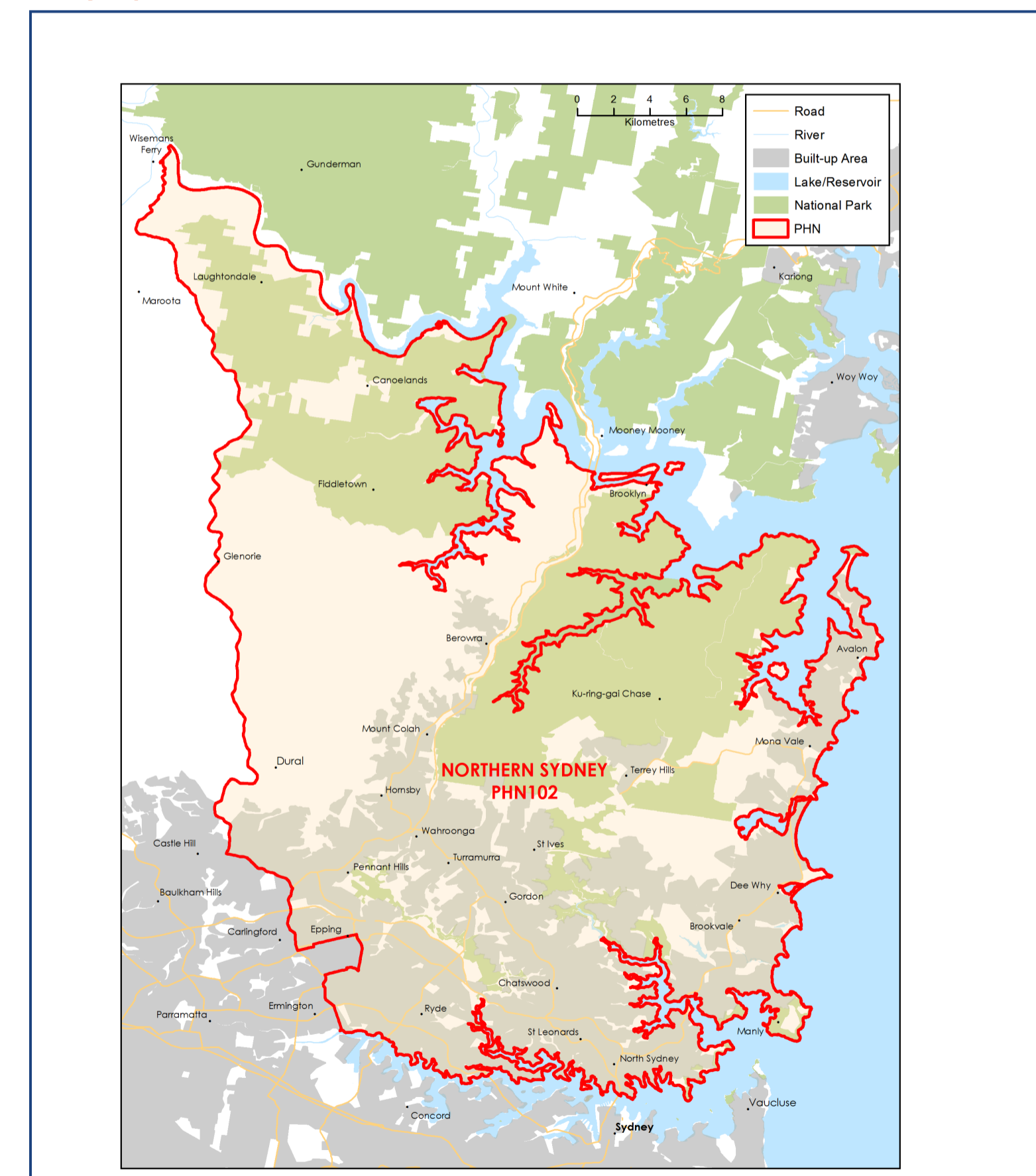
Demographics^(b) (ERP 2022)



Age^(b) (ERP 2022)



Map (2022)



Source: a - Australian Bureau of Statistics - Census of Population and Housing 2021 | b - PHIDU Social Health Atlas of Australia Data by Primary Health Network Dec 2023

ERP: Estimated Resident Population | Need for Assistance: Core activity need for assistance (ASSNP) | English Proficiency: Proficiency in spoken English (ENGLP) | Australian Bureau of Statistics (abs.gov.au)

Data has been obtained from a range of publicly available sources, and DoHAC does not take responsibility for data quality. Last Updated: May 2024