

Gold Coast



PHN Fact sheet 2024

Snapshot^(b)

Total Population (ERP 2022):	663.22K
First Nations People (ERP 2022):	15.46K
Total Population Growth (2016 - 2022):	12.11%
Population Aged 65+ (ERP 2022):	267.70K
Population Growth Aged 65+ (2016 - 2022):	27.89%
Area Square kilometers:	1.80K

Key Information

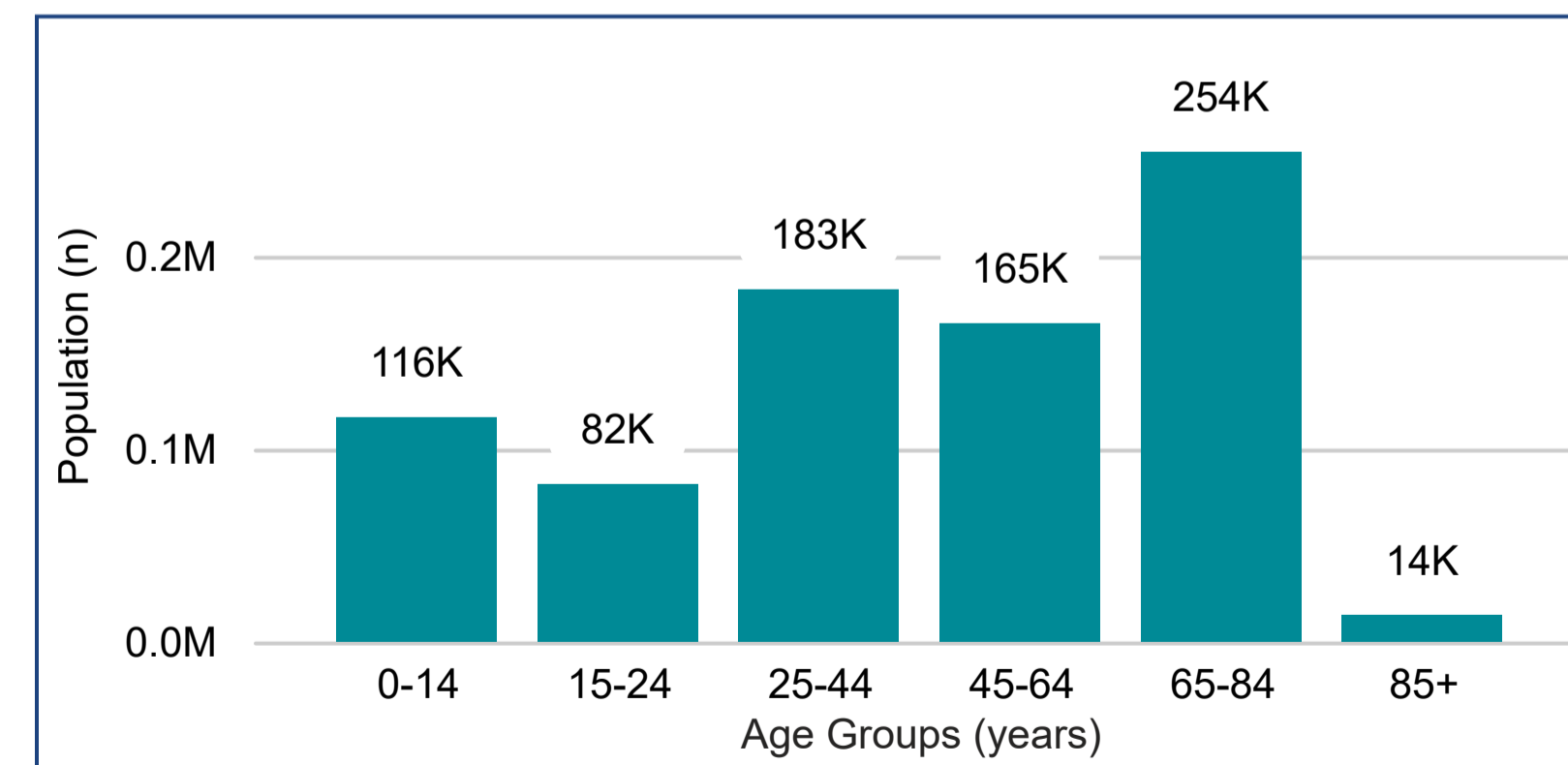
Need for Assistance^(a)	Unemployment Rate^(b)
5.47%	2.76%
English Proficiency^(a)	
Not at all	0.37%
Not well	1.25%

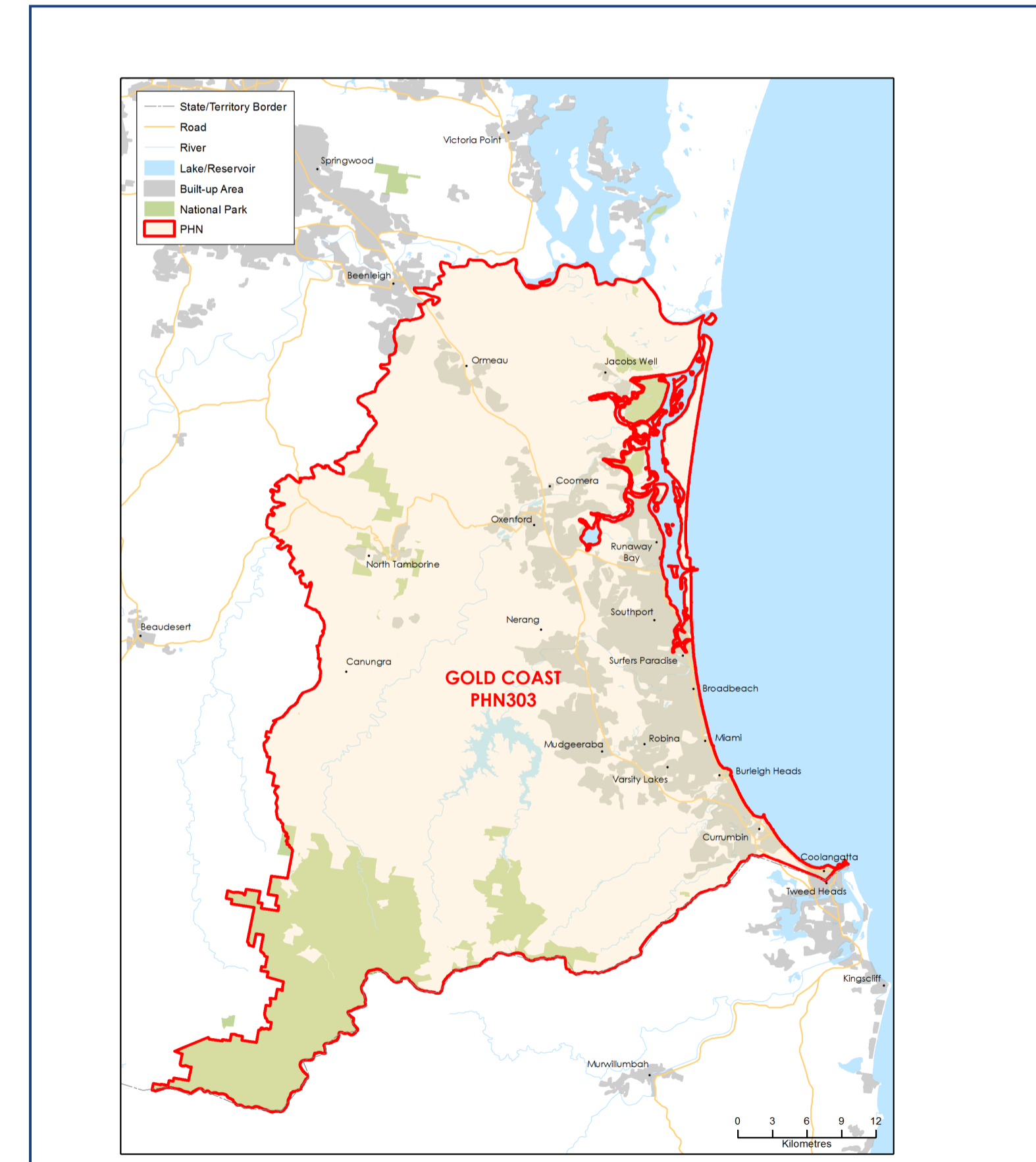
Demographics^(b) (ERP 2022)



Age^(b) (ERP 2022)



Map (2022)



Source: a - Australian Bureau of Statistics - Census of Population and Housing 2021 | b - PHIDU Social Health Atlas of Australia Data by Primary Health Network Dec 2023

ERP: Estimated Resident Population | Need for Assistance: Core activity need for assistance (ASSNP) | English Proficiency: Proficiency in spoken English (ENGLP) | Australian Bureau of Statistics (abs.gov.au)

Data has been obtained from a range of publicly available sources, and DoHAC does not take responsibility for data quality. Last Updated: May 2024