

# Eastern Melbourne

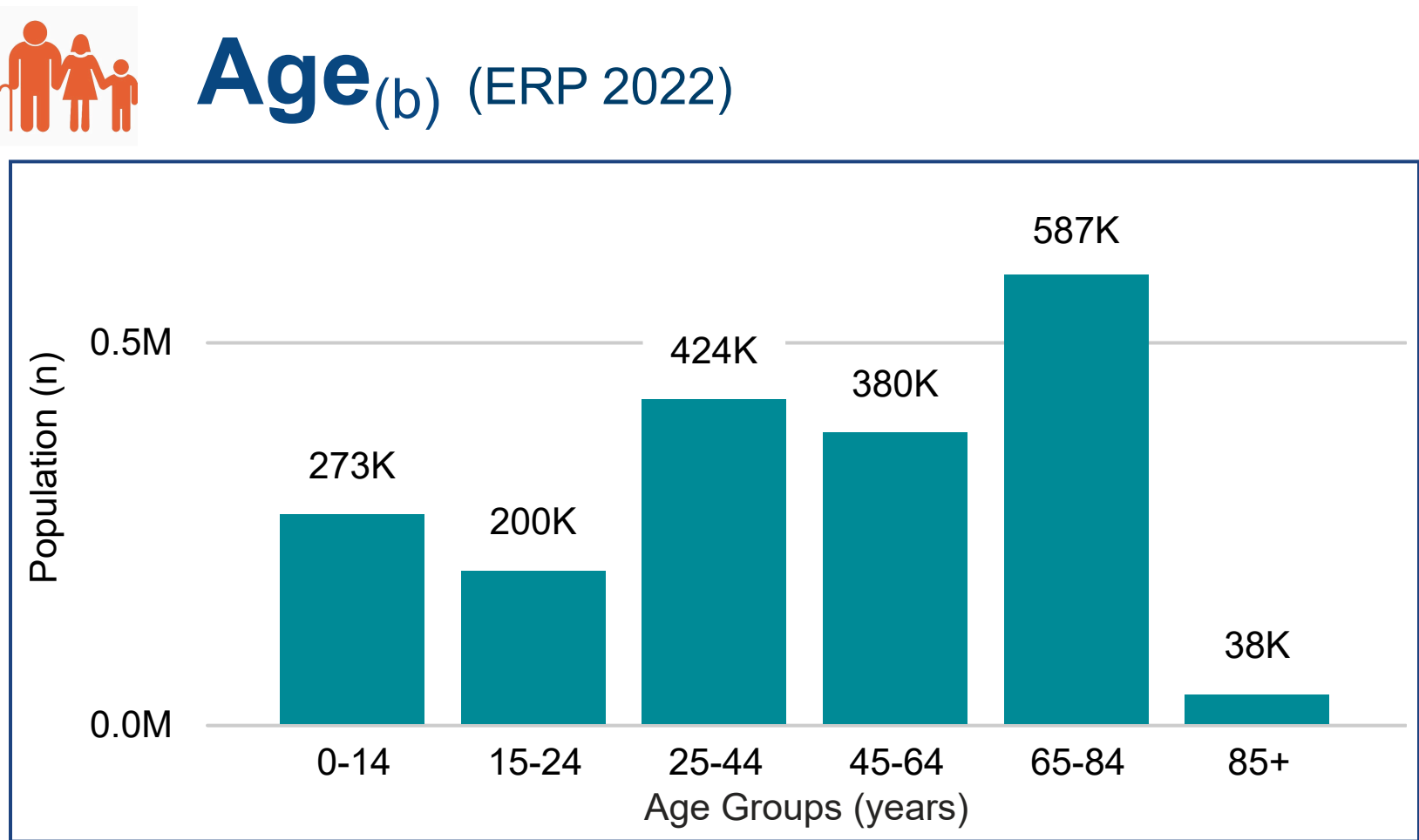
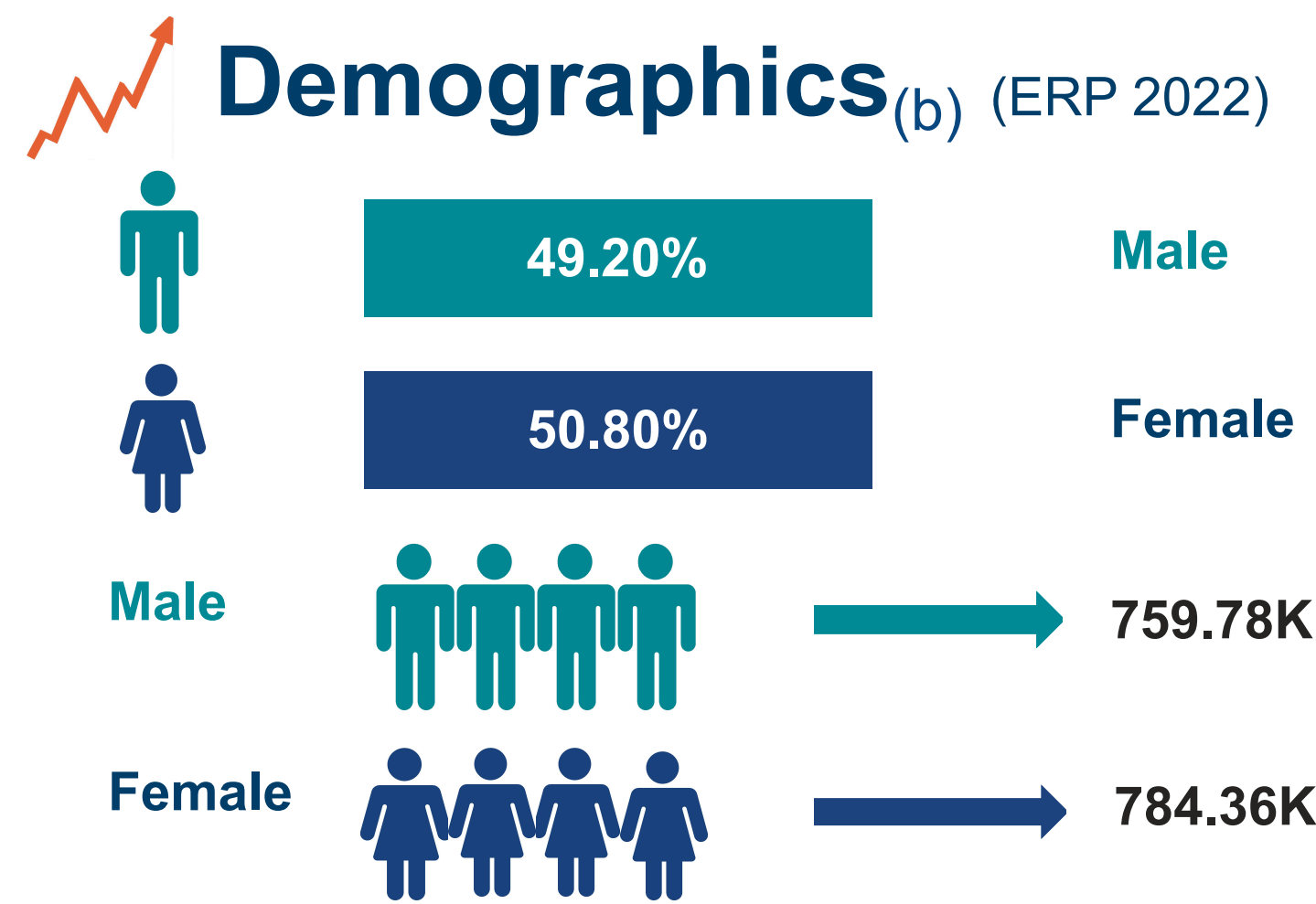
## PHN Fact sheet 2024

### Snapshot<sup>(b)</sup>

Total Population (ERP 2022):	1.54M
First Nations People (ERP 2022):	10.88K
Total Population Growth (2016 - 2022):	2.51%
Population Aged 65+ (ERP 2022):	624.77K
Population Growth Aged 65+ (2016 - 2022):	17.28%
Area Square kilometers:	3.96K

### Key Information

Need for Assistance <sup>(a)</sup>	Unemployment Rate <sup>(b)</sup>
5.61%	3.13%
English Proficiency <sup>(a)</sup>	
Not at all	1.30%
Not well	3.87%



### Map (2022)

