

Select your PHN

Central and Eastern Sydney

Central and Eastern Sydney



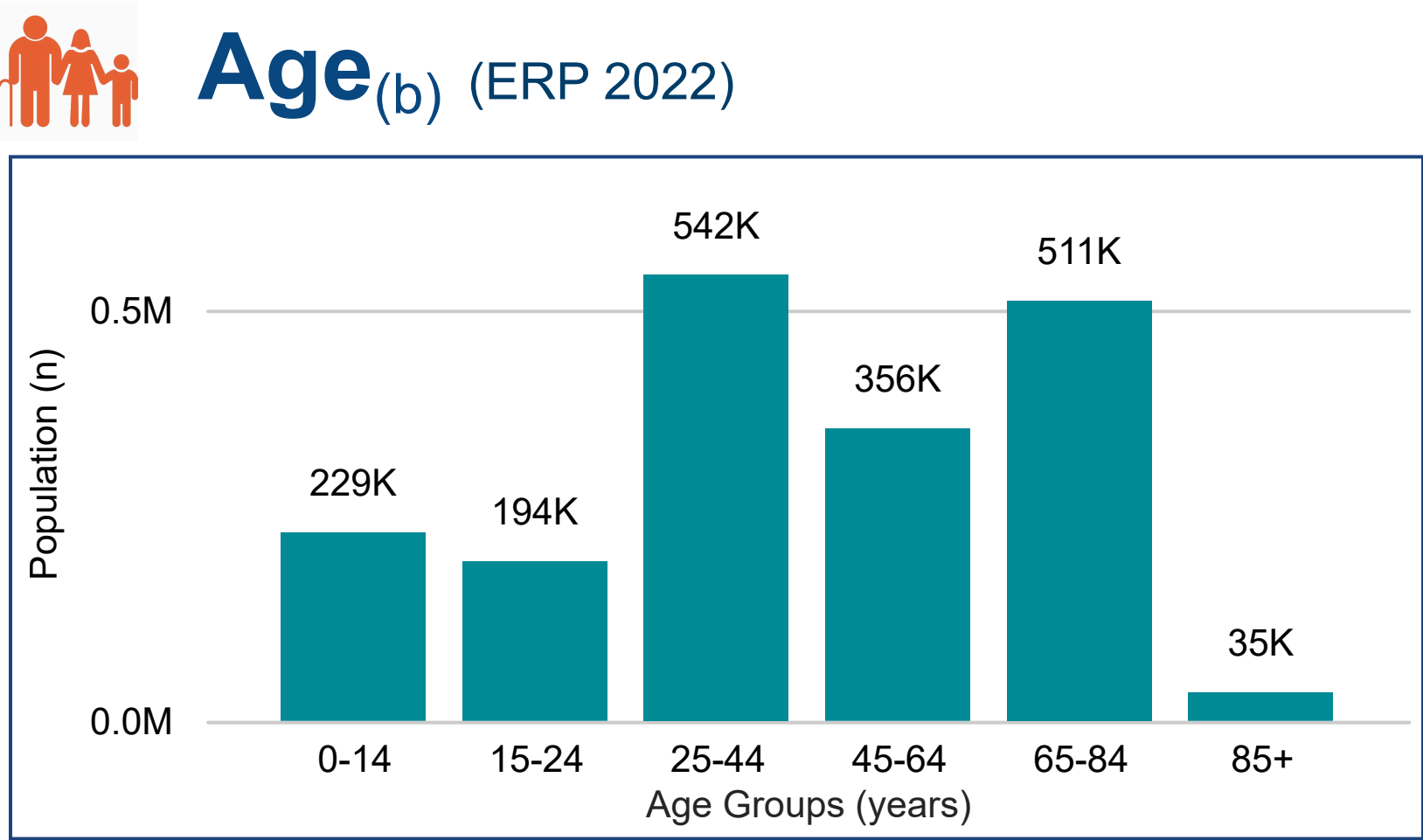
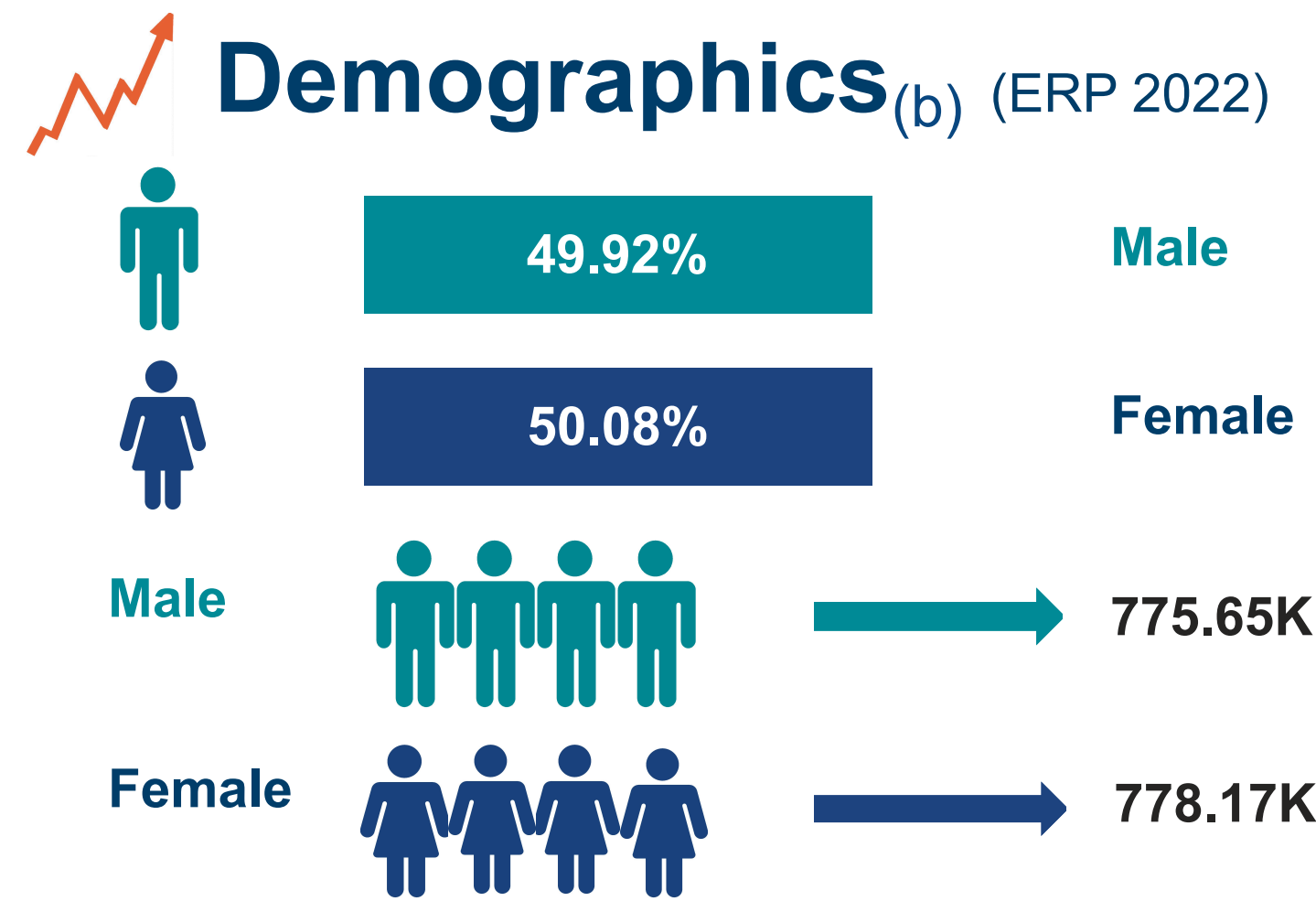
PHN Fact sheet 2024

Snapshot(b)

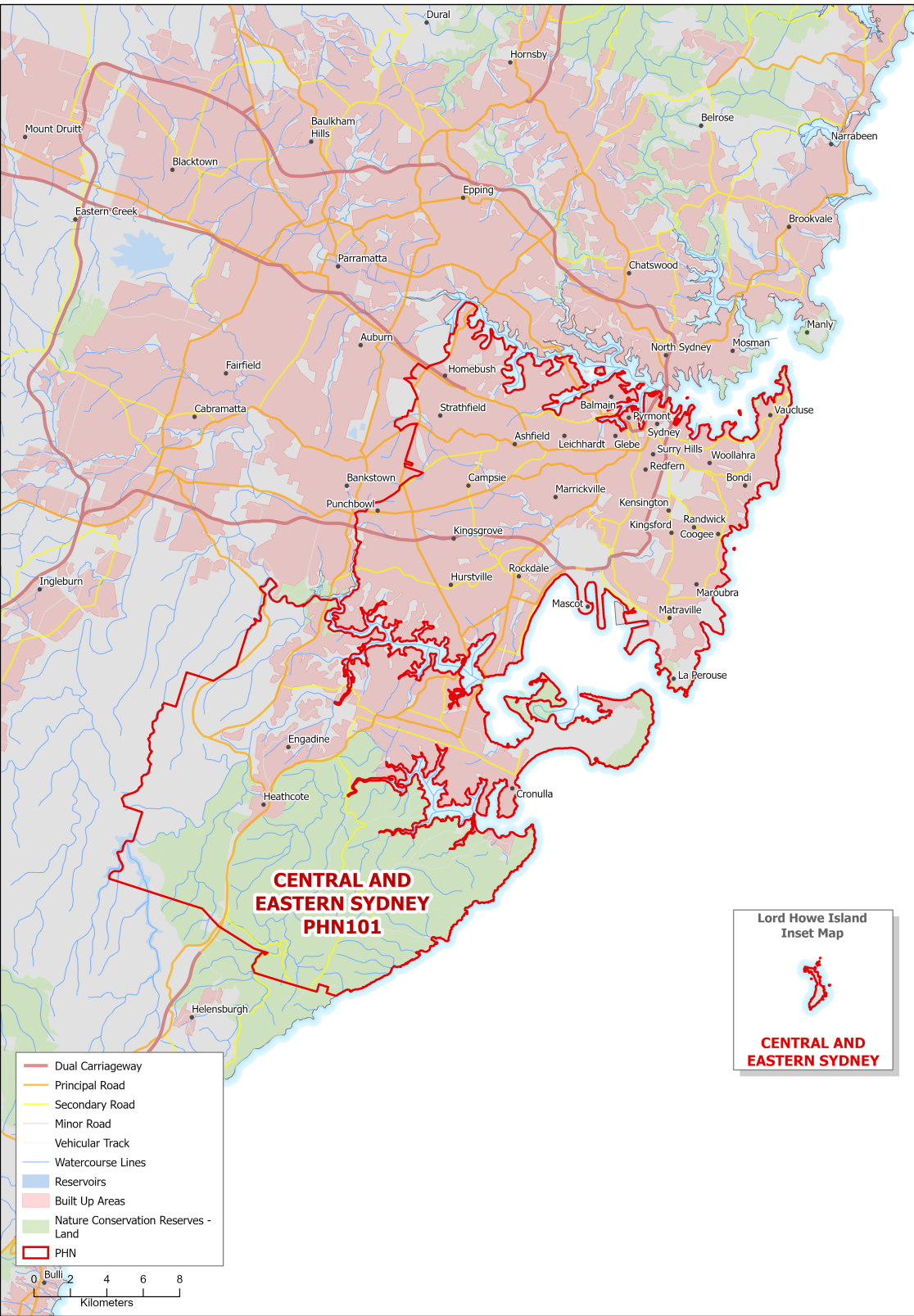
Total Population (ERP 2022):	1.55M
First Nations People (ERP 2022):	19.42K
Total Population Growth (2016 - 2022):	-0.92%
Population Aged 65+ (ERP 2022):	545.10K
Population Growth Aged 65+ (2016 - 2022):	13.31%
Area Square kilometers:	626.91

Key Information

Need for Assistance(a)	Unemployment Rate(b)
4.48%	3.02%
English Proficiency(a)	
Not at all	1.46%
Not well	4.83%



Map (2022)



Source: a - Australian Bureau of Statistics - Census of Population and Housing 2021 | b - PHIDU Social Health Atlas of Australia Data by Primary Health Network Dec 2023
ERP: Estimated Resident Population | Need for Assistance: Core activity need for assistance (ASSNP). | English Proficiency: Proficiency in spoken English (ENGLP).| Australian Bureau of Statistics (abs.gov.au).
Data has been obtained from a range of publicly available sources, and DoHAC does not take responsibility for data quality. Last Updated: May 2024