

# Brisbane South



## PHN Fact sheet 2024

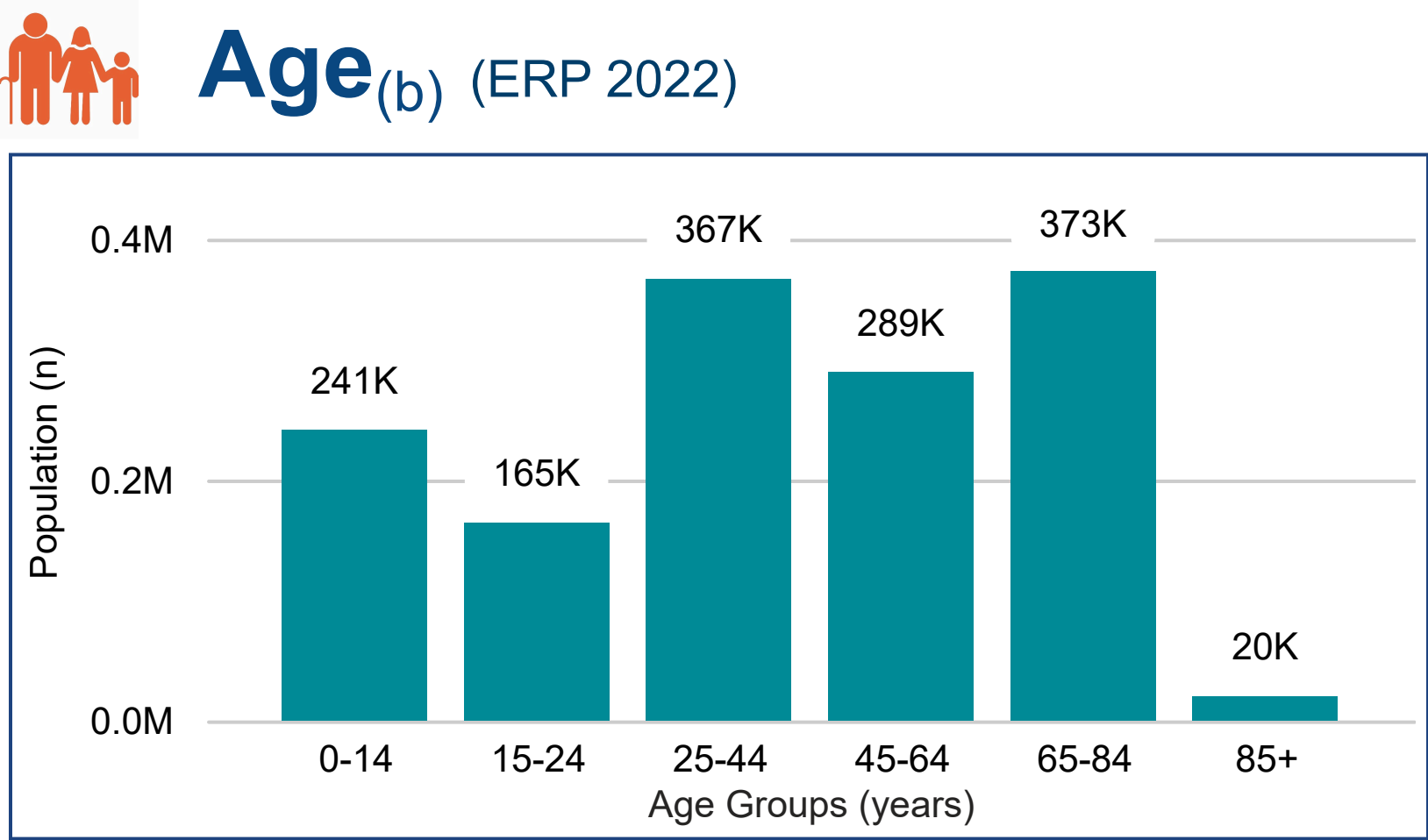
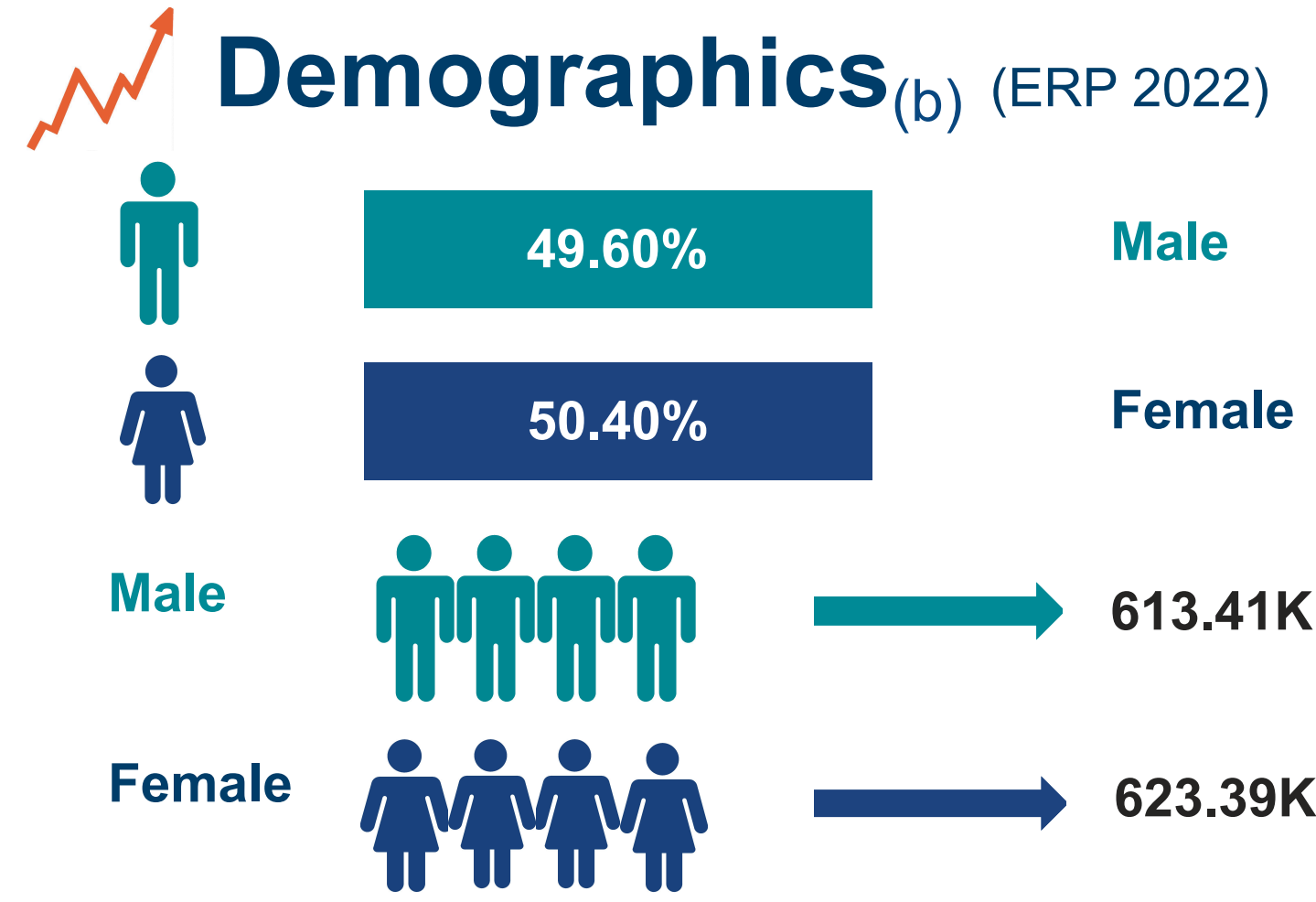
### Snapshot<sup>(b)</sup>

Total Population (ERP 2022):	1.24M
First Nations People (ERP 2022):	37.82K
Total Population Growth (2016 - 2022):	10.48%
Population Aged 65+ (ERP 2022):	393.00K
Population Growth Aged 65+ (2016 - 2022):	27.96%
Area Square kilometers:	3.77K

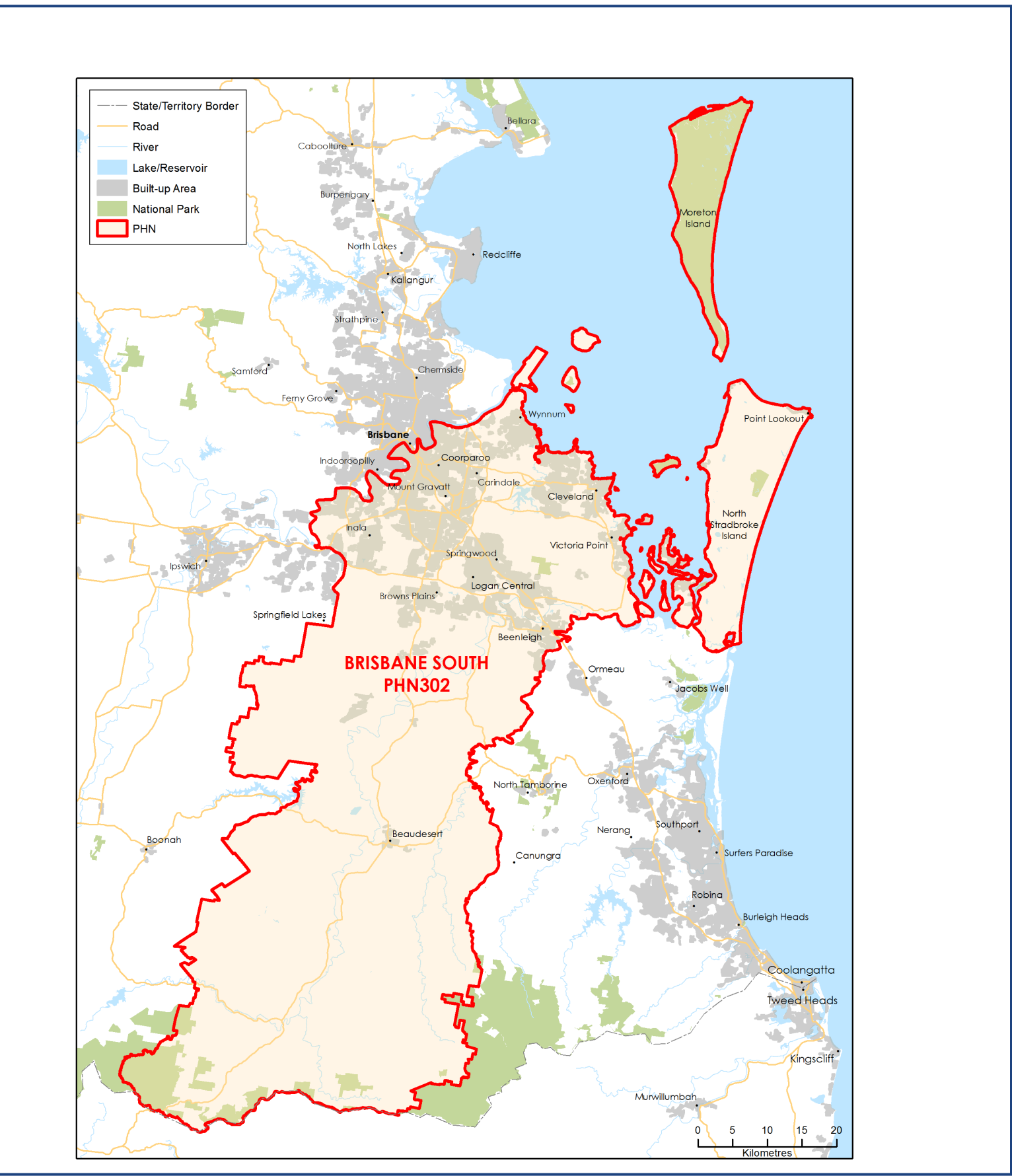
### Key Information

Need for Assistance <sup>(a)</sup>	Unemployment Rate <sup>(b)</sup>
5.58%	3.92%
English Proficiency <sup>(a)</sup>	
Not at all	0.92%
Not well	2.79%





### Map (2022)



**Source:** a - Australian Bureau of Statistics - Census of Population and Housing 2021 | b - PHIDU Social Health Atlas of Australia Data by Primary Health Network Dec 2023

**ERP:** Estimated Resident Population | **Need for Assistance:** [Core activity need for assistance \(ASSNP\)](#) | **English Proficiency:** [Proficiency in spoken English \(ENGLP\)](#) | [Australian Bureau of Statistics \(abs.gov.au\)](#)

Data has been obtained from a range of publicly available sources, and DoHAC does not take responsibility for data quality. **Last Updated:** May 2024