

Brisbane North



PHN Fact sheet 2024

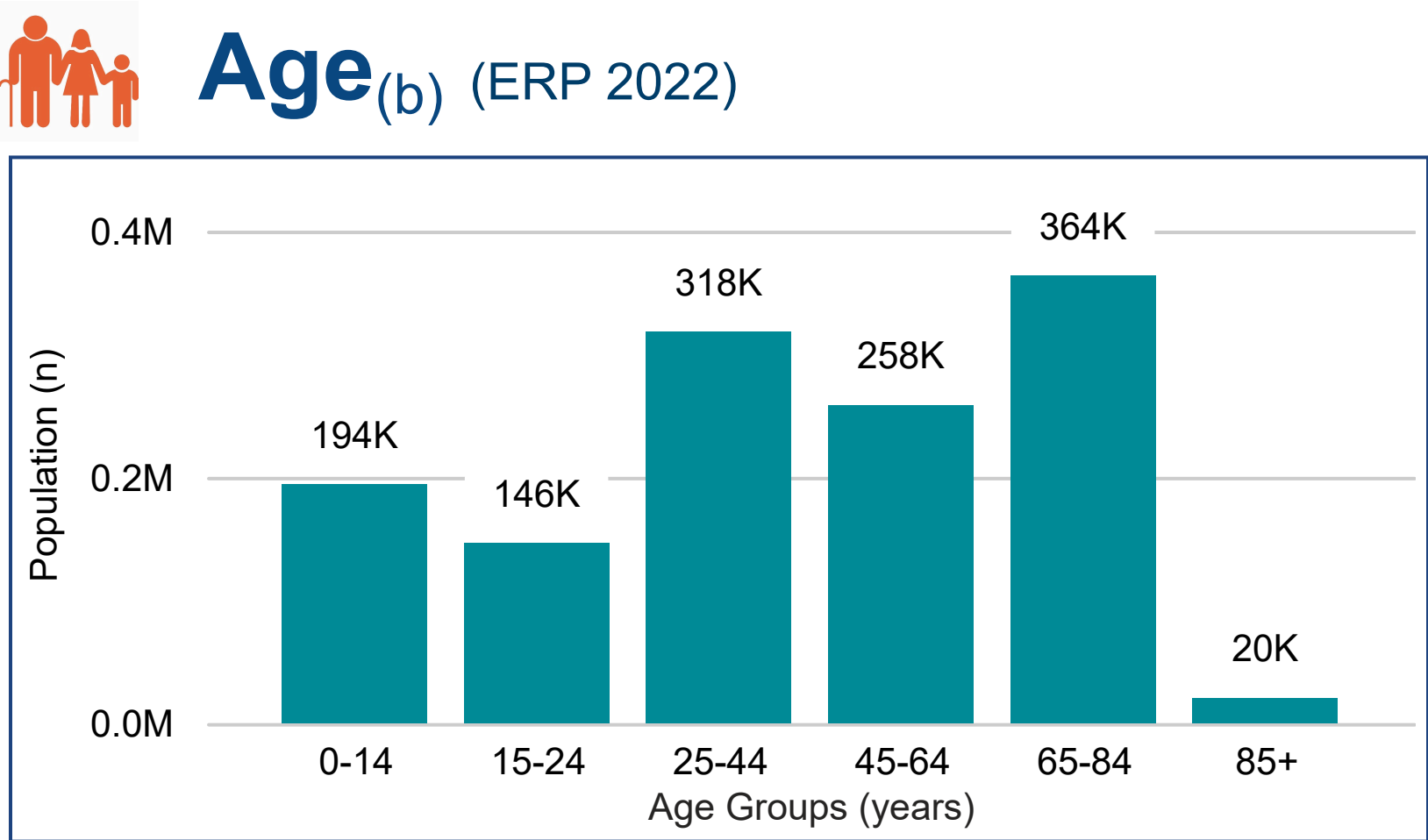
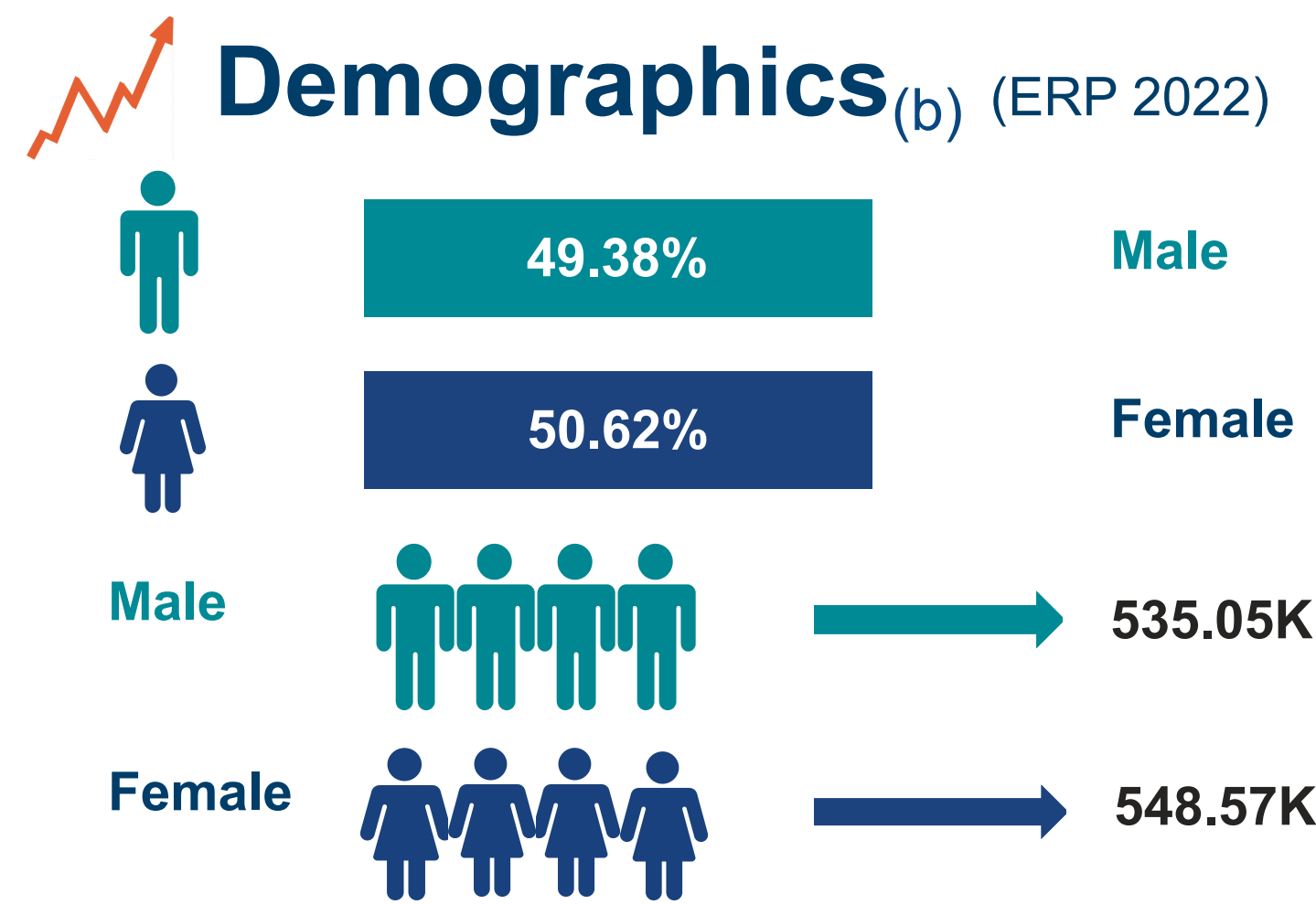
Snapshot^(b)

Total Population (ERP 2022):	1.08M
First Nations People (ERP 2022):	32.37K
Total Population Growth (2016 - 2022):	10.43%
Population Aged 65+ (ERP 2022):	383.91K
Population Growth Aged 65+ (2016 - 2022):	28.37%
Area Square kilometers:	3.95K

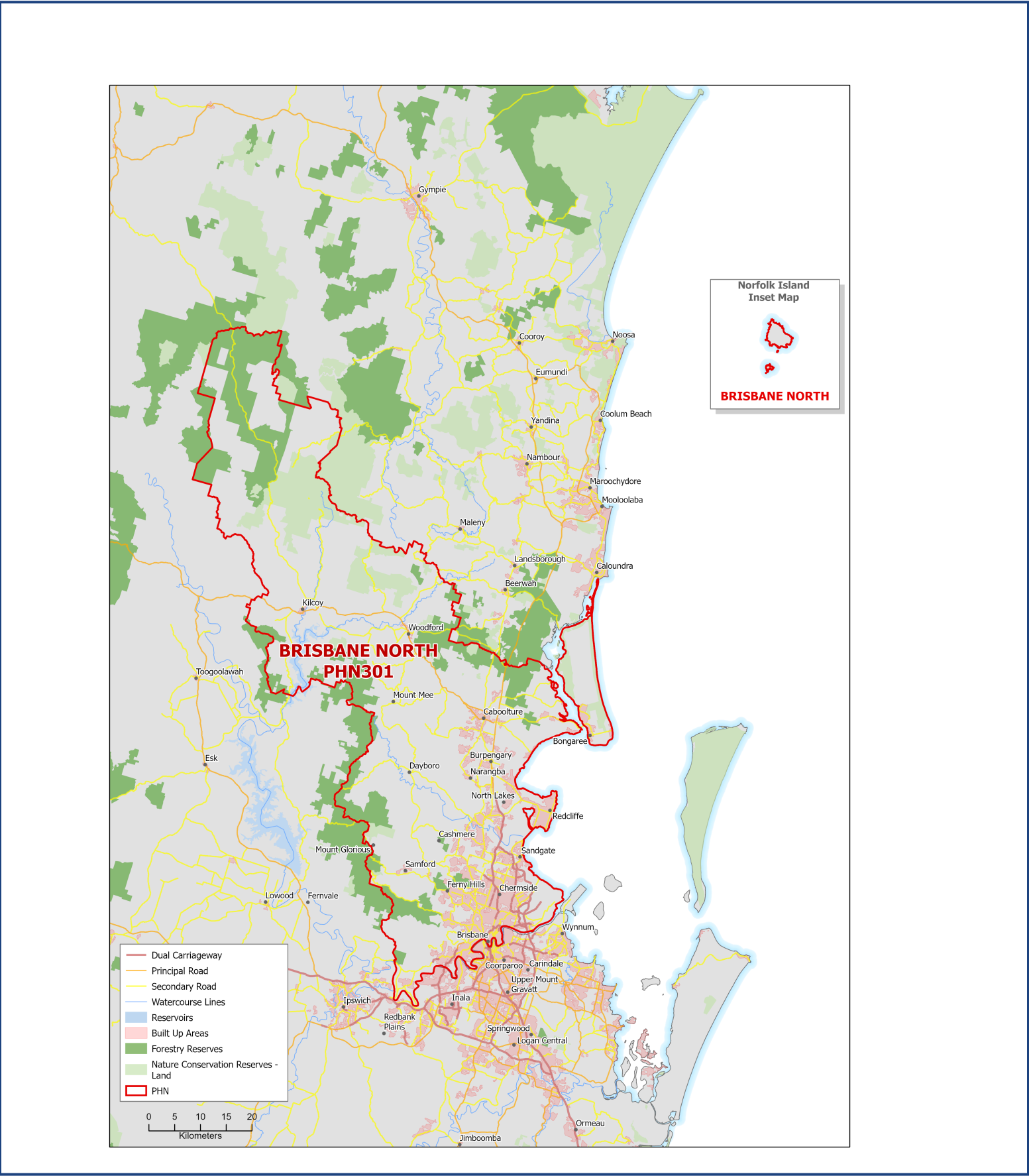
Key Information

Need for Assistance ^(a)	Unemployment Rate ^(b)
5.63%	3.44%
English Proficiency ^(a)	
Not at all	0.34%
Not well	1.00%





Map (2022)



Source: a - Australian Bureau of Statistics - Census of Population and Housing 2021 | b - PHIDU Social Health Atlas of Australia Data by Primary Health Network Dec 2023

ERP: Estimated Resident Population | **Need for Assistance:** [Core activity need for assistance \(ASSNP\)](#) | **English Proficiency:** [Proficiency in spoken English \(ENGLP\)](#) | [Australian Bureau of Statistics \(abs.gov.au\)](#)

Data has been obtained from a range of publicly available sources, and DoHAC does not take responsibility for data quality. **Last Updated:** May 2024