

Digital Transformation

Sector Partners

Digital Transformation and Delivery Division

Corporate Operations Group | Department of Health and Aged Care



www.health.gov.au

Meeting #42

07/06/2024



Australian Government

Department of Health and Aged Care

An elderly couple, a man and a woman, are shown from the chest up, smiling and looking at a smartphone held by the man. The man has white hair and wears glasses and a brown jacket. The woman has short grey hair and wears a brown sweater over a yellow collared shirt. They are in a home environment with a blurred background showing shelves and warm lighting.

WELCOME

Janine Bennett

Assistant Secretary (a/g)

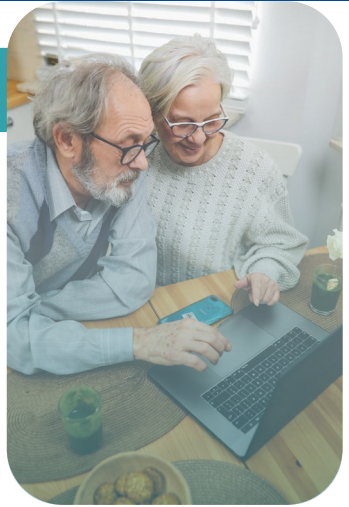
Digital Business and Sector Engagement Branch | Digital Transformation and Delivery Division

Corporate Operations Group | Department of Health and Aged Care

Digital transformation for the aged care sector

Agenda

Sector Partners #42



**Welcome &
Agenda**

Janine Bennett

State of Play

Janine Bennett

**Aged Care
Reforms
Sector Pulse
Survey**

Stevie George

**Introduction:
"Get to Know"
Survey**

Janine Bennett

**Playback:
Aged Care Visit**

**Janine Bennett
Jimmy Leishman
Ed Trick**

Close

Janine Bennett



Australian Government

Department of Health and Aged Care

State of Play Update

Janine Bennett

Assistant Secretary (a/g)

Digital Business and Sector Engagement Branch

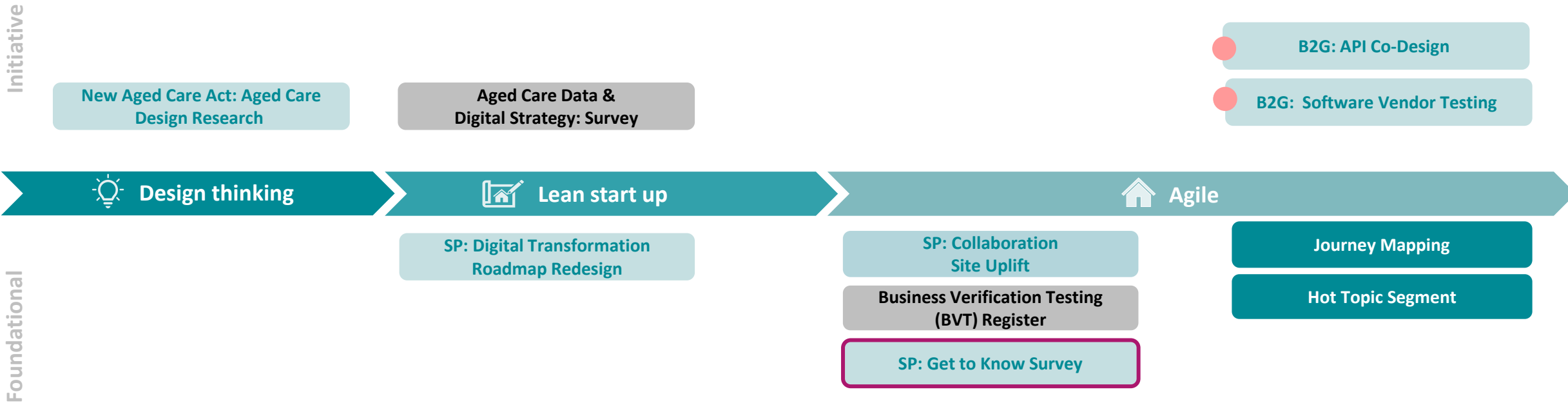
Digital Transformation and Delivery Division



Australian Government

Department of Health and Aged Care

Open co-design activities





Australian Government

Department of Health and Aged Care

[Home](#) [Topics](#) [Our work](#) [Resources](#)

[Home](#) > [Resources](#) > [Webinars](#)

Digital Transformation Tech Talk – 21 May 2024

In this webinar we looked at the Digital Transformation Program milestones, including recent updates to the Business to Government (B2G) Gateway, as well as presentations about data standardisation for the aged care sector and the ELDAC project.

Audience: Health sector

Webinar date: Tuesday, May 21 2024 2:00 pm AEST to 3:30 pm AEST

Webinar Link: [Watch the webinar](#)

Aged Care Digital Transformation Tech Talk Webinar Series



Recording and transcript



Tech Talk
Digital Transformation for the Aged Care sector webinar series

Digital Transformation and Delivery Division
Corporate Operations Group | Department of Health and Aged Care

health@gov.au
Sign back into
1:26:49

Transcript



Australian Government

Department of Health and Aged Care

[Home](#) > [Resources](#) > [Publications](#)

Budget 2024-25: Budget overview

This fact sheet provides an overview of the 2024-25 Budget. It outlines measures to strengthen Medicare, ensure Australians are fit and healthy, strengthen the quality of aged care, and make medicines cheaper.



Budget 2024-25

Budget 2024-25

Department of Health and Aged Care

BUDGET OVERVIEW

Strengthening Medicare

Boosting the number and capacity of Medicare Urgent Care Clinics, making health care more responsive and accessible for women, and ensuring mental health care meets the needs of every individual.

More Australians will have access to care for urgent, but not life-threatening, conditions. The Budget is growing the national network of Medicare Urgent Care Clinics by 29 (to a total of 67) and providing additional support for clinics located in regional, rural and remote areas (\$227m). This will help take pressure off stretched hospital emergency departments.

Using hospital outreach services in the community and more virtual care services, older Australians will get the health care and support they need in a safe and comfortable environment when it isn't necessary for them to stay in hospital, freeing up beds for other patients (\$882.2m).

A \$361 million package puts mental health at the heart of a stronger Medicare. Australians will get the right level of care for their level of need. Measures to shift away from a one-size-fits-all approach and relieve pressure on the Better Access initiative include:

- a new national early intervention service that anyone can access for free, whenever they need it (\$163.9m)
- an upgraded nationwide network of 61 Medicare Mental Health Centres to offer free, walk-in access to mental health care professionals for adults with more complex mental health needs (\$29.8m)
- funding Primary Health Networks to work in partnership with general practices to commission mental health workers to offer wraparound care for people with high needs in between medical appointments (\$71.7m)
- a new national peer workforce association will help to mobilise, professionalise and unlock the potential of this all-important workforce (\$7.1m)

Changes to MRI licencing agreements will expand access to Medicare funded services, almost tripling the number of fully Medicare eligible MRIs since 2022, from 227 to 620 machines (\$69.8m).

Medicare rebates for nuclear medicine imaging will receive a one-off boost and then rise each year to improve access and affordability (\$92.8m).

Rebates for many common pathology tests, including for infertility/pregnancy and tissue pathology, will rise each year for the first time in 25 years (\$174.1m) and COVID-19 tests will be permanently added to Medicare rebates.

Women with complex gynaecological conditions like 2 new Medicare rebates for longer gynaecologist consultations.

Endorsed midwives will provide longer consultations: the birth of a child (\$56.5m). There will be more access insurance for midwives (\$3.5m) which will improve the First Nations mothers.

Free period products will be given to First Nations women going through menopause will have better treatment support for families grieving miscarriage (\$7m).

A virtual contraception decision-making tool will support practitioners providing contraceptive counselling (\$1.1m) will undertake training to deliver long-acting reversible Outreach health care in women's crisis accommodation to support women and children fleeing family, domestic violence.

To boost the supply of health care in areas of shortage \$17.4 million to support health services at risk of closure and Rural Workforce Agencies will work with local colleges to get the care they need, close to home.

Charles Darwin University will be funded to establish Northern Territory from 2026 (\$24.6m), and will be in allocation of 40 commencing medical Commonwealth The Northern Territory Medical Program will also grow 36 students a year to start from 2024 (\$4.7m). These and retain a locally trained medical workforce equipped NT's unique health challenges.

The iconic Royal Flying Doctor Service (RFDS) will be even when emergency strikes in the bush, world-class For almost 100 years, the RFDS has provided emergency care services to anyone in rural and remote Australia. RFDS to provide its primary care and dental services to remote communities (\$74.6m).

Total strengthening Medicare investment \$1.6 billion

Total new investments

\$10.7 billion

Total new health investments

\$8.5 billion

- \$2.8 billion Strengthening Medicare
- \$4.2 billion

Downloads

Budget 2024-25: Budget overview

[Download PDF](#) - 232.8 KB - 4 pages

[Download Word](#) - 147.58 KB - 2 pages

We aim to provide documents in an accessible format. If you're having problems using a document with your accessibility tools, [please contact us for help](#).

Publication date: 14 May 2024



Aged Care Reforms Sector Pulse Survey

Stevie George

Director (a/g)

Aged Care Communication and Change Branch
People, Communication and Parliamentary Division
Corporate Operations Group | Department of Health and Aged Care



The **Aged Care Reforms Sector Pulse Survey** is your opportunity to:

- tell the Department how things are going with our program of aged care reforms and
- what support you need from us to help you transition.



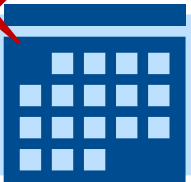
Engagement Hub Get Involved website



We want to hear from:

aged care providers, workers and stakeholders

including those who provide data, digital and technological services to the aged care sector.



Survey opens **3-14 June 2024**





Introduction: Sector Partners "Get to Know" Survey

Digital Transformation Sector Partners

Janine Bennett

a/g Assistant Secretary

Digital Business and Sector Engagement Branch

Digital Transformation and Delivery Division



"Get to Know" Survey



We'd like to get to know you better!

Our Sector Partners "Get to Know" survey is launching soon.

The survey should take under 10 minutes to complete.

Completing the survey is one of the most important contributions you can make to help shape the future of the group.

You'll be helping us:

- understand our Sector Partners community better
- improve our sessions and provide more of the content you want
- better plan our aged care activities and initiatives.

**Keep an eye on
your inbox**

You'll each receive
an invitation to
complete the
survey via email.



Playback: Aged Care Visit

Jimmy Leishman & Ed Trick

Co-Founders

TeaTime

Janine Bennett

Assistant Secretary (a/g)

Digital Business and Sector Engagement Branch

Digital Transformation and Delivery Division



Playback: Aged Care Visit



Playback: Aged Care Visit



Playback: Aged Care Visit



Playback: Aged Care Visit



Q&A

Have a question?

Put your virtual hand up to ask your question directly to our presenters or use the Webex chat space.



Australian Government

Department of Health and Aged Care



THANK YOU

NEXT MEETING:

11am, Friday 21 June

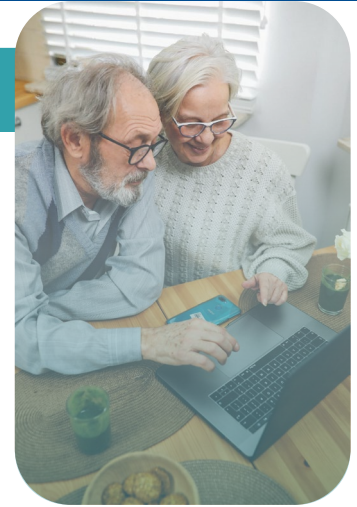


DTSectorPartners.health.gov.au

Digital transformation for the aged care sector

Agenda

Sector Partners #42



5 min

Welcome &
agenda

Janine Bennett

5 min

State of Play
update

Janine Bennett

10 min

Aged Care
Reforms
Sector Pulse
Survey

Stevie George

5 min

Introduction:
Get to Know
Survey

Janine Bennett

25 min

Playback:
Teatime Sector
Partner
Excursion

TBA

10 min

Close

Janine Bennett



Australian Government

Department of Health and Aged Care