



Copyright

© 2024 Commonwealth of Australia as represented by the Department of Health and Aged Care.

This work is copyright. You may copy, print, download, display and reproduce the whole or part of this work in unaltered form for your own personal use or, if you are part of an organisation, for internal use within your organisation, but only if you or your organisation:

- a) do not use the copy or reproduction for any commercial purpose; and
- b) retain this copyright notice and all disclaimer notices as part of that copy or reproduction.

Apart from rights as permitted by the Copyright Act 1968 (Cth) or allowed by this copyright notice, all other rights are reserved, including (but limited to) all commercial rights.

Requests and inquiries concerning reproduction and other rights to use are to be sent to the Communication Branch, Department of Health and Aged Care, GPO Box 9848, Canberra ACT 2601, or via email to [copyright@health.gov.au](mailto:copyright@health.gov.au)

Contents

Message from the Minister	4
The Client	5
Background	5
The Competition	6
The Entries	7
The Jury	8
Lived Experience Advisers	8
Jury Deliberations	8
Jury General Observations	9
Jury Prize Recommendations	10
Urban Metro Site	10
Regional Town Site	32
Competition Professional Adviser	46
Professional Endorsement	46
Attachment A	48



***Design has the potential to vastly improve the quality of life for older people living in aged care, and the working environments of the people who care for them ... through this design challenge, we are seeking innovative ideas and aged care accommodation solutions that will support older people to live meaningful lives in safe, high quality residential care when it is needed.***

Reimagining Where We Live Competition Brief  
Message from the Hon Anika Wells MP  
Minister for Aged Care  
Minister for Sport

## The Client

The Australian Government Department of Health and Aged Care is the Client for the Reimagining Where We Live open and anonymous design ideas competition.

The competition was endorsed by the Australian Institute of Architects and the Australian Institute of Landscape Architects and was widely promoted including through Austender.

The Competition Brief is at ([LINK HERE](#)).

## Background

The Royal Commission into Aged Care Quality and Safety recommended that the '*Australian Government should guide the design of the best and most appropriate residential aged care accommodation for older people by developing and publishing a comprehensive set of National Aged Care Design Principles and Guidelines on accessible and dementia-friendly design for residential aged care, which should be:*

- i. *capable of application to 'small household' models of accommodation as well as to enablement and respite accommodation settings, and*
- ii. *amended from time to time as necessary to reflect contemporary best practice'.<sup>1</sup>*

The Australian Government accepted this recommendation and in September 2023, released the draft *National Aged Care Design Principles and Guidelines (Principles and Guidelines)*.<sup>2</sup> The final *Principles and Guidelines* will commence from 1 July 2024.

<sup>1</sup> 2021 Royal Commission Final Report Recommendation 45.

<sup>2</sup> Prepared by a consortium comprising: the Centre for Health Service Development, Australia Health Services Research Institute, University of Wollongong; Dementia Training Australia; Constructive Dialogue Architects; Dementia Australia; and the Sustainable Buildings Research Centre, University of Wollongong.

## The Competition

On 17 October 2023 the *Reimagining Where We Live* competition was launched to help the Client test and refine the draft Principles and Guidelines for residential aged care.

*Reimagining Where We Live* offered a unique invitation for designers to shape the residential aged care accommodation of the future – an opportunity to contribute to the design of aged care homes in which older people would be enabled to live with dignity, respect and enjoyment.

The competition closed on 15 December 2023.

## Competition Objectives

The competition was focused on testing, refining, promoting and encouraging adoption of the Principles and Guidelines and validating their potential to demonstrate what well designed residential aged care accommodation looks and feels like.

Attention was drawn to the 4 Principles - in the Principles and Guidelines – *enable the person; cultivate a home; access the outdoors; and connect with community* – and the associated guidelines.

The competition also aimed to foster an awareness of the Principles and Guidelines among older people, their families and carers, providers of residential aged care and design professionals.

Entrants were encouraged to challenge preconceptions and showcase design as a change agent to influence positive and innovative lifestyle opportunities for older people.

## Competition Design Aspirations

The competition aspired to demonstrate design ideas for future residential aged care accommodation to provide homelike environments that promote quality of life, enjoyment, wellbeing and connection to community.

Aspirations for well-designed aged care to adopt the Principles and Guidelines were articulated including as '*a gamechanger shifting the design and care conversation from institutional to people-centric models and igniting change for the best*'.

The Competition Brief 'design aspirations' are at Attachment A.

## Hypothetical Sites

Entrants could choose to design residential aged care for either of two hypothetical sites and development scales:

- 1. Urban metro site for at least 100 residents ('medium' to 'large' development)**
- 2. Regional town site for 60 residents ('small' development).**

Each site included hypothetical descriptions of Country, climate, context and character, connections, demographics and the resident profile.

## The Entries

Fifty (50) compliant entries were received from all six Australian States. None were received from the Territories.

Twenty nine (29) entries proposed developments for the 'urban metro' site and twenty one (21) for the 'regional town' site.

The Client was pleased at the response to the competition and the evident commitment demonstrated by the design professions to the future of aged care accommodation in Australia.



## The Jury

The Jury for the competition comprised eight eminent members:

**PROFESSOR TOM CALMA AO**  
**2023 Senior Australian of the Year**  
**Jury Chair**

**KERSTIN THOMPSON AM LFRAIA** – Architect

**JOHN CHOI** – Architect

**ALLEN KONG LFRAIA** – Architect

**DR CATHERIN BULL FAILA LF (Hon) RAIA AM** –  
Landscape Architect

**DR STEPHEN JUDD AM** – Aged Care sector leader and  
dementia care expert

**TIM ROSS** – Design advocate and media  
personality

**SOPHIE DYRING** –  
Member of the Competition Organising Committee.

The Jury comprised members with extensive experience and expertise relevant to the competition and who represented a diversity of views, including First Nations and Culturally and Linguistically Diverse (CALD) perspectives. Juror biographies are available in the Competition Brief.

## Lived Experience Advisers

A focus group of six people with lived experience of dementia served as advisers to the Jury – three advisers for each of the hypothetical sites.

The advisers for the 'urban metro' site were:

**ANN PIETSCH**  
**STEVE GRADY**  
**MITHRANI MAHADEVA**

The advisers for the 'regional town' site were:

**GWENDA DARLING**  
**DENNIS FROST**  
**PAM EADE**

## Jury Deliberations

The Jury met in Canberra on 21 and 22 February 2024.

In considering and evaluating the entries the Jury had regard to the extent to which the design proposals:

- adopted the 4 principles (in the Principles and Guidelines) and demonstrated application of the guidelines (as relevant to the proposal)
- delivered on the design aspirations.<sup>3</sup>

The Jury shortlisted urban metro and regional town entries for consideration by the Lived Experience Advisers.

The Lived Experience Advisers met to review the Jury shortlists on 22 February – one group for the urban metro site and one for the regional town site. The Professional Adviser provided them with an objective verbal description of the shortlisted proposals.

Each Adviser group then met with the Jury to provide their verbal feedback – some comments being general and some specific. Positive discussion ensued between the Jury and Advisers.

The Jury is deeply grateful to the Advisers for their insight, open and informed comments and generosity in sharing their lived experience with Jury members. The Jury considers their engagement as having formed a vital part of the deliberative process and all Adviser comments were given careful consideration.

The Jury reflected on other design aspects of the shortlisted proposals in a holistic manner having regard to the evaluation criteria. The Jury engaged in spirited debate and exercised balanced judgement in making its deliberation.

The Jury reached consensus in making its recommendations to the Client on the winning design proposals and exercised its discretion to award commendations.

## Jury General Observations

The Jury was energised and impressed by the quality of the entries. The Jury thanks the Entrants and considers that many submissions surpassed the notion of 'design ideas' and took proposals to the level of 'concept design' with thoughtful and critical consideration of the Principles and Guidelines and of the competition design aspirations.

The Jury appreciates the extent to which residential clusters were explored in considerable detail demonstrating design decisions predicated 'first and foremost' on testing the small household model to 'cultivate a home' and to 'enable the person' – Principles 1 and 2 (in the Principles and Guidelines). The Jury considered that the competition outcomes support the viability of the small household model and the potential of the Principles and Guidelines to drive viable, innovative and quality design outcomes.

The Jury notes however, that the submitted proposals dealt with some more general aspects of the design with varying degrees of success. These included the local context; site layout and floor planning; the relationship of public, communal and private domains; and the location extent and quality of outdoor areas.

Unsurprisingly, given the wide scope of the competition, accommodating and reconciling all the Principles and Guidelines simultaneously also tested some of the more aspirational and innovative propositions.

Most specifically, Entrants were challenged by the need to balance lifestyle options, specific support needs (e.g. for people with a diagnosis of dementia) and potential resulting operational implications. Nevertheless, the Jury is of the opinion that in a 'real-world' co-design scenario, an outcome that positively balanced these could be achieved.

The Jury considered that with design development some proposals – in whole or part – could become typology models for future design consideration. Similarly, some images in the submissions were evocative of excellent design responses and warrant consideration for inclusion as precedent images in the Principles and Guidelines. A number of the thoughtful 'day in the life' of an older person narratives could also be used by the Client to personalise positive resident aged care experiences.<sup>4</sup>

The Jury observed that such opportunities are expected outcome benefits of design ideas competitions – 'thinking' as a valuable source of exploration to underpin the future of design direction and response to complex and significant design issues.

The Jury commends the Entrants for the way in which they rallied to this complex design challenge – one of significant public value. A positive future for residential aged care accommodation will require a commitment by service providers to innovative options and quality design outcomes. The Jury considers that the Principles and Guidelines can underpin such outcomes and that this competition is an indicator of designer imagination, willingness and capability to deliver outcomes of excellence.

The Jury also commends the Client for recognising the potential and value of the competition to foster design investigation and awareness of the Principles and Guidelines – in the interest of the best design outcomes for future aged care accommodation.

<sup>3</sup> In accordance with the evaluation criteria in the Competition Brief – Part 9.1.

<sup>4</sup> Subject to the agreement of the relevant Entrant.

## Jury Prize Recommendations

The Jury recommends the following projects for prizes or commendation.

### Urban Metro Site

**First Prize \$50,000**

Submission ID ZDPqVAxq

#### LMZA WITH SUPER NATURAL SCALES OF CARE

An exceptional proposition successfully designed as a dynamic connection between the individual and the community to create a *'productive relationship ... between the practice of care, and the environment in which it takes place ... a positive feedback loop ... fostered between the resident and the world around them.'*

Skillfully executed, the simple planning framework of three houses is carefully orientated on the site to optimise outlook and engagement within an outdoor setting that mimics *'front yard'* and *'back yard'*. The shared interface with the street is *'accessible to the wider community'* with the *'back yard'* particular

to the residents. The open spaces weave between the household buildings forming meaningful gardens and courtyards of diverse plantings, shapes and sizes. Strolling loops and destinations within the landscape support a community in which resident socialisation can be spontaneous or planned, individual engagement personalised and neighbourhood connection encouraged whilst remaining a matter of choice.

Simple elegant building envelopes of 3-4 levels create a human scale of quality and calm within the urban context. Spatial planning is underscored by small *'neighbourhood'* cohorts balancing private rooms with shared living spaces which are complemented by the staff and service arrangements – the whole presenting a familiar domestic environment. The timber palette, natural light and varied opportunities for views or access to the gardens offer a sense of enduring warmth that contributes greatly to the quality of the interior and exterior spaces.

The Jury was impressed by the extent to which this proposal successfully embraced and enabled personalisation and socialisation in the site organisation, conceived intelligent and workable small household planning, provided private rooms designed to be customised and each with its own outlook, and offered opportunities of choice for engagement and neighbourhood connection.

The Jury considers that the design presents a well-resolved model typology that is not overly *'bespoke'*

and is *'scalable'* and replicable – one that would be worthy of further development.

*Scales of Care* is a hopeful and caring reimagining of how we may live – it is an outstanding proposal that delivers on the Entrant's intention for an architecture that *'places people in relation to each other and the surrounding world in a way that encourages participation and sociability'*.







Where the front yard is shared with the street and threads the care home into the fabric of the neighbourhood community, the backyard is shared between the households and threads

together the fabric of the resident community. Deep root zones allow rewilding, reinstating lost native habitats and vegetation.



#### GROUND FLOOR PLAN 1:200

Western and Eastern buildings each have a typical floor plan across three stories. The Southern building hosts the staff home base and community program on the ground floor, with house-

holds on 1st and 2nd floors. The care home totals 100 residents and 8 guests across 8 clusters. Service areas, general back of house and parking is accommodated via a basement story.









Urban Metro Site

Second Prize \$20,000  
Submission ID mgpqJdZO

WALTER&WALTER  
CONNECTION, COMMUNITY AND  
MOVEMENT

An innovative proposition for residential aged care accommodation explored as a 'back flip' to 'invert the existing inward looking institutional model to an outward focused community one that is a great place to live and a great place to work'. The proposition also investigates people ageing in place aligned to the spatial program.

A cluster of 3 square blocks, each of 4 storeys, are arranged with a minimal site footprint affording a looser landscape setting with opportunity for intensive planting and recreational pathways. The result is a human-scale development of personal proportion.

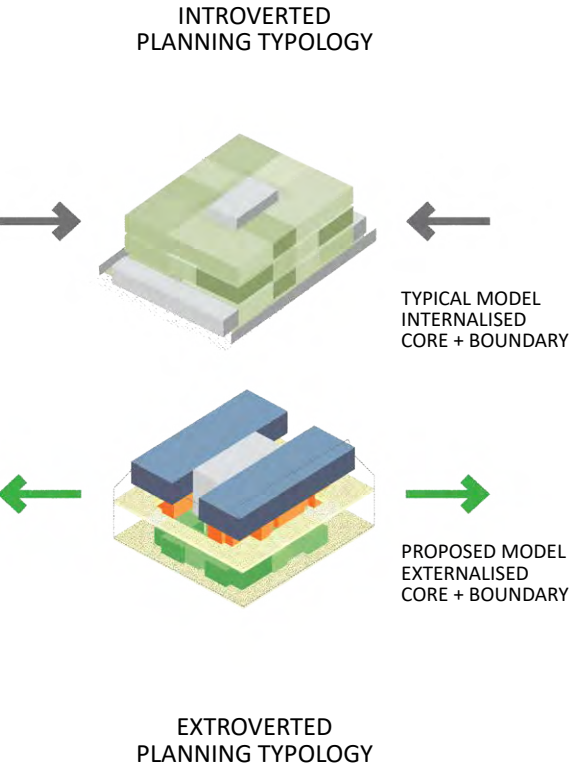
The radical spatial strategy takes the notion of a traditional internal corridor and turns it inside-out to create perimeter 'streets' of varied architectural expression – each with spaces to seat or socialise,

view, retreat or mingle. This vertical building arrangement aligns to levels of care and the perimeter spatial program.

The ground plane is highly interactive, permeable and outward focused with formal and informal social, recreation and living spaces between bedrooms and garden. Active frontages include an op shop, book store and café with intergenerational cross programing potential e.g. childcare and sports facilities designed to draw community into the site. On this level a person requiring low levels of care could choose to interact freely with the neighbourhood community. At level one the enclosed verandah 'loop street' provides spaces to interact for people needing medium levels of care. At level two balconies afford positive connection for people who may need to stay in their rooms for longer periods of time because they require high levels of care. Roof top spaces offer collective interaction for people to bring the resident community together – by choice.

The household model proposed allows 'residents to have their own space directly connected to shared spaces'.

The Jury was impressed with the way in which the proposal took a ubiquitous spatial arrangement and used the Principles and Guidelines as a mechanism to underpin this typology.







#### LEVELS OF CARE



Charlie- Low Level of Care

A retirement living concept with an open air veranda and active spaces like a cafe next to the lobby allowing residents neighborhood access to move freely into the community.



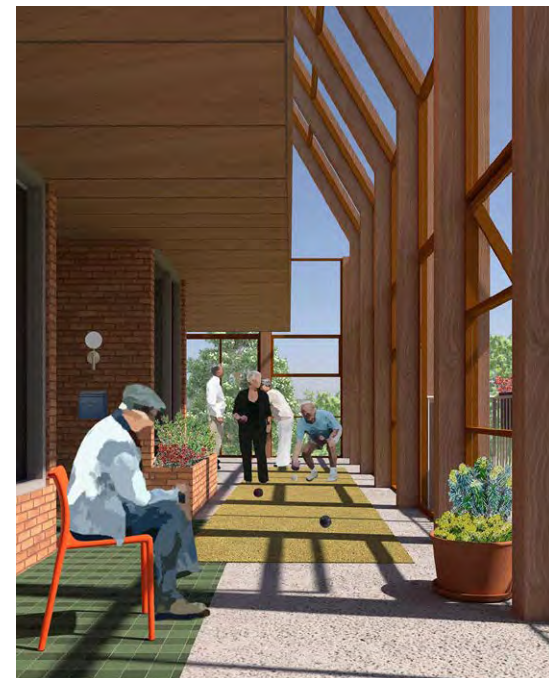
Anne - High Level of Care

A high level of care centrally serviced by carers for residents that predominately stay in their room yet have small balconies to connect with outside.

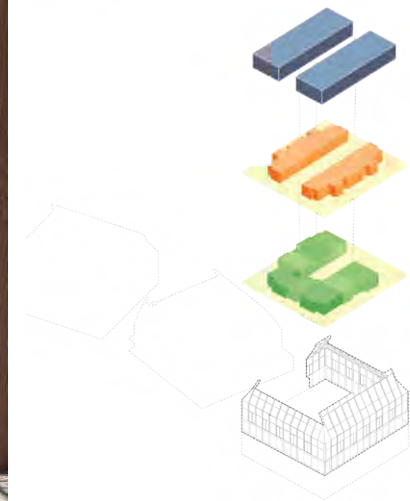


Communal Space

A space where all residents can meet indoors and outdoors for communal activities.



#### STREETS – INTERNAL STREETS WITH COMMON AREAS



Bianca - Medium Level of Care

A household and a community with spaces to interact along an enclosed loop street with points of activation along its length.





Urban Metro Site

Highly Commended  
Submission ID mnYldkMa

CULTIVAR + WILD STUDIO  
REFLECTION HOME

This proposition explores a planning strategy to shift thinking from a large communal landscape setting model to a 'small household + small garden' response.

Designed to be adaptable and flexible to context and demographic, the proposal sensitively integrates and reflects the hypothetical local neighbourhood and demographic – including a street level chapel, church and community attractors such as a bakery, barber and creative workshop spaces.

Resort living informs the proposal including the strong relationship between interior and garden. The spatial program is predicated on small households with carefully delineated shared living space 'punctuated' by intimate discrete 'owned' household gardens - of sensory or memory persuasion - and clusters of bedrooms 'interspersed with gardens' of a more private character.

The Jury noted the value of the excellent household visitor amenities for family stays and the delightful interior detailing with human scale and 'feeling' evident in the imagery.

The Jury considers that the typology could demonstrably work with positive effect in an even higher 'rise' configuration or in a variety of urban contexts and scenarios.

The Jury commends the Entrant design intent of 'a home for the now but also a reflection of homes loved in our past, or homes we have dreamt of for our future'.



LANTERN CHAPEL AND ENTRY GARDEN AT STREET LEVEL





REFLECTION HOME PLAN



Herb Garden

Botanical Name	Common Name
<i>Citrus limon</i> 'Eureka'	Eureka Lemon
<i>Olea europaea</i>	Olive Tree
<i>Rosa roxburghii</i>	Black Magic Rose
<i>Solanum lycopersicum</i> var. <i>escaflavum</i>	Cherry Tomato
<i>Salvia officinalis</i>	Sage
<i>Thymus vulgaris</i>	Thyme
<i>Rosmarinus officinalis</i>	Rosemary
<i>Mentha</i>	Mint



Sensory Garden + Reflex Path

Botanical Name	Common Name
<i>Corchorus olivaceus</i>	Lemon-scented gum
<i>Callistemon viminalis</i>	Bottlebrush
<i>Citrus limon</i>	Lemon Tree
<i>Alcea rosea</i>	Spirea
<i>Asplenium nidus</i>	Spider Plant
<i>Chamaecrista nictitans</i>	Parrot Pea
<i>Diarrhea repens</i>	Flax Lily
<i>Hymenocallis littoralis</i>	Star of Sea
<i>Asplenium nidus</i>	Spider Plant
<i>Encyrtus caryocarpae</i>	Small Green Fly
<i>Thymus vulgaris</i>	Common Thyme
<i>Stachys byzantina</i>	Lamb's Ears
<i>Lambertia discolor</i>	Chamelaucium
<i>Catalpa bignonioides</i>	Cashew Tree
<i>Rosmarinus officinalis</i>	Rosemary



Memory Garden

Botanical Name	Common Name
<i>Backhousia citriodora</i>	Lemon Myrtle
<i>Citrus australasica</i>	Australian Finger Lime
<i>Magnolia grandiflora</i>	Magnolia
<i>Olea europaea</i>	Olive Tree
<i>Gardenia augusta</i> 'Majestic'	Gardenia Majestic
<i>Leucodendron daniellii</i>	French Lavender
<i>Mentha</i>	Mint
<i>Salvia officinalis</i>	Sage
<i>Gargansea glauca</i>	Pig Face
<i>Muhlenbergia chamissonis</i>	German Chamisa
<i>Stachys byzantina</i>	Lamb's Ears



GARDEN SPINE LINKS THROUGH TO CAFE



JANE + IVAN

BILL

BILL'S DAUGHTER

JUNHAO + MAYA



Urban Metro Site

Highly Commended  
Submission ID znyOQryd

JACQUELINE BARTHOLOMEUSZ  
DAVID SUTHERLAND,  
LORRAINE CALDER, OCULUS  
CANOPY

A sophisticated building proposition that merges family clusters and personal resident room configurations within an organic circulation and socialisation spatial weave bounded by landscape. Cascading gardens with innovative and functional *'tree columns'* and a *'main street activity centre'* holds this two-neighbourhood building composition together.

A creative jigsaw of household, private and socialisation space presents as an exciting and varied yet fundamentally legible and enabling environment.

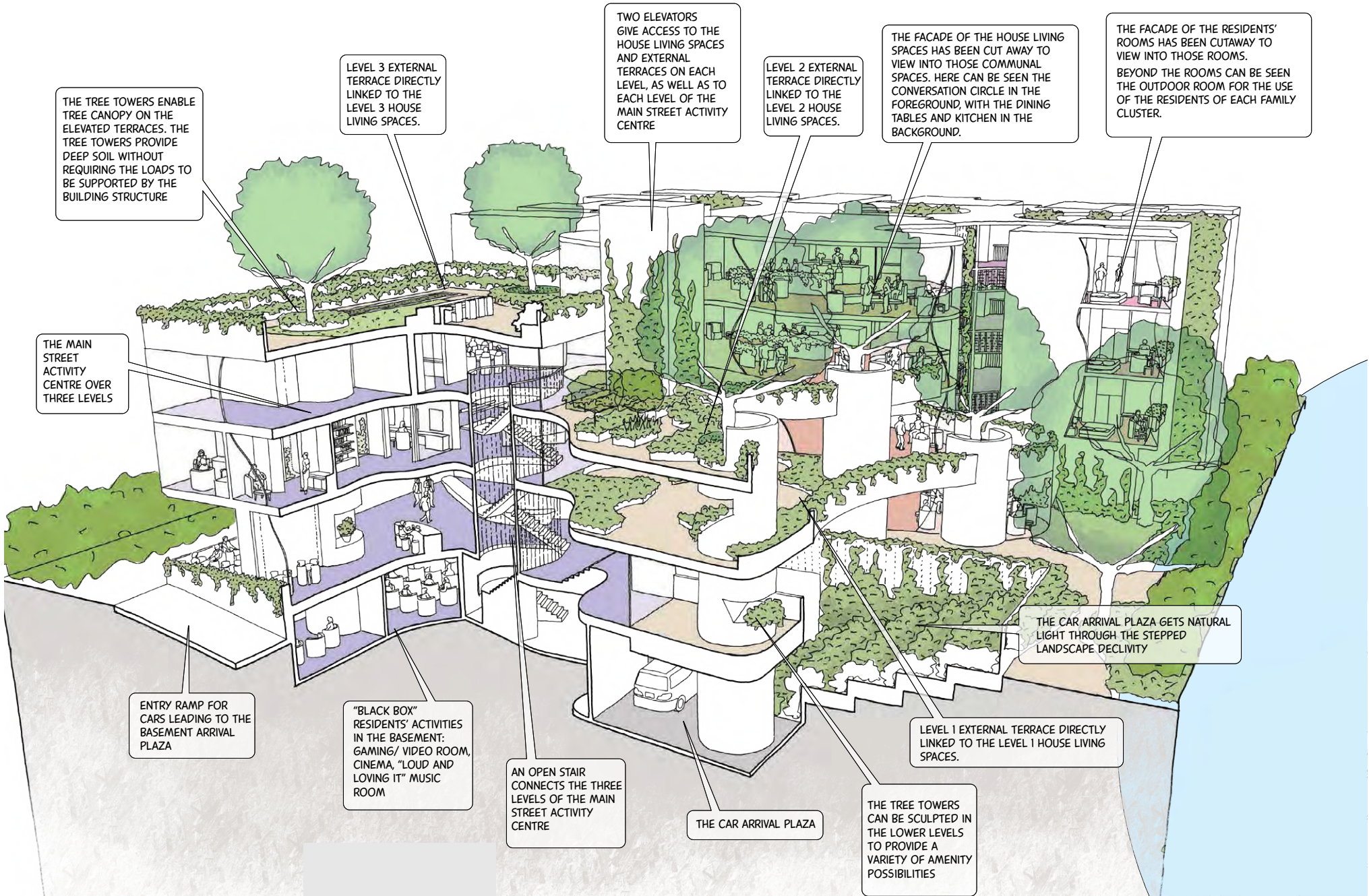
The Jury was intrigued by the intelligent hierarchy of internal resident *'neighbourhoods'* expressed as small clusters of bedroom suites with discrete get-together

spaces, integrated by larger shared living spaces to *'host a variety of ordinary home activities'* and sun and light filled outdoor terraces *'to meet residents of adjoining households'*.

The Jury noted that the proposal presented as an appropriately scaled development that invited incidental resident and local socialisation. At ground plane the *'main street'* configuration and community integration and controlled connectivity to upper residential levels is well handled.

The Jury commended the significant areas of landscape and vegetation – at all levels and in multiple locations – as being of real value to residents and to staff providing a sensory natural environment of pleasure and beauty within the urban context.

The Jury also commended the detailed spatial planning evident in the proposal which interrogated the Principles and Guidelines with creative flourish and innovative translation.



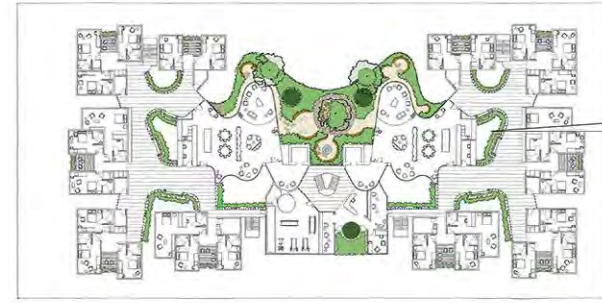


### Level 3



INTEGRATED PLANTERS PROVIDING LANDSCAPE CONNECTION BETWEEN FLOORS.

### Level 2



INTEGRATED PLANTERS PROVIDING LANDSCAPE CONNECTION BETWEEN FLOORS.

### Level 1

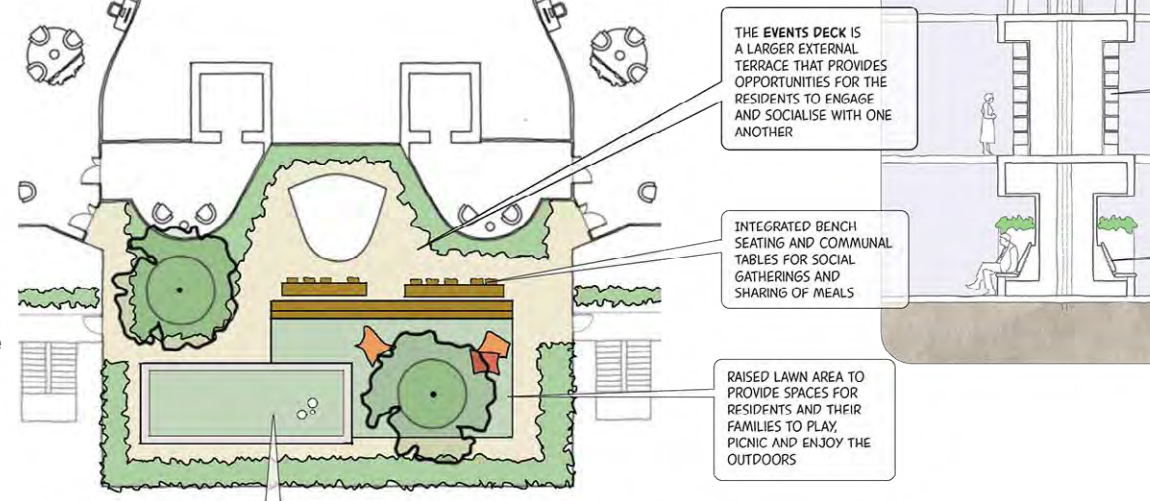


### Basement

CASCADING TERRACED LANDSCAPE PROVIDING VISUAL CONNECTION FROM THE BASEMENT TO THE GROUND FLOOR

LANDSCAPE POCKETS LOCATED BELOW COURTYARDS ABOVE FOR SUNLIGHT ACCESS AND PASSIVE IRRIGATION

### Level 3 Central Garden Terrace



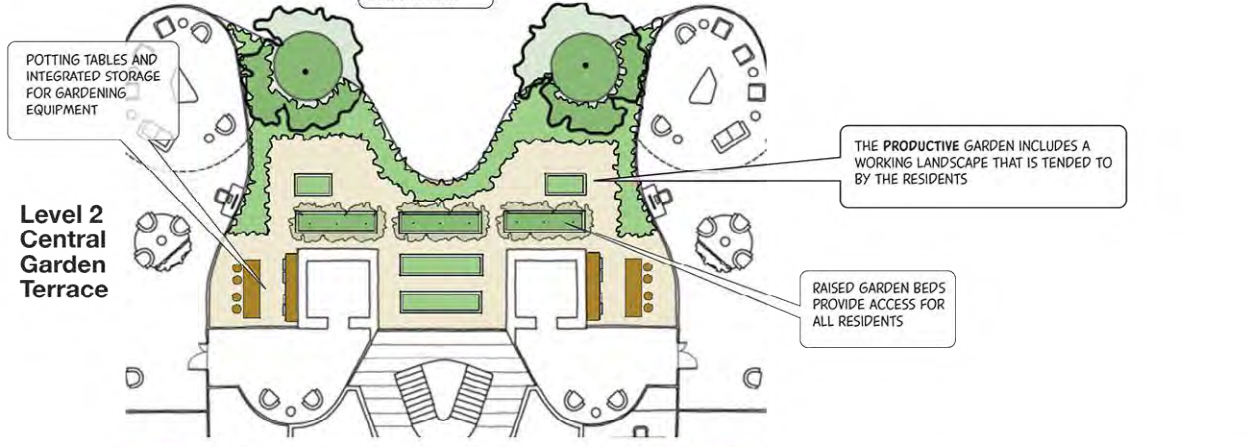
THE EVENTS DECK IS A LARGER EXTERNAL TERRACE THAT PROVIDES OPPORTUNITIES FOR THE RESIDENTS TO ENGAGE AND SOCIALISE WITH ONE ANOTHER

INTEGRATED BENCH SEATING AND COMMUNAL TABLES FOR SOCIAL GATHERINGS AND SHARING OF MEALS

RAISED LAWN AREA TO PROVIDE SPACES FOR RESIDENTS AND THEIR FAMILIES TO PLAY, PICNIC AND ENJOY THE OUTDOORS

BOCCIE COURT

### Level 2 Central Garden Terrace



POTTING TABLES AND INTEGRATED STORAGE FOR GARDENING EQUIPMENT

THE PRODUCTIVE GARDEN INCLUDES A WORKING LANDSCAPE THAT IS TENDED TO BY THE RESIDENTS

RAISED GARDEN BEDS PROVIDE ACCESS FOR ALL RESIDENTS



RECYCLED LOG STEPPERS WITHIN THE LANDSCAPE TO PROVIDE INFORMAL PLAY OPPORTUNITIES FOR FAMILIES

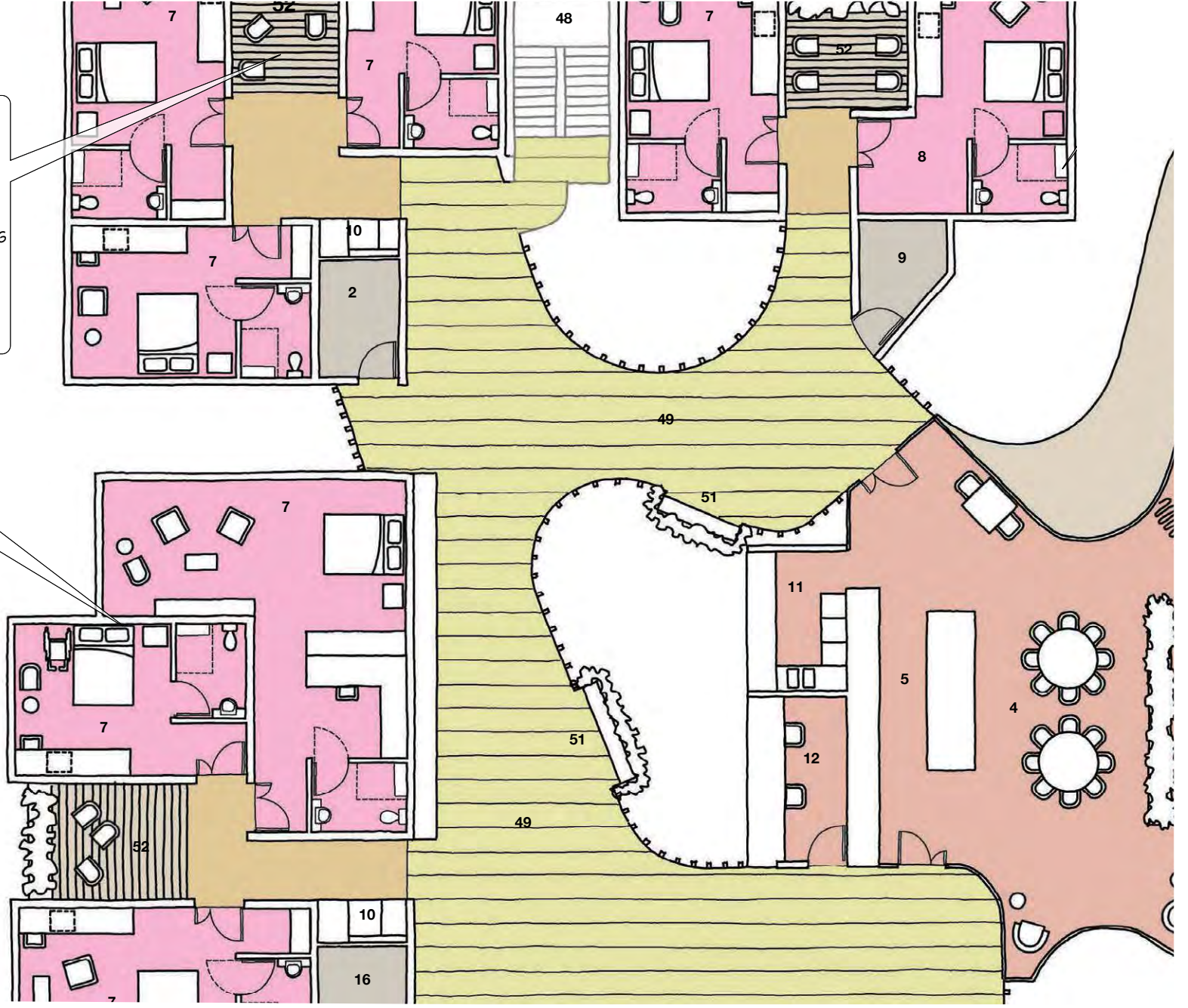
THE SENSORY GARDEN PROVIDES OPPORTUNITIES FOR RESIDENTS TO WANDER AND EXPERIENCE A RANGE OF SENSORY DELIGHTS WITHIN THE LANDSCAPE INCLUDING VARYING PLANT COLOUR, FORM AND TEXTURES, SOUNDS, INTIMACY AND PLAYFULNESS

INTIMATE SPACES WITHIN THE LANDSCAPE FOR RESIDENTS TO SIT AND INHABIT NATURE

LARGER GATHERING SPACES TO ENCOURAGE SOCIAL INTERACTIONS AND CONNECTION

ACCESS TO INTIMATELY SIZED OUTDOOR ROOMS WITH CASUAL SEATING, SHARED BETWEEN 2-3 ROOMS IN A HOUSEHOLD, AKIN TO HAVING A YARN ON THE FRONT VERANDAH. THIS OFFERING IS ESPECIALLY IMPORTANT FOR RESIDENTS WITH LIMITED MOBILITY

THE UNIQUE SMALL CLUSTERS ENABLE EACH BEDROOM TO BE DEVELOPED OR PERSONALISED, RESULTING IN A RANGE OF DIFFERENT LAYOUTS AND CONFIGURATIONS TO RESPOND TO CONTEXT AND CUSTOMER PREFERENCES.





Urban Metro Site

Commended  
Submission ID ramDdZgL

T&Z ARCHITECTS + ASPECT STUDIOS  
AN ORDINARY LIFE

This proposition explored the concept of aged care as 'a continuum that binds generations together' including as 'a manifestation of gratitude that echoes through generations, reminding us of the profound impact that collective care can have on the fabric of the day'.

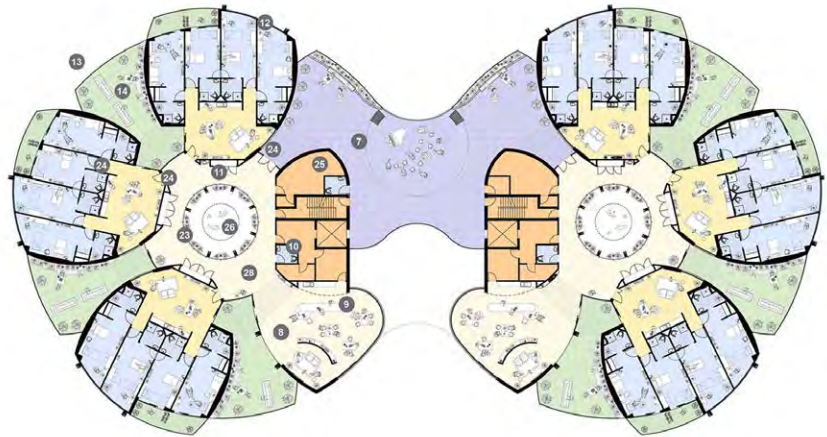
The neighbourhood floor plan investigates a non-linear alternative to more traditional linear circulations and socialisation models. The active ground floor is 'envisaged as a vibrant intergenerational public square' and is well executed with childcare, a 'village lobby' and convincing landscape garden setting. Curated spaces creatively transition from internal shared to private space within household hubs described as 'sanctuaries of comfort and familiarity'.

An aviary void is presented as a beautiful experience of life that connects all floor levels. The Jury considered the aviary as being conceptual rather than absolute in design execution – a wonderful notion for sensory engagement with wildlife.

This is a nested neighbourhood scheme based on several small clusters of rooms with shared living spaces around a central circulation space. The Jury commended the spatial planning as inviting a design conversation about choice of foci – outward between the household clusters to the world beyond as well as inward to the aviary.



STREET VIEW



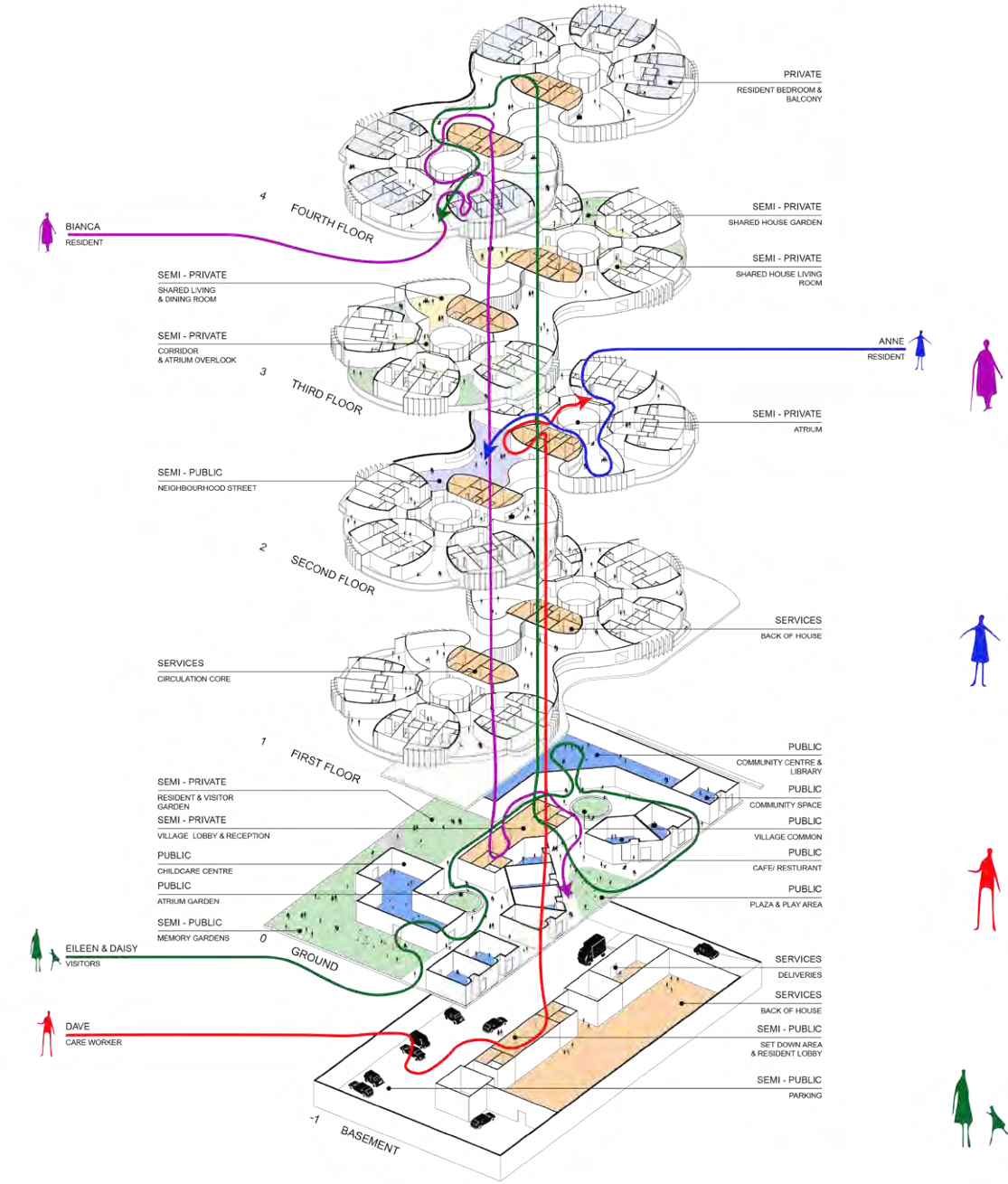
NEIGHBOURHOOD FLOOR PLAN





- A RAMP TO DROP OFF & BOH
- B COMMUNITY BUSINESS INCUBATOR
- C MAKER SPACES
- D COMMUNITY CENTRE & LIBRARY
- E VILLAGE COMMON
- F CAFE / RESTAURANT
- G CARE VILLAGE FOYER & RECEPTION
- H LIGHTWELL TO BASEMENT DROP-OFF
- I VERTICAL CIRCULATION
- J ALLIED HEALTH
- K BEAUTY SALON & THERAPY
- L PUBLIC PLAZA WITH NATURE PLAY
- M ALFRESCO SEATING
- N CONVENIENCE & RETAIL
- O CHILD CARE
- P SENSORY & MEMORY SUPPORT GARDENS
- Q COMMUNITY GARDENS

SITE PLAN



EXPLODED AXONOMETRIC  
SPATIAL HIERARCHY & VERTICAL  
CIRCULATION



Regional Town Site

First Prize \$50,000

Submission ID yyomjmeJ

MONASH URBAN LAB WITH NMBW  
ARCHITECTURE STUDIO,  
BOARDGROVE ARCHITECTS, BLOXAS  
AND GLAS LANDSCAPE ARCHITECTS  
MANU PLACE

*'Small households are cultivated around a central cloistered courtyard with natural light, air and greenery. Resident units, with dual access to the cloister and private verandahs, provide a private and dignified home within a household to which they belong.'*

This is an outstanding proposition which critically addressed the Principles and Guidelines with a strong and appropriately scaled low-rise spatial program sensitively and intelligently embedded within the site context and neighbourhood.

A self-sufficient small household 'cloister' typology is proposed in a three-sided built form model with the fourth side orientated to cross-site circulation paths and lanes. A slight lateral shift in the site planning

pattern between the built forms and central spine generates a valuable and stimulating pedestrian environment. Together with the north south vehicular access points positive orientation is achieved with legible access and navigation for residents and visitors alike.

Subtle engagement or retreat for residents is manifest in the model with cloister gardens and private verandahs complementing and contrasting with communal landscaped courtyards – *'intimate to large, quiet to active'*. Verandahs are utilised to good effect opening off the attractive bedrooms with overlooking opportunities of choice.

Each household cloister offers a range of protected settings neatly integrated with staff support and indoor and outdoor social spaces – skillfully achieving security but also openness for members of the household cohort.

An integrated 'neighbourhood' is achieved with the cloisters and communal courtyards each considered by the Jury as having thoughtful discrete identities – the music or play courtyards, the forest or billabong cloisters. Street community interfaces include a kindergarten and working kitchen garden complete with greenhouse - *'Gokoma Hub'* – productive gardening in which residents can engage as and when they want to.

The Jury noted the simple, modest and economical architectural language as sympathetic to the rural setting. The familiar roof forms, verandahs and loosely sited building envelopes sit well with the purposeful and varied outdoor areas and gardens. The whole contributes to a recognisable Australian rural aesthetic.

This proposal offers residents a direct connection with the outdoors encouraging rural engagement and the opportunity for residents to *'look at the sky'*, engage by choice in meaningful community activities and feel and enjoy the stillness and natural qualities of a rural/ regional living environment.

*'The outdoor environment supports the rhythms and patterns of daily life with no separation between front and back of house activities. Overlapping functions bring together residents, workers and carers in planned and informal ways.'*

The Jury considered the proposal to be a well-resolved model typology worthy of being considered for further development.

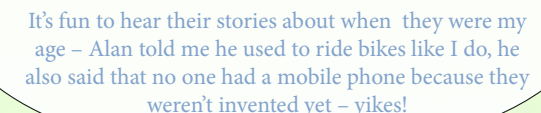
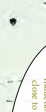


DANTE: My mates and I getting ice cream from the servery after school. It's the best ice cream around and sometimes there's even a queue down the street. We sit in on the bench to eat them.





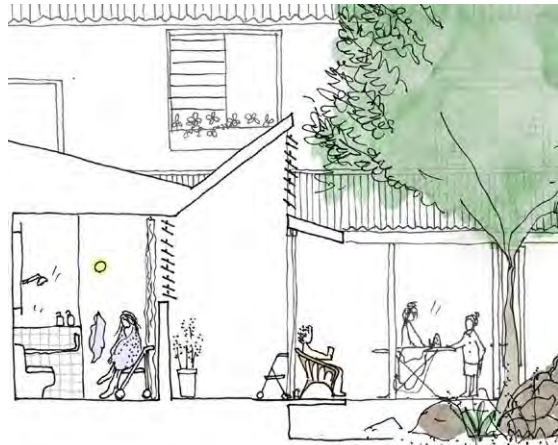
- NELLISA:** Mum is getting more forgetful these days, and she can't remember Seth's name when we run into him pushing the laundry trolley down the hallway. He is changing the bedding today. We have a chair and Mum tells him she loves the feel of fresh sheets.



I am feeling sad today as Lillie passed away a couple of days ago. She was a Yorta Yorta Elder and this morning I arranged for her people to hold a mourning ceremony and procession along the laneway. It was really moving.



PRINCIPLES



BATHROOMS ARE DIGNIFIED LIVING SPACES, ENABLING EASE OF CARE AND AMPLE SPACE FOR EQUIPMENT.



BEDS FACE A BAY WINDOW, ACCESSING THE WORLD OUTSIDE FROM WITHIN, AND A GREEN VERANDAH.



A COVERED CLOISTER WORKS AS BOTH A THOROUGHFARE AND A PLACE TO LINGER, SIT ALONE OR SOCIALISE.



GREEN COURTYARDS PROVIDE A LIVELY AND SAFE PLACE FOR SOCIALISING WITH THE WIDER COMMUNITY.



PUBLIC-FACING FUNCTIONS OCCUPY STREET AND SCHOOL EDGES, CONNECTING THE WORLD OF MANU PLACE TO THE TOWN.





Regional Town Site

Second Prize \$20,000

Submission ID jveenBJq

OTHER ARCHITECTS, OPENWORK,  
ANDY FERGUS AND ALICIA POZNIAK  
ALL TOGETHER NOW

*'A town, in miniature, with a variety of uses arrayed along a vibrant internal street. While most of the proposed development consists of modular, single-storey courtyard buildings, a two-storey community, office and staff accommodation building hold the corner.'*

The Jury was impressed by this conceptually strong proposition – a clear and simple village site planning construct of seven small households and a community childcare cooperative *'placing children at the centre of the plan'*. Proposed as an inter-generational care home the environment is intended to integrate and stimulate town social connections.

Predicated in care for Country the *'village'* embraces First Nations cultural principles as *'an excellent basis for communal health, wellbeing and safety'*

including by restoring a remnant watercourse, creating a connection to sky and *'reawakening the site's traditional use as a meeting place'*.

Small household *'cottages'* of 8-12 residents are organised around attractive shared living spaces and communal courtyards. The architectural response is generally low-rise single-storey and *'house-like'* reflecting a regional character with a contemporary take on form and materiality. Variation in building colour and roofscape support distinctive identities within a well scaled landscape. Interior spaces continue this theme and utilise volume to effect including for identity and spatial legibility.

*'Room like'* double-height corridors do much more than connect spaces. Rather they support generous and varied destinations presenting as well-lit and ventilated common spaces that encourage spontaneous or programmed socialisation.

The sensory and biodiverse semi-private household courtyard gardens including vegetable and herb gardens, attract an ever-changing array of nature whilst the central village communal garden provides a wider and more interactive engagement.

*'This intergenerational care home provides an environment for enhanced support, joyful activities and social connection, contributing to the vitality of its town'*.



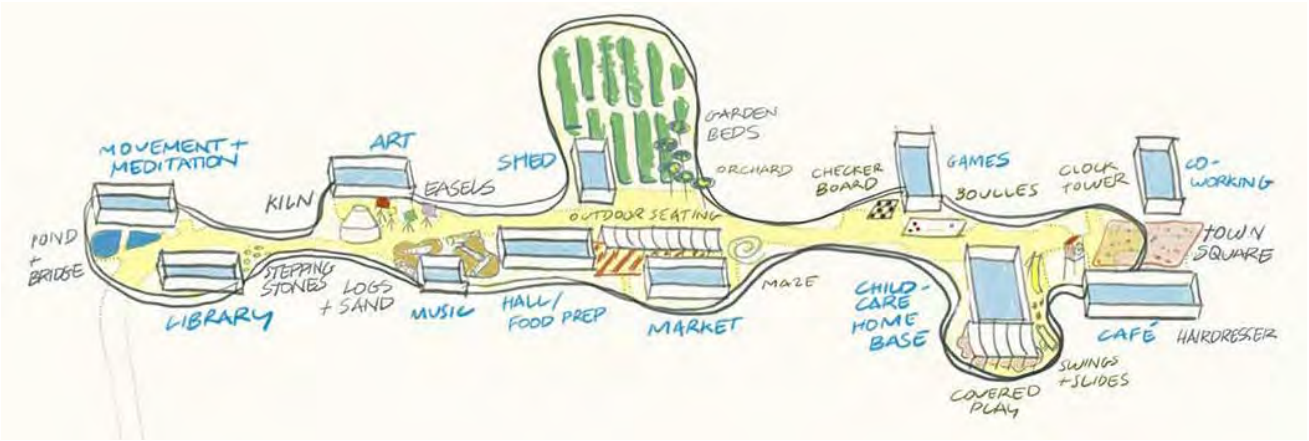




A TOWN IN MINIATURE



SITE DEVELOPMENT PLAN





## Regional Town Site

### Highly Commended

Submission ID mneRPbvE

MARK BOFFA, GURUGE RUWANI  
DHARMASIRI, PULASTHI WIJEKON,  
JANA OSVALD AND JULIE OCKERBY  
**THE CONNECTED GARDEN**

A highly resolved site plan of five small household cottages clustered along a thoroughfare that weaves diagonally and gently through the development connecting the resident community with the neighbourhood. The composition is recognisable as a shared country '*main street*' offset by a network of pedestrian connections particular to the residents and encouraging strolling and engagement.

Each household cottage has a dedicated garden for residents. Communal wayside gardens – of rain and permaculture – and well-conceived destinations along the thoroughfare include an intergenerational exercise area and an orchard. The setting is landmarked with a men's shed and BBQ signaling the laneway / park corner and an active community '*town centre*'

at street entry which hugs a central park meeting place. That hub includes staff and overnight visitor accommodation, a rentable multipurpose room, café and playground.

Household interiors are domestic in character with socialisation spaces of varied scales distributed between attractive bedrooms each with good outdoor access. The main communal living spaces establish a legible core with generous indoor-outdoor opportunities and outlooks.

The Jury commends the way in which this proposal reflects the character and scale '*imagined*' for many Australian country towns – the discrete cottage gardens, front door to street arrangements, general built form massing, warm masonry facades and pitched metal roofs.

The Jury considered that this development was a robust approach that could be adapted to many site conditions.







# HOME PLANNING DIAGRAM

## LEGEND HOUSEHOLD

- 1 HOME ENTRY
- 2 LOGGIA WITH ENTRY DOOR INVISIBLE TO RESIDENTS
- 3 FLEXIBLE MEETING ROOM
- 4 STAFF AMENITY & ADMIN
- 5 DOMESTIC KITCHEN
- 6 DISCREET STORAGE IN DOMESTIC FURNITURE
- 7 BUREAU FOR STAFF AS PART OF DOMESTIC FURNITURE
- 8 DISCREET STORAGE IN WALLS
- 9 MAIN LIVING AND DINING SPACES WITH DOMESTIC FURNITURE, CONVERSATIONAL SETTINGS, SOME FURNITURE AND DECORATIONS ARE FAMILIAR AND SOURCED FROM RESIDENT'S HOMES
- 10 SECONDARY LIVING DINING OPTIONS FOR DIFFERENT MOODS
- 11 PRIVATE ROOMS
- 12 DOMESTIC LAUNDRY FOR RESIDENT USE
- 13 DRYING YARD
- 14 DISCREET/SERVICE ENTRY AND ACCESS TO DRYING YARD
- 15 UTILITY AREAS FOR STAFF USE
- 16 SHARED AND PRIVATE PATIO ACCESSED FROM ONE'S ROOM
- 17 NORTH-FACING COMMON GARDEN
- 18 A VARIETY OF SHADED AREAS, ACTIVITIES, AND SENSORY EXPERIENCES IN LOOPED PATH. SAFE CONTAINED ENVIRONMENT FOR RESIDENTS AND STAFF VISUAL ACCESS.
- 19 PERMA CULTURED GARDENS TENDED BY VOLUNTEERS INCREASE BIODIVERSITY, NATURAL WATER AND LAND MANAGEMENT AND FOOD FOR MANY
- 20 COMPOSTING CENTRE
- 21 SKYLIGHT





Professor Tom Calma AO  
Jury Chair on behalf of the Jury



**Competition Professional  
Adviser**

Annabelle Pegrum AM LFRAIA was the Competition Professional Adviser.

**Professional Endorsement**

The Competition was endorsed by the Australian Institute of Architects and the Australian Institute of Landscape Architects.



## Design aspirations

Residential aged care accommodation of the future is expected to provide homelike environments that promote quality of life, enjoyment, wellbeing and connection to community.

Entrant proposals should demonstrate the extent to which adoption of the *Principles and Guidelines* can deliver on the following design aspirations.

### Well-designed aged care accommodation will offer:

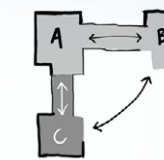
- ♦ *a place where you can live your best life within and as part of a community and neighbourhood*
- ♦ *a welcoming and safe 'family' home environment*
- ♦ *a supportive setting for high quality care promoting health and wellbeing*
- ♦ *respect and dignity and embrace diverse cultures and life experiences*
- ♦ *innovative aged care accommodation for the future.*

### Aspirations for the *Principles and Guidelines* are that adoption will:

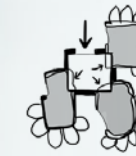
- ♦ enrich the quality of life and wellbeing of older people by better meeting their needs and recognising their aspirations
- ♦ provide homes that empower and support older people
- ♦ expand and diversify accommodation and lifestyle choices for older people
- ♦ demonstrate the value of small, homelike clusters of people living together
- ♦ encourage new ways for managers and staff to engage, thrive, work and adapt to change
- ♦ engender a shared design vision between residents, families, carers and staff
- ♦ be a gamechanger, shifting the design and care conversation from institutional to people-centric models and igniting change for the best.

*Enrich the quality of life and wellbeing of older people by better meeting their needs and recognising their aspirations.*

### *Principles and Guidelines*



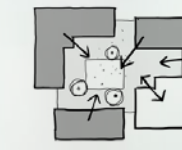
**1.7**  
Simple  
Circulation



**2.1**  
Small  
Households



**3.4**  
Garden  
Destinations



**4.2**  
Community  
Hub





REIMAGINING  
WHERE WE LIVE



Australian Government

Department of Health and Aged Care