

Digital transformation

Sector Partners

Co-design meeting (17)

Digital Transformation and Delivery Division
Corporate Group | Department of Health and Aged Care



Australian Government
Department of Health and Aged Care



www.health.gov.au

Meeting #17

24/03/2023



WELCOME

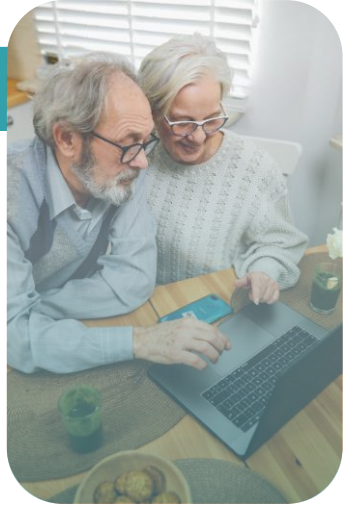
Fay Flevaras

Digital Transformation and Delivery Division
Corporate Group | Department of Health and Aged Care

Digital transformation for the aged care sector

Agenda

Sector Partners #17



**Welcome
& agenda**

Fay Flevaras

State of play

Fay Flevaras

**B2G
Authentication
discovery**

Greg Heath

**24/7 Nursing
update**

James Lewis
& Lavanya
Madasu

**Sector Partner
Pulse survey**

Fay Flevaras

Close

Fay Flevaras



Australian Government

Department of Health and Aged Care

State of play

Digital Transformation Sector Partners

Fay Flevaras

Digital Transformation and Delivery Division
Corporate Group | Department of Health and Aged Care

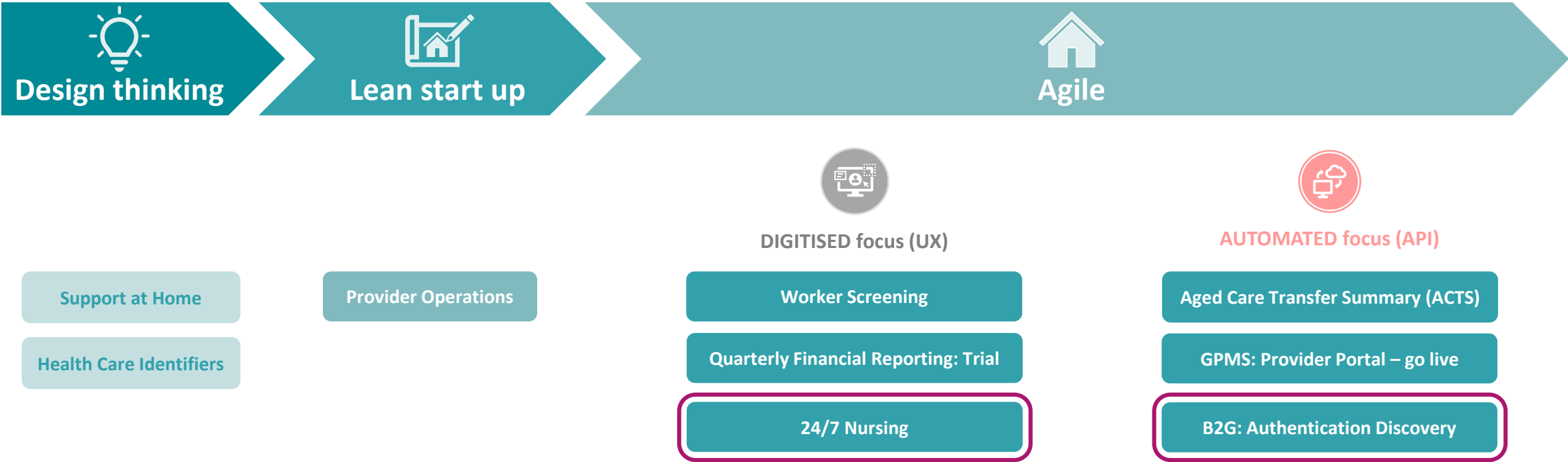


Australian Government

Department of Health and Aged Care

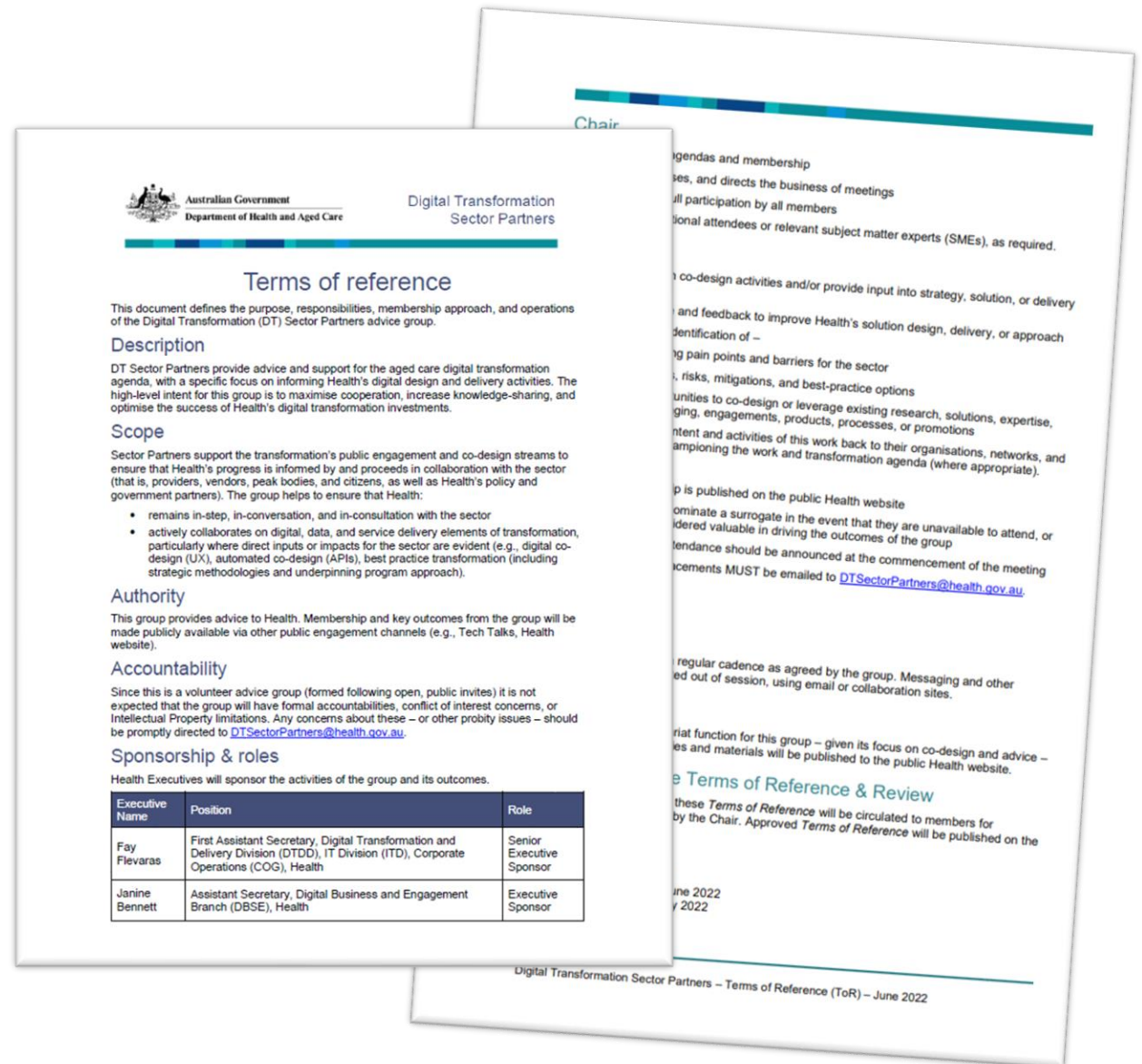
Open co-design activities by phase

Open 



Terms of Reference

- Originally endorsed last year
- Changes to factor in –
 - new year
 - new members
 - new dept. name
- NEW: *Practice Co-design – ToR review*



Pulse Survey

- Take the survey
- Tell us:
 - What's working?
 - What we can improve on?
- NEW: *Practice Co-design – SP Pulse Survey*

Join at
slido.com
#SPPulse



LAUNCH – Agile



B2G Authentication Discovery

Discovery Activity Introduction

Greg Heath

Director | Aged Care Services and Sustainability Branch



Australian Government
Department of Health and Aged Care

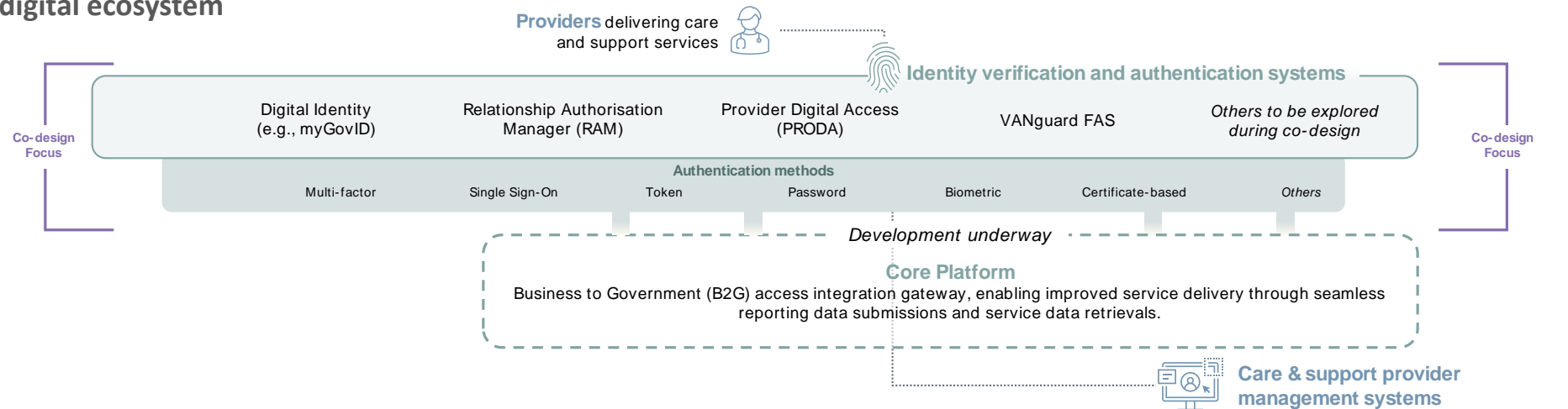
B2G: Introduction

Objective



We are commencing a **co-design activity** to explore and identify **options** and a **recommended solution** for Providers of Care and Support services to authenticate into the Core Platform and consume B2G API's

The Provider digital ecosystem



The ask

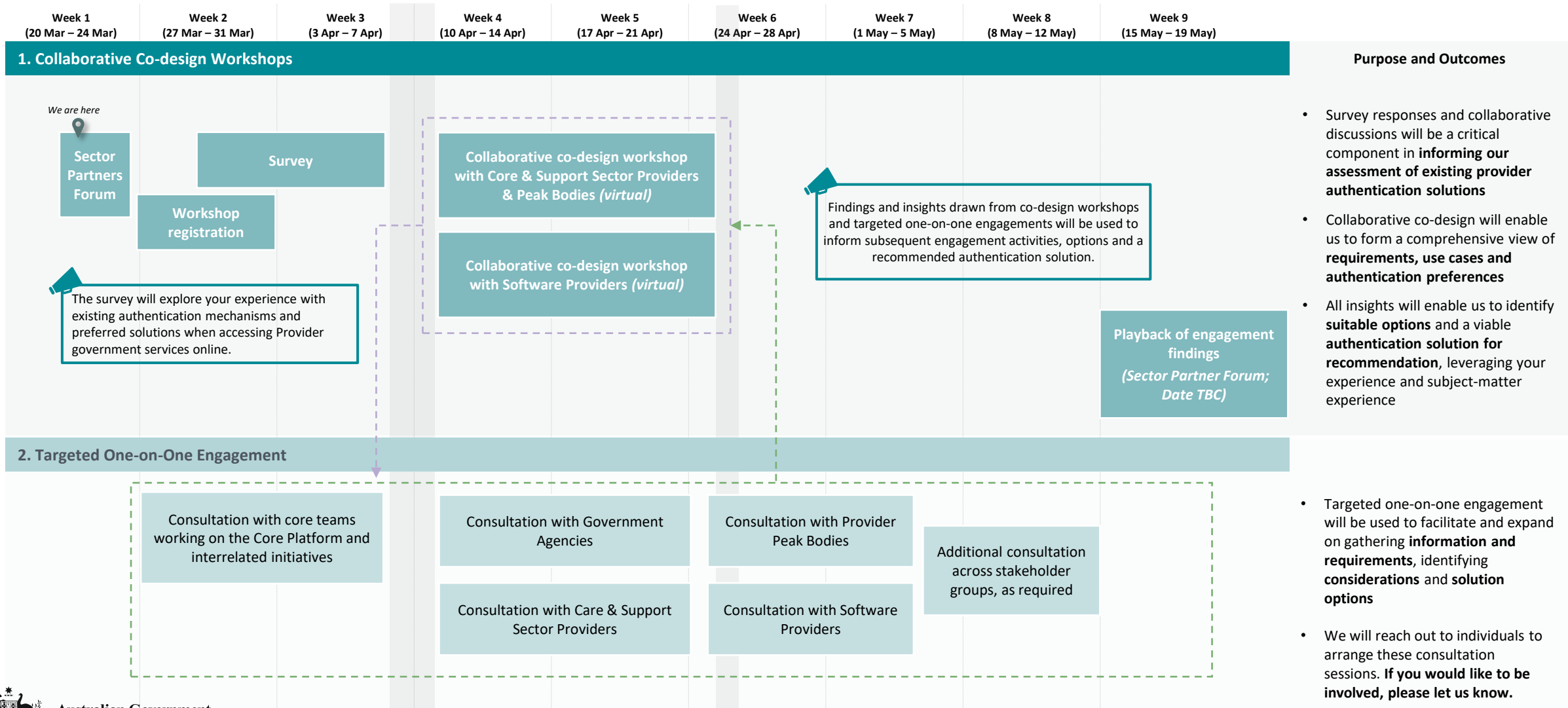
We want to hear from you

- We are calling for all Sector Partners (Care and Support Sector Providers, Peak Bodies, Software Providers) to participate in a short **survey** and/or **2-hour co-design session**
- Your input will be fundamental to forming a robust and comprehensive view of existing authentication mechanisms, what works well (and what doesn't), requirements, use cases, considerations, and authentication solution preferences
- Your participation will be invaluable in shaping options and determining the most viable solution for recommendation.

- Government Provider Management System (GPMS)
- Aged Care Provider Portal
- Data Exchange Portal (DEX)
- Veterans' Home Care Provider Portal
- myPlace Provider Portal (NDIS) Services
- *Others to be explored during co-design*



Engagement Activities



Next steps & how to get involved



1. Co-design Workshops

- Complete the workshop participant form to secure your participation in our co-design workshops. Please respond by Friday 31 March
- Workshop invites and supporting detail will be distributed by Thursday 6 April
- If you would like to arrange a separate one-on-one meeting, please contact Jessica Holmick or Rishu Kang at dtsectorpartners@health.gov.au



2. Survey

- A short survey will be distributed by Friday 31 March
- Respond to the B2G Authentication survey by Thursday 6 April



3. Get in touch

- For additional information or questions regarding this co-design activity, please reach out to dtsectorpartners@health.gov.au





24/7 Nursing update

Digital Transformation for the Aged Care sector

Jim Lewis

Evan Grimmett

Lavanya Madasu

Corporate Group | Services and Sustainability branch



The Problem

Nurses 24/7 Supplement

The Government is seeking to ensure that Registered Nurses are available on a 24/7 basis within residential aged care services to enable a higher standard of care to be delivered in these settings.

To enable services to establish a 24/7 registered nursing presence it is proposed to introduce a new 24/7 Registered Nursing supplement which will be calculated on a daily basis and paid as part of the residential aged care monthly claiming cycle by Services Australia



The Solution

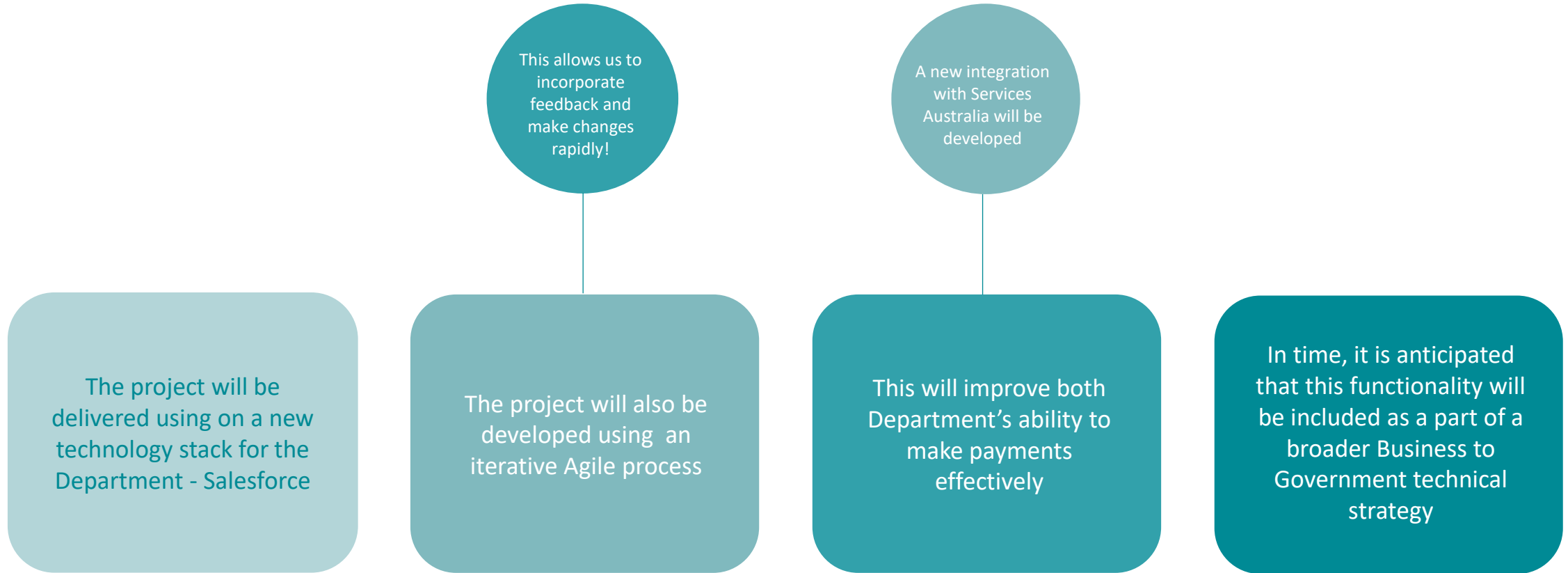
Nurses 24/7 RN Supplement

The Department of Health and Aged Care will be developing a form to be made available to Residential Service Providers to capture information relating to the provision of Registered Nurses within their facilities, including the amount of time that they have been available to provide care

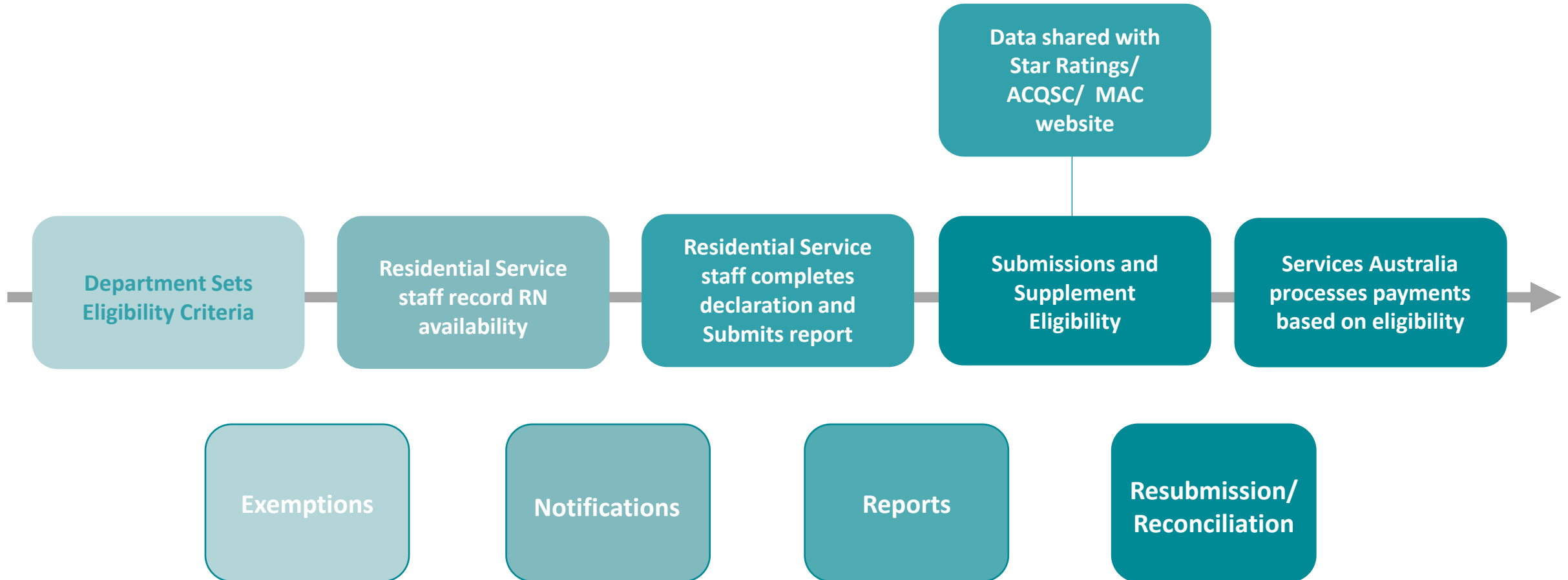
This information will be collated and sent to Services Australia, who will make payments to providers who meet the eligibility criteria – at a high level, that criteria includes number of occupied bed days and the number of nurses provided



Delivery Approach



Key Screens & Elements





Sector Partner Pulse survey

Janine Bennett

Engagement Lead |
Digital Business and Sector Engagement Branch



A group of four diverse people (three women and one man) are shown from the chest up, laughing heartily. They are in a bright, indoor setting, possibly a meeting room. The woman in the center has curly hair and is wearing a white lace top. The man next to her has glasses and a beard, wearing a blue shirt. The woman on the far left has long blonde hair and is wearing a light-colored top. The man on the far right is partially visible, also smiling. The background is softly blurred, showing windows and indoor plants.

THANK YOU

NEXT MEETING:

11am, Friday 21 April

Note: No meeting on Good Friday