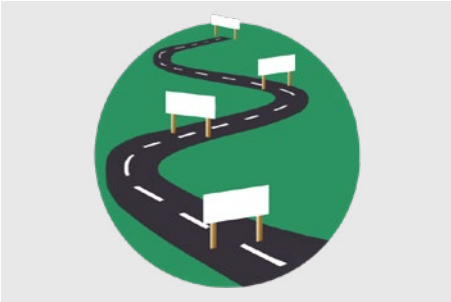




Project Updates

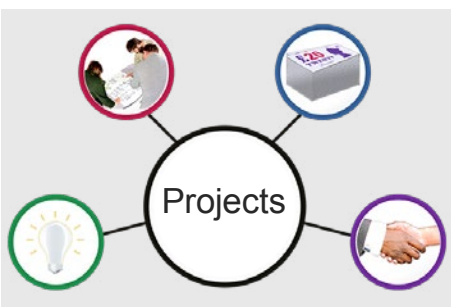


These are the project updates from the Roadmap Implementation Governance Group meeting.

We say **RIGG** for short.



The meeting was on 14 November 2022.



The Department is doing 4 Roadmap projects.



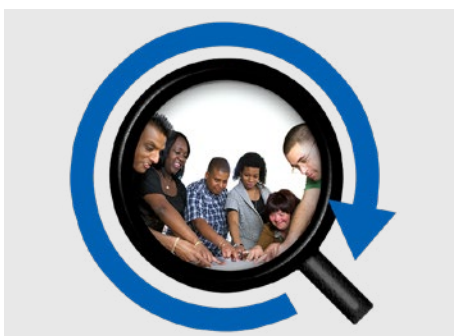
At our RIGG meeting we talked about what we are doing in each project.

National Centre of Excellence in Intellectual Disability Health



The National Centre of Excellence in Intellectual Disability Health will help people with intellectual disability get better health services.

We say **the Centre** for short.



The Centre will do lots of **research** about health care for people with intellectual disability.



Research means to find out new things about something.



The centre will also help people with intellectual disability to find the right health services.



The centre will also help other roadmap projects.

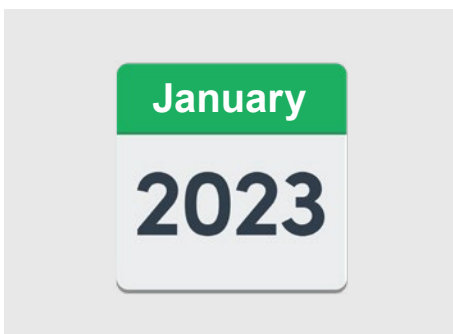


The Government has agreed to give money for the Centre.



An organisation will need to run the Centre.

We will look for an organisation to do this.



This will start in January 2023.

Curriculum Development in Intellectual Disability Health



This project is called **curriculum development**.

Curriculum development is about training for people who are learning to be health workers.



We will make a guide that says what workers need to learn and do.

We call this the **intellectual disability capability framework**.



The guide will help health workers learn to give better health care to people with intellectual disability.



Universities will use the guide to teach students about people with intellectual disability.



We asked some experts to write the guide.

An **expert** is someone who knows a lot about health topics.



The experts have started writing the guide.



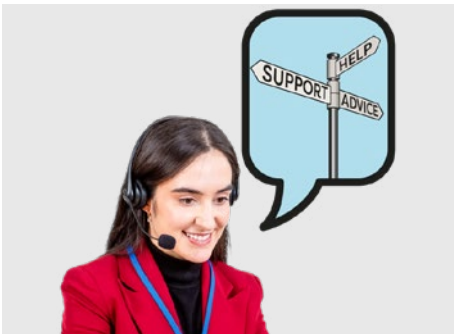
We will ask people to look at the guide and tell us if it is good.

Annual Health Assessments



This project is about **annual health assessments**.

An **annual health assessment** is a big health check you get from your doctor each year.



We want to make it easier for more people to have annual health assessments.



We want GPs to use a special form for annual health assessments.



We will give them this special form for free.

Primary Care Enhancement Program PCEP



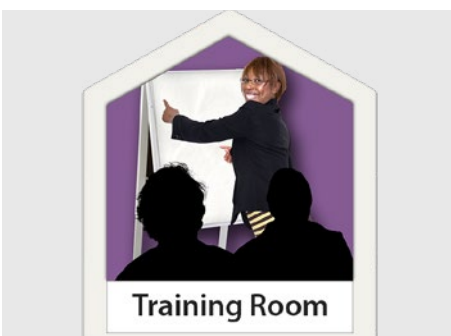
The **Primary Care Enhancement Program** will help people with intellectual disability get better health care.

PCEP for short.

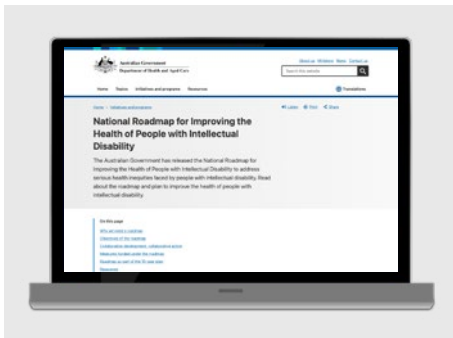


The PCEP has made information for

- People with intellectual disability
- Families and carers
- Health workers.

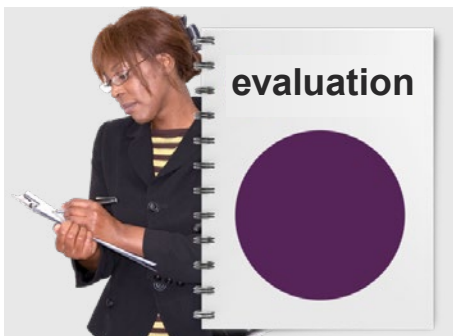


The PCEP has also made training for health workers.



PCEP information is now on the Department website

www.bit.ly/pcep-info



We have asked an organisation to do an **evaluation** of the PCEP.

An **evaluation** means checking that the PCEP is doing what we want it to do.

Council for Intellectual Disability made this document Easy Read. **CID** for short. You need to ask CID if you want to use any pictures in this document. You can contact CID at business@cid.org.au.