



Australian Government
Department of Health and Aged Care

COVID-19 Vaccine Roll-out

02 March 2023

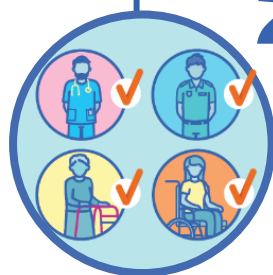
Data as at:
01 Mar 2023
Updated weekly

Total vaccine doses



65,006,181 total vaccine
doses administered

+143,391 weekly increase



20,127,111

people (16+) have received at
least one dose (>95%)

19,835,093

people (16+) have received at
least two doses (>95%)



14,358,849

people (16+) have received
three doses



5,496,490

people (16+) have received
four doses

NSW
20,153,351
(+44,449 weekly
increase)

VIC
16,909,328
(+33,957 weekly
increase)

QLD
12,250,862
(+25,207 weekly
increase)

WA
7,064,356
(+11,097 weekly
increase)

TAS
1,478,914
(+4,990 weekly
increase)

SA
4,536,500
(+14,295 weekly
increase)

ACT
1,985,851
(+8,948 weekly
increase)

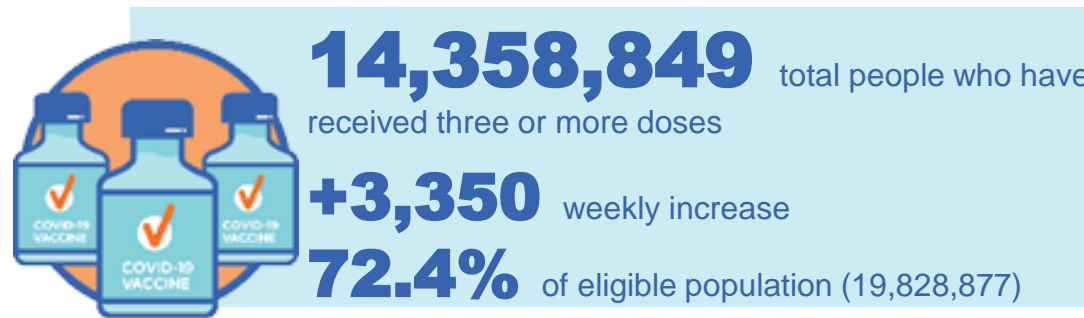
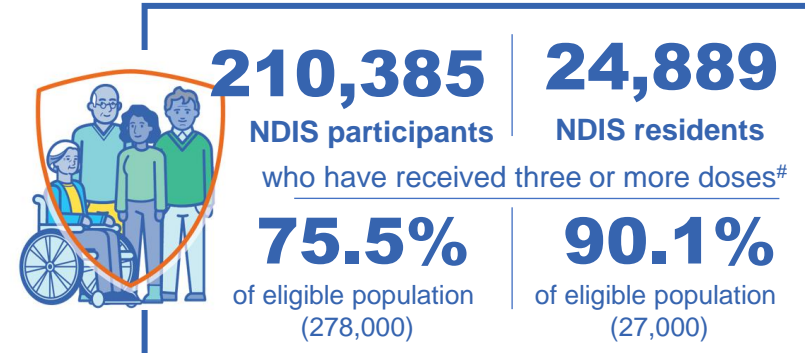
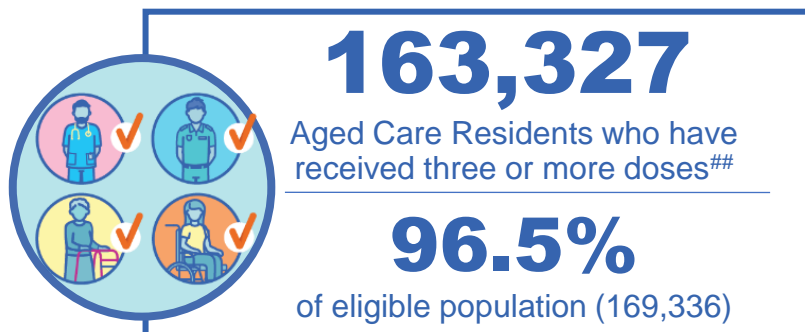
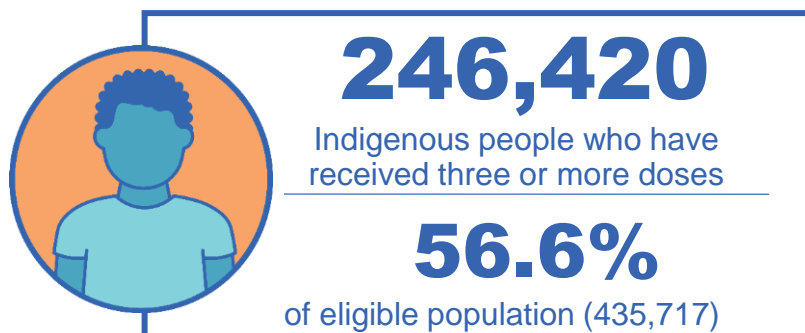
NT
627,019
(+448 weekly
increase)

*Administration state breakdown indicates state in which a vaccine was administered

Third Doses

Australia's COVID-19
Vaccine Program

Data as at:
01 Mar 2023##
Updated weekly



	Number of People	Weekly Increase	% of Eligible
ACT	281,919	90	80.9%
NSW	4,400,449	1,202	70.5%
NT	132,914	<10	79.6%
QLD	2,507,790	1,219	65.5%
SA	1,030,267	219	76.2%
TAS	325,620	<10	74.7%
VIC	3,813,321	1,114	74.5%
WA	1,737,077	396	83.4%

*People may belong to multiple groups and could be represented in the above breakdowns multiple times.
#NDIS participants data as at 26 February 2023. ##Aged Care Residents data as at 2 March 2023.

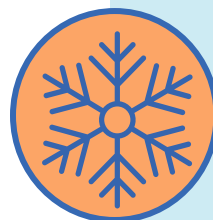
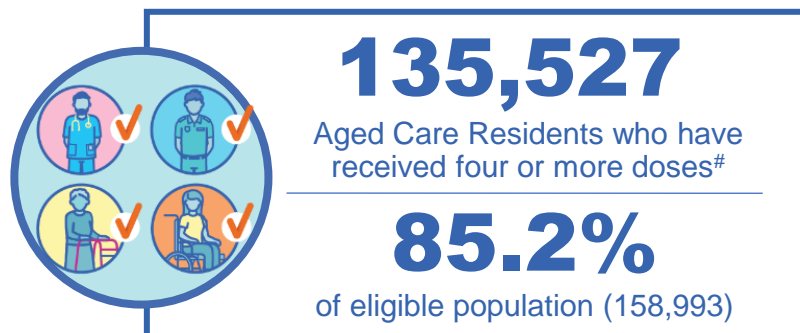
Source: Australian Immunisation Register

129,492 doses administered to persons
residing in other territories or with
missing residential information

Fourth Doses

Data as at:
01 Mar 2023
Updated weekly

Australia's COVID-19
Vaccine Program



5,496,490
+15,871
44.9%
3,072,255
76.6%

total people (16+) who have received four doses

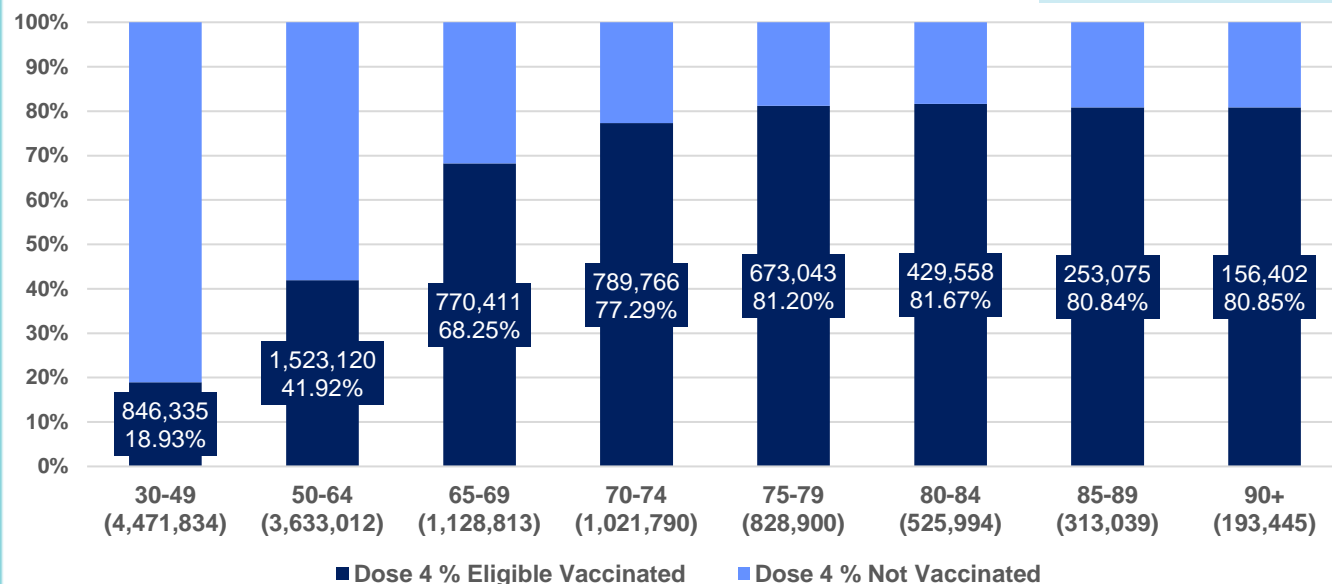
weekly increase (16+)

of eligible population (30+) (12,116,827)

total people (65+) who have received four doses

of eligible population (65+) (4,011,981)

% Individuals eligible vaccinated by current age



	Number of People 16+	Weekly Increase
ACT	122,409	615
NSW	1,752,868	5,232
NT	29,971	106
QLD	1,041,377	2,673
SA	429,288	1,277
TAS	146,519	447
VIC	1,374,571	4,345
WA	568,161	1,404

31,326

doses administered to persons
residing in other territories or with
missing residential information

Source: Australian Immunisation Register

*People become eligible for a fourth dose three months after their third dose. Individuals may belong to multiple groups and could be represented in the above multiple times.

#Aged Care Residents data as at 02 March 2023.

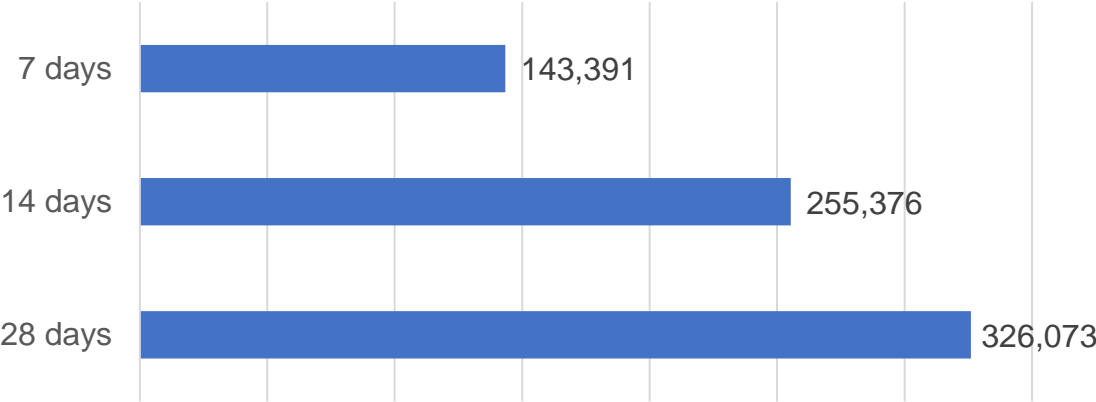
Please note, that as of 20th February 2023, ATAGI announced the expansion of fourth dose eligibility. Our external reports do not currently capture the increased eligibility but will be updated shortly to align with the latest ATAGI advice.

Vaccine milestone charts

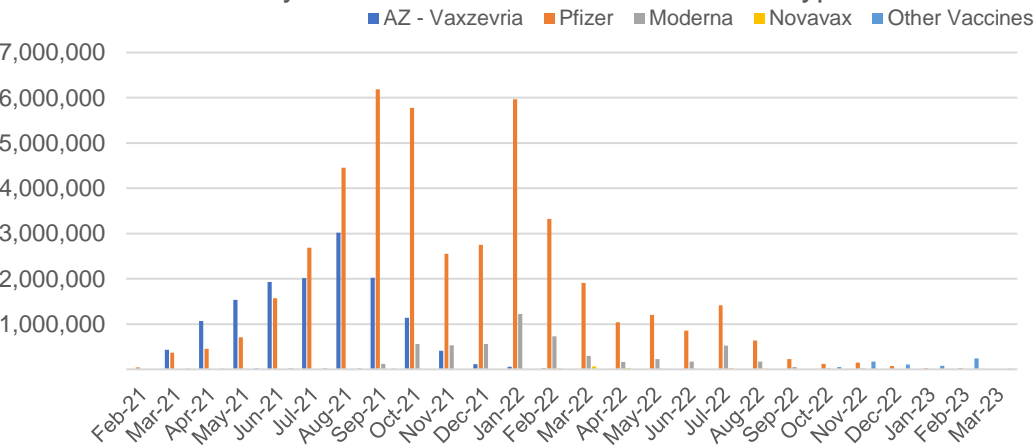
Australia's COVID-19
Vaccine Program

Data as at:
01 Mar 2023
Updated weekly

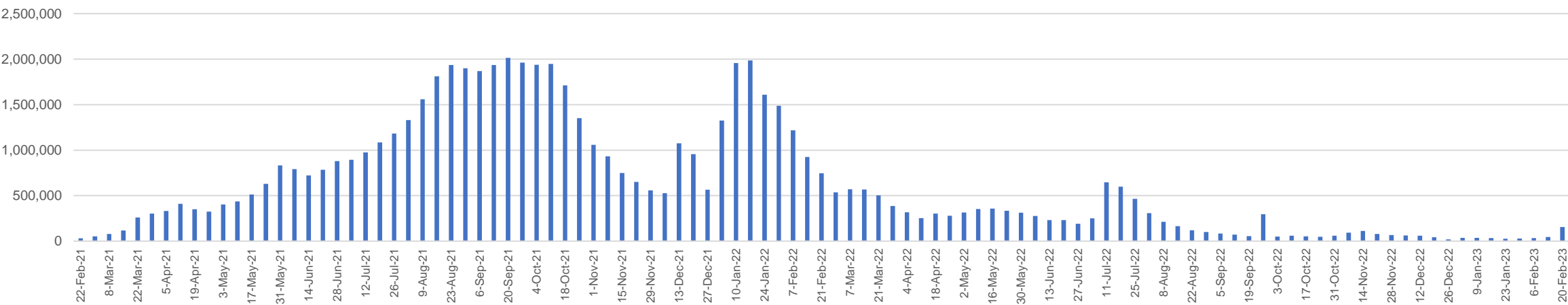
Doses Reported



Doses by administration month and vaccine type



Doses Administered by Week



*Sourced from the Australian Immunisation Register.

Data as at:
01 Mar 2023
Updated weekly

Doses by age and jurisdiction

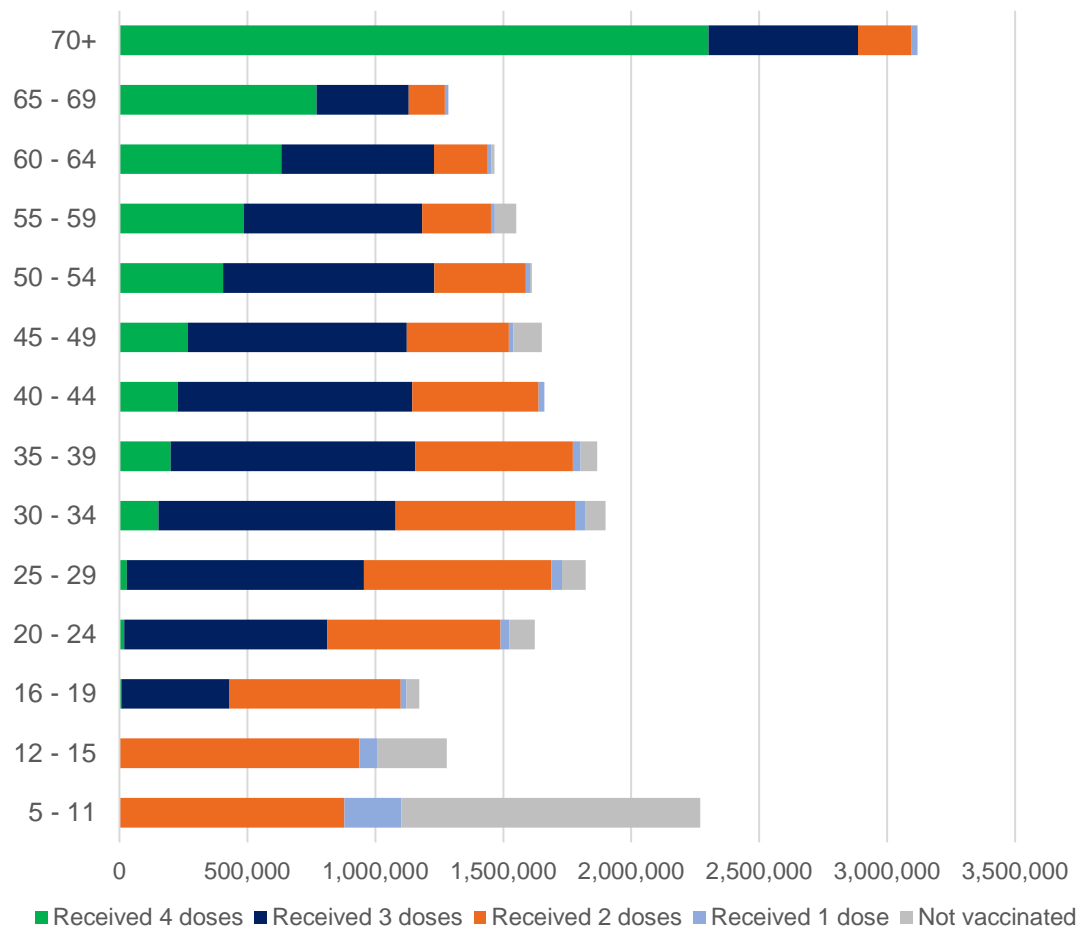
	AUS	ACT	NSW	NT	QLD	SA	TAS	VIC	WA
5 to 11 - dose 1	1,100,979	29,767	330,505	11,458	189,437	76,841	25,925	299,922	128,009
5 to 11 - dose 2	878,709	26,547	272,514	8,249	145,947	61,861	21,685	238,489	98,519
5 to 11 - population	2,269,663	40,719	711,525	25,120	476,567	149,048	45,549	568,488	252,235
5 to 11 % with dose 1	48.51%	73.10%	46.45%	45.61%	39.75%	51.55%	56.92%	52.76%	50.75%
5 to 11 % with dose 2	38.72%	65.20%	38.30%	32.84%	30.62%	41.50%	47.61%	41.95%	39.06%
12 to 15 - dose 1	1,006,352	20,026	308,391	10,068	195,417	65,889	21,975	262,670	111,830
12 to 15 - dose 2	937,716	19,364	291,279	8,922	179,410	61,359	20,572	246,980	101,696
12 to 15 - population	1,279,387	20,888	399,352	13,190	278,225	85,541	27,469	313,711	140,783
12 to 15 % with dose 1	78.66%	95.87%	77.22%	76.33%	70.24%	77.03%	80.00%	83.73%	79.43%
12 to 15 % with dose 2	73.29%	92.70%	72.94%	67.64%	64.48%	71.73%	74.89%	78.73%	72.24%
16 and over - dose 1	20,127,111	353,990	6,326,147	170,990	3,890,752	1,379,039	443,838	5,186,276	2,111,118
16 and over - dose 2	19,835,093	348,828	6,240,732	167,107	3,832,894	1,353,286	436,137	5,122,084	2,084,401
16 and over - dose 3	14,358,849	281,919	4,400,449	132,914	2,507,790	1,030,267	325,620	3,813,321	1,737,077
16 and over - population	20,629,070	364,811	6,504,442	193,211	4,161,009	1,471,062	465,436	5,279,175	2,185,967
16 and over % with dose 1	97.57%	97.03%	97.26%	88.50%	93.51%	93.74%	95.36%	98.24%	96.58%
16 and over % with dose 2	96.15%	95.62%	95.95%	86.49%	92.11%	91.99%	93.71%	97.02%	95.35%
16 and over % with dose 3	69.60%	77.28%	67.65%	68.79%	60.27%	70.04%	69.96%	72.23%	79.46%
30 and over - dose 1	15,752,855	274,394	4,977,334	126,947	3,041,849	1,096,591	353,088	4,051,955	1,654,422
30 and over - dose 2	15,559,173	270,861	4,918,775	124,733	3,005,369	1,080,844	348,248	4,007,302	1,637,117
30 and over - dose 3	12,160,127	231,589	3,756,628	105,020	2,181,123	881,570	282,029	3,190,128	1,435,483
30 and over - dose 4	5,441,710	120,483	1,734,250	29,315	1,033,201	426,305	145,332	1,358,823	563,315
30 and over - population	16,012,407	268,806	5,065,001	140,954	3,219,394	1,157,853	368,927	4,079,079	1,709,089
30 and over % with dose 1	98.38%	>99%	98.27%	90.06%	94.49%	94.71%	95.71%	>99%	96.80%
30 and over % with dose 2	97.17%	>99%	97.11%	88.49%	93.35%	93.35%	94.39%	98.24%	95.79%
30 and over % with dose 3	75.94%	86.15%	74.17%	74.51%	67.75%	76.14%	76.45%	78.21%	83.99%
30 and over % with dose 4	33.98%	44.82%	34.24%	20.80%	32.09%	36.82%	39.39%	33.31%	32.96%
65 and over - dose 1	4,404,570	64,853	1,424,139	20,588	856,778	351,181	115,181	1,099,881	433,528
65 and over - dose 2	4,365,330	64,054	1,411,450	20,325	850,443	348,516	114,481	1,089,396	430,490
65 and over - dose 3	4,016,879	60,785	1,286,558	18,521	781,804	327,000	108,136	994,829	408,918
65 and over - dose 4	3,072,255	51,581	978,594	12,086	609,923	258,903	87,467	742,921	311,162
65 and over - population	4,313,779	60,463	1,393,416	21,593	864,448	352,458	116,037	1,072,562	431,884
65 and over % with dose 1	>99%	>99%	>99%	95.35%	>99%	>99%	>99%	>99%	>99%
65 and over % with dose 2	>99%	>99%	>99%	94.13%	98.38%	98.88%	98.66%	>99%	>99%
65 and over % with dose 3	93.12%	>99%	92.33%	85.77%	90.44%	92.78%	93.19%	92.75%	94.68%
65 and over % with dose 4	71.22%	85.31%	70.23%	55.97%	70.56%	73.46%	75.38%	69.27%	72.05%

*National population will not equal sum of listed jurisdictions due to a small number of people counted in national population residing in some 'other' territories. Sum of state doses will not add to national total as some records are unable to be geocoded to a State or Territory.

Doses sourced from Australian Immunisation Register, population from ABS ERP June 2021

Vaccinations by age and location

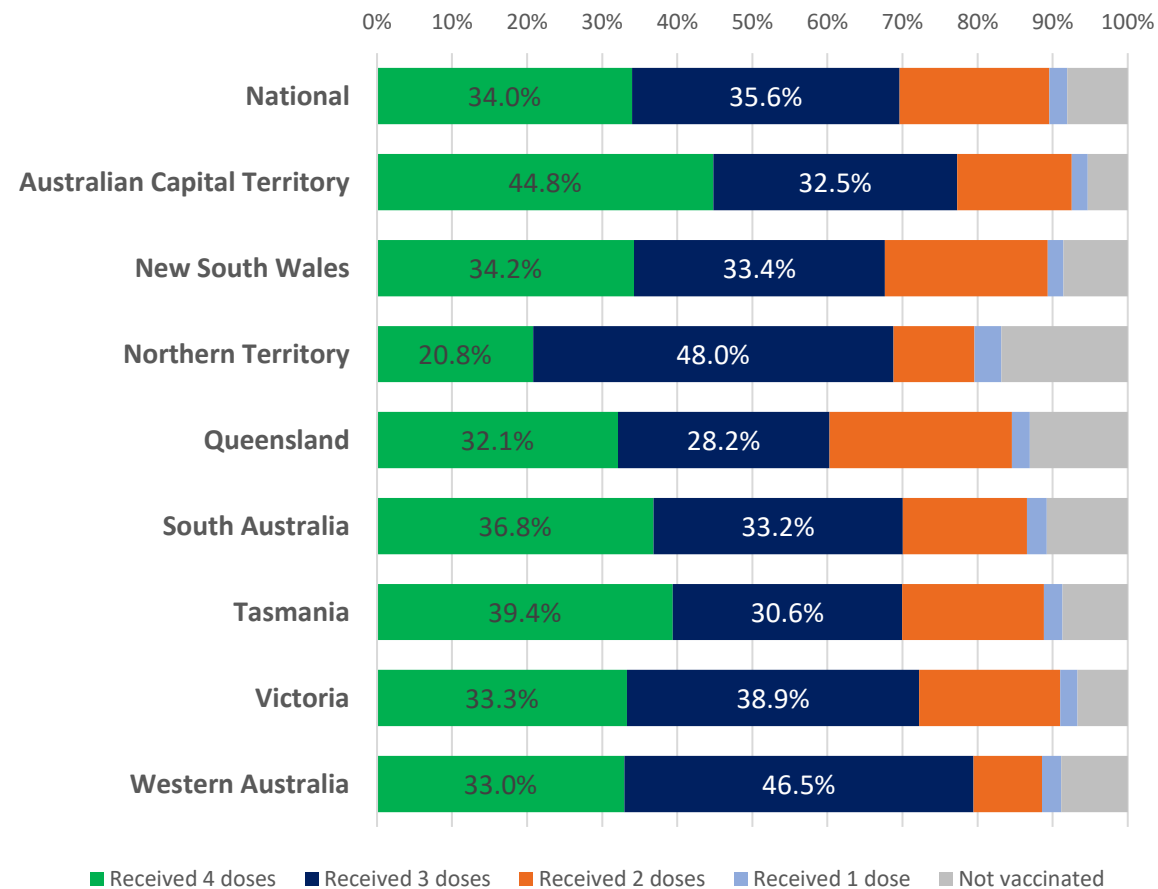
Number of people vaccinated by age



Data as at:
01 Mar 2023
Updated weekly

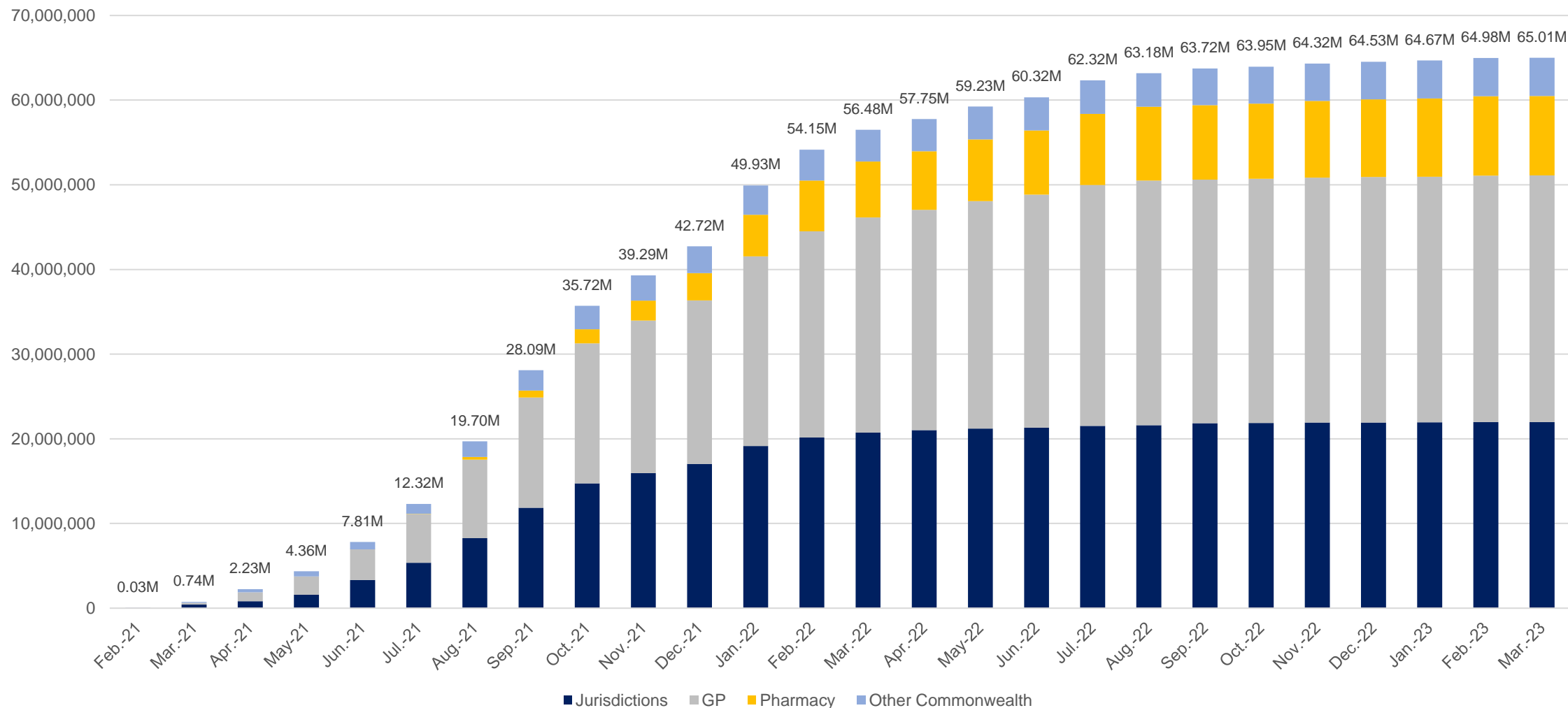
Australia's COVID-19
Vaccine Program

Individuals vaccinated by residential location



Cumulative doses administered by channel

Data as at:
01 Mar 2023
Updated weekly



Source: Australian Immunisation Register

Commonwealth primary care

Data as at:
01 Mar 2023
Updated weekly

Australia's COVID-19
Vaccine Program



Primary care vaccine administration sites#

4,563

GPs

177

ACCHS

2,998

Pharmacies



41,685,400 total vaccine doses administered
in primary care settings

+138,116 weekly increase

Primary care vaccinations by provider type

	Doses administered	Weekly increase
General Practice*	32,221,718	71,228
Pharmacy	9,463,682	66,888

NSW
14,307,354
(+43,965
weekly
increase)

VIC
10,328,187
(+33,626
weekly
increase)

QLD
8,069,815
(+26,942
weekly
increase)

WA
4,307,457
(+11,181
weekly
increase)

TAS
809,905
(+5,006
weekly
increase)

SA
2,560,071
(+14,376
weekly
increase)

ACT
696,725
(+4,719
weekly
increase)

NT
240,315
(+475
weekly
increase)

365,571

doses administered to persons
residing in other territories or with
missing residential information

*General practice includes Aboriginal Community Health Centres, Royal Flying Doctor Service and other Commonwealth vaccination facilities

#Primary care site numbers are based on the number of sites participating in the rollout as at 27 February 2023.

Source: Australian Immunisation Register

Aboriginal and Torres Strait Islander peoples

Number of people vaccinated

Data as at:
01 Mar 2023
Updated weekly

Australia's COVID-19
Vaccine Program



People (16+) with at least one dose

453,418 85.5%

People (16+) with at least two doses

436,150 82.3%



Eligible people (16+) with three doses

246,420 56.6%

Eligible people (30+) with four doses

66,555 35.3%



People (12-15) with at least one dose

44,804 63.8%

People (12-15) with at least two doses

38,317 54.6%

114 Aboriginal community controlled health services (ACCHS) sites

1 ACT	22 NSW	16 NT	35 QLD	13 SA	2 TAS	7 VIC	18 WA
----------	-----------	----------	-----------	----------	----------	----------	----------

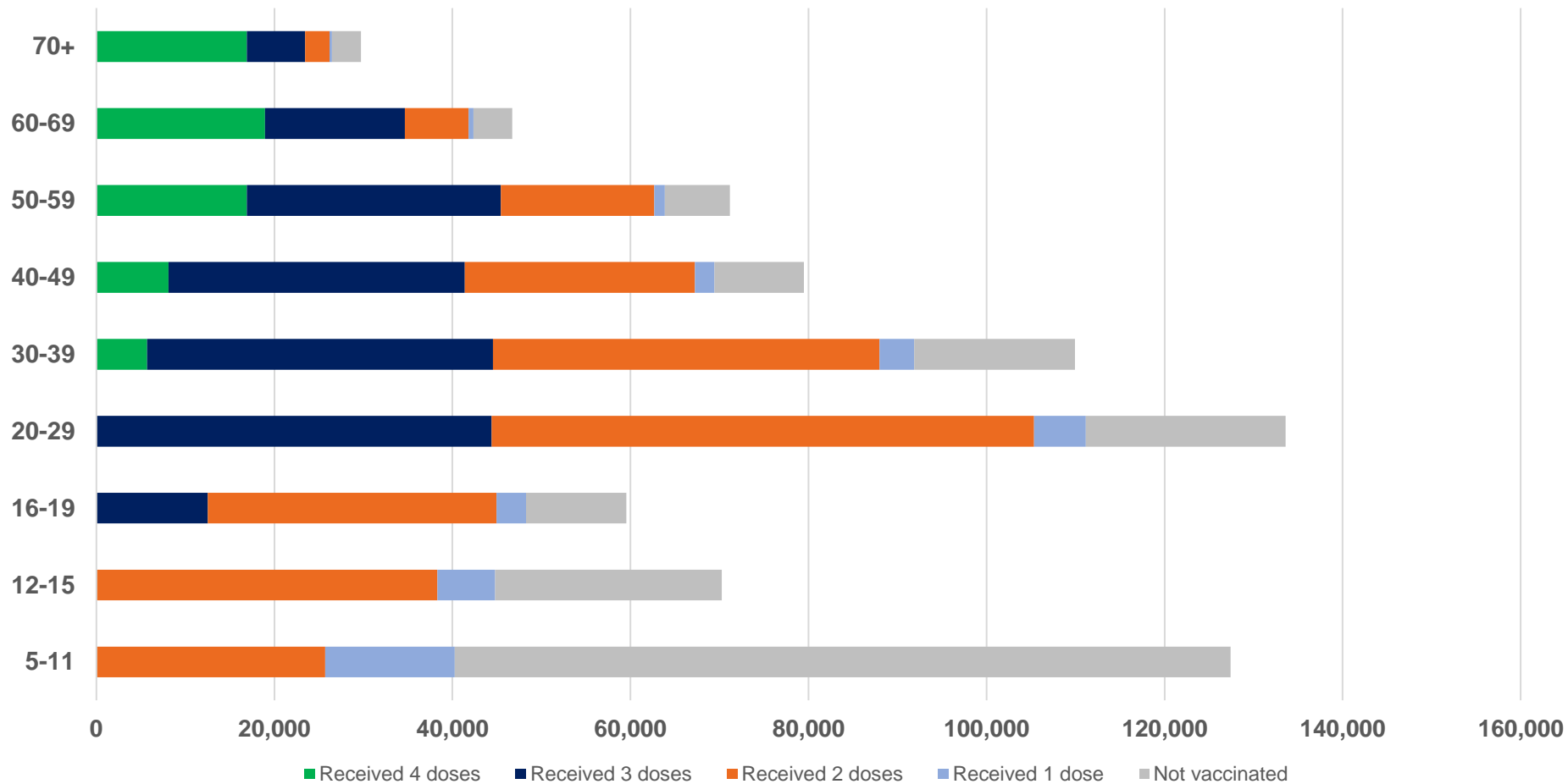
Residential State	Individuals Dose 1 % (16+)	Individuals Dose 2 % (16+)	Individuals Dose 3 % Eligible (aged 16+)	Individuals Dose 4 % Eligible (aged 30+)
ACT	92.4%	90.2%	65.8%	43.4%
NSW	87.8%	86.1%	53.2%	38.1%
NT	90.3%	86.4%	70.3%	26.7%
QLD	82.4%	78.9%	49.2%	37.8%
SA	81.4%	76.3%	61.1%	38.7%
TAS	89.2%	86.8%	60.2%	42.5%
VIC	90.9%	89.0%	62.6%	36.8%
WA	87.6%	82.3%	66.4%	30.3%
Unknown/Other Territories	72.8%	67.8%	51.5%	24.8%
National Coverage %	85.5%	82.3%	56.6%	35.3%
Number with a Dose	453,418	436,150	246,420	66,555
Total / Eligible Population	530,149	530,149	435,717	188,340

Identifying as Aboriginal and Torres Strait Islander is optional and the estimated population may be under reported. Numbers include all Aboriginal and Torres Strait Islander peoples who have received a vaccination, and are not limited to those administered in an ACCHS setting. The total population refers to the number of individuals that identify as Aboriginal and Torres Strait Islander in the Australian Immunisation Register, while the eligible population refers to the number of these individuals who meet the criteria for a further dose (based on completion of previous doses, age, and time period elapsed since last dose). Please note there may be people under 30 who are eligible, but these are not included in coverage rates or population to protect privacy.

Aboriginal and Torres Strait Islander peoples

Number of people vaccinated by age

Data as at:
01 Mar 2023
Updated weekly



Source: Australian Immunisation Register

Individuals with Culturally and Linguistically Diverse (CALD) backgrounds data

Data as at:
19 February 2023
Updated weekly

Australia's COVID-19
Vaccine Program

People over the age of 16

CALD population *	Total number of individuals in cohort	% People with at least one dose	% People who received two doses	% of eligible people who received three or more doses
General population	20,629,070	>95.0%	>95.0%	72.4%
People born overseas	4,296,068	94.5%	93.9%	73.6%
Speaks a language other than English at home	3,984,571	94.0%	93.4%	69.5%

	General population			Born Overseas			Speaks a language other than English at home		
	% with at least one dose	% who received two doses	% of eligible people who received three or more doses	% with at least one dose	% who received two doses	% of eligible people who received three or more doses	% with at least one dose	% who received two doses	% of eligible people who received three or more doses
ACT	>95.0%	>95.0%	80.8%	>95.0%	>95.0%	79.4%	>95.0%	94.8%	76.7%
NSW	>95.0%	>95.0%	70.5%	94.8%	94.3%	71.2%	94.0%	93.4%	66.4%
NT	88.5%	86.5%	79.6%	94.8%	94.4%	88.3%	93.7%	93.3%	87.0%
Qld	93.5%	92.1%	65.5%	92.1%	91.5%	68.2%	92.4%	91.7%	64.8%
SA	93.7%	92.0%	76.2%	92.7%	91.8%	75.8%	91.6%	90.6%	72.0%
Tas	>95.0%	93.7%	74.7%	92.8%	92.2%	76.8%	92.5%	91.9%	72.8%
Vic	>95.0%	>95.0%	74.5%	>95.0%	94.7%	73.8%	94.6%	94.1%	69.8%
WA	>95.0%	>95.0%	83.4%	>95.0%	94.6%	85.6%	>95.0%	94.6%	83.7%

*Individuals with Culturally and Linguistically Diverse (CALD) backgrounds are as reported in the 2021 Census, excluding those who have since departed Australia; deceased persons; those born in the UK, Ireland or NZ; and Aboriginal and/or Torres Strait Islander peoples. There is overlap across CALD cohorts where individuals may have reported they had more than one CALD characteristic in the 2021 Census.

Small negative changes may appear when compared with the previous report due to perturbation, data maturity and changes in population sizes.

Source: Australian Immunisation Register linked to the Multi-Agency Data Integration Project (Census 2021 characteristics). Coverage rates for the general population are as published for 22 February 2023.

Data as at:
2 March 2023
Updated weekly

Residential aged care vaccination rollout



170,593

Aged care residents with at least one dose



169,336

Aged care residents with at least two doses



163,327

Aged care residents with at least three doses



135,527

Aged care residents with at least four doses



>99%

Aged care workers with at least two doses nationally

Aged care resident vaccinations

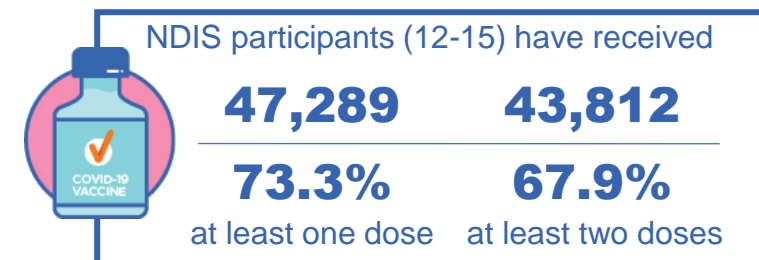
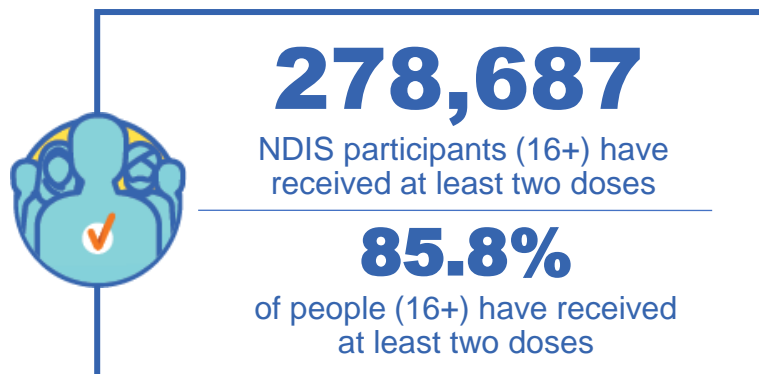
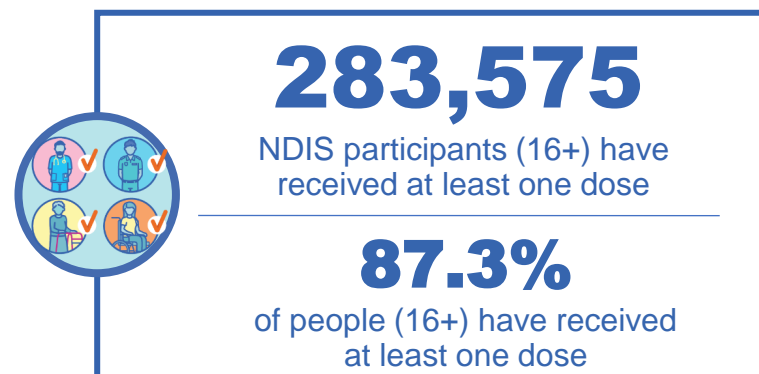
	Aged care residents with at least one dose	Aged care residents with at least two doses	Aged care residents with at least three doses	Aged care residents with at least four doses
NSW	97.0%	96.3%	92.7%	75.6%
VIC	96.9%	96.4%	93.6%	80.8%
QLD	95.1%	94.4%	90.6%	73.9%
SA	96.0%	94.9%	91.3%	75.4%
WA	96.9%	96.1%	92.3%	74.6%
TAS	96.0%	95.1%	92.3%	77.9%
NT	96.9%	95.1%	90.7%	73.3%
ACT	98.0%	97.5%	95.1%	83.3%
National	96.5%	95.8%	92.4%	76.7%

Source: Residential aged care provider self-reported COVID-19 vaccination information and matched AIR data of residents in permanent residential RACFs.

National Disability Insurance Scheme (NDIS) reported vaccinations

Data as at:
26 Feb 2023
Updated weekly

Australia's COVID-19
Vaccine Program



NDIS participant vaccinations

	% People aged 16+ with at least one dose	% People aged 16+ with at least two doses	% People aged 16+ with three doses	% People aged 16+ with four doses
ACT	89.8%	88.7%	83.1%	39.5%
NSW	87.8%	86.5%	74.6%	35.6%
NT	78.6%	76.3%	78.9%	27.8%
QLD	85.3%	83.7%	70.7%	29.7%
SA	85.3%	83.4%	77.4%	31.4%
TAS	87.4%	85.6%	76.0%	32.6%
VIC	88.5%	87.1%	76.8%	33.3%
WA	88.7%	87.0%	81.4%	33.7%
National	87.3%	85.8%	75.5%	33.2%

Source: Linkage between National Disability Insurance Agency data and the Australian Immunisation Register. 'Total' NDIS Participant number last obtained as at 05 February 2023. Australian Immunisation Register data as at 26 February 2023. Includes all participants regardless of residence type.

Explanatory Notes

The Australian Immunisation Register (AIR). The Australian Immunisation Register is a national register that records all vaccines given to all people in Australia.

People received at least x dose/s. The count of unique people who have received at least x dose/s of a COVID-19 vaccine. People with at least x dose/s encompasses people who received x dose/s or more. Please note, to capture a person's current level of protection, this methodology includes any doses an individual received overseas where they have been uploaded into the Australian Immunisation Register, and where the vaccine brand is recognised by the TGA. Some people may not be included in this count where they are viewed as no longer in scope of the vaccination rollout (for example, where a person has permanently left Australia, or they have passed away).

Coverage calculations. First and second dose rates are calculated by taking the number of unique people who have received the corresponding dose from the Australian Immunisation Register and dividing this by the Australian Bureau of Statistics Estimated Residential Population (2021). For doses that are third in sequence or above, the coverage rates often refer to the *eligible* population – that is, the number of people with the dose over the number of people who meet the criteria for that dose in the Australian Immunisation Register. Vaccine coverage uses the state of residence (based on a person's Medicare address).

Eligible population. Eligible population refers to the number of these individuals who meet the criteria for a given dose based on completion of previous doses, age, and time period elapsed since last dose. Please note that the Australian Immunisation Register cannot identify immunocompromised individuals.

Vaccine doses administered. The total number of COVID-19 doses administered refers to the number of doses administered rather than the number of people who have received a COVID-19 vaccine. In most cases (unless otherwise specified) all doses are included (regardless of age of recipient or the dose number), and when these numbers are provided by state, it is typically the state that the dose was physically administered in as opposed to the state where the person resides on a usual basis.

Aboriginal and Torres Strait Islander Peoples. The Aboriginal and Torres Strait Islander population refers to the number of individuals that identify as Aboriginal and Torres Strait Islander in the Australian Immunisation Register. Identifying as Aboriginal and Torres Strait Islander is optional, and the estimated population may be under reported. Numbers include all Aboriginal and Torres Strait Islander peoples who have received a vaccination and are not limited to those administered in an ACCHS setting.

Update Information: Vaccine data is sourced from the Australian Immunisation Register as at 11:59pm 01 March 2023 unless otherwise noted.