



Australian Government

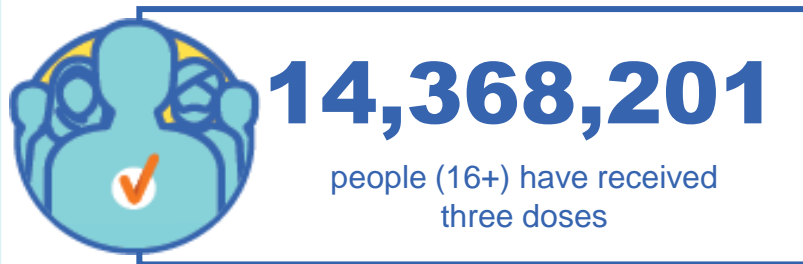
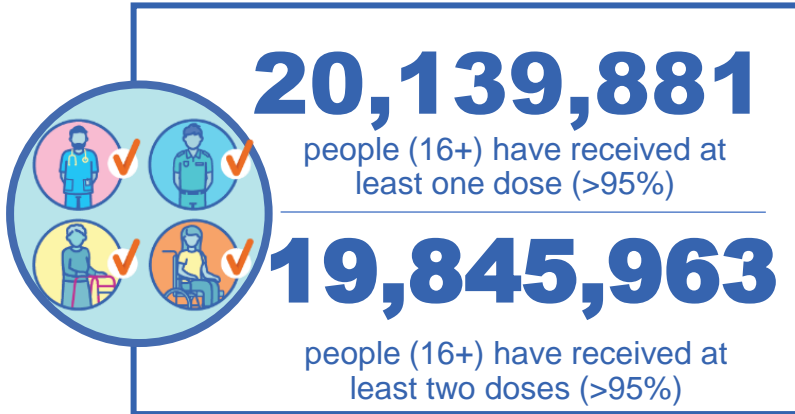
Department of Health and Aged Care

COVID-19 Vaccine Roll-out

23 March 2023

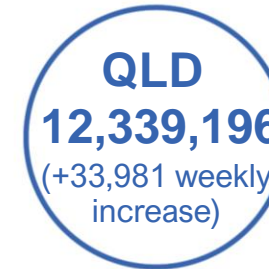
Data as at:
22 Mar 2023
Updated weekly

Total vaccine doses



65,492,360 total vaccine doses administered

+191,868 weekly increase

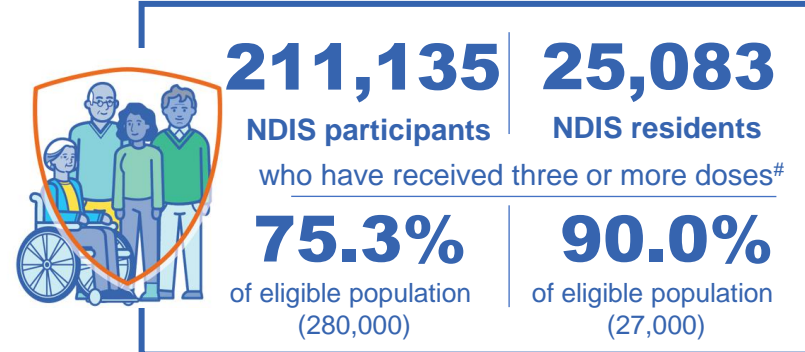
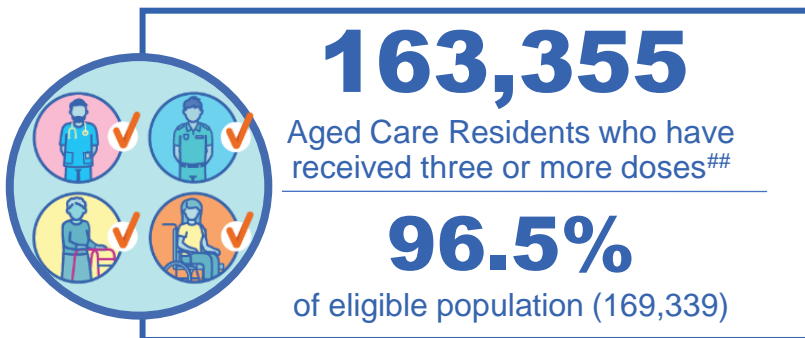
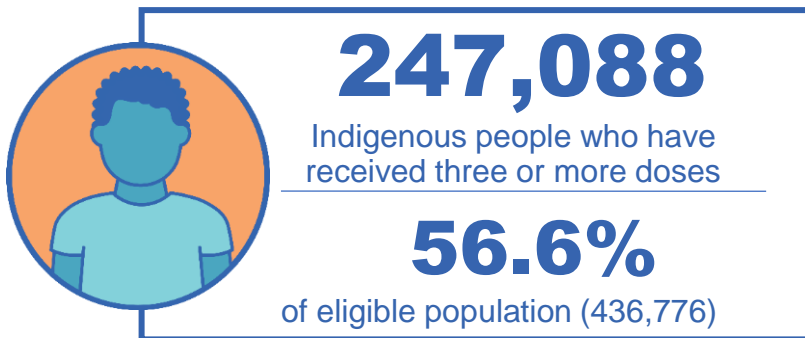


*Administration state breakdown indicates state in which a vaccine was administered

Source: Australian Immunisation Register

Third Doses

Data as at:
22 Mar 2023##
Updated weekly



14,368,201 total people who have received three or more doses

+3,911 weekly increase

72.4% of eligible population (19,840,500)

	Number of People	Weekly Increase	% of Eligible
ACT	282,069	63	80.8%
NSW	4,404,000	1,675	70.6%
NT	132,934	<10	79.5%
QLD	2,511,281	1,060	65.5%
SA	1,030,864	208	76.2%
TAS	325,755	82	74.7%
VIC	3,816,274	977	74.5%
WA	1,738,433	428	83.3%

126,591

doses administered to persons residing in other territories or with missing residential information


*People may belong to multiple groups and could be represented in the above breakdowns multiple times.
#NDIS participants data as at 19 March 2023. ##Aged Care Residents data as at 09 March 2023.

Source: Australian Immunisation Register

Fourth Doses

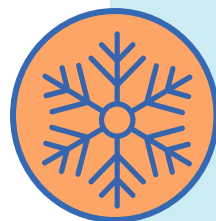
Data as at:
22 Mar 2023#
Updated weekly

Australia's COVID-19
Vaccine Program



135,527
Aged Care Residents who have received four or more doses#

85.2%
of eligible population (158,993)



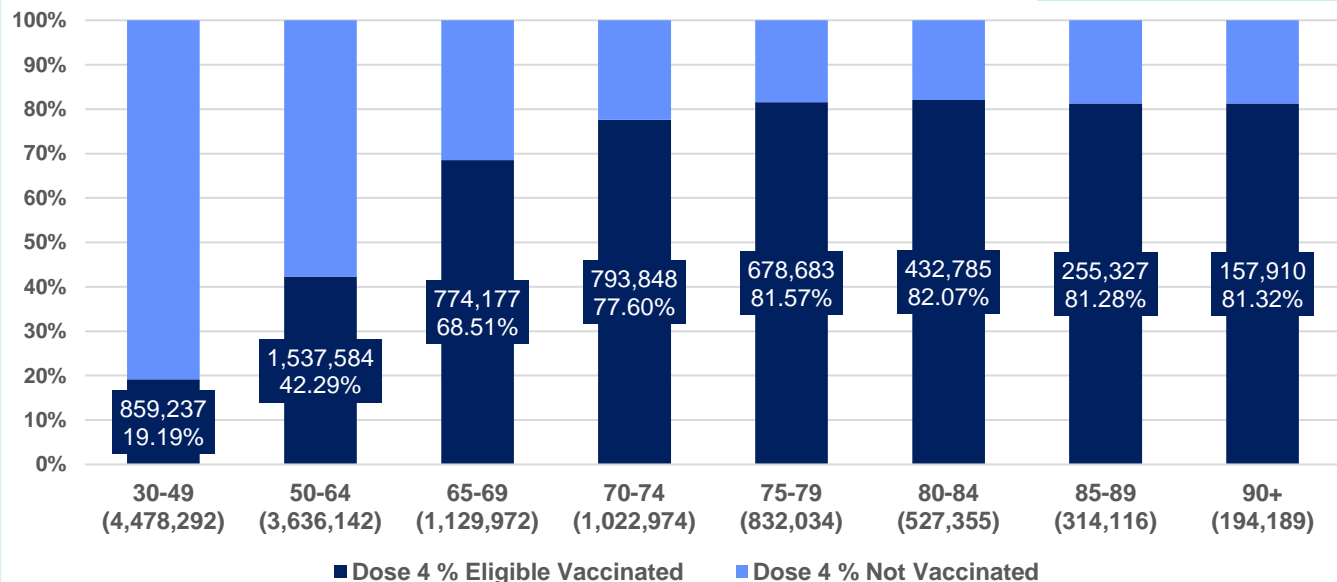
5,552,682
+23,240
45.2%
3,092,730
76.9%

total people (16+) who have received four doses
weekly increase (16+)

of eligible population (30+) (12,135,074)

total people (65+) who have received four doses
of eligible population (65+) (4,020,640)

% Individuals eligible vaccinated by current age



	Number of People 16+	Weekly Increase
ACT	124,230	725
NSW	1,771,644	7,636
NT	30,325	129
QLD	1,050,893	3,835
SA	433,275	1,670
TAS	148,162	764
VIC	1,390,718	6,759
WA	572,689	1,781

*People become eligible for a fourth dose three months after their third dose. Individuals may belong to multiple groups and could be represented in the above multiple times.

#Aged Care Residents data as at 02 March 2023.

Please note, that as of 20th February 2023, ATAGI announced the expansion of fourth dose eligibility. Our external reports do not currently capture the increased eligibility, but will be updated shortly to align with the latest ATAGI advice.

30,746

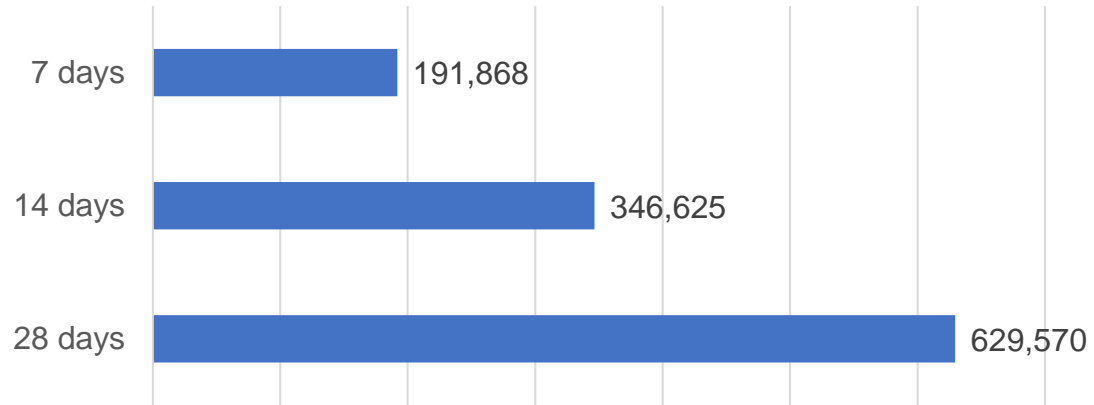
doses administered to persons residing in other territories or with missing residential information

Source: Australian Immunisation Register

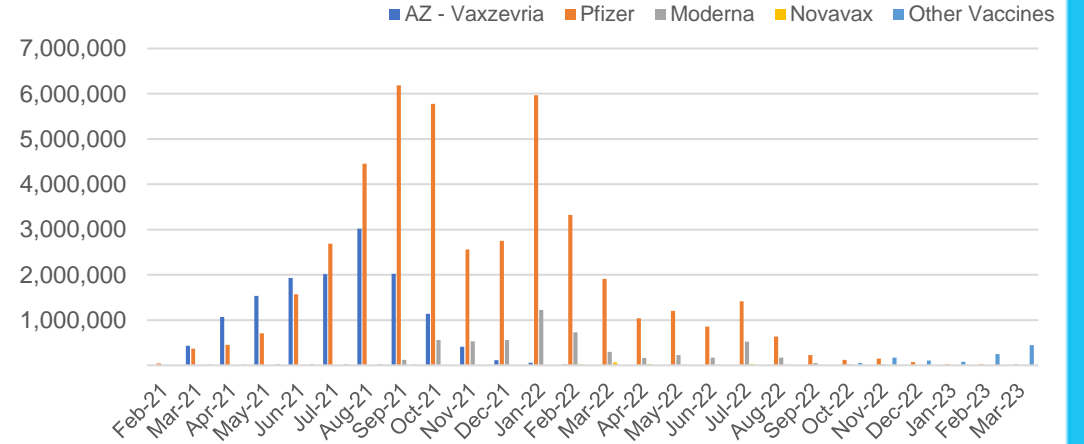
Vaccine milestone charts

Data as at:
22 Mar 2023
Updated weekly

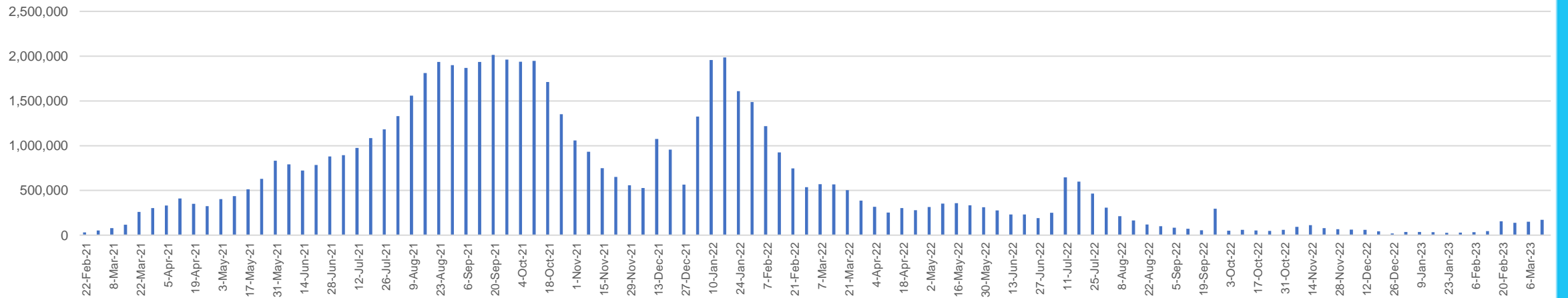
Doses Reported



Doses by administration month and vaccine type



Doses Administered by Week



*Sourced from the Australian Immunisation Register.

Data as at:
22 Mar 2023
Updated weekly

Doses by age and jurisdiction

	AUS	ACT	NSW	NT	QLD	SA	TAS	VIC	WA
5 to 11 - dose 1	1,090,140	29,519	327,379	11,347	187,537	76,144	25,662	297,105	126,703
5 to 11 - dose 2	871,057	26,376	270,346	8,158	144,632	61,331	21,468	236,466	97,569
5 to 11 - population	2,269,663	40,719	711,525	25,120	476,567	149,048	45,549	568,488	252,235
5 to 11 % with dose 1	48.03%	72.49%	46.01%	45.17%	39.35%	51.09%	56.34%	52.26%	50.23%
5 to 11 % with dose 2	38.38%	64.78%	38.00%	32.48%	30.35%	41.15%	47.13%	41.60%	38.68%
12 to 15 - dose 1	1,001,886	19,999	307,001	10,022	194,427	65,625	21,913	261,620	111,505
12 to 15 - dose 2	931,804	19,325	289,504	8,850	178,139	61,010	20,488	245,463	101,171
12 to 15 - population	1,279,387	20,888	399,352	13,190	278,225	85,541	27,469	313,711	140,783
12 to 15 % with dose 1	78.31%	95.74%	76.87%	75.98%	69.88%	76.72%	79.77%	83.40%	79.20%
12 to 15 % with dose 2	72.83%	92.52%	72.49%	67.10%	64.03%	71.32%	74.59%	78.24%	71.86%
16 and over - dose 1	20,139,881	354,221	6,329,413	171,185	3,895,963	1,380,176	444,040	5,190,913	2,114,281
16 and over - dose 2	19,845,963	349,038	6,243,425	167,270	3,837,846	1,354,224	436,318	5,126,036	2,087,324
16 and over - dose 3	14,368,201	282,069	4,404,000	132,934	2,511,281	1,030,864	325,755	3,816,274	1,738,433
16 and over - population	20,629,070	364,811	6,504,442	193,211	4,161,009	1,471,062	465,436	5,279,175	2,185,967
16 and over % with dose 1	97.63%	97.10%	97.31%	88.60%	93.63%	93.82%	95.40%	98.33%	96.72%
16 and over % with dose 2	96.20%	95.68%	95.99%	86.57%	92.23%	92.06%	93.74%	97.10%	95.49%
16 and over % with dose 3	69.65%	77.32%	67.71%	68.80%	60.35%	70.08%	69.99%	72.29%	79.53%
30 and over - dose 1	15,767,106	274,712	4,981,249	127,140	3,046,494	1,097,584	353,397	4,056,780	1,657,153
30 and over - dose 2	15,572,174	271,166	4,922,311	124,915	3,009,838	1,081,723	348,526	4,011,657	1,639,730
30 and over - dose 3	12,172,659	231,884	3,760,492	105,159	2,184,436	882,254	282,277	3,194,247	1,437,669
30 and over - dose 4	5,489,551	121,827	1,750,436	29,632	1,041,638	429,666	146,786	1,372,302	567,203
30 and over - population	16,012,407	268,806	5,065,001	140,954	3,219,394	1,157,853	368,927	4,079,079	1,709,089
30 and over % with dose 1	98.47%	>99%	98.35%	90.20%	94.63%	94.79%	95.79%	>99%	96.96%
30 and over % with dose 2	97.25%	>99%	97.18%	88.62%	93.49%	93.42%	94.47%	98.35%	95.94%
30 and over % with dose 3	76.02%	86.26%	74.24%	74.61%	67.85%	76.20%	76.51%	78.31%	84.12%
30 and over % with dose 4	34.28%	45.32%	34.56%	21.02%	32.36%	37.11%	39.79%	33.64%	33.19%
65 and over - dose 1	4,413,435	65,066	1,427,181	20,664	858,935	351,893	115,457	1,102,237	434,651
65 and over - dose 2	4,373,835	64,254	1,414,368	20,402	852,556	349,208	114,758	1,091,625	431,587
65 and over - dose 3	4,024,861	60,976	1,289,305	18,598	783,712	327,625	108,421	996,885	409,975
65 and over - dose 4	3,092,730	51,985	985,709	12,232	613,948	260,487	88,197	748,255	312,805
65 and over - population	4,313,779	60,463	1,393,416	21,593	864,448	352,458	116,037	1,072,562	431,884
65 and over % with dose 1	>99%	>99%	>99%	95.70%	>99%	>99%	>99%	>99%	>99%
65 and over % with dose 2	>99%	>99%	>99%	94.48%	98.62%	>99%	98.90%	>99%	>99%
65 and over % with dose 3	93.30%	>99%	92.53%	86.13%	90.66%	92.95%	93.44%	92.94%	94.93%
65 and over % with dose 4	71.69%	85.98%	70.74%	56.65%	71.02%	73.91%	76.01%	69.76%	72.43%

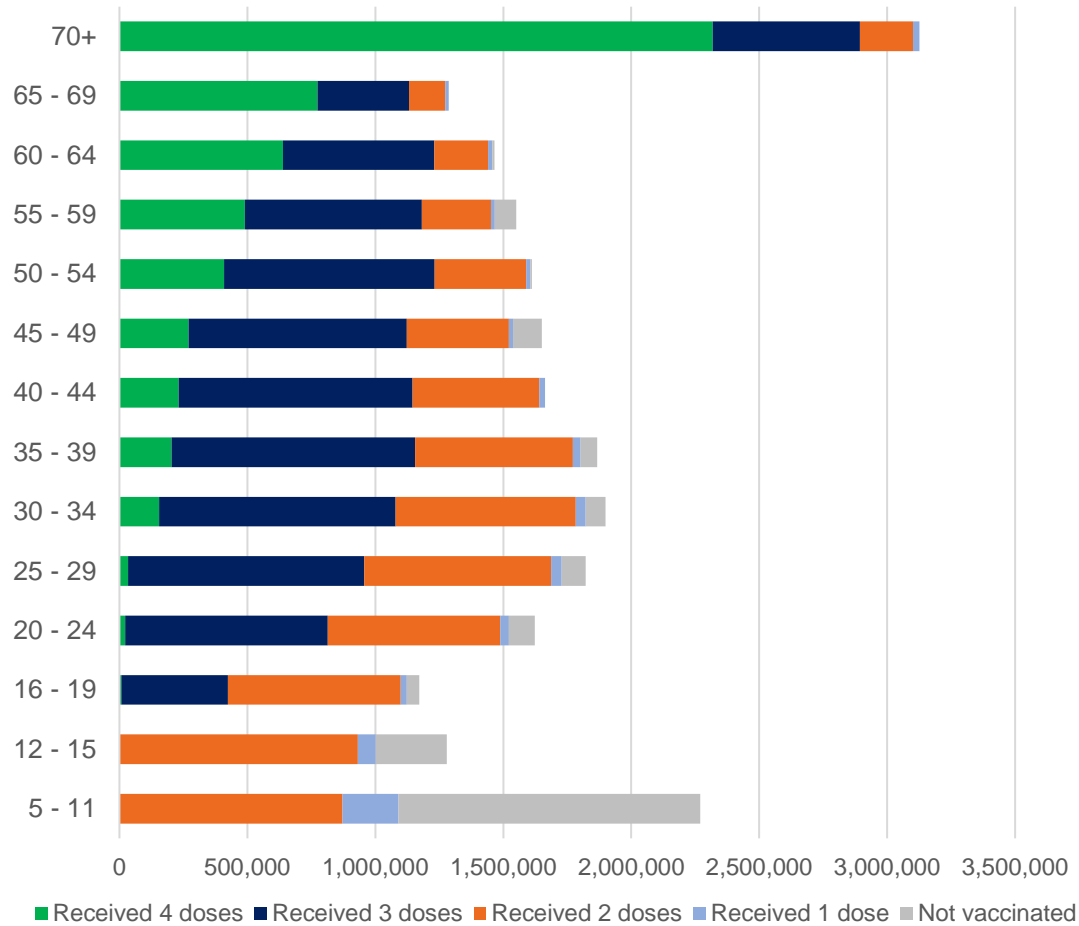
*National population will not equal sum of listed jurisdictions due to a small number of people counted in national population residing in some 'other' territories. Sum of state doses will not add to national total as some records are unable to be geocoded to a State or Territory.

Doses sourced from Australian Immunisation Register, population from ABS ERP June 2021

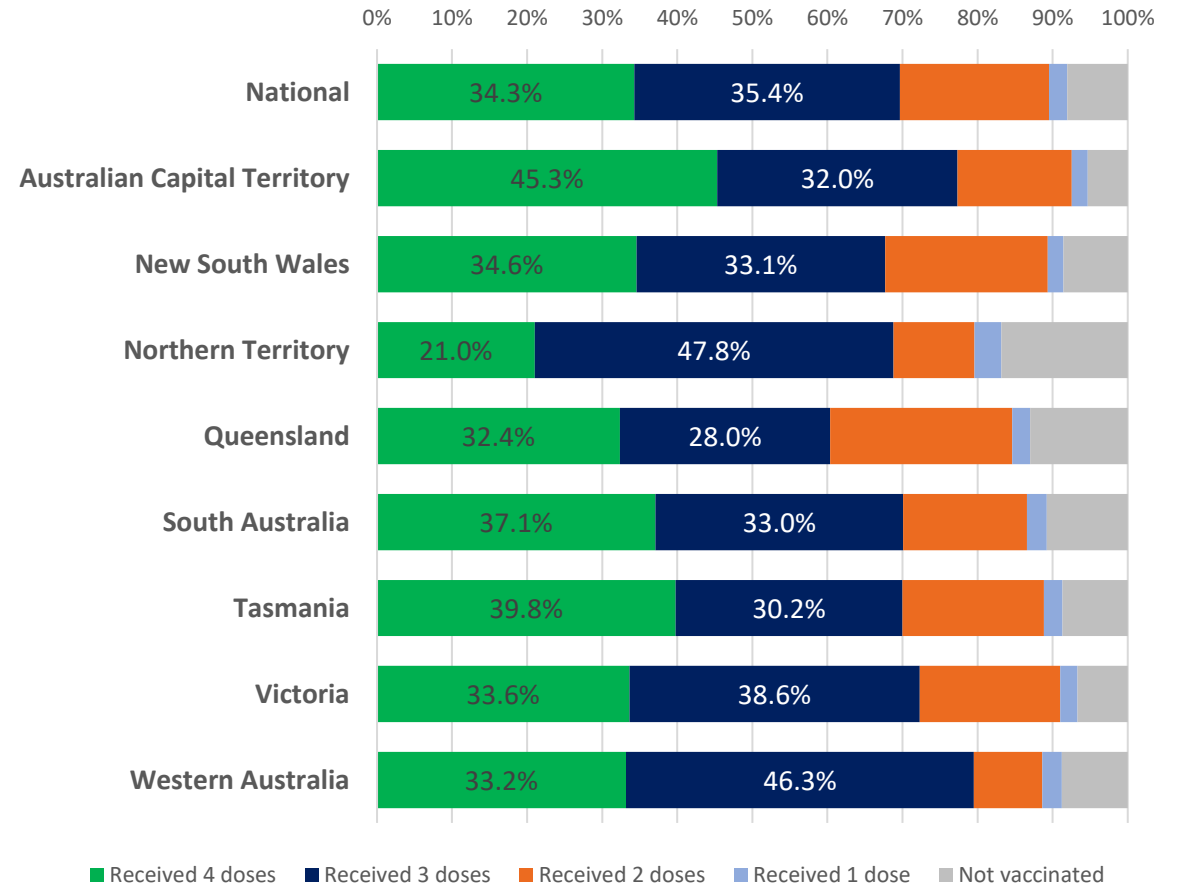
Data as at:
22 Mar 2023
Updated weekly

Vaccinations by age and location

Number of people vaccinated by age

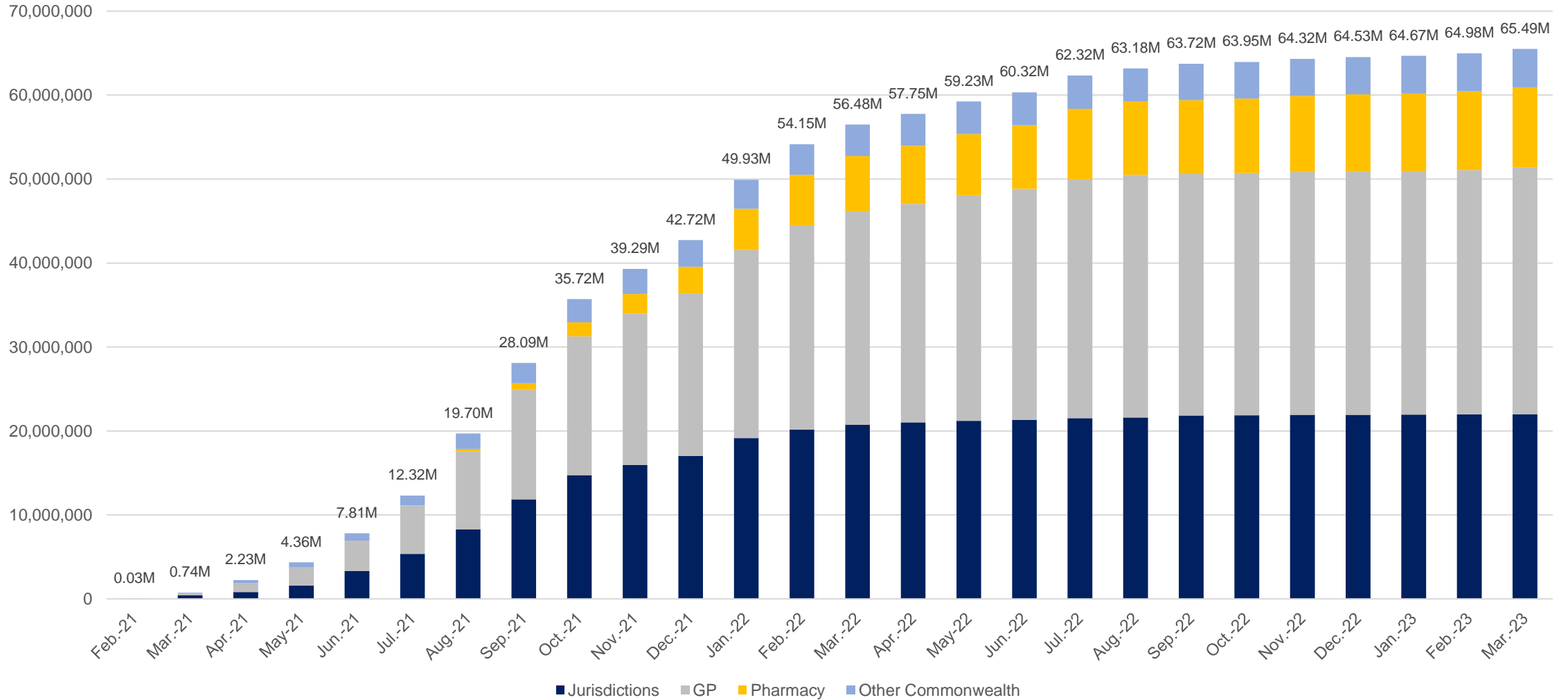


Individuals vaccinated by residential location



Data as at:
22 Mar 2023
Updated weekly

Cumulative doses administered by channel



Source: Australian Immunisation Register

Data as at:
22 Mar 2023
Updated weekly

Commonwealth primary care



Primary care vaccine administration sites*

4,466

GPs

172

ACCHS

3,063

Pharmacies



42,154,009 total vaccine doses administered
in primary care settings

+184,960 weekly increase

Primary care vaccinations by provider type

	Doses administered	Weekly increase
General Practice*	32,492,328	110,162
Pharmacy	9,661,681	74,798

NSW
14,459,693
(+57,244 weekly increase)

VIC
10,449,139
(+50,616 weekly increase)

QLD
8,162,305
(+34,551 weekly increase)

WA
4,342,951
(+13,510 weekly increase)

TAS
824,920
(+6,196 weekly increase)

SA
2,604,225
(+17,854 weekly increase)

ACT
710,028
(+5,459 weekly increase)

NT
242,090
(+556 weekly increase)

358,658

doses administered to persons residing in other territories or with missing residential information

*General practice includes Aboriginal Community Health Centres, Royal Flying Doctor Service and other Commonwealth vaccination facilities

#Primary care site numbers are based on the number of sites participating in the rollout as at 20 March 2023.

Source: Australian Immunisation Register

Aboriginal and Torres Strait Islander peoples

Number of people vaccinated

Data as at:
22 Mar 2023
Updated weekly

Australia's COVID-19
Vaccine Program



People (16+) with at least one dose

454,438 **85.5%**

People (16+) with at least two doses

437,120 **82.3%**



Eligible people (16+) with three doses

247,088 **56.6%**

Eligible people (30+) with four doses

67,321 **35.6%**



People (12-15) with at least one dose

44,399 **63.3%**

People (12-15) with at least two doses

37,838 **54.0%**

124 Aboriginal community controlled health services (ACCHS) sites

1	29	16	37	14	3	7	17
ACT	NSW	NT	QLD	SA	TAS	VIC	WA

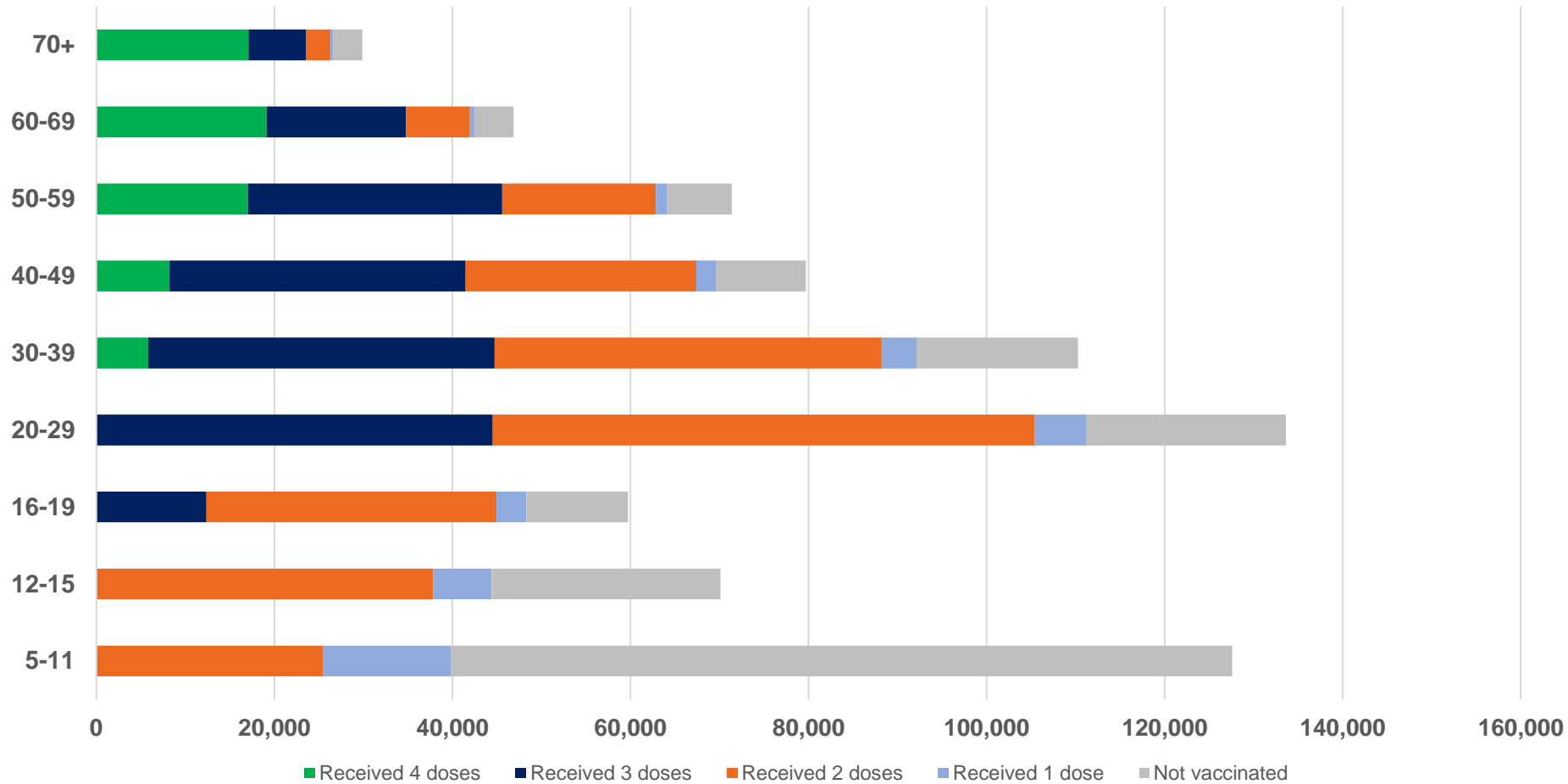
Residential State	Individuals Dose 1 % (16+)	Individuals Dose 2 % (16+)	Individuals Dose 3 % Eligible (aged 16+)	Individuals Dose 4 % Eligible (aged 30+)
ACT	92.3%	90.2%	65.7%	43.9%
NSW	87.8%	86.0%	53.3%	38.5%
NT	90.3%	86.3%	70.1%	26.7%
QLD	82.4%	78.8%	49.2%	38.0%
SA	81.4%	76.3%	61.1%	39.1%
TAS	89.2%	86.8%	60.2%	42.8%
VIC	90.9%	89.0%	62.6%	37.0%
WA	87.5%	82.2%	66.2%	30.4%
Unknown/Other Territories	72.6%	67.7%	51.5%	25.0%
National Coverage %	85.5%	82.3%	56.6%	35.6%
Number with a Dose	454,438	437,120	247,088	67,321
Total / Eligible Population	531,412	531,412	436,776	189,235

Identifying as Aboriginal and Torres Strait Islander is optional and the estimated population may be under reported. Numbers include all Aboriginal and Torres Strait Islander peoples who have received a vaccination, and are not limited to those administered in an ACCHS setting. The total population refers to the number of individuals that identify as Aboriginal and Torres Strait Islander in the Australian Immunisation Register, while the eligible population refers to the number of these individuals who meet the criteria for a further dose (based on completion of previous doses, age, and time period elapsed since last dose). Please note there may be people under 30 who are eligible, but these are not included in coverage rates or population to protect privacy.

Aboriginal and Torres Strait Islander peoples

Number of people vaccinated by age

Data as at:
22 Mar 2023
Updated weekly



Source: Australian Immunisation Register

Individuals with Culturally and Linguistically Diverse (CALD) backgrounds data

Data as at:
13 March 2023
Updated weekly

Australia's COVID-19
Vaccine Program

People over the age of 16

CALD population *	Total number of individuals in cohort	% People with at least one dose	% People who received two doses	% of eligible people who received three or more doses
General population	20,629,070	>95.0%	>95.0%	72.4%
People born overseas	4,113,637	94.2%	93.7%	73.8%
Speaks a language other than English at home	3,815,225	93.7%	93.1%	69.6%

	General population			Born Overseas			Speaks a language other than English at home		
	% with at least one dose	% who received two doses	% of eligible people who received three or more doses	% with at least one dose	% who received two doses	% of eligible people who received three or more doses	% with at least one dose	% who received two doses	% of eligible people who received three or more doses
ACT	>95.0%	>95.0%	80.8%	>95.0%	94.9%	79.7%	94.9%	94.4%	76.9%
NSW	>95.0%	>95.0%	70.5%	94.6%	94.1%	71.3%	93.8%	93.2%	66.5%
NT	88.6%	86.6%	79.5%	94.4%	94.0%	88.3%	93.2%	92.7%	86.8%
Qld	93.6%	92.2%	65.5%	91.8%	91.2%	68.6%	92.1%	91.3%	65.1%
SA	93.8%	92.0%	76.2%	92.4%	91.6%	76.1%	91.3%	90.3%	72.2%
Tas	>95.0%	93.7%	74.7%	92.3%	91.8%	77.4%	91.9%	91.3%	73.5%
Vic	>95.0%	>95.0%	74.5%	>95.0%	94.5%	74.0%	94.4%	93.9%	69.9%
WA	>95.0%	>95.0%	83.3%	94.8%	94.3%	85.7%	94.9%	94.3%	83.6%

*Individuals with Culturally and Linguistically Diverse (CALD) backgrounds are as reported in the 2021 Census, excluding those who have since departed Australia; deceased persons; those born in the UK, Ireland or NZ; and Aboriginal and/or Torres Strait Islander peoples. There is overlap across CALD cohorts where individuals may have reported they had more than one CALD characteristic in the 2021 Census.

Small negative changes may appear when compared with the previous report due to perturbation, data maturity and changes in population sizes.


Source: Australian Immunisation Register linked to the Multi-Agency Data Integration Project (Census 2021 characteristics). Coverage rates for the general population are as published for 15 March 2023.

Data as at:
09 March 2023#
Updated weekly

Residential aged care vaccination rollout



170,594
Aged care residents with at least one dose



169,339
Aged care residents with at least two doses



163,355
Aged care residents with at least three doses



135,527#
Aged care residents with at least four doses



>99%
Aged care workers with at least two doses nationally

Aged care resident vaccinations

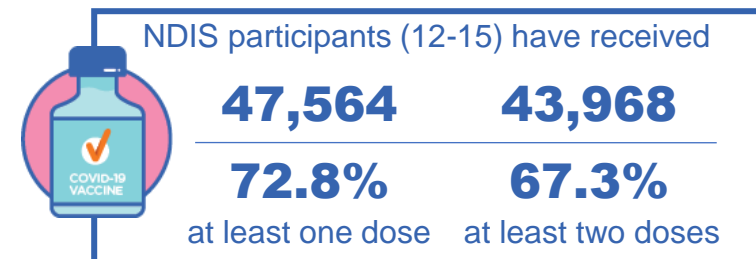
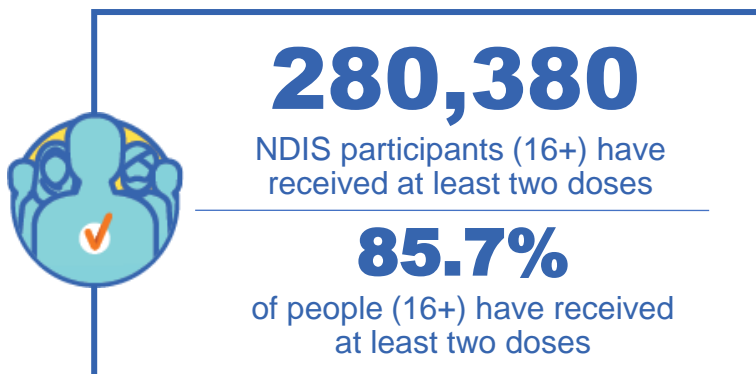
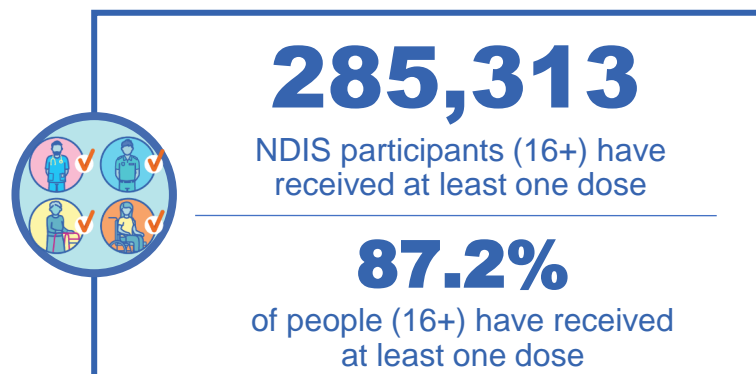
	Aged care residents with at least one dose	Aged care residents with at least two doses	Aged care residents with at least three doses	Aged care residents with at least four doses [#]
NSW	97.0%	96.3%	92.8%	75.7%
VIC	96.9%	96.4%	93.6%	80.9%
QLD	95.1%	94.4%	90.6%	74.0%
SA	96.0%	94.9%	91.3%	75.4%
WA	96.9%	96.1%	92.3%	74.7%
TAS	96.0%	95.1%	92.3%	77.9%
NT	96.9%	95.1%	90.7%	73.3%
ACT	98.0%	97.5%	95.1%	83.4%
National	96.5%	95.8%	92.4%	76.7%

[#]Aged Care Residents fourth dose data as at 02 March 2023 with the 'Winter dose' program from 2022 finalised. Reporting for the new booster program is being finalised and will be available soon.
Source: Residential aged care provider self-reported COVID-19 vaccination information and matched AIR data of residents in permanent residential RACFs.

National Disability Insurance Scheme (NDIS) reported vaccinations

Data as at:
19 Mar 2023
Updated weekly

Australia's COVID-19
Vaccine Program



NDIS participant vaccinations

	% People aged 16+ with at least one dose	% People aged 16+ with at least two doses	% People aged 16+ with three doses	% People aged 16+ with four doses
ACT	89.9%	88.8%	82.9%	39.5%
NSW	87.7%	86.3%	74.4%	35.4%
NT	78.6%	76.3%	78.7%	27.7%
QLD	85.1%	83.5%	70.4%	29.5%
SA	85.1%	83.2%	77.2%	31.2%
TAS	87.6%	85.7%	75.9%	32.5%
VIC	88.4%	87.0%	76.6%	33.2%
WA	88.6%	86.9%	81.2%	33.6%
National	87.2%	85.7%	75.3%	33.0%

Source: Linkage between National Disability Insurance Agency data and the Australian Immunisation Register. 'Total' NDIS Participant number last obtained as at 06 March 2023. Australian Immunisation Register data as at 19 March 2023. Includes all participants regardless of residence type.

Explanatory Notes

The Australian Immunisation Register (AIR). The Australian Immunisation Register is a national register that records all vaccines given to all people in Australia.

People received at least x dose/s. The count of unique people who have received at least x dose/s of a COVID-19 vaccine. People with at least x dose/s encompasses people who received x dose/s or more. Please note, to capture a person's current level of protection, this methodology includes any doses an individual received overseas where they have been uploaded into the Australian Immunisation Register, and where the vaccine brand is recognised by the TGA. Some people may not be included in this count where they are viewed as no longer in scope of the vaccination rollout (for example, where a person has permanently left Australia, or they have passed away).

Coverage calculations. First and second dose rates are calculated by taking the number of unique people who have received the corresponding dose from the Australian Immunisation Register and dividing this by the Australian Bureau of Statistics Estimated Residential Population (2021). For doses that are third in sequence or above, the coverage rates often refer to the *eligible* population – that is, the number of people with the dose over the number of people who meet the criteria for that dose in the Australian Immunisation Register. Vaccine coverage uses the state of residence (based on a person's Medicare address).

Eligible population. Eligible population refers to the number of these individuals who meet the criteria for a given dose based on completion of previous doses, age, and time period elapsed since last dose. Please note that the Australian Immunisation Register cannot identify immunocompromised individuals.

Vaccine doses administered. The total number of COVID-19 doses administered refers to the number of doses administered rather than the number of people who have received a COVID-19 vaccine. In most cases (unless otherwise specified) all doses are included (regardless of age of recipient or the dose number), and when these numbers are provided by state, it is typically the state that the dose was physically administered in as opposed to the state where the person resides on a usual basis.

Aboriginal and Torres Strait Islander Peoples. The Aboriginal and Torres Strait Islander population refers to the number of individuals that identify as Aboriginal and Torres Strait Islander in the Australian Immunisation Register. Identifying as Aboriginal and Torres Strait Islander is optional, and the estimated population may be under reported. Numbers include all Aboriginal and Torres Strait Islander peoples who have received a vaccination and are not limited to those administered in an ACCHS setting.

Update Information: Vaccine data is sourced from the Australian Immunisation Register as at 11:59pm 22 March 2023 unless otherwise noted.