



Australian Government

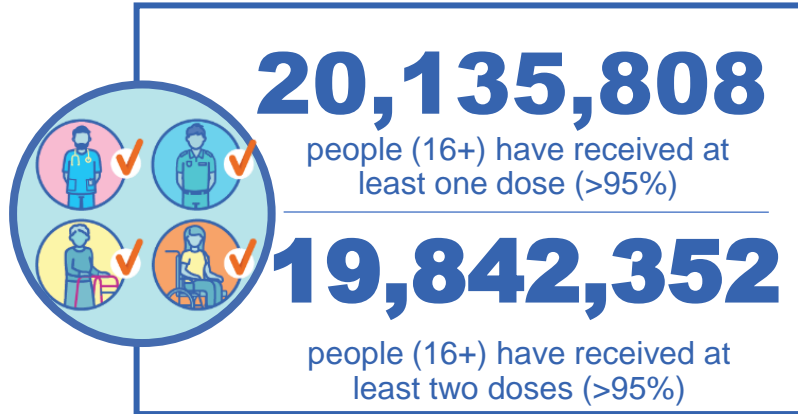
Department of Health and Aged Care

COVID-19 Vaccine Roll-out

16 March 2023

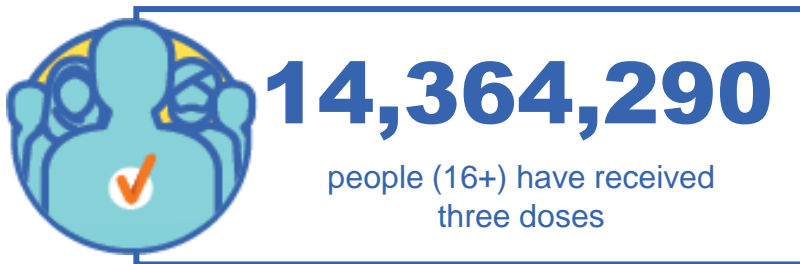
Data as at:
15 Mar 2023
Updated weekly

Total vaccine doses



65,300,492 total vaccine doses administered

+154,757 weekly increase

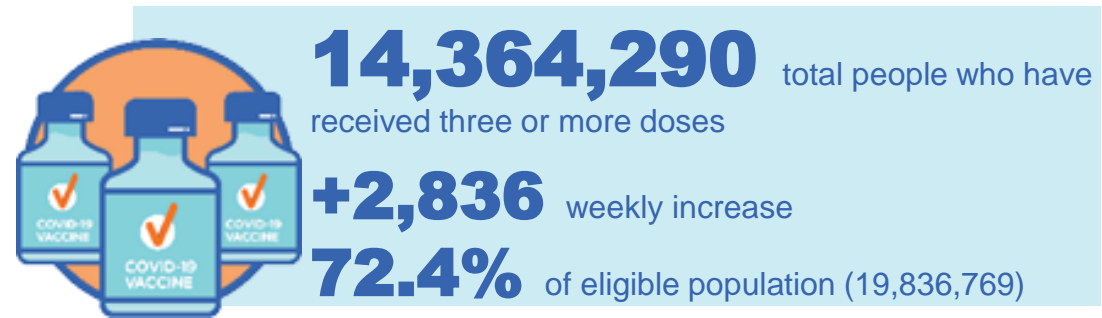
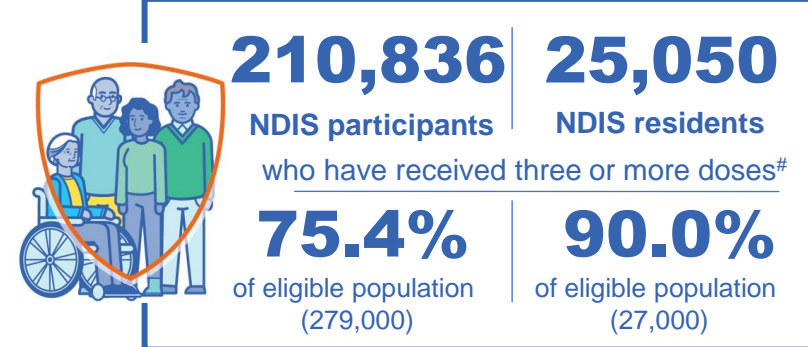
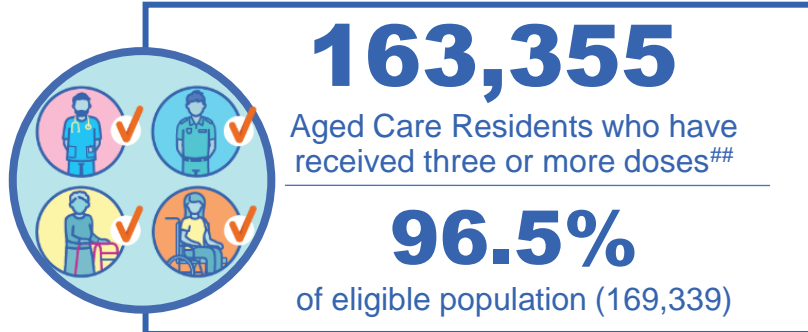
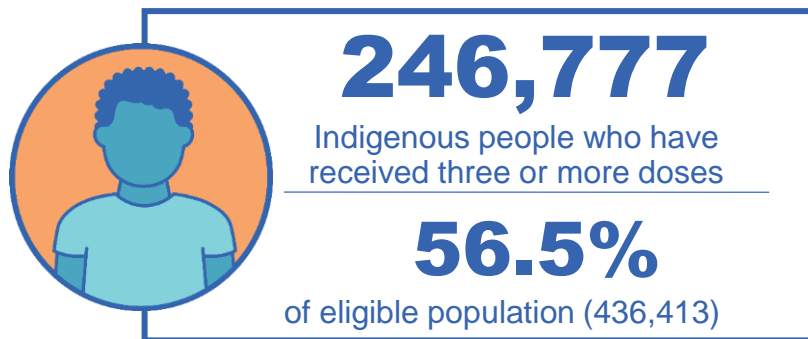


*Administration state breakdown indicates state in which a vaccine was administered

Source: Australian Immunisation Register

Third Doses

Data as at:
15 Mar 2023##
Updated weekly



	Number of People	Weekly Increase	% of Eligible
ACT	282,006	43	80.8%
NSW	4,402,325	1,118	70.5%
NT	132,958	25	79.5%
QLD	2,510,221	1,205	65.5%
SA	1,030,656	181	76.2%
TAS	325,673	45	74.7%
VIC	3,815,297	888	74.5%
WA	1,738,005	462	83.3%

127,149 doses administered to persons residing in other territories or with missing residential information


*People may belong to multiple groups and could be represented in the above breakdowns multiple times.
#NDIS participants data as at 12 March 2023. ##Aged Care Residents data as at 09 March 2023.

Source: Australian Immunisation Register

Fourth Doses

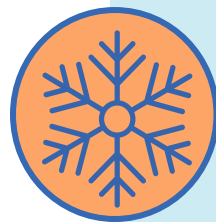
Data as at:
15 Mar 2023#
Updated weekly

Australia's COVID-19
Vaccine Program



135,527
Aged Care Residents who have received four or more doses#

85.2%
of eligible population (158,993)



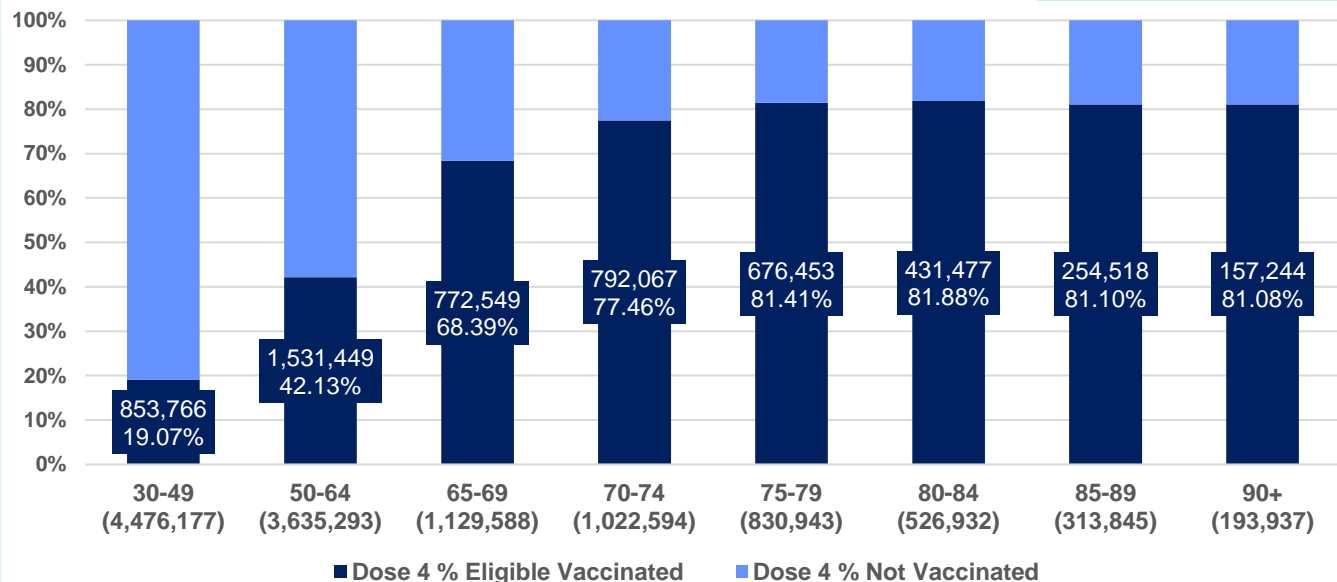
5,529,442
+17,425
45.1%
3,084,308
76.8%

total people (16+) who have received four doses
weekly increase (16+)

of eligible population (30+) (12,129,309)

total people (65+) who have received four doses
of eligible population (65+) (4,017,839)

% Individuals eligible vaccinated by current age



	Number of People 16+	Weekly Increase
ACT	123,505	569
NSW	1,764,008	6,140
NT	30,196	116
QLD	1,047,058	3,020
SA	431,605	1,156
TAS	147,398	433
VIC	1,383,959	4,654
WA	570,908	1,544

30,805 doses administered to persons residing in other territories or with missing residential information

*People become eligible for a fourth dose three months after their third dose. Individuals may belong to multiple groups and could be represented in the above multiple times.

#Aged Care Residents data as at 02 March 2023.

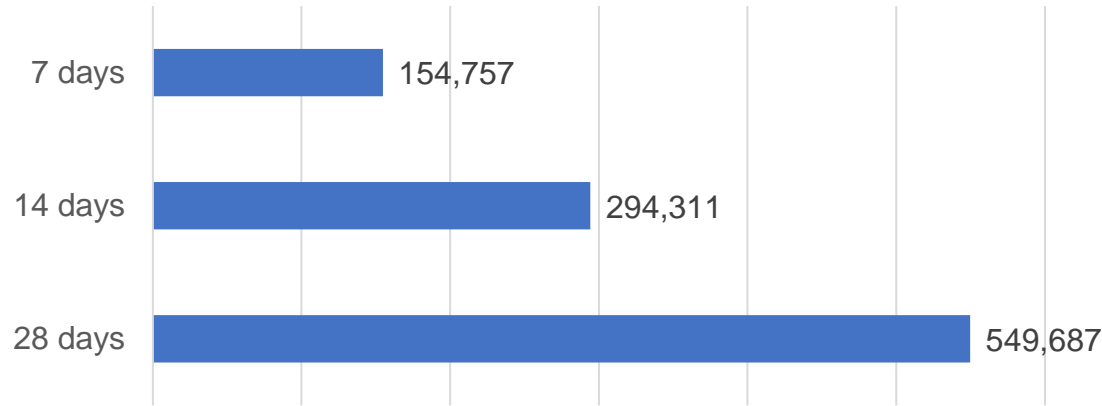
Please note, that as of 20th February 2023, ATAGI announced the expansion of fourth dose eligibility. Our external reports do not currently capture the increased eligibility, but will be updated shortly to align with the latest ATAGI advice.

Source: Australian Immunisation Register

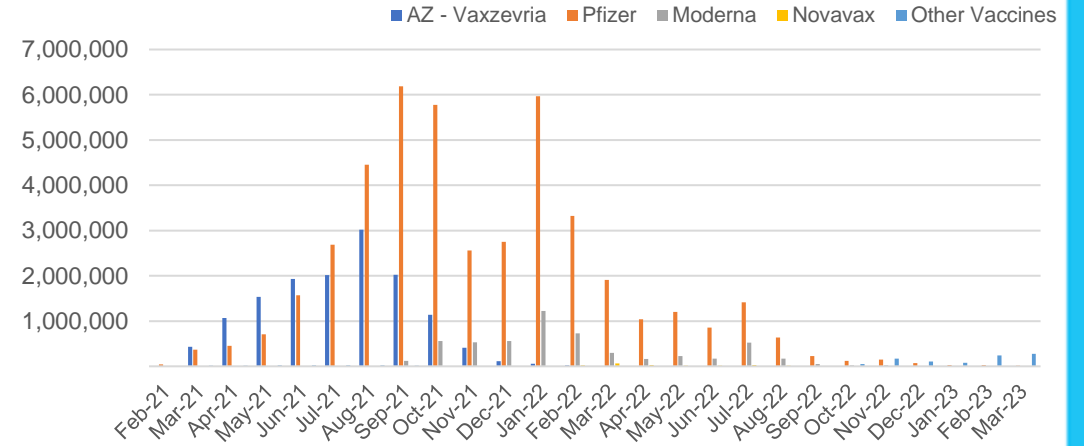
Vaccine milestone charts

Data as at:
15 Mar 2023
Updated weekly

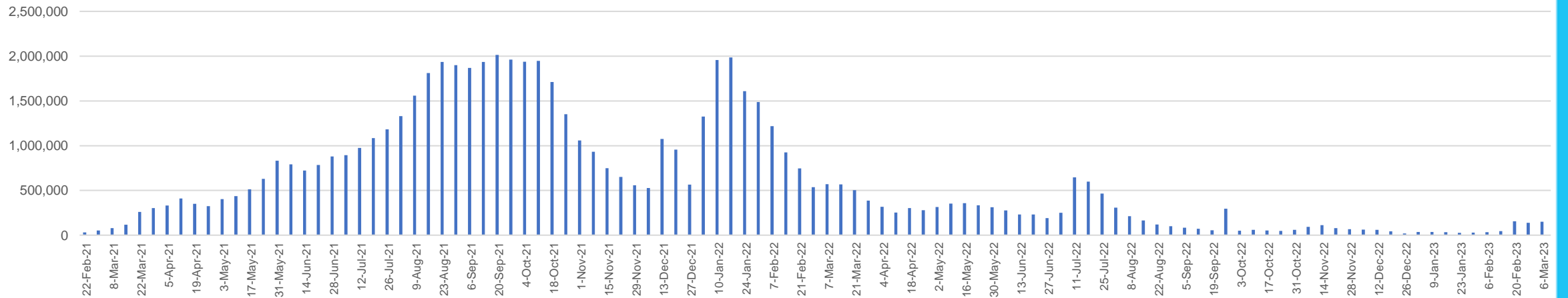
Doses Reported



Doses by administration month and vaccine type



Doses Administered by Week



*Sourced from the Australian Immunisation Register.

Data as at:
15 Mar 2023
Updated weekly

Doses by age and jurisdiction

	AUS	ACT	NSW	NT	QLD	SA	TAS	VIC	WA
5 to 11 - dose 1	1,093,820	29,571	328,486	11,386	188,198	76,361	25,757	298,073	127,143
5 to 11 - dose 2	873,616	26,408	271,125	8,188	145,064	61,490	21,544	237,150	97,889
5 to 11 - population	2,269,663	40,719	711,525	25,120	476,567	149,048	45,549	568,488	252,235
5 to 11 % with dose 1	48.19%	72.62%	46.17%	45.33%	39.49%	51.23%	56.55%	52.43%	50.41%
5 to 11 % with dose 2	38.49%	64.85%	38.10%	32.60%	30.44%	41.26%	47.30%	41.72%	38.81%
12 to 15 - dose 1	1,003,206	20,019	307,340	10,060	194,742	65,704	21,922	261,953	111,619
12 to 15 - dose 2	933,621	19,347	289,987	8,893	178,569	61,121	20,507	245,949	101,334
12 to 15 - population	1,279,387	20,888	399,352	13,190	278,225	85,541	27,469	313,711	140,783
12 to 15 % with dose 1	78.41%	95.84%	76.96%	76.27%	69.99%	76.81%	79.81%	83.50%	79.28%
12 to 15 % with dose 2	72.97%	92.62%	72.61%	67.42%	64.18%	71.45%	74.66%	78.40%	71.98%
16 and over - dose 1	20,135,808	354,160	6,328,323	171,166	3,894,685	1,379,909	443,971	5,189,529	2,113,312
16 and over - dose 2	19,842,352	348,984	6,242,435	167,256	3,836,590	1,353,988	436,253	5,124,872	2,086,446
16 and over - dose 3	14,364,290	282,006	4,402,325	132,958	2,510,221	1,030,656	325,673	3,815,297	1,738,005
16 and over - population	20,629,070	364,811	6,504,442	193,211	4,161,009	1,471,062	465,436	5,279,175	2,185,967
16 and over % with dose 1	97.61%	97.08%	97.29%	88.59%	93.60%	93.80%	95.39%	98.30%	96.68%
16 and over % with dose 2	96.19%	95.66%	95.97%	86.57%	92.20%	92.04%	93.73%	97.08%	95.45%
16 and over % with dose 3	69.63%	77.30%	67.68%	68.81%	60.33%	70.06%	69.97%	72.27%	79.51%
30 and over - dose 1	15,762,428	274,626	4,979,884	127,114	3,045,283	1,097,343	353,283	4,055,358	1,656,247
30 and over - dose 2	15,567,829	271,084	4,921,031	124,894	3,008,669	1,081,487	348,428	4,010,377	1,638,856
30 and over - dose 3	12,168,093	231,781	3,758,918	105,145	2,183,489	882,056	282,160	3,192,964	1,436,943
30 and over - dose 4	5,469,523	121,279	1,743,790	29,522	1,038,241	428,228	146,101	1,366,565	565,661
30 and over - population	16,012,407	268,806	5,065,001	140,954	3,219,394	1,157,853	368,927	4,079,079	1,709,089
30 and over % with dose 1	98.44%	>99%	98.32%	90.18%	94.59%	94.77%	95.76%	>99%	96.91%
30 and over % with dose 2	97.22%	>99%	97.16%	88.61%	93.45%	93.40%	94.44%	98.32%	95.89%
30 and over % with dose 3	75.99%	86.23%	74.21%	74.60%	67.82%	76.18%	76.48%	78.28%	84.08%
30 and over % with dose 4	34.16%	45.12%	34.43%	20.94%	32.25%	36.98%	39.60%	33.50%	33.10%
65 and over - dose 1	4,410,508	64,997	1,426,036	20,642	858,273	351,714	115,390	1,101,577	434,276
65 and over - dose 2	4,371,026	64,193	1,413,262	20,380	851,896	349,030	114,691	1,091,017	431,219
65 and over - dose 3	4,022,154	60,918	1,288,248	18,573	783,092	327,455	108,347	996,302	409,627
65 and over - dose 4	3,084,308	51,840	982,829	12,172	612,324	259,864	87,862	746,017	312,207
65 and over - population	4,313,779	60,463	1,393,416	21,593	864,448	352,458	116,037	1,072,562	431,884
65 and over % with dose 1	>99%	>99%	>99%	95.60%	>99%	>99%	>99%	>99%	>99%
65 and over % with dose 2	>99%	>99%	>99%	94.38%	98.55%	>99%	98.84%	>99%	>99%
65 and over % with dose 3	93.24%	>99%	92.45%	86.01%	90.59%	92.91%	93.37%	92.89%	94.85%
65 and over % with dose 4	71.50%	85.74%	70.53%	56.37%	70.83%	73.73%	75.72%	69.55%	72.29%

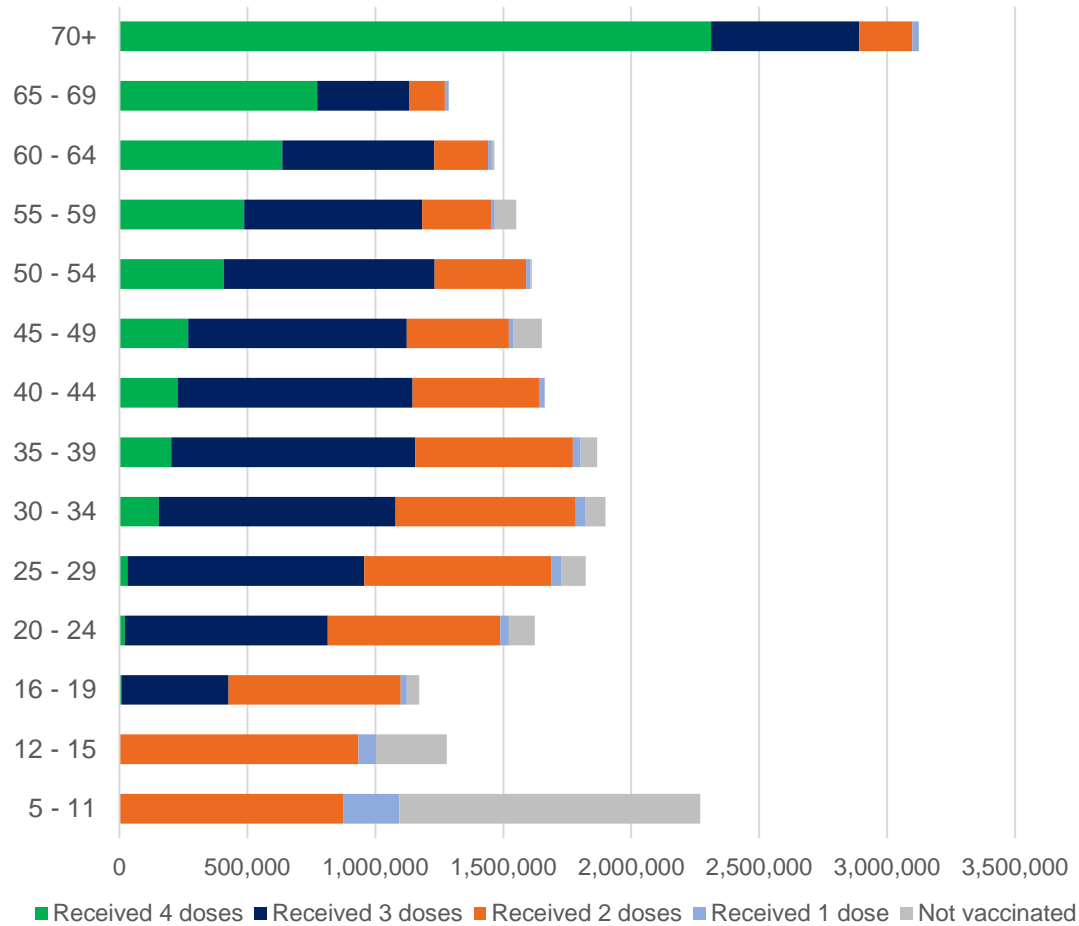
*National population will not equal sum of listed jurisdictions due to a small number of people counted in national population residing in some 'other' territories. Sum of state doses will not add to national total as some records are unable to be geocoded to a State or Territory.

Doses sourced from Australian Immunisation Register, population from ABS ERP June 2021

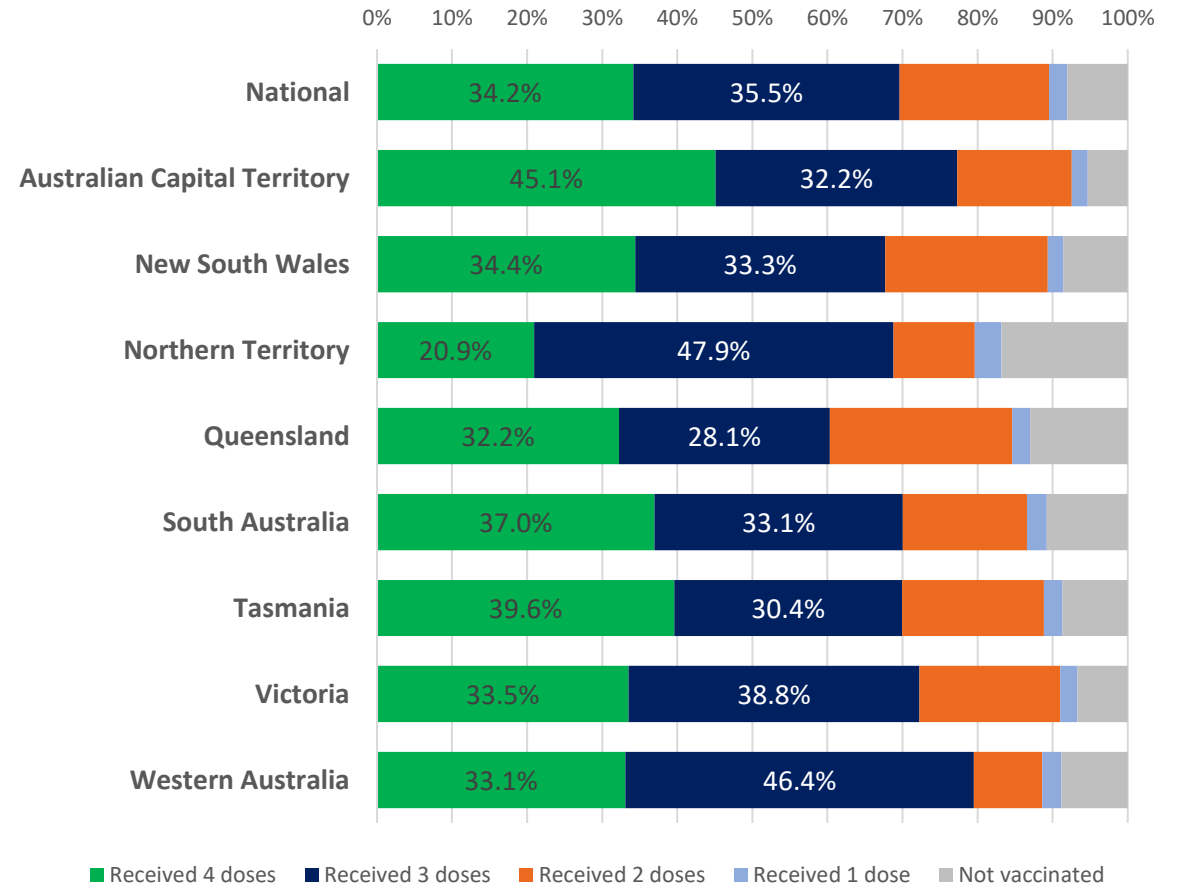
Data as at:
15 Mar 2023
Updated weekly

Vaccinations by age and location

Number of people vaccinated by age

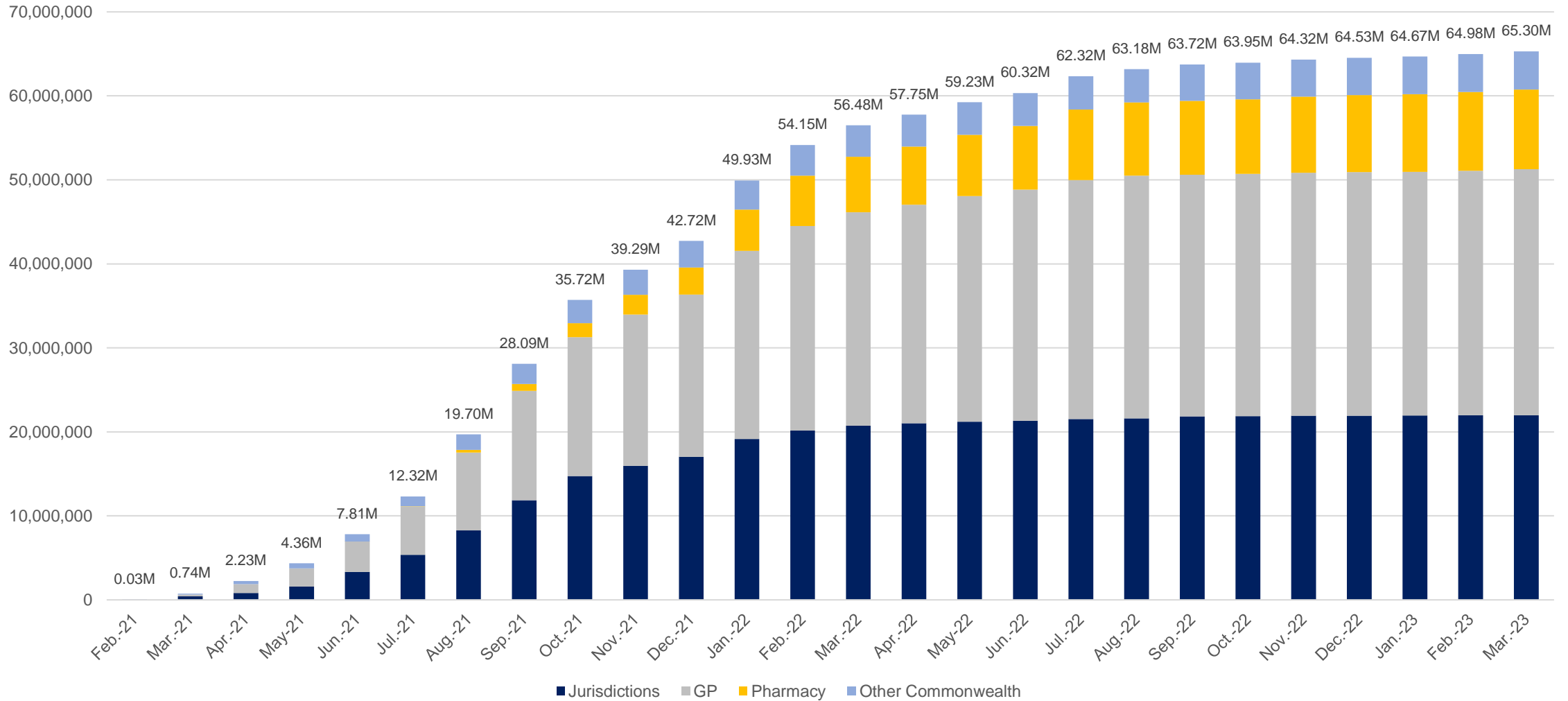


Individuals vaccinated by residential location



Data as at:
15 Mar 2023
Updated weekly

Cumulative doses administered by channel



Source: Australian Immunisation Register

Data as at:
15 Mar 2023
Updated weekly

Commonwealth primary care



Primary care vaccine administration sites*

4,493

GPs

176

ACCHS

3,043

Pharmacies



41,969,049 total vaccine doses administered
in primary care settings

+149,373 weekly increase

Primary care vaccinations by provider type

	Doses administered	Weekly increase
General Practice*	32,382,166	83,848
Pharmacy	9,586,883	65,525

NSW
14,402,449
(+51,797 weekly increase)

VIC
10,398,523
(+35,061 weekly increase)

QLD
8,127,754
(+30,725 weekly increase)

WA
4,329,441
(+12,732 weekly increase)

TAS
818,724
(+4,253 weekly increase)

SA
2,586,371
(+13,018 weekly increase)

ACT
704,569
(+3,900 weekly increase)

NT
241,534
(+623 weekly increase)

359,684

doses administered to persons residing in other territories or with missing residential information

*General practice includes Aboriginal Community Health Centres, Royal Flying Doctor Service and other Commonwealth vaccination facilities

#Primary care site numbers are based on the number of sites participating in the rollout as at 13 March 2023.

Source: Australian Immunisation Register

Aboriginal and Torres Strait Islander peoples

Number of people vaccinated

Data as at:
15 Mar 2023
Updated weekly

Australia's COVID-19
Vaccine Program



People (16+) with at least one dose

454,069 **85.5%**

People (16+) with at least two doses

436,770 **82.3%**



Eligible people (16+) with three doses

246,777 **56.5%**

Eligible people (30+) with four doses

66,982 **35.5%**



People (12-15) with at least one dose

44,526 **63.5%**

People (12-15) with at least two doses

37,994 **54.2%**

123 Aboriginal community controlled health services (ACCHS) sites

1	28	15	37	14	3	7	18
ACT	NSW	NT	QLD	SA	TAS	VIC	WA

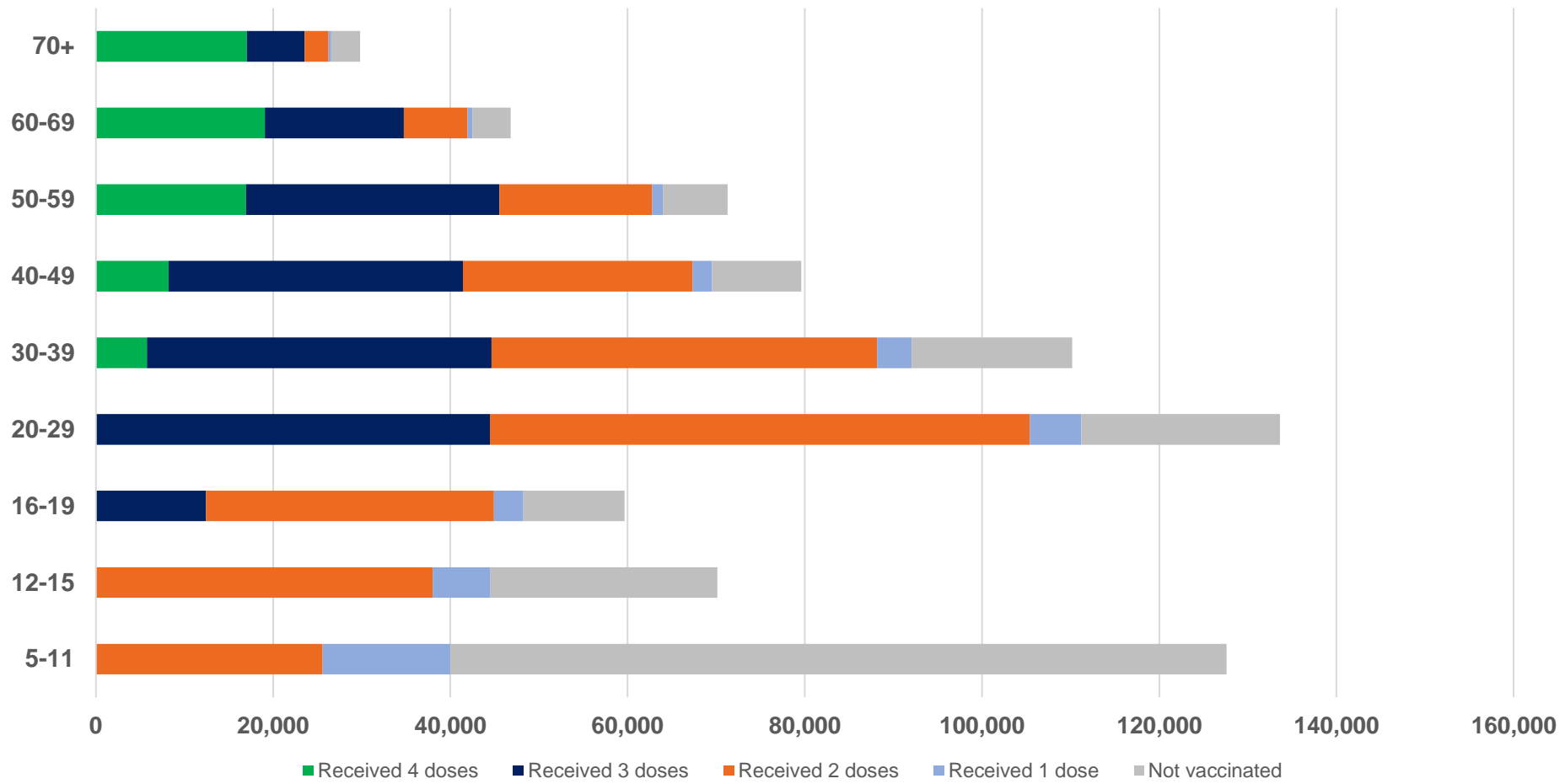
Residential State	Individuals Dose 1 % (16+)	Individuals Dose 2 % (16+)	Individuals Dose 3 % Eligible (aged 16+)	Individuals Dose 4 % Eligible (aged 30+)
ACT	92.3%	90.3%	65.8%	43.5%
NSW	87.8%	86.0%	53.3%	38.3%
NT	90.3%	86.3%	70.2%	26.7%
QLD	82.4%	78.8%	49.2%	37.9%
SA	81.4%	76.2%	61.0%	38.9%
TAS	89.2%	86.8%	60.2%	42.6%
VIC	90.9%	89.0%	62.6%	36.9%
WA	87.5%	82.2%	66.3%	30.3%
Unknown/Other Territories	72.6%	67.7%	51.5%	24.9%
National Coverage %	85.5%	82.3%	56.5%	35.5%
Number with a Dose	454,069	436,770	246,777	66,982
Total / Eligible Population	530,971	530,971	436,413	188,926

Identifying as Aboriginal and Torres Strait Islander is optional and the estimated population may be under reported. Numbers include all Aboriginal and Torres Strait Islander peoples who have received a vaccination, and are not limited to those administered in an ACCHS setting. The total population refers to the number of individuals that identify as Aboriginal and Torres Strait Islander in the Australian Immunisation Register, while the eligible population refers to the number of these individuals who meet the criteria for a further dose (based on completion of previous doses, age, and time period elapsed since last dose). Please note there may be people under 30 who are eligible, but these are not included in coverage rates or population to protect privacy.

Aboriginal and Torres Strait Islander peoples

Number of people vaccinated by age

Data as at:
15 Mar 2023
Updated weekly



Source: Australian Immunisation Register

Individuals with Culturally and Linguistically Diverse (CALD) backgrounds data

Data as at:
5 March 2023
Updated weekly

Australia's COVID-19
Vaccine Program

People over the age of 16

CALD population *	Total number of individuals in cohort	% People with at least one dose	% People who received two doses	% of eligible people who received three or more doses
General population	20,629,070	>95.0%	>95.0%	72.4%
People born overseas	4,113,637	94.2%	93.7%	73.6%
Speaks a language other than English at home	3,815,225	93.8%	93.1%	69.3%

	General population			Born Overseas			Speaks a language other than English at home		
	% with at least one dose	% who received two doses	% of eligible people who received three or more doses	% with at least one dose	% who received two doses	% of eligible people who received three or more doses	% with at least one dose	% who received two doses	% of eligible people who received three or more doses
ACT	>95.0%	>95.0%	80.8%	>95.0%	>95.0%	79.5%	>95.0%	94.5%	76.6%
NSW	>95.0%	>95.0%	70.5%	94.6%	94.1%	71.1%	93.8%	93.2%	66.2%
NT	88.5%	86.5%	79.5%	94.5%	94.1%	88.2%	93.3%	92.9%	86.7%
Qld	93.6%	92.2%	65.5%	91.9%	91.2%	68.3%	92.1%	91.3%	64.7%
SA	93.8%	92.0%	76.2%	92.5%	91.6%	75.8%	91.4%	90.4%	71.9%
Tas	>95.0%	93.7%	74.7%	92.5%	92.0%	77.1%	92.1%	91.5%	73.1%
Vic	>95.0%	>95.0%	74.5%	>95.0%	94.5%	73.7%	94.4%	93.9%	69.6%
WA	>95.0%	>95.0%	83.3%	94.9%	94.3%	85.6%	94.9%	94.3%	83.5%

*Individuals with Culturally and Linguistically Diverse (CALD) backgrounds are as reported in the 2021 Census, excluding those who have since departed Australia; deceased persons; those born in the UK, Ireland or NZ; and Aboriginal and/or Torres Strait Islander peoples. There is overlap across CALD cohorts where individuals may have reported they had more than one CALD characteristic in the 2021 Census.

Small negative changes may appear when compared with the previous report due to perturbation, data maturity and changes in population sizes.


Source: Australian Immunisation Register linked to the Multi-Agency Data Integration Project (Census 2021 characteristics). Coverage rates for the general population are as published for 8 March 2023.

Data as at:
09 March 2023#
Updated weekly

Residential aged care vaccination rollout



170,594
Aged care residents with at least one dose



169,339
Aged care residents with at least two doses



163,355
Aged care residents with at least three doses



135,527#
Aged care residents with at least four doses



>99%
Aged care workers with at least two doses nationally

Aged care resident vaccinations

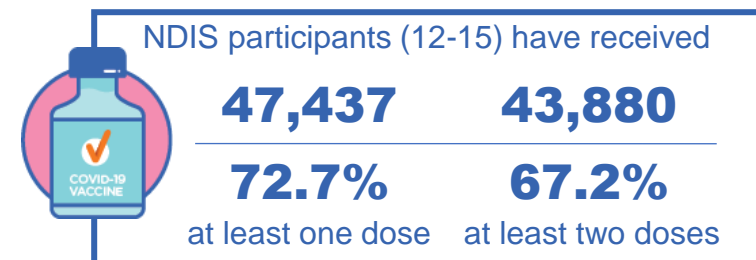
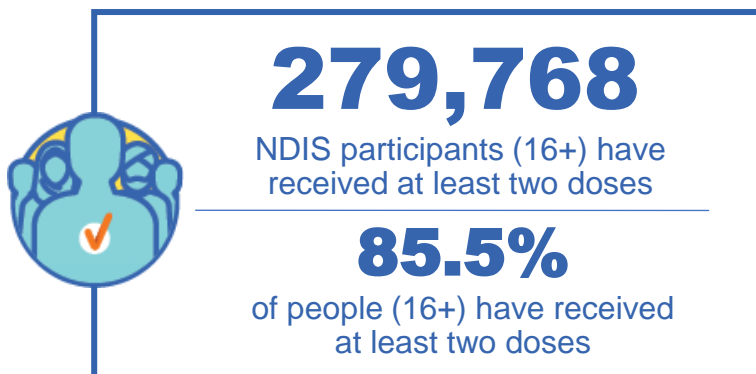
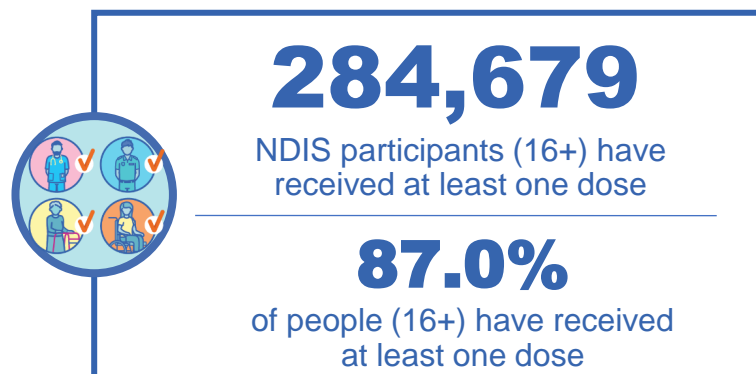
	Aged care residents with at least one dose	Aged care residents with at least two doses	Aged care residents with at least three doses	Aged care residents with at least four doses [#]
NSW	97.0%	96.3%	92.8%	75.7%
VIC	96.9%	96.4%	93.6%	80.9%
QLD	95.1%	94.4%	90.6%	74.0%
SA	96.0%	94.9%	91.3%	75.4%
WA	96.9%	96.1%	92.3%	74.7%
TAS	96.0%	95.1%	92.3%	77.9%
NT	96.9%	95.1%	90.7%	73.3%
ACT	98.0%	97.5%	95.1%	83.4%
National	96.5%	95.8%	92.4%	76.7%

[#]Aged Care Residents fourth dose data as at 02 March 2023 with the 'Winter dose' program from 2022 finalised. Reporting for the new booster program is being finalised and will be available soon.
Source: Residential aged care provider self-reported COVID-19 vaccination information and matched AIR data of residents in permanent residential RACFs.

National Disability Insurance Scheme (NDIS) reported vaccinations

Data as at:
12 Mar 2023
Updated weekly

Australia's COVID-19
Vaccine Program



NDIS participant vaccinations

	% People aged 16+ with at least one dose	% People aged 16+ with at least two doses	% People aged 16+ with three doses	% People aged 16+ with four doses
ACT	89.7%	88.6%	82.9%	39.3%
NSW	87.5%	86.2%	74.5%	35.3%
NT	78.5%	76.1%	78.8%	27.7%
QLD	84.9%	83.3%	70.5%	29.5%
SA	84.9%	83.0%	77.3%	31.2%
TAS	87.4%	85.6%	76.0%	32.5%
VIC	88.2%	86.8%	76.7%	33.1%
WA	88.4%	86.7%	81.2%	33.6%
National	87.0%	85.5%	75.4%	33.0%

Source: Linkage between National Disability Insurance Agency data and the Australian Immunisation Register. 'Total' NDIS Participant number last obtained as at 06 March 2023. Australian Immunisation Register data as at 12 March 2023. Includes all participants regardless of residence type.

Explanatory Notes

The Australian Immunisation Register (AIR). The Australian Immunisation Register is a national register that records all vaccines given to all people in Australia.

People received at least x dose/s. The count of unique people who have received at least x dose/s of a COVID-19 vaccine. People with at least x dose/s encompasses people who received x dose/s or more. Please note, to capture a person's current level of protection, this methodology includes any doses an individual received overseas where they have been uploaded into the Australian Immunisation Register, and where the vaccine brand is recognised by the TGA. Some people may not be included in this count where they are viewed as no longer in scope of the vaccination rollout (for example, where a person has permanently left Australia, or they have passed away).

Coverage calculations. First and second dose rates are calculated by taking the number of unique people who have received the corresponding dose from the Australian Immunisation Register and dividing this by the Australian Bureau of Statistics Estimated Residential Population (2021). For doses that are third in sequence or above, the coverage rates often refer to the *eligible* population – that is, the number of people with the dose over the number of people who meet the criteria for that dose in the Australian Immunisation Register. Vaccine coverage uses the state of residence (based on a person's Medicare address).

Eligible population. Eligible population refers to the number of these individuals who meet the criteria for a given dose based on completion of previous doses, age, and time period elapsed since last dose. Please note that the Australian Immunisation Register cannot identify immunocompromised individuals.

Vaccine doses administered. The total number of COVID-19 doses administered refers to the number of doses administered rather than the number of people who have received a COVID-19 vaccine. In most cases (unless otherwise specified) all doses are included (regardless of age of recipient or the dose number), and when these numbers are provided by state, it is typically the state that the dose was physically administered in as opposed to the state where the person resides on a usual basis.

Aboriginal and Torres Strait Islander Peoples. The Aboriginal and Torres Strait Islander population refers to the number of individuals that identify as Aboriginal and Torres Strait Islander in the Australian Immunisation Register. Identifying as Aboriginal and Torres Strait Islander is optional, and the estimated population may be under reported. Numbers include all Aboriginal and Torres Strait Islander peoples who have received a vaccination and are not limited to those administered in an ACCHS setting.

Update Information: Vaccine data is sourced from the Australian Immunisation Register as at 11:59pm 15 March 2023 unless otherwise noted.