



Australian Government

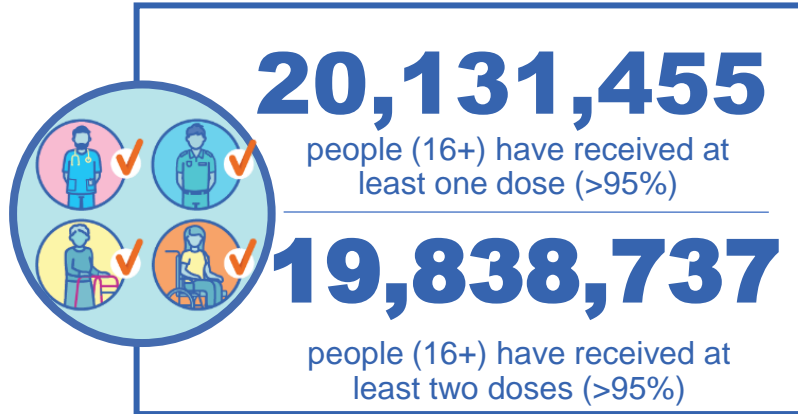
Department of Health and Aged Care

COVID-19 Vaccine Roll-out

09 March 2023

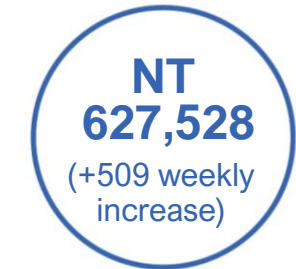
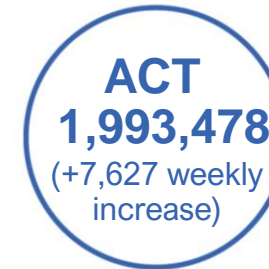
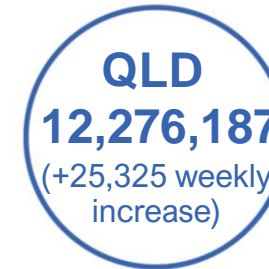
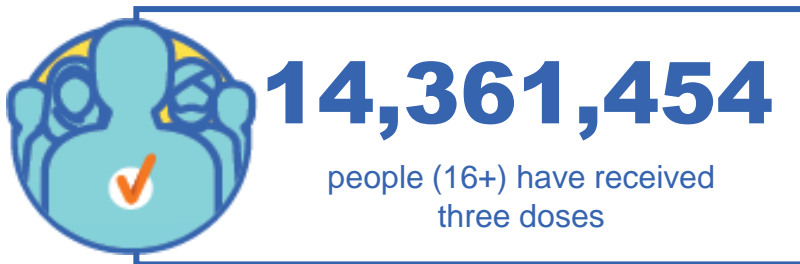
Data as at:
08 Mar 2023
Updated weekly

Total vaccine doses



65,145,735 total vaccine doses administered

+139,554 weekly increase



*Administration state breakdown indicates state in which a vaccine was administered.

The Department is finalising reporting arrangements for the new booster program, moving away from dose numbers and focussing on recency of coverage. Specific information on national and state/territory vaccination uptake for the 2023 COVID-19 booster dose will be available soon.

Source: Australian Immunisation Register

Third Doses

Data as at:
08 Mar 2023##
Updated weekly



246,590

Indigenous people who have received three or more doses

56.6%

of eligible population (436,065)



163,355

Aged Care Residents who have received three or more doses##

96.5%

of eligible population (169,339)



210,558

NDIS participants

who have received three or more doses#

75.4%

of eligible population (279,000)

24,956

NDIS residents

who have received three or more doses#

90.1%

of eligible population (27,000)



14,361,454 total people who have received three or more doses

+2,605 weekly increase

72.4% of eligible population (19,832,867)

	Number of People	Weekly Increase	% of Eligible
ACT	281,963	44	80.8%
NSW	4,401,207	758	70.5%
NT	132,933	19	79.5%
QLD	2,509,016	1,226	65.5%
SA	1,030,475	208	76.2%
TAS	325,628	<10	74.7%
VIC	3,814,409	1,088	74.5%
WA	1,737,543	466	83.3%

128,280

doses administered to persons residing in other territories or with missing residential information


*People may belong to multiple groups and could be represented in the above breakdowns multiple times.
#NDIS participants data as at 04 March 2023. ##Aged Care Residents data as at 09 March 2023.

Source: Australian Immunisation Register

Fourth Doses

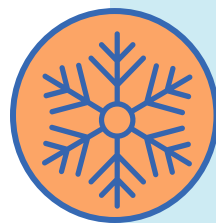
Data as at:
08 Mar 2023#
Updated weekly

Australia's COVID-19
Vaccine Program



135,527
Aged Care Residents who have received four or more doses#

85.2%
of eligible population (158,993)



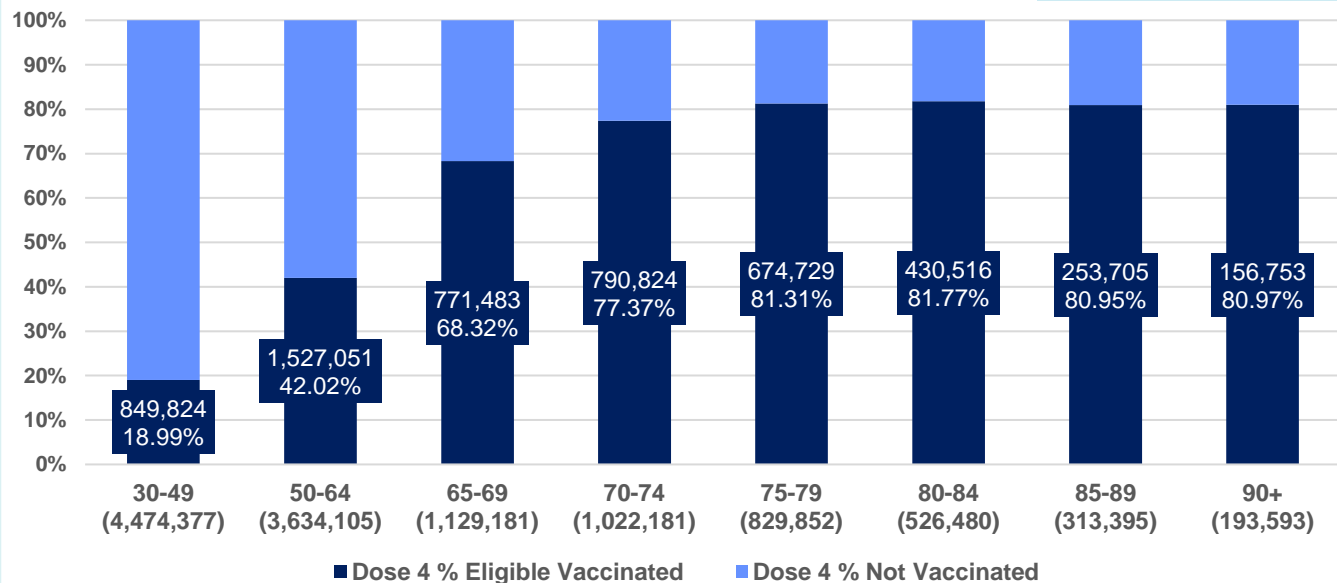
5,512,017
+15,527
45.0%
3,078,010
76.7%

total people (16+) who have received four doses
weekly increase (16+)

of eligible population (30+) (12,123,164)

total people (65+) who have received four doses
of eligible population (65+) (4,014,682)

% Individuals eligible vaccinated by current age



	Number of People 16+	Weekly Increase
ACT	122,936	527
NSW	1,757,868	5,000
NT	30,080	109
QLD	1,044,038	2,661
SA	430,449	1,161
TAS	146,965	446
VIC	1,379,305	4,734
WA	569,364	1,203

31,012

doses administered to persons residing in other territories or with missing residential information

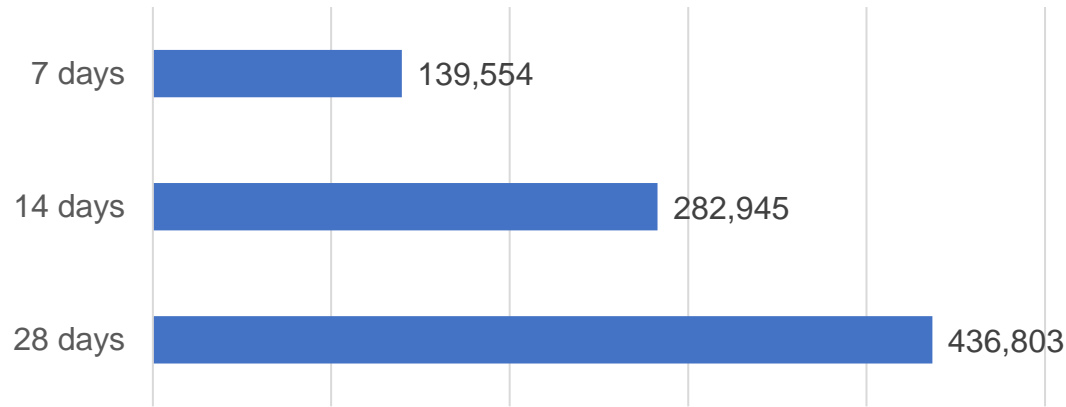
*People become eligible for a fourth dose three months after their third dose. Individuals may belong to multiple groups and could be represented in the above multiple times.
#Aged Care Residents fourth dose data as at 02 March 2023 with the 'Winter dose' program from 2022 finalised. Reporting for the new booster program is being finalised and will be available soon, as will general population reporting.

Source: Australian Immunisation Register

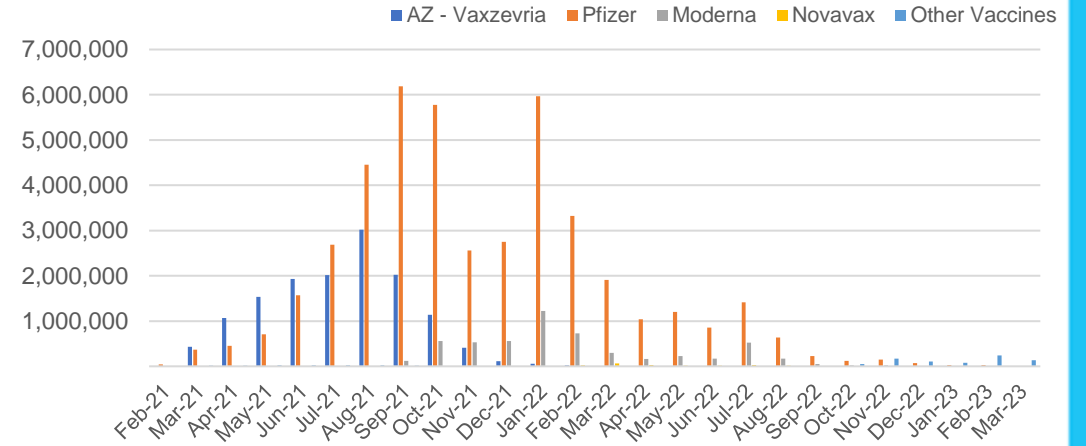
Vaccine milestone charts

Data as at:
08 Mar 2023
Updated weekly

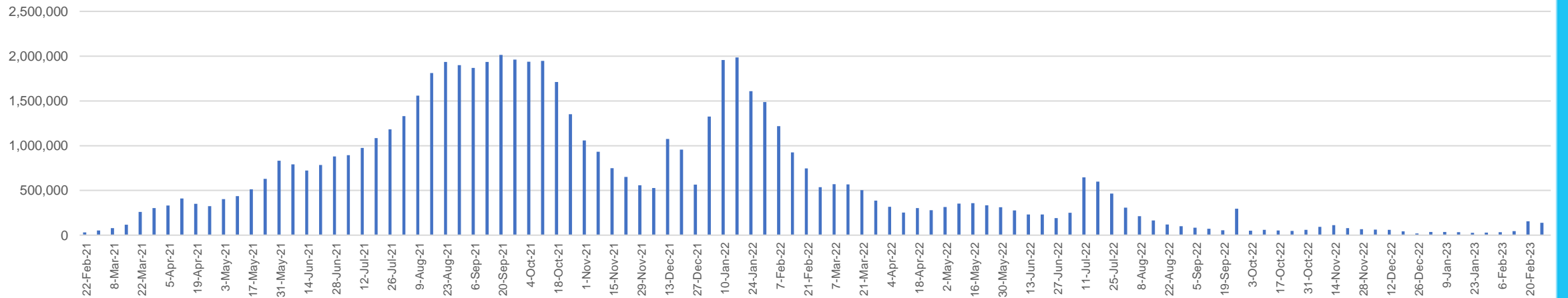
Doses Reported



Doses by administration month and vaccine type



Doses Administered by Week



*Sourced from the Australian Immunisation Register.

Data as at:
08 Mar 2023
Updated weekly

Doses by age and jurisdiction

	AUS	ACT	NSW	NT	QLD	SA	TAS	VIC	WA
5 to 11 - dose 1	1,097,453	29,686	329,521	11,426	188,862	76,605	25,849	298,972	127,539
5 to 11 - dose 2	876,150	26,484	271,802	8,221	145,526	61,672	21,617	237,805	98,182
5 to 11 - population	2,269,663	40,719	711,525	25,120	476,567	149,048	45,549	568,488	252,235
5 to 11 % with dose 1	48.35%	72.90%	46.31%	45.49%	39.63%	51.40%	56.75%	52.59%	50.56%
5 to 11 % with dose 2	38.60%	65.04%	38.20%	32.73%	30.54%	41.38%	47.46%	41.83%	38.92%
12 to 15 - dose 1	1,004,728	20,010	307,855	10,062	195,064	65,806	21,939	262,269	111,731
12 to 15 - dose 2	935,602	19,346	290,617	8,909	178,985	61,245	20,535	246,406	101,513
12 to 15 - population	1,279,387	20,888	399,352	13,190	278,225	85,541	27,469	313,711	140,783
12 to 15 % with dose 1	78.53%	95.80%	77.09%	76.29%	70.11%	76.93%	79.87%	83.60%	79.36%
12 to 15 % with dose 2	73.13%	92.62%	72.77%	67.54%	64.33%	71.60%	74.76%	78.55%	72.11%
16 and over - dose 1	20,131,455	354,069	6,327,145	171,082	3,892,730	1,379,502	443,897	5,187,978	2,112,201
16 and over - dose 2	19,838,737	348,900	6,241,498	167,186	3,834,738	1,353,662	436,189	5,123,579	2,085,416
16 and over - dose 3	14,361,454	281,963	4,401,207	132,933	2,509,016	1,030,475	325,628	3,814,409	1,737,543
16 and over - population	20,629,070	364,811	6,504,442	193,211	4,161,009	1,471,062	465,436	5,279,175	2,185,967
16 and over % with dose 1	97.59%	97.06%	97.27%	88.55%	93.55%	93.78%	95.37%	98.27%	96.63%
16 and over % with dose 2	96.17%	95.64%	95.96%	86.53%	92.16%	92.02%	93.72%	97.05%	95.40%
16 and over % with dose 3	69.62%	77.29%	67.66%	68.80%	60.30%	70.05%	69.96%	72.25%	79.49%
30 and over - dose 1	15,757,506	274,501	4,978,541	127,025	3,043,575	1,096,965	353,181	4,053,625	1,655,317
30 and over - dose 2	15,563,406	270,963	4,919,857	124,807	3,007,029	1,081,168	348,333	4,008,829	1,637,969
30 and over - dose 3	12,163,977	231,671	3,757,686	105,079	2,182,286	881,815	282,075	3,191,619	1,436,196
30 and over - dose 4	5,454,885	120,875	1,738,584	29,414	1,035,581	427,288	145,734	1,362,711	564,338
30 and over - population	16,012,407	268,806	5,065,001	140,954	3,219,394	1,157,853	368,927	4,079,079	1,709,089
30 and over % with dose 1	98.41%	>99%	98.29%	90.12%	94.54%	94.74%	95.73%	>99%	96.85%
30 and over % with dose 2	97.20%	>99%	97.13%	88.54%	93.40%	93.38%	94.42%	98.28%	95.84%
30 and over % with dose 3	75.97%	86.19%	74.19%	74.55%	67.79%	76.16%	76.46%	78.24%	84.03%
30 and over % with dose 4	34.07%	44.97%	34.33%	20.87%	32.17%	36.90%	39.50%	33.41%	33.02%
65 and over - dose 1	4,407,286	64,916	1,424,987	20,621	857,551	351,383	115,272	1,100,689	433,893
65 and over - dose 2	4,367,922	64,110	1,412,260	20,359	851,196	348,708	114,571	1,090,164	430,846
65 and over - dose 3	4,019,266	60,839	1,287,288	18,553	782,474	327,166	108,226	995,548	409,261
65 and over - dose 4	3,078,010	51,705	980,593	12,127	611,097	259,366	87,666	744,454	311,631
65 and over - population	4,313,779	60,463	1,393,416	21,593	864,448	352,458	116,037	1,072,562	431,884
65 and over % with dose 1	>99%	>99%	>99%	95.50%	>99%	>99%	>99%	>99%	>99%
65 and over % with dose 2	>99%	>99%	>99%	94.29%	98.47%	98.94%	98.74%	>99%	>99%
65 and over % with dose 3	93.17%	>99%	92.38%	85.92%	90.52%	92.82%	93.27%	92.82%	94.76%
65 and over % with dose 4	71.35%	85.52%	70.37%	56.16%	70.69%	73.59%	75.55%	69.41%	72.16%

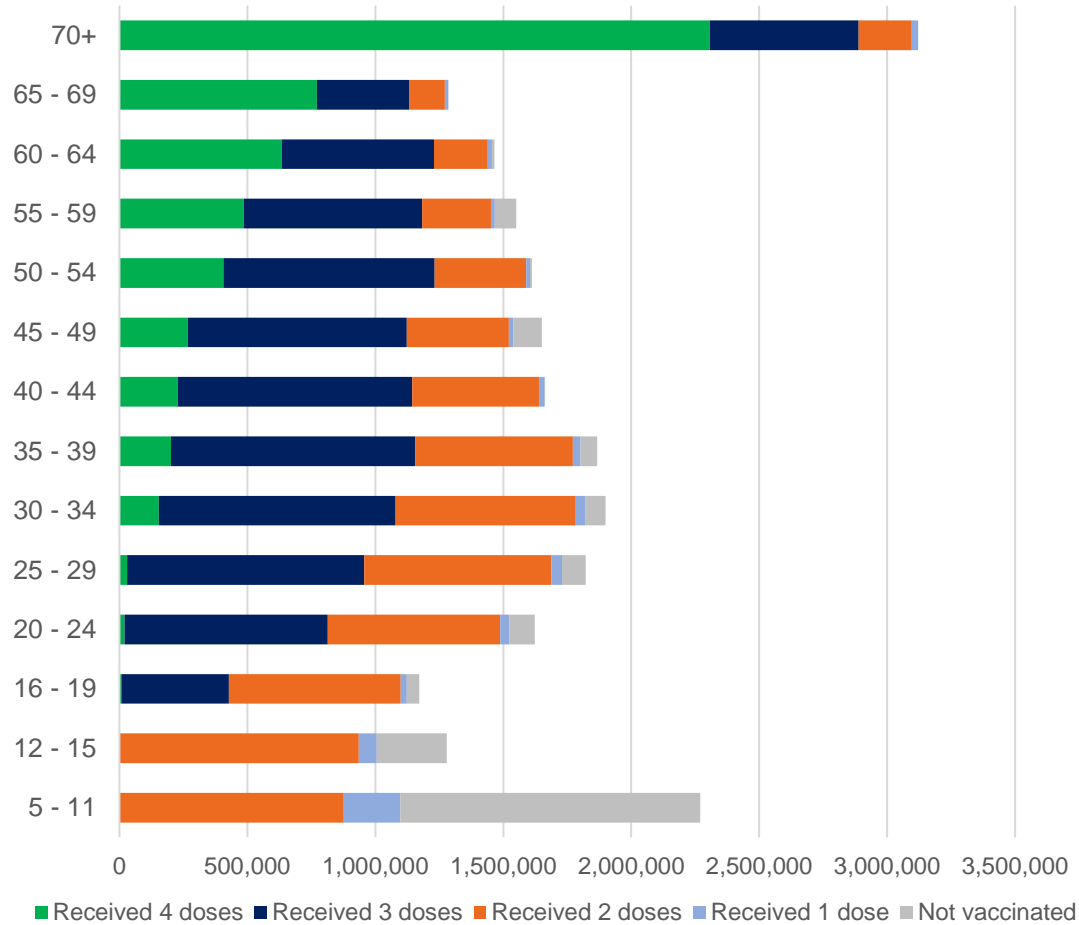
*National population will not equal sum of listed jurisdictions due to a small number of people counted in national population residing in some 'other' territories. Sum of state doses will not add to national total as some records are unable to be geocoded to a State or Territory.

Doses sourced from Australian Immunisation Register, population from ABS ERP June 2021

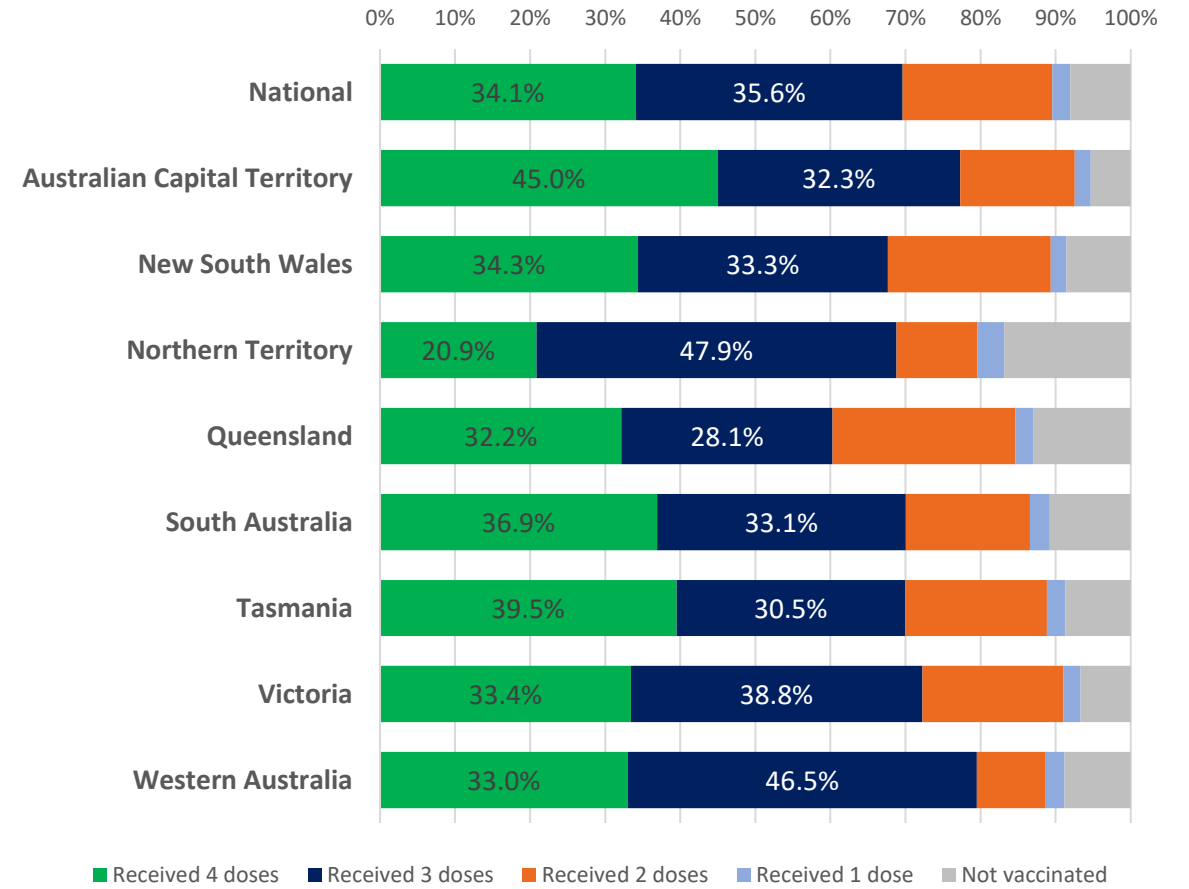
Vaccinations by age and location

Data as at:
08 Mar 2023
Updated weekly

Number of people vaccinated by age

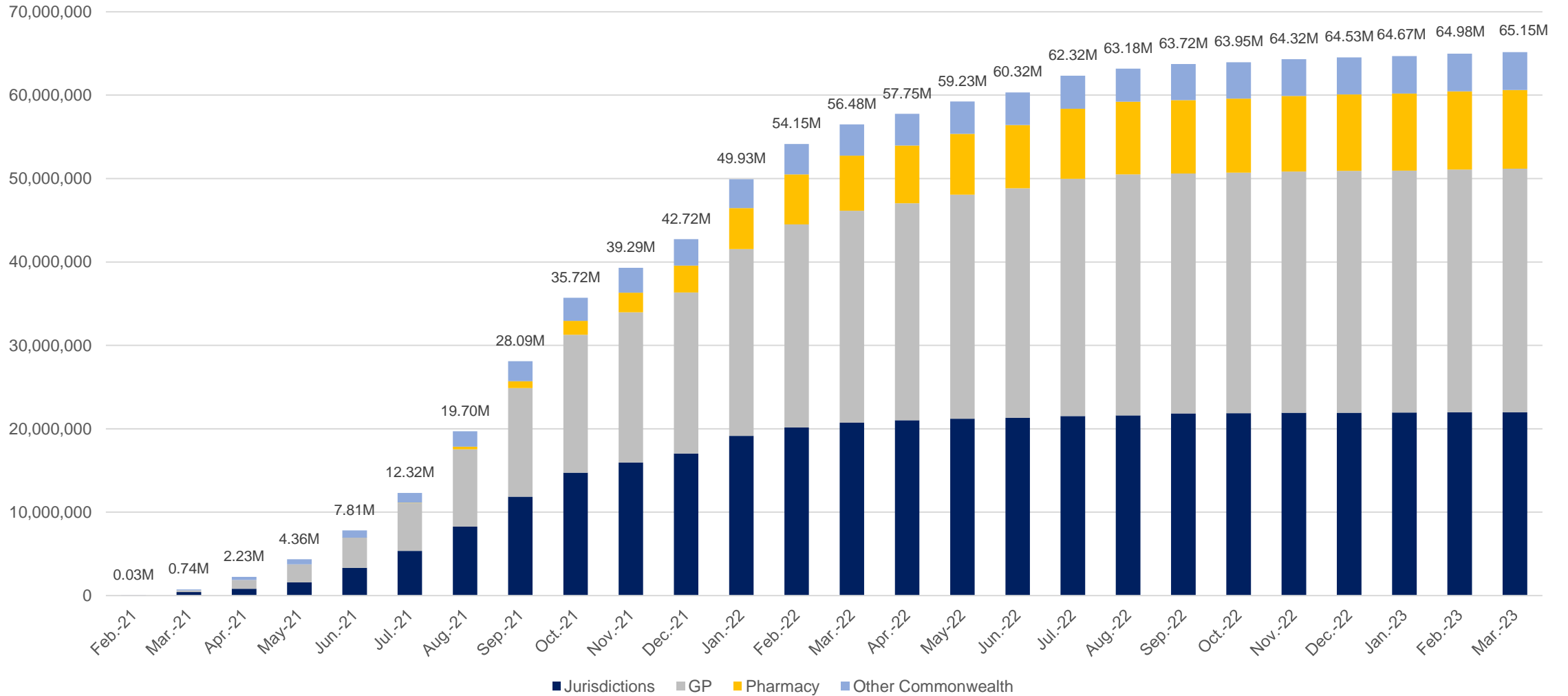


Individuals vaccinated by residential location



Data as at:
08 Mar 2023
Updated weekly

Cumulative doses administered by channel



Source: Australian Immunisation Register

Data as at:
08 Mar 2023
Updated weekly

Commonwealth primary care



Primary care vaccine administration sites#

4,519

GPs

176

ACCHS

3,018

Pharmacies



41,819,676 total vaccine doses administered
in primary care settings

+134,276 weekly increase

Primary care vaccinations by provider type

	Doses administered	Weekly increase
General Practice*	32,298,318	76,600
Pharmacy	9,521,358	57,676

NSW
14,350,652
(+43,298
weekly
increase)

VIC
10,363,462
(+35,275
weekly
increase)

QLD
8,097,029
(+27,214
weekly
increase)

WA
4,316,709
(+9,252
weekly
increase)

TAS
814,471
(+4,566
weekly
increase)

SA
2,573,353
(+13,282
weekly
increase)

ACT
700,669
(+3,944
weekly
increase)

NT
240,911
(+596
weekly
increase)

362,420

doses administered to persons
residing in other territories or with
missing residential information

*General practice includes Aboriginal Community Health Centres, Royal Flying Doctor Service and other Commonwealth vaccination facilities

#Primary care site numbers are based on the number of sites participating in the rollout as at 06 March 2023.

Source: Australian Immunisation Register

Aboriginal and Torres Strait Islander peoples

Number of people vaccinated

Data as at:
08 Mar 2023
Updated weekly

Australia's COVID-19
Vaccine Program



People (16+) with at least one dose

453,727 **85.5%**

People (16+) with at least two doses

436,446 **82.3%**



Eligible people (16+) with three doses

246,590 **56.5%**

Eligible people (30+) with four doses

66,758 **35.4%**



People (12-15) with at least one dose

44,653 **63.6%**

People (12-15) with at least two doses

38,148 **54.4%**

118 Aboriginal community controlled health services (ACCHS) sites

1	25	13	36	14	2	6	21
ACT	NSW	NT	QLD	SA	TAS	VIC	WA

Residential State	Individuals Dose 1 % (16+)	Individuals Dose 2 % (16+)	Individuals Dose 3 % Eligible (aged 16+)	Individuals Dose 4 % Eligible (aged 30+)
ACT	92.4%	90.3%	65.8%	43.4%
NSW	87.8%	86.1%	53.3%	38.2%
NT	90.3%	86.3%	70.2%	26.7%
QLD	82.4%	78.8%	49.2%	37.8%
SA	81.4%	76.3%	61.0%	38.8%
TAS	89.2%	86.8%	60.1%	42.5%
VIC	90.9%	89.0%	62.6%	36.8%
WA	87.6%	82.3%	66.3%	30.3%
Unknown/Other Territories	72.7%	67.7%	51.5%	25.0%
National Coverage %	85.5%	82.3%	56.5%	35.4%
Number with a Dose	453,727	436,446	246,590	66,758
Total / Eligible Population	530,530	530,530	436,065	188,667

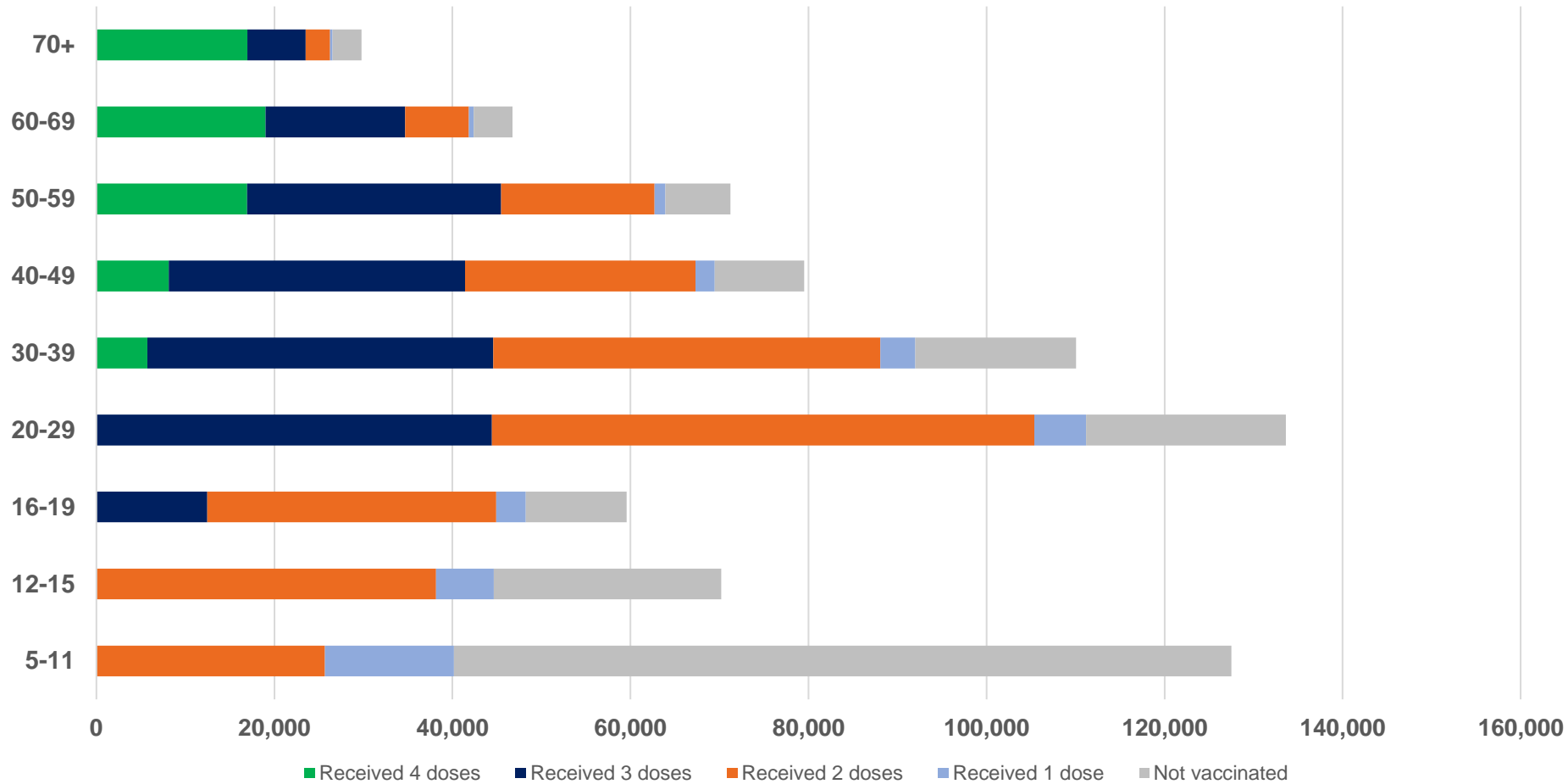
Identifying as Aboriginal and Torres Strait Islander is optional and the estimated population may be under reported. Numbers include all Aboriginal and Torres Strait Islander peoples who have received a vaccination, and are not limited to those administered in an ACCHS setting. The total population refers to the number of individuals that identify as Aboriginal and Torres Strait Islander in the Australian Immunisation Register, while the eligible population refers to the number of these individuals who meet the criteria for a further dose (based on completion of previous doses, age, and time period elapsed since last dose). Please note there may be people under 30 who are eligible, but these are not included in coverage rates or population to protect privacy.

Source: Australian Immunisation Register

Aboriginal and Torres Strait Islander peoples

Number of people vaccinated by age

Data as at:
08 Mar 2023
Updated weekly



Source: Australian Immunisation Register

Individuals with Culturally and Linguistically Diverse (CALD) backgrounds data

Data as at:
26 February 2023
Updated weekly

Australia's COVID-19
Vaccine Program

People over the age of 16

CALD population *	Total number of individuals in cohort	% People with at least one dose	% People who received two doses	% of eligible people who received three or more doses
General population	20,629,070	>95.0%	>95.0%	72.4%
People born overseas	4,296,068	94.4%	93.9%	73.8%
Speaks a language other than English at home	3,984,571	94.0%	93.4%	69.7%

	General population			Born Overseas			Speaks a language other than English at home		
	% with at least one dose	% who received two doses	% of eligible people who received three or more doses	% with at least one dose	% who received two doses	% of eligible people who received three or more doses	% with at least one dose	% who received two doses	% of eligible people who received three or more doses
ACT	>95.0%	>95.0%	80.8%	>95.0%	>95.0%	79.6%	>95.0%	94.8%	76.9%
NSW	>95.0%	>95.0%	70.5%	94.8%	94.3%	71.4%	94.0%	93.4%	66.6%
NT	88.5%	86.5%	79.6%	94.7%	94.3%	88.4%	93.6%	93.2%	87.0%
Qld	93.5%	92.1%	65.5%	92.1%	91.5%	68.5%	92.4%	91.7%	65.2%
SA	93.7%	92.0%	76.2%	92.6%	91.8%	76.0%	91.6%	90.6%	72.2%
Tas	>95.0%	93.7%	74.7%	92.7%	92.1%	77.0%	92.4%	91.8%	73.1%
Vic	>95.0%	>95.0%	74.5%	>95.0%	94.7%	73.9%	94.6%	94.1%	70.0%
WA	>95.0%	>95.0%	83.4%	>95.0%	94.5%	85.8%	>95.0%	94.6%	83.8%

*Individuals with Culturally and Linguistically Diverse (CALD) backgrounds are as reported in the 2021 Census, excluding those who have since departed Australia; deceased persons; those born in the UK, Ireland or NZ; and Aboriginal and/or Torres Strait Islander peoples. There is overlap across CALD cohorts where individuals may have reported they had more than one CALD characteristic in the 2021 Census.

Small negative changes may appear when compared with the previous report due to perturbation, data maturity and changes in population sizes.

Source: Australian Immunisation Register linked to the Multi-Agency Data Integration Project (Census 2021 characteristics). Coverage rates for the general population are as published for 1 March 2023.

Data as at:
09 March 2023#
Updated weekly

Residential aged care vaccination rollout



170,594

Aged care residents with at least one dose



169,339

Aged care residents with at least two doses



163,355

Aged care residents with at least three doses



135,527#

Aged care residents with at least four doses



>99%

Aged care workers with at least two doses nationally

Aged care resident vaccinations

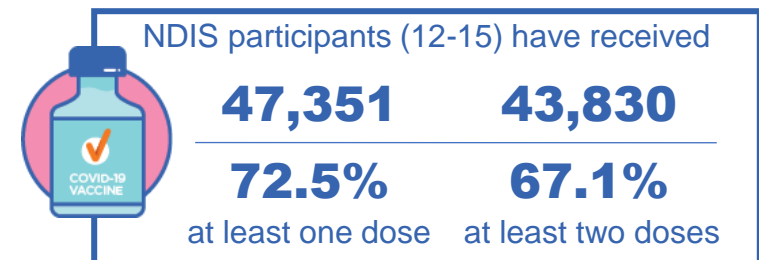
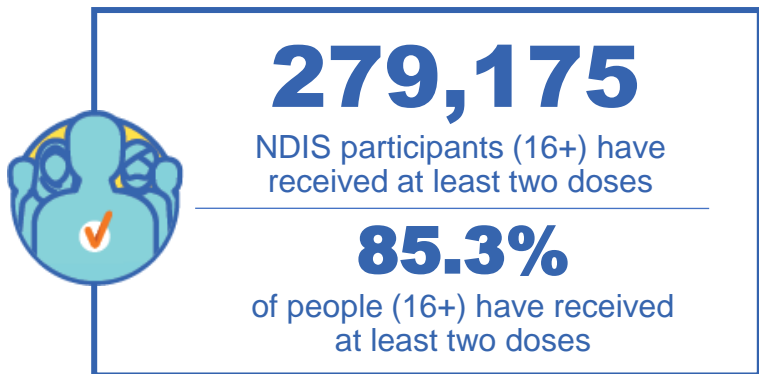
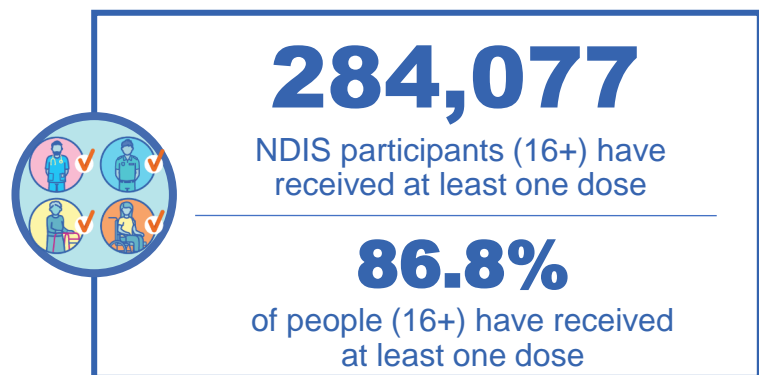
	Aged care residents with at least one dose	Aged care residents with at least two doses	Aged care residents with at least three doses	Aged care residents with at least four doses [#]
NSW	97.0%	96.3%	92.8%	75.7%
VIC	96.9%	96.4%	93.6%	80.9%
QLD	95.1%	94.4%	90.6%	74.0%
SA	96.0%	94.9%	91.3%	75.4%
WA	96.9%	96.1%	92.3%	74.7%
TAS	96.0%	95.1%	92.3%	77.9%
NT	96.9%	95.1%	90.7%	73.3%
ACT	98.0%	97.5%	95.1%	83.4%
National	96.5%	95.8%	92.4%	76.7%

[#]Aged Care Residents fourth dose data as at 02 March 2023 with the 'Winter dose' program from 2022 finalised. Reporting for the new booster program is being finalised and will be available soon.
Source: Residential aged care provider self-reported COVID-19 vaccination information and matched AIR data of residents in permanent residential RACFs.

National Disability Insurance Scheme (NDIS) reported vaccinations

Data as at:
05 Mar 2023
Updated weekly

Australia's COVID-19
Vaccine Program



NDIS participant vaccinations

	% People aged 16+ with at least one dose	% People aged 16+ with at least two doses	% People aged 16+ with three doses	% People aged 16+ with four doses
ACT	89.6%	88.5%	83.0%	39.3%
NSW	87.3%	86.0%	74.5%	35.3%
NT	78.3%	76.0%	78.8%	27.7%
QLD	84.7%	83.1%	70.6%	29.5%
SA	84.7%	82.8%	77.3%	31.2%
TAS	87.4%	85.5%	76.0%	32.5%
VIC	88.0%	86.6%	76.7%	33.1%
WA	88.2%	86.6%	81.3%	33.5%
National	86.8%	85.3%	75.4%	32.9%

Source: Linkage between National Disability Insurance Agency data and the Australian Immunisation Register. 'Total' NDIS Participant number last obtained as at 06 March 2023. Australian Immunisation Register data as at 05 March 2023. Includes all participants regardless of residence type.

Explanatory Notes

The Australian Immunisation Register (AIR). The Australian Immunisation Register is a national register that records all vaccines given to all people in Australia.

People received at least x dose/s. The count of unique people who have received at least x dose/s of a COVID-19 vaccine. People with at least x dose/s encompasses people who received x dose/s or more. Please note, to capture a person's current level of protection, this methodology includes any doses an individual received overseas where they have been uploaded into the Australian Immunisation Register, and where the vaccine brand is recognised by the TGA. Some people may not be included in this count where they are viewed as no longer in scope of the vaccination rollout (for example, where a person has permanently left Australia, or they have passed away).

Coverage calculations. First and second dose rates are calculated by taking the number of unique people who have received the corresponding dose from the Australian Immunisation Register and dividing this by the Australian Bureau of Statistics Estimated Residential Population (2021). For doses that are third in sequence or above, the coverage rates often refer to the *eligible* population – that is, the number of people with the dose over the number of people who meet the criteria for that dose in the Australian Immunisation Register. Vaccine coverage uses the state of residence (based on a person's Medicare address).

Eligible population. Eligible population refers to the number of these individuals who meet the criteria for a given dose based on completion of previous doses, age, and time period elapsed since last dose. Please note that the Australian Immunisation Register cannot identify immunocompromised individuals.

Vaccine doses administered. The total number of COVID-19 doses administered refers to the number of doses administered rather than the number of people who have received a COVID-19 vaccine. In most cases (unless otherwise specified) all doses are included (regardless of age of recipient or the dose number), and when these numbers are provided by state, it is typically the state that the dose was physically administered in as opposed to the state where the person resides on a usual basis.

Aboriginal and Torres Strait Islander Peoples. The Aboriginal and Torres Strait Islander population refers to the number of individuals that identify as Aboriginal and Torres Strait Islander in the Australian Immunisation Register. Identifying as Aboriginal and Torres Strait Islander is optional, and the estimated population may be under reported. Numbers include all Aboriginal and Torres Strait Islander peoples who have received a vaccination and are not limited to those administered in an ACCHS setting.

Update Information: Vaccine data is sourced from the Australian Immunisation Register as at 11:59pm 08 March 2023 unless otherwise noted.