



Australian Government

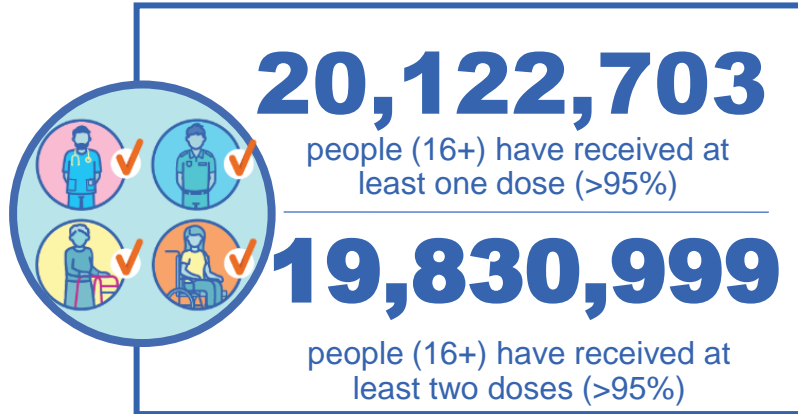
Department of Health and Aged Care

COVID-19 Vaccine Roll-out

23 February 2023

Data as at:
22 Feb 2023
Updated weekly

Total vaccine doses



64,862,790 total vaccine doses administered

+111,985 weekly increase




*Administration state breakdown indicates state in which a vaccine was administered

Source: Australian Immunisation Register


Third Doses

Data as at:
22 Feb 2023##
Updated weekly




246,219
Indigenous people who have received three or more doses

56.6%
of eligible population (435,326)




163,308
Aged Care Residents who have received three or more doses##

96.4%
of eligible population (169,332)



210,213 NDIS participants who have received three or more doses#	24,818 NDIS residents who have received three or more doses#
75.6% of eligible population (278,000)	90.2% of eligible population (27,000)



14,355,499 total people who have received three or more doses

+2,874 weekly increase

72.4% of eligible population (19,824,127)

	Number of People	Weekly Increase	% of Eligible
ACT	281,829	<10	80.8%
NSW	4,399,247	772	70.5%
NT	132,952	<10	79.6%
QLD	2,506,571	725	65.5%
SA	1,030,048	150	76.2%
TAS	325,621	<10	74.7%
VIC	3,812,207	998	74.5%
WA	1,736,681	413	83.4%

130,343 doses administered to persons residing in other territories or with missing residential information


*People may belong to multiple groups and could be represented in the above breakdowns multiple times.
#NDIS participants data as at 17 February 2023. ##Aged Care Residents data as at 23 February 2023.

Source: Australian Immunisation Register

Fourth Doses

Data as at:
22 Feb 2023#
Updated weekly

Australia's COVID-19
Vaccine Program



135,358
Aged Care Residents who have received four or more doses#

85.4%
of eligible population (158,501)



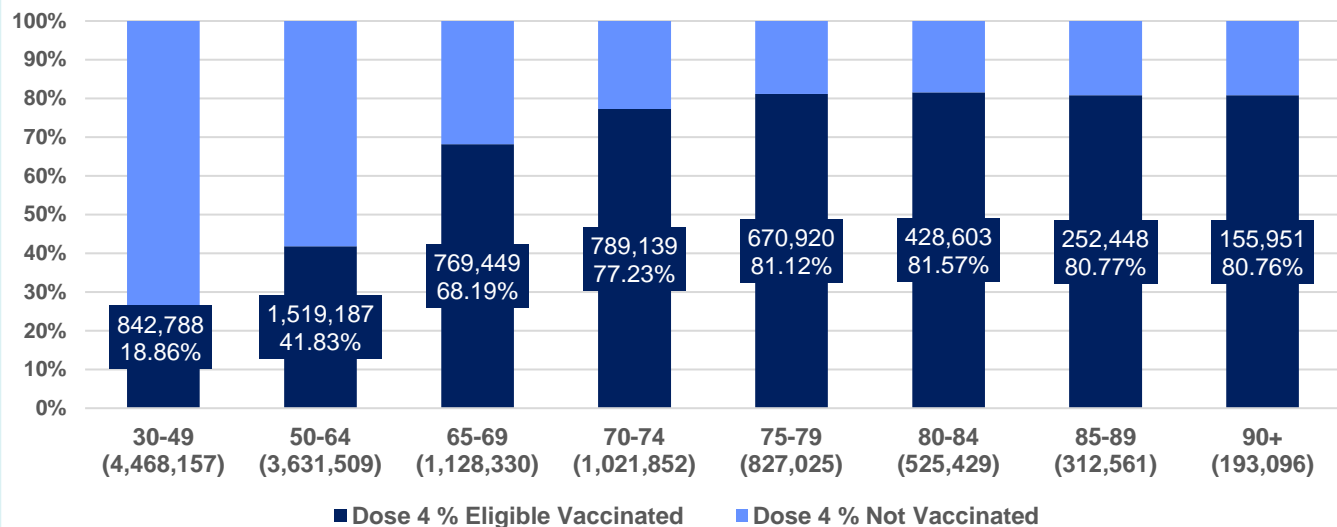
5,480,619
+13,867
44.8%
3,066,510
76.5%

total people (16+) who have received four doses
weekly increase (16+)

of eligible population (30+) (12,107,959)

total people (65+) who have received four doses
of eligible population (65+) (4,008,293)

% Individuals eligible vaccinated by current age



	Number of People 16+	Weekly Increase
ACT	121,794	452
NSW	1,747,636	4,290
NT	29,865	100
QLD	1,038,704	2,025
SA	428,011	1,119
TAS	146,072	354
VIC	1,370,226	3,979
WA	566,757	1,476

31,554 doses administered to persons residing in other territories or with missing residential information

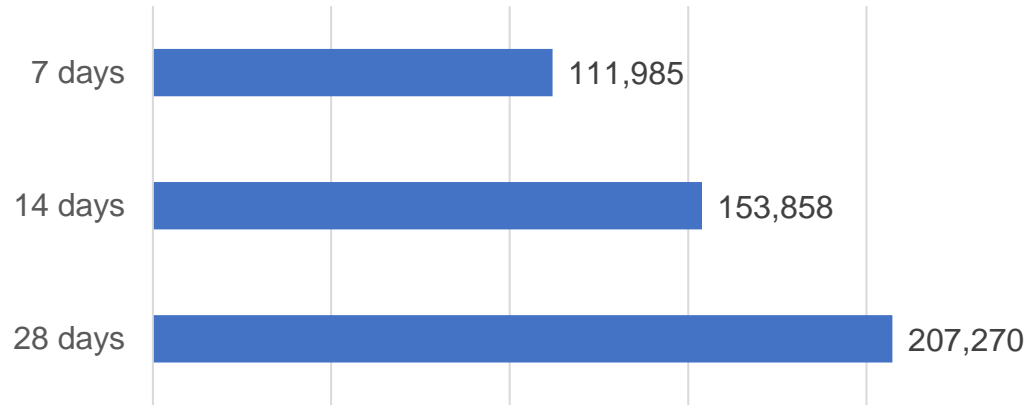
*People become eligible for a fourth dose three months after their third dose. Individuals may belong to multiple groups and could be represented in the above multiple times.
#Aged Care Residents data as at 23 February 2023.
Please note, that as of 20th February 2023, ATAGI announced the expansion of fourth dose eligibility. Our external reports do not currently capture the increased eligibility, but will be updated shortly to align with the latest ATAGI advice.

Source: Australian Immunisation Register

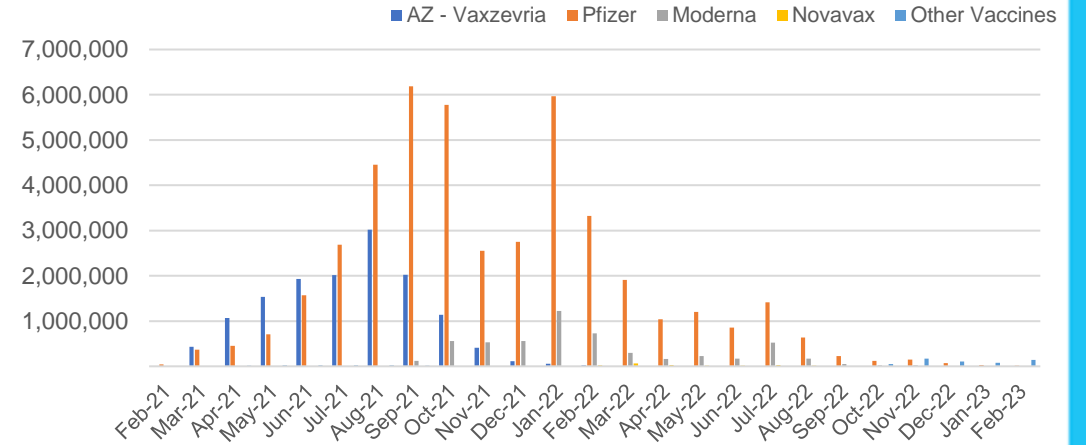
Vaccine milestone charts

Data as at:
22 Feb 2023
Updated weekly

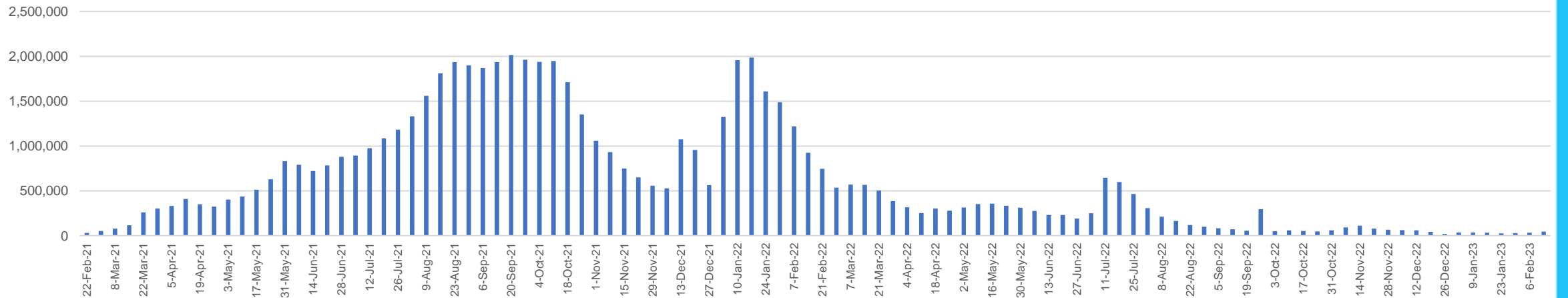
Doses Reported



Doses by administration month and vaccine type



Doses Administered by Week



*Sourced from the Australian Immunisation Register.

Data as at:
22 Feb 2023
Updated weekly

Doses by age and jurisdiction

	AUS	ACT	NSW	NT	QLD	SA	TAS	VIC	WA
5 to 11 - dose 1	1,104,726	29,848	331,631	11,493	190,113	77,099	26,009	300,860	128,444
5 to 11 - dose 2	881,525	26,617	273,345	8,272	146,457	62,049	21,752	239,244	98,840
5 to 11 - population	2,269,663	40,719	711,525	25,120	476,567	149,048	45,549	568,488	252,235
5 to 11 % with dose 1	48.67%	73.30%	46.61%	45.75%	39.89%	51.73%	57.10%	52.92%	50.92%
5 to 11 % with dose 2	38.84%	65.37%	38.42%	32.93%	30.73%	41.63%	47.76%	42.08%	39.19%
12 to 15 - dose 1	1,007,706	20,027	308,917	10,094	195,662	65,930	22,000	262,973	111,978
12 to 15 - dose 2	939,622	19,365	291,968	8,950	179,767	61,439	20,611	247,439	101,907
12 to 15 - population	1,279,387	20,888	399,352	13,190	278,225	85,541	27,469	313,711	140,783
12 to 15 % with dose 1	78.76%	95.88%	77.35%	76.53%	70.33%	77.07%	80.09%	83.83%	79.54%
12 to 15 % with dose 2	73.44%	92.71%	73.11%	67.85%	64.61%	71.82%	75.03%	78.87%	72.39%
16 and over - dose 1	20,122,703	353,877	6,324,720	170,977	3,889,013	1,378,765	443,849	5,184,752	2,110,212
16 and over - dose 2	19,830,999	348,723	6,239,422	167,099	3,831,221	1,353,009	436,149	5,120,675	2,083,529
16 and over - dose 3	14,355,499	281,829	4,399,247	132,952	2,506,571	1,030,048	325,621	3,812,207	1,736,681
16 and over - population	20,629,070	364,811	6,504,442	193,211	4,161,009	1,471,062	465,436	5,279,175	2,185,967
16 and over % with dose 1	97.55%	97.00%	97.24%	88.49%	93.46%	93.73%	95.36%	98.21%	96.53%
16 and over % with dose 2	96.13%	95.59%	95.93%	86.49%	92.07%	91.97%	93.71%	97.00%	95.31%
16 and over % with dose 3	69.59%	77.25%	67.63%	68.81%	60.24%	70.02%	69.96%	72.21%	79.45%
30 and over - dose 1	15,748,017	274,295	4,975,750	126,899	3,040,244	1,096,315	353,043	4,050,412	1,653,753
30 and over - dose 2	15,554,576	270,769	4,917,290	124,691	3,003,797	1,080,578	348,205	4,005,842	1,636,460
30 and over - dose 3	12,155,871	231,494	3,755,281	104,976	2,179,957	881,329	281,962	3,188,728	1,434,907
30 and over - dose 4	5,428,485	120,063	1,729,747	29,228	1,030,878	425,264	144,948	1,355,303	562,126
30 and over - population	16,012,407	268,806	5,065,001	140,954	3,219,394	1,157,853	368,927	4,079,079	1,709,089
30 and over % with dose 1	98.35%	>99%	98.24%	90.03%	94.44%	94.69%	95.69%	>99%	96.76%
30 and over % with dose 2	97.14%	>99%	97.08%	88.46%	93.30%	93.33%	94.38%	98.20%	95.75%
30 and over % with dose 3	75.92%	86.12%	74.14%	74.48%	67.71%	76.12%	76.43%	78.17%	83.96%
30 and over % with dose 4	33.90%	44.67%	34.15%	20.74%	32.02%	36.73%	39.29%	33.23%	32.89%
65 and over - dose 1	4,401,182	64,781	1,422,854	20,568	856,018	350,953	115,099	1,099,040	433,133
65 and over - dose 2	4,362,028	63,985	1,410,196	20,306	849,704	348,285	114,400	1,088,586	430,097
65 and over - dose 3	4,013,878	60,716	1,285,467	18,501	781,139	326,767	108,054	994,123	408,534
65 and over - dose 4	3,066,510	51,459	976,506	12,067	608,828	258,438	87,272	741,523	310,639
65 and over - population	4,313,779	60,463	1,393,416	21,593	864,448	352,458	116,037	1,072,562	431,884
65 and over % with dose 1	>99%	>99%	>99%	95.25%	>99%	>99%	>99%	>99%	>99%
65 and over % with dose 2	>99%	>99%	>99%	94.04%	98.29%	98.82%	98.59%	>99%	>99%
65 and over % with dose 3	93.05%	>99%	92.25%	85.68%	90.36%	92.71%	93.12%	92.69%	94.59%
65 and over % with dose 4	71.09%	85.11%	70.08%	55.88%	70.43%	73.32%	75.21%	69.14%	71.93%

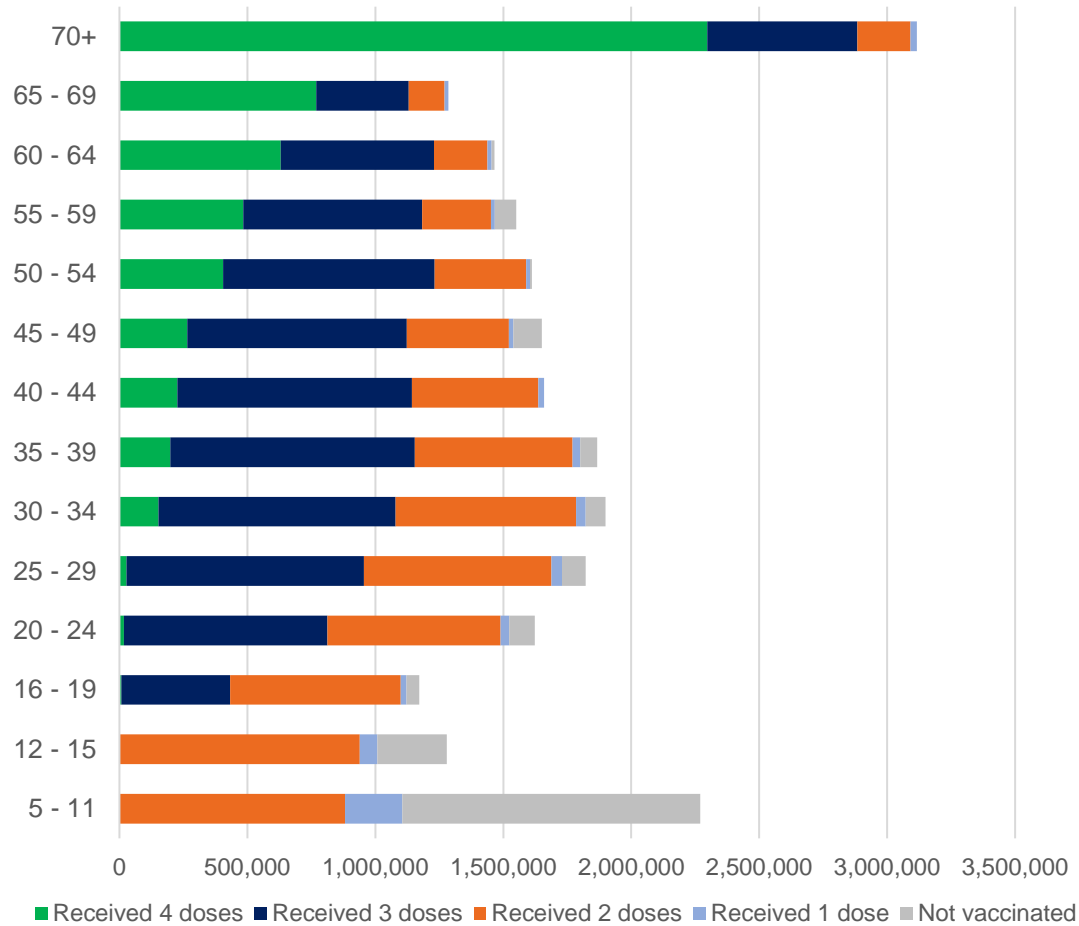
*National population will not equal sum of listed jurisdictions due to a small number of people counted in national population residing in some 'other' territories. Sum of state doses will not add to national total as some records are unable to be geocoded to a State or Territory.

Doses sourced from Australian Immunisation Register, population from ABS ERP June 2021

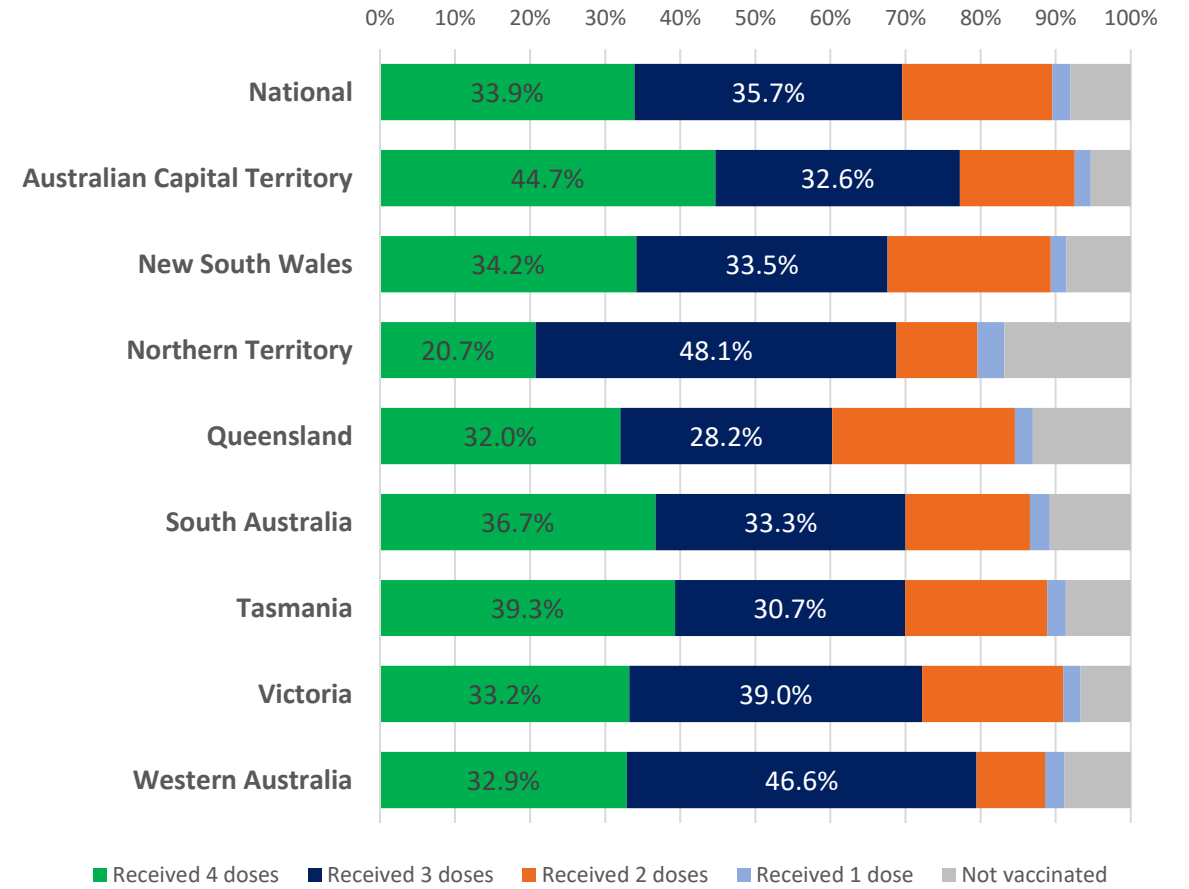
Data as at:
22 Feb 2023
Updated weekly

Vaccinations by age and location

Number of people vaccinated by age

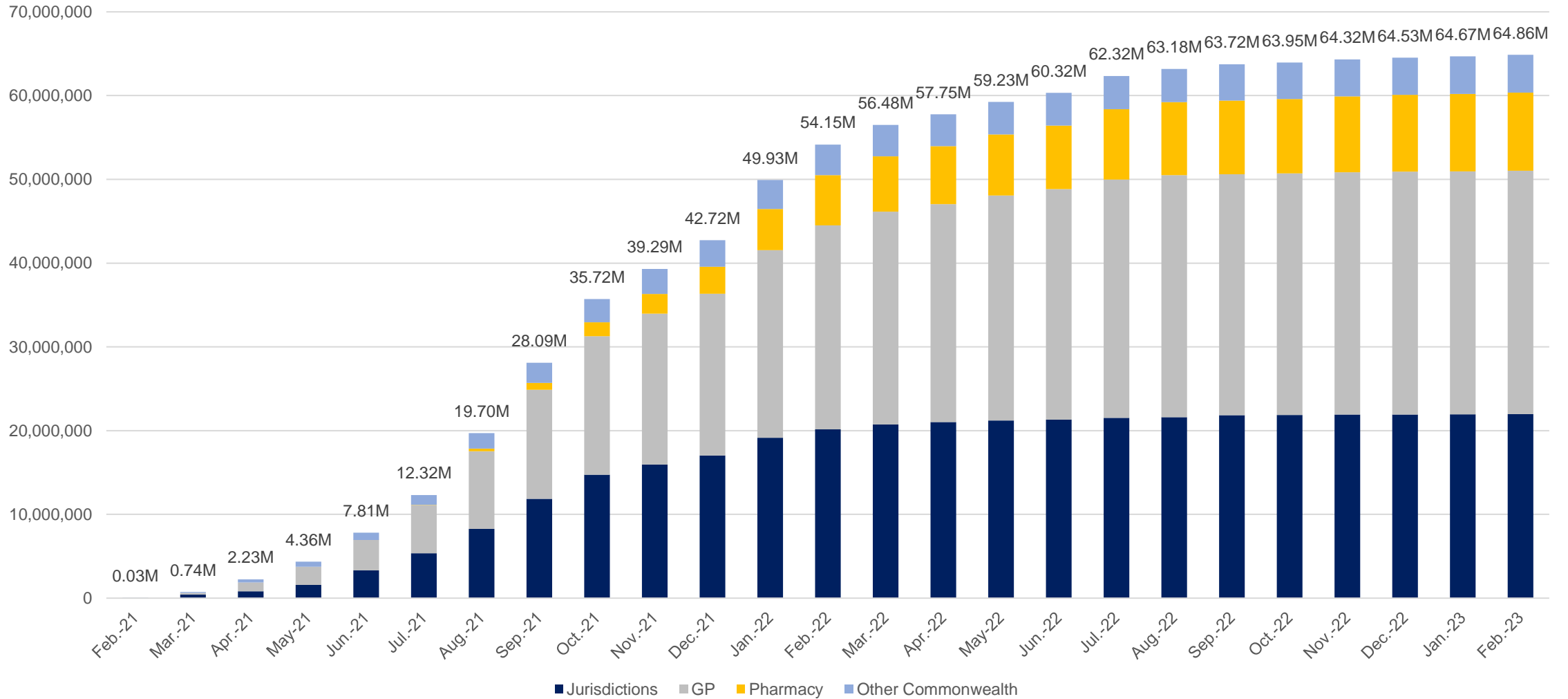


Individuals vaccinated by residential location



Data as at:
22 Feb 2023
Updated weekly

Cumulative doses administered by channel



Source: Australian Immunisation Register

Data as at:
22 Feb 2023
Updated weekly

Commonwealth primary care



Primary care vaccine administration sites#

4,616

GPs

177

ACCHS

2,985

Pharmacies



41,547,284 total vaccine doses administered
in primary care settings

+106,802 weekly increase

Primary care vaccinations by provider type

	Doses administered	Weekly increase
General Practice*	32,150,490	47,394
Pharmacy	9,396,794	59,408

NSW
14,263,389
(+32,028 weekly increase)

VIC
10,294,561
(+26,701 weekly increase)

QLD
8,042,873
(+19,556 weekly increase)

WA
4,296,276
(+9,546 weekly increase)

TAS
804,899
(+3,499 weekly increase)

SA
2,545,695
(+11,550 weekly increase)

ACT
692,006
(+3,484 weekly increase)

NT
239,840
(+303 weekly increase)

367,745

doses administered to persons residing in other territories or with missing residential information

*General practice includes Aboriginal Community Health Centres, Royal Flying Doctor Service and other Commonwealth vaccination facilities

#Primary care site numbers are based on the number of sites participating in the rollout as at 20 February 2023.

Source: Australian Immunisation Register

Aboriginal and Torres Strait Islander peoples

Number of people vaccinated

Data as at:
22 Feb 2023
Updated weekly

Australia's COVID-19
Vaccine Program



People (16+) with at least one dose

453,102 85.5%

People (16+) with at least two doses

435,838 82.3%



Eligible people (16+) with three doses

246,219 56.6%

Eligible people (30+) with four doses

66,366 35.3%



People (12-15) with at least one dose

44,898 63.9%

People (12-15) with at least two doses

38,447 54.7%

97 Aboriginal community controlled health services (ACCHS) sites

1	18	14	29	11	2	6	16
ACT	NSW	NT	QLD	SA	TAS	VIC	WA

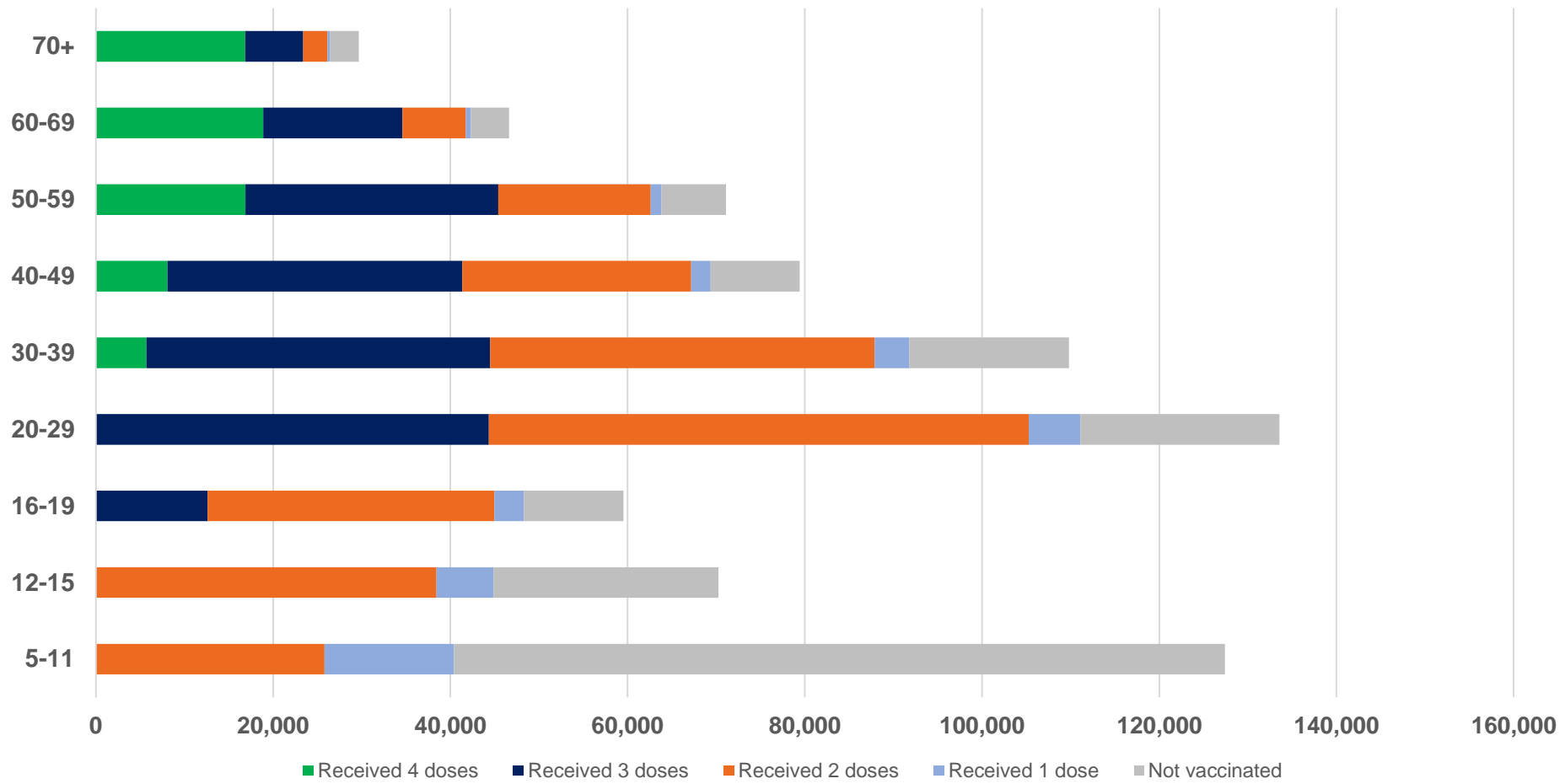
Residential State	Individuals Dose 1 % (16+)	Individuals Dose 2 % (16+)	Individuals Dose 3 % Eligible (aged 16+)	Individuals Dose 4 % Eligible (aged 30+)
ACT	92.3%	90.2%	65.7%	43.2%
NSW	87.9%	86.0%	53.2%	38.1%
NT	90.3%	86.4%	70.4%	26.7%
QLD	82.4%	78.9%	49.2%	37.8%
SA	81.3%	76.3%	61.1%	38.7%
TAS	89.2%	86.8%	60.1%	42.3%
VIC	90.9%	89.0%	62.6%	36.8%
WA	87.6%	82.3%	66.4%	30.3%
Unknown/Other Territories	72.9%	67.9%	51.5%	24.9%
National Coverage %	85.5%	82.3%	56.6%	35.3%
Number with a Dose	453,102	435,838	246,219	66,366
Total / Eligible Population	529,765	529,765	435,326	187,947

Identifying as Aboriginal and Torres Strait Islander is optional and the estimated population may be under reported. Numbers include all Aboriginal and Torres Strait Islander peoples who have received a vaccination, and are not limited to those administered in an ACCHS setting. The total population refers to the number of individuals that identify as Aboriginal and Torres Strait Islander in the Australian Immunisation Register, while the eligible population refers to the number of these individuals who meet the criteria for a further dose (based on completion of previous doses, age, and time period elapsed since last dose). Please note there may be people under 30 who are eligible, but these are not included in coverage rates or population to protect privacy.

Aboriginal and Torres Strait Islander peoples

Number of people vaccinated by age

Data as at:
22 Feb 2023
Updated weekly



Source: Australian Immunisation Register

Individuals with Culturally and Linguistically Diverse (CALD) backgrounds data

Data as at:
12 February 2023
Updated weekly

Australia's COVID-19
Vaccine Program

People over the age of 16

CALD population *	Total number of individuals in cohort	% People with at least one dose	% People who received two doses	% of eligible people who received three or more doses
General population	20,629,070	>95.0%	>95.0%	72.4%
People born overseas	4,296,068	94.5%	94.0%	73.6%
Speaks a language other than English at home	3,984,571	94.0%	93.4%	69.5%

	General population			Born Overseas			Speaks a language other than English at home		
	% with at least one dose	% who received two doses	% of eligible people who received three or more doses	% with at least one dose	% who received two doses	% of eligible people who received three or more doses	% with at least one dose	% who received two doses	% of eligible people who received three or more doses
ACT	>95.0%	>95.0%	80.9%	>95.0%	>95.0%	79.4%	>95.0%	94.9%	76.6%
NSW	>95.0%	>95.0%	70.5%	94.8%	94.3%	71.1%	94.0%	93.4%	66.4%
NT	88.5%	86.5%	79.6%	94.9%	94.5%	88.3%	93.8%	93.4%	87.0%
Qld	93.4%	92.0%	65.5%	92.2%	91.5%	68.2%	92.4%	91.7%	64.8%
SA	93.7%	92.0%	76.2%	92.7%	91.8%	75.8%	91.7%	90.7%	72.0%
Tas	>95.0%	93.7%	74.7%	92.9%	92.4%	76.7%	92.7%	92.1%	72.8%
Vic	>95.0%	>95.0%	74.5%	>95.0%	94.7%	73.8%	94.7%	94.1%	69.8%
WA	>95.0%	>95.0%	83.4%	>95.0%	94.6%	85.6%	>95.0%	94.6%	83.7%

*Individuals with Culturally and Linguistically Diverse (CALD) backgrounds are as reported in the 2021 Census, excluding those who have since departed Australia; deceased persons; those born in the UK, Ireland or NZ; and Aboriginal and/or Torres Strait Islander peoples. There is overlap across CALD cohorts where individuals may have reported they had more than one CALD characteristic in the 2021 Census.

Small negative changes may appear when compared with the previous report due to perturbation, data maturity and changes in population sizes.

Source: Australian Immunisation Register linked to the Multi-Agency Data Integration Project (Census 2021 characteristics). Coverage rates for the general population are as published for 15 February 2023.

Data as at:
23 February 2023
Updated weekly

Residential aged care vaccination rollout



170,590

Aged care residents with at least one dose



169,332

Aged care residents with at least two doses



163,308

Aged care residents with at least three doses



135,358

Aged care residents with at least four doses



>99%

Aged care workers with at least two doses nationally

Aged care resident vaccinations

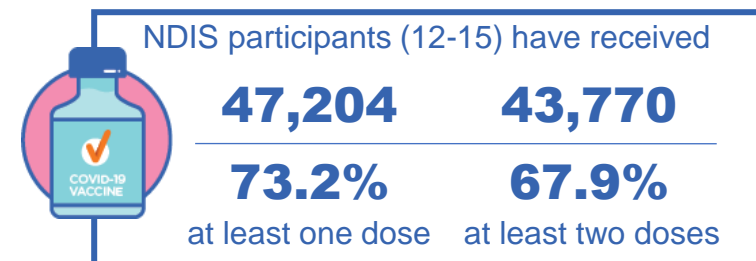
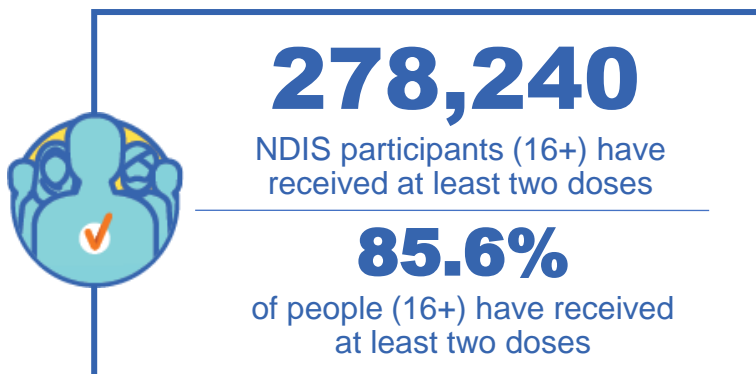
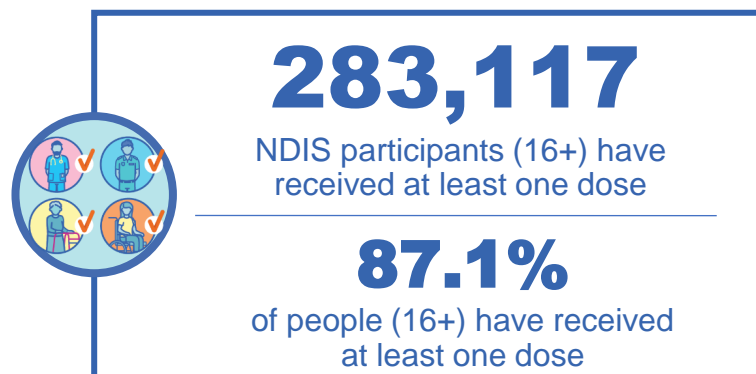
	Aged care residents with at least one dose	Aged care residents with at least two doses	Aged care residents with at least three doses	Aged care residents with at least four doses
NSW	97.0%	96.3%	92.7%	75.5%
VIC	96.9%	96.4%	93.6%	80.8%
QLD	95.1%	94.4%	90.6%	73.7%
SA	96.0%	94.9%	91.3%	75.4%
WA	96.9%	96.1%	92.3%	74.6%
TAS	96.0%	95.1%	92.2%	77.9%
NT	96.9%	95.1%	90.7%	73.3%
ACT	98.0%	97.5%	95.1%	83.3%
National	96.5%	95.8%	92.4%	76.6%

Source: Residential aged care provider self-reported COVID-19 vaccination information and matched AIR data of residents in permanent residential RACFs.

National Disability Insurance Scheme (NDIS) reported vaccinations

Data as at:
17 Feb 2023
Updated weekly

Australia's COVID-19
Vaccine Program



NDIS participant vaccinations

	% People aged 16+ with at least one dose	% People aged 16+ with at least two doses	% People aged 16+ with three doses	% People aged 16+ with four doses
ACT	89.8%	88.7%	83.1%	39.4%
NSW	87.7%	86.3%	74.7%	35.6%
NT	78.3%	76.0%	79.0%	27.9%
QLD	85.1%	83.5%	70.7%	29.7%
SA	85.1%	83.3%	77.5%	31.4%
TAS	87.5%	85.6%	76.1%	32.6%
VIC	88.4%	87.0%	76.9%	33.3%
WA	88.5%	86.9%	81.4%	33.7%
National	87.1%	85.6%	75.6%	33.2%

Source: Linkage between National Disability Insurance Agency data and the Australian Immunisation Register. 'Total' NDIS Participant number last obtained as at 05 February 2023. Australian Immunisation Register data as at 17 February 2023. Includes all participants regardless of residence type.

Explanatory Notes

The Australian Immunisation Register (AIR). The Australian Immunisation Register is a national register that records all vaccines given to all people in Australia.

People received at least x dose/s. The count of unique people who have received at least x dose/s of a COVID-19 vaccine. People with at least x dose/s encompasses people who received x dose/s or more. Please note, to capture a person's current level of protection, this methodology includes any doses an individual received overseas where they have been uploaded into the Australian Immunisation Register, and where the vaccine brand is recognised by the TGA. Some people may not be included in this count where they are viewed as no longer in scope of the vaccination rollout (for example, where a person has permanently left Australia, or they have passed away).

Coverage calculations. First and second dose rates are calculated by taking the number of unique people who have received the corresponding dose from the Australian Immunisation Register and dividing this by the Australian Bureau of Statistics Estimated Residential Population (2021). For doses that are third in sequence or above, the coverage rates often refer to the *eligible* population – that is, the number of people with the dose over the number of people who meet the criteria for that dose in the Australian Immunisation Register. Vaccine coverage uses the state of residence (based on a person's Medicare address).

Eligible population. Eligible population refers to the number of these individuals who meet the criteria for a given dose based on completion of previous doses, age, and time period elapsed since last dose. Please note that the Australian Immunisation Register cannot identify immunocompromised individuals.

Vaccine doses administered. The total number of COVID-19 doses administered refers to the number of doses administered rather than the number of people who have received a COVID-19 vaccine. In most cases (unless otherwise specified) all doses are included (regardless of age of recipient or the dose number), and when these numbers are provided by state, it is typically the state that the dose was physically administered in as opposed to the state where the person resides on a usual basis.

Aboriginal and Torres Strait Islander Peoples. The Aboriginal and Torres Strait Islander population refers to the number of individuals that identify as Aboriginal and Torres Strait Islander in the Australian Immunisation Register. Identifying as Aboriginal and Torres Strait Islander is optional, and the estimated population may be under reported. Numbers include all Aboriginal and Torres Strait Islander peoples who have received a vaccination and are not limited to those administered in an ACCHS setting.

Update Information: Vaccine data is sourced from the Australian Immunisation Register as at 11:59pm 22 February 2023 unless otherwise noted.