



Australian Government

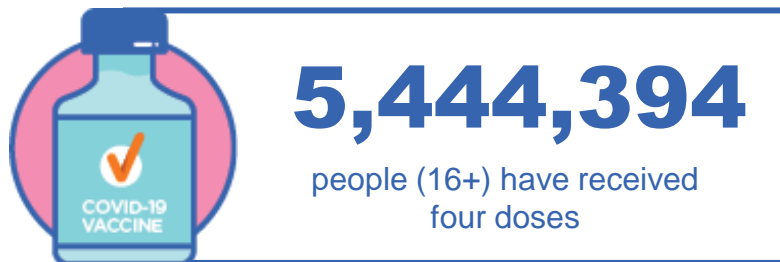
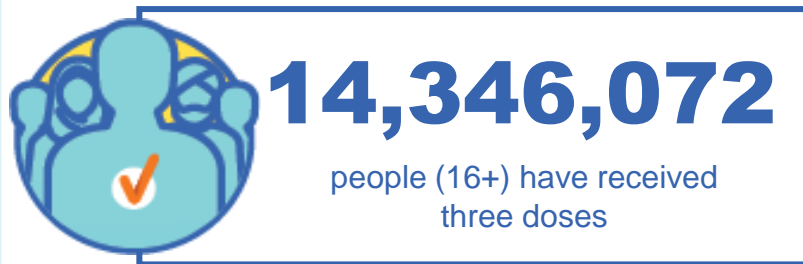
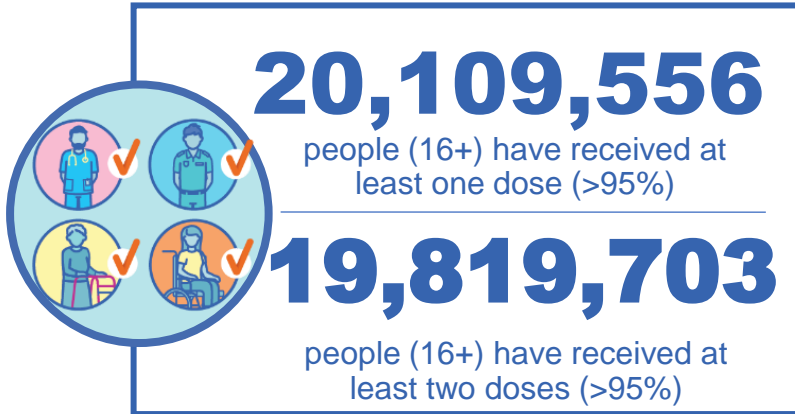
Department of Health and Aged Care

COVID-19 Vaccine Roll-out

02 February 2023

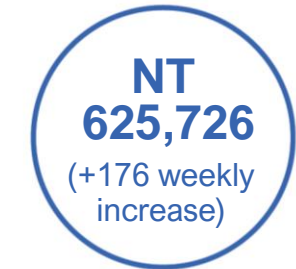
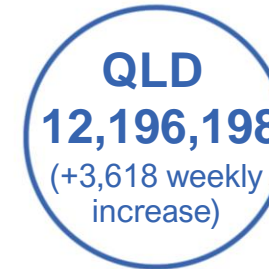
Data as at:
01 Feb 2023
Updated weekly

Total vaccine doses



64,680,108 total vaccine doses administered

+24,588 weekly increase

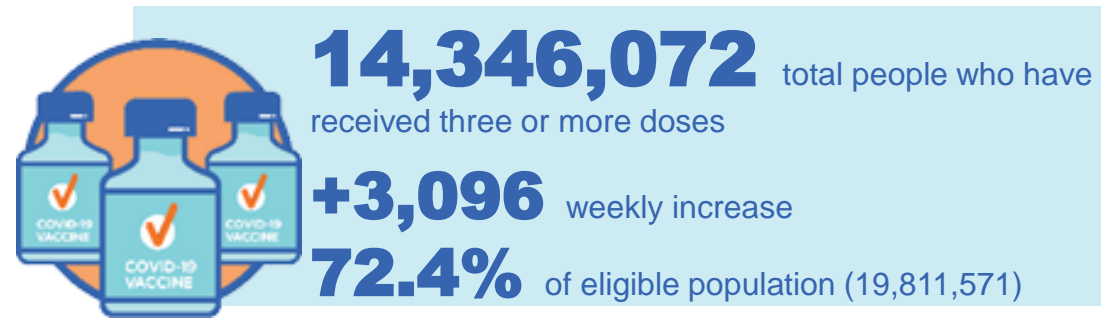
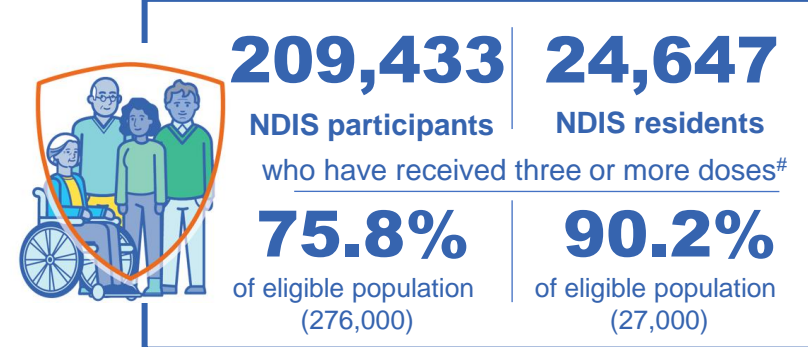
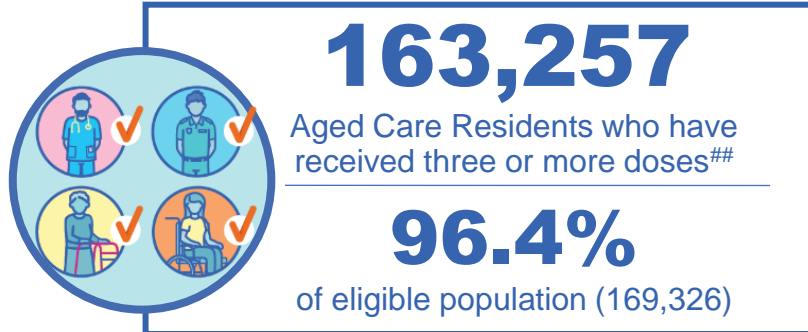
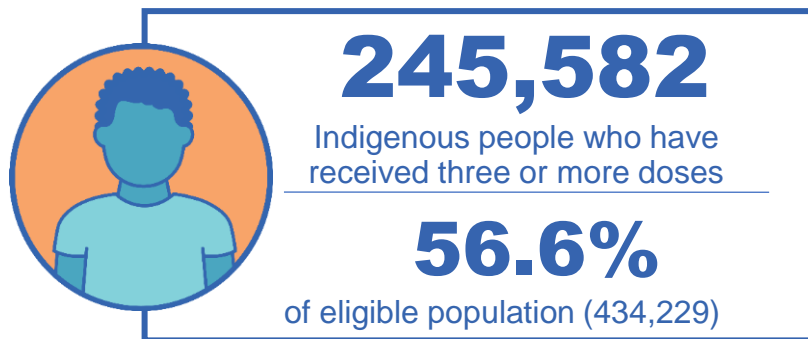


*Administration state breakdown indicates state in which a vaccine was administered

Source: Australian Immunisation Register

Third Doses

Data as at:
01 Feb 2023
Updated weekly



	Number of People	Weekly Increase	% of Eligible
ACT	281,851	41	80.9%
NSW	4,396,488	967	70.5%
NT	133,074	<10	79.7%
QLD	2,503,196	1,436	65.5%
SA	1,029,344	165	76.2%
TAS	325,565	87	74.7%
VIC	3,809,126	1,019	74.5%
WA	1,735,367	487	83.4%

132,061 doses administered to persons residing in other territories or with missing residential information


*People may belong to multiple groups and could be represented in the above breakdowns multiple times.
#NDIS participants data as at 29 January 2023. ##Aged Care Residents data as at 02 February 2023.

Source: Australian Immunisation Register

Fourth Doses

Data as at:
01 Feb 2023
Updated weekly

Australia's COVID-19
Vaccine Program



135,060
Aged Care Residents who have received four or more doses#

85.7%
of eligible population (157,626)



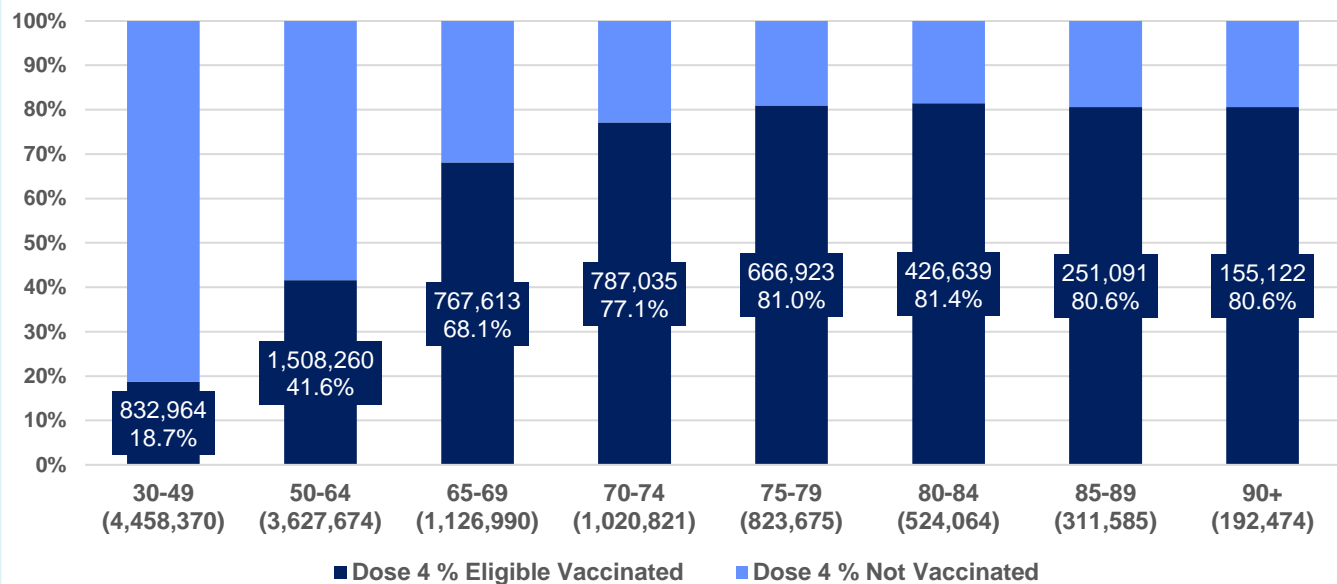
5,444,394
+8,369
44.6%
3,054,423
76.4%

total people (16+) who have received four doses
weekly increase (16+)

of eligible population (30+) (12,085,653)

total people (65+) who have received four doses
of eligible population (65+) (3,999,609)

% Individuals eligible vaccinated by current age



	Number of People 16+	Weekly Increase
ACT	120,647	282
NSW	1,736,069	2,797
NT	29,516	82
QLD	1,032,963	1,440
SA	425,561	440
TAS	145,235	176
VIC	1,359,926	2,363
WA	562,588	1,079

31,889

doses administered to persons residing in other territories or with missing residential information

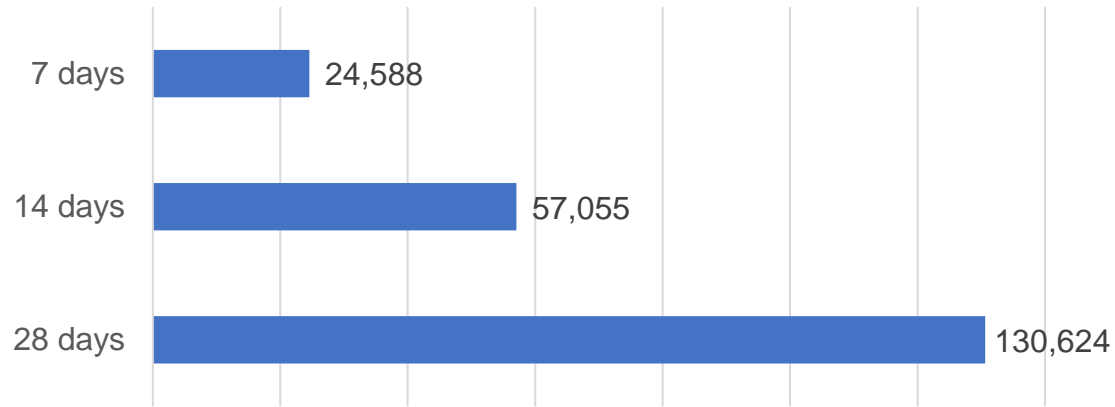
*People become eligible for a fourth dose three months after their third dose. Individuals may belong to multiple groups and could be represented in the above multiple times.
#Aged Care Residents data as at 02 February 2023.

Source: Australian Immunisation Register

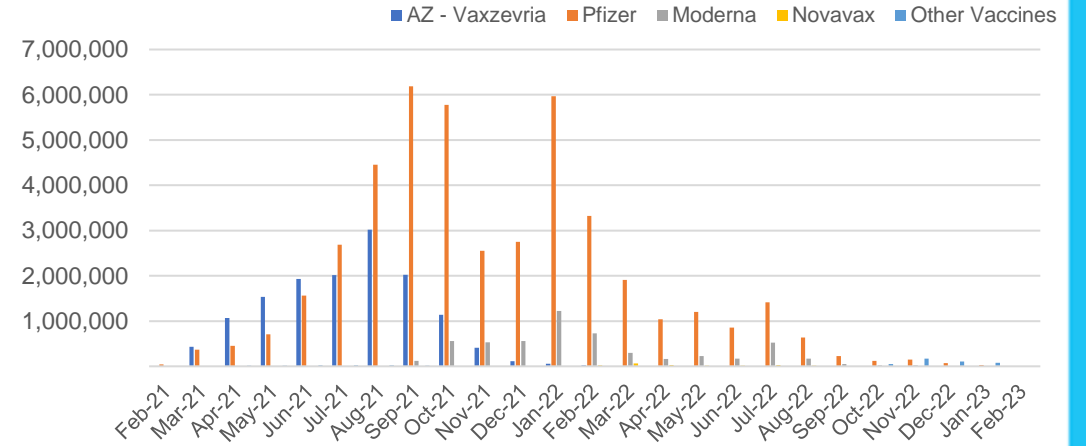
Vaccine milestone charts

Data as at:
01 Feb 2023
Updated weekly

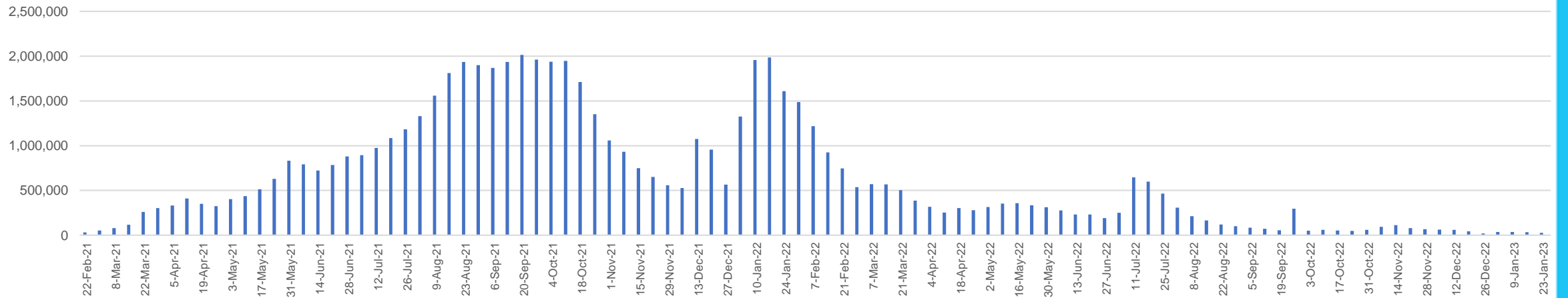
Doses Reported



Doses by administration month and vaccine type



Doses Administered by Week



*Sourced from the Australian Immunisation Register.

Data as at:
01 Feb 2023
Updated weekly

Doses by age and jurisdiction

	AUS	ACT	NSW	NT	QLD	SA	TAS	VIC	WA
5 to 11 - dose 1	1,115,403	30,091	334,909	11,646	191,908	77,807	26,288	303,560	129,704
5 to 11 - dose 2	889,491	26,813	275,839	8,364	147,702	62,613	21,971	241,334	99,809
5 to 11 - population	2,269,663	40,719	711,525	25,120	476,567	149,048	45,549	568,488	252,235
5 to 11 % with dose 1	49.14%	73.90%	47.07%	46.36%	40.27%	52.20%	57.71%	53.40%	51.42%
5 to 11 % with dose 2	39.19%	65.85%	38.77%	33.30%	30.99%	42.01%	48.24%	42.45%	39.57%
12 to 15 - dose 1	1,011,739	20,027	310,227	10,135	196,559	66,155	22,052	264,007	112,231
12 to 15 - dose 2	945,294	19,370	293,691	9,025	181,041	61,739	20,697	248,940	102,414
12 to 15 - population	1,279,387	20,888	399,352	13,190	278,225	85,541	27,469	313,711	140,783
12 to 15 % with dose 1	79.08%	95.88%	77.68%	76.84%	70.65%	77.34%	80.28%	84.16%	79.72%
12 to 15 % with dose 2	73.89%	92.73%	73.54%	68.42%	65.07%	72.17%	75.35%	79.35%	72.75%
16 and over - dose 1	20,109,556	353,832	6,321,599	171,024	3,884,185	1,377,682	443,707	5,180,350	2,107,475
16 and over - dose 2	19,819,703	348,695	6,236,788	167,168	3,826,706	1,352,045	436,038	5,117,036	2,080,952
16 and over - dose 3	14,346,072	281,851	4,396,488	133,074	2,503,196	1,029,344	325,565	3,809,126	1,735,367
16 and over - population	20,629,070	364,811	6,504,442	193,211	4,161,009	1,471,062	465,436	5,279,175	2,185,967
16 and over % with dose 1	97.48%	96.99%	97.19%	88.52%	93.35%	93.65%	95.33%	98.13%	96.41%
16 and over % with dose 2	96.08%	95.58%	95.89%	86.52%	91.97%	91.91%	93.68%	96.93%	95.20%
16 and over % with dose 3	69.54%	77.26%	67.59%	68.87%	60.16%	69.97%	69.95%	72.15%	79.39%
30 and over - dose 1	15,733,424	274,155	4,971,828	126,857	3,035,867	1,095,365	352,791	4,045,643	1,651,375
30 and over - dose 2	15,541,330	270,636	4,913,787	124,673	2,999,621	1,079,684	347,986	4,001,580	1,634,180
30 and over - dose 3	12,143,420	231,382	3,751,863	104,960	2,176,783	880,470	281,783	3,184,598	1,432,921
30 and over - dose 4	5,395,647	119,071	1,719,143	28,900	1,025,549	423,067	144,181	1,346,071	558,371
30 and over - population	16,012,407	268,806	5,065,001	140,954	3,219,394	1,157,853	368,927	4,079,079	1,709,089
30 and over % with dose 1	98.26%	>99%	98.16%	90.00%	94.30%	94.60%	95.63%	>99%	96.62%
30 and over % with dose 2	97.06%	>99%	97.01%	88.45%	93.17%	93.25%	94.32%	98.10%	95.62%
30 and over % with dose 3	75.84%	86.08%	74.07%	74.46%	67.61%	76.04%	76.38%	78.07%	83.84%
30 and over % with dose 4	33.70%	44.30%	33.94%	20.50%	31.86%	36.54%	39.08%	33.00%	32.67%
65 and over - dose 1	4,392,976	64,642	1,420,156	20,533	854,033	350,347	114,888	1,096,744	432,204
65 and over - dose 2	4,354,182	63,848	1,407,637	20,273	847,743	347,678	114,192	1,086,452	429,189
65 and over - dose 3	4,006,677	60,587	1,283,152	18,472	779,391	326,201	107,839	992,173	407,658
65 and over - dose 4	3,054,423	51,171	972,329	12,006	606,640	257,569	86,921	738,265	309,373
65 and over - population	4,313,779	60,463	1,393,416	21,593	864,448	352,458	116,037	1,072,562	431,884
65 and over % with dose 1	>99%	>99%	>99%	95.09%	98.80%	>99%	>99%	>99%	>99%
65 and over % with dose 2	>99%	>99%	>99%	93.89%	98.07%	98.64%	98.41%	>99%	>99%
65 and over % with dose 3	92.88%	>99%	92.09%	85.55%	90.16%	92.55%	92.94%	92.50%	94.39%
65 and over % with dose 4	70.81%	84.63%	69.78%	55.60%	70.18%	73.08%	74.91%	68.83%	71.63%

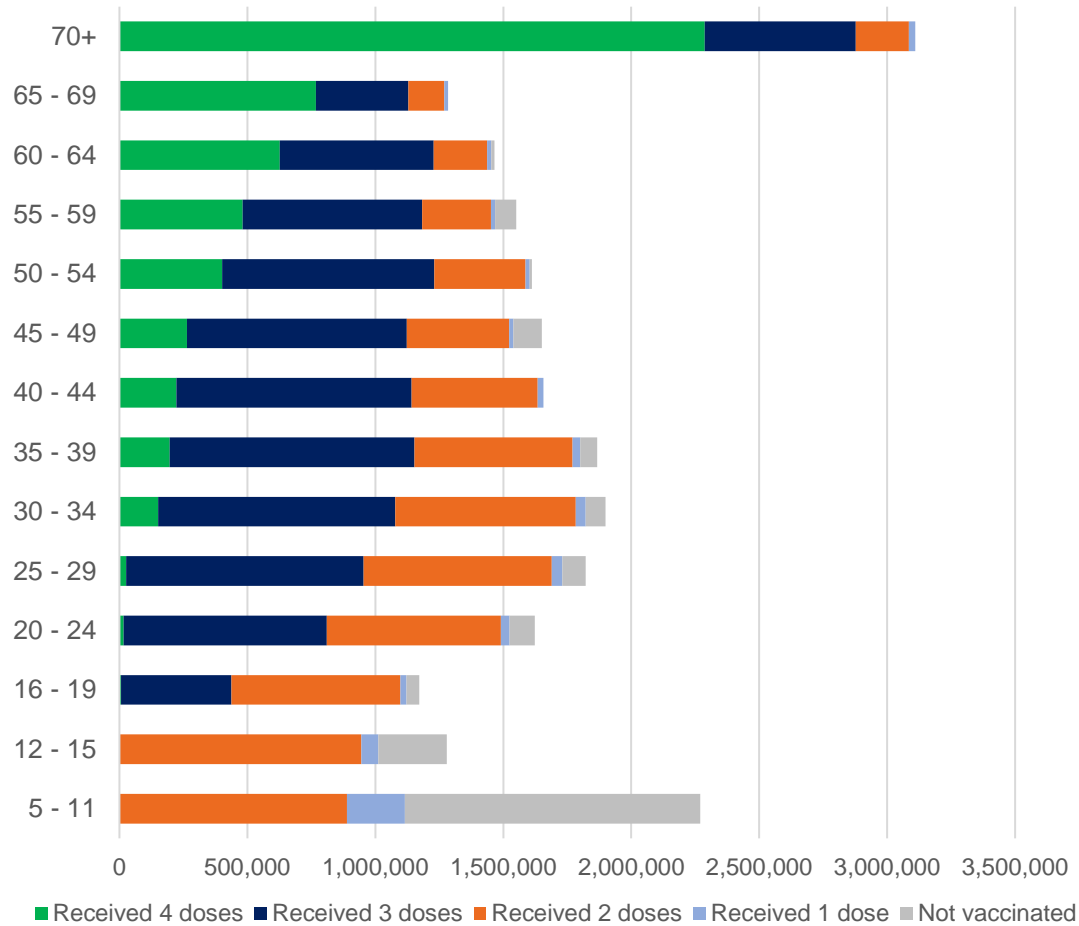
*National population will not equal sum of listed jurisdictions due to a small number of people counted in national population residing in some 'other' territories. Sum of state doses will not add to national total as some records are unable to be geocoded to a State or Territory.

Doses sourced from Australian Immunisation Register, population from ABS ERP June 2021

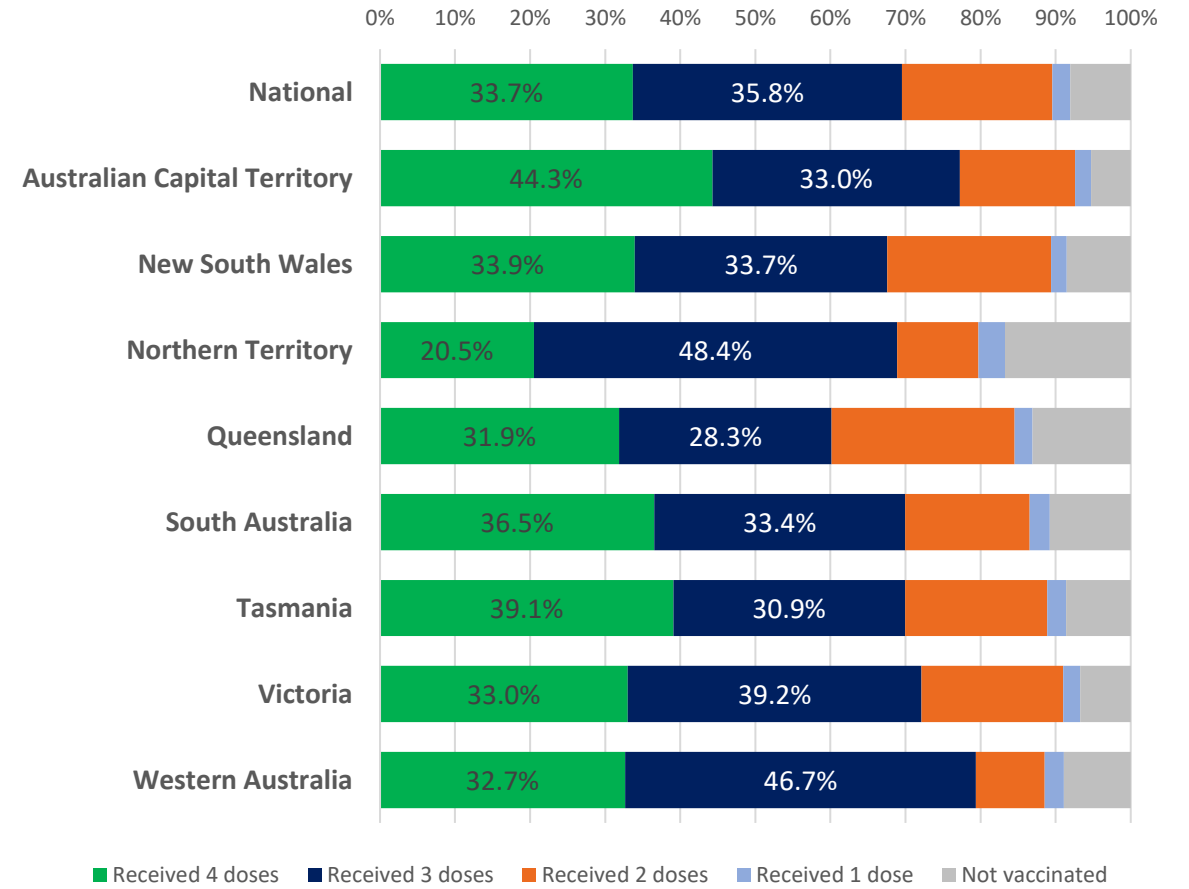
Vaccinations by age and location

Data as at:
01 Feb 2023
Updated weekly

Number of people vaccinated by age

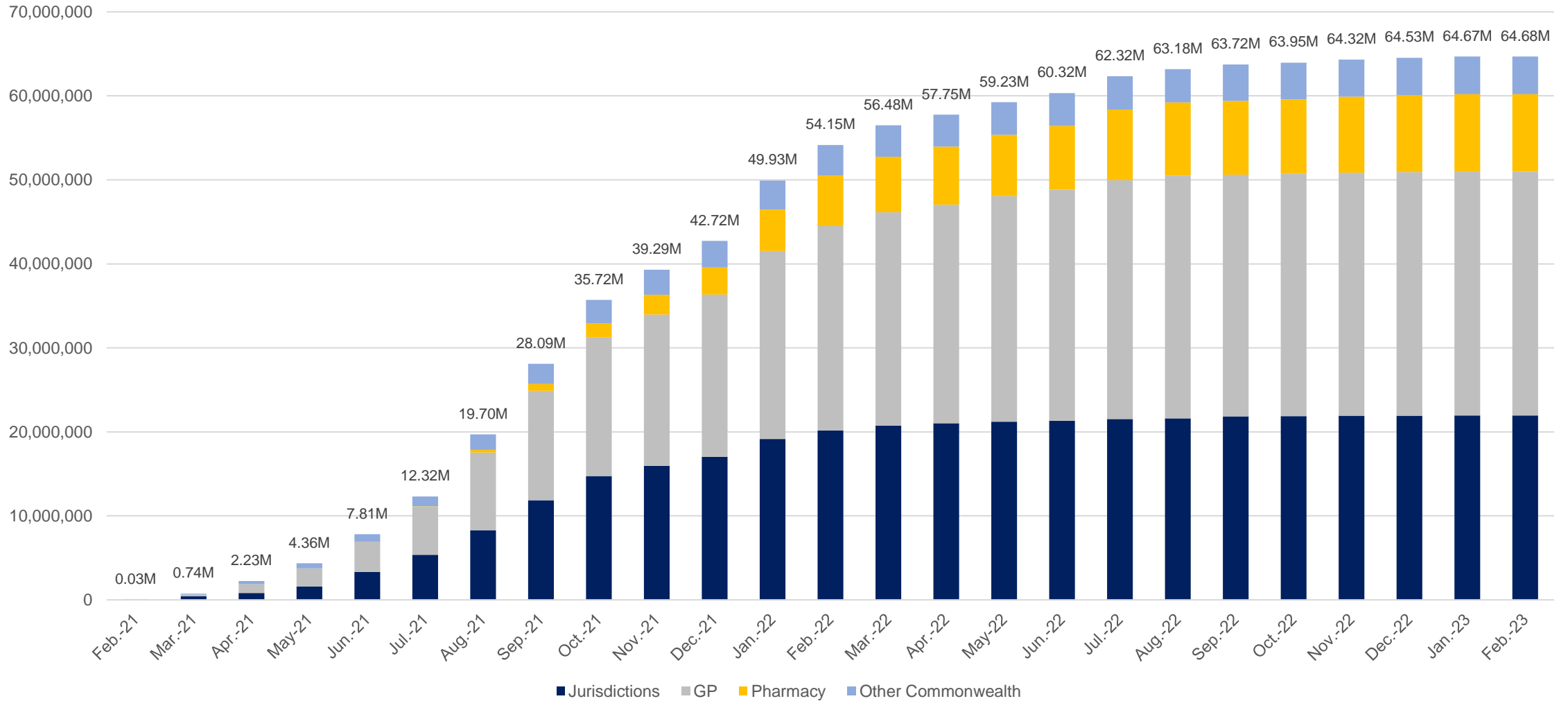


Individuals vaccinated by residential location



Data as at:
01 Feb 2023
Updated weekly

Cumulative doses administered by channel



Source: Australian Immunisation Register

Data as at:
01 Feb 2023
Updated weekly

Commonwealth primary care



Primary care vaccine administration sites#

4,747

GPs

181

ACCHS

3,019

Pharmacies



41,378,193 total vaccine doses administered
in primary care settings

+20,936 weekly increase

Primary care vaccinations by provider type

	Doses administered	Weekly increase
General Practice*	32,070,301	10,493
Pharmacy	9,307,892	10,443

NSW
14,211,466
(+6,650 weekly increase)

VIC
10,250,418
(+6,009 weekly increase)

QLD
8,009,093
(+5,726 weekly increase)

WA
4,279,686
(+2,327 weekly increase)

TAS
799,787
(+543 weekly increase)

SA
2,529,542
(+2,027 weekly increase)

ACT
687,011
(+567 weekly increase)

NT
239,149
(<10 weekly increase)

372,041

doses administered to persons residing in other territories or with missing residential information

*General practice includes Aboriginal Community Health Centres, Royal Flying Doctor Service and other Commonwealth vaccination facilities

#Primary care site numbers are based on the number of sites participating in the rollout as at 30 January 2023.

Source: Australian Immunisation Register

Aboriginal and Torres Strait Islander peoples

Number of people vaccinated

Data as at:
01 Feb 2023
Updated weekly

Australia's COVID-19
Vaccine Program



People (16+) with at least one dose
452,089 85.5%

People (16+) with at least two doses
434,869 82.3%



Eligible people (16+) with three doses
245,582 56.6%

Eligible people (30+) with four doses
65,788 35.2%



People (12-15) with at least one dose
45,230 64.3%

People (12-15) with at least two doses
38,860 55.3%

123 Aboriginal community controlled health services (ACCHS) sites

1	27	21	36	13	2	8	15
ACT	NSW	NT	QLD	SA	TAS	VIC	WA

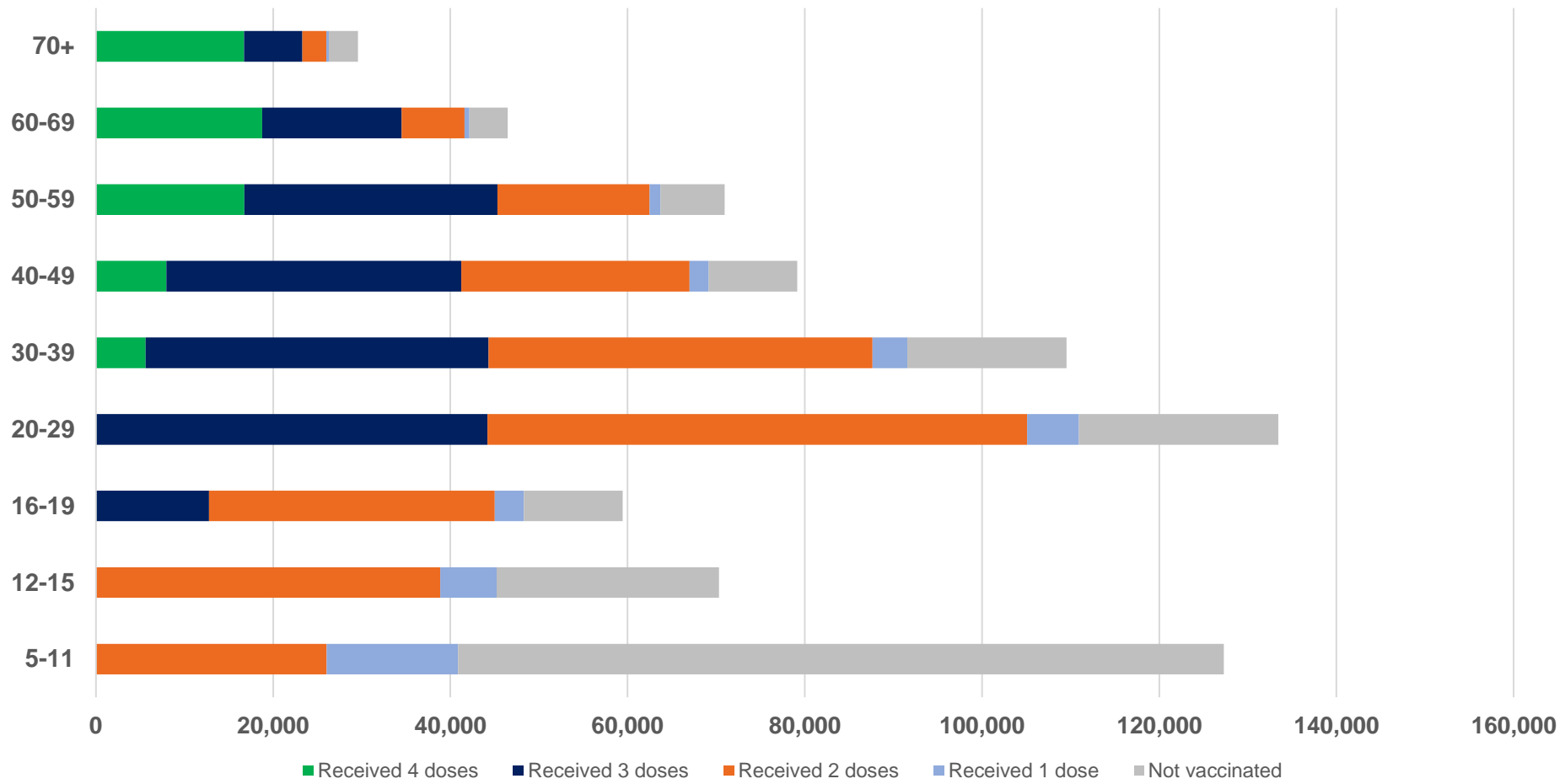
Residential State	Individuals Dose 1 % (16+)	Individuals Dose 2 % (16+)	Individuals Dose 3 % Eligible (aged 16+)	Individuals Dose 4 % Eligible (aged 30+)
ACT	92.3%	90.2%	65.6%	43.0%
NSW	87.9%	86.0%	53.2%	38.0%
NT	90.2%	86.3%	70.4%	26.5%
QLD	82.4%	78.9%	49.2%	37.8%
SA	81.3%	76.3%	61.1%	38.6%
TAS	89.3%	86.9%	60.1%	42.2%
VIC	90.9%	89.0%	62.6%	36.6%
WA	87.6%	82.3%	66.4%	30.0%
Unknown/Other Territories	72.9%	67.9%	51.3%	24.6%
National Coverage %	85.5%	82.3%	56.6%	35.2%
Number with a Dose	452,089	434,869	245,582	65,788
Total / Eligible Population	528,608	528,608	434,229	186,969

Identifying as Aboriginal and Torres Strait Islander is optional and the estimated population may be under reported. Numbers include all Aboriginal and Torres Strait Islander peoples who have received a vaccination, and are not limited to those administered in an ACCHS setting. The total population refers to the number of individuals that identify as Aboriginal and Torres Strait Islander in the Australian Immunisation Register, while the eligible population refers to the number of these individuals who meet the criteria for a further dose (based on completion of previous doses, age, and time period elapsed since last dose). Please note there may be people under 30 who are eligible, but these are not included in coverage rates or population to protect privacy.

Aboriginal and Torres Strait Islander peoples

Number of people vaccinated by age

Data as at:
01 Feb 2023
Updated weekly



Source: Australian Immunisation Register

Individuals with Culturally and Linguistically Diverse (CALD) backgrounds data

Data as at:
22 January 2023
Updated weekly

Australia's COVID-19
Vaccine Program

People over the age of 16

CALD population *	Total number of individuals in cohort	% People with at least one dose	% People who received two doses	% of eligible people who received three or more doses
General population	20,629,070	>95.0%	>95.0%	72.4%
People born overseas	4,296,614	94.6%	94.0%	73.6%
Speaks a language other than English at home	3,982,991	94.1%	93.5%	69.5%

	General population			Born Overseas			Speaks a language other than English at home		
	% with at least one dose	% who received two doses	% of eligible people who received three or more doses	% with at least one dose	% who received two doses	% of eligible people who received three or more doses	% with at least one dose	% who received two doses	% of eligible people who received three or more doses
ACT	>95.0%	>95.0%	80.9%	>95.0%	>95.0%	79.4%	>95.0%	>95.0%	76.7%
NSW	>95.0%	>95.0%	70.5%	94.9%	94.4%	71.1%	94.1%	93.5%	66.4%
NT	88.6%	86.6%	79.7%	>95.0%	94.7%	88.4%	94.0%	93.6%	87.0%
Qld	93.3%	91.9%	65.4%	92.2%	91.6%	68.2%	92.5%	91.8%	64.9%
SA	93.6%	91.9%	76.2%	92.8%	91.9%	75.8%	91.8%	90.8%	72.0%
Tas	>95.0%	93.7%	74.7%	93.3%	92.7%	76.8%	93.2%	92.6%	72.8%
Vic	>95.0%	>95.0%	74.5%	>95.0%	94.8%	73.8%	94.7%	94.2%	69.8%
WA	>95.0%	>95.0%	83.4%	>95.0%	94.6%	85.7%	>95.0%	94.7%	83.7%

*Individuals with Culturally and Linguistically Diverse (CALD) backgrounds are as reported in the 2021 Census, excluding those who have since departed Australia; deceased persons; those born in the UK, Ireland or NZ; and Aboriginal and/or Torres Strait Islander peoples. There is overlap across CALD cohorts where individuals may have reported they had more than one CALD characteristic in the 2021 Census.

Small negative changes may appear when compared with the previous report due to perturbation, data maturity and changes in population sizes.

Source: Australian Immunisation Register linked to the Multi-Agency Data Integration Project (Census 2021 characteristics). Coverage rates for the general population are as published for 24 January 2023.

Data as at:
02 February 2023
Updated weekly

Residential aged care vaccination rollout



170,588

Aged care residents with at least one dose



169,326

Aged care residents with at least two doses



163,257

Aged care residents with at least three doses



135,060

Aged care residents with at least four doses



>99%

Aged care workers with at least two doses nationally

Aged care resident vaccinations

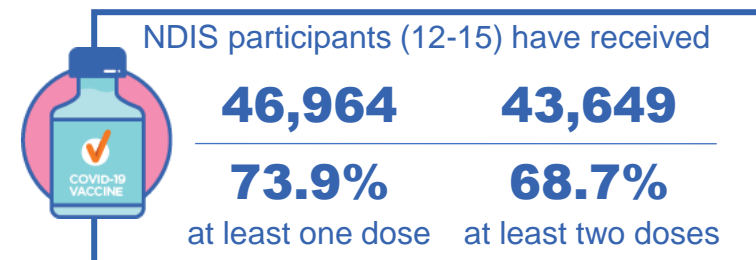
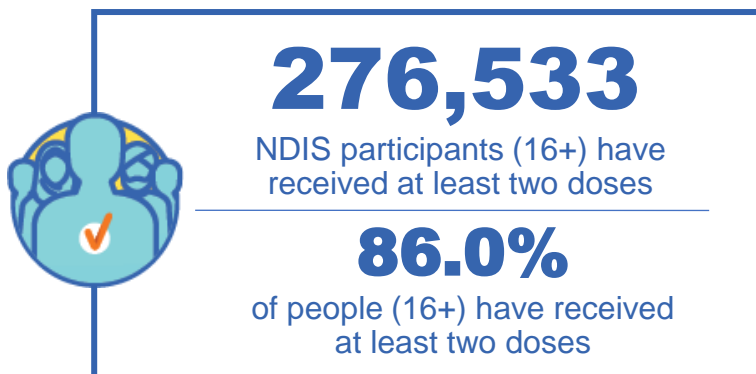
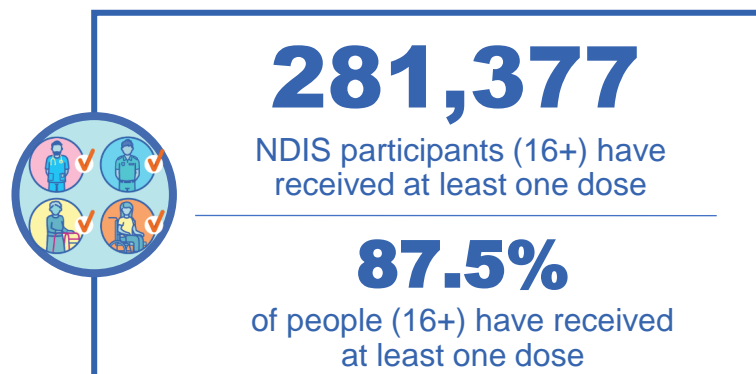
	Aged care residents with at least one dose	Aged care residents with at least two doses	Aged care residents with at least three doses	Aged care residents with at least four doses
NSW	97.0%	96.3%	92.7%	75.3%
VIC	96.9%	96.4%	93.5%	80.6%
QLD	95.1%	94.4%	90.6%	73.6%
SA	96.0%	94.8%	91.3%	75.2%
WA	96.9%	96.1%	92.3%	74.6%
TAS	96.0%	95.1%	92.1%	77.3%
NT	96.9%	95.1%	90.7%	73.3%
ACT	98.0%	97.5%	95.1%	83.1%
National	96.5%	95.8%	92.3%	76.4%

Source: Residential aged care provider self-reported COVID-19 vaccination information and matched AIR data of residents in permanent residential RACFs.

National Disability Insurance Scheme (NDIS) reported vaccinations

Data as at:
29 Jan 2023
Updated weekly

Australia's COVID-19
Vaccine Program



NDIS participant vaccinations

	% People aged 16+ with at least one dose	% People aged 16+ with at least two doses	% People aged 16+ with three doses	% People aged 16+ with four doses
ACT	90.0%	88.9%	83.4%	39.8%
NSW	87.9%	86.6%	74.9%	35.7%
NT	78.2%	76.0%	78.7%	27.9%
QLD	85.5%	83.9%	70.9%	30.0%
SA	85.5%	83.6%	77.7%	31.7%
TAS	87.6%	85.8%	76.2%	32.5%
VIC	88.7%	87.3%	77.0%	33.5%
WA	88.9%	87.3%	81.6%	33.9%
National	87.5%	86.0%	75.8%	33.4%

Source: Linkage between National Disability Insurance Agency data and the Australian Immunisation Register. 'Total' NDIS Participant number last obtained as at 21 January 2023. Australian Immunisation Register data as at 29 January 2023. Includes all participants regardless of residence type.

Explanatory Notes

The Australian Immunisation Register (AIR). The Australian Immunisation Register is a national register that records all vaccines given to all people in Australia.

People received at least x dose/s. The count of unique people who have received at least x dose/s of a COVID-19 vaccine. People with at least x dose/s encompasses people who received x dose/s or more. Please note, to capture a person's current level of protection, this methodology includes any doses an individual received overseas where they have been uploaded into the Australian Immunisation Register, and where the vaccine brand is recognised by the TGA. Some people may not be included in this count where they are viewed as no longer in scope of the vaccination rollout (for example, where a person has permanently left Australia, or they have passed away).

Coverage calculations. First and second dose rates are calculated by taking the number of unique people who have received the corresponding dose from the Australian Immunisation Register and dividing this by the Australian Bureau of Statistics Estimated Residential Population (2021). For doses that are third in sequence or above, the coverage rates often refer to the *eligible* population – that is, the number of people with the dose over the number of people who meet the criteria for that dose in the Australian Immunisation Register. Vaccine coverage uses the state of residence (based on a person's Medicare address).

Eligible population. Eligible population refers to the number of these individuals who meet the criteria for a given dose based on completion of previous doses, age, and time period elapsed since last dose. Please note that the Australian Immunisation Register cannot identify immunocompromised individuals.

Vaccine doses administered. The total number of COVID-19 doses administered refers to the number of doses administered rather than the number of people who have received a COVID-19 vaccine. In most cases (unless otherwise specified) all doses are included (regardless of age of recipient or the dose number), and when these numbers are provided by state, it is typically the state that the dose was physically administered in as opposed to the state where the person resides on a usual basis.

Aboriginal and Torres Strait Islander Peoples. The Aboriginal and Torres Strait Islander population refers to the number of individuals that identify as Aboriginal and Torres Strait Islander in the Australian Immunisation Register. Identifying as Aboriginal and Torres Strait Islander is optional, and the estimated population may be under reported. Numbers include all Aboriginal and Torres Strait Islander peoples who have received a vaccination and are not limited to those administered in an ACCHS setting.

Update Information: Vaccine data is sourced from the Australian Immunisation Register as at 11:59pm 01 February 2023 unless otherwise noted.