



Australian Government
Department of Health and Aged Care

COVID-19 Vaccine Roll-out

16 February 2023

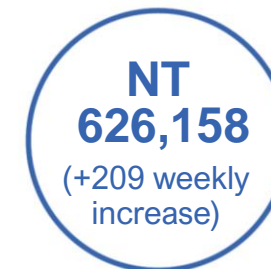
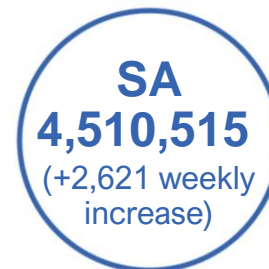
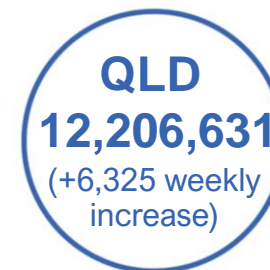
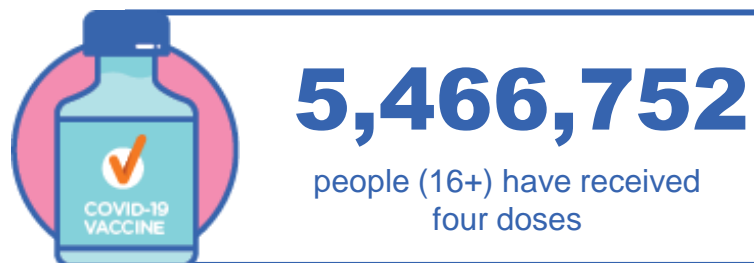
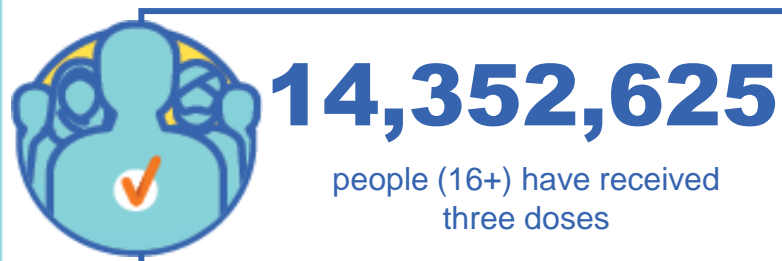
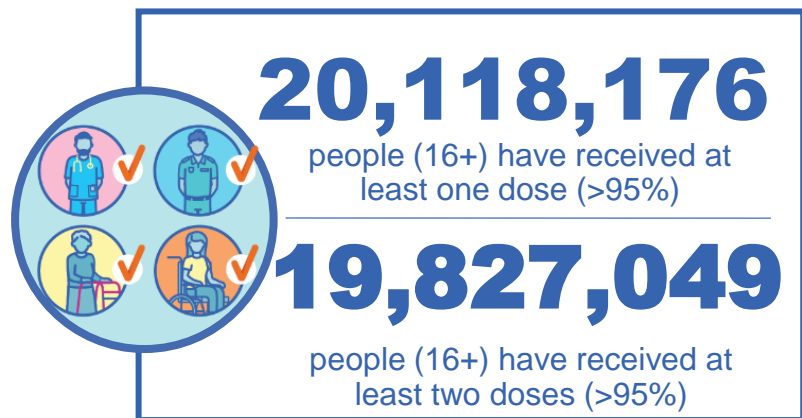
Data as at:
15 Feb 2023
Updated weekly

Total vaccine doses



64,750,805 total vaccine
doses administered

+41,873 weekly increase

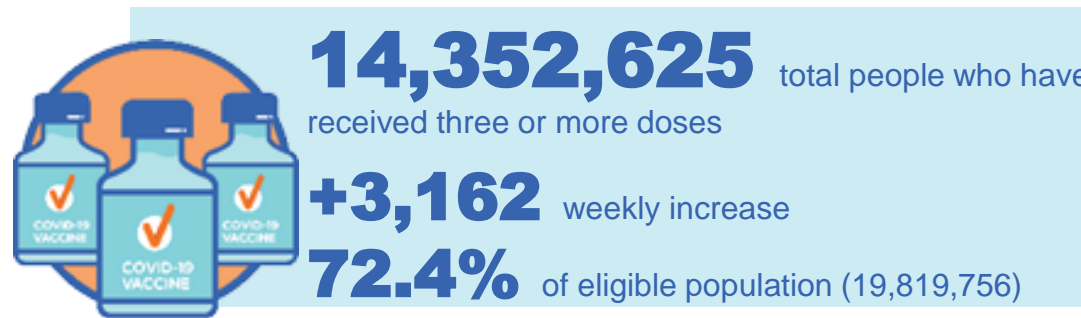
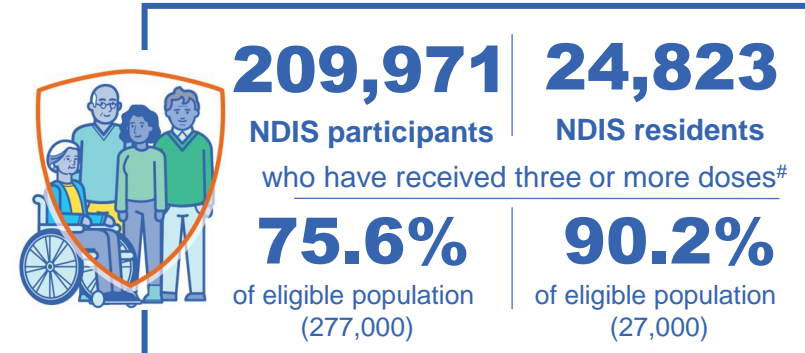
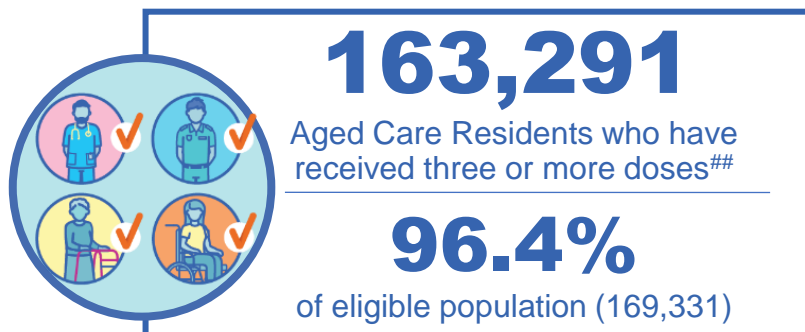
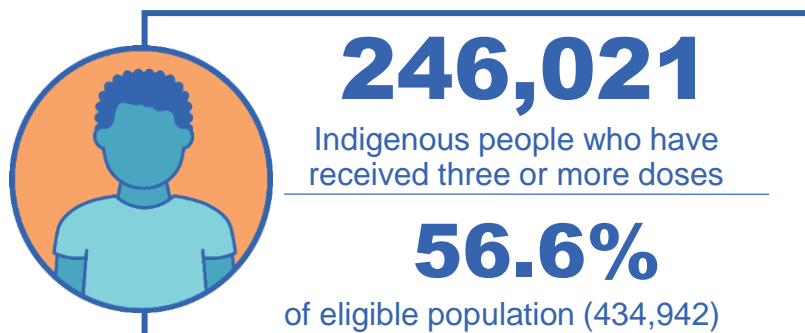


*Administration state breakdown indicates state in which a vaccine was administered

Third Doses

Australia's COVID-19
Vaccine Program

Data as at:
15 Feb 2023##
Updated weekly



	Number of People	Weekly Increase	% of Eligible
ACT	281,850	<10	80.9%
NSW	4,398,475	1,116	70.5%
NT	133,018	15	79.6%
QLD	2,505,846	1,271	65.5%
SA	1,029,898	255	76.2%
TAS	325,642	28	74.7%
VIC	3,811,209	1,192	74.5%
WA	1,736,268	461	83.4%

*People may belong to multiple groups and could be represented in the above breakdowns multiple times.
#NDIS participants data as at 12 February 2023. ##Aged Care Residents data as at 16 February 2023.

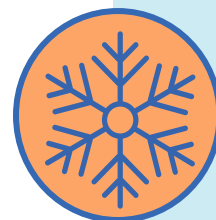
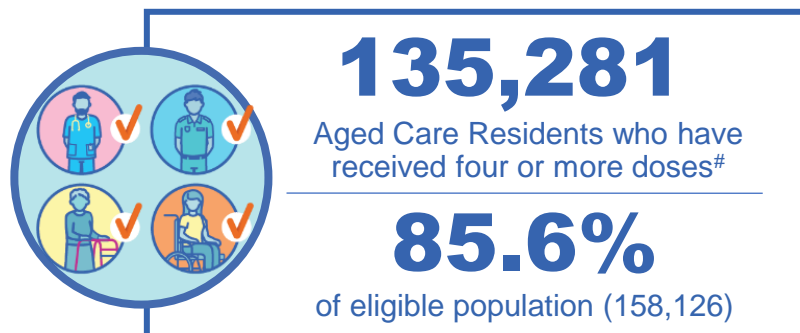
Source: Australian Immunisation Register

130,419 doses administered to persons
residing in other territories or with
missing residential information

Fourth Doses

Data as at:
15 Feb 2023#
Updated weekly

Australia's COVID-19
Vaccine Program



5,466,752
+11,803
44.8%
3,061,943
76.4%

total people (16+) who have received four doses

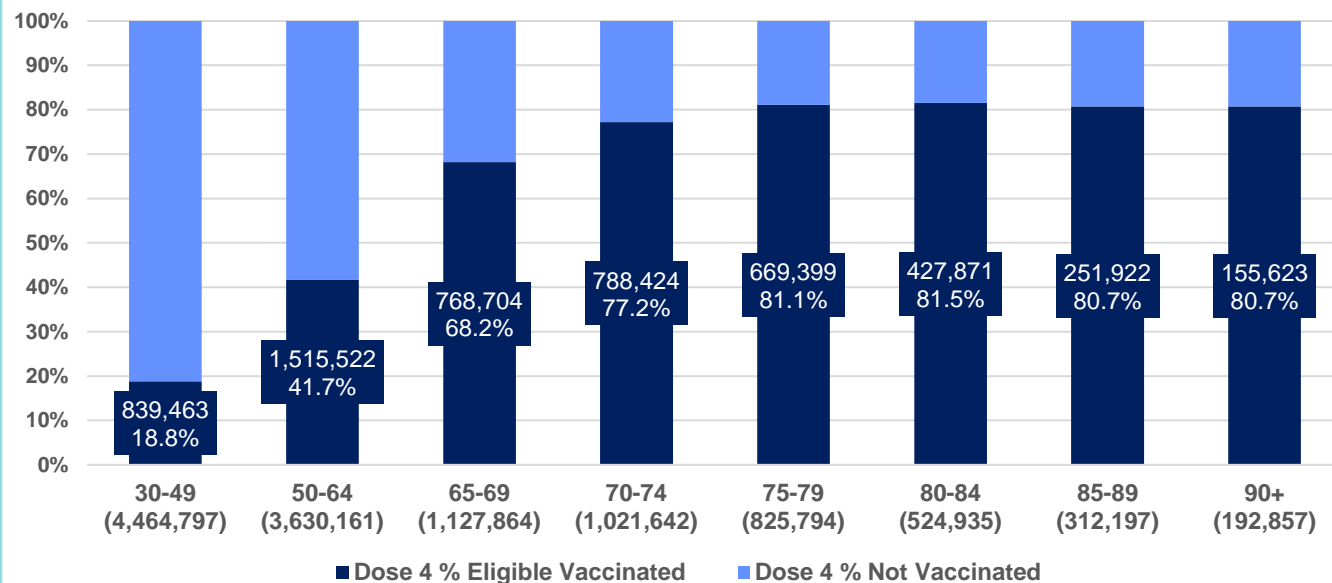
weekly increase (16+)

of eligible population (30+) (12,100,247)

total people (65+) who have received four doses

of eligible population (65+) (4,005,289)

% Individuals eligible vaccinated by current age



	Number of People 16+	Weekly Increase
ACT	121,342	349
NSW	1,743,346	3,693
NT	29,765	115
QLD	1,036,679	1,949
SA	426,892	804
TAS	145,718	235
VIC	1,366,247	3,472
WA	565,281	1,484

31,482

doses administered to persons
residing in other territories or with
missing residential information

*People become eligible for a fourth dose three months after their third dose. Individuals may belong to multiple groups and could be represented in the above multiple times.

#Aged Care Residents data as at 16 February 2023.

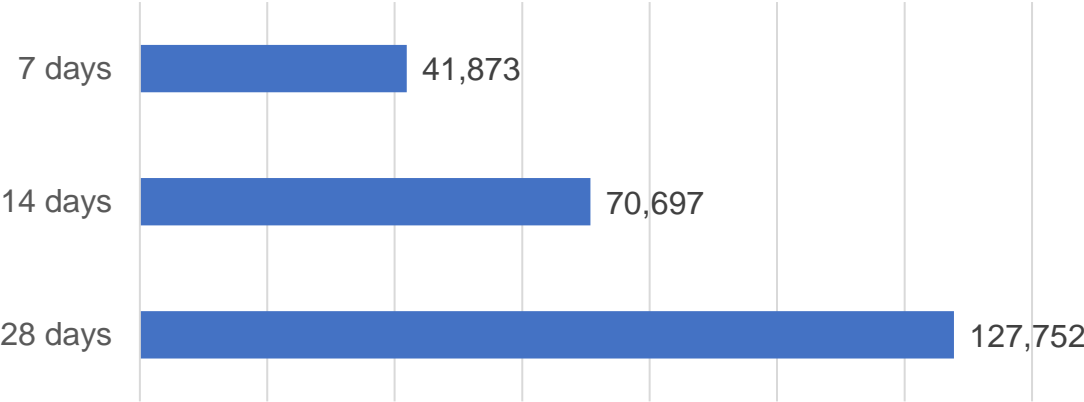
Source: Australian Immunisation Register

Vaccine milestone charts

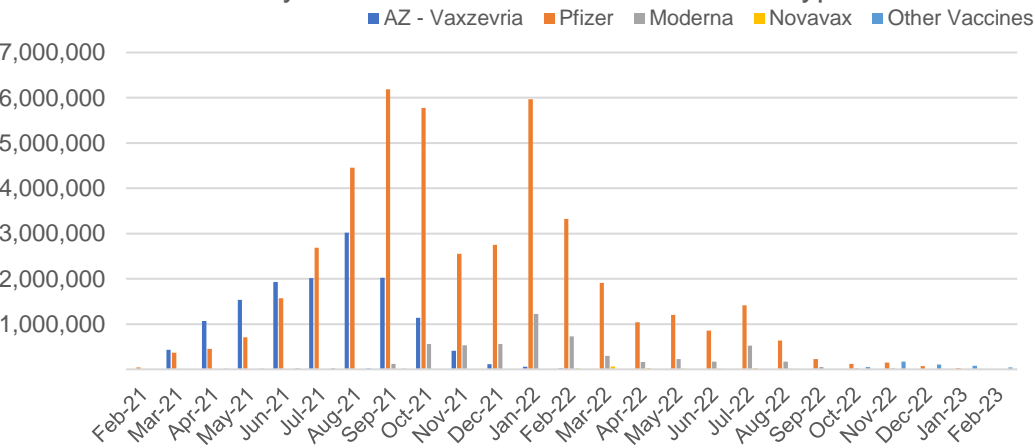
Australia's COVID-19
Vaccine Program

Data as at:
15 Feb 2023
Updated weekly

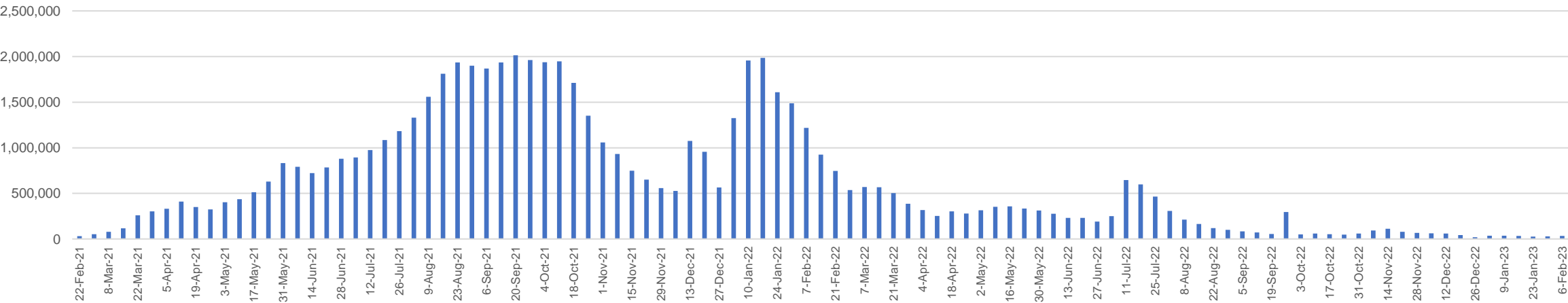
Doses Reported



Doses by administration month and vaccine type



Doses Administered by Week



*Sourced from the Australian Immunisation Register.

Data as at:
15 Feb 2023
Updated weekly

Doses by age and jurisdiction

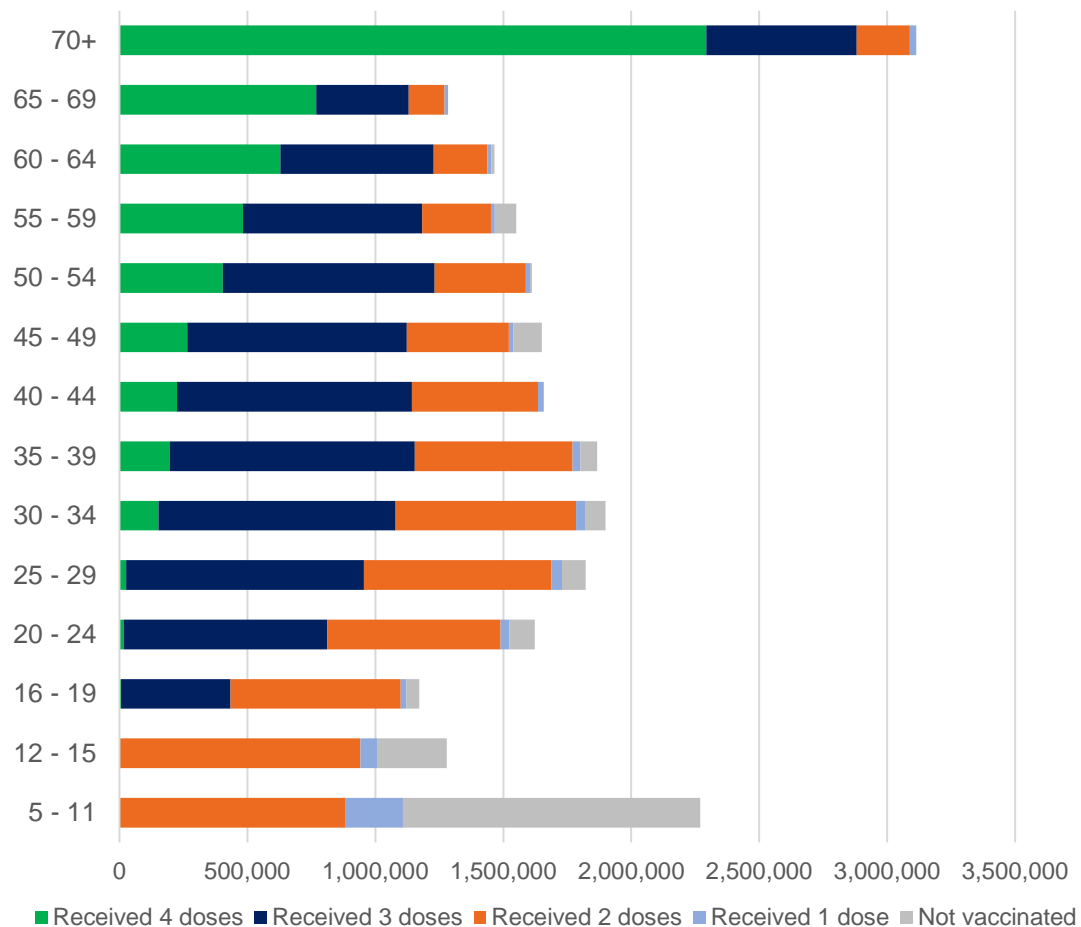
	AUS	ACT	NSW	NT	QLD	SA	TAS	VIC	WA
5 to 11 - dose 1	1,108,378	29,933	332,769	11,555	190,739	77,329	26,120	301,797	128,892
5 to 11 - dose 2	884,289	26,697	274,221	8,306	146,898	62,239	21,849	239,965	99,182
5 to 11 - population	2,269,663	40,719	711,525	25,120	476,567	149,048	45,549	568,488	252,235
5 to 11 % with dose 1	48.83%	73.51%	46.77%	46.00%	40.02%	51.88%	57.34%	53.09%	51.10%
5 to 11 % with dose 2	38.96%	65.56%	38.54%	33.07%	30.82%	41.76%	47.97%	42.21%	39.32%
12 to 15 - dose 1	1,009,107	20,029	309,407	10,109	196,013	66,029	22,007	263,283	112,077
12 to 15 - dose 2	941,608	19,363	292,609	8,978	180,256	61,564	20,628	247,924	102,075
12 to 15 - population	1,279,387	20,888	399,352	13,190	278,225	85,541	27,469	313,711	140,783
12 to 15 % with dose 1	78.87%	95.89%	77.48%	76.64%	70.45%	77.19%	80.12%	83.93%	79.61%
12 to 15 % with dose 2	73.60%	92.70%	73.27%	68.07%	64.79%	71.97%	75.10%	79.03%	72.51%
16 and over - dose 1	20,118,176	353,874	6,323,795	171,040	3,887,783	1,378,506	443,868	5,183,267	2,109,324
16 and over - dose 2	19,827,049	348,731	6,238,642	167,174	3,830,083	1,352,768	436,173	5,119,444	2,082,686
16 and over - dose 3	14,352,625	281,850	4,398,475	133,018	2,505,846	1,029,898	325,642	3,811,209	1,736,268
16 and over - population	20,629,070	364,811	6,504,442	193,211	4,161,009	1,471,062	465,436	5,279,175	2,185,967
16 and over % with dose 1	97.52%	97.00%	97.22%	88.52%	93.43%	93.71%	95.37%	98.18%	96.49%
16 and over % with dose 2	96.11%	95.59%	95.91%	86.52%	92.05%	91.96%	93.71%	96.97%	95.28%
16 and over % with dose 3	69.57%	77.26%	67.62%	68.85%	60.22%	70.01%	69.96%	72.19%	79.43%
30 and over - dose 1	15,743,277	274,288	4,974,637	126,921	3,039,127	1,096,064	353,003	4,048,850	1,652,998
30 and over - dose 2	15,550,230	270,773	4,916,282	124,725	3,002,730	1,080,330	348,169	4,004,441	1,635,743
30 and over - dose 3	12,151,910	231,490	3,754,241	104,988	2,179,188	881,102	281,908	3,187,424	1,434,283
30 and over - dose 4	5,416,928	119,741	1,726,118	29,146	1,029,114	424,337	144,644	1,352,092	560,859
30 and over - population	16,012,407	268,806	5,065,001	140,954	3,219,394	1,157,853	368,927	4,079,079	1,709,089
30 and over % with dose 1	98.32%	>99%	98.22%	90.04%	94.40%	94.66%	95.68%	>99%	96.72%
30 and over % with dose 2	97.11%	>99%	97.06%	88.49%	93.27%	93.30%	94.37%	98.17%	95.71%
30 and over % with dose 3	75.89%	86.12%	74.12%	74.48%	67.69%	76.10%	76.41%	78.14%	83.92%
30 and over % with dose 4	33.83%	44.55%	34.08%	20.68%	31.97%	36.65%	39.21%	33.15%	32.82%
65 and over - dose 1	4,398,412	64,736	1,422,018	20,571	855,445	350,757	115,029	1,098,269	432,798
65 and over - dose 2	4,359,336	63,943	1,409,371	20,309	849,143	348,081	114,330	1,087,863	429,768
65 and over - dose 3	4,011,418	60,678	1,284,685	18,508	780,630	326,592	107,989	993,483	408,224
65 and over - dose 4	3,061,943	51,352	974,981	12,050	608,101	258,081	87,130	740,308	310,160
65 and over - population	4,313,779	60,463	1,393,416	21,593	864,448	352,458	116,037	1,072,562	431,884
65 and over % with dose 1	>99%	>99%	>99%	95.27%	98.96%	>99%	>99%	>99%	>99%
65 and over % with dose 2	>99%	>99%	>99%	94.05%	98.23%	98.76%	98.53%	>99%	>99%
65 and over % with dose 3	92.99%	>99%	92.20%	85.71%	90.30%	92.66%	93.06%	92.63%	94.52%
65 and over % with dose 4	70.98%	84.93%	69.97%	55.81%	70.35%	73.22%	75.09%	69.02%	71.82%

*National population will not equal sum of listed jurisdictions due to a small number of people counted in national population residing in some 'other' territories. Sum of state doses will not add to national total as some records are unable to be geocoded to a State or Territory.

Doses sourced from Australian Immunisation Register, population from ABS ERP June 2021

Vaccinations by age and location

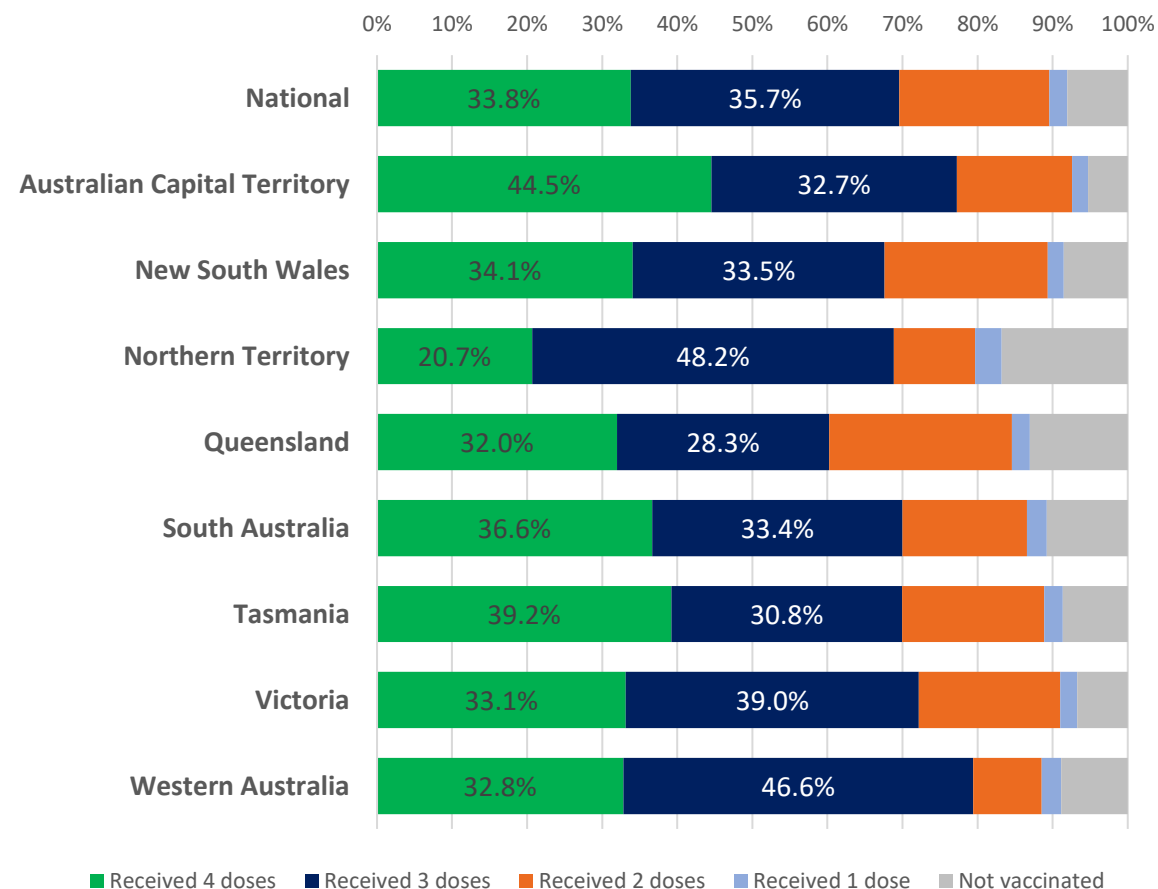
Number of people vaccinated by age



Data as at:
15 Feb 2023
Updated weekly

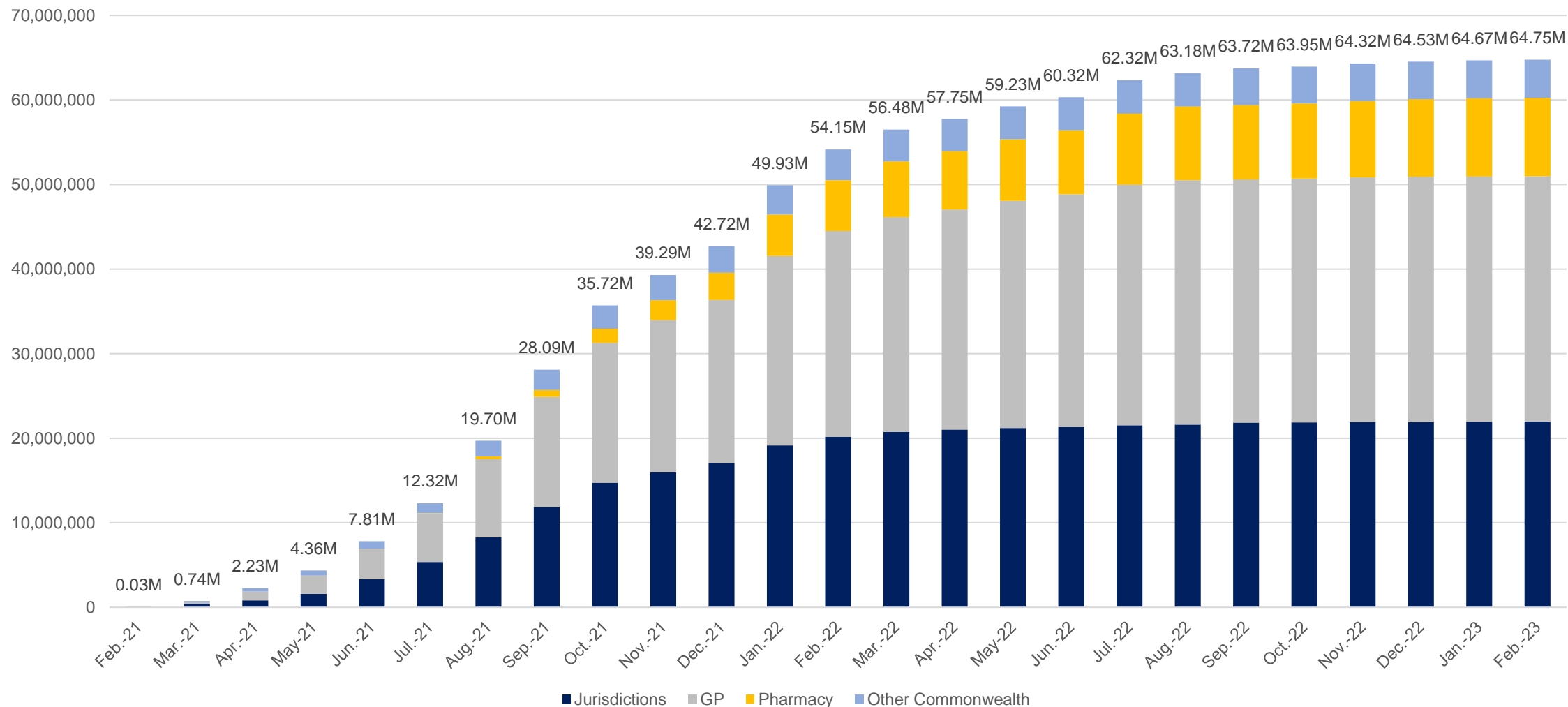
Australia's COVID-19
Vaccine Program

Individuals vaccinated by residential location



Cumulative doses administered by channel

Data as at:
15 Feb 2023
Updated weekly



Source: Australian Immunisation Register

Commonwealth primary care

Data as at:
15 Feb 2023
Updated weekly

Australia's COVID-19
Vaccine Program



Primary care vaccine administration sites#

4,675

GPs

179

ACCHS

2,996

Pharmacies



41,440,482 total vaccine doses administered
in primary care settings

+37,404 weekly increase

Primary care vaccinations by provider type

	Doses administered	Weekly increase
General Practice*	32,103,096	19,364
Pharmacy	9,337,386	18,040

NSW
14,231,361
(+12,317
weekly
increase)

VIC
10,267,860
(+11,093
weekly
increase)

QLD
8,023,317
(+8,000
weekly
increase)

WA
4,286,730
(+4,389
weekly
increase)

TAS
801,400
(+864
weekly
increase)

SA
2,534,145
(+2,787
weekly
increase)

ACT
688,522
(+851
weekly
increase)

NT
239,537
(+315
weekly
increase)

367,610

doses administered to persons
residing in other territories or with
missing residential information

*General practice includes Aboriginal Community Health Centres, Royal Flying Doctor Service and other Commonwealth vaccination facilities

#Primary care site numbers are based on the number of sites participating in the rollout as at 13 February 2023.

Source: Australian Immunisation Register

Aboriginal and Torres Strait Islander peoples

Number of people vaccinated

Data as at:
15 Feb 2023
Updated weekly

Australia's COVID-19
Vaccine Program



People (16+) with at least one dose

452,758 85.5%

People (16+) with at least two doses

435,506 82.3%



Eligible people (16+) with three doses

246,021 56.6%

Eligible people (30+) with four doses

66,183 35.3%



People (12-15) with at least one dose

45,013 64.1%

People (12-15) with at least two doses

38,597 54.9%

120 Aboriginal community controlled health services (ACCHS) sites

1 ACT	24 NSW	21 NT	36 QLD	12 SA	2 TAS	8 VIC	16 WA
----------	-----------	----------	-----------	----------	----------	----------	----------

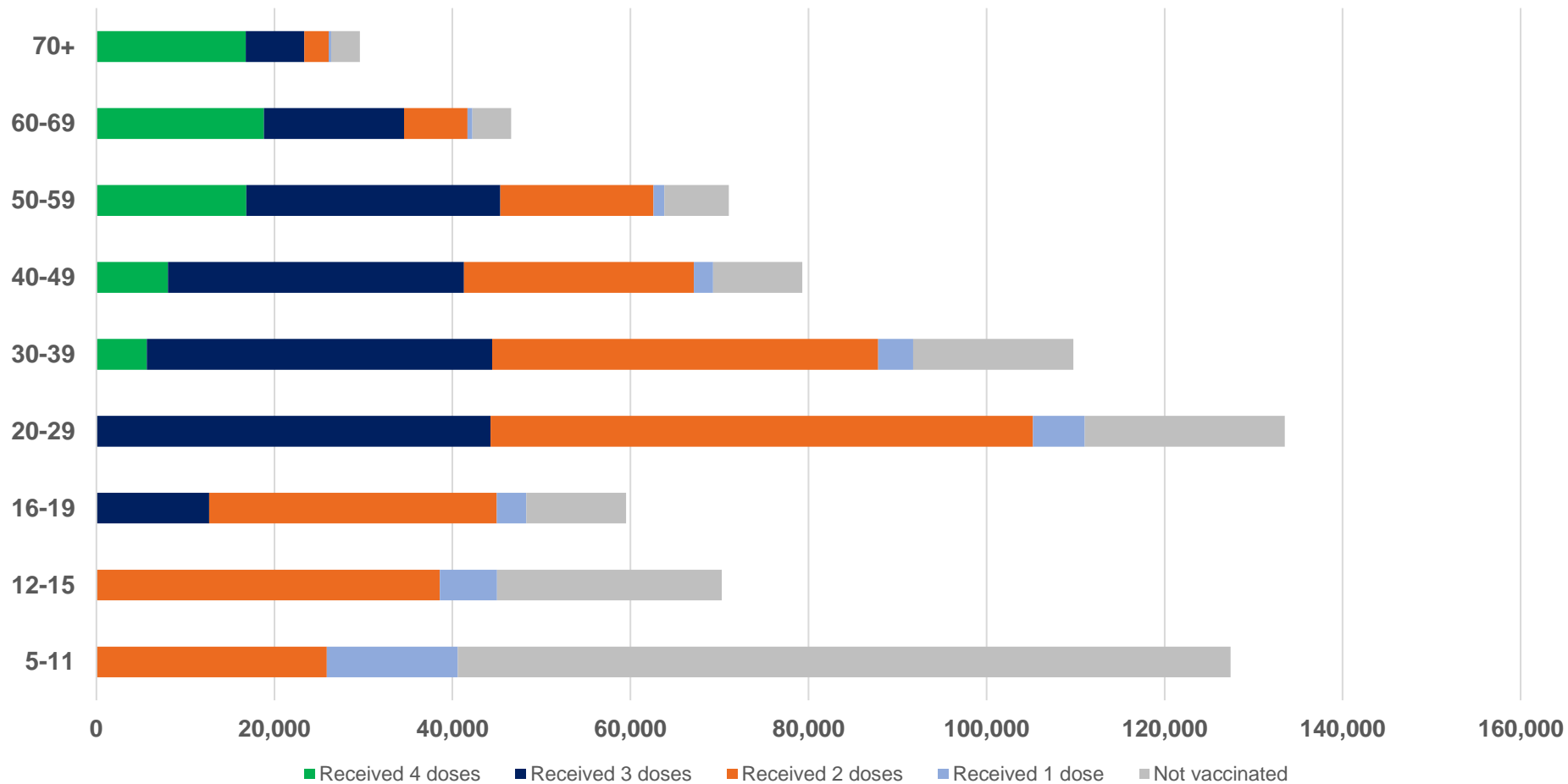
Residential State	Individuals Dose 1 % (16+)	Individuals Dose 2 % (16+)	Individuals Dose 3 % Eligible (aged 16+)	Individuals Dose 4 % Eligible (aged 30+)
ACT	92.3%	90.2%	65.7%	43.0%
NSW	87.9%	86.1%	53.2%	38.0%
NT	90.3%	86.3%	70.4%	26.6%
QLD	82.4%	78.9%	49.2%	37.8%
SA	81.3%	76.2%	61.1%	38.7%
TAS	89.2%	86.9%	60.1%	42.3%
VIC	90.9%	89.0%	62.6%	36.7%
WA	87.6%	82.3%	66.4%	30.2%
Unknown/Other Territories	72.9%	67.9%	51.4%	24.8%
National Coverage %	85.5%	82.3%	56.6%	35.3%
Number with a Dose	452,758	435,506	246,021	66,183
Total / Eligible Population	529,354	529,354	434,942	187,653

Identifying as Aboriginal and Torres Strait Islander is optional and the estimated population may be under reported. Numbers include all Aboriginal and Torres Strait Islander peoples who have received a vaccination, and are not limited to those administered in an ACCHS setting. The total population refers to the number of individuals that identify as Aboriginal and Torres Strait Islander in the Australian Immunisation Register, while the eligible population refers to the number of these individuals who meet the criteria for a further dose (based on completion of previous doses, age, and time period elapsed since last dose). Please note there may be people under 30 who are eligible, but these are not included in coverage rates or population to protect privacy.

Aboriginal and Torres Strait Islander peoples

Number of people vaccinated by age

Data as at:
15 Feb 2023
Updated weekly



Source: Australian Immunisation Register

Individuals with Culturally and Linguistically Diverse (CALD) backgrounds data

Data as at:
5 February 2023
Updated weekly

Australia's COVID-19
Vaccine Program

People over the age of 16

CALD population *	Total number of individuals in cohort	% People with at least one dose	% People who received two doses	% of eligible people who received three or more doses
General population	20,629,070	>95.0%	>95.0%	72.4%
People born overseas	4,296,068	94.5%	94.0%	73.6%
Speaks a language other than English at home	3,984,571	94.1%	93.5%	69.5%

	General population			Born Overseas			Speaks a language other than English at home		
	% with at least one dose	% who received two doses	% of eligible people who received three or more doses	% with at least one dose	% who received two doses	% of eligible people who received three or more doses	% with at least one dose	% who received two doses	% of eligible people who received three or more doses
ACT	>95.0%	>95.0%	80.9%	>95.0%	>95.0%	79.4%	>95.0%	94.9%	76.6%
NSW	>95.0%	>95.0%	70.5%	94.8%	94.4%	71.1%	94.1%	93.5%	66.4%
NT	88.5%	86.5%	79.6%	>95.0%	94.6%	88.3%	93.9%	93.4%	87.0%
Qld	93.4%	92.0%	65.5%	92.2%	91.5%	68.2%	92.5%	91.7%	64.8%
SA	93.7%	91.9%	76.2%	92.8%	91.9%	75.8%	91.7%	90.7%	72.0%
Tas	>95.0%	93.7%	74.7%	93.0%	92.5%	76.7%	92.9%	92.2%	72.8%
Vic	>95.0%	>95.0%	74.5%	>95.0%	94.8%	73.7%	94.7%	94.1%	69.8%
WA	>95.0%	>95.0%	83.4%	>95.0%	94.6%	85.6%	>95.0%	94.6%	83.7%

*Individuals with Culturally and Linguistically Diverse (CALD) backgrounds are as reported in the 2021 Census, excluding those who have since departed Australia; deceased persons; those born in the UK, Ireland or NZ; and Aboriginal and/or Torres Strait Islander peoples. There is overlap across CALD cohorts where individuals may have reported they had more than one CALD characteristic in the 2021 Census.

Small negative changes may appear when compared with the previous report due to perturbation, data maturity and changes in population sizes.

Source: Australian Immunisation Register linked to the Multi-Agency Data Integration Project (Census 2021 characteristics). Coverage rates for the general population are as published for 8 February 2023.

Data as at:
16 February 2023
Updated weekly

Residential aged care vaccination rollout



170,589

Aged care residents with at least one dose



169,331

Aged care residents with at least two doses



163,291

Aged care residents with at least three doses



135,281

Aged care residents with at least four doses



>99%

Aged care workers with at least two doses nationally

Aged care resident vaccinations

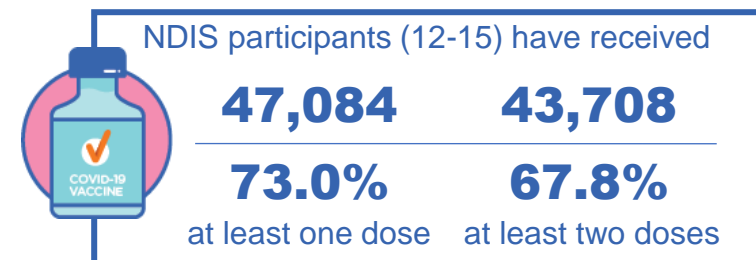
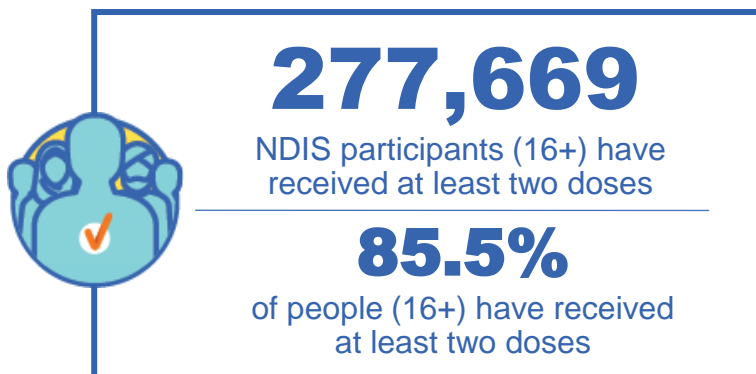
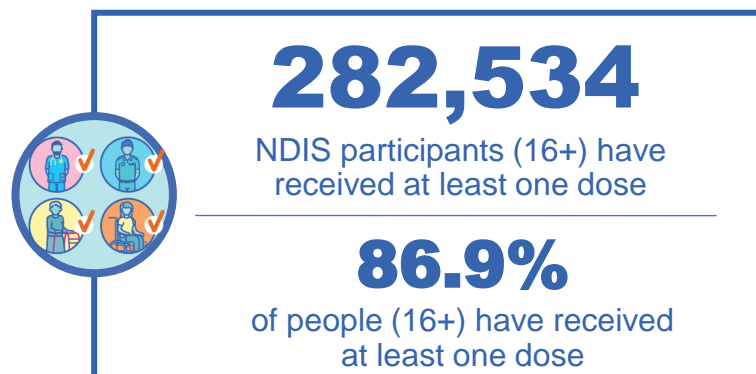
	Aged care residents with at least one dose	Aged care residents with at least two doses	Aged care residents with at least three doses	Aged care residents with at least four doses
NSW	97.0%	96.3%	92.7%	75.4%
VIC	96.9%	96.4%	93.6%	80.7%
QLD	95.1%	94.4%	90.6%	73.7%
SA	96.0%	94.8%	91.3%	75.4%
WA	96.9%	96.1%	92.3%	74.6%
TAS	96.0%	95.1%	92.2%	77.8%
NT	96.9%	95.1%	90.7%	73.3%
ACT	98.0%	97.5%	95.1%	83.1%
National	96.5%	95.8%	92.4%	76.5%

Source: Residential aged care provider self-reported COVID-19 vaccination information and matched AIR data of residents in permanent residential RACFs.

National Disability Insurance Scheme (NDIS) reported vaccinations

Data as at:
12 Feb 2023
Updated weekly

Australia's COVID-19
Vaccine Program



NDIS participant vaccinations

	% People aged 16+ with at least one dose	% People aged 16+ with at least two doses	% People aged 16+ with three doses	% People aged 16+ with four doses
ACT	89.5%	88.4%	83.1%	39.4%
NSW	87.5%	86.2%	74.8%	35.5%
NT	78.2%	76.0%	78.9%	27.9%
QLD	84.9%	83.3%	70.8%	29.7%
SA	84.9%	83.0%	77.6%	31.4%
TAS	87.4%	85.6%	76.1%	32.6%
VIC	88.2%	86.8%	76.9%	33.3%
WA	88.3%	86.7%	81.5%	33.7%
National	86.9%	85.5%	75.6%	33.1%

Source: Linkage between National Disability Insurance Agency data and the Australian Immunisation Register. 'Total' NDIS Participant number last obtained as at 05 February 2023. Australian Immunisation Register data as at 12 February 2023. Includes all participants regardless of residence type.

Explanatory Notes

The Australian Immunisation Register (AIR). The Australian Immunisation Register is a national register that records all vaccines given to all people in Australia.

People received at least x dose/s. The count of unique people who have received at least x dose/s of a COVID-19 vaccine. People with at least x dose/s encompasses people who received x dose/s or more. Please note, to capture a person's current level of protection, this methodology includes any doses an individual received overseas where they have been uploaded into the Australian Immunisation Register, and where the vaccine brand is recognised by the TGA. Some people may not be included in this count where they are viewed as no longer in scope of the vaccination rollout (for example, where a person has permanently left Australia, or they have passed away).

Coverage calculations. First and second dose rates are calculated by taking the number of unique people who have received the corresponding dose from the Australian Immunisation Register and dividing this by the Australian Bureau of Statistics Estimated Residential Population (2021). For doses that are third in sequence or above, the coverage rates often refer to the *eligible* population – that is, the number of people with the dose over the number of people who meet the criteria for that dose in the Australian Immunisation Register. Vaccine coverage uses the state of residence (based on a person's Medicare address).

Eligible population. Eligible population refers to the number of these individuals who meet the criteria for a given dose based on completion of previous doses, age, and time period elapsed since last dose. Please note that the Australian Immunisation Register cannot identify immunocompromised individuals.

Vaccine doses administered. The total number of COVID-19 doses administered refers to the number of doses administered rather than the number of people who have received a COVID-19 vaccine. In most cases (unless otherwise specified) all doses are included (regardless of age of recipient or the dose number), and when these numbers are provided by state, it is typically the state that the dose was physically administered in as opposed to the state where the person resides on a usual basis.

Aboriginal and Torres Strait Islander Peoples. The Aboriginal and Torres Strait Islander population refers to the number of individuals that identify as Aboriginal and Torres Strait Islander in the Australian Immunisation Register. Identifying as Aboriginal and Torres Strait Islander is optional, and the estimated population may be under reported. Numbers include all Aboriginal and Torres Strait Islander peoples who have received a vaccination and are not limited to those administered in an ACCHS setting.

Update Information: Vaccine data is sourced from the Australian Immunisation Register as at 11:59pm 15 February 2023 unless otherwise noted.