



Australian Government

Department of Health and Aged Care

COVID-19 Vaccine Roll-out

25 January 2023

Data as at:
24 Jan 2023
Updated weekly

Total vaccine doses



64,649,696 total vaccine doses administered

+32,604 weekly increase



20,104,999

people (16+) have received at least one dose (>95%)

19,815,709

people (16+) have received at least two doses (>95%)



14,342,179

people (16+) have received three doses



5,433,951

people (16+) have received four doses

NSW
20,045,480
(+9,706 weekly increase)

VIC
16,823,139
(+7,772 weekly increase)

QLD
12,191,660
(+5,373 weekly increase)

WA
7,035,644
(+2,653 weekly increase)

TAS
1,468,557
(+605 weekly increase)

SA
4,504,277
(+1,846 weekly increase)

ACT
1,955,411
(+4,389 weekly increase)

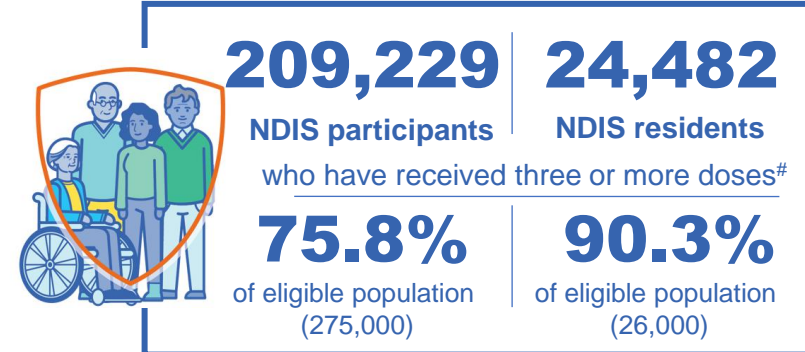
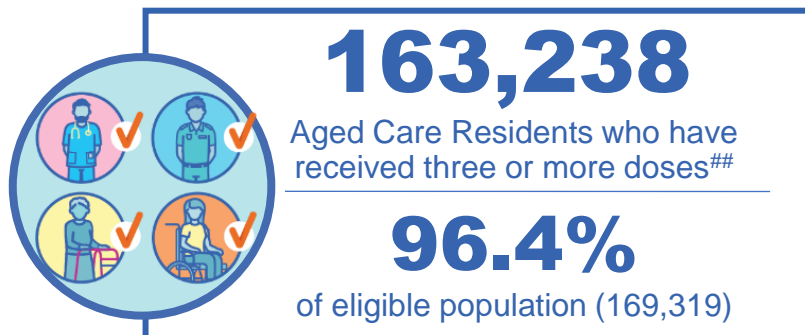
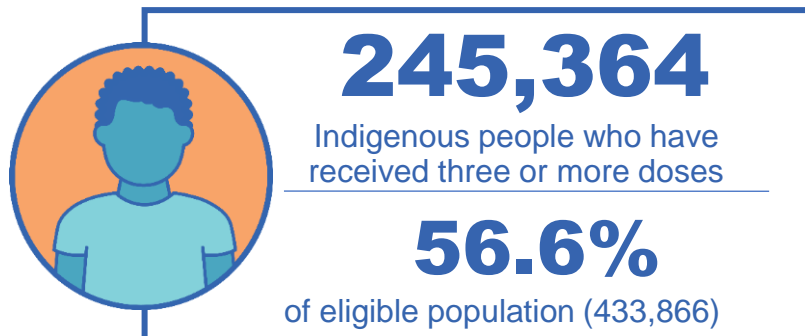
NT
625,528
(+260 weekly increase)

*Administration state breakdown indicates state in which a vaccine was administered

Source: Australian Immunisation Register

Third Doses

Data as at:
24 Jan 2023
Updated weekly



14,342,179 total people who have received three or more doses

+4,308 weekly increase

72.4% of eligible population (19,807,100)

	Number of People	Weekly Increase	% of Eligible
ACT	281,820	42	80.9%
NSW	4,395,268	1,264	70.5%
NT	133,151	22	79.7%
QLD	2,501,442	1,687	65.4%
SA	1,029,055	361	76.2%
TAS	325,461	102	74.7%
VIC	3,807,796	1,142	74.5%
WA	1,734,820	618	83.4%

133,366 doses administered to persons residing in other territories or with missing residential information


*People may belong to multiple groups and could be represented in the above breakdowns multiple times.
#NDIS participants data as at 21 January 2023. ##Aged Care Residents data as at 26 January 2023.

Source: Australian Immunisation Register

Fourth Doses

Data as at:
24 Jan 2023
Updated weekly

Australia's COVID-19
Vaccine Program



134,929
Aged Care Residents who have received four or more doses#

85.5%
of eligible population (157,833)



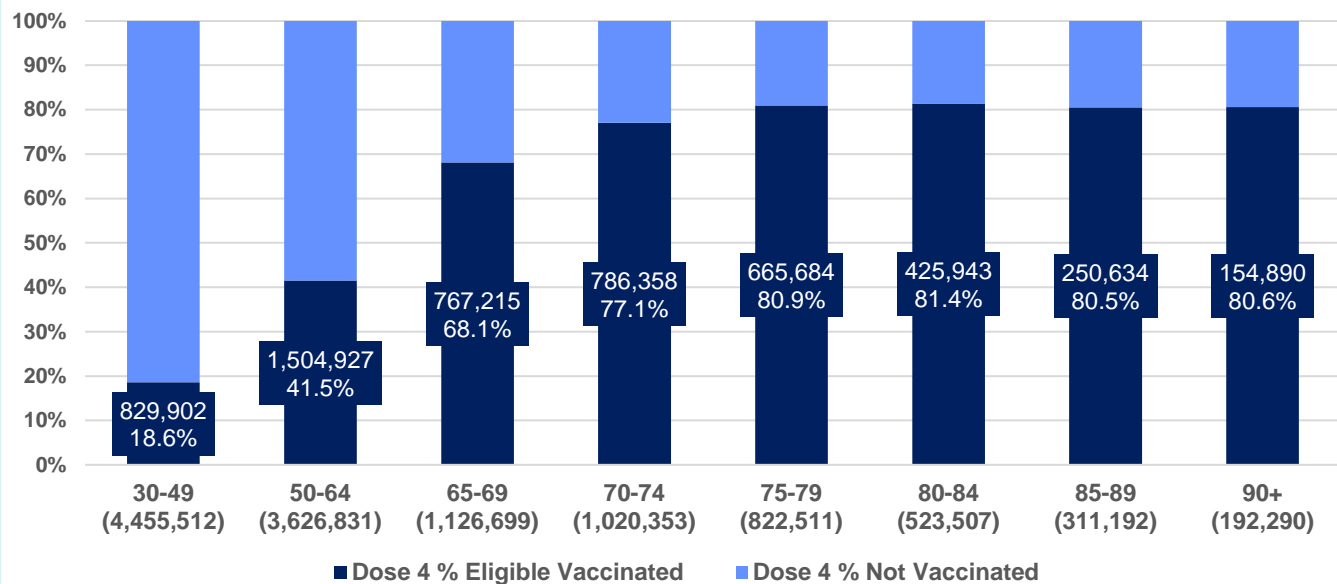
5,433,951
+12,293
44.6%
3,050,724
76.3%

total people (16+) who have received four doses
weekly increase (16+)

of eligible population (30+) (12,078,895)

total people (65+) who have received four doses
of eligible population (65+) (3,996,552)

% Individuals eligible vaccinated by current age



	Number of People 16+	Weekly Increase
ACT	120,332	385
NSW	1,732,621	3,882
NT	29,423	147
QLD	1,031,112	2,077
SA	424,986	707
TAS	145,017	358
VIC	1,356,924	3,363
WA	561,307	1,641

32,229 doses administered to persons residing in other territories or with missing residential information

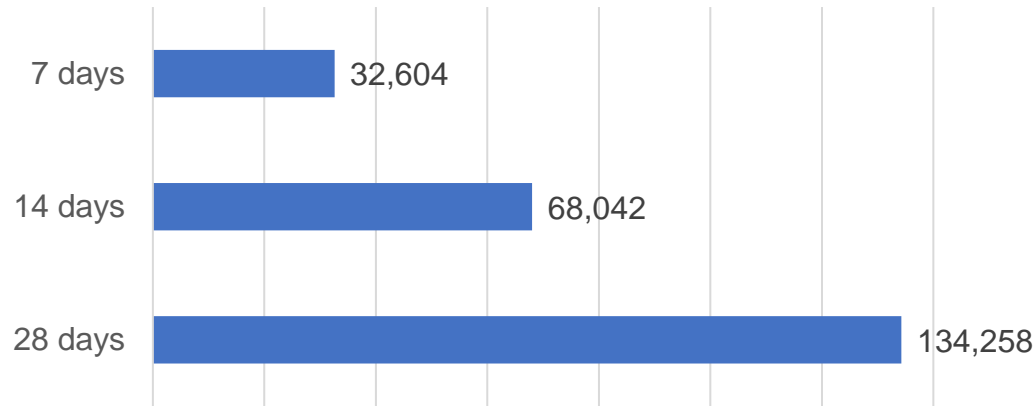
*People become eligible for a fourth dose three months after their third dose. Individuals may belong to multiple groups and could be represented in the above multiple times.
#Aged Care Residents data as at 26 January 2023.

Source: Australian Immunisation Register

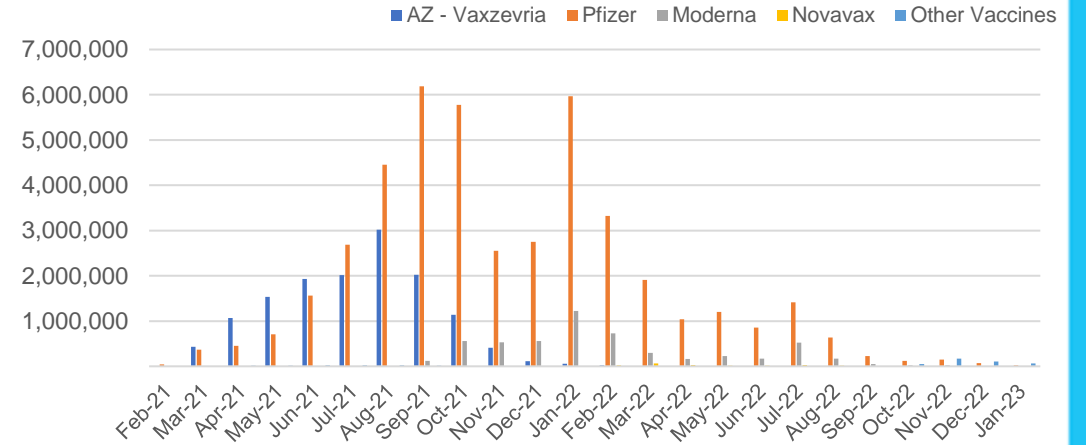
Vaccine milestone charts

Data as at:
24 Jan 2023
Updated weekly

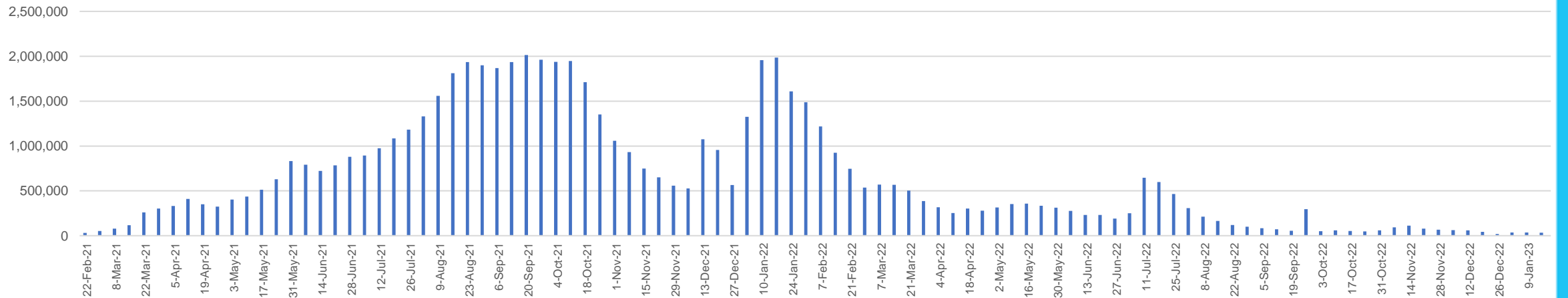
Doses Reported



Doses by administration month and vaccine type



Doses Administered by Week



*Sourced from the Australian Immunisation Register.

Data as at:
24 Jan 2023
Updated weekly

Doses by age and jurisdiction

	AUS	ACT	NSW	NT	QLD	SA	TAS	VIC	WA
5 to 11 - dose 1	1,118,839	30,169	335,797	11,699	192,514	78,027	26,372	304,416	130,155
5 to 11 - dose 2	892,042	26,857	276,505	8,404	148,144	62,790	22,051	242,010	100,145
5 to 11 - population	2,269,663	40,719	711,525	25,120	476,567	149,048	45,549	568,488	252,235
5 to 11 % with dose 1	49.30%	74.09%	47.19%	46.57%	40.40%	52.35%	57.90%	53.55%	51.60%
5 to 11 % with dose 2	39.30%	65.96%	38.86%	33.46%	31.09%	42.13%	48.41%	42.57%	39.70%
12 to 15 - dose 1	1,013,155	20,021	310,803	10,150	196,756	66,180	22,069	264,399	112,308
12 to 15 - dose 2	947,296	19,378	294,414	9,048	181,373	61,805	20,722	249,481	102,581
12 to 15 - population	1,279,387	20,888	399,352	13,190	278,225	85,541	27,469	313,711	140,783
12 to 15 % with dose 1	79.19%	95.85%	77.83%	76.95%	70.72%	77.37%	80.34%	84.28%	79.77%
12 to 15 % with dose 2	74.04%	92.77%	73.72%	68.60%	65.19%	72.25%	75.44%	79.53%	72.86%
16 and over - dose 1	20,104,999	353,774	6,320,372	171,108	3,881,932	1,377,304	443,600	5,178,537	2,106,425
16 and over - dose 2	19,815,709	348,635	6,235,764	167,245	3,824,597	1,351,700	435,932	5,115,416	2,079,929
16 and over - dose 3	14,342,179	281,820	4,395,268	133,151	2,501,442	1,029,055	325,461	3,807,796	1,734,820
16 and over - population	20,629,070	364,811	6,504,442	193,211	4,161,009	1,471,062	465,436	5,279,175	2,185,967
16 and over % with dose 1	97.46%	96.97%	97.17%	88.56%	93.29%	93.63%	95.31%	98.09%	96.36%
16 and over % with dose 2	96.06%	95.57%	95.87%	86.56%	91.92%	91.89%	93.66%	96.90%	95.15%
16 and over % with dose 3	69.52%	77.25%	67.57%	68.91%	60.12%	69.95%	69.93%	72.13%	79.36%
30 and over - dose 1	15,728,129	274,017	4,970,511	126,882	3,033,761	1,094,940	352,613	4,043,826	1,650,453
30 and over - dose 2	15,536,484	270,501	4,912,647	124,696	2,997,614	1,079,285	347,802	3,999,907	1,633,272
30 and over - dose 3	12,138,803	231,285	3,750,679	104,974	2,175,153	880,139	281,630	3,183,034	1,432,180
30 and over - dose 4	5,385,553	118,763	1,715,794	28,818	1,023,742	422,513	143,971	1,343,153	557,178
30 and over - population	16,012,407	268,806	5,065,001	140,954	3,219,394	1,157,853	368,927	4,079,079	1,709,089
30 and over % with dose 1	98.22%	>99%	98.13%	90.02%	94.23%	94.57%	95.58%	>99%	96.57%
30 and over % with dose 2	97.03%	>99%	96.99%	88.47%	93.11%	93.21%	94.27%	98.06%	95.56%
30 and over % with dose 3	75.81%	86.04%	74.05%	74.47%	67.56%	76.01%	76.34%	78.03%	83.80%
30 and over % with dose 4	33.63%	44.18%	33.88%	20.44%	31.80%	36.49%	39.02%	32.93%	32.60%
65 and over - dose 1	4,389,792	64,570	1,419,149	20,513	853,119	350,102	114,816	1,095,841	431,844
65 and over - dose 2	4,351,171	63,781	1,406,713	20,252	846,850	347,434	114,116	1,085,605	428,836
65 and over - dose 3	4,003,969	60,519	1,282,346	18,454	778,577	325,991	107,759	991,389	407,343
65 and over - dose 4	3,050,724	51,080	971,102	11,987	605,799	257,304	86,837	737,251	308,981
65 and over - population	4,313,779	60,463	1,393,416	21,593	864,448	352,458	116,037	1,072,562	431,884
65 and over % with dose 1	>99%	>99%	>99%	95.00%	98.69%	>99%	98.95%	>99%	>99%
65 and over % with dose 2	>99%	>99%	>99%	93.79%	97.96%	98.57%	98.34%	>99%	>99%
65 and over % with dose 3	92.82%	>99%	92.03%	85.46%	90.07%	92.49%	92.87%	92.43%	94.32%
65 and over % with dose 4	70.72%	84.48%	69.69%	55.51%	70.08%	73.00%	74.84%	68.74%	71.54%

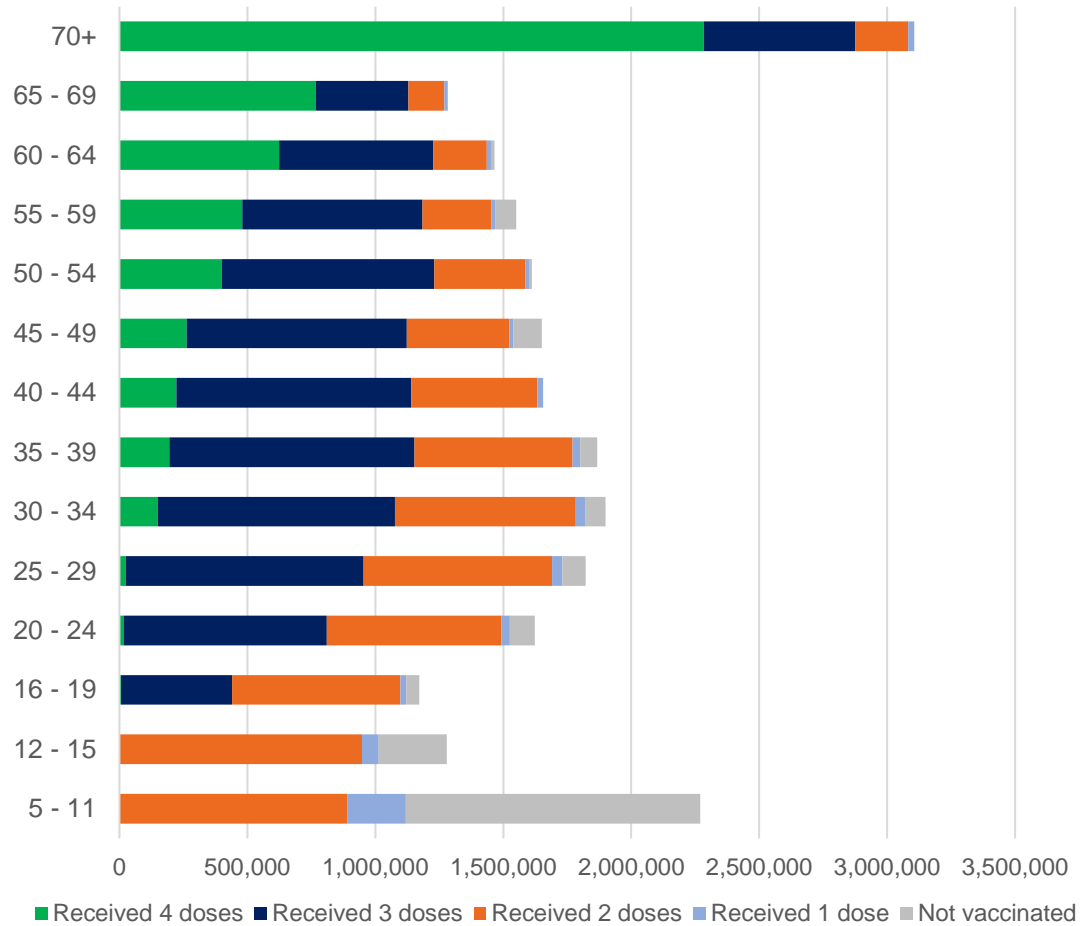
*National population will not equal sum of listed jurisdictions due to a small number of people counted in national population residing in some 'other' territories. Sum of state doses will not add to national total as some records are unable to be geocoded to a State or Territory.

Doses sourced from Australian Immunisation Register, population from ABS ERP June 2021

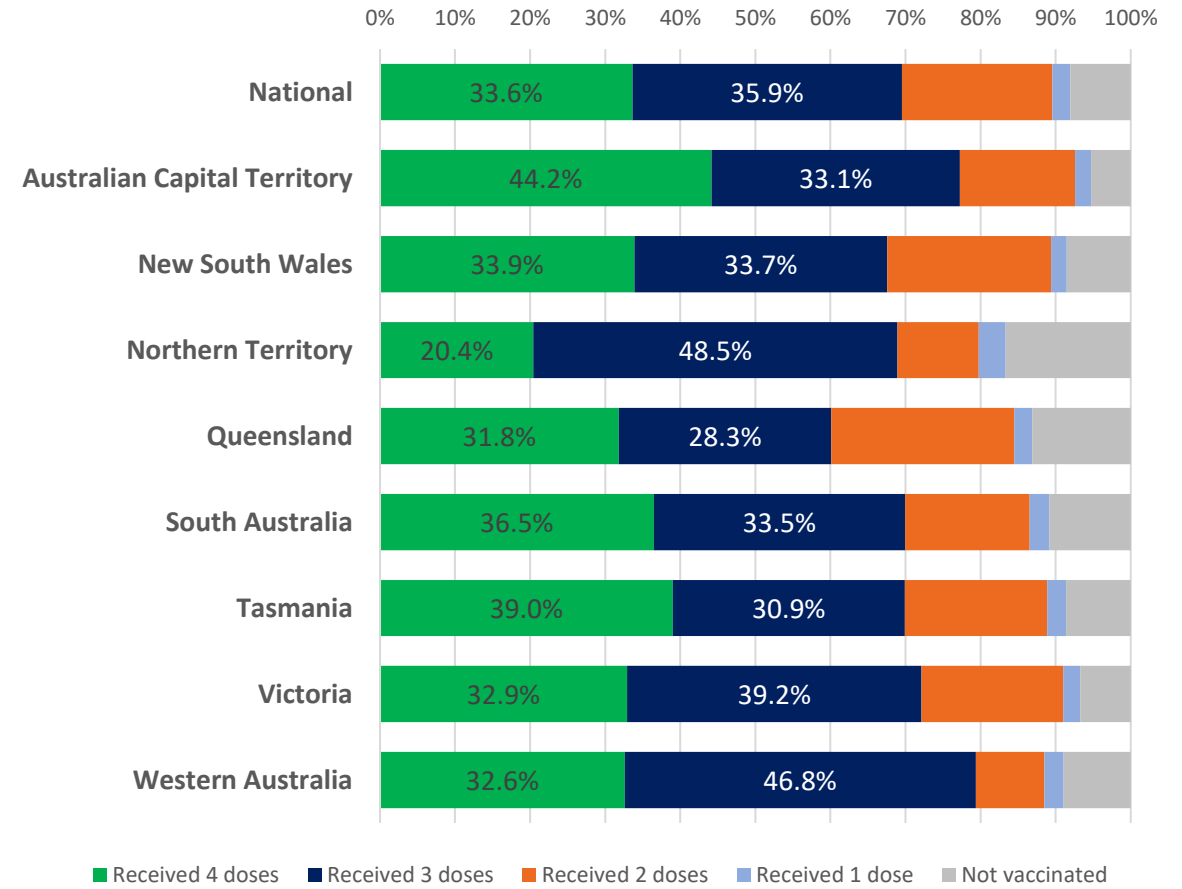
Data as at:
24 Jan 2023
Updated weekly

Vaccinations by age and location

Number of people vaccinated by age

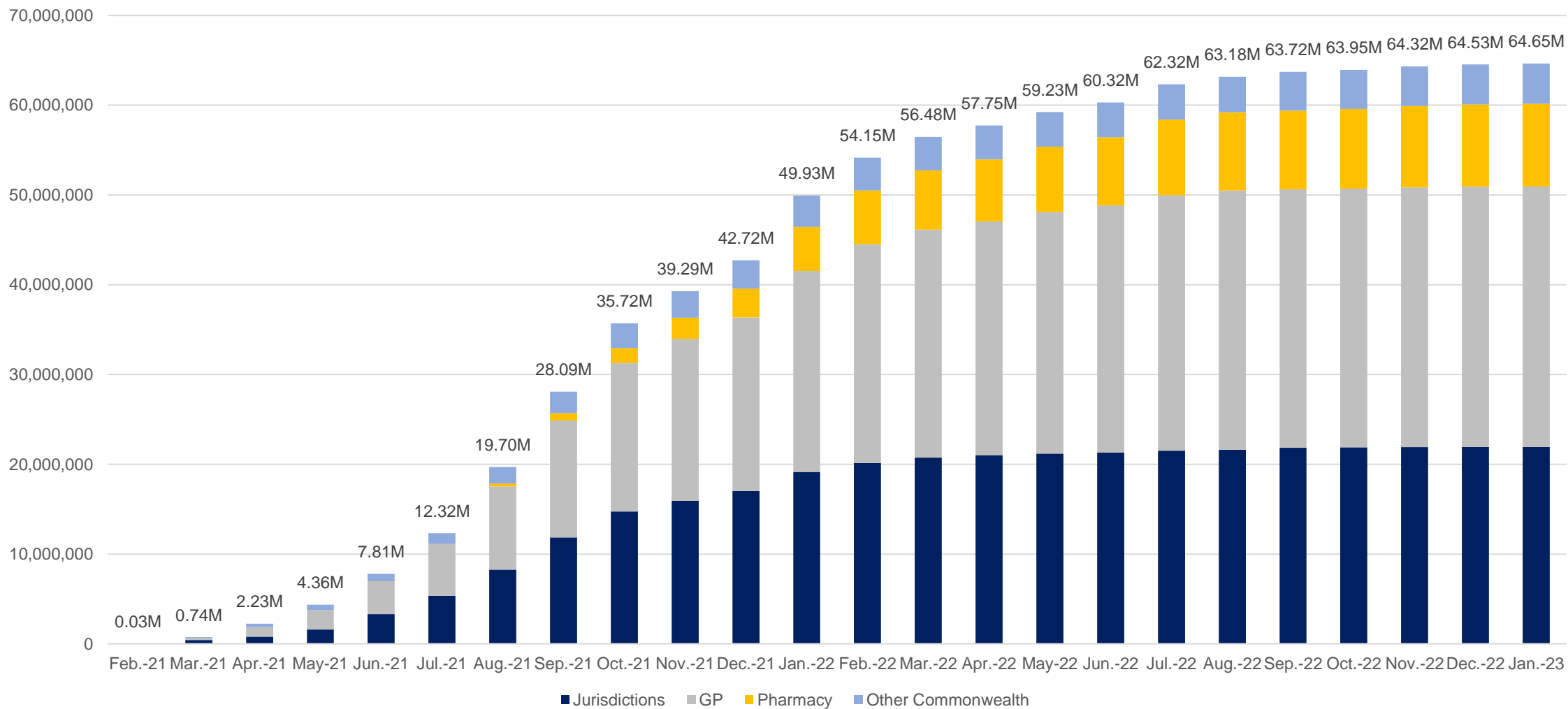


Individuals vaccinated by residential location



Data as at:
24 Jan 2023
Updated weekly

Cumulative doses administered by channel



Source: Australian Immunisation Register

Commonwealth primary care

Data as at:
24 Jan 2023
Updated weekly

Australia's COVID-19
Vaccine Program



Primary care vaccine administration sites

4,781

GPs

181

ACCHS

3,034

Pharmacies



41,352,326 total vaccine doses administered
in primary care settings

+28,051 weekly increase

Primary care vaccinations by provider type

	Doses administered	Weekly increase
General Practice*	32,057,231	14,258
Pharmacy	9,295,095	13,793

NSW
14,203,186
(+8,897 weekly increase)

VIC
10,242,843
(+7,376 weekly increase)

QLD
8,002,057
(+7,388 weekly increase)

WA
4,276,841
(+3,173 weekly increase)

TAS
799,156
(+833 weekly increase)

SA
2,527,074
(+2,010 weekly increase)

ACT
686,387
(+791 weekly increase)

NT
239,162
(+323 weekly increase)

375,620

doses administered to persons residing in other territories or with missing residential information

*General practice includes Aboriginal Community Health Centres, Royal Flying Doctor Service and other Commonwealth vaccination facilities

#Primary care site numbers are reported as at 23 January 2023 and are based on the number of sites participating in the rollout

Source: Australian Immunisation Register

Aboriginal and Torres Strait Islander peoples

Number of people vaccinated

Data as at:
24 Jan 2023
Updated weekly

Australia's COVID-19
Vaccine Program



People (16+) with at least one dose

451,784 **85.5%**

People (16+) with at least two doses

434,588 **82.3%**



Eligible people (16+) with three doses

245,364 **56.6%**

Eligible people (30+) with four doses

65,600 **35.2%**



People (12-15) with at least one dose

45,308 **64.5%**

People (12-15) with at least two doses

38,987 **55.5%**

109 Aboriginal community controlled health services (ACCHS) sites

1	21	18	33	13	2	7	14
ACT	NSW	NT	QLD	SA	TAS	VIC	WA

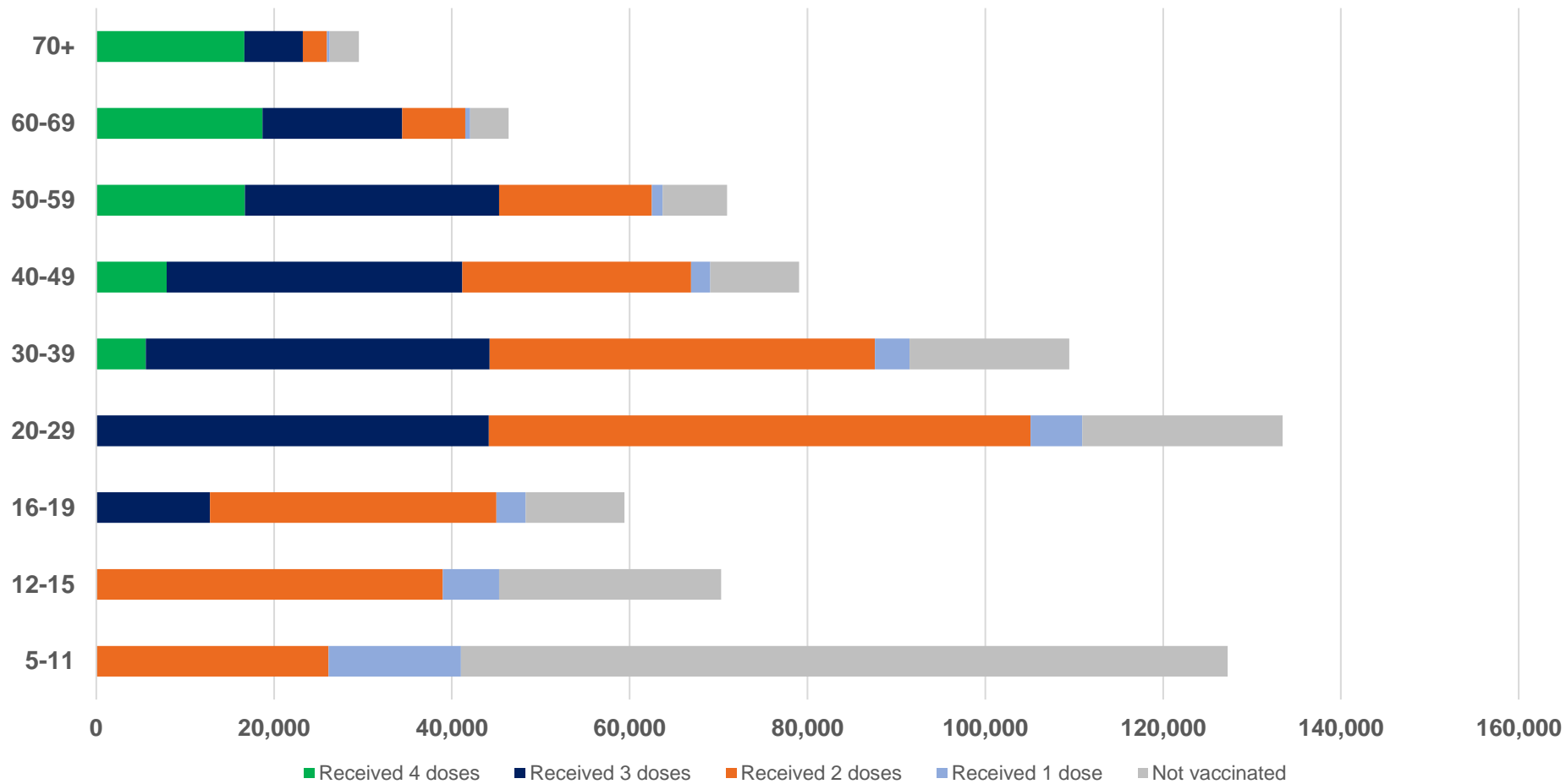
Residential State	Individuals Dose 1 % (16+)	Individuals Dose 2 % (16+)	Individuals Dose 3 % Eligible (aged 16+)	Individuals Dose 4 % Eligible (aged 30+)
ACT	92.3%	90.1%	65.6%	42.9%
NSW	87.9%	86.1%	53.2%	38.0%
NT	90.2%	86.3%	70.4%	26.5%
QLD	82.4%	78.9%	49.2%	37.8%
SA	81.3%	76.3%	61.1%	38.6%
TAS	89.3%	86.9%	60.1%	42.1%
VIC	90.9%	89.0%	62.5%	36.6%
WA	87.6%	82.3%	66.4%	30.0%
Unknown/Other Territories	72.9%	67.9%	51.4%	24.6%
National Coverage %	85.5%	82.3%	56.6%	35.2%
Number with a Dose	451,784	434,588	245,364	65,600
Total / Eligible Population	528,228	528,228	433,866	186,625

Identifying as Aboriginal and Torres Strait Islander is optional and the estimated population may be under reported. Numbers include all Aboriginal and Torres Strait Islander peoples who have received a vaccination, and are not limited to those administered in an ACCHS setting. The total population refers to the number of individuals that identify as Aboriginal and Torres Strait Islander in the Australian Immunisation Register, while the eligible population refers to the number of these individuals who meet the criteria for a further dose (based on completion of previous doses, age, and time period elapsed since last dose). Please note there may be people under 30 who are eligible, but these are not included in coverage rates or population to protect privacy.

Data as at:
24 Jan 2023
Updated weekly

Aboriginal and Torres Strait Islander peoples

Number of people vaccinated by age



Source: Australian Immunisation Register

Individuals with Culturally and Linguistically Diverse (CALD) backgrounds data

Data as at:
15 January 2023
Updated weekly

Australia's COVID-19
Vaccine Program

People over the age of 16

CALD population *	Total number of individuals in cohort	% People with at least one dose	% People who received two doses	% of eligible people who received three or more doses
General population	20,629,070	>95.0%	>95.0%	72.4%
People born overseas	4,296,614	94.6%	94.1%	73.6%
Speaks a language other than English at home	3,982,991	94.1%	93.5%	69.5%

	General population			Born Overseas			Speaks a language other than English at home		
	% with at least one dose	% who received two doses	% of eligible people who received three or more doses	% with at least one dose	% who received two doses	% of eligible people who received three or more doses	% with at least one dose	% who received two doses	% of eligible people who received three or more doses
ACT	>95.0%	>95.0%	80.9%	>95.0%	>95.0%	79.4%	>95.0%	>95.0%	76.7%
NSW	>95.0%	>95.0%	70.5%	94.9%	94.4%	71.1%	94.1%	93.5%	66.4%
NT	88.5%	86.5%	79.7%	>95.0%	94.8%	88.4%	94.1%	93.7%	87.0%
Qld	93.3%	91.9%	65.4%	92.2%	91.6%	68.2%	92.5%	91.8%	64.8%
SA	93.6%	91.9%	76.2%	92.9%	92.0%	75.8%	91.8%	90.8%	72.0%
Tas	>95.0%	93.6%	74.7%	93.4%	92.9%	76.7%	93.3%	92.7%	72.8%
Vic	>95.0%	>95.0%	74.5%	>95.0%	94.9%	73.8%	94.8%	94.2%	69.8%
WA	>95.0%	>95.0%	83.4%	>95.0%	94.7%	85.7%	>95.0%	94.7%	83.7%

*Individuals with Culturally and Linguistically Diverse (CALD) backgrounds are as reported in the 2021 Census, excluding those who have since departed Australia; deceased persons; those born in the UK, Ireland or NZ; and Aboriginal and/or Torres Strait Islander peoples. There is overlap across CALD cohorts where individuals may have reported they had more than one CALD characteristic in the 2021 Census.

Small negative changes may appear when compared with the previous report due to perturbation, data maturity and changes in population sizes.

Source: Australian Immunisation Register linked to the Multi-Agency Data Integration Project (Census 2021 characteristics). Coverage rates for the general population are as published for 18 January 2023.

Data as at:
26 Jan 2023
Updated weekly

Residential aged care vaccination rollout



170,581
Aged care residents with at least one dose



169,319
Aged care residents with at least two doses



163,238
Aged care residents with at least three doses



134,929
Aged care residents with at least four doses



>99%
Aged care workers with at least two doses nationally

Aged care resident vaccinations

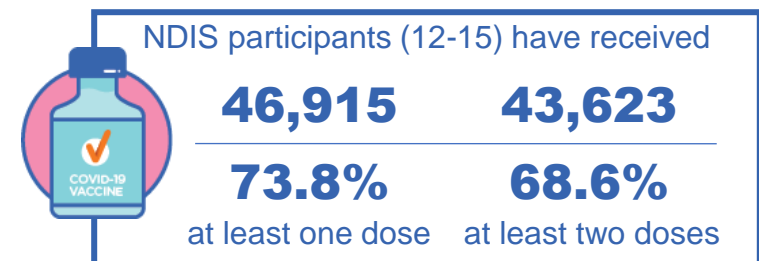
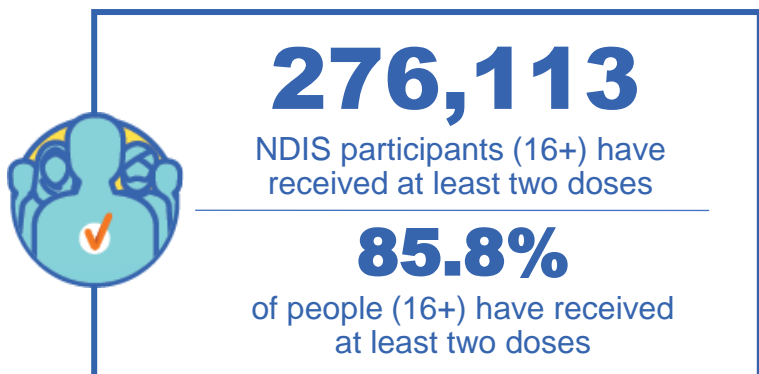
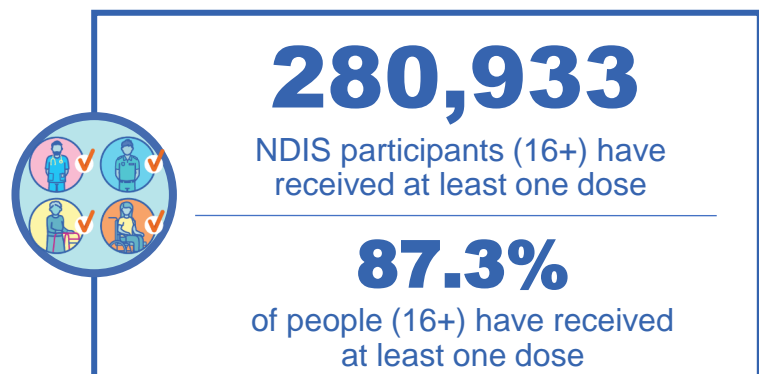
	Aged care residents with at least one dose	Aged care residents with at least two doses	Aged care residents with at least three doses	Aged care residents with at least four doses
NSW	97.0%	96.3%	92.7%	75.2%
VIC	96.9%	96.4%	93.5%	80.6%
QLD	95.1%	94.4%	90.5%	73.5%
SA	96.0%	94.8%	91.2%	75.0%
WA	96.9%	96.1%	92.3%	74.5%
TAS	96.0%	95.1%	92.1%	77.1%
NT	96.9%	95.1%	90.7%	73.3%
ACT	98.0%	97.5%	95.1%	83.1%
National	96.5%	95.8%	92.3%	76.3%

Source: Residential aged care provider self-reported COVID-19 vaccination information and matched AIR data of residents in permanent residential RACFs.

National Disability Insurance Scheme (NDIS) reported vaccinations

Data as at:
21 Jan 2023
Updated weekly

Australia's COVID-19
Vaccine Program



NDIS participant vaccinations

	% People aged 16+ with at least one dose	% People aged 16+ with at least two doses	% People aged 16+ with three doses	% People aged 16+ with four doses
ACT	89.8%	88.7%	83.5%	39.6%
NSW	87.8%	86.5%	74.9%	35.7%
NT	78.2%	76.0%	78.7%	27.7%
QLD	85.3%	83.8%	71.0%	29.9%
SA	85.4%	83.5%	77.8%	31.6%
TAS	87.7%	85.8%	76.2%	32.5%
VIC	88.6%	87.2%	77.1%	33.4%
WA	88.8%	87.1%	81.6%	33.8%
National	87.3%	85.8%	75.8%	33.3%

Source: Linkage between National Disability Insurance Agency data and the Australian Immunisation Register. 'Total' NDIS Participant number last obtained as at 21 January 2023. Australian Immunisation Register data as at 21 January 2023. Includes all participants regardless of residence type.

Explanatory Notes

The Australian Immunisation Register (AIR). The Australian Immunisation Register is a national register that records all vaccines given to all people in Australia.

People received at least x dose/s. The count of unique people who have received at least x dose/s of a COVID-19 vaccine. People with at least x dose/s encompasses people who received x dose/s or more. Please note, to capture a person's current level of protection, this methodology includes any doses an individual received overseas where they have been uploaded into the Australian Immunisation Register, and where the vaccine brand is recognised by the TGA. Some people may not be included in this count where they are viewed as no longer in scope of the vaccination rollout (for example, where a person has permanently left Australia, or they have passed away).

Coverage calculations. First and second dose rates are calculated by taking the number of unique people who have received the corresponding dose from the Australian Immunisation Register and dividing this by the Australian Bureau of Statistics Estimated Residential Population (2021). For doses that are third in sequence or above, the coverage rates often refer to the *eligible* population – that is, the number of people with the dose over the number of people who meet the criteria for that dose in the Australian Immunisation Register. Vaccine coverage uses the state of residence (based on a person's Medicare address).

Eligible population. Eligible population refers to the number of these individuals who meet the criteria for a given dose based on completion of previous doses, age, and time period elapsed since last dose. Please note that the Australian Immunisation Register cannot identify immunocompromised individuals.

Vaccine doses administered. The total number of COVID-19 doses administered refers to the number of doses administered rather than the number of people who have received a COVID-19 vaccine. In most cases (unless otherwise specified) all doses are included (regardless of age of recipient or the dose number), and when these numbers are provided by state, it is typically the state that the dose was physically administered in as opposed to the state where the person resides on a usual basis.

Aboriginal and Torres Strait Islander Peoples. The Aboriginal and Torres Strait Islander population refers to the number of individuals that identify as Aboriginal and Torres Strait Islander in the Australian Immunisation Register. Identifying as Aboriginal and Torres Strait Islander is optional, and the estimated population may be under reported. Numbers include all Aboriginal and Torres Strait Islander peoples who have received a vaccination and are not limited to those administered in an ACCHS setting.

Update information. Vaccine data is sourced from the Australian Immunisation Register as at 11:59pm 24 January 2023 unless otherwise noted.