



Australian Government

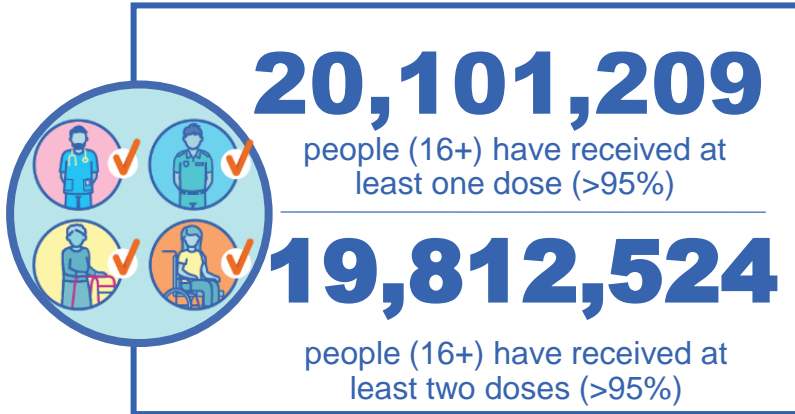
Department of Health and Aged Care

COVID-19 Vaccine Roll-out

19 January 2023

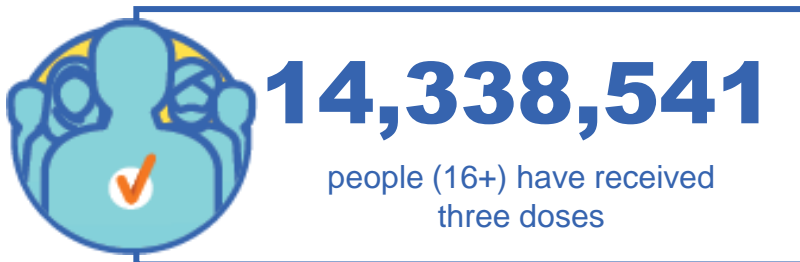
Data as at:
18 Jan 2023
Updated weekly

Total vaccine doses



64,623,053 total vaccine doses administered

+35,442 weekly increase

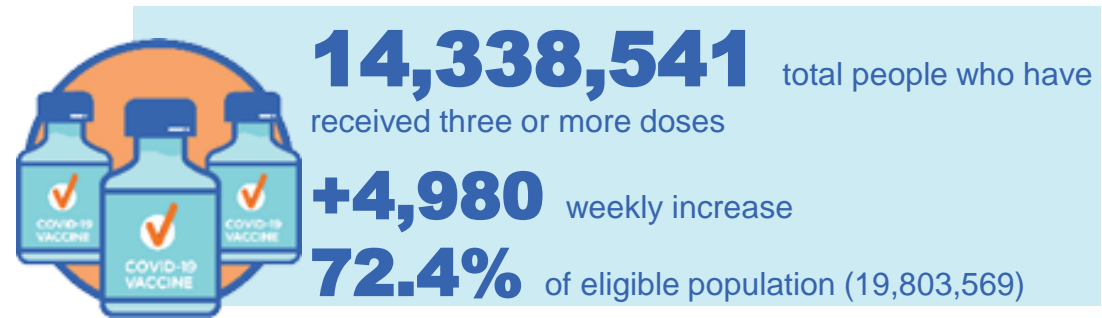
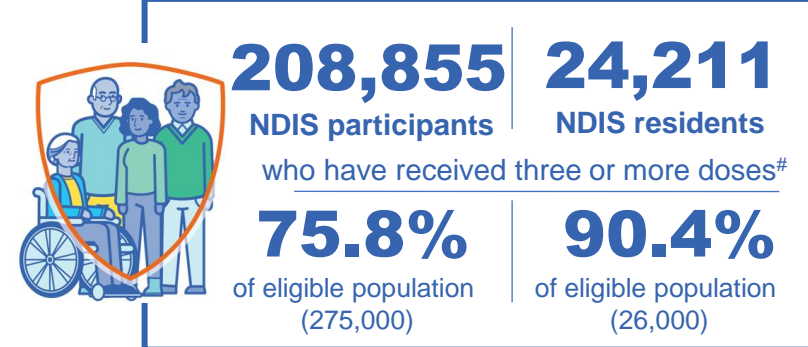
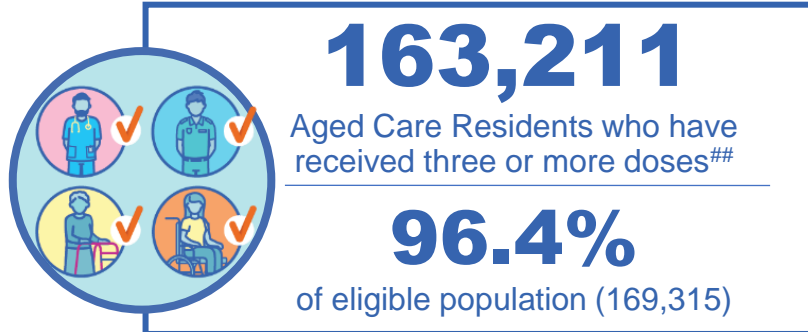
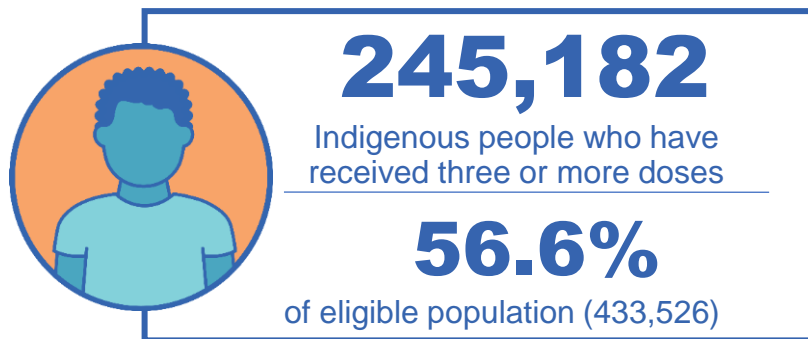


*Administration state breakdown indicates state in which a vaccine was administered

Source: Australian Immunisation Register

Third Doses

Data as at:
18 Jan 2023
Updated weekly##



	Number of People	Weekly Increase	% of Eligible
ACT	281,784	71	80.9%
NSW	4,394,234	1,637	70.5%
NT	133,139	31	79.7%
QLD	2,499,956	1,543	65.4%
SA	1,028,783	437	76.2%
TAS	325,388	78	74.7%
VIC	3,806,902	1,417	74.5%
WA	1,734,290	526	83.4%

134,065 doses administered to persons residing in other territories or with missing residential information


*People may belong to multiple groups and could be represented in the above breakdowns multiple times.
#NDIS participants data as at 14 January 2023. ##Aged Care Residents data as at 19 January 2023.

Source: Australian Immunisation Register

Fourth Doses

Data as at:
18 Jan 2023
Updated weekly#

Australia's COVID-19
Vaccine Program



134,816
Aged Care Residents who have received four or more doses#

85.5%
of eligible population (157,724)



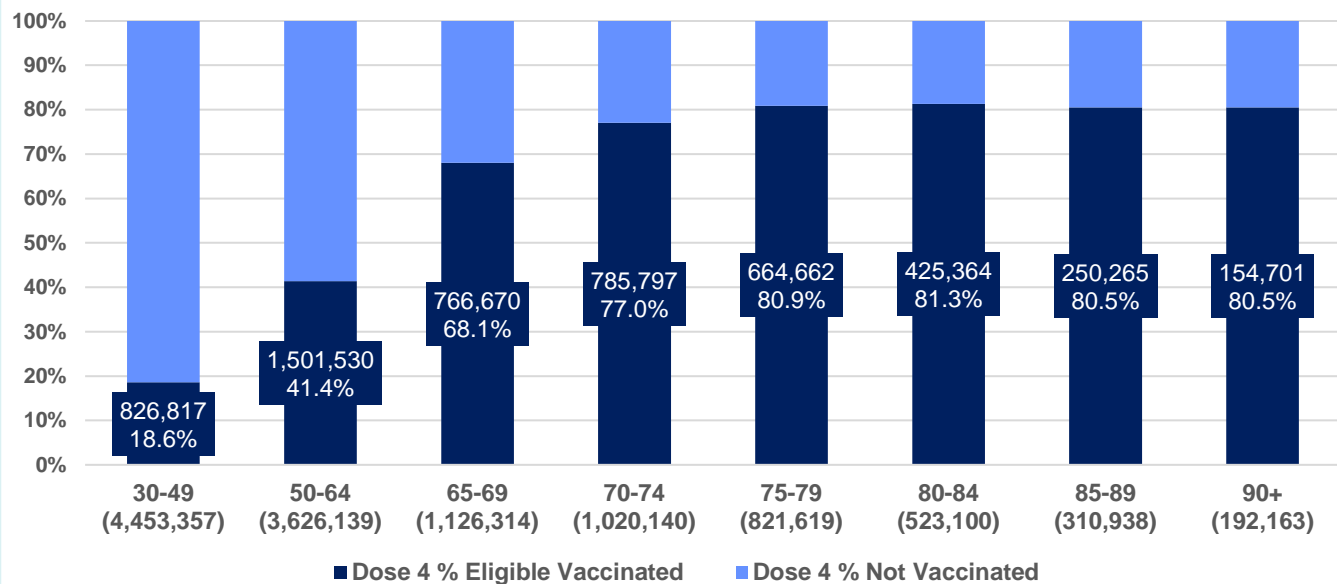
5,423,882
+14,222
44.5%
3,047,459
76.3%

total people (16+) who have received four doses
weekly increase (16+)

of eligible population (30+) (12,073,770)

total people (65+) who have received four doses
of eligible population (65+) (3,994,274)

% Individuals eligible vaccinated by current age



	Number of People 16+	Weekly Increase
ACT	120,003	428
NSW	1,729,386	4,586
NT	29,298	143
QLD	1,029,413	2,268
SA	424,445	839
TAS	144,749	375
VIC	1,354,220	3,874
WA	559,925	1,832

32,443

doses administered to persons residing in other territories or with missing residential information

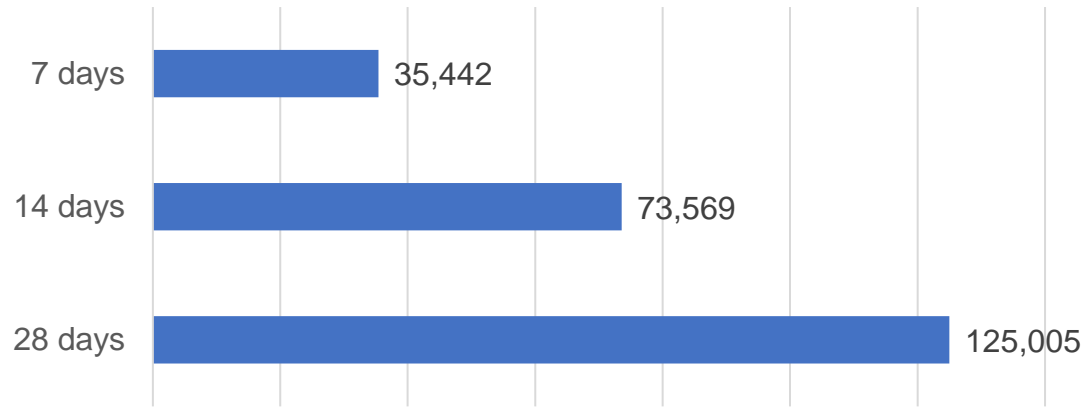
*People become eligible for a fourth dose three months after their third dose. Individuals may belong to multiple groups and could be represented in the above multiple times.
#Aged Care Residents data as at 19 January 2023.

Source: Australian Immunisation Register

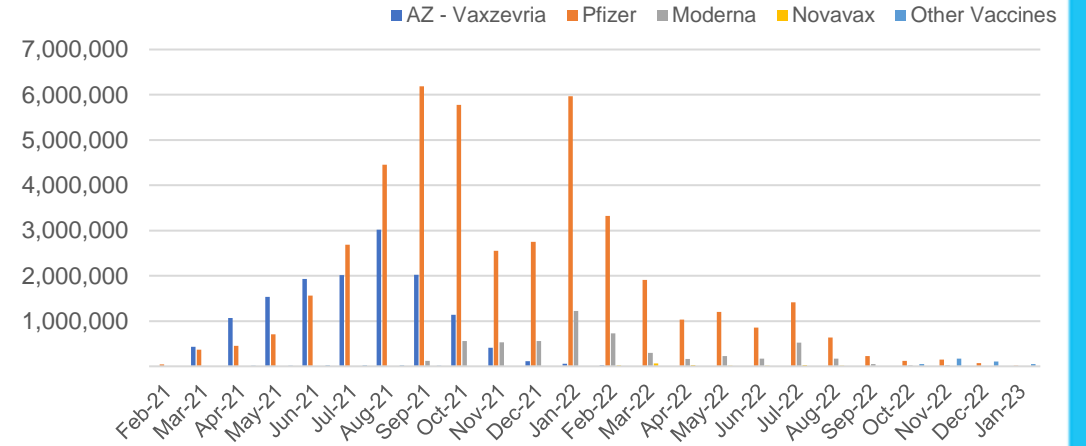
Vaccine milestone charts

Data as at:
18 Jan 2023
Updated weekly

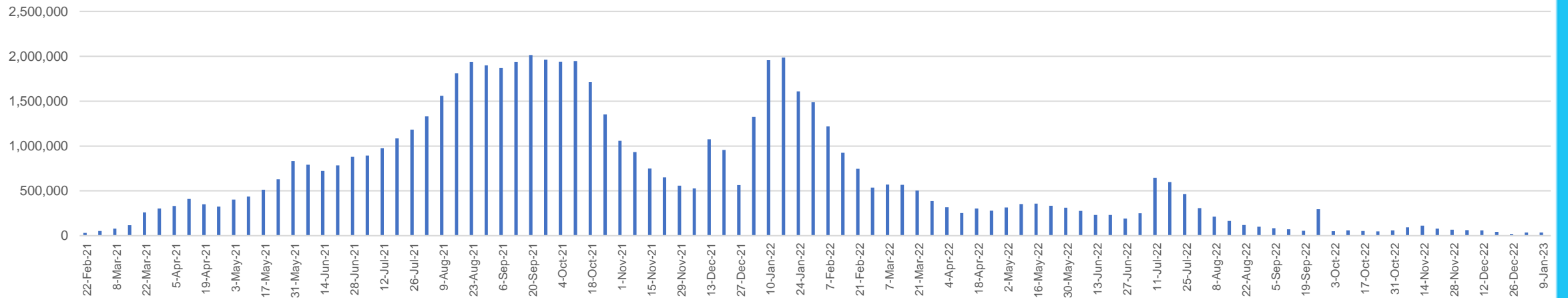
Doses Reported



Doses by administration month and vaccine type



Doses Administered by Week



*Sourced from the Australian Immunisation Register.

Data as at:
18 Jan 2023
Updated weekly

Doses by age and jurisdiction

	AUS	ACT	NSW	NT	QLD	SA	TAS	VIC	WA
5 to 11 - dose 1	1,121,269	30,222	336,544	11,727	192,874	78,182	26,448	304,994	130,467
5 to 11 - dose 2	893,824	26,907	277,093	8,423	148,355	62,905	22,102	242,470	100,370
5 to 11 - population	2,269,663	40,719	711,525	25,120	476,567	149,048	45,549	568,488	252,235
5 to 11 % with dose 1	49.40%	74.22%	47.30%	46.68%	40.47%	52.45%	58.06%	53.65%	51.72%
5 to 11 % with dose 2	39.38%	66.08%	38.94%	33.53%	31.13%	42.20%	48.52%	42.65%	39.79%
12 to 15 - dose 1	1,014,393	20,000	311,222	10,179	197,047	66,244	22,081	264,702	112,368
12 to 15 - dose 2	948,964	19,365	294,939	9,080	181,769	61,901	20,739	249,889	102,724
12 to 15 - population	1,279,387	20,888	399,352	13,190	278,225	85,541	27,469	313,711	140,783
12 to 15 % with dose 1	79.29%	95.75%	77.93%	77.17%	70.82%	77.44%	80.39%	84.38%	79.82%
12 to 15 % with dose 2	74.17%	92.71%	73.85%	68.84%	65.33%	72.36%	75.50%	79.66%	72.97%
16 and over - dose 1	20,101,209	353,719	6,319,498	171,075	3,880,166	1,376,924	443,514	5,177,472	2,105,514
16 and over - dose 2	19,812,524	348,593	6,235,053	167,216	3,822,952	1,351,369	435,856	5,114,558	2,079,061
16 and over - dose 3	14,338,541	281,784	4,394,234	133,139	2,499,956	1,028,783	325,388	3,806,902	1,734,290
16 and over - population	20,629,070	364,811	6,504,442	193,211	4,161,009	1,471,062	465,436	5,279,175	2,185,967
16 and over % with dose 1	97.44%	96.96%	97.16%	88.54%	93.25%	93.60%	95.29%	98.07%	96.32%
16 and over % with dose 2	96.04%	95.55%	95.86%	86.55%	91.88%	91.86%	93.64%	96.88%	95.11%
16 and over % with dose 3	69.51%	77.24%	67.56%	68.91%	60.08%	69.93%	69.91%	72.11%	79.34%
30 and over - dose 1	15,724,027	273,949	4,969,494	126,860	3,032,186	1,094,608	352,505	4,042,653	1,649,648
30 and over - dose 2	15,532,886	270,443	4,911,780	124,676	2,996,128	1,078,992	347,696	3,998,918	1,632,505
30 and over - dose 3	12,134,864	231,225	3,749,651	104,951	2,173,871	879,854	281,527	3,181,962	1,431,491
30 and over - dose 4	5,375,806	118,438	1,712,662	28,692	1,022,095	421,986	143,706	1,340,537	555,855
30 and over - population	16,012,407	268,806	5,065,001	140,954	3,219,394	1,157,853	368,927	4,079,079	1,709,089
30 and over % with dose 1	98.20%	>99%	98.11%	90.00%	94.18%	94.54%	95.55%	>99%	96.52%
30 and over % with dose 2	97.01%	>99%	96.97%	88.45%	93.06%	93.19%	94.25%	98.03%	95.52%
30 and over % with dose 3	75.78%	86.02%	74.03%	74.46%	67.52%	75.99%	76.31%	78.01%	83.76%
30 and over % with dose 4	33.57%	44.06%	33.81%	20.36%	31.75%	36.45%	38.95%	32.86%	32.52%
65 and over - dose 1	4,387,357	64,526	1,418,351	20,494	852,500	349,925	114,698	1,095,271	431,445
65 and over - dose 2	4,348,870	63,741	1,405,972	20,235	846,247	347,263	113,999	1,085,071	428,444
65 and over - dose 3	4,001,861	60,476	1,281,679	18,435	778,049	325,832	107,646	990,907	406,968
65 and over - dose 4	3,047,459	51,002	970,022	11,960	605,128	257,072	86,705	736,490	308,514
65 and over - population	4,313,779	60,463	1,393,416	21,593	864,448	352,458	116,037	1,072,562	431,884
65 and over % with dose 1	>99%	>99%	>99%	94.91%	98.62%	>99%	98.85%	>99%	>99%
65 and over % with dose 2	>99%	>99%	>99%	93.71%	97.89%	98.53%	98.24%	>99%	>99%
65 and over % with dose 3	92.77%	>99%	91.98%	85.37%	90.01%	92.45%	92.77%	92.39%	94.23%
65 and over % with dose 4	70.64%	84.35%	69.61%	55.39%	70.00%	72.94%	74.72%	68.67%	71.43%

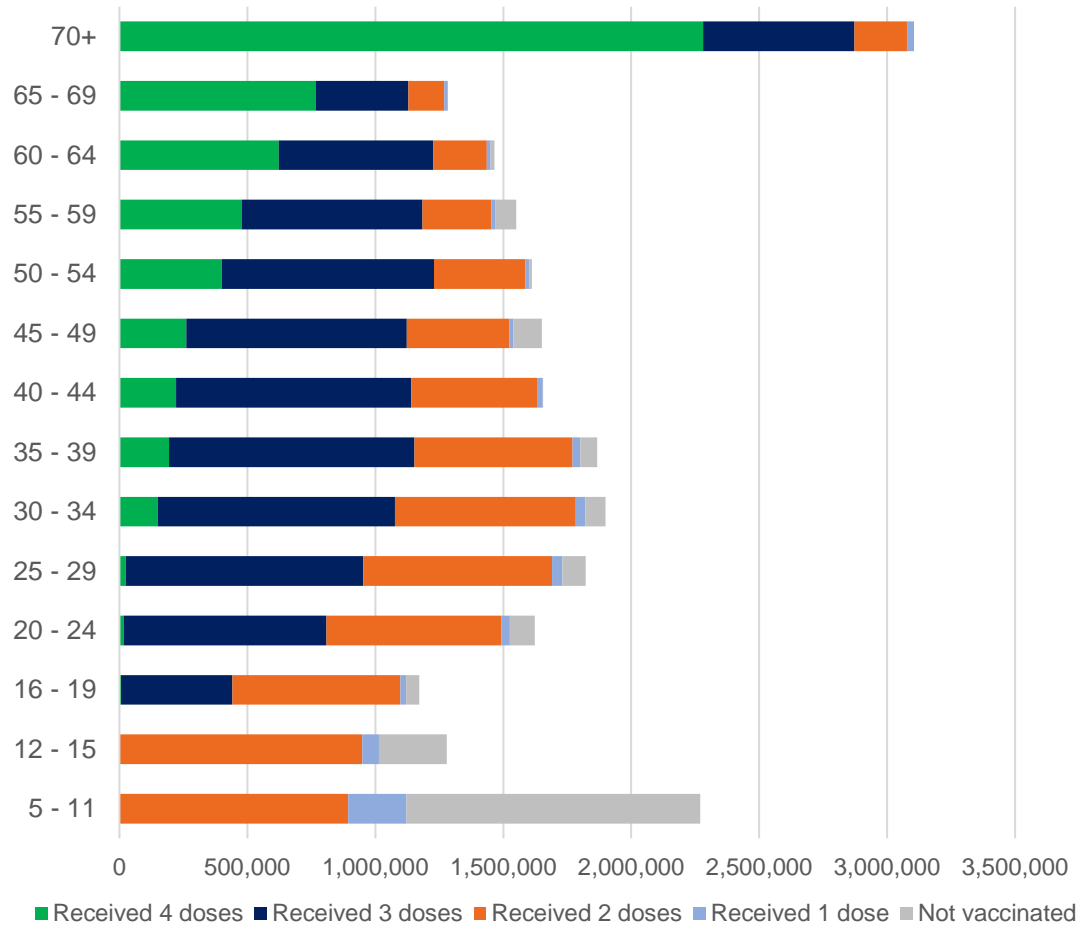
*National population will not equal sum of listed jurisdictions due to a small number of people counted in national population residing in some 'other' territories. Sum of state doses will not add to national total as some records are unable to be geocoded to a State or Territory.

Doses sourced from Australian Immunisation Register, population from ABS ERP June 2021

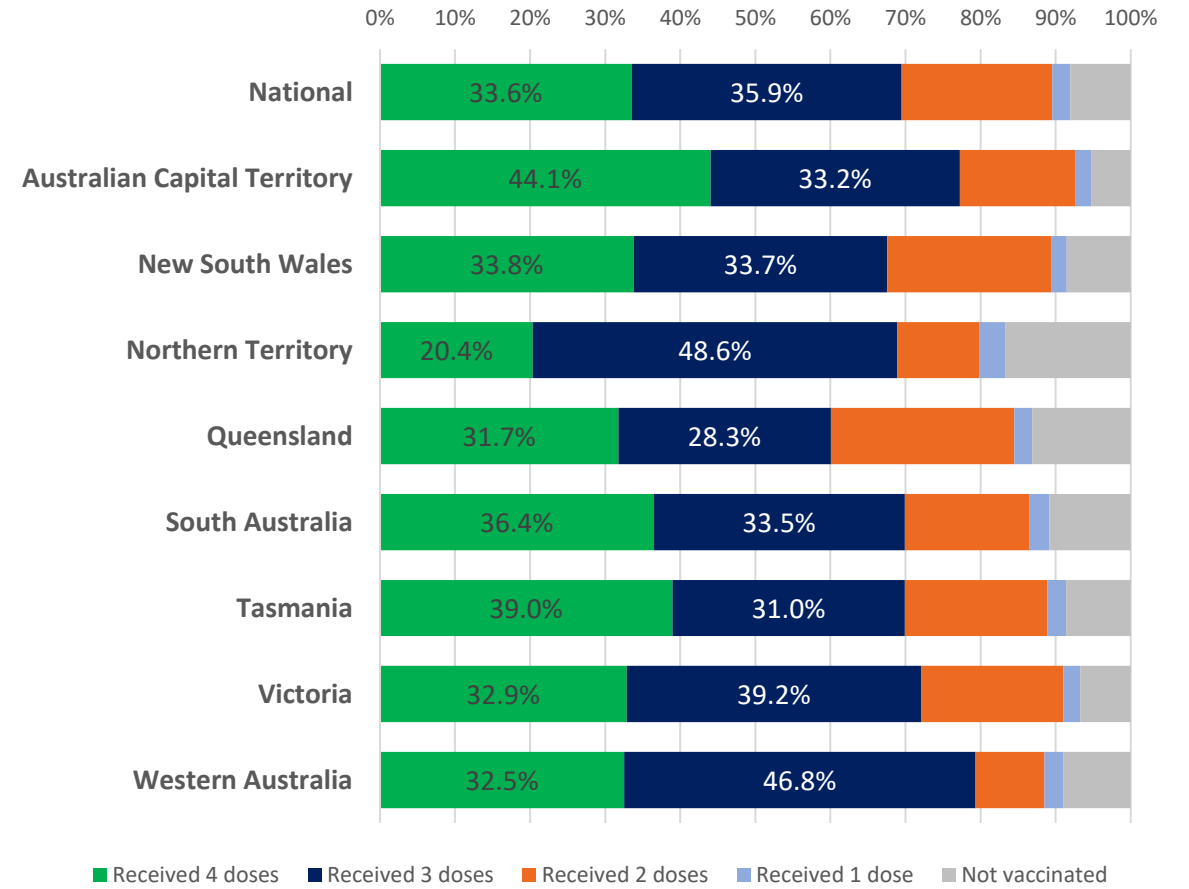
Data as at:
18 Jan 2023
Updated weekly

Vaccinations by age and location

Number of people vaccinated by age

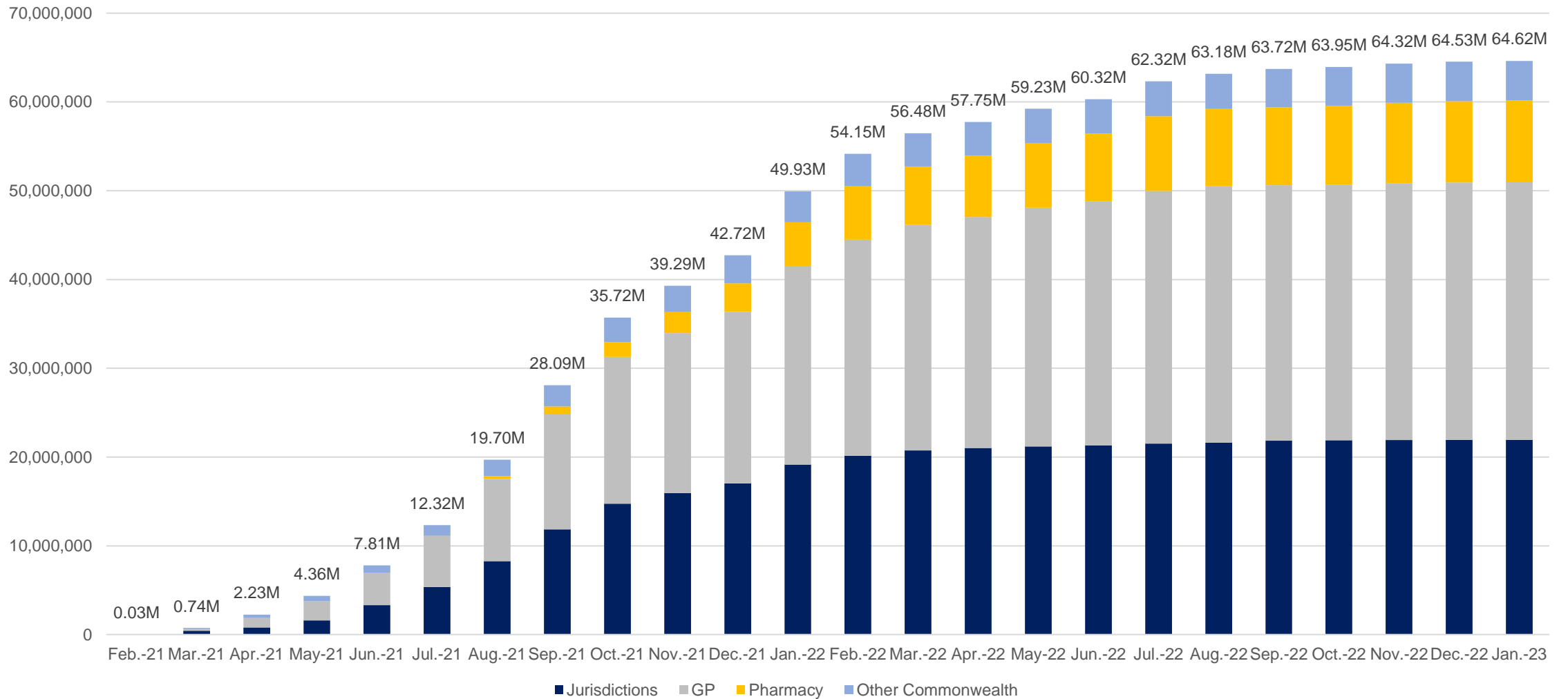


Individuals vaccinated by residential location



Data as at:
18 Jan 2023
Updated weekly

Cumulative doses administered by channel



Source: Australian Immunisation Register

Commonwealth primary care

Data as at:
18 Jan 2023
Updated weekly

Australia's COVID-19
Vaccine Program



Primary care vaccine administration sites#

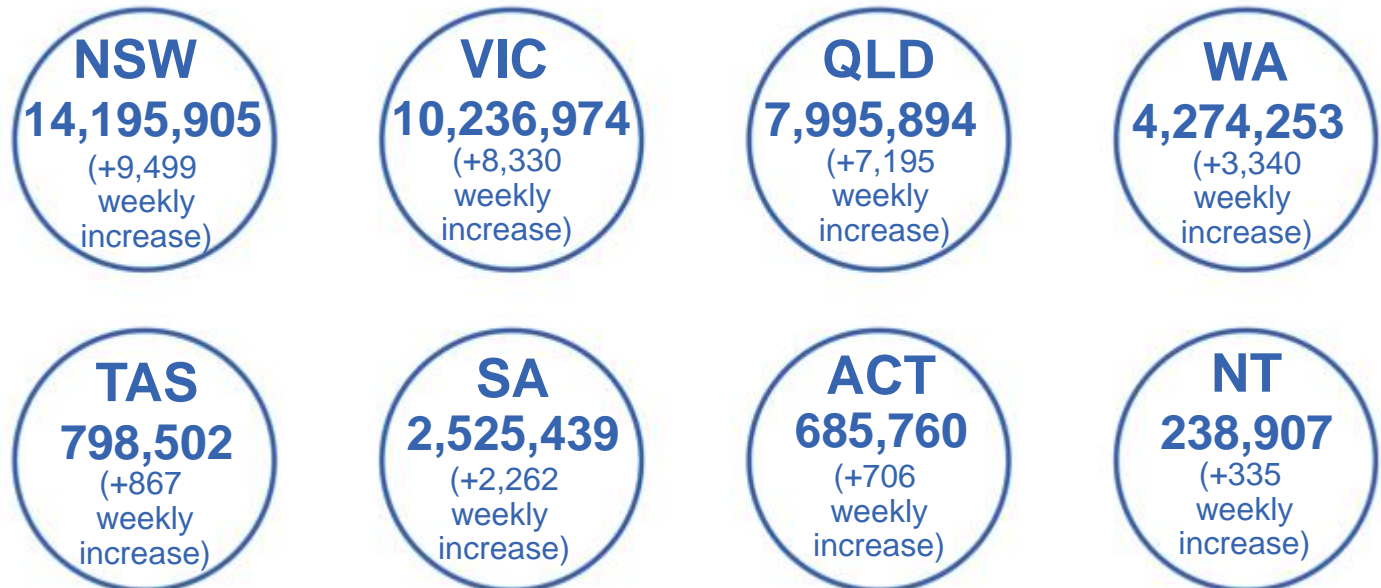
4,846	60	180	3,291
GPs	CVCs	ACCHS	Pharmacies



41,329,309 total vaccine doses administered
in primary care settings
+30,273 weekly increase

Primary care vaccinations by provider type

	Doses administered	Weekly increase
General Practice*	32,045,484	14,143
Pharmacy	9,283,825	16,130



377,675 doses administered to persons residing in other territories or with missing residential information

*General practice includes Commonwealth Vaccination Clinics, Aboriginal Community Health Centres, Royal Flying Doctor Service and other Commonwealth vaccination facilities
Primary care site numbers are reported as at 26 December 2022 and are based on the number of sites participating in the rollout

Source: Australian Immunisation Register

Aboriginal and Torres Strait Islander peoples

Number of people vaccinated

Data as at:
18 Jan 2023
Updated weekly

Australia's COVID-19
Vaccine Program



People (16+) with at least one dose

451,486 **85.5%**

People (16+) with at least two doses

434,309 **82.3%**



Eligible people (16+) with three doses

245,182 **56.6%**

Eligible people (30+) with four doses

65,453 **35.1%**



People (12-15) with at least one dose

45,434 **64.6%**

People (12-15) with at least two doses

39,128 **55.6%**

96 Aboriginal community controlled health services (ACCHS) sites

1	17	12	32	14	2	6	12
ACT	NSW	NT	QLD	SA	TAS	VIC	WA

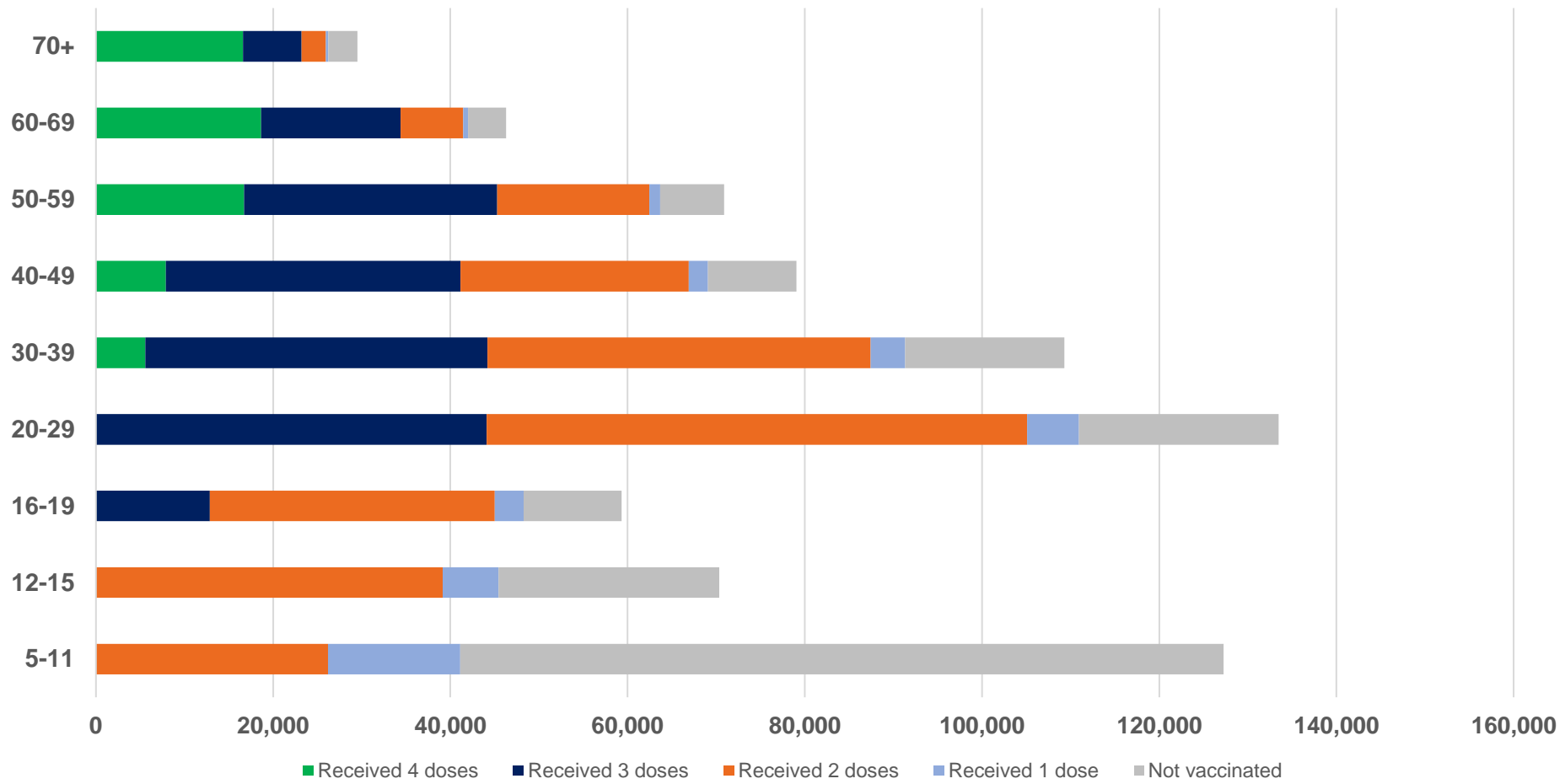
Residential State	Individuals Dose 1 % (16+)	Individuals Dose 2 % (16+)	Individuals Dose 3 % Eligible (aged 16+)	Individuals Dose 4 % Eligible (aged 30+)
ACT	92.2%	90.1%	65.6%	42.8%
NSW	87.9%	86.1%	53.2%	37.9%
NT	90.2%	86.3%	70.5%	26.4%
QLD	82.4%	78.9%	49.2%	37.8%
SA	81.3%	76.3%	61.1%	38.5%
TAS	89.3%	86.9%	60.2%	42.1%
VIC	90.9%	89.0%	62.5%	36.5%
WA	87.6%	82.3%	66.5%	30.0%
Unknown/Other Territories	73.1%	68.0%	51.4%	24.6%
National Coverage %	85.5%	82.3%	56.6%	35.1%
Number with a Dose	451,486	434,309	245,182	65,453
Total / Eligible Population	527,845	527,845	433,526	186,338

Identifying as Aboriginal and Torres Strait Islander is optional and the estimated population may be under reported. Numbers include all Aboriginal and Torres Strait Islander peoples who have received a vaccination, and are not limited to those administered in an ACCHS setting. The total population refers to the number of individuals that identify as Aboriginal and Torres Strait Islander in the Australian Immunisation Register, while the eligible population refers to the number of these individuals who meet the criteria for a further dose (based on completion of previous doses, age, and time period elapsed since last dose). Please note there may be people under 30 who are eligible, but these are not included in coverage rates or population to protect privacy.

Data as at:
18 Jan 2023
Updated weekly

Aboriginal and Torres Strait Islander peoples

Number of people vaccinated by age



Source: Australian Immunisation Register

Individuals with Culturally and Linguistically Diverse (CALD) backgrounds data

Data as at:
11 December 2022
Updated weekly

Australia's COVID-19
Vaccine Program

People over the age of 16

CALD population *	Total number of individuals in cohort	% People with at least one dose	% People who received two doses	% of eligible people who received three or more doses
General population	20,629,070	>95.0%	>95.0%	72.4%
People born overseas	4,296,355	94.7%	94.2%	73.6%
Speaks a language other than English at home	3,980,422	94.2%	93.6%	69.5%

	General population			Born Overseas			Speaks a language other than English at home		
	% with at least one dose	% who received two doses	% of eligible people who received three or more doses	% with at least one dose	% who received two doses	% of eligible people who received three or more doses	% with at least one dose	% who received two doses	% of eligible people who received three or more doses
ACT	>95.0%	>95.0%	80.8%	>95.0%	>95.0%	79.3%	>95.0%	>95.0%	76.7%
NSW	>95.0%	>95.0%	70.4%	>95.0%	94.5%	71.1%	94.2%	93.6%	66.4%
NT	88.5%	86.6%	79.7%	>95.0%	>95.0%	88.4%	94.5%	94.0%	87.1%
Qld	93.1%	91.7%	65.4%	92.3%	91.7%	68.2%	92.6%	91.9%	64.8%
SA	93.5%	91.8%	76.2%	93.0%	92.1%	75.8%	91.9%	90.9%	72.1%
Tas	>95.0%	93.6%	74.7%	93.9%	93.4%	76.7%	94.0%	93.4%	72.8%
Vic	>95.0%	>95.0%	74.4%	>95.0%	94.9%	73.7%	94.8%	94.3%	69.8%
WA	>95.0%	>95.0%	83.5%	>95.0%	94.7%	85.7%	>95.0%	94.8%	83.8%

*Individuals with Culturally and Linguistically Diverse (CALD) backgrounds are as reported in the 2021 Census, excluding those who have since departed Australia; deceased persons; those born in the UK, Ireland or NZ; and Aboriginal and/or Torres Strait Islander peoples. There is overlap across CALD cohorts where individuals may have reported they had more than one CALD characteristic in the 2021 Census.

Small negative changes may appear when compared with the previous report due to perturbation, in particular for small population groups.

Source: Australian Immunisation Register linked to the Multi-Agency Data Integration Project (Census 2021 characteristics). Coverage rates for the general population are as published for 14 December 2022.

Data as at:
19 Jan 2023
Updated weekly

Residential aged care vaccination rollout



170,579
Aged care residents with at least one dose



169,315
Aged care residents with at least two doses



163,211
Aged care residents with at least three doses



134,816
Aged care residents with at least four doses



>99%

Aged care workers with at least two doses nationally

Aged care resident vaccinations

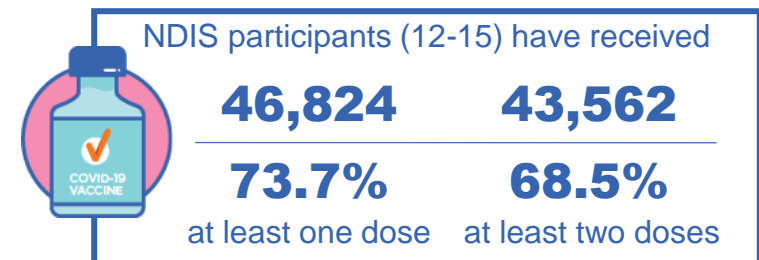
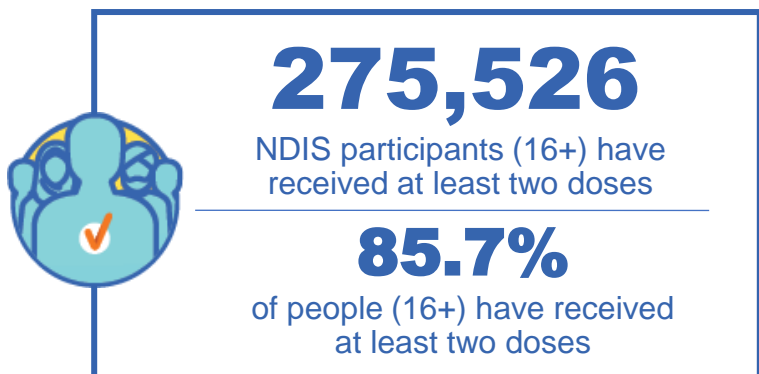
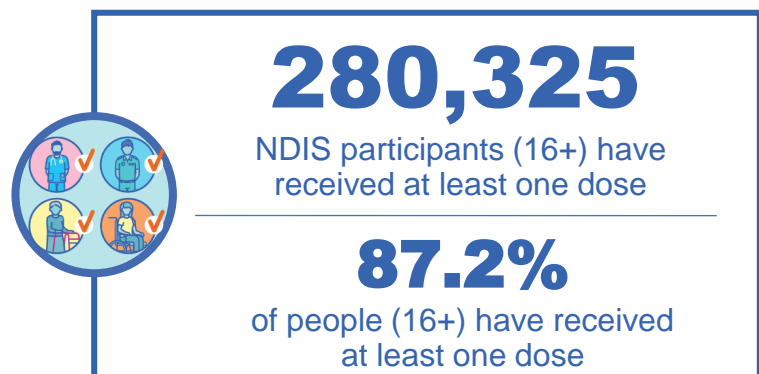
	Aged care residents with at least one dose	Aged care residents with at least two doses	Aged care residents with at least three doses	Aged care residents with at least four doses
NSW	97.0%	96.3%	92.7%	75.1%
VIC	96.9%	96.4%	93.5%	80.6%
QLD	95.1%	94.4%	90.5%	73.4%
SA	96.0%	94.8%	91.2%	75.0%
WA	96.9%	96.1%	92.3%	74.4%
TAS	96.0%	95.1%	92.1%	77.1%
NT	96.9%	95.1%	90.7%	73.1%
ACT	98.0%	97.5%	95.1%	83.1%
National	96.5%	95.8%	92.3%	76.2%

Source: Residential aged care provider self-reported COVID-19 vaccination information and matched AIR data of residents in permanent residential RACFs.

National Disability Insurance Scheme (NDIS) reported vaccinations

Data as at:
14 Jan 2023
Updated weekly

Australia's COVID-19
Vaccine Program



NDIS participant vaccinations

	% People aged 16+ with at least one dose	% People aged 16+ with at least two doses	% People aged 16+ with three doses	% People aged 16+ with four doses
ACT	89.6%	88.5%	83.5%	39.5%
NSW	87.7%	86.4%	75.0%	35.6%
NT	78.1%	75.8%	78.7%	27.7%
QLD	85.1%	83.5%	71.0%	29.8%
SA	85.1%	83.2%	77.9%	31.5%
TAS	87.6%	85.8%	76.2%	32.4%
VIC	88.4%	87.0%	77.1%	33.3%
WA	88.6%	86.9%	81.6%	33.7%
National	87.2%	85.7%	75.8%	33.2%

Source: Linkage between National Disability Insurance Agency data and the Australian Immunisation Register. 'Total' NDIS Participant number last obtained as at 14 January 2023. Australian Immunisation Register data as at 14 January 2023. Includes all participants regardless of residence type.

Explanatory Notes

The Australian Immunisation Register (AIR). The Australian Immunisation Register is a national register that records all vaccines given to all people in Australia.

People received at least x dose/s. The count of unique people who have received at least x dose/s of a COVID-19 vaccine. People with at least x dose/s encompasses people who received x dose/s or more. Please note, to capture a person's current level of protection, this methodology includes any doses an individual received overseas where they have been uploaded into the Australian Immunisation Register, and where the vaccine brand is recognised by the TGA. Some people may not be included in this count where they are viewed as no longer in scope of the vaccination rollout (for example, where a person has permanently left Australia or they have passed away).

Coverage calculations. First and second dose rates are calculated by taking the number of unique people who have received the corresponding dose from the Australian Immunisation Register and dividing this by the Australian Bureau of Statistics Estimated Residential Population (2021). For doses that are third in sequence or above, the coverage rates often refer to the *eligible* population – that is, the number of people with the dose over the number of people who meet the criteria for that dose in the Australian Immunisation Register. Vaccine coverage uses the state of residence (based on a person's Medicare address).

Eligible population. Eligible population refers to the number of these individuals who meet the criteria for a given dose based on completion of previous doses, age, and time period elapsed since last dose. Please note that the Australian Immunisation Register can not identify immunocompromised individuals.

Vaccine doses administered. The total number of COVID-19 doses administered refers to the number of doses administered rather than the number of people who have received a COVID-19 vaccine. In most cases (unless otherwise specified) all doses are included (regardless of age of recipient or the dose number), and when these numbers are provided by state, it is typically the state that the dose was physically administered in as opposed to the state where the person resides on a usual basis.

Aboriginal and Torres Strait Islander Peoples. The Aboriginal and Torres Strait Islander population refers to the number of individuals that identify as Aboriginal and Torres Strait Islander in the Australian Immunisation Register. Identifying as Aboriginal and Torres Strait Islander is optional and the estimated population may be under reported. Numbers include all Aboriginal and Torres Strait Islander peoples who have received a vaccination, and are not limited to those administered in an ACCHS setting.

Update Information: Vaccine data is sourced from the Australian Immunisation Register as at 11:59pm 18 January 2023 unless otherwise noted.