



Australian Government
Department of Health and Aged Care

COVID-19 Vaccine Roll-out

05 January 2023

Data as at:
04 Jan 2023
Updated weekly

Total vaccine doses



64,549,484 total vaccine
doses administered

+28,445 weekly increase



20,090,919

people (16+) have received at
least one dose (>95%)

19,804,610

people (16+) have received at
least two doses (>95%)



14,328,433

people (16+) have received
three doses



5,392,913

people (16+) have received
four doses

NSW
20,015,383
(+8,081 weekly
increase)

VIC
16,799,543
(+7,230 weekly
increase)

QLD
12,175,475
(+4,420 weekly
increase)

WA
7,026,840
(+2,846 weekly
increase)

TAS
1,466,816
(+512 weekly
increase)

SA
4,498,728
(+1,592 weekly
increase)

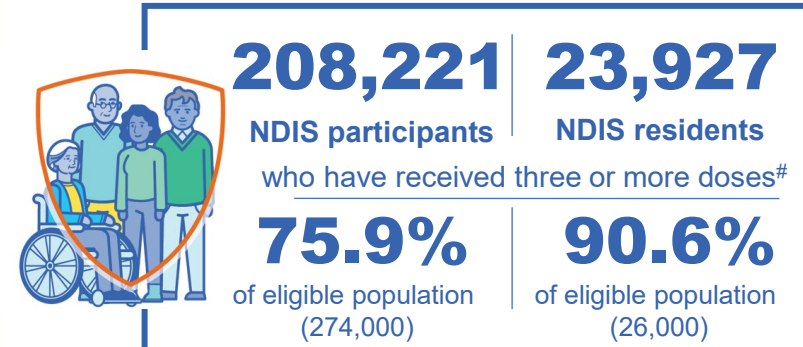
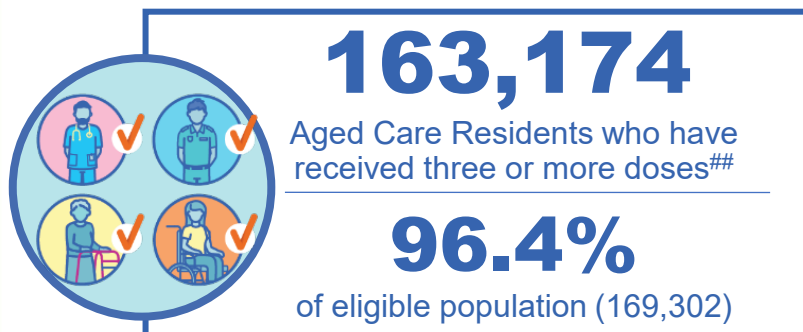
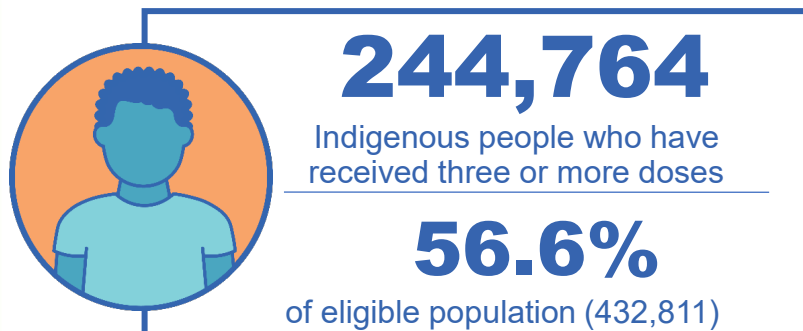
ACT
1,941,889
(+3,604 weekly
increase)

NT
624,810
(+160 weekly
increase)

*Administration state breakdown indicates state in which a vaccine was administered

Data as at:
04 Jan 2023##
Updated weekly

Third Doses



14,328,433 total people who have
received three or more doses

+2,474 weekly increase

72.4% of eligible population (19,794,764)

	Number of People	Weekly Increase	% of Eligible
ACT	281,616	63	80.9%
NSW	4,391,260	650	70.5%
NT	133,127	<10	79.7%
QLD	2,497,260	1,138	65.4%
SA	1,028,166	163	76.2%
TAS	325,309	48	74.7%
VIC	3,804,242	700	74.4%
WA	1,733,175	233	83.5%

*People may belong to multiple groups and could be represented in the above breakdowns multiple times.
#NDIS participants data as at 31 December 2022. ##Aged Care Residents data as at 5 January 2023.

Source: Australian Immunisation Register

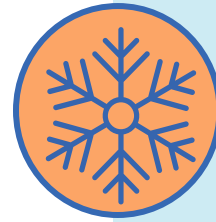
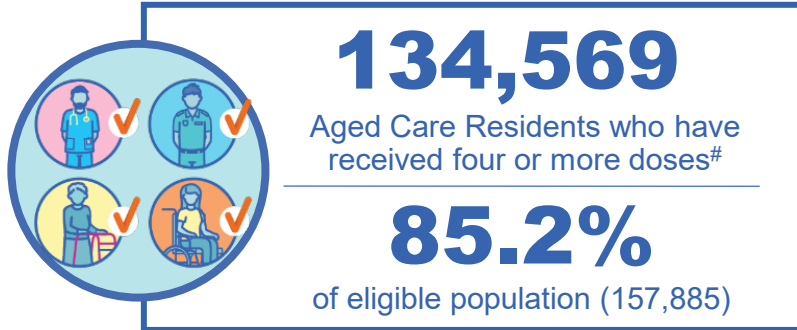
134,278

doses administered to persons
residing in other territories or with
missing residential information

Fourth Doses

Data as at:
04 Jan 2023#
Updated weekly

Australia's COVID-19
Vaccine Program



5,392,913
+11,965
44.3%
3,039,600
76.2%

total people (16+) who have received four doses

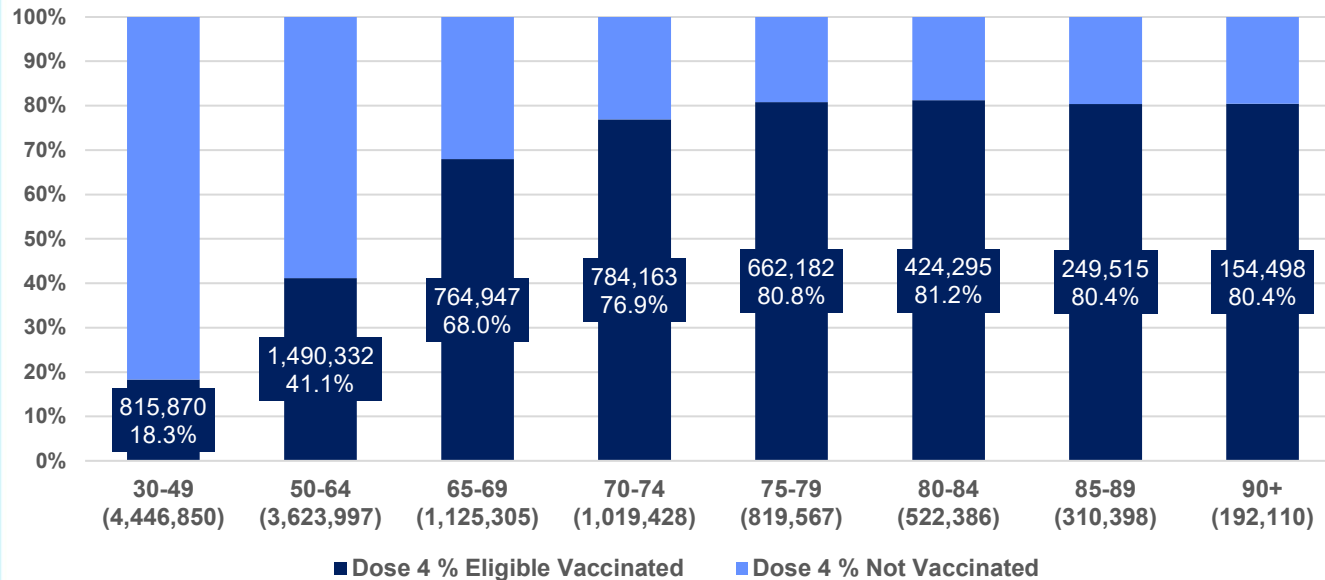
weekly increase (16+)

of eligible population (30+) (12,060,041)

total people (65+) who have received four doses

of eligible population (65+) (3,989,194)

% Individuals eligible vaccinated by current age



	Number of People 16+	Weekly Increase
ACT	118,936	453
NSW	1,719,654	3,381
NT	29,027	85
QLD	1,024,672	2,003
SA	422,756	696
TAS	144,080	263
VIC	1,345,777	3,460
WA	555,706	1,674

32,305

doses administered to persons residing in other territories or with missing residential information

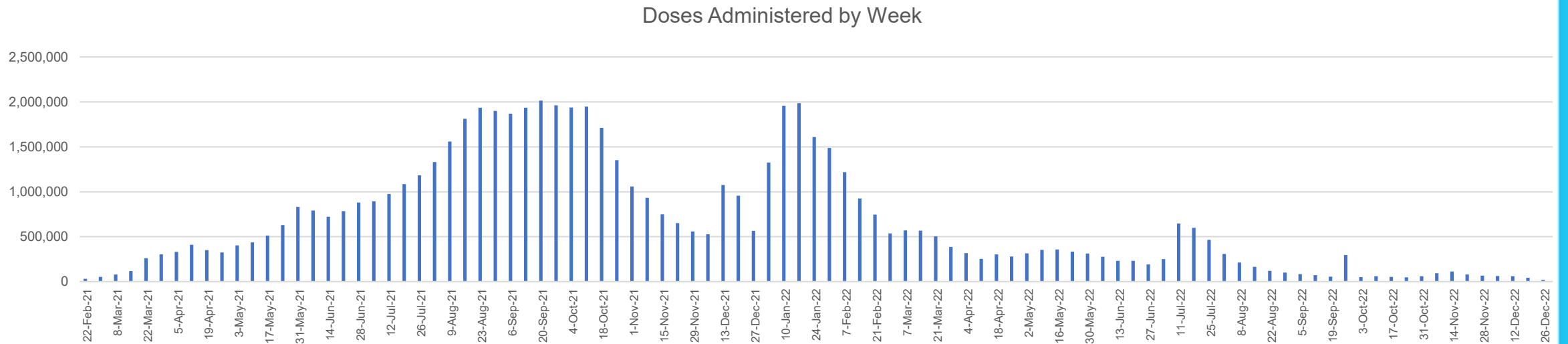
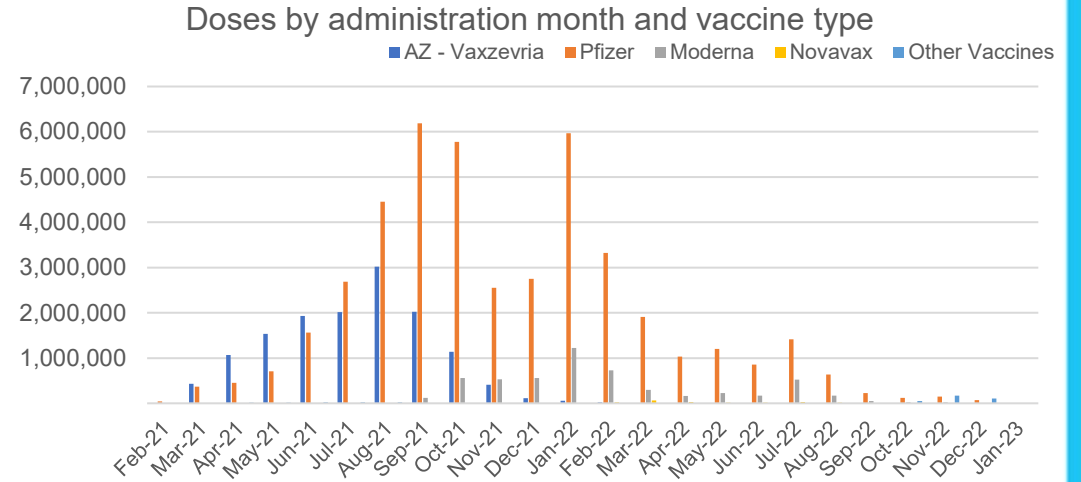
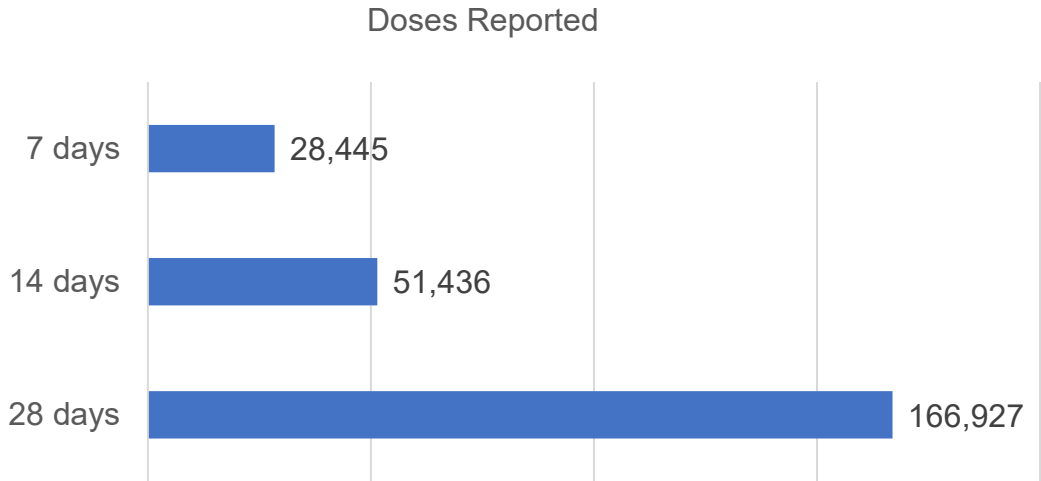
*People become eligible for a fourth dose three months after their third dose. Individuals may belong to multiple groups and could be represented in the above multiple times.

#Aged Care Residents data as at 5 January 2023.

Source: Australian Immunisation Register

Vaccine milestone charts

Data as at:
04 Jan 2023
Updated weekly



*Sourced from the Australian Immunisation Register.

Data as at:
04 Jan 2023
Updated weekly

Doses by age and jurisdiction

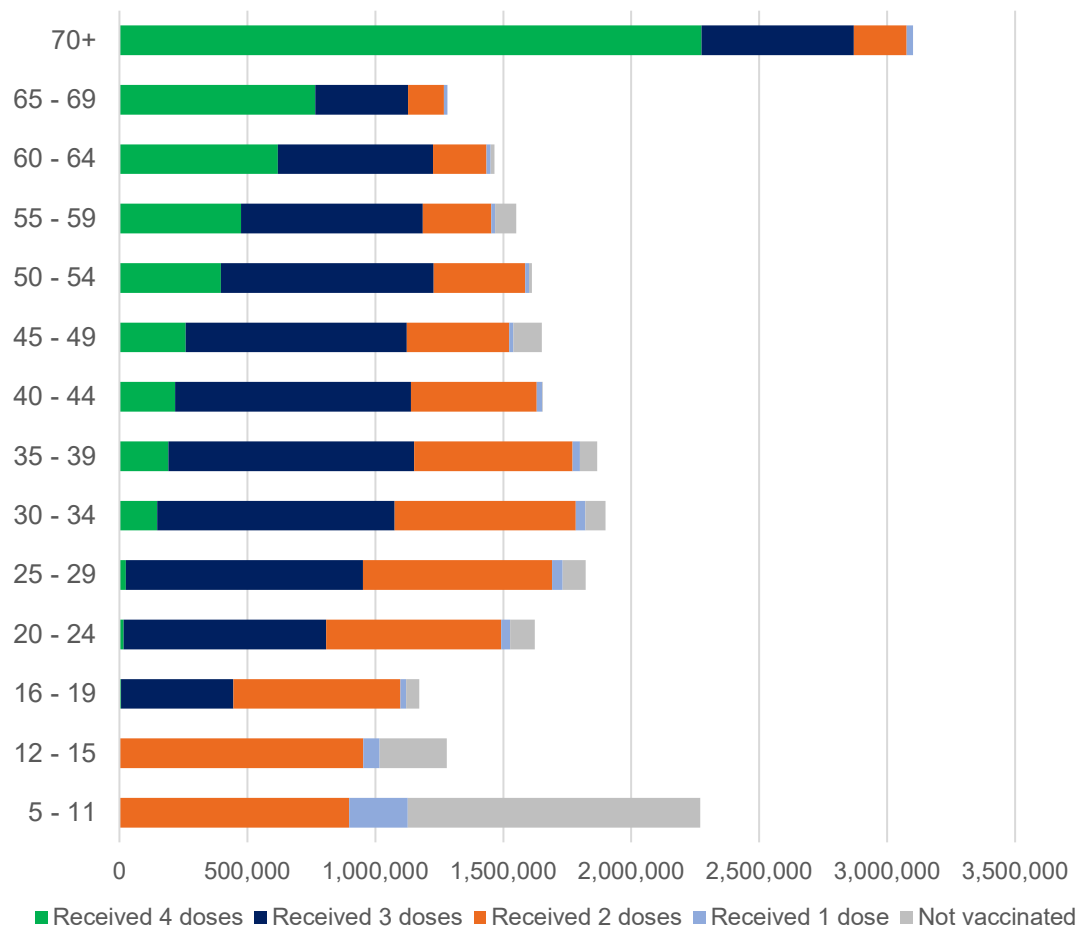
	AUS	ACT	NSW	NT	QLD	SA	TAS	VIC	WA
5 to 11 - dose 1	1,127,222	30,400	338,243	11,820	193,848	78,615	26,624	306,550	131,149
5 to 11 - dose 2	898,072	27,052	278,337	8,488	149,092	63,196	22,232	243,602	100,844
5 to 11 - population	2,269,663	40,719	711,525	25,120	476,567	149,048	45,549	568,488	252,235
5 to 11 % with dose 1	49.66%	74.66%	47.54%	47.05%	40.68%	52.74%	58.45%	53.92%	51.99%
5 to 11 % with dose 2	39.57%	66.44%	39.12%	33.79%	31.28%	42.40%	48.81%	42.85%	39.98%
12 to 15 - dose 1	1,017,099	20,021	312,128	10,192	197,655	66,380	22,089	265,384	112,531
12 to 15 - dose 2	952,619	19,406	296,072	9,118	182,580	62,116	20,767	250,831	103,023
12 to 15 - population	1,279,387	20,888	399,352	13,190	278,225	85,541	27,469	313,711	140,783
12 to 15 % with dose 1	79.50%	95.85%	78.16%	77.27%	71.04%	77.60%	80.41%	84.60%	79.93%
12 to 15 % with dose 2	74.46%	92.91%	74.14%	69.13%	65.62%	72.62%	75.60%	79.96%	73.18%
16 and over - dose 1	20,090,919	353,492	6,317,213	171,087	3,877,326	1,376,174	443,383	5,174,187	2,103,699
16 and over - dose 2	19,804,610	348,420	6,233,463	167,236	3,820,535	1,350,772	435,749	5,112,054	2,077,459
16 and over - dose 3	14,328,433	281,616	4,391,260	133,127	2,497,260	1,028,166	325,309	3,804,242	1,733,175
16 and over - population	20,629,070	364,811	6,504,442	193,211	4,161,009	1,471,062	465,436	5,279,175	2,185,967
16 and over % with dose 1	97.39%	96.90%	97.12%	88.55%	93.18%	93.55%	95.26%	98.01%	96.24%
16 and over % with dose 2	96.00%	95.51%	95.83%	86.56%	91.82%	91.82%	93.62%	96.83%	95.04%
16 and over % with dose 3	69.46%	77.20%	67.51%	68.90%	60.02%	69.89%	69.89%	72.06%	79.29%
30 and over - dose 1	15,712,998	273,756	4,966,727	126,817	3,029,597	1,093,986	352,302	4,039,299	1,647,868
30 and over - dose 2	15,523,880	270,293	4,909,678	124,643	2,993,849	1,078,482	347,523	3,996,225	1,630,892
30 and over - dose 3	12,124,782	231,021	3,747,073	104,883	2,171,759	879,265	281,367	3,178,987	1,429,945
30 and over - dose 4	5,345,802	117,415	1,703,274	28,443	1,017,475	420,346	143,064	1,332,294	551,780
30 and over - population	16,012,407	268,806	5,065,001	140,954	3,219,394	1,157,853	368,927	4,079,079	1,709,089
30 and over % with dose 1	98.13%	>99%	98.06%	89.97%	94.10%	94.48%	95.49%	>99%	96.42%
30 and over % with dose 2	96.95%	>99%	96.93%	88.43%	92.99%	93.14%	94.20%	97.97%	95.42%
30 and over % with dose 3	75.72%	85.94%	73.98%	74.41%	67.46%	75.94%	76.27%	77.93%	83.67%
30 and over % with dose 4	33.39%	43.68%	33.63%	20.18%	31.60%	36.30%	38.78%	32.66%	32.29%
65 and over - dose 1	4,381,818	64,430	1,416,704	20,438	851,494	349,553	114,619	1,093,675	430,559
65 and over - dose 2	4,344,126	63,658	1,404,601	20,184	845,353	346,920	113,932	1,083,740	427,625
65 and over - dose 3	3,997,337	60,392	1,280,359	18,390	777,230	325,507	107,588	989,614	406,202
65 and over - dose 4	3,039,600	50,850	967,558	11,892	603,824	256,526	86,521	734,406	307,413
65 and over - population	4,313,779	60,463	1,393,416	21,593	864,448	352,458	116,037	1,072,562	431,884
65 and over % with dose 1	>99%	>99%	>99%	94.65%	98.50%	>99%	98.78%	>99%	>99%
65 and over % with dose 2	>99%	>99%	>99%	93.47%	97.79%	98.43%	98.19%	>99%	>99%
65 and over % with dose 3	92.66%	>99%	91.89%	85.17%	89.91%	92.35%	92.72%	92.27%	94.05%
65 and over % with dose 4	70.46%	84.10%	69.44%	55.07%	69.85%	72.78%	74.56%	68.47%	71.18%

*National population will not equal sum of listed jurisdictions due to a small number of people counted in national population residing in some 'other' territories. Sum of state doses will not add to national total as some records are unable to be geocoded to a State or Territory.

Doses sourced from Australian Immunisation Register, population from ABS ERP June 2021

Vaccinations by age and location

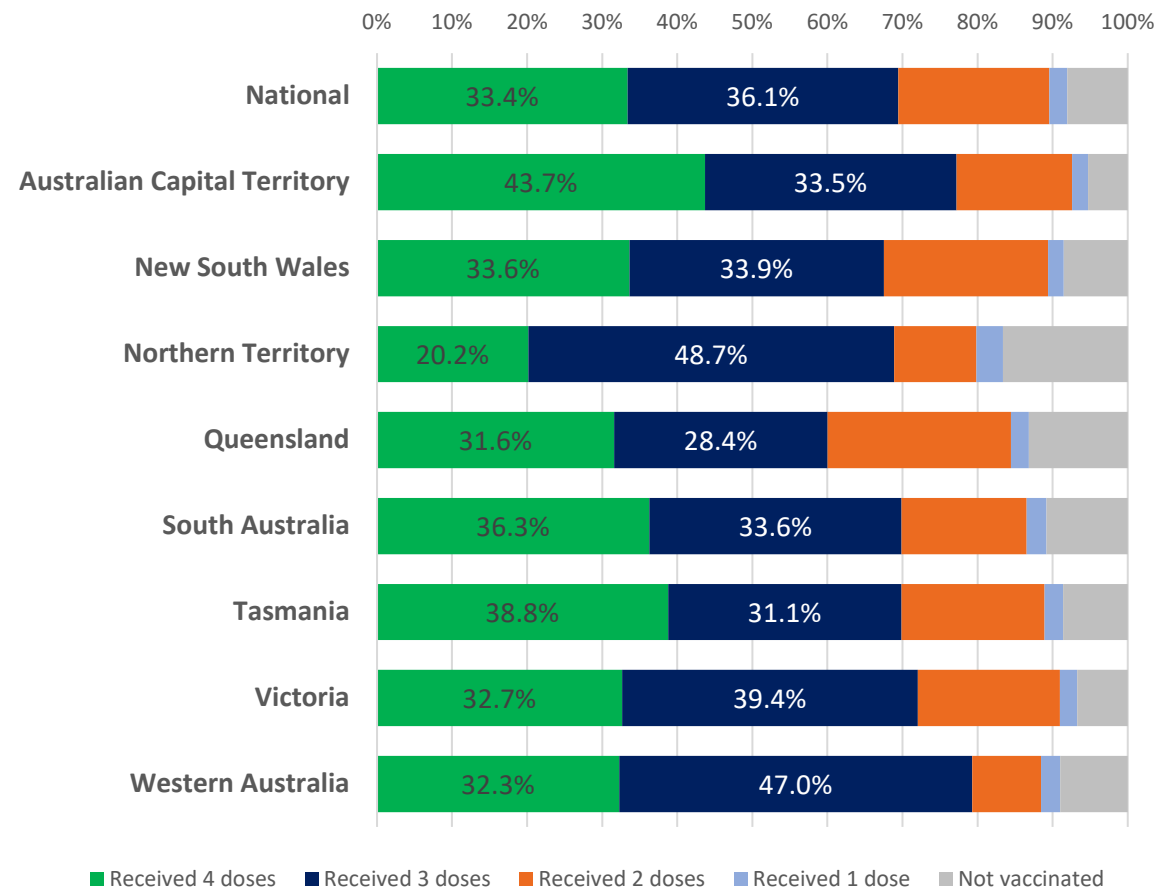
Number of people vaccinated by age



Data as at:
04 Jan 2023
Updated weekly

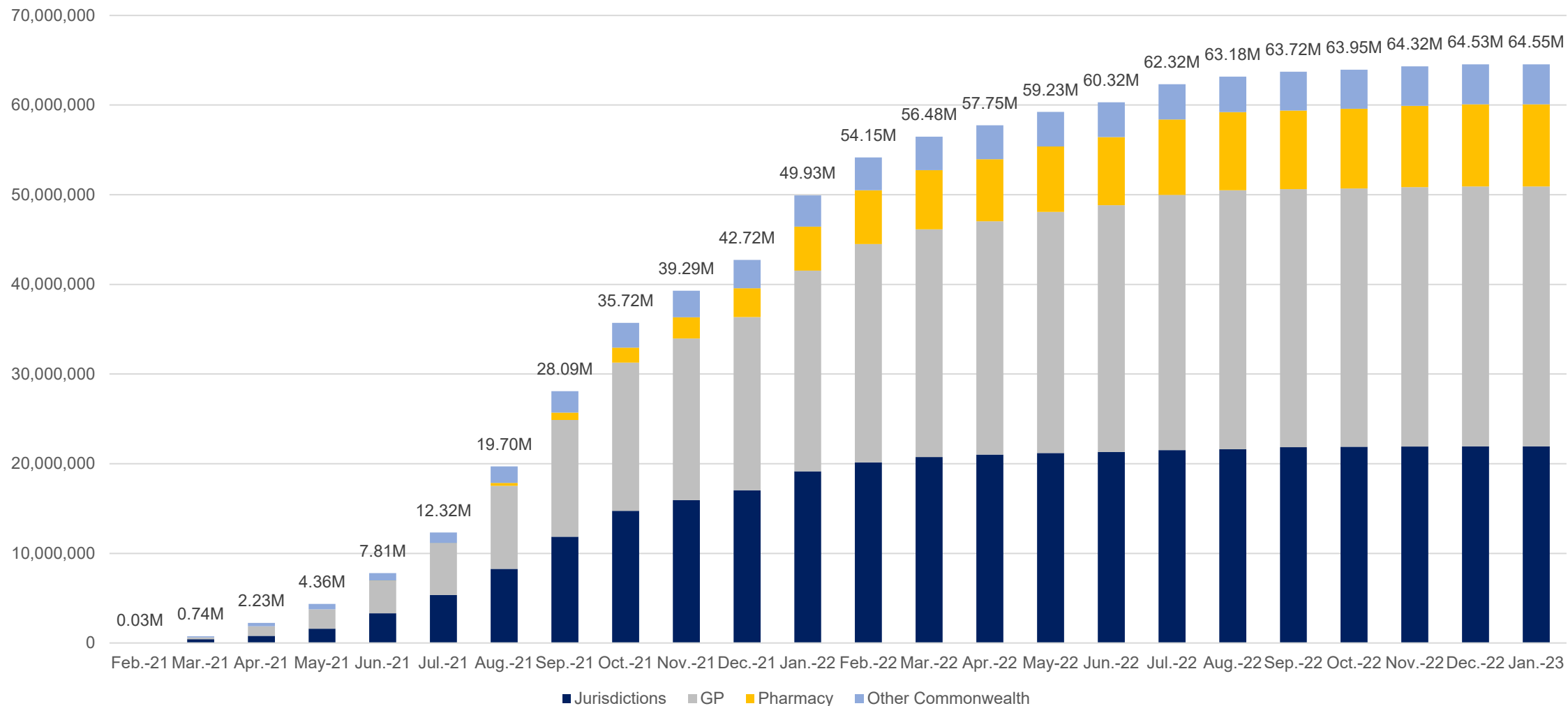
Australia's COVID-19
Vaccine Program

Individuals vaccinated by residential location



Cumulative doses administered by channel

Data as at:
04 Jan 2023
Updated weekly



Source: Australian Immunisation Register

Commonwealth primary care

Data as at:
04 Jan 2023
Updated weekly



Primary care vaccine administration sites

4,846	60	180[#]	3,291
GPs	CVCs	ACCHS	Pharmacies



41,266,324 total vaccine doses administered
in primary care settings
+25,072 weekly increase

Primary care vaccinations by provider type

	Doses administered	Weekly increase
General Practice*	32,018,121	8,947
Pharmacy	9,248,203	16,125

NSW
14,177,401
(+7,294
weekly
increase)

VIC
10,220,352
(+7,288
weekly
increase)

QLD
7,982,278
(+5,512
weekly
increase)

WA
4,267,063
(+3,211
weekly
increase)

TAS
797,015
(+586
weekly
increase)

SA
2,521,199
(+1,547
weekly
increase)

ACT
684,164
(+801
weekly
increase)

NT
238,424
(+80
weekly
increase)

378,428

doses administered to persons
residing in other territories or with
missing residential information

*General practice includes Commonwealth Vaccination Clinics, Aboriginal Community Health Centres, Royal Flying Doctor Service and other Commonwealth vaccination facilities

[#] Primary care site numbers are reported as at 26 December 2022 and are based on the number of sites participating in the rollout.

Aboriginal and Torres Strait Islander peoples

Number of people vaccinated

Data as at:
04 Jan 2023
Updated weekly

Australia's COVID-19
Vaccine Program



People (16+) with at least one dose

450,864 85.5%

People (16+) with at least two doses

433,705 82.3%



Eligible people (16+) with three doses

244,764 56.6%

Eligible people (30+) with four doses

65,121 35.1%



People (12-15) with at least one dose

45,643 64.8%

People (12-15) with at least two doses

39,373 55.9%

108 Aboriginal community controlled health services (ACCHS) sites

1 ACT	27 NSW	16 NT	35 QLD	8 SA	2 TAS	7 VIC	12 WA
----------	-----------	----------	-----------	---------	----------	----------	----------

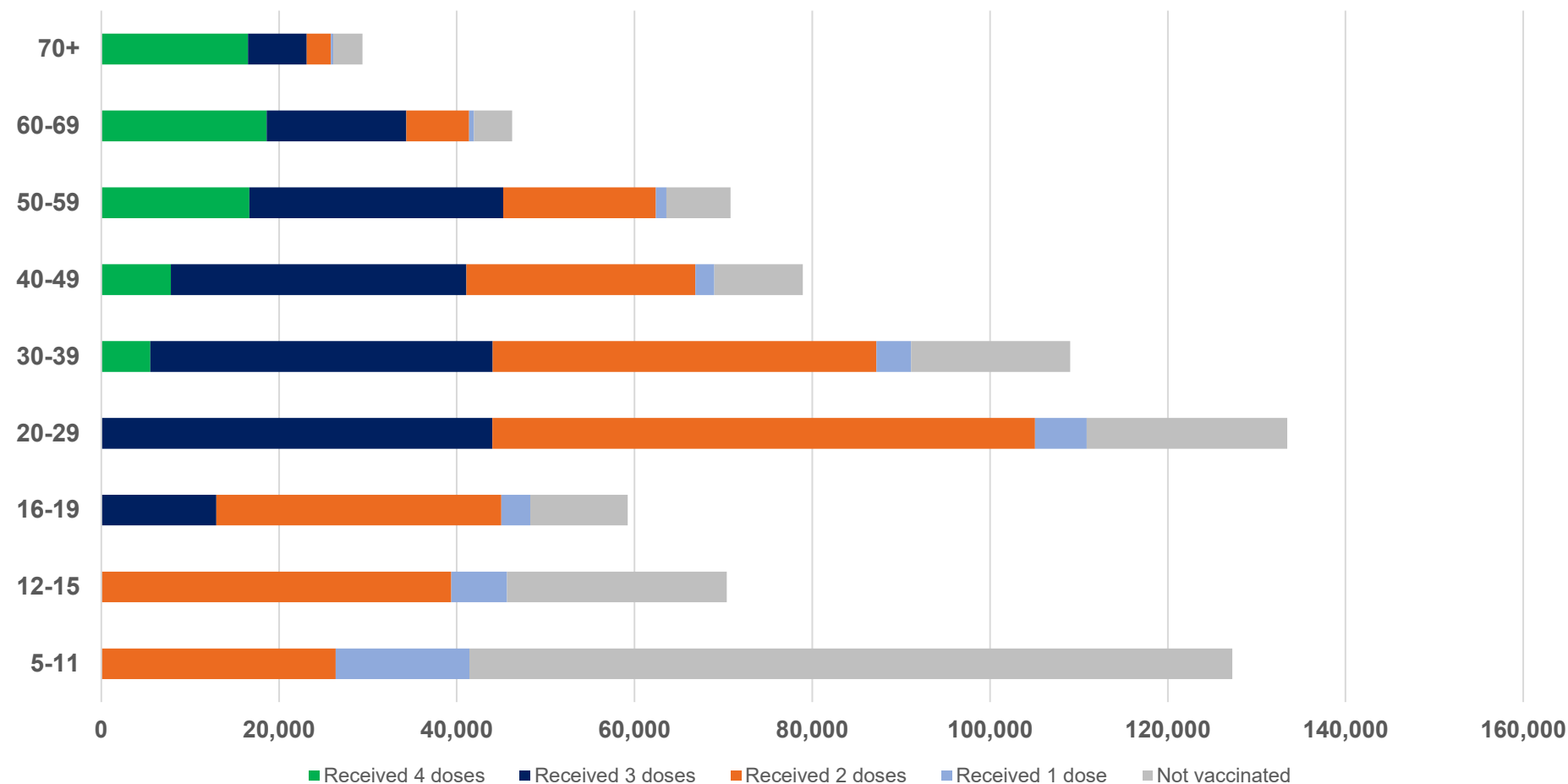
Residential State	Individuals Dose 1 % (16+)	Individuals Dose 2 % (16+)	Individuals Dose 3 % Eligible (aged 16+)	Individuals Dose 4 % Eligible (aged 30+)
ACT	92.2%	90.0%	65.6%	42.7%
NSW	87.9%	86.1%	53.2%	37.9%
NT	90.2%	86.3%	70.4%	26.3%
QLD	82.4%	78.9%	49.2%	37.7%
SA	81.3%	76.2%	61.2%	38.5%
TAS	89.3%	86.9%	60.2%	42.0%
VIC	90.9%	89.0%	62.5%	36.4%
WA	87.6%	82.3%	66.5%	30.0%
Unknown/Other Territories	73.1%	68.0%	51.4%	24.5%
National Coverage %	85.5%	82.3%	56.6%	35.1%
Number with a Dose	450,864	433,705	244,764	65,121
Total / Eligible Population	527,079	527,079	432,811	185,606

Identifying as Aboriginal and Torres Strait Islander is optional and the estimated population may be under reported. Numbers include all Aboriginal and Torres Strait Islander peoples who have received a vaccination, and are not limited to those administered in an ACCHS setting. The total population refers to the number of individuals that identify as Aboriginal and Torres Strait Islander in the Australian Immunisation Register, while the eligible population refers to the number of these individuals who meet the criteria for a further dose (based on completion of previous doses, age, and time period elapsed since last dose). Please note there may be people under 30 who are eligible, but these are not included in coverage rates or population to protect privacy.

Aboriginal and Torres Strait Islander peoples

Number of people vaccinated by age

Data as at:
04 Jan 2023
Updated weekly



Source: Australian Immunisation Register

Individuals with Culturally and Linguistically Diverse (CALD) backgrounds data

People over the age of 16

Data as at:
11 December 2022
Updated weekly

Australia's COVID-19
Vaccine Program

CALD population *	Total number of individuals in cohort	% People with at least one dose	% People who received two doses	% of eligible people who received three or more doses
General population	20,629,070	>95.0%	>95.0%	72.4%
People born overseas	4,296,355	94.7%	94.2%	73.6%
Speaks a language other than English at home	3,980,422	94.2%	93.6%	69.5%

	General population			Born Overseas			Speaks a language other than English at home		
	% with at least one dose	% who received two doses	% of eligible people who received three or more doses	% with at least one dose	% who received two doses	% of eligible people who received three or more doses	% with at least one dose	% who received two doses	% of eligible people who received three or more doses
ACT	>95.0%	>95.0%	80.8%	>95.0%	>95.0%	79.3%	>95.0%	>95.0%	76.7%
NSW	>95.0%	>95.0%	70.4%	>95.0%	94.5%	71.1%	94.2%	93.6%	66.4%
NT	88.5%	86.6%	79.7%	>95.0%	>95.0%	88.4%	94.5%	94.0%	87.1%
Qld	93.1%	91.7%	65.4%	92.3%	91.7%	68.2%	92.6%	91.9%	64.8%
SA	93.5%	91.8%	76.2%	93.0%	92.1%	75.8%	91.9%	90.9%	72.1%
Tas	>95.0%	93.6%	74.7%	93.9%	93.4%	76.7%	94.0%	93.4%	72.8%
Vic	>95.0%	>95.0%	74.4%	>95.0%	94.9%	73.7%	94.8%	94.3%	69.8%
WA	>95.0%	>95.0%	83.5%	>95.0%	94.7%	85.7%	>95.0%	94.8%	83.8%

*Individuals with Culturally and Linguistically Diverse (CALD) backgrounds are as reported in the 2021 Census, excluding those who have since departed Australia; deceased persons; those born in the UK, Ireland or NZ; and Aboriginal and/or Torres Strait Islander peoples. There is overlap across CALD cohorts where individuals may have reported they had more than one CALD characteristic in the 2021 Census.

Small negative changes may appear when compared with the previous report due to perturbation, in particular for small population groups.

Source: Australian Immunisation Register linked to the Multi-Agency Data Integration Project (Census 2021 characteristics). Coverage rates for the general population are as published for 14 December 2022.

Data as at:
05 Jan 2023
Updated weekly

Residential aged care vaccination rollout



170,575

Aged care residents with at least one dose



169,302

Aged care residents with at least two doses



163,174

Aged care residents with at least three doses



134,569

Aged care residents with at least four doses



>99%

Aged care workers with at least two doses nationally

Aged care resident vaccinations

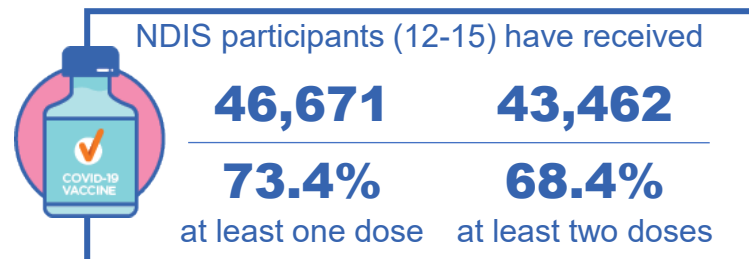
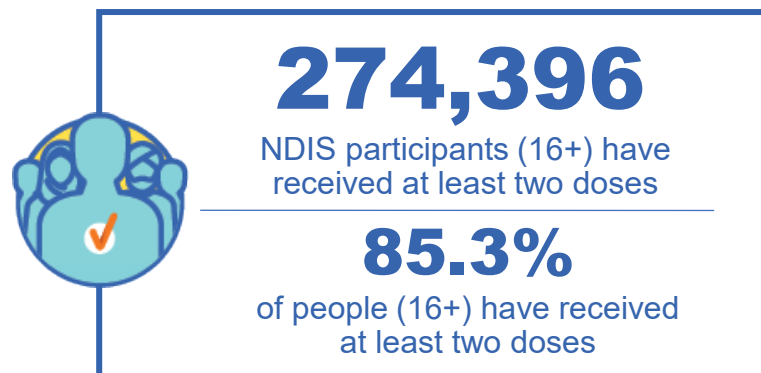
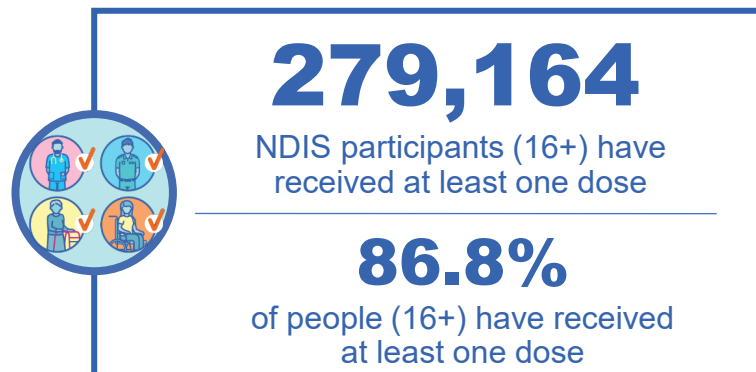
	Aged care residents with at least one dose	Aged care residents with at least two doses	Aged care residents with at least three doses	Aged care residents with at least four doses
NSW	97.0%	96.3%	92.6%	74.9%
VIC	96.9%	96.3%	93.5%	80.5%
QLD	95.1%	94.4%	90.5%	73.3%
SA	96.0%	94.8%	91.2%	74.7%
WA	96.9%	96.1%	92.3%	74.4%
TAS	96.0%	95.1%	92.1%	77.1%
NT	96.9%	95.1%	90.7%	73.1%
ACT	98.0%	97.5%	95.1%	83.0%
National	96.5%	95.8%	92.3%	76.1%

Source: Residential aged care provider self-reported COVID-19 vaccination information and matched AIR data of residents in permanent residential RACFs.

National Disability Insurance Scheme (NDIS) reported vaccinations

Data as at:
02 Jan 2023
Updated weekly

NDIS participant vaccinations



	% People aged 16+ with at least one dose	% People aged 16+ with at least two doses	% People aged 16+ with three doses	% People aged 16+ with four doses
ACT	89.4%	88.2%	83.6%	39.3%
NSW	87.4%	86.1%	75.0%	35.4%
NT	78.2%	75.9%	78.6%	27.7%
QLD	84.7%	83.1%	71.1%	29.6%
SA	84.7%	82.8%	78.0%	31.3%
TAS	87.5%	85.7%	76.2%	32.3%
VIC	88.0%	86.6%	77.2%	33.1%
WA	88.2%	86.5%	81.7%	33.5%
National	86.8%	85.3%	75.9%	33.0%

Source: Linkage between National Disability Insurance Agency data and the Australian Immunisation Register. 'Total' NDIS Participant number last obtained as at 02 January 2023. Australian Immunisation Register data as at 02 January 2023. Includes all participants regardless of residence type.

Explanatory Notes

The Australian Immunisation Register (AIR). The Australian Immunisation Register is a national register that records all vaccines given to all people in Australia.

People received at least x dose/s. The count of unique people who have received at least x dose/s of a COVID-19 vaccine. People with at least x dose/s encompasses people who received x dose/s or more. Please note, to capture a person's current level of protection, this methodology includes any doses an individual received overseas where they have been uploaded into the Australian Immunisation Register, and where the vaccine brand is recognised by the TGA. Some people may not be included in this count where they are viewed as no longer in scope of the vaccination rollout (for example, where a person has permanently left Australia or they have passed away).

Coverage calculations. First and second dose rates are calculated by taking the number of unique people who have received the corresponding dose from the Australian Immunisation Register and dividing this by the Australian Bureau of Statistics Estimated Residential Population (2021). For doses that are third in sequence or above, the coverage rates often refer to the *eligible* population – that is, the number of people with the dose over the number of people who meet the criteria for that dose in the Australian Immunisation Register. Vaccine coverage uses the state of residence (based on a person's Medicare address).

Eligible population. Eligible population refers to the number of these individuals who meet the criteria for a given dose based on completion of previous doses, age, and time period elapsed since last dose. Please note that the Australian Immunisation Register can not identify immunocompromised individuals.

Vaccine doses administered. The total number of COVID-19 doses administered refers to the number of doses administered rather than the number of people who have received a COVID-19 vaccine. In most cases (unless otherwise specified) all doses are included (regardless of age of recipient or the dose number), and when these numbers are provided by state, it is typically the state that the dose was physically administered in as opposed to the state where the person resides on a usual basis.

Aboriginal and Torres Strait Islander Peoples. The Aboriginal and Torres Strait Islander population refers to the number of individuals that identify as Aboriginal and Torres Strait Islander in the Australian Immunisation Register. Identifying as Aboriginal and Torres Strait Islander is optional and the estimated population may be under reported. Numbers include all Aboriginal and Torres Strait Islander peoples who have received a vaccination, and are not limited to those administered in an ACCHS setting.

Update Information: Vaccine data is sourced from the Australian Immunisation Register as at 11:59pm 04 January 2023 unless otherwise noted.