



Australian Government

Department of Health and Aged Care

COVID-19 Vaccine Roll-out

08 December 2022

Data as at:
07 Dec 2022
Updated weekly

Total vaccine doses



64,382,557 total vaccine
doses administered

+62,802 weekly increase



20,073,788

people (16+) have received at
least one dose (>95%)

19,791,123

people (16+) have received at
least two doses (>95%)



14,310,476

people (16+) have received
three doses



5,303,168

people (16+) have received
four doses

NSW
19,963,810
(+19,601 weekly
increase)

VIC
16,756,938
(+15,825 weekly
increase)

QLD
12,149,636
(+9,825 weekly
increase)

WA
7,010,045
(+6,007 weekly
increase)

TAS
1,463,419
(+1,576 weekly
increase)

SA
4,489,780
(+3,810 weekly
increase)

ACT
1,925,407
(+5,525 weekly
increase)

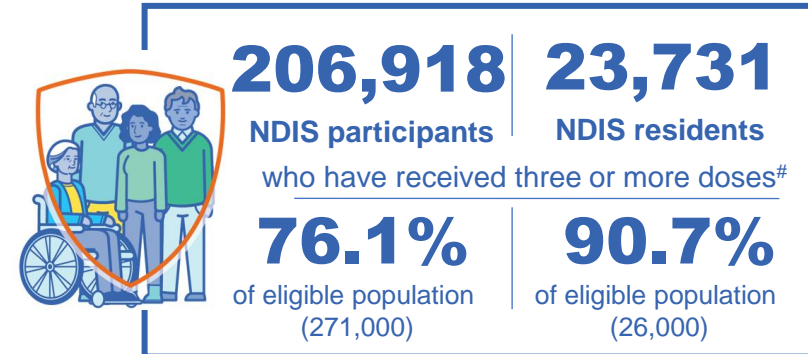
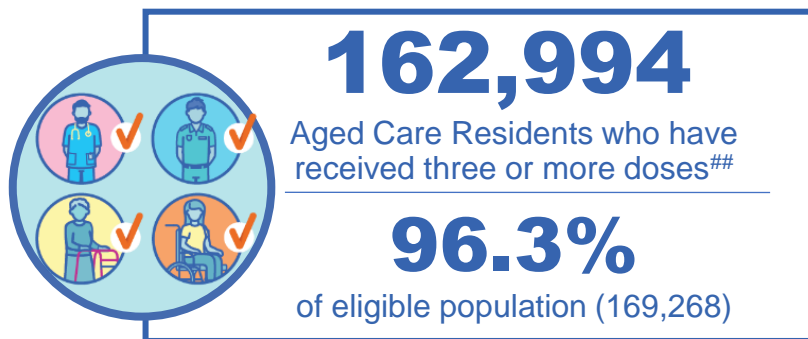
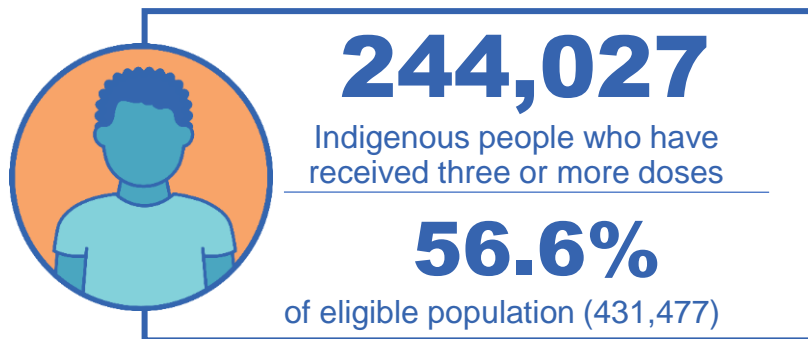
NT
623,522
(+633 weekly
increase)

*Administration state breakdown indicates state in which a vaccine was administered

Source: Australian Immunisation Register

Third Doses

Data as at:
07 Dec 2022##
Updated weekly



14,310,476 total people who have received three or more doses

+7,588 weekly increase

72.4% of eligible population (19,778,873)

	Number of People	Weekly Increase	% of Eligible
ACT	281,256	101	80.8%
NSW	4,385,011	2,855	70.4%
NT	133,139	<10	79.7%
QLD	2,492,110	1,849	65.4%
SA	1,027,135	588	76.2%
TAS	325,066	155	74.7%
VIC	3,799,332	1,414	74.4%
WA	1,731,653	584	83.5%

135,774

doses administered to persons residing in other territories or with missing residential information


*People may belong to multiple groups and could be represented in the above breakdowns multiple times.
#NDIS participants data as at 4 December 2022. ##Aged Care Residents data as at 8 December 2022.

Source: Australian Immunisation Register

Fourth Doses

Data as at:
07 Dec 2022#
Updated weekly

Australia's COVID-19
Vaccine Program



133,359
Aged Care Residents who have received four or more doses#

83.9%
of eligible population (158,880)



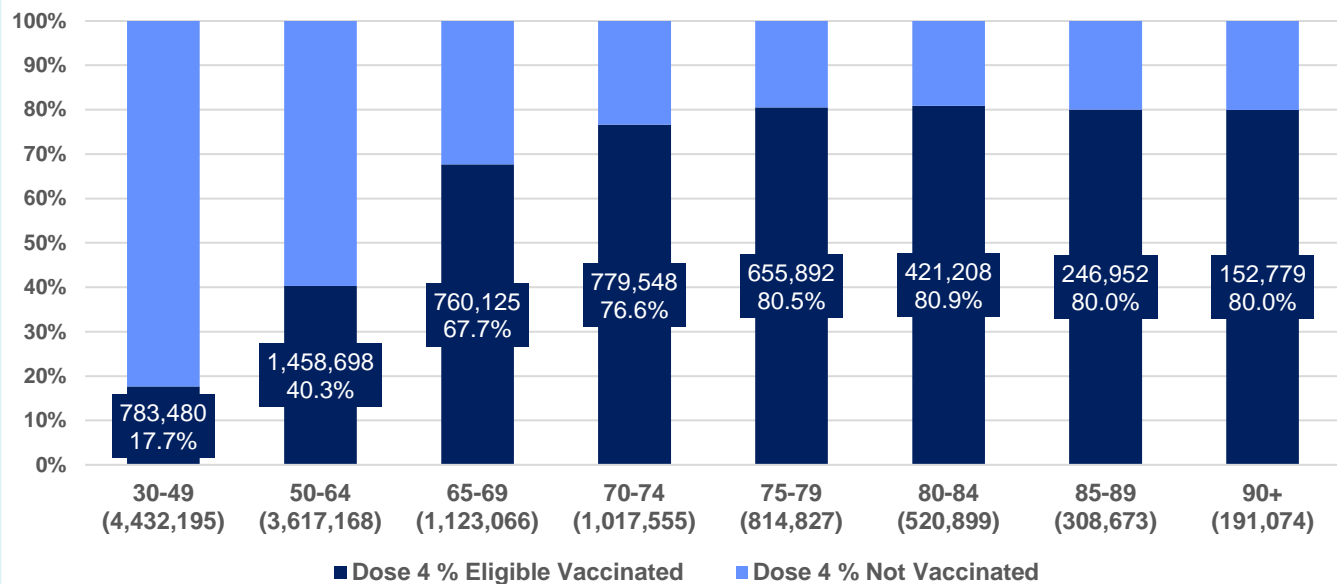
5,303,168
+38,906
43.7%
3,016,504
75.9%

total people (16+) who have received four doses
weekly increase (16+)

of eligible population (30+) (12,025,457)

total people (65+) who have received four doses
of eligible population (65+) (3,976,094)

% Individuals eligible vaccinated by current age



	Number of People 16+	Weekly Increase
ACT	115,826	1,158
NSW	1,691,664	12,429
NT	28,191	450
QLD	1,010,830	5,870
SA	417,805	2,521
TAS	142,001	1,104
VIC	1,320,484	10,602
WA	544,062	4,484

32,305 doses administered to persons residing in other territories or with missing residential information

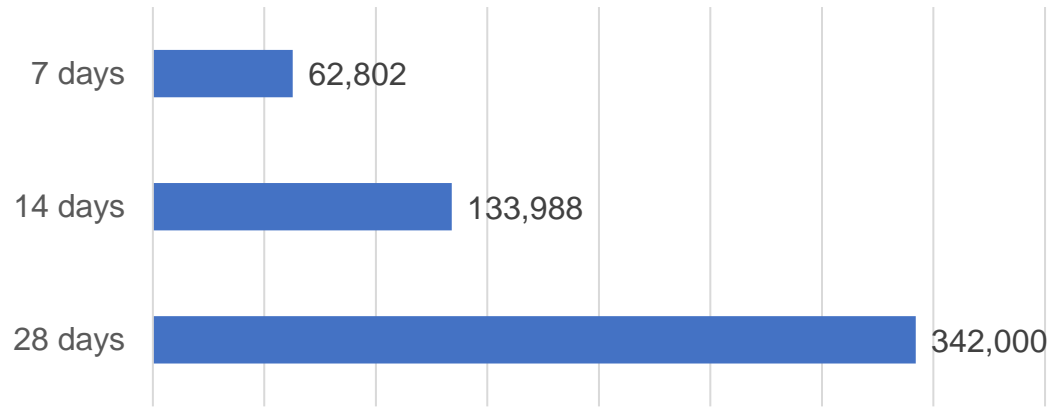
*People become eligible for a fourth dose three months after their third dose. Individuals may belong to multiple groups and could be represented in the above multiple times.
#Aged Care Residents data as at 8 December 2022.

Source: Australian Immunisation Register

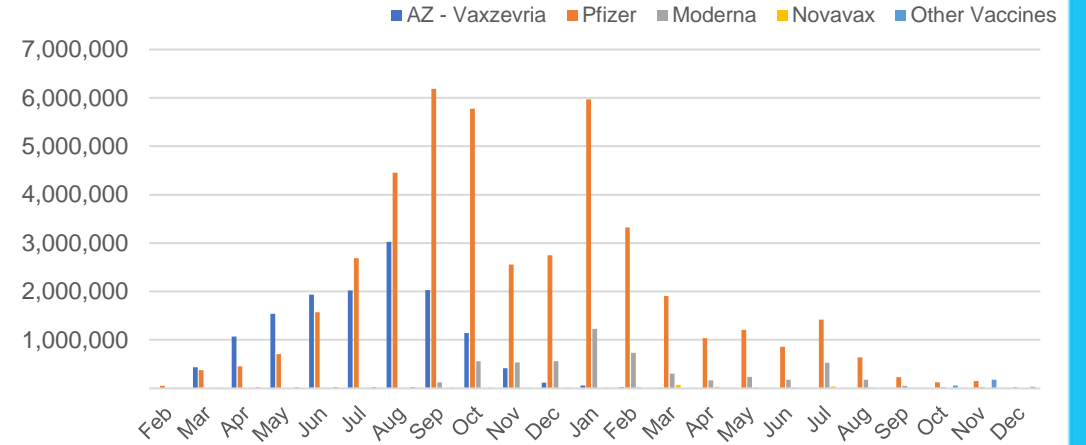
Vaccine milestone charts

Data as at:
07 Dec 2022
Updated weekly

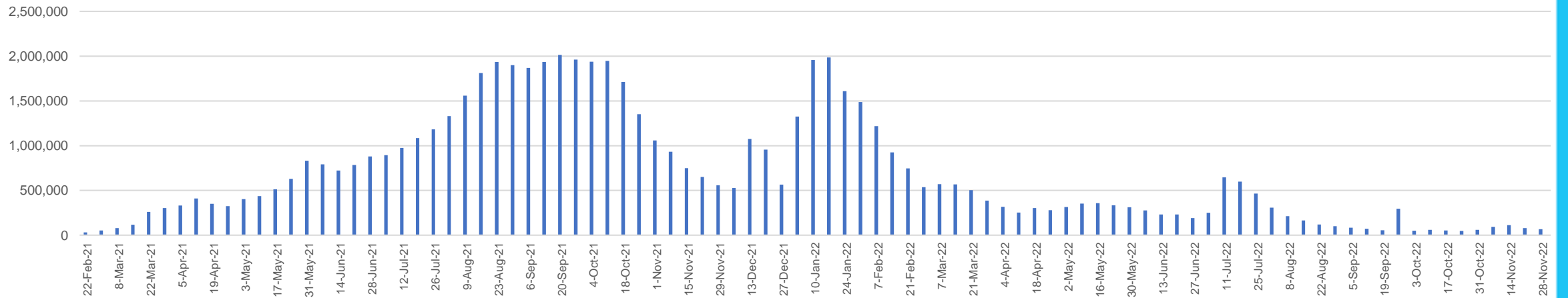
Doses Reported



Doses by administration month and vaccine type



Doses Administered by Week



*Sourced from the Australian Immunisation Register.

Data as at:
07 Dec 2022
Updated weekly

Doses by age and jurisdiction

	AUS	ACT	NSW	NT	QLD	SA	TAS	VIC	WA
5 to 11 - dose 1	1,139,247	30,658	341,689	11,969	195,984	79,513	26,903	309,666	132,597
5 to 11 - dose 2	905,886	27,264	280,584	8,587	150,408	63,848	22,458	245,627	101,777
5 to 11 - population	2,269,663	40,719	711,525	25,120	476,567	149,048	45,549	568,488	252,235
5 to 11 % with dose 1	50.19%	75.29%	48.02%	47.65%	41.12%	53.35%	59.06%	54.47%	52.57%
5 to 11 % with dose 2	39.91%	66.96%	39.43%	34.18%	31.56%	42.84%	49.31%	43.21%	40.35%
12 to 15 - dose 1	1,022,516	20,018	313,735	10,264	198,870	66,737	22,221	266,773	112,925
12 to 15 - dose 2	959,355	19,423	297,979	9,211	184,015	62,551	20,938	252,721	103,580
12 to 15 - population	1,279,387	20,888	399,352	13,190	278,225	85,541	27,469	313,711	140,783
12 to 15 % with dose 1	79.92%	95.83%	78.56%	77.82%	71.48%	78.02%	80.89%	85.04%	80.21%
12 to 15 % with dose 2	74.99%	92.99%	74.62%	69.83%	66.14%	73.12%	76.22%	80.56%	73.57%
16 and over - dose 1	20,073,788	353,146	6,312,726	171,029	3,872,221	1,374,720	443,112	5,168,366	2,101,144
16 and over - dose 2	19,791,123	348,237	6,230,215	167,198	3,815,870	1,349,532	435,504	5,107,563	2,075,151
16 and over - dose 3	14,310,476	281,256	4,385,011	133,139	2,492,110	1,027,135	325,066	3,799,332	1,731,653
16 and over - population	20,629,070	364,811	6,504,442	193,211	4,161,009	1,471,062	465,436	5,279,175	2,185,967
16 and over % with dose 1	97.31%	96.80%	97.05%	88.52%	93.06%	93.45%	95.20%	97.90%	96.12%
16 and over % with dose 2	95.94%	95.46%	95.78%	86.54%	91.71%	91.74%	93.57%	96.75%	94.93%
16 and over % with dose 3	69.37%	77.10%	67.42%	68.91%	59.89%	69.82%	69.84%	71.97%	79.22%
30 and over - dose 1	15,691,057	273,274	4,960,732	126,701	3,024,452	1,092,427	351,870	4,032,203	1,645,236
30 and over - dose 2	15,505,203	269,954	4,904,856	124,538	2,989,051	1,077,098	347,116	3,990,279	1,628,468
30 and over - dose 3	12,104,484	230,582	3,740,946	104,742	2,167,397	877,931	280,950	3,172,825	1,427,570
30 and over - dose 4	5,258,682	114,398	1,676,111	27,630	1,003,975	415,508	141,038	1,307,900	540,384
30 and over - population	16,012,407	268,806	5,065,001	140,954	3,219,394	1,157,853	368,927	4,079,079	1,709,089
30 and over % with dose 1	97.99%	>99%	97.94%	89.89%	93.94%	94.35%	95.38%	98.85%	96.26%
30 and over % with dose 2	96.83%	>99%	96.84%	88.35%	92.85%	93.03%	94.09%	97.82%	95.28%
30 and over % with dose 3	75.59%	85.78%	73.86%	74.31%	67.32%	75.82%	76.15%	77.78%	83.53%
30 and over % with dose 4	32.84%	42.56%	33.09%	19.60%	31.19%	35.89%	38.23%	32.06%	31.62%
65 and over - dose 1	4,368,447	64,186	1,412,437	20,341	848,474	348,433	114,285	1,089,923	429,229
65 and over - dose 2	4,331,875	63,455	1,400,757	20,091	842,481	345,856	113,604	1,080,363	426,358
65 and over - dose 3	3,985,672	60,189	1,276,685	18,300	774,622	324,495	107,256	986,486	404,915
65 and over - dose 4	3,016,504	50,436	960,117	11,742	599,714	254,900	85,874	728,192	304,695
65 and over - population	4,313,779	60,463	1,393,416	21,593	864,448	352,458	116,037	1,072,562	431,884
65 and over % with dose 1	>99%	>99%	>99%	94.20%	98.15%	98.86%	98.49%	>99%	>99%
65 and over % with dose 2	>99%	>99%	>99%	93.04%	97.46%	98.13%	97.90%	>99%	98.72%
65 and over % with dose 3	92.39%	>99%	91.62%	84.75%	89.61%	92.07%	92.43%	91.97%	93.76%
65 and over % with dose 4	69.93%	83.42%	68.90%	54.38%	69.38%	72.32%	74.01%	67.89%	70.55%

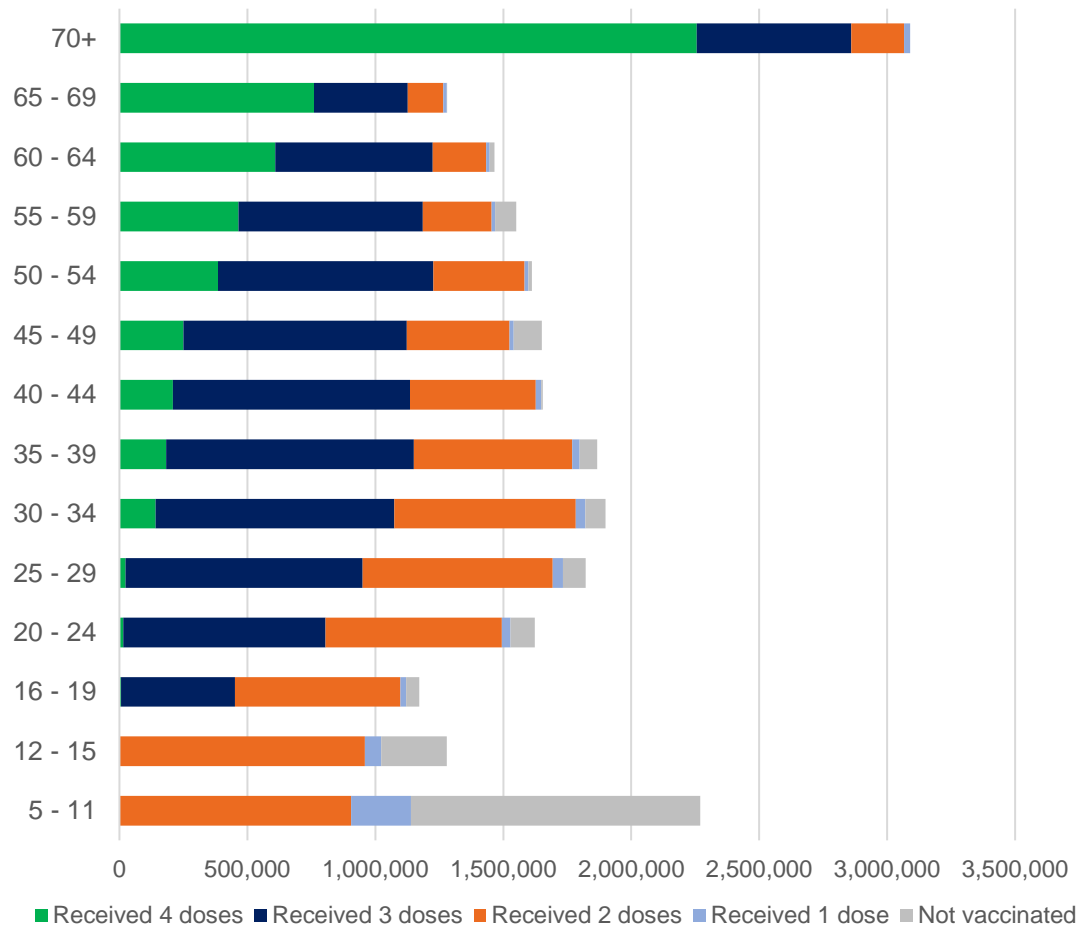
*National population will not equal sum of listed jurisdictions due to a small number of people counted in national population residing in some 'other' territories. Sum of state doses will not add to national total as some records are unable to be geocoded to a State or Territory.

Doses sourced from Australian Immunisation Register, population from ABS ERP June 2021

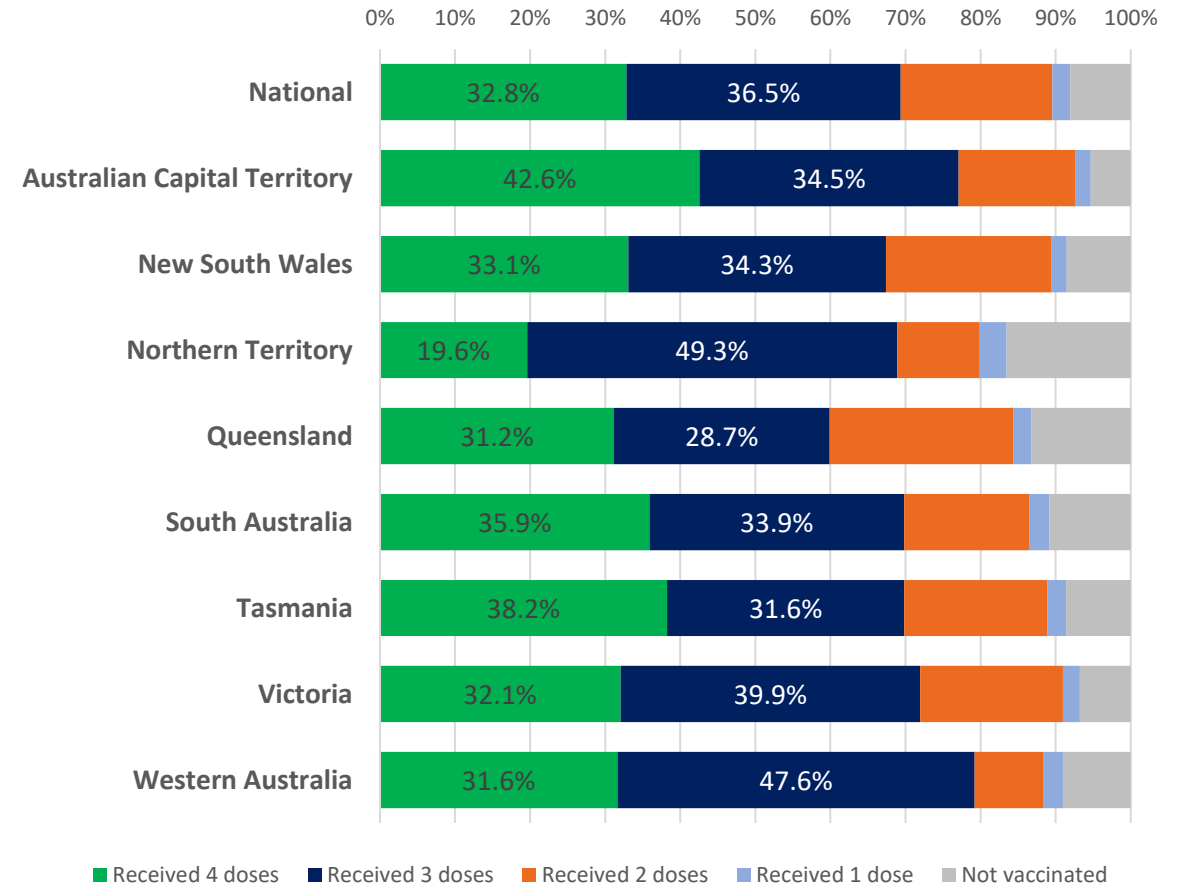
Data as at:
07 Dec 2022
Updated weekly

Vaccinations by age and location

Number of people vaccinated by age

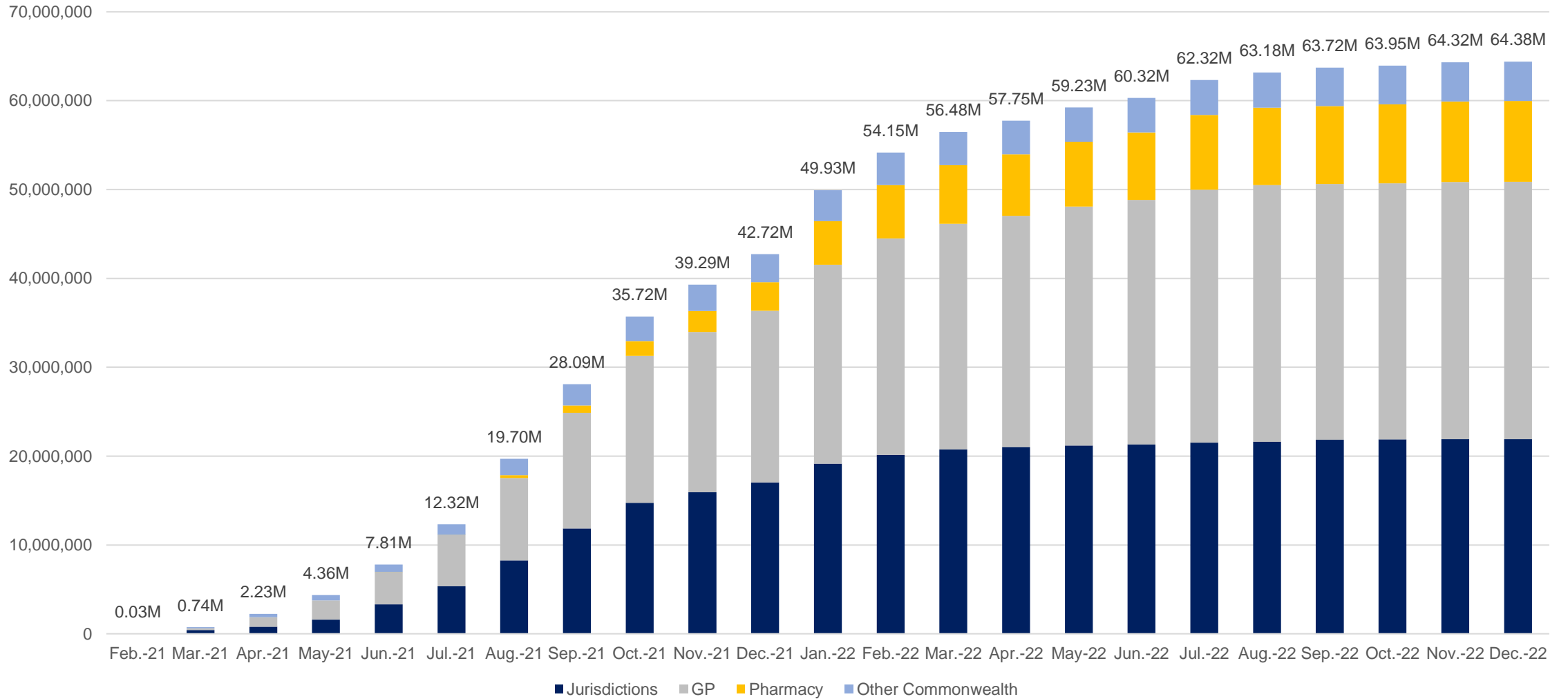


Individuals vaccinated by residential location



Data as at:
07 Dec 2022
Updated weekly

Cumulative doses administered by channel



Source: Australian Immunisation Register

Data as at:
07 Dec 2022
Updated weekly

Commonwealth primary care



Primary care vaccine administration sites#

4,918	81	175	3,304
GPs	CVCs	ACCHS	Pharmacies



41,116,869 total vaccine doses administered
in primary care settings

+56,086 weekly increase

Primary care vaccinations by provider type

	Doses administered	Weekly increase
General Practice*	31,950,885	26,475
Pharmacy	9,165,984	29,611

NSW
14,128,676
(+18,751 weekly increase)

VIC
10,179,802
(+13,549 weekly increase)

QLD
7,953,628
(+10,219 weekly increase)

WA
4,249,878
(+5,863 weekly increase)

TAS
793,484
(+1,648 weekly increase)

SA
2,512,147
(+3,653 weekly increase)

ACT
679,615
(+1,532 weekly increase)

NT
237,520
(+416 weekly increase)

382,119

doses administered to persons residing in other territories or with missing residential information

*General practice includes Commonwealth Vaccination Clinics, Aboriginal Community Health Centres, Royal Flying Doctor Service and other Commonwealth vaccination facilities

Primary care site numbers are reported as at 05 December 2022 and are based on the number of sites participating in the rollout.

Source: Australian Immunisation Register

Aboriginal and Torres Strait Islander peoples

Number of people vaccinated

Data as at:
07 Dec 2022
Updated weekly

Australia's COVID-19
Vaccine Program



People (16+) with at least one dose

449,772 **85.6%**

People (16+) with at least two doses

432,632 **82.3%**



Eligible people (16+) with three doses

244,027 **56.6%**

Eligible people (30+) with four doses

64,074 **34.8%**



People (12-15) with at least one dose

46,007 **65.3%**

People (12-15) with at least two doses

39,818 **56.5%**

136 Aboriginal community controlled health services (ACCHS) sites

0#	28	23	41	13	2	12	17
ACT	NSW	NT	QLD	SA	TAS	VIC	WA

Residential State	Individuals Dose 1 % (16+)	Individuals Dose 2 % (16+)	Individuals Dose 3 % Eligible (aged 16+)	Individuals Dose 4 % Eligible (aged 30+)
ACT	92.2%	90.1%	65.7%	42.2%
NSW	87.9%	86.1%	53.2%	37.8%
NT	90.2%	86.3%	70.5%	25.9%
QLD	82.4%	78.9%	49.2%	37.4%
SA	81.4%	76.2%	61.2%	38.3%
TAS	89.3%	86.9%	60.2%	41.6%
VIC	90.9%	89.0%	62.4%	36.0%
WA	87.6%	82.3%	66.6%	29.8%
Unknown/Other Territories	73.4%	68.3%	51.3%	24.2%
National Coverage %	85.6%	82.3%	56.6%	34.8%
Number with a Dose	449,772	432,632	244,027	64,074
Total / Eligible Population	525,737	525,737	431,477	183,962

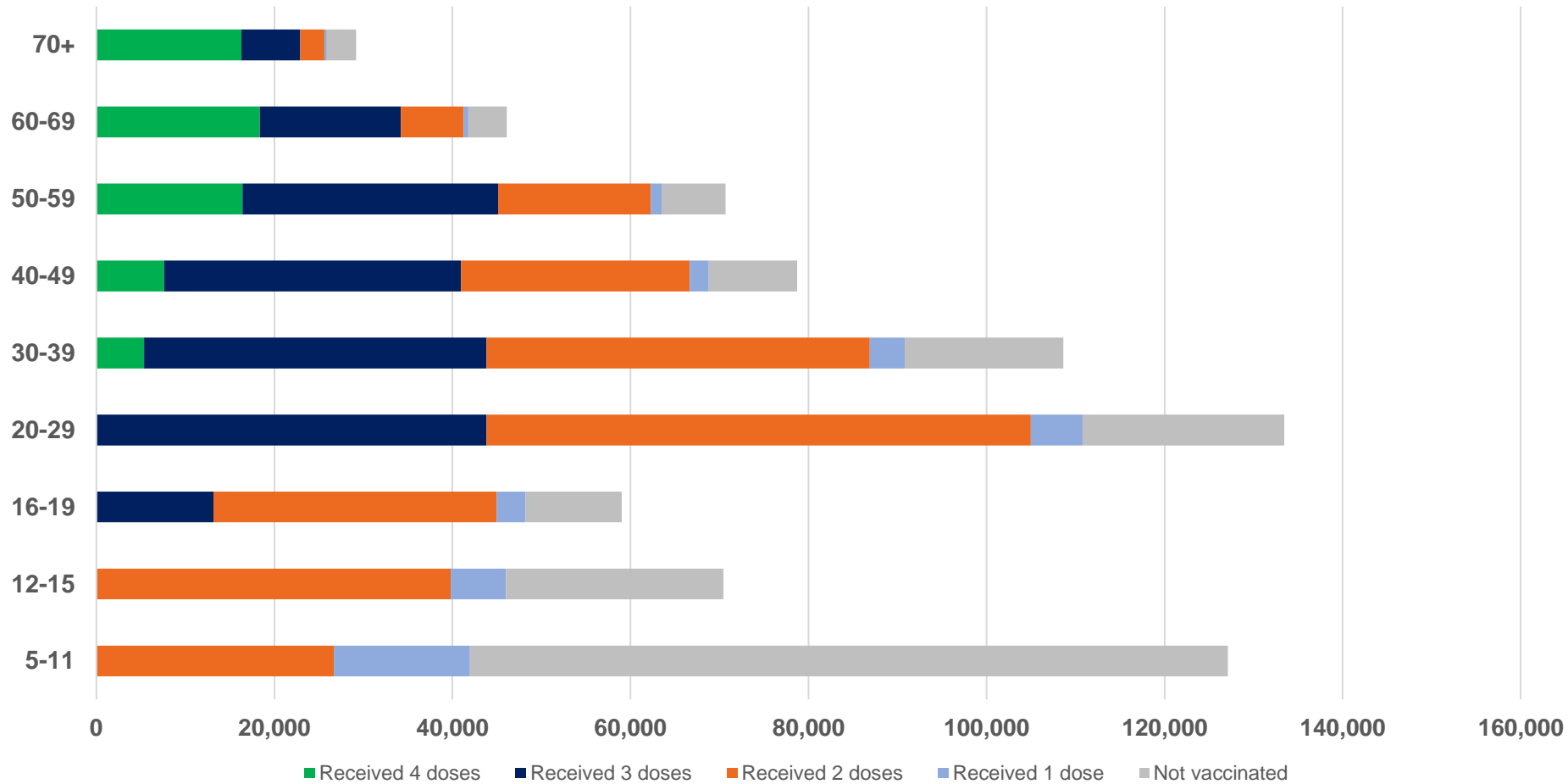
Identifying as Aboriginal and Torres Strait Islander is optional and the estimated population may be under reported. Numbers include all Aboriginal and Torres Strait Islander peoples who have received a vaccination, and are not limited to those administered in an ACCHS setting. The total population refers to the number of individuals that identify as Aboriginal and Torres Strait Islander in the Australian Immunisation Register, while the eligible population refers to the number of these individuals who meet the criteria for a further dose (based on completion of previous doses, age, and time period elapsed since last dose). Please note there may be people under 30 who are eligible, but these are not included in coverage rates or population to protect privacy.

#ACCHS in the ACT are currently operating as Commonwealth Vaccine Clinics so not included to avoid double counting.

Aboriginal and Torres Strait Islander peoples

Number of people vaccinated by age

Data as at:
07 Dec 2022
Updated weekly



Source: Australian Immunisation Register

Individuals with Culturally and Linguistically Diverse (CALD) backgrounds data

Data as at:
27 November 2022
Updated weekly

Australia's COVID-19
Vaccine Program

People over the age of 16

CALD population *	Total number of individuals in cohort	% People with at least one dose	% People who received two doses	% of eligible people who received three or more doses
General population	20,629,070	>95.0%	>95.0%	72.3%
People born overseas	4,310,597	94.7%	94.2%	73.6%
Speaks a language other than English at home	3,990,800	94.3%	93.6%	69.6%

	General population			Born Overseas			Speaks a language other than English at home		
	% with at least one dose	% who received two doses	% of eligible people who received three or more doses	% with at least one dose	% who received two doses	% of eligible people who received three or more doses	% with at least one dose	% who received two doses	% of eligible people who received three or more doses
ACT	>95.0%	>95.0%	80.8%	>95.0%	>95.0%	79.3%	>95.0%	>95.0%	76.7%
NSW	>95.0%	>95.0%	70.4%	>95.0%	94.5%	71.1%	94.3%	93.6%	66.5%
NT	88.6%	86.6%	79.7%	>95.0%	>95.0%	88.5%	94.4%	93.9%	87.3%
Qld	93.0%	91.7%	65.3%	92.3%	91.7%	68.2%	92.6%	91.9%	64.9%
SA	93.4%	91.7%	76.2%	93.0%	92.1%	75.8%	92.0%	91.0%	72.2%
Tas	>95.0%	93.6%	74.7%	93.9%	93.4%	76.6%	94.0%	93.4%	72.7%
Vic	>95.0%	>95.0%	74.4%	>95.0%	94.9%	73.8%	94.9%	94.3%	69.9%
WA	>95.0%	94.9%	83.5%	>95.0%	94.8%	85.8%	>95.0%	94.8%	83.9%

*Individuals with Culturally and Linguistically Diverse (CALD) backgrounds are as reported in the 2021 Census, excluding those who have since departed Australia; deceased persons; those born in the UK, Ireland or NZ; and Aboriginal and/or Torres Strait Islander peoples. There is overlap across CALD cohorts where individuals may have reported they had more than one CALD characteristic in the 2021 Census.

Small negative changes may appear when compared with the previous report due to perturbation, in particular for small population groups.

Source: Australian Immunisation Register linked to the Multi-Agency Data Integration Project (Census 2021 characteristics). Coverage rates for the general population are as published for 30 November 2022.

Data as at:
08 Dec 2022
Updated weekly

Residential aged care vaccination rollout



170,560

Aged care residents with at least one dose



169,268

Aged care residents with at least two doses



162,994

Aged care residents with at least three doses



133,359

Aged care residents with at least four doses



>99%

Aged care workers with at least two doses nationally

Aged care resident vaccinations

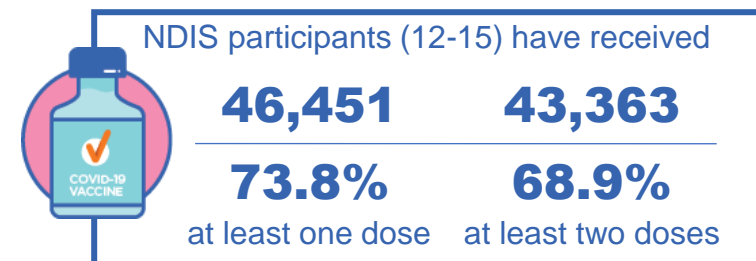
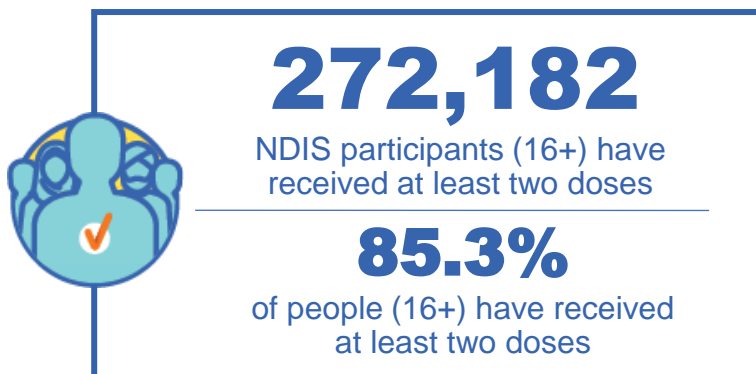
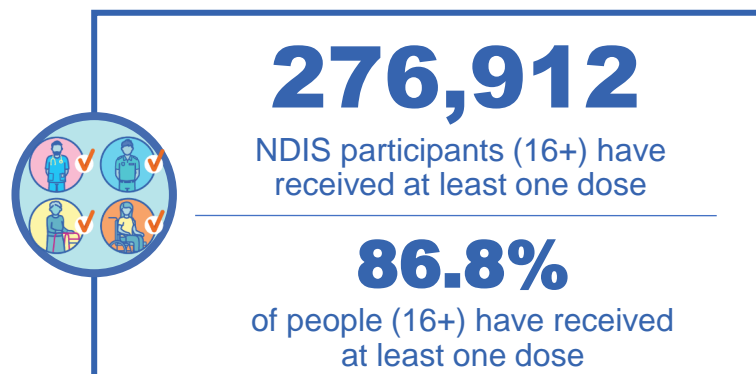
	Aged care residents with at least one dose	Aged care residents with at least two doses	Aged care residents with at least three doses	Aged care residents with at least four doses
NSW	97.0%	96.3%	92.5%	74.1%
VIC	96.9%	96.3%	93.5%	79.9%
QLD	95.1%	94.4%	90.4%	72.7%
SA	96.0%	94.8%	91.1%	74.3%
WA	96.9%	96.1%	92.1%	73.2%
TAS	96.0%	95.1%	92.0%	76.7%
NT	96.9%	95.1%	90.4%	72.7%
ACT	98.0%	97.4%	95.1%	82.8%
National	96.5%	95.7%	92.2%	75.4%

Source: Residential aged care provider self-reported COVID-19 vaccination information and matched AIR data of residents in permanent residential RACFs.

National Disability Insurance Scheme (NDIS) reported vaccinations

Data as at:
04 Dec 2022
Updated weekly

Australia's COVID-19
Vaccine Program



NDIS participant vaccinations

	% People aged 16+ with at least one dose	% People aged 16+ with at least two doses	% People aged 16+ with three doses	% People aged 16+ with four doses
ACT	89.5%	88.3%	83.5%	38.8%
NSW	87.3%	86.0%	75.2%	35.2%
NT	77.8%	75.5%	79.0%	27.2%
QLD	84.7%	83.1%	71.3%	29.4%
SA	84.7%	82.8%	78.3%	31.1%
TAS	87.5%	85.7%	76.3%	31.8%
VIC	88.0%	86.6%	77.3%	32.7%
WA	88.1%	86.5%	81.9%	33.1%
National	86.8%	85.3%	76.1%	32.7%

Source: Linkage between National Disability Insurance Agency data and the Australian Immunisation Register. 'Total' NDIS Participant number last obtained as at 04 December 2022. Australian Immunisation Register data as at 04 December 2022. Includes all participants regardless of residence type.