



Australian Government

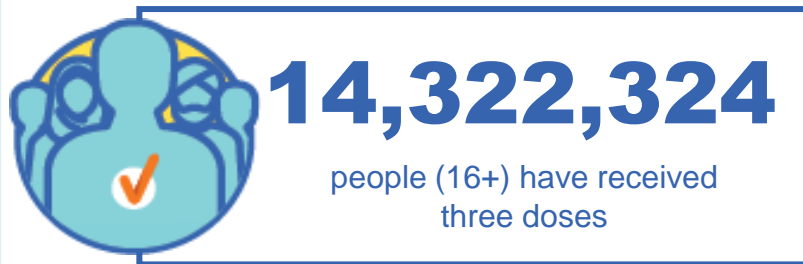
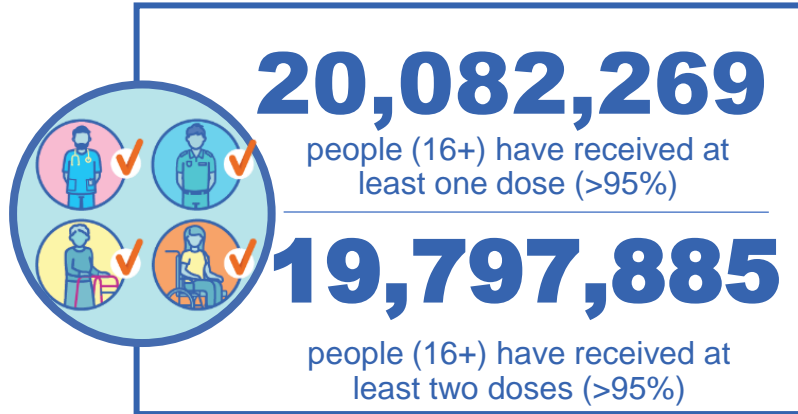
Department of Health and Aged Care

COVID-19 Vaccine Roll-out

22 December 2022

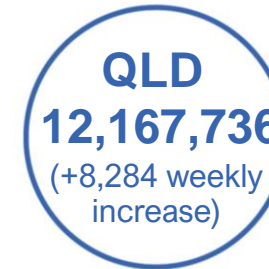
Data as at:
21 Dec 2022
Updated weekly

Total vaccine doses



64,498,048 total vaccine doses administered

+53,796 weekly increase



*Administration state breakdown indicates state in which a vaccine was administered

Source: Australian Immunisation Register

Third Doses

Data as at:
21 Dec 2022
Updated weekly



244,573

Indigenous people who have received three or more doses

56.6%

of eligible population (432,211)



163,140

Aged Care Residents who have received three or more doses

96.4%

of eligible population (169,294)



207,771

NDIS participants

who have received three or more doses#

76.0%

of eligible population (273,000)

23,844

NDIS residents

who have received three or more doses#

90.7%

of eligible population (26,000)



14,322,324 total people who have received three or more doses

+5,354 weekly increase

72.4% of eligible population (19,786,871)

	Number of People	Weekly Increase	% of Eligible
ACT	281,477	124	80.9%
NSW	4,389,265	2,047	70.5%
NT	133,161	<10	79.7%
QLD	2,495,153	1,447	65.4%
SA	1,027,792	255	76.2%
TAS	325,248	37	74.7%
VIC	3,802,477	1,431	74.4%
WA	1,732,557	387	83.5%

135,194

doses administered to persons residing in other territories or with missing residential information


*People may belong to multiple groups and could be represented in the above breakdowns multiple times.
#NDIS participants data as at 18 December 2022.

Source: Australian Immunisation Register

Fourth Doses

Data as at:
21 Dec 2022#
Updated weekly

Australia's COVID-19
Vaccine Program



134,422
Aged Care Residents who have received four or more doses#

84.5%
of eligible population (159,009)



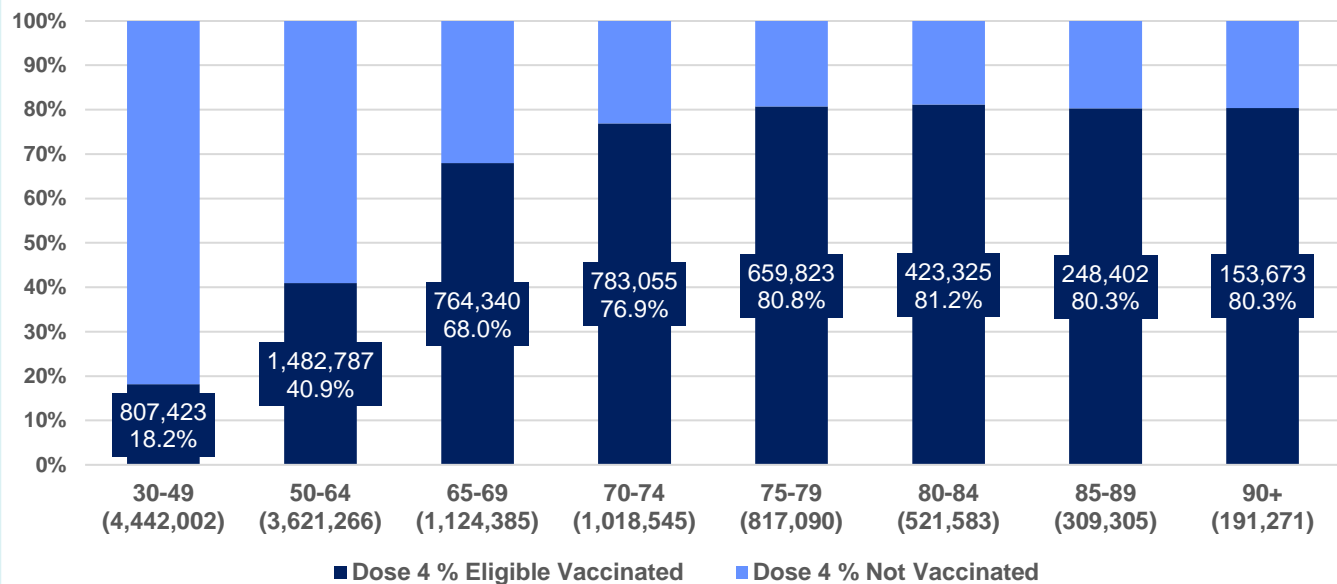
5,369,285
+29,441
44.2%
3,032,618
76.2%

total people (16+) who have received four doses
weekly increase (16+)

of eligible population (30+) (12,045,447)

total people (65+) who have received four doses
of eligible population (65+) (3,982,179)

% Individuals eligible vaccinated by current age



	Number of People 16+	Weekly Increase
ACT	118,017	1,036
NSW	1,712,490	9,725
NT	28,835	293
QLD	1,020,865	4,506
SA	421,492	1,497
TAS	143,632	676
VIC	1,339,039	8,155
WA	552,522	3,542

32,393 doses administered to persons residing in other territories or with missing residential information

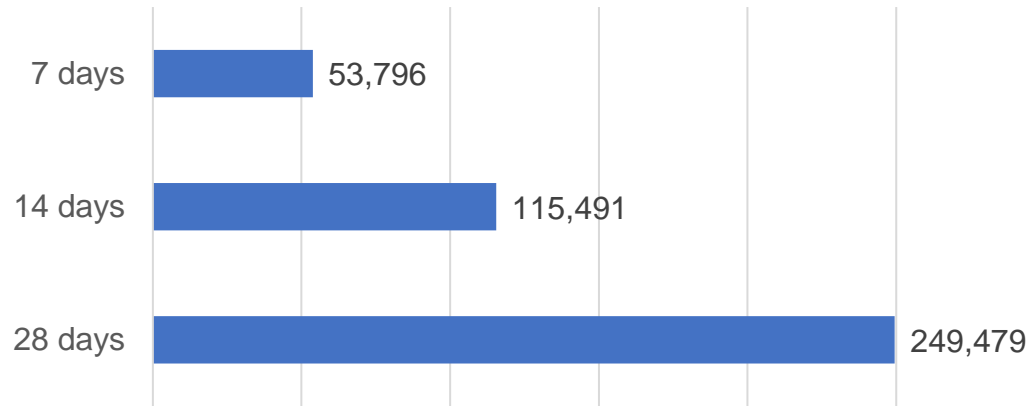
*People become eligible for a fourth dose three months after their third dose. Individuals may belong to multiple groups and could be represented in the above multiple times.
#Aged Care Residents data as at 22 December 2022.

Source: Australian Immunisation Register

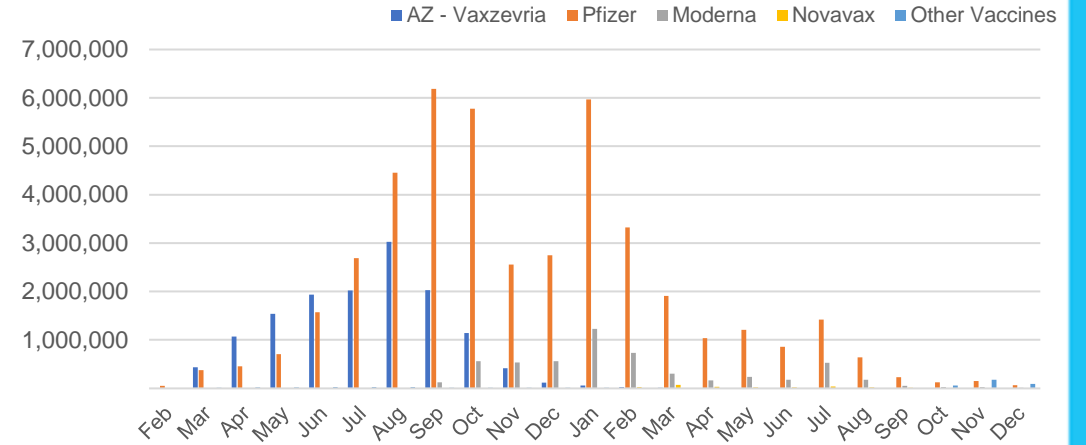
Vaccine milestone charts

Data as at:
21 Dec 2022
Updated weekly

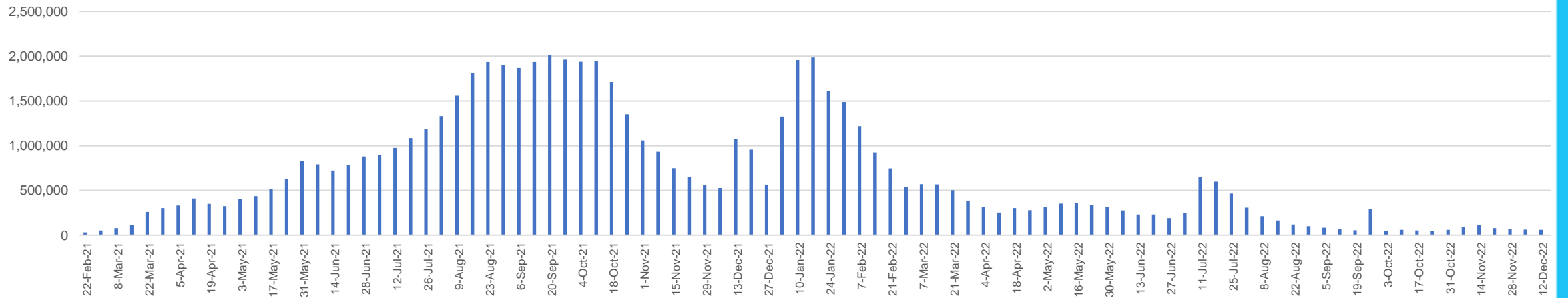
Doses Reported



Doses by administration month and vaccine type



Doses Administered by Week



*Sourced from the Australian Immunisation Register.

Data as at:
21 Dec 2022
Updated weekly

Doses by age and jurisdiction

	AUS	ACT	NSW	NT	QLD	SA	TAS	VIC	WA
5 to 11 - dose 1	1,133,293	30,541	340,019	11,900	194,917	79,023	26,768	308,152	131,820
5 to 11 - dose 2	902,451	27,169	279,653	8,537	149,859	63,505	22,351	244,725	101,336
5 to 11 - population	2,269,663	40,719	711,525	25,120	476,567	149,048	45,549	568,488	252,235
5 to 11 % with dose 1	49.93%	75.00%	47.79%	47.37%	40.90%	53.02%	58.77%	54.21%	52.26%
5 to 11 % with dose 2	39.76%	66.72%	39.30%	33.98%	31.45%	42.61%	49.07%	43.05%	40.18%
12 to 15 - dose 1	1,019,907	20,020	312,923	10,215	198,240	66,633	22,155	266,129	112,759
12 to 15 - dose 2	956,148	19,415	297,050	9,154	183,302	62,397	20,863	251,826	103,327
12 to 15 - population	1,279,387	20,888	399,352	13,190	278,225	85,541	27,469	313,711	140,783
12 to 15 % with dose 1	79.72%	95.84%	78.36%	77.45%	71.25%	77.90%	80.65%	84.83%	80.09%
12 to 15 % with dose 2	74.73%	92.95%	74.38%	69.40%	65.88%	72.94%	75.95%	80.27%	73.39%
16 and over - dose 1	20,082,269	353,307	6,315,106	171,042	3,874,523	1,375,388	443,198	5,171,221	2,102,355
16 and over - dose 2	19,797,885	348,317	6,231,923	167,199	3,817,997	1,350,099	435,596	5,109,769	2,076,282
16 and over - dose 3	14,322,324	281,477	4,389,265	133,161	2,495,153	1,027,792	325,248	3,802,477	1,732,557
16 and over - population	20,629,070	364,811	6,504,442	193,211	4,161,009	1,471,062	465,436	5,279,175	2,185,967
16 and over % with dose 1	97.35%	96.85%	97.09%	88.53%	93.11%	93.50%	95.22%	97.96%	96.18%
16 and over % with dose 2	95.97%	95.48%	95.81%	86.54%	91.76%	91.78%	93.59%	96.79%	94.98%
16 and over % with dose 3	69.43%	77.16%	67.48%	68.92%	59.97%	69.87%	69.88%	72.03%	79.26%
30 and over - dose 1	15,700,907	273,485	4,963,455	126,719	3,026,590	1,093,067	352,039	4,035,408	1,646,401
30 and over - dose 2	15,513,531	270,099	4,906,945	124,552	2,991,056	1,077,664	347,295	3,992,942	1,629,556
30 and over - dose 3	12,115,811	230,808	3,744,522	104,812	2,169,673	878,615	281,203	3,176,186	1,428,800
30 and over - dose 4	5,322,828	116,517	1,696,300	28,254	1,013,756	419,110	142,626	1,325,786	548,680
30 and over - population	16,012,407	268,806	5,065,001	140,954	3,219,394	1,157,853	368,927	4,079,079	1,709,089
30 and over % with dose 1	98.05%	>99%	98.00%	89.90%	94.01%	94.40%	95.42%	98.93%	96.33%
30 and over % with dose 2	96.88%	>99%	96.88%	88.36%	92.91%	93.07%	94.14%	97.89%	95.35%
30 and over % with dose 3	75.67%	85.86%	73.93%	74.36%	67.39%	75.88%	76.22%	77.87%	83.60%
30 and over % with dose 4	33.24%	43.35%	33.49%	20.04%	31.49%	36.20%	38.66%	32.50%	32.10%
65 and over - dose 1	4,373,970	64,303	1,414,265	20,366	849,757	348,921	114,402	1,091,619	429,763
65 and over - dose 2	4,336,897	63,557	1,402,383	20,112	843,706	346,320	113,721	1,081,871	426,876
65 and over - dose 3	3,990,960	60,299	1,278,423	18,326	775,793	324,971	107,385	988,001	405,501
65 and over - dose 4	3,032,618	50,730	965,364	11,841	602,443	256,034	86,319	732,569	306,625
65 and over - population	4,313,779	60,463	1,393,416	21,593	864,448	352,458	116,037	1,072,562	431,884
65 and over % with dose 1	>99%	>99%	>99%	94.32%	98.30%	99.00%	98.59%	>99%	>99%
65 and over % with dose 2	>99%	>99%	>99%	93.14%	97.60%	98.26%	98.00%	>99%	98.84%
65 and over % with dose 3	92.52%	>99%	91.75%	84.87%	89.74%	92.20%	92.54%	92.12%	93.89%
65 and over % with dose 4	70.30%	83.90%	69.28%	54.84%	69.69%	72.64%	74.39%	68.30%	71.00%

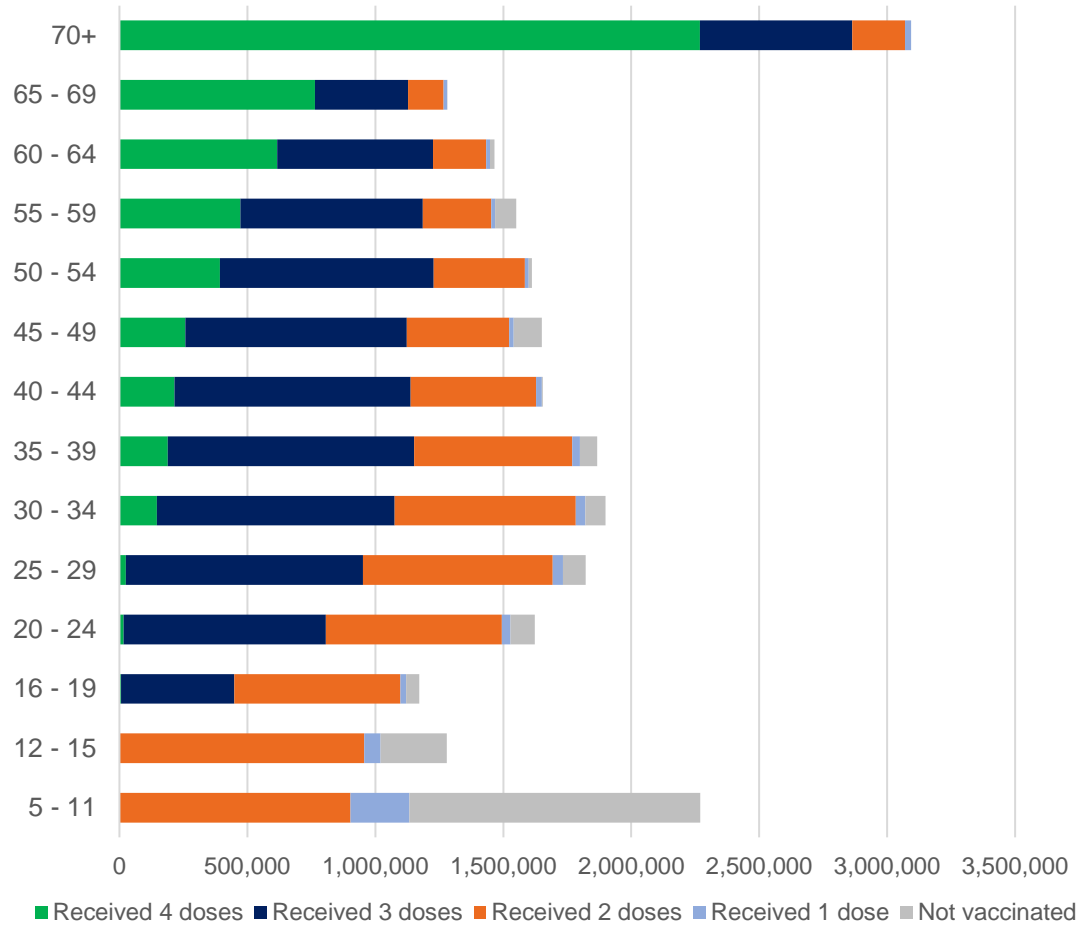
*National population will not equal sum of listed jurisdictions due to a small number of people counted in national population residing in some 'other' territories. Sum of state doses will not add to national total as some records are unable to be geocoded to a State or Territory.

Doses sourced from Australian Immunisation Register, population from ABS ERP June 2021

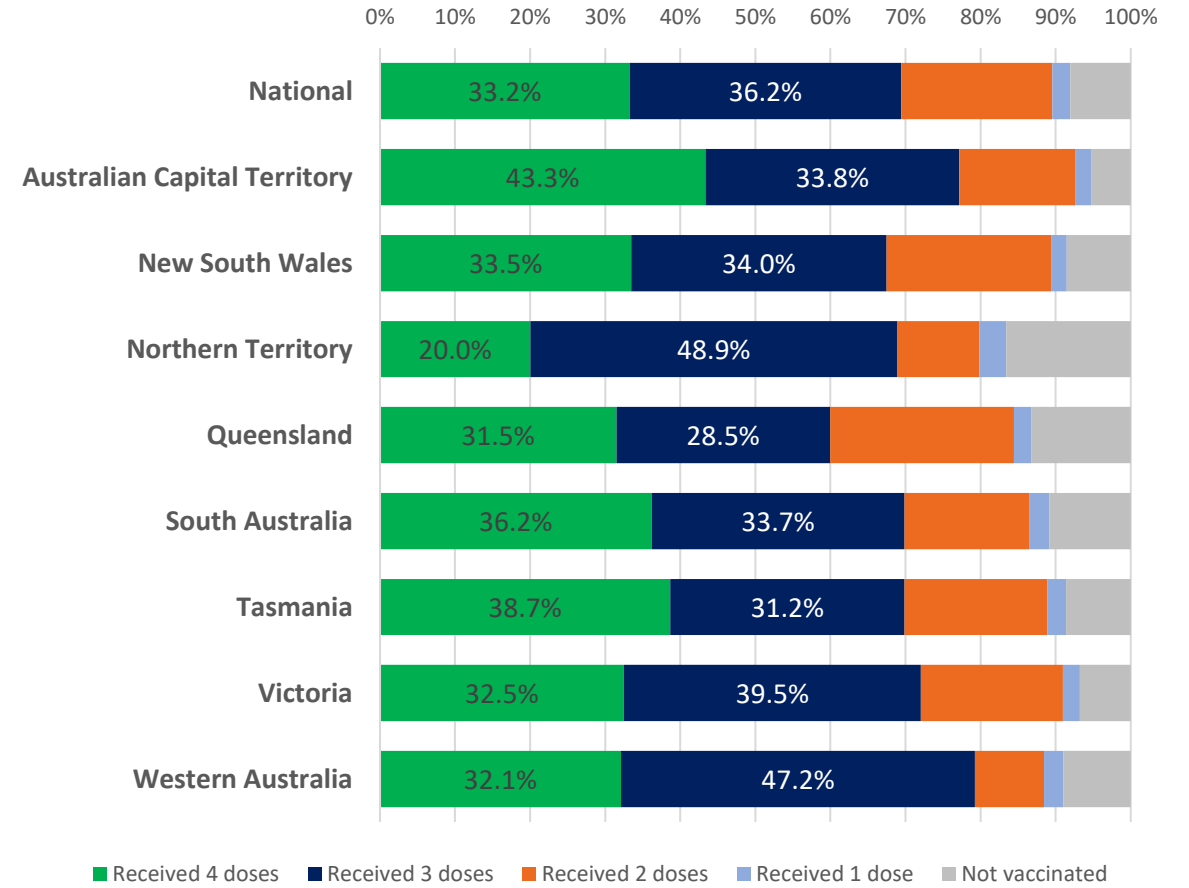
Data as at:
21 Dec 2022
Updated weekly

Vaccinations by age and location

Number of people vaccinated by age

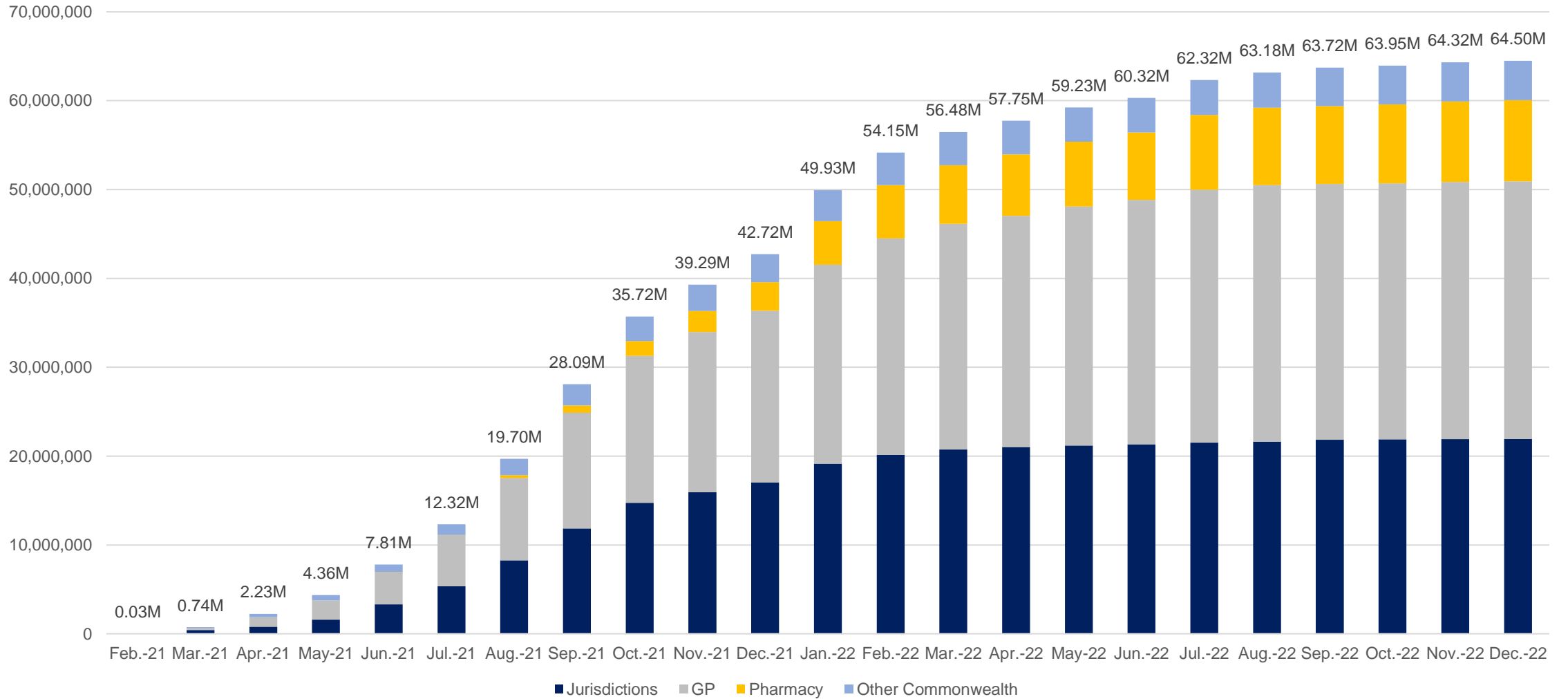


Individuals vaccinated by residential location



Data as at:
21 Dec 2022
Updated weekly

Cumulative doses administered by channel



Source: Australian Immunisation Register

Data as at:
21 Dec 2022
Updated weekly

Commonwealth primary care



Primary care vaccine administration sites

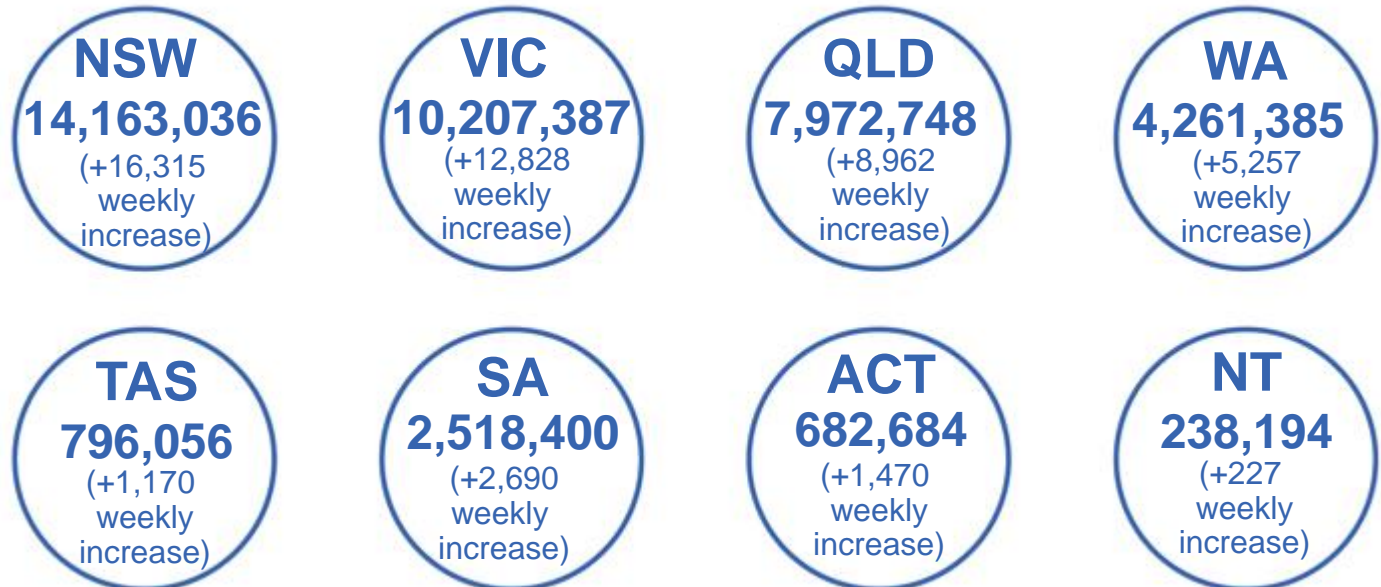
4,887	66	174[#]	3,301
GPs	CVCs	ACCHS	Pharmacies



41,220,654 total vaccine doses administered
in primary care settings
+48,000 weekly increase

Primary care vaccinations by provider type

	Doses administered	Weekly increase
General Practice*	32,000,124	23,446
Pharmacy	9,220,530	24,554



380,764

doses administered to persons residing in other territories or with missing residential information

*General practice includes Commonwealth Vaccination Clinics, Aboriginal Community Health Centres, Royal Flying Doctor Service and other Commonwealth vaccination facilities

[#] Primary care site numbers are reported as at 19 December 2022 and are based on the number of sites participating in the rollout.

Source: Australian Immunisation Register

Aboriginal and Torres Strait Islander peoples

Number of people vaccinated

Data as at:
21 Dec 2022
Updated weekly

Australia's COVID-19
Vaccine Program



People (16+) with at least one dose

450,332 **85.6%**

People (16+) with at least two doses

433,221 **82.3%**



Eligible people (16+) with three doses

244,573 **56.6%**

Eligible people (30+) with four doses

64,906 **35.1%**



People (12-15) with at least one dose

45,826 **65.0%**

People (12-15) with at least two doses

39,601 **56.2%**

135 Aboriginal community controlled health services (ACCHS) sites

0#	31	21	42	14	2	9	16
ACT	NSW	NT	QLD	SA	TAS	VIC	WA

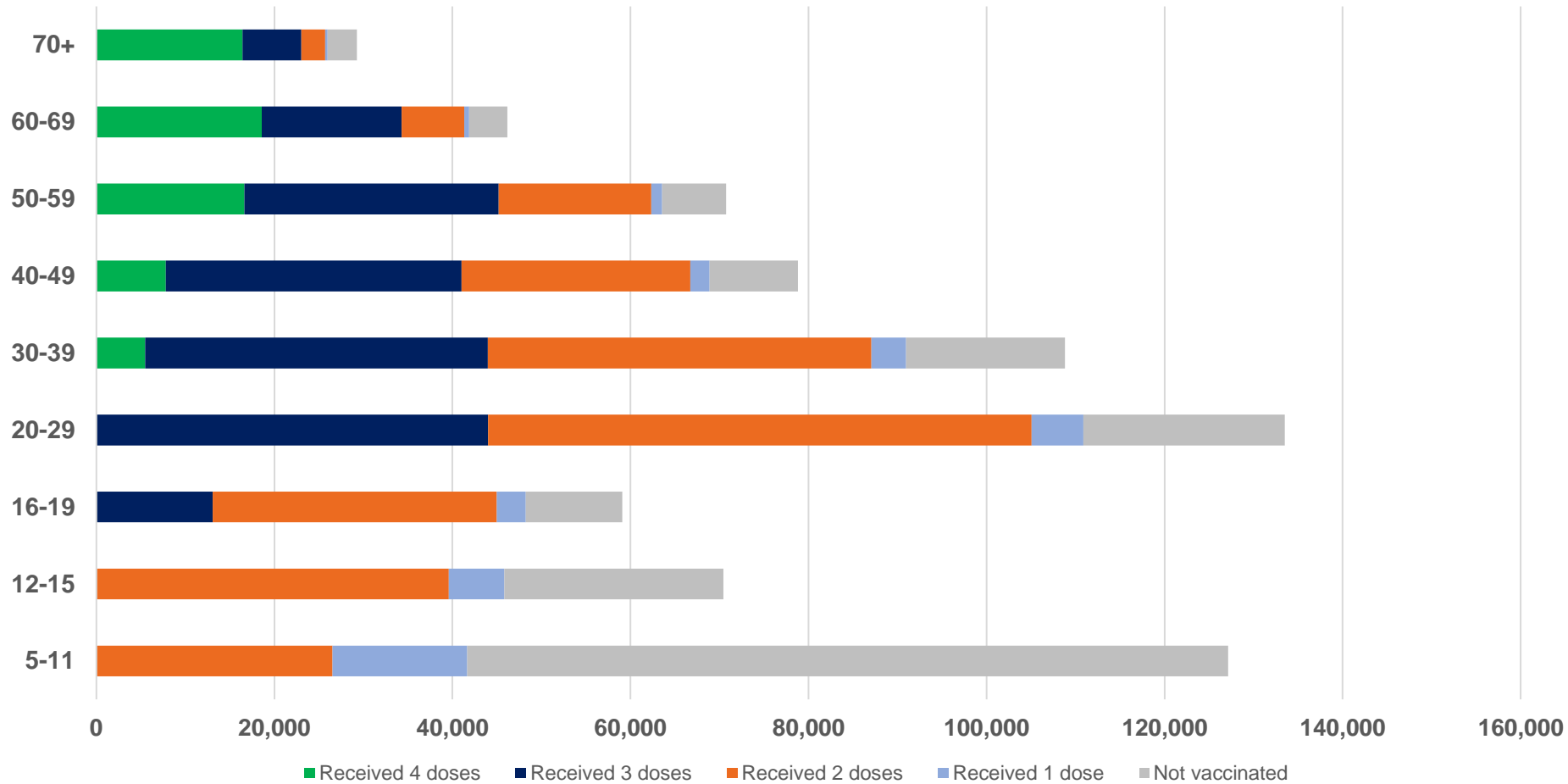
Residential State	Individuals Dose 1 % (16+)	Individuals Dose 2 % (16+)	Individuals Dose 3 % Eligible (aged 16+)	Individuals Dose 4 % Eligible (aged 30+)
ACT	92.2%	90.0%	65.7%	42.7%
NSW	87.9%	86.1%	53.2%	38.0%
NT	90.2%	86.3%	70.5%	26.4%
QLD	82.4%	78.9%	49.2%	37.7%
SA	81.4%	76.3%	61.2%	38.5%
TAS	89.3%	86.9%	60.2%	41.9%
VIC	90.9%	89.0%	62.5%	36.4%
WA	87.6%	82.3%	66.6%	30.1%
Unknown/Other Territories	73.2%	68.1%	51.4%	24.5%
National Coverage %	85.6%	82.3%	56.6%	35.1%
Number with a Dose	450,332	433,221	244,573	64,906
Total / Eligible Population	526,394	526,394	432,211	184,978

Identifying as Aboriginal and Torres Strait Islander is optional and the estimated population may be under reported. Numbers include all Aboriginal and Torres Strait Islander peoples who have received a vaccination, and are not limited to those administered in an ACCHS setting. The total population refers to the number of individuals that identify as Aboriginal and Torres Strait Islander in the Australian Immunisation Register, while the eligible population refers to the number of these individuals who meet the criteria for a further dose (based on completion of previous doses, age, and time period elapsed since last dose). Please note there may be people under 30 who are eligible, but these are not included in coverage rates or population to protect privacy.
#ACCHS in the ACT are currently operating as Commonwealth Vaccine Clinics so not included to avoid double counting.

Aboriginal and Torres Strait Islander peoples

Number of people vaccinated by age

Data as at:
21 Dec 2022
Updated weekly



Source: Australian Immunisation Register

Individuals with Culturally and Linguistically Diverse (CALD) backgrounds data

Data as at:
11 December 2022
Updated weekly

Australia's COVID-19
Vaccine Program

People over the age of 16

CALD population *	Total number of individuals in cohort	% People with at least one dose	% People who received two doses	% of eligible people who received three or more doses
General population	20,629,070	>95.0%	>95.0%	72.4%
People born overseas	4,296,355	94.7%	94.2%	73.6%
Speaks a language other than English at home	3,980,422	94.2%	93.6%	69.5%

	General population			Born Overseas			Speaks a language other than English at home		
	% with at least one dose	% who received two doses	% of eligible people who received three or more doses	% with at least one dose	% who received two doses	% of eligible people who received three or more doses	% with at least one dose	% who received two doses	% of eligible people who received three or more doses
ACT	>95.0%	>95.0%	80.8%	>95.0%	>95.0%	79.3%	>95.0%	>95.0%	76.7%
NSW	>95.0%	>95.0%	70.4%	>95.0%	94.5%	71.1%	94.2%	93.6%	66.4%
NT	88.5%	86.6%	79.7%	>95.0%	>95.0%	88.4%	94.5%	94.0%	87.1%
Qld	93.1%	91.7%	65.4%	92.3%	91.7%	68.2%	92.6%	91.9%	64.8%
SA	93.5%	91.8%	76.2%	93.0%	92.1%	75.8%	91.9%	90.9%	72.1%
Tas	>95.0%	93.6%	74.7%	93.9%	93.4%	76.7%	94.0%	93.4%	72.8%
Vic	>95.0%	>95.0%	74.4%	>95.0%	94.9%	73.7%	94.8%	94.3%	69.8%
WA	>95.0%	>95.0%	83.5%	>95.0%	94.7%	85.7%	>95.0%	94.8%	83.8%

*Individuals with Culturally and Linguistically Diverse (CALD) backgrounds are as reported in the 2021 Census, excluding those who have since departed Australia; deceased persons; those born in the UK, Ireland or NZ; and Aboriginal and/or Torres Strait Islander peoples. There is overlap across CALD cohorts where individuals may have reported they had more than one CALD characteristic in the 2021 Census.

Small negative changes may appear when compared with the previous report due to perturbation, in particular for small population groups.

Source: Australian Immunisation Register linked to the Multi-Agency Data Integration Project (Census 2021 characteristics). Coverage rates for the general population are as published for 14 December 2022.

Data as at:
21 Dec 2022
Updated weekly

Residential aged care vaccination rollout



170,572
Aged care residents with at least one dose



169,294
Aged care residents with at least two doses



163,140
Aged care residents with at least three doses



134,296
Aged care residents with at least four doses



>99%
Aged care workers with at least two doses nationally

Aged care resident vaccinations

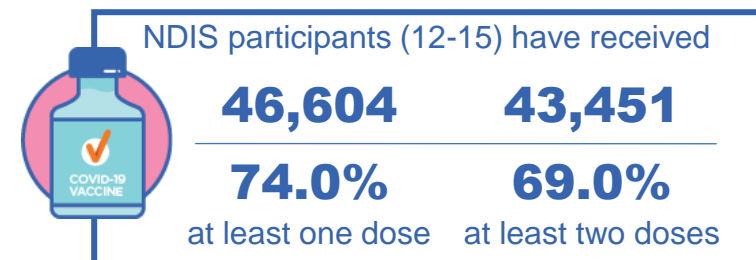
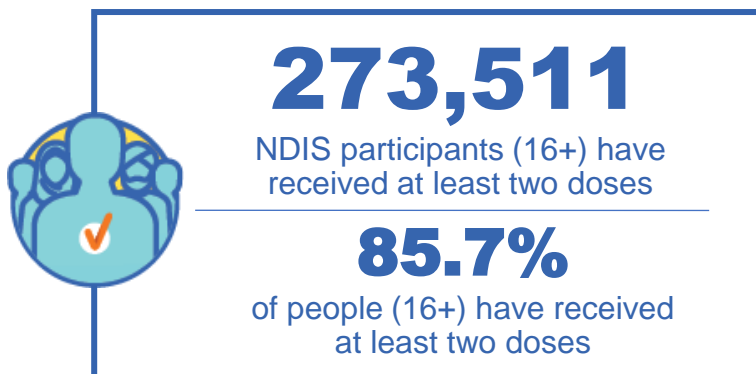
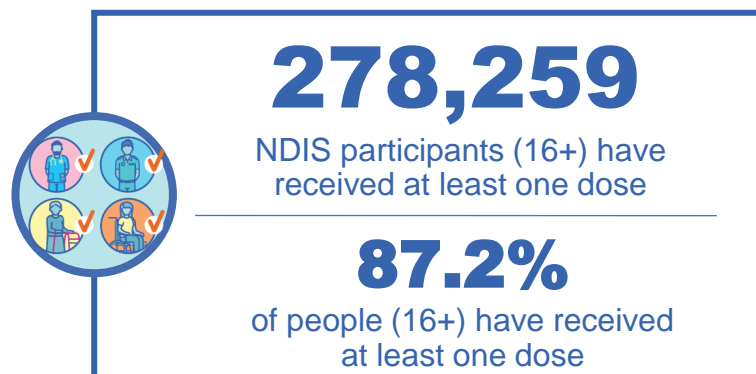
	Aged care residents with at least one dose	Aged care residents with at least two doses	Aged care residents with at least three doses	Aged care residents with at least four doses
NSW	97.0%	96.3%	92.6%	74.7%
VIC	96.9%	96.3%	93.5%	80.4%
QLD	95.1%	94.4%	90.5%	73.2%
SA	96.0%	94.8%	91.2%	74.6%
WA	96.9%	96.1%	92.3%	74.3%
TAS	96.0%	95.1%	92.0%	77.0%
NT	96.9%	95.1%	90.4%	72.7%
ACT	98.0%	97.4%	95.1%	83.0%
National	96.5%	95.7%	92.3%	76.0%

Source: Residential aged care provider self-reported COVID-19 vaccination information and matched AIR data of residents in permanent residential RACFs.

National Disability Insurance Scheme (NDIS) reported vaccinations

Data as at:
18 Dec 2022
Updated weekly

Australia's COVID-19
Vaccine Program



NDIS participant vaccinations

	% People aged 16+ with at least one dose	% People aged 16+ with at least two doses	% People aged 16+ with three doses	% People aged 16+ with four doses
ACT	89.5%	88.4%	83.6%	39.3%
NSW	87.7%	86.4%	75.1%	35.5%
NT	78.2%	75.9%	78.6%	27.6%
QLD	85.2%	83.6%	71.2%	29.8%
SA	85.1%	83.2%	78.1%	31.4%
TAS	87.8%	85.9%	76.3%	32.2%
VIC	88.4%	87.1%	77.3%	33.2%
WA	88.6%	86.9%	81.9%	33.6%
National	87.2%	85.7%	76.0%	33.1%

Source: Linkage between National Disability Insurance Agency data and the Australian Immunisation Register. 'Total' NDIS Participant number last obtained as at 04 December 2022. Australian Immunisation Register data as at 18 December 2022. Includes all participants regardless of residence type.