



**Australian Government**  

---

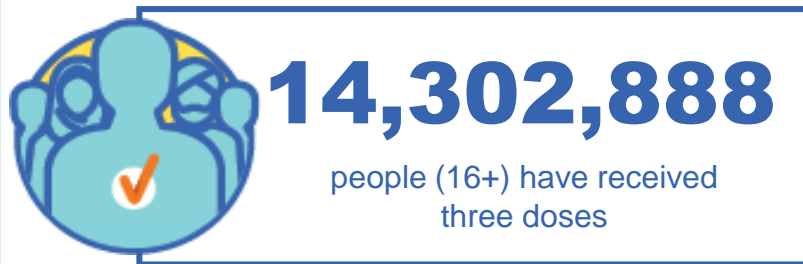
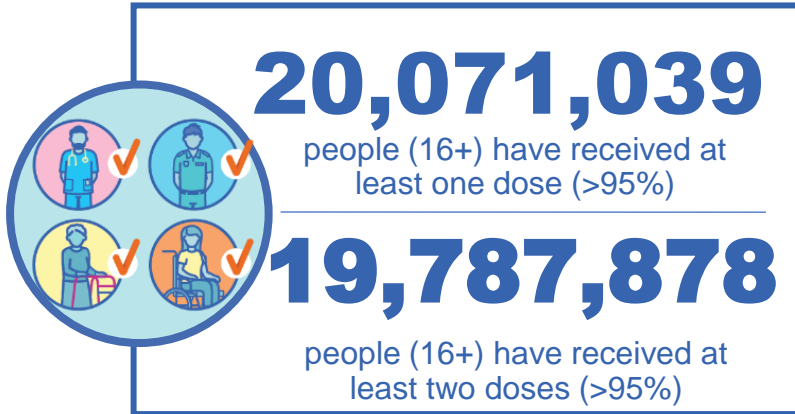
**Department of Health and Aged Care**

# COVID-19 Vaccine Roll-out

01 December 2022

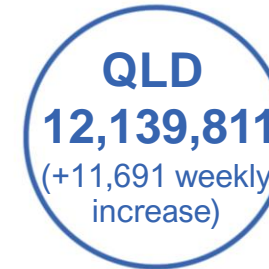
Data as at:  
30 Nov 2022  
Updated weekly

## Total vaccine doses



**64,319,755** total vaccine doses administered

**+71,186** weekly increase

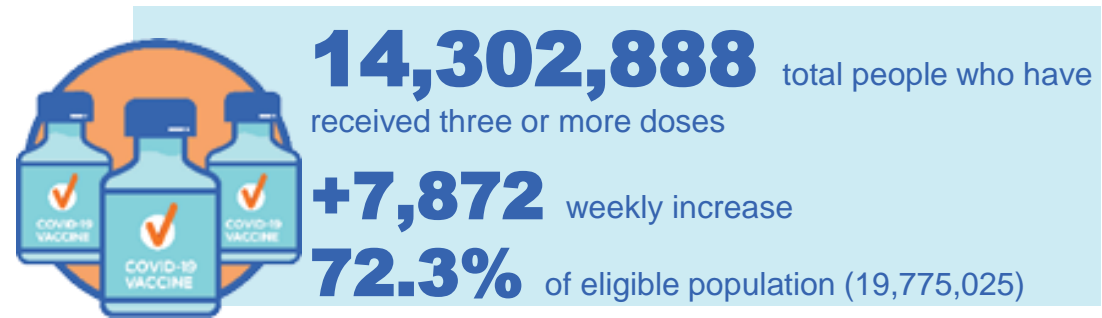
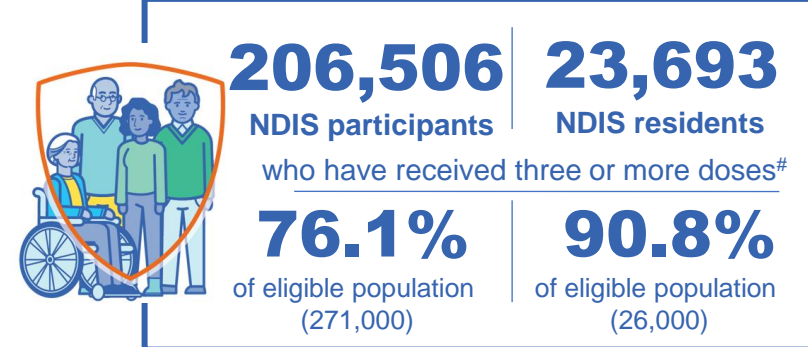
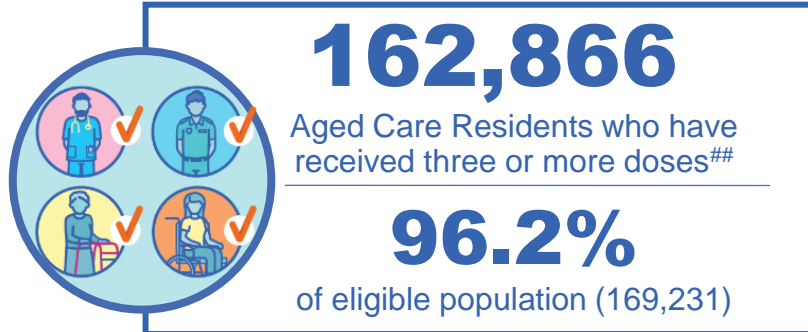
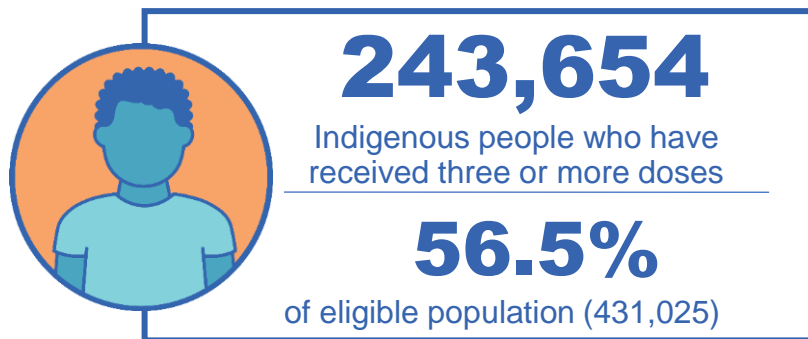


\*Administration state breakdown indicates state in which a vaccine was administered

Source: Australian Immunisation Register

# Third Doses

Data as at:  
30 Nov 2022##  
Updated weekly



	Number of People	Weekly Increase	% of Eligible
ACT	281,155	120	80.8%
NSW	4,382,156	2,489	70.4%
NT	133,174	<10	79.7%
QLD	2,490,261	2,027	65.3%
SA	1,026,547	479	76.2%
TAS	324,911	114	74.7%
VIC	3,797,918	1,886	74.4%
WA	1,731,069	646	83.5%

**135,697** doses administered to persons residing in other territories or with missing residential information


\*People may belong to multiple groups and could be represented in the above breakdowns multiple times.  
#NDIS participants data as at 27 November 2022. ##Aged Care Residents data as at 01 December 2022.

Source: Australian Immunisation Register

# Fourth Doses

Data as at:  
30 Nov 2022#  
Updated weekly

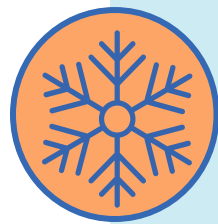
Australia's COVID-19  
Vaccine Program



**132,670**  
Aged Care Residents who have received four or more doses#

---

**83.4%**  
of eligible population (158,985)



**5,264,262**  
**+44,581**  
**43.5%**  
**3,007,294**  
**75.7%**

total people (16+) who have received four doses  
weekly increase (16+)

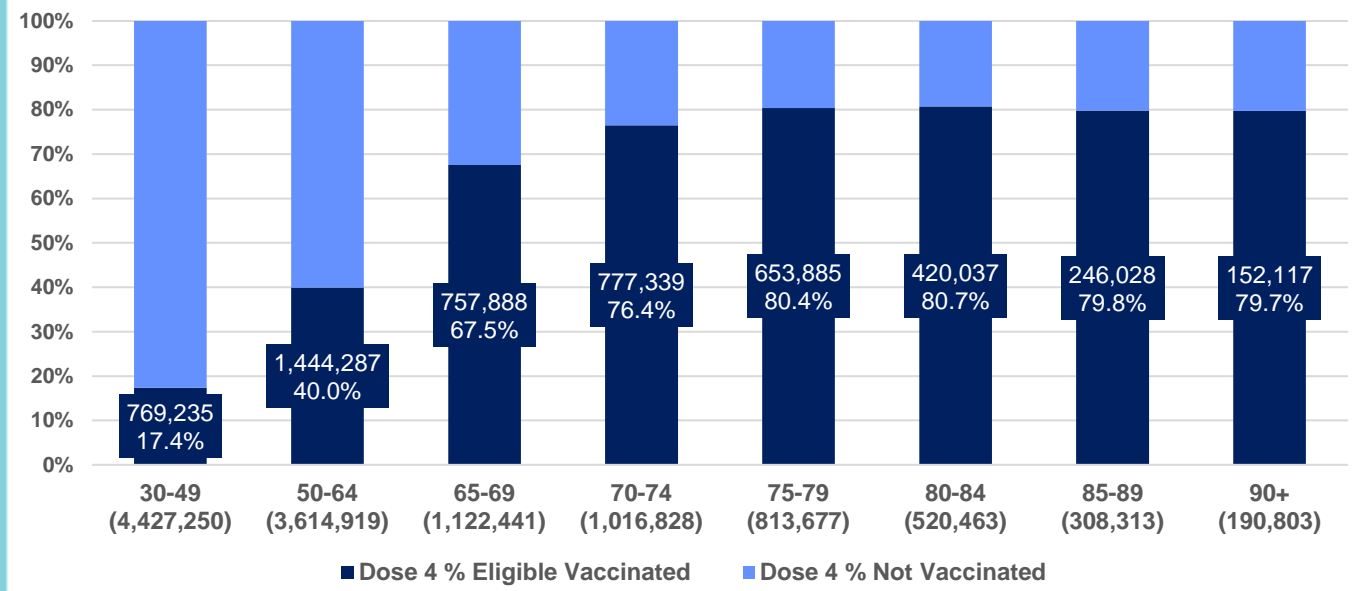
---

of eligible population (30+) (12,014,694)

---

total people (65+) who have received four doses  
of eligible population (65+) (3,972,525)

% Individuals eligible vaccinated by current age



	Number of People 16+	Weekly Increase
ACT	114,668	1,230
NSW	1,679,235	13,752
NT	27,741	267
QLD	1,004,960	7,027
SA	415,284	3,025
TAS	140,897	1,251
VIC	1,309,882	12,709
WA	539,578	5,022

**32,017** doses administered to persons residing in other territories or with missing residential information

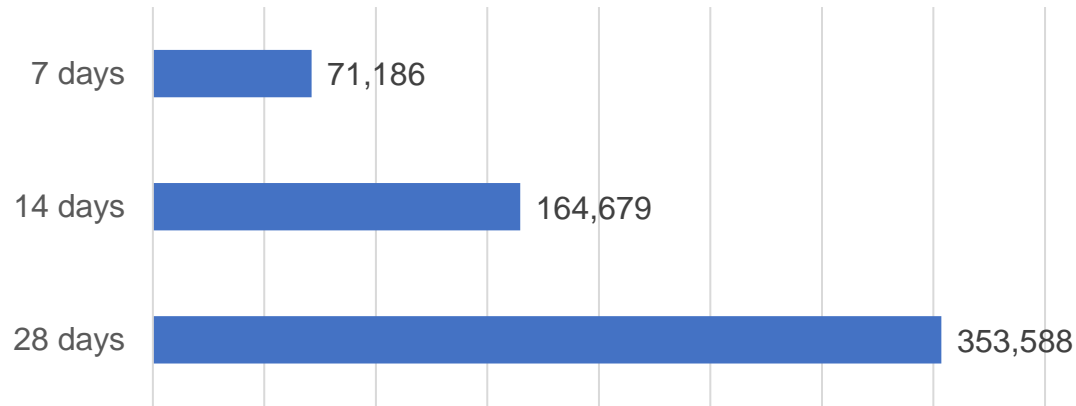
\*People become eligible for a fourth dose three months after their third dose. Individuals may belong to multiple groups and could be represented in the above multiple times.  
#Aged Care Residents data as at 01 December 2022.

Source: Australian Immunisation Register

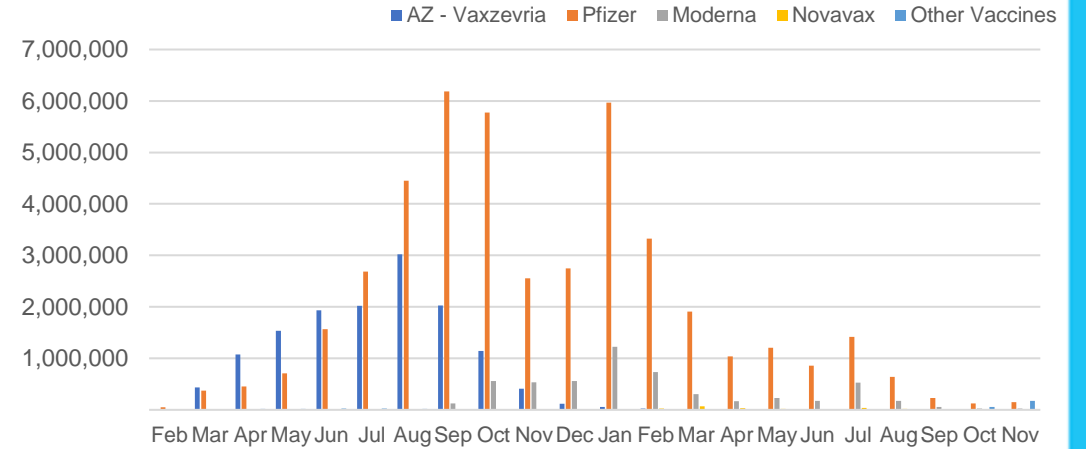
# Vaccine milestone charts

Data as at:  
30 Nov 2022  
Updated weekly

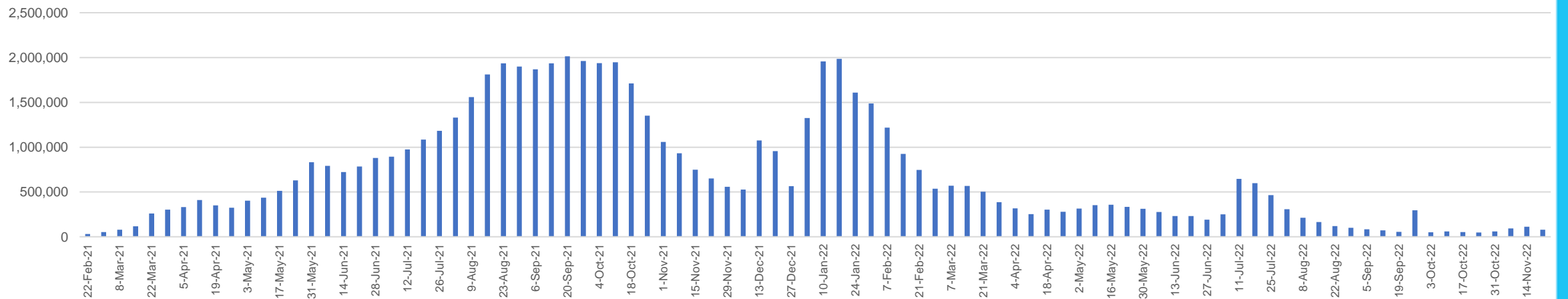
Doses Reported



Doses by administration month and vaccine type



Doses Administered by Week



\*Sourced from the Australian Immunisation Register.

Data as at:  
30 Nov 2022  
Updated weekly

## Doses by age and jurisdiction

	AUS	ACT	NSW	NT	QLD	SA	TAS	VIC	WA
5 to 11 - dose 1	1,142,231	30,729	342,581	11,996	196,509	79,694	26,970	310,480	132,930
5 to 11 - dose 2	907,550	27,319	281,062	8,614	150,683	63,968	22,512	246,107	101,949
5 to 11 - population	2,269,663	40,719	711,525	25,120	476,567	149,048	45,549	568,488	252,235
5 to 11 % with dose 1	50.33%	75.47%	48.15%	47.75%	41.23%	53.47%	59.21%	54.62%	52.70%
5 to 11 % with dose 2	39.99%	67.09%	39.50%	34.29%	31.62%	42.92%	49.42%	43.29%	40.42%
12 to 15 - dose 1	1,023,713	20,003	314,127	10,269	199,114	66,787	22,264	267,119	113,008
12 to 15 - dose 2	960,807	19,414	298,401	9,218	184,317	62,621	20,991	253,147	103,714
12 to 15 - population	1,279,387	20,888	399,352	13,190	278,225	85,541	27,469	313,711	140,783
12 to 15 % with dose 1	80.02%	95.76%	78.66%	77.85%	71.57%	78.08%	81.05%	85.15%	80.27%
12 to 15 % with dose 2	75.10%	92.94%	74.72%	69.89%	66.25%	73.21%	76.42%	80.69%	73.67%
16 and over - dose 1	20,071,039	353,142	6,311,820	171,125	3,871,089	1,374,468	443,076	5,167,934	2,100,481
16 and over - dose 2	19,787,878	348,218	6,229,235	167,275	3,814,659	1,349,242	435,442	5,107,105	2,074,447
16 and over - dose 3	14,302,888	281,155	4,382,156	133,174	2,490,261	1,026,547	324,911	3,797,918	1,731,069
16 and over - population	20,629,070	364,811	6,504,442	193,211	4,161,009	1,471,062	465,436	5,279,175	2,185,967
16 and over % with dose 1	97.29%	96.80%	97.04%	88.57%	93.03%	93.43%	95.20%	97.89%	96.09%
16 and over % with dose 2	95.92%	95.45%	95.77%	86.58%	91.68%	91.72%	93.56%	96.74%	94.90%
16 and over % with dose 3	69.33%	77.07%	67.37%	68.93%	59.85%	69.78%	69.81%	71.94%	79.19%
30 and over - dose 1	15,687,292	273,206	4,959,565	126,754	3,023,388	1,092,123	351,802	4,031,478	1,644,678
30 and over - dose 2	15,501,179	269,883	4,903,676	124,586	2,987,943	1,076,780	347,045	3,989,572	1,627,870
30 and over - dose 3	12,097,898	230,472	3,738,714	104,750	2,165,990	877,424	280,811	3,171,465	1,426,912
30 and over - dose 4	5,220,816	113,267	1,664,036	27,194	998,248	413,031	139,960	1,297,604	536,010
30 and over - population	16,012,407	268,806	5,065,001	140,954	3,219,394	1,157,853	368,927	4,079,079	1,709,089
30 and over % with dose 1	97.97%	>99%	97.92%	89.93%	93.91%	94.32%	95.36%	98.83%	96.23%
30 and over % with dose 2	96.81%	>99%	96.81%	88.39%	92.81%	93.00%	94.07%	97.81%	95.25%
30 and over % with dose 3	75.55%	85.74%	73.81%	74.32%	67.28%	75.78%	76.12%	77.75%	83.49%
30 and over % with dose 4	32.60%	42.14%	32.85%	19.29%	31.01%	35.67%	37.94%	31.81%	31.36%
65 and over - dose 1	4,365,766	64,154	1,411,507	20,338	847,826	348,210	114,239	1,089,350	428,877
65 and over - dose 2	4,329,167	63,420	1,399,826	20,087	841,839	345,636	113,561	1,079,811	426,003
65 and over - dose 3	3,982,747	60,147	1,275,671	18,293	774,005	324,255	107,198	985,848	404,553
65 and over - dose 4	3,007,294	50,310	957,025	11,687	598,207	254,187	85,574	725,849	303,681
65 and over - population	4,313,779	60,463	1,393,416	21,593	864,448	352,458	116,037	1,072,562	431,884
65 and over % with dose 1	>99%	>99%	>99%	94.19%	98.08%	98.79%	98.45%	>99%	>99%
65 and over % with dose 2	>99%	>99%	>99%	93.03%	97.38%	98.06%	97.87%	>99%	98.64%
65 and over % with dose 3	92.33%	>99%	91.55%	84.72%	89.54%	92.00%	92.38%	91.92%	93.67%
65 and over % with dose 4	69.71%	83.21%	68.68%	54.12%	69.20%	72.12%	73.75%	67.67%	70.32%

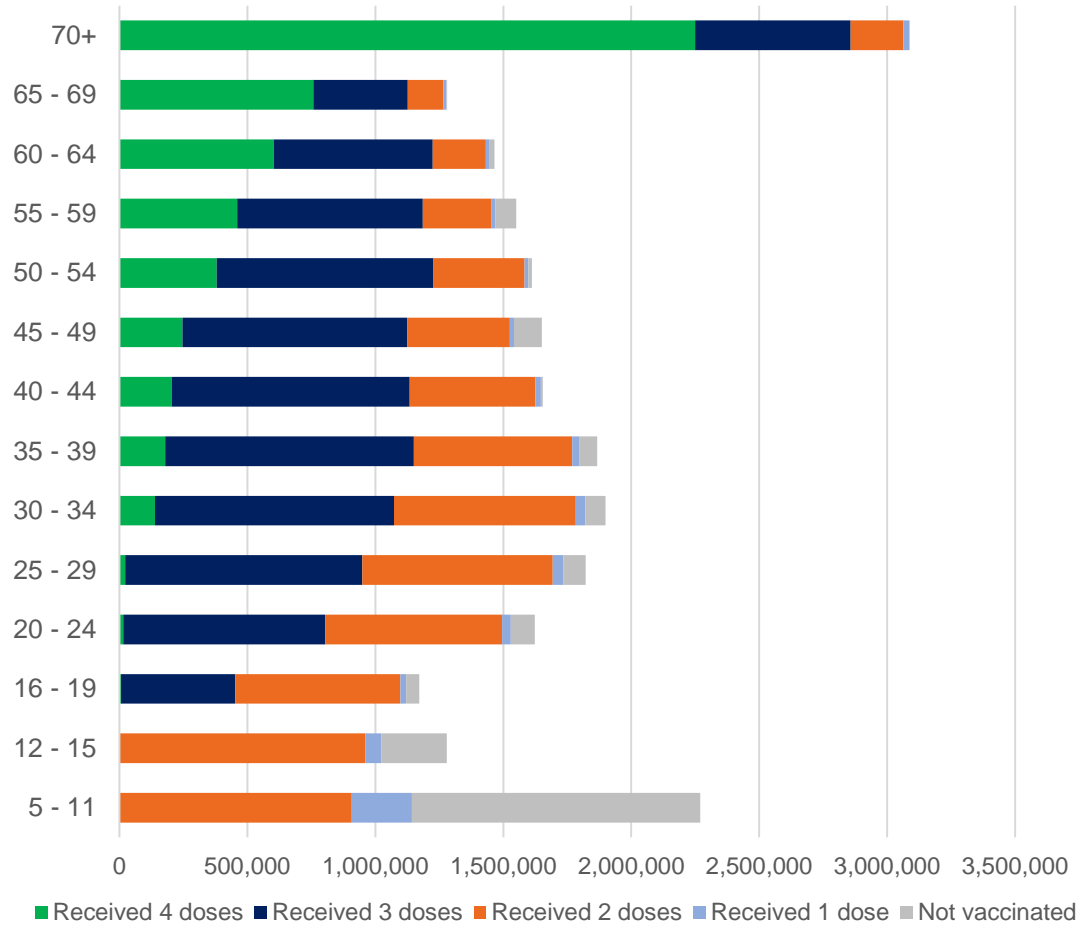
\*National population will not equal sum of listed jurisdictions due to a small number of people counted in national population residing in some 'other' territories. Sum of state doses will not add to national total as some records are unable to be geocoded to a State or Territory.

Doses sourced from Australian Immunisation Register, population from ABS ERP June 2021

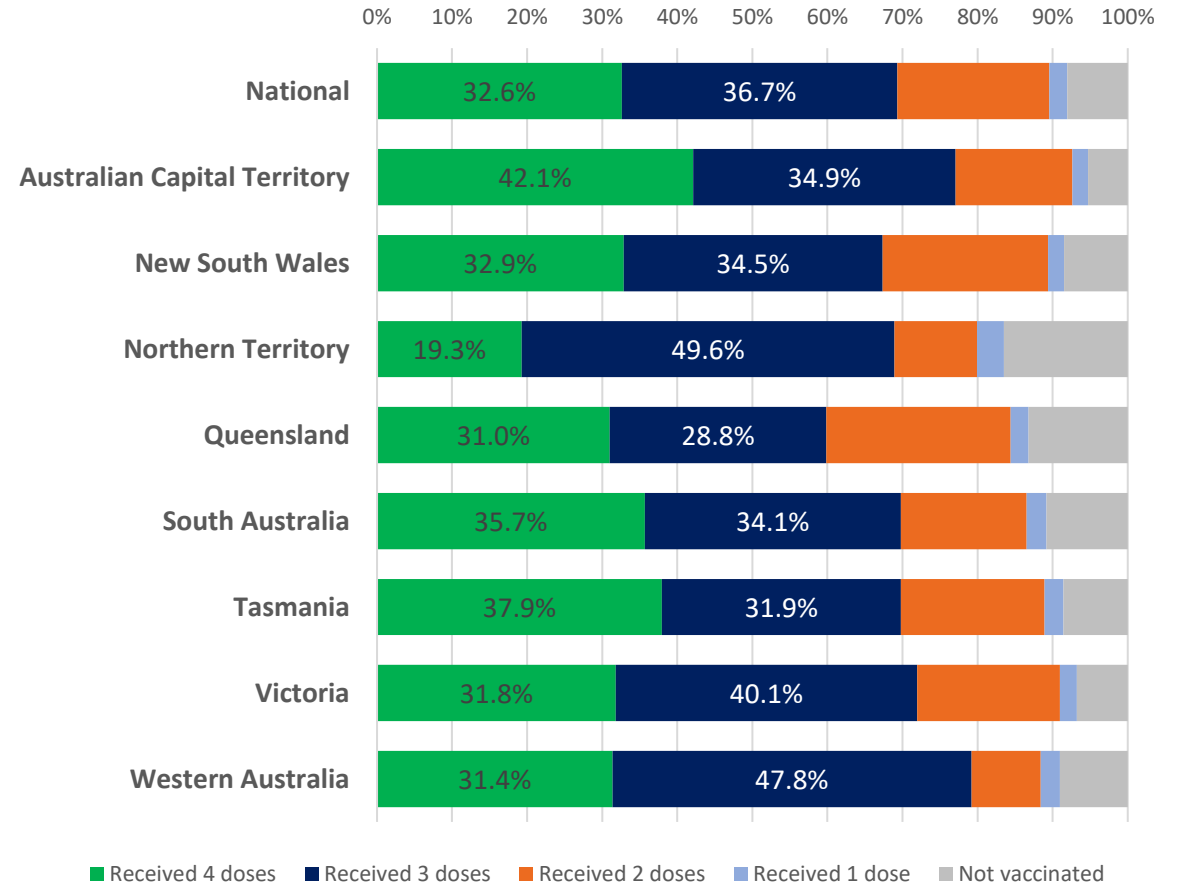
# Vaccinations by age and location

Data as at:  
30 Nov 2022  
Updated weekly

Number of people vaccinated by age

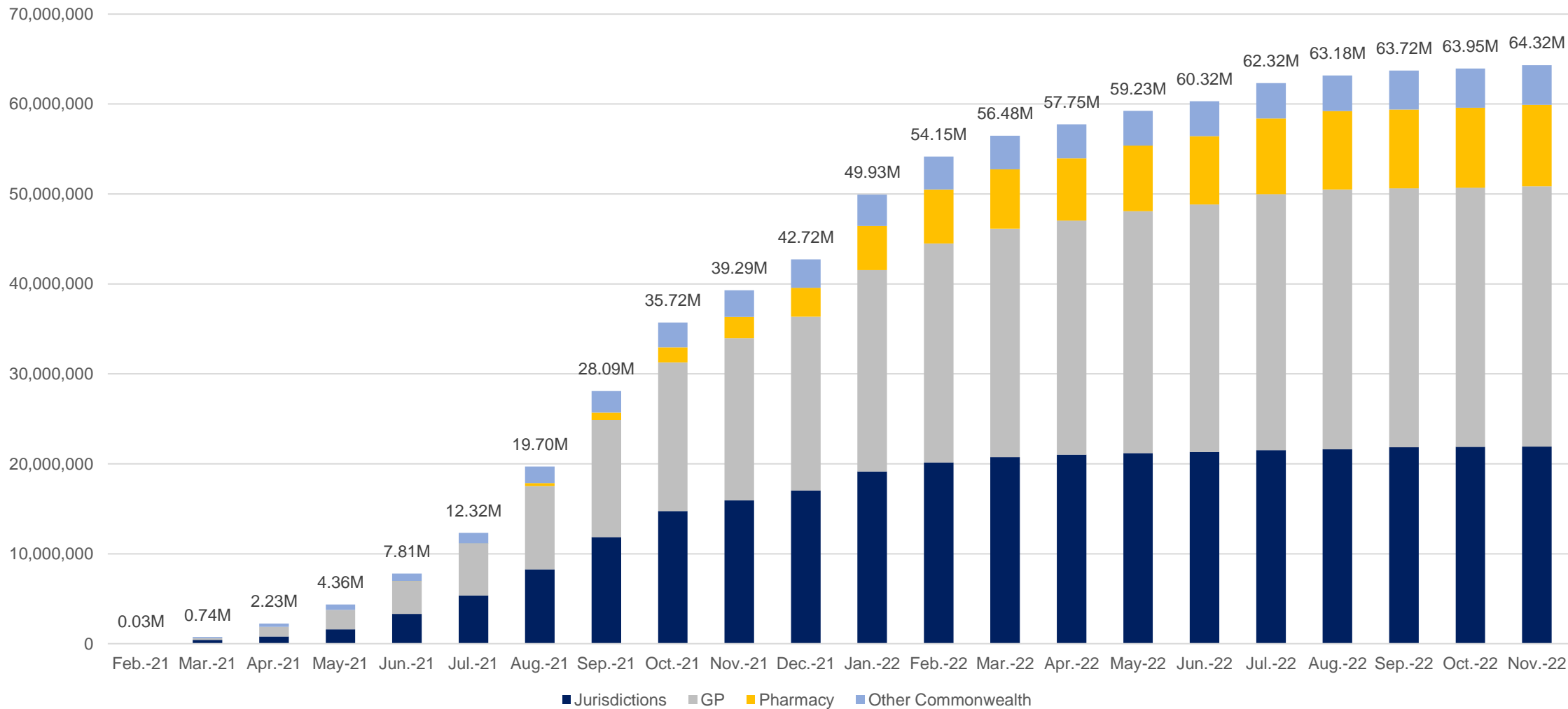


Individuals vaccinated by residential location



# Cumulative doses administered by channel

Data as at:  
30 Nov 2022  
Updated weekly



Source: Australian Immunisation Register



Data as at:  
30 Nov 2022  
Updated weekly

# Commonwealth primary care



## Primary care vaccine administration sites

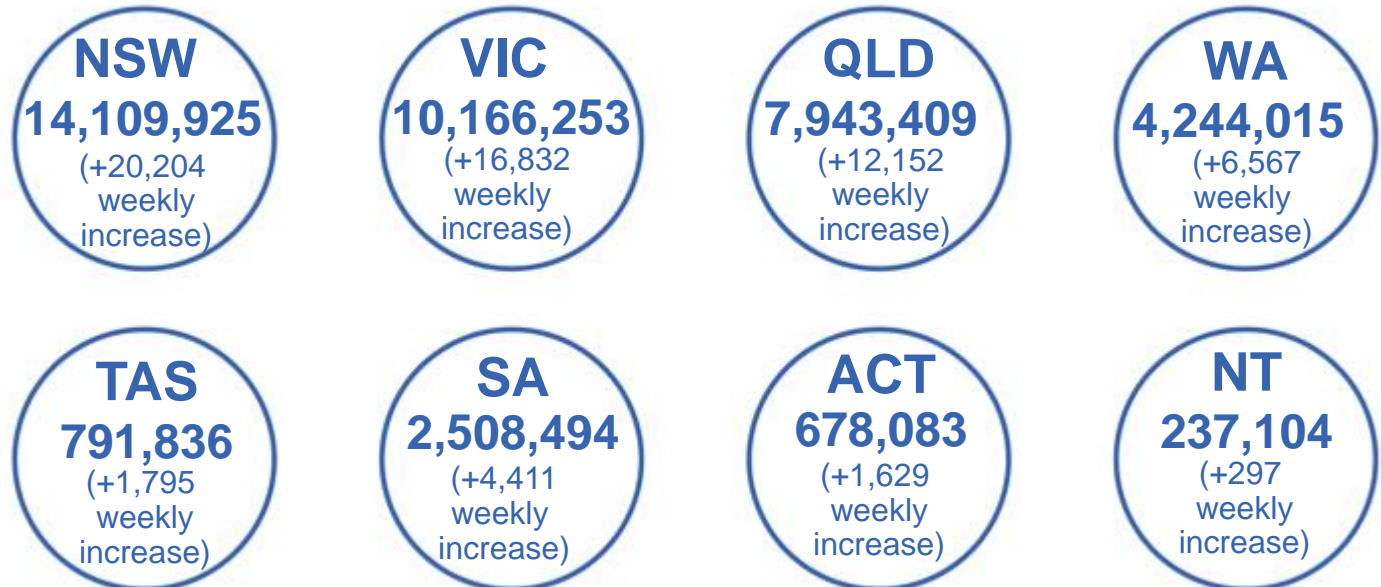
<b>3,423</b>	<b>60</b>	<b>135#</b>	<b>2,717</b>
GPs	CVCs	ACCHS	Pharmacies



**41,060,783** total vaccine doses administered  
in primary care settings  
**+64,103** weekly increase

## Primary care vaccinations by provider type

	Doses administered	Weekly increase
General Practice*	31,924,410	29,892
Pharmacy	9,136,373	34,211



**381,664**

doses administered to persons residing in other territories or with missing residential information

\*General practice includes Commonwealth Vaccination Clinics, Aboriginal Community Health Centres, Royal Flying Doctor Service and other Commonwealth vaccination facilities

#Primary care site numbers are reported as at 28 November 2022 and only include active sites

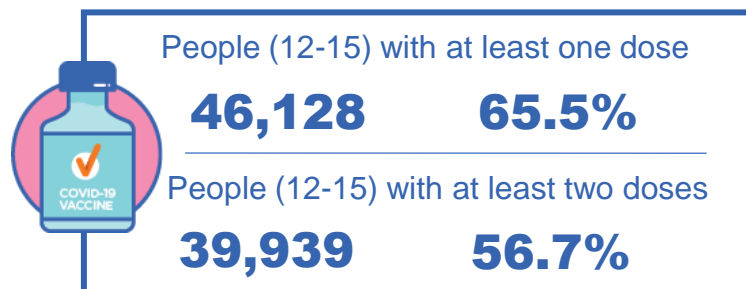
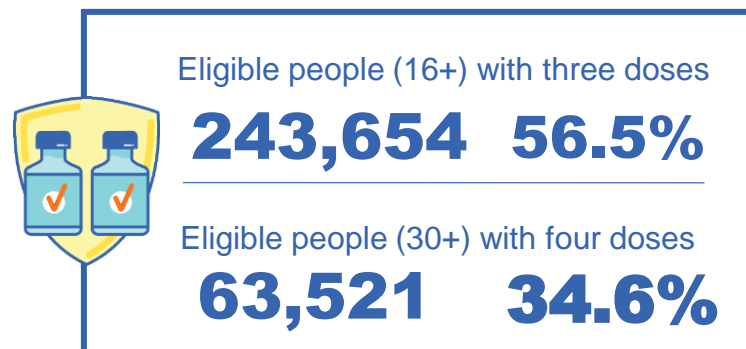
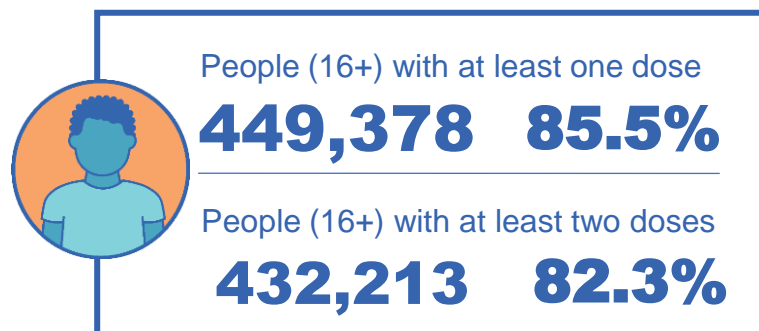
Source: Australian Immunisation Register

# Aboriginal and Torres Strait Islander peoples

## Number of people vaccinated

Data as at:  
30 Nov 2022  
Updated weekly

Australia's COVID-19  
Vaccine Program



### 138 Aboriginal community controlled health services (ACCHS) sites

0#	29	23	41	13	2	13	17
<b>ACT</b>	<b>NSW</b>	<b>NT</b>	<b>QLD</b>	<b>SA</b>	<b>TAS</b>	<b>VIC</b>	<b>WA</b>

Residential State	Individuals Dose 1 % (16+)	Individuals Dose 2 % (16+)	Individuals Dose 3 % Eligible (aged 16+)	Individuals Dose 4 % Eligible (aged 30+)
ACT	92.2%	90.1%	65.7%	41.6%
NSW	87.9%	86.1%	53.2%	37.6%
NT	90.2%	86.3%	70.4%	25.7%
QLD	82.4%	78.9%	49.2%	37.2%
SA	81.4%	76.2%	61.1%	38.0%
TAS	89.2%	86.9%	60.1%	41.2%
VIC	90.9%	89.0%	62.4%	35.9%
WA	87.6%	82.3%	66.6%	29.6%
Unknown/Other Territories	73.3%	68.2%	51.2%	24.0%
<b>National Coverage %</b>	<b>85.5%</b>	<b>82.3%</b>	<b>56.5%</b>	<b>34.6%</b>
<b>Number with a Dose</b>	<b>449,378</b>	<b>432,213</b>	<b>243,654</b>	<b>63,521</b>
<b>Total / Eligible Population</b>	<b>525,340</b>	<b>525,340</b>	<b>431,025</b>	<b>183,406</b>

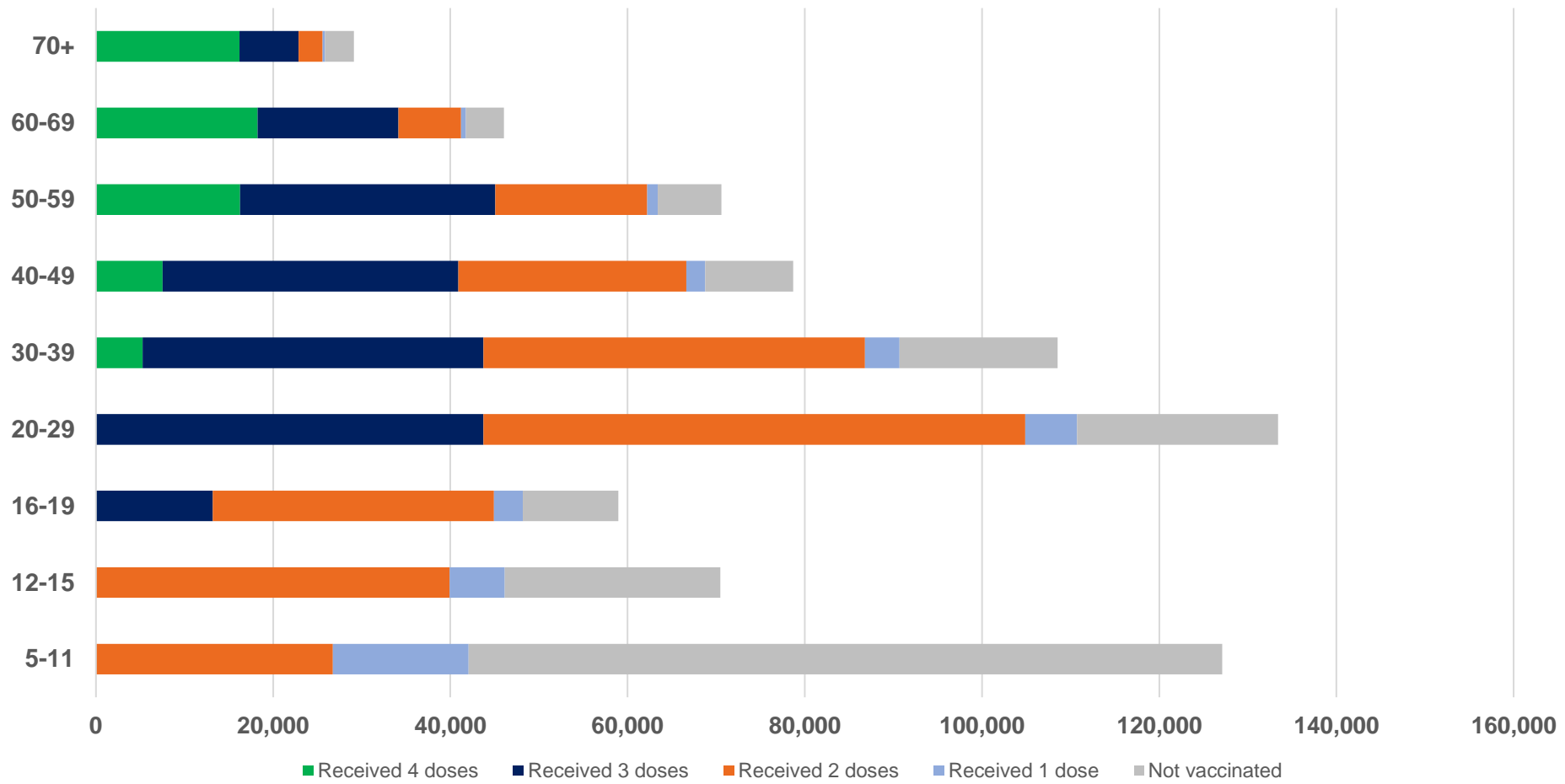
Identifying as Aboriginal and Torres Strait Islander is optional and the estimated population may be under reported. Numbers include all Aboriginal and Torres Strait Islander peoples who have received a vaccination, and are not limited to those administered in an ACCHS setting. The total population refers to the number of individuals that identify as Aboriginal and Torres Strait Islander in the Australian Immunisation Register, while the eligible population refers to the number of these individuals who meet the criteria for a further dose (based on completion of previous doses, age, and time period elapsed since last dose). Please note there may be people under 30 who are eligible, but these are not included in coverage rates or population to protect privacy.

#ACCHS in the ACT are currently operating as Commonwealth Vaccine Clinics so not included to avoid double counting.

# Aboriginal and Torres Strait Islander peoples

## Number of people vaccinated by age

Data as at:  
30 Nov 2022  
Updated weekly



Source: Australian Immunisation Register

# Individuals with Culturally and Linguistically Diverse (CALD) backgrounds data

Data as at:  
20 November 2022  
Updated weekly

Australia's COVID-19  
Vaccine Program

## People over the age of 16

CALD population *	Total number of individuals in cohort	% People with at least one dose	% People who received two doses	% of eligible people who received three or more doses
General population	20,629,070	>95.0%	>95.0%	72.3%
People born overseas	4,310,597	94.7%	94.2%	73.6%
Speaks a language other than English at home	3,990,800	94.3%	93.7%	69.5%

	General population			Born Overseas			Speaks a language other than English at home		
	% with at least one dose	% who received two doses	% of eligible people who received three or more doses	% with at least one dose	% who received two doses	% of eligible people who received three or more doses	% with at least one dose	% who received two doses	% of eligible people who received three or more doses
ACT	>95.0%	>95.0%	80.8%	>95.0%	>95.0%	79.3%	>95.0%	>95.0%	76.7%
NSW	>95.0%	>95.0%	70.4%	>95.0%	94.5%	71.1%	94.3%	93.7%	66.4%
NT	88.6%	86.6%	79.7%	>95.0%	>95.0%	88.5%	94.4%	94.0%	87.3%
Qld	93.0%	91.6%	65.3%	92.4%	91.7%	68.1%	92.7%	91.9%	64.8%
SA	93.4%	91.7%	76.2%	93.0%	92.1%	75.8%	92.0%	91.0%	72.1%
Tas	>95.0%	93.5%	74.7%	94.0%	93.5%	76.6%	94.1%	93.5%	72.7%
Vic	>95.0%	>95.0%	74.4%	>95.0%	>95.0%	73.7%	94.9%	94.3%	69.9%
WA	>95.0%	94.9%	83.5%	>95.0%	94.8%	85.8%	>95.0%	94.8%	83.8%

\*Individuals with Culturally and Linguistically Diverse (CALD) backgrounds are as reported in the 2021 Census, excluding those who have since departed Australia; deceased persons; those born in the UK, Ireland or NZ; and Aboriginal and/or Torres Strait Islander peoples. There is overlap across CALD cohorts where individuals may have reported they had more than one CALD characteristic in the 2021 Census.

Small negative changes may appear when compared with the previous report due to perturbation, in particular for small population groups.

Source: Australian Immunisation Register linked to the Multi-Agency Data Integration Project (Census 2021 characteristics). Coverage rates for the general population are as published for 23 November 2022.

Data as at:  
1 Dec 2022  
Updated weekly

# Residential aged care vaccination rollout



**170,548**  
Aged care residents with at least one dose



**169,231**  
Aged care residents with at least two doses



**162,866**  
Aged care residents with at least three doses



**132,670**  
Aged care residents with at least four doses



**>99%**

Aged care workers with at least two doses nationally

## Aged care resident vaccinations

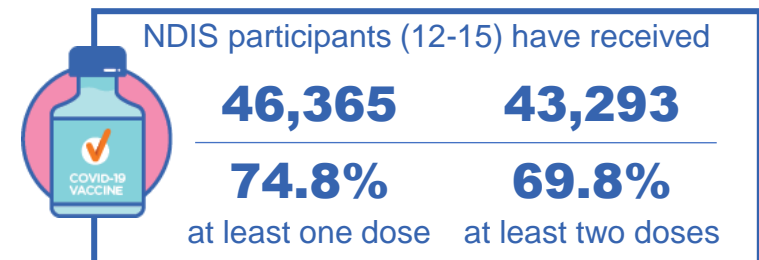
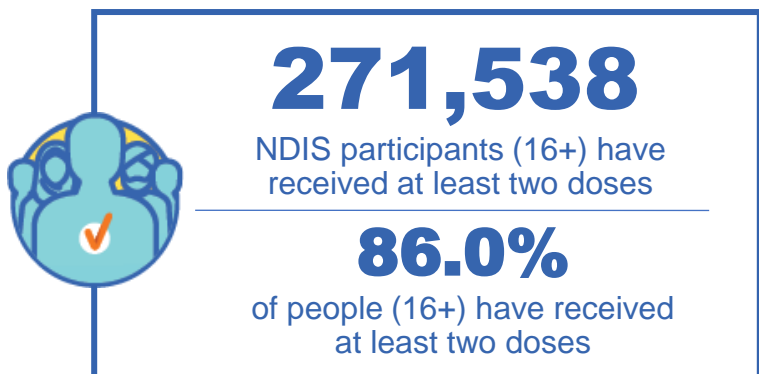
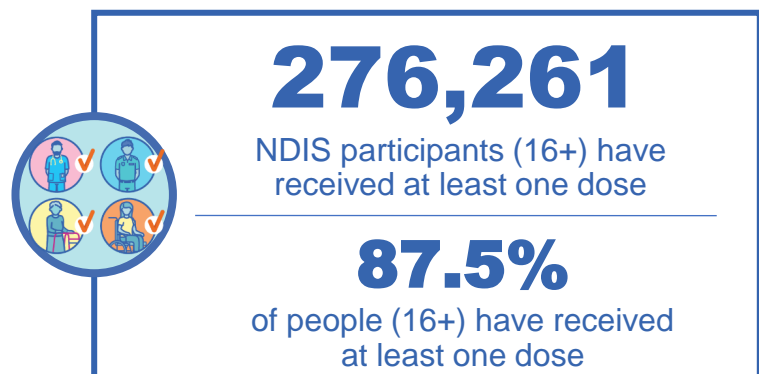
	Aged care residents with at least one dose	Aged care residents with at least two doses	Aged care residents with at least three doses	Aged care residents with at least four doses
NSW	97.0%	96.2%	92.5%	73.6%
VIC	96.9%	96.3%	93.4%	79.8%
QLD	95.1%	94.3%	90.3%	72.3%
SA	96.0%	94.7%	90.9%	73.7%
WA	96.9%	96.0%	92.0%	72.7%
TAS	95.9%	95.0%	91.8%	76.4%
NT	96.9%	95.1%	90.4%	72.7%
ACT	98.0%	97.4%	95.0%	82.4%
<b>National</b>	<b>96.5%</b>	<b>95.7%</b>	<b>92.1%</b>	<b>75.0%</b>

Source: Residential aged care provider self-reported COVID-19 vaccination information and matched AIR data of residents in permanent residential RACFs.

# National Disability Insurance Scheme (NDIS) reported vaccinations

Data as at:  
27 Nov 2022  
Updated weekly

Australia's COVID-19  
Vaccine Program



## NDIS participant vaccinations

	% People aged 16+ with at least one dose	% People aged 16+ with at least two doses	% People aged 16+ with three doses	% People aged 16+ with four doses
ACT	89.8%	88.7%	83.6%	38.8%
NSW	88.0%	86.7%	75.2%	35.3%
NT	78.5%	76.2%	78.9%	27.1%
QLD	85.6%	84.0%	71.3%	29.6%
SA	85.5%	83.6%	78.3%	31.2%
TAS	87.9%	86.0%	76.3%	31.7%
VIC	88.7%	87.3%	77.3%	32.8%
WA	88.9%	87.2%	82.0%	33.3%
National	87.5%	86.0%	76.1%	32.9%

Source: Linkage between National Disability Insurance Agency data and the Australian Immunisation Register. Total NDIS participant numbers as at 01 November. Australian Immunisation Register data as at 27 November. Includes all participants regardless of residence type.