



Australian Government

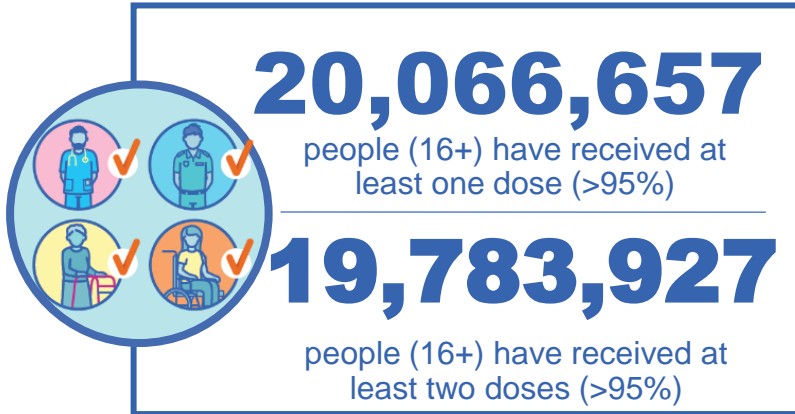
Department of Health and Aged Care

COVID-19 Vaccine Roll-out

24 November 2022

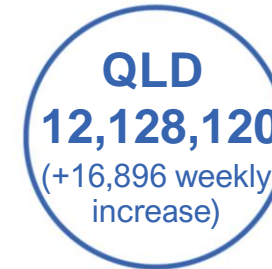
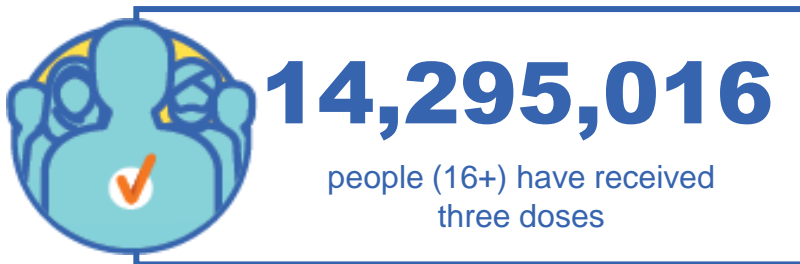
Data as at:
23 Nov 2022
Updated weekly

Total vaccine doses



64,248,569 total vaccine doses administered

+93,493 weekly increase



*Administration state breakdown indicates state in which a vaccine was administered

Source: Australian Immunisation Register

Third Doses

Data as at:
23 Nov 2022##
Updated weekly



243,279

Indigenous people who have received three or more doses

56.5%

of eligible population (430,615)



162,752

Aged Care Residents who have received three or more doses##

96.2%

of eligible population (169,218)



206,103

NDIS participants

23,610

NDIS residents

who have received three or more doses#

76.2%

of eligible population (270,000)

90.9%

of eligible population (25,000)



14,295,016 total people who have received three or more doses

+9,361 weekly increase

72.3% of eligible population (19,769,883)

	Number of People	Weekly Increase	% of Eligible
ACT	281,035	231	80.8%
NSW	4,379,667	3,434	70.4%
NT	133,187	11	79.7%
QLD	2,488,234	2,410	65.3%
SA	1,026,068	616	76.2%
TAS	324,797	131	74.7%
VIC	3,796,032	2,392	74.4%
WA	1,730,423	583	83.5%

135,573

doses administered to persons residing in other territories or with missing residential information


*People may belong to multiple groups and could be represented in the above breakdowns multiple times.
#NDIS participants data as at 20 November 2022. ##Aged Care Residents data as at 24 November 2022.

Source: Australian Immunisation Register

Fourth Doses

Data as at:
23 Nov 2022#
Updated weekly

Australia's COVID-19
Vaccine Program



132,042
Aged Care Residents who have received four or more doses#

83.1%
of eligible population (158,958)



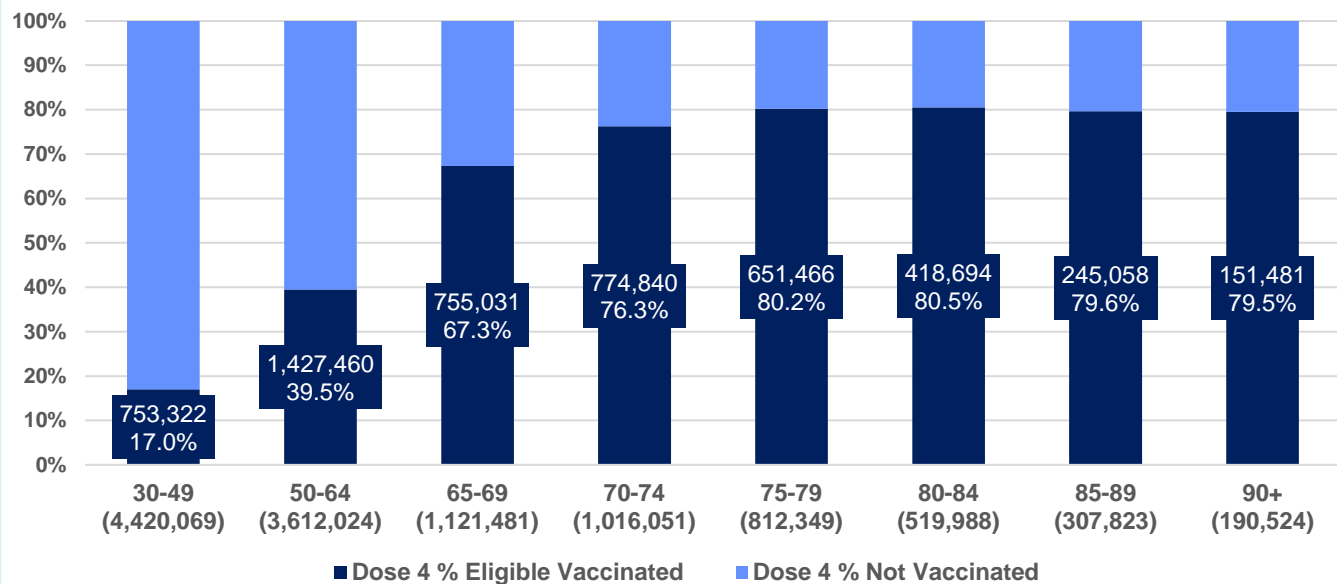
5,219,681
+63,201
43.1%
2,996,570
75.5%

total people (16+) who have received four doses
weekly increase (16+)

of eligible population (30+) (12,000,309)

total people (65+) who have received four doses
of eligible population (65+) (3,968,216)

% Individuals eligible vaccinated by current age



	Number of People 16+	Weekly Increase
ACT	113,438	2,004
NSW	1,665,483	19,188
NT	27,474	440
QLD	997,933	11,931
SA	412,259	4,706
TAS	139,646	1,412
VIC	1,297,173	16,832
WA	534,556	6,450

31,719 doses administered to persons residing in other territories or with missing residential information

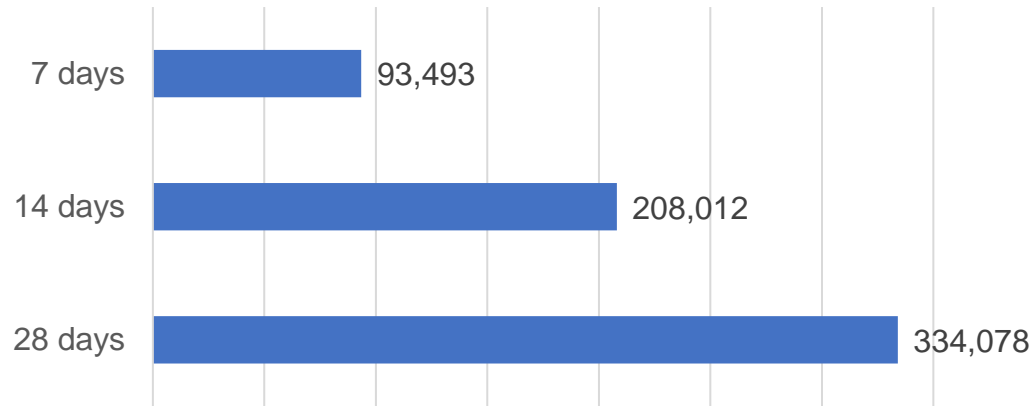
*People become eligible for a fourth dose three months after their third dose. Individuals may belong to multiple groups and could be represented in the above multiple times.
#Aged Care Residents data as at 24 November 2022.

Source: Australian Immunisation Register

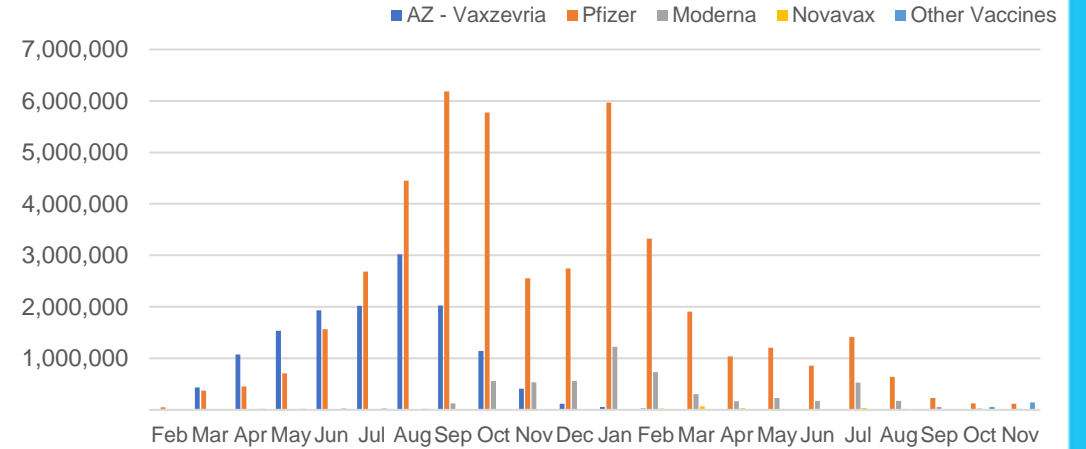
Vaccine milestone charts

Data as at:
23 Nov 2022
Updated weekly

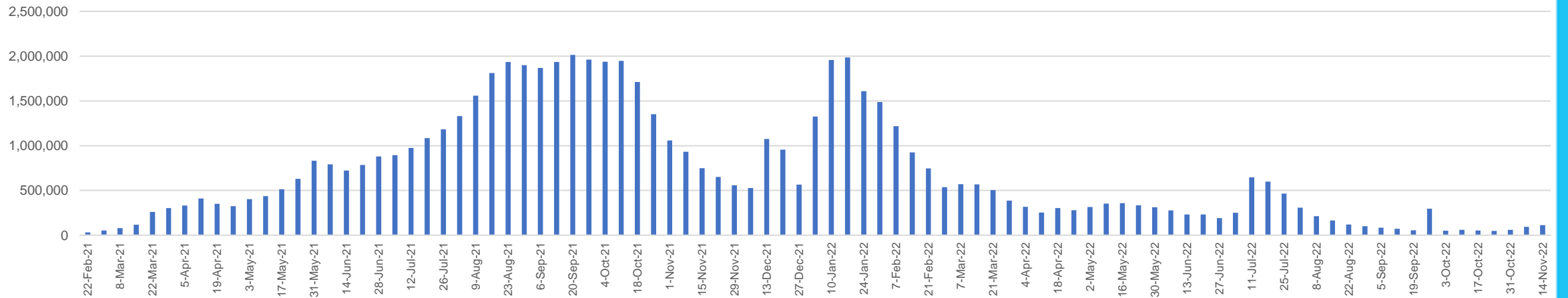
Doses Reported



Doses by administration month and vaccine type



Doses Administered by Week



*Sourced from the Australian Immunisation Register.

Data as at:
23 Nov 2022
Updated weekly

Doses by age and jurisdiction

	AUS	ACT	NSW	NT	QLD	SA	TAS	VIC	WA
5 to 11 - dose 1	1,144,921	30,771	343,372	12,040	196,963	79,890	27,042	311,199	133,266
5 to 11 - dose 2	908,922	27,337	281,460	8,625	150,890	64,081	22,573	246,495	102,164
5 to 11 - population	2,269,663	40,719	711,525	25,120	476,567	149,048	45,549	568,488	252,235
5 to 11 % with dose 1	50.44%	75.57%	48.26%	47.93%	41.33%	53.60%	59.37%	54.74%	52.83%
5 to 11 % with dose 2	40.05%	67.14%	39.56%	34.34%	31.66%	42.99%	49.56%	43.36%	40.50%
12 to 15 - dose 1	1,025,062	20,015	314,544	10,271	199,478	66,859	22,277	267,447	113,086
12 to 15 - dose 2	962,445	19,433	298,875	9,215	184,712	62,715	21,014	253,608	103,824
12 to 15 - population	1,279,387	20,888	399,352	13,190	278,225	85,541	27,469	313,711	140,783
12 to 15 % with dose 1	80.12%	95.82%	78.76%	77.87%	71.70%	78.16%	81.10%	85.25%	80.33%
12 to 15 % with dose 2	75.23%	93.03%	74.84%	69.86%	66.39%	73.32%	76.50%	80.84%	73.75%
16 and over - dose 1	20,066,657	353,135	6,311,279	171,177	3,869,672	1,374,157	442,989	5,166,547	2,099,679
16 and over - dose 2	19,783,927	348,216	6,228,836	167,307	3,813,250	1,348,963	435,352	5,105,908	2,073,717
16 and over - dose 3	14,295,016	281,035	4,379,667	133,187	2,488,234	1,026,068	324,797	3,796,032	1,730,423
16 and over - population	20,629,070	364,811	6,504,442	193,211	4,161,009	1,471,062	465,436	5,279,175	2,185,967
16 and over % with dose 1	97.27%	96.80%	97.03%	88.60%	93.00%	93.41%	95.18%	97.87%	96.05%
16 and over % with dose 2	95.90%	95.45%	95.76%	86.59%	91.64%	91.70%	93.54%	96.72%	94.86%
16 and over % with dose 3	69.30%	77.04%	67.33%	68.93%	59.80%	69.75%	69.78%	71.91%	79.16%
30 and over - dose 1	15,682,375	273,169	4,958,756	126,761	3,022,082	1,091,870	351,666	4,030,002	1,643,939
30 and over - dose 2	15,496,643	269,854	4,903,007	124,583	2,986,660	1,076,547	346,906	3,988,250	1,627,163
30 and over - dose 3	12,090,994	230,372	3,736,739	104,733	2,164,488	877,018	280,651	3,169,654	1,426,147
30 and over - dose 4	5,177,352	112,063	1,650,635	26,939	991,365	410,062	138,721	1,285,287	531,102
30 and over - population	16,012,407	268,806	5,065,001	140,954	3,219,394	1,157,853	368,927	4,079,079	1,709,089
30 and over % with dose 1	97.94%	>99%	97.90%	89.93%	93.87%	94.30%	95.32%	98.80%	96.19%
30 and over % with dose 2	96.78%	>99%	96.80%	88.39%	92.77%	92.98%	94.03%	97.77%	95.21%
30 and over % with dose 3	75.51%	85.70%	73.78%	74.30%	67.23%	75.75%	76.07%	77.71%	83.44%
30 and over % with dose 4	32.33%	41.69%	32.59%	19.11%	30.79%	35.42%	37.60%	31.51%	31.08%
65 and over - dose 1	4,362,809	64,127	1,410,610	20,330	847,229	348,017	114,151	1,088,526	428,449
65 and over - dose 2	4,326,391	63,393	1,398,990	20,080	841,259	345,448	113,475	1,079,063	425,585
65 and over - dose 3	3,979,720	60,113	1,274,762	18,283	773,422	324,038	107,109	985,021	404,112
65 and over - dose 4	2,996,570	50,155	953,744	11,644	596,293	253,326	85,185	723,025	302,467
65 and over - population	4,313,779	60,463	1,393,416	21,593	864,448	352,458	116,037	1,072,562	431,884
65 and over % with dose 1	>99%	>99%	>99%	94.15%	98.01%	98.74%	98.37%	>99%	>99%
65 and over % with dose 2	>99%	>99%	>99%	92.99%	97.32%	98.01%	97.79%	>99%	98.54%
65 and over % with dose 3	92.26%	>99%	91.48%	84.67%	89.47%	91.94%	92.31%	91.84%	93.57%
65 and over % with dose 4	69.47%	82.95%	68.45%	53.92%	68.98%	71.87%	73.41%	67.41%	70.03%

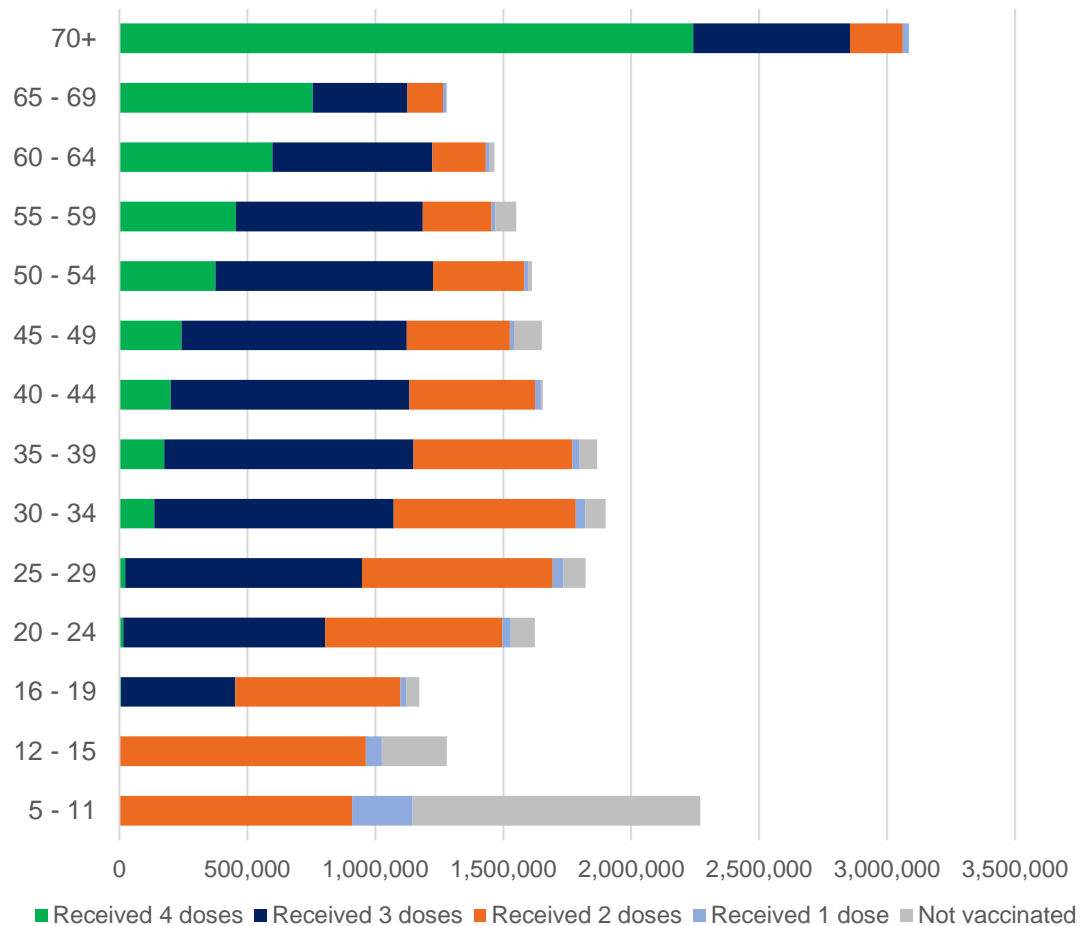
*National population will not equal sum of listed jurisdictions due to a small number of people counted in national population residing in some 'other' territories. Sum of state doses will not add to national total as some records are unable to be geocoded to a State or Territory.

Doses sourced from Australian Immunisation Register, population from ABS ERP June 2021

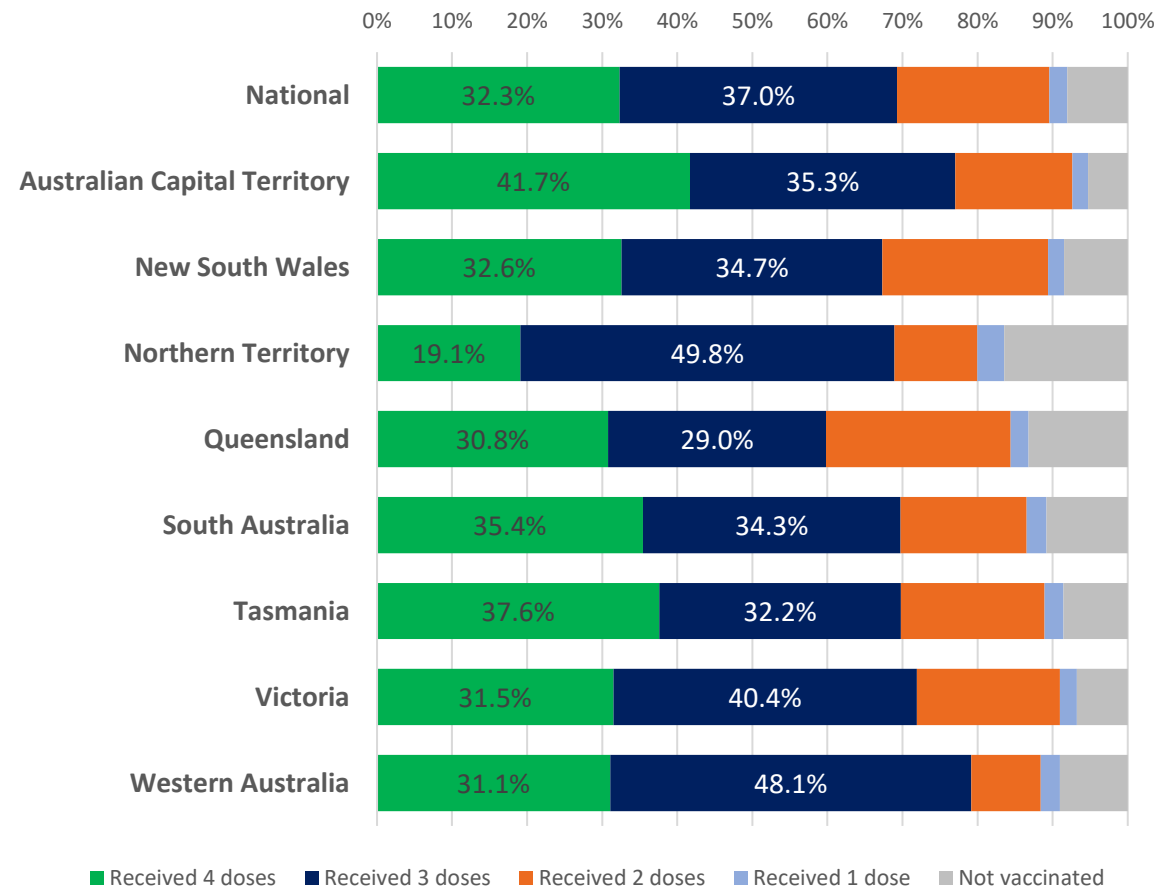
Data as at:
23 Nov 2022
Updated weekly

Vaccinations by age and location

Number of people vaccinated by age

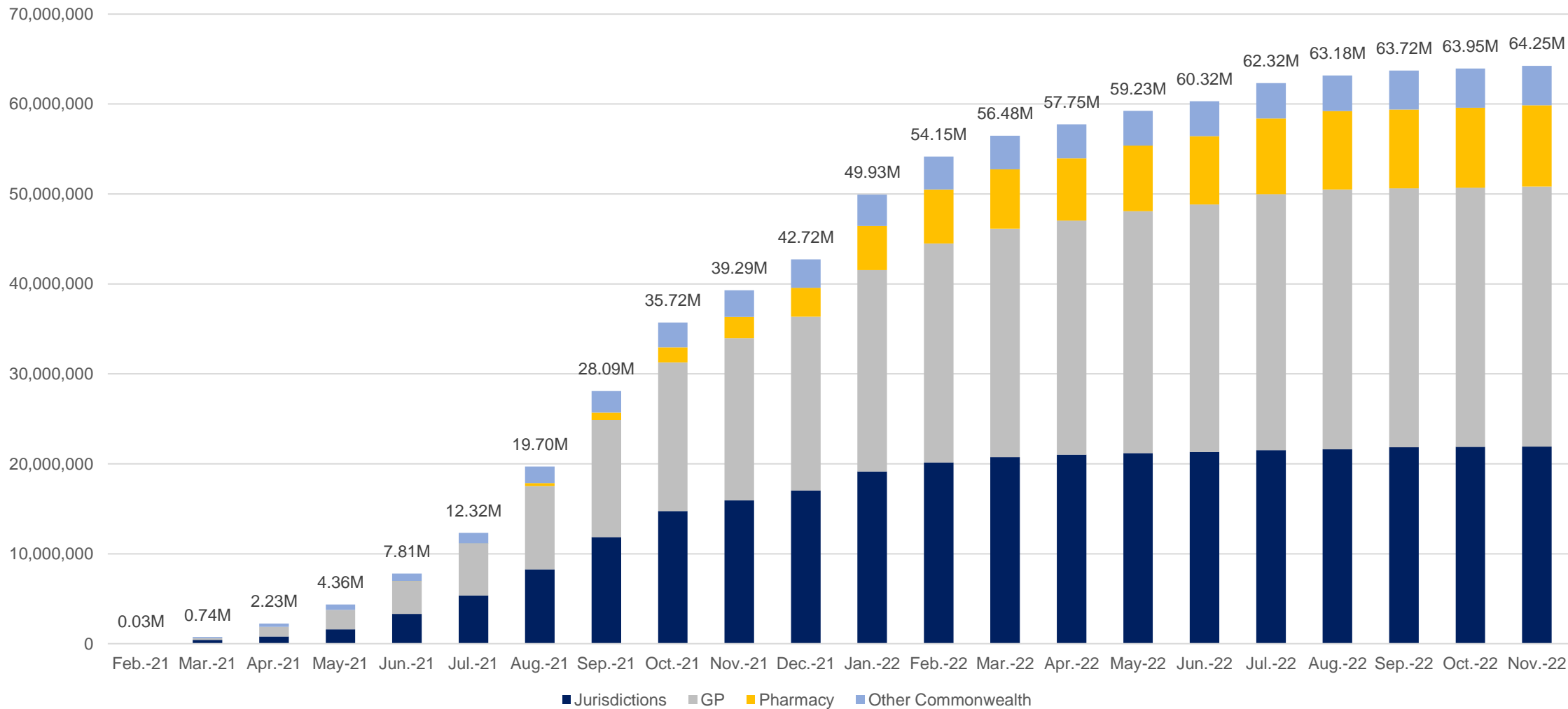


Individuals vaccinated by residential location



Cumulative doses administered by channel

Data as at:
23 Nov 2022
Updated weekly



Source: Australian Immunisation Register

Data as at:
23 Nov 2022
Updated weekly

Commonwealth primary care



Primary care vaccine administration sites#

3,451	62	131	2,680
GPs	CVCs	ACCHS	Pharmacies



40,996,680 total vaccine doses administered
in primary care settings
+85,211 weekly increase

Primary care vaccinations by provider type

	Doses administered	Weekly increase
General Practice*	31,894,518	37,934
Pharmacy	9,102,162	47,277

NSW
14,089,721
(+27,226
weekly
increase)

VIC
10,149,421
(+22,163
weekly
increase)

QLD
7,931,257
(+17,632
weekly
increase)

WA
4,237,448
(+8,025
weekly
increase)

TAS
790,041
(+1,928
weekly
increase)

SA
2,504,083
(+6,218
weekly
increase)

ACT
676,454
(+2,608
weekly
increase)

NT
236,807
(+522
weekly
increase)

381,448

doses administered to persons
residing in other territories or with
missing residential information

*General practice includes Commonwealth Vaccination Clinics, Aboriginal Community Health Centres, Royal Flying Doctor Service and other Commonwealth vaccination facilities

#Primary care site numbers are reported as at 21 November 2022 and only include active sites.

Source: Australian Immunisation Register

Aboriginal and Torres Strait Islander peoples

Number of people vaccinated

Data as at:
23 Nov 2022
Updated weekly

Australia's COVID-19
Vaccine Program



People (16+) with at least one dose

449,083 **85.5%**

People (16+) with at least two doses

431,900 **82.3%**



Eligible people (16+) with three doses

243,279 **56.5%**

Eligible people (30+) with four doses

62,952 **34.5%**



People (12-15) with at least one dose

46,182 **65.5%**

People (12-15) with at least two doses

39,994 **56.8%**

134 Aboriginal community controlled health services (ACCHS) sites

0#	27	22	39	13	2	13	18
ACT	NSW	NT	QLD	SA	TAS	VIC	WA

Residential State	Individuals Dose 1 % (16+)	Individuals Dose 2 % (16+)	Individuals Dose 3 % Eligible (aged 16+)	Individuals Dose 4 % Eligible (aged 30+)
ACT	92.2%	90.1%	65.6%	41.1%
NSW	87.9%	86.1%	53.2%	37.5%
NT	90.2%	86.2%	70.4%	25.5%
QLD	82.4%	78.9%	49.1%	37.0%
SA	81.3%	76.2%	61.1%	37.8%
TAS	89.2%	86.9%	60.2%	41.0%
VIC	90.9%	89.0%	62.3%	35.7%
WA	87.6%	82.3%	66.6%	29.4%
Unknown/Other Territories	73.4%	68.3%	51.1%	23.8%
National Coverage %	85.5%	82.3%	56.5%	34.5%
Number with a Dose	449,083	431,900	243,279	62,952
Total / Eligible Population	524,983	524,983	430,615	182,688

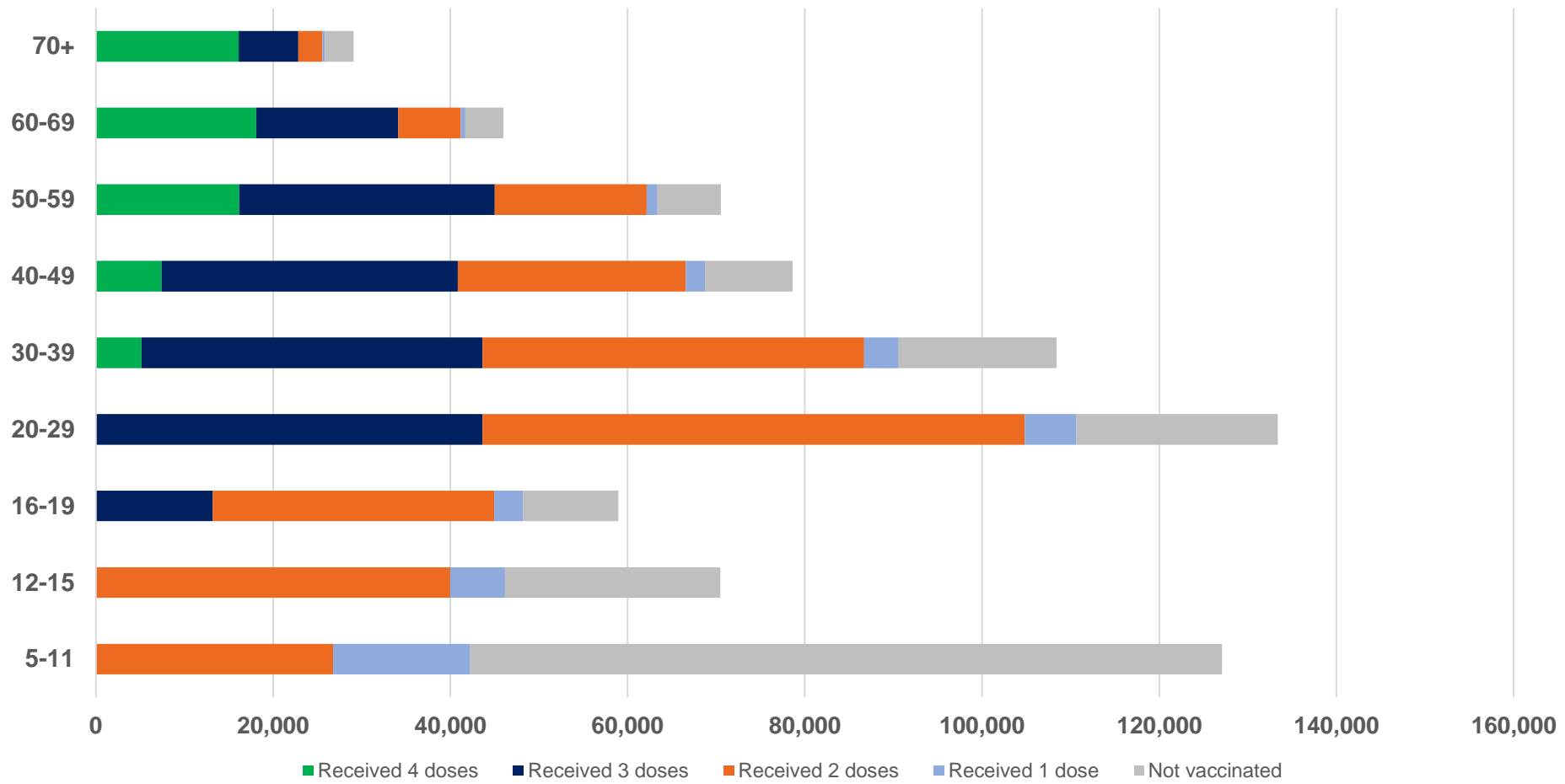
Identifying as Aboriginal and Torres Strait Islander is optional and the estimated population may be under reported. Numbers include all Aboriginal and Torres Strait Islander peoples who have received a vaccination, and are not limited to those administered in an ACCHS setting. The total population refers to the number of individuals that identify as Aboriginal and Torres Strait Islander in the Australian Immunisation Register, while the eligible population refers to the number of these individuals who meet the criteria for a further dose (based on completion of previous doses, age, and time period elapsed since last dose). Please note there may be people under 30 who are eligible, but these are not included in coverage rates or population to protect privacy.

#ACCHS in the ACT are currently operating as Commonwealth Vaccine Clinics so not included to avoid double counting.

Data as at:
23 Nov 2022
Updated weekly

Aboriginal and Torres Strait Islander peoples

Number of people vaccinated by age



Source: Australian Immunisation Register

Individuals with Culturally and Linguistically Diverse (CALD) backgrounds data

Data as at:
13 November 2022
Updated weekly

Australia's COVID-19
Vaccine Program

People over the age of 16

CALD population *	Total number of individuals in cohort	% People with at least one dose	% People who received two doses	% of eligible people who received three or more doses
General population	20,629,070	>95.0%	>95.0%	72.3%
People born overseas	4,310,597	94.6%	94.1%	73.5%
Speaks a language other than English at home	3,990,800	94.2%	93.6%	69.5%

	General population			Born Overseas			Speaks a language other than English at home		
	% with at least one dose	% who received two doses	% of eligible people who received three or more doses	% with at least one dose	% who received two doses	% of eligible people who received three or more doses	% with at least one dose	% who received two doses	% of eligible people who received three or more doses
ACT	>95.0%	>95.0%	80.7%	>95.0%	>95.0%	79.3%	>95.0%	>95.0%	76.6%
NSW	>95.0%	>95.0%	70.3%	>95.0%	94.5%	71.0%	94.2%	93.6%	66.3%
NT	88.6%	86.6%	79.7%	>95.0%	94.8%	88.4%	94.1%	93.6%	87.2%
Qld	93.0%	91.6%	65.3%	92.3%	91.6%	68.1%	92.6%	91.8%	64.7%
SA	93.4%	91.7%	76.1%	92.9%	92.0%	75.7%	91.9%	90.9%	72.1%
Tas	>95.0%	93.5%	74.7%	93.7%	93.1%	76.6%	93.7%	93.0%	72.7%
Vic	>95.0%	>95.0%	74.4%	>95.0%	94.9%	73.7%	94.8%	94.2%	69.8%
WA	>95.0%	94.8%	83.5%	>95.0%	94.7%	85.8%	>95.0%	94.8%	83.8%

*Individuals with Culturally and Linguistically Diverse (CALD) backgrounds are as reported in the 2021 Census, excluding those who have since departed Australia; deceased persons; those born in the UK, Ireland or NZ; and Aboriginal and/or Torres Strait Islander peoples. There is overlap across CALD cohorts where individuals may have reported they had more than one CALD characteristic in the 2021 Census.

Small negative changes may appear when compared with the previous report due to perturbation, in particular for small population groups.


Source: Australian Immunisation Register linked to the Multi-Agency Data Integration Project (Census 2021 characteristics). Coverage rates for the general population are as published for 16 November 2022.

Data as at:
24 Nov 2022
Updated weekly

Residential aged care vaccination rollout



170,540
Aged care residents with at least one dose



169,218
Aged care residents with at least two doses



162,752
Aged care residents with at least three doses



132,042
Aged care residents with at least four doses



>99%
Aged care workers with at least two doses nationally

Aged care resident vaccinations

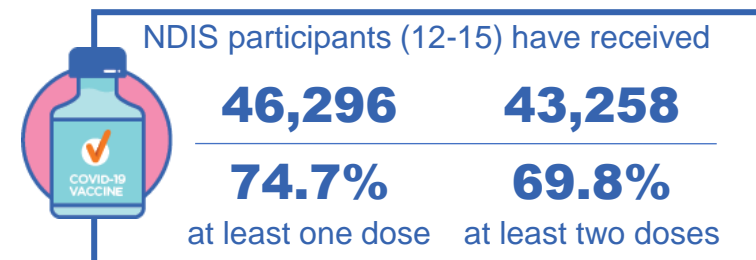
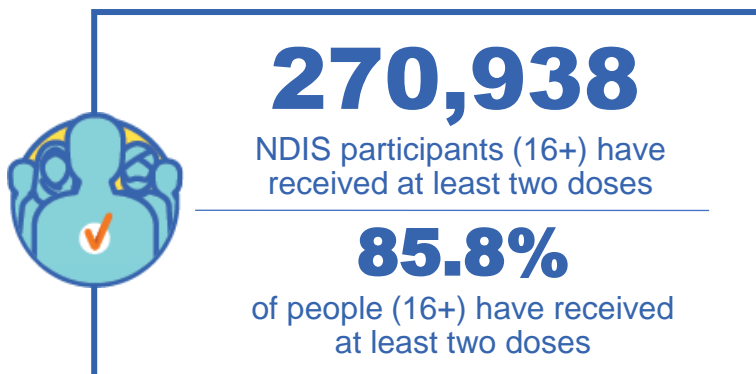
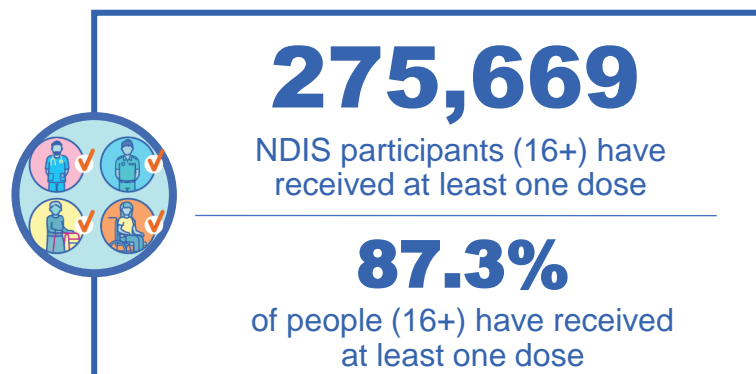
	Aged care residents with at least one dose	Aged care residents with at least two doses	Aged care residents with at least three doses	Aged care residents with at least four doses
NSW	96.9%	96.2%	92.4%	73.3%
VIC	96.9%	96.3%	93.4%	79.5%
QLD	95.1%	94.3%	90.2%	71.8%
SA	96.0%	94.7%	90.8%	73.3%
WA	96.9%	96.0%	92.0%	72.5%
TAS	95.9%	95.0%	91.7%	75.6%
NT	96.9%	95.1%	90.4%	72.7%
ACT	98.0%	97.4%	95.0%	82.4%
National	96.5%	95.7%	92.0%	74.7%

Source: Residential aged care provider self-reported COVID-19 vaccination information and matched AIR data of residents in permanent residential RACFs.

National Disability Insurance Scheme (NDIS) reported vaccinations

Data as at:
20 Nov 2022
Updated weekly

Australia's COVID-19
Vaccine Program



NDIS participant vaccinations

	% People aged 16+ with at least one dose	% People aged 16+ with at least two doses	% People aged 16+ with three doses	% People aged 16+ with four doses
ACT	89.7%	88.5%	83.5%	38.5%
NSW	87.9%	86.5%	75.2%	35.1%
NT	78.2%	75.9%	79.2%	27.0%
QLD	85.4%	83.8%	71.4%	29.4%
SA	85.3%	83.4%	78.3%	30.9%
TAS	87.9%	86.0%	76.5%	31.6%
VIC	88.5%	87.1%	77.4%	32.6%
WA	88.7%	87.0%	82.0%	33.0%
National	87.3%	85.8%	76.2%	32.6%

Source: Linkage between National Disability Insurance Agency data and the Australian Immunisation Register. Total NDIS participant numbers as at 01 November. Australian Immunisation Register data as at 20 November. Includes all participants regardless of residence type.