



Australian Government

Department of Health and Aged Care

COVID-19 Vaccine Roll-out

17 November 2022

Data as at:
16 Nov 2022
Updated weekly

Total vaccine doses



64,155,076 total vaccine doses administered

+114,519 weekly increase



20,061,968

people (16+) have received at least one dose (>95%)

19,779,901

people (16+) have received at least two doses (>95%)



14,285,655

people (16+) have received three doses



5,156,480

people (16+) have received four doses

NSW
19,893,730
(+34,437 weekly increase)

VIC
16,699,021
(+27,283 weekly increase)

QLD
12,111,224
(+24,731 weekly increase)

WA
6,989,127
(+10,510 weekly increase)

TAS
1,458,277
(+2,425 weekly increase)

SA
4,474,810
(+7,929 weekly increase)

ACT
1,907,154
(+6,503 weekly increase)

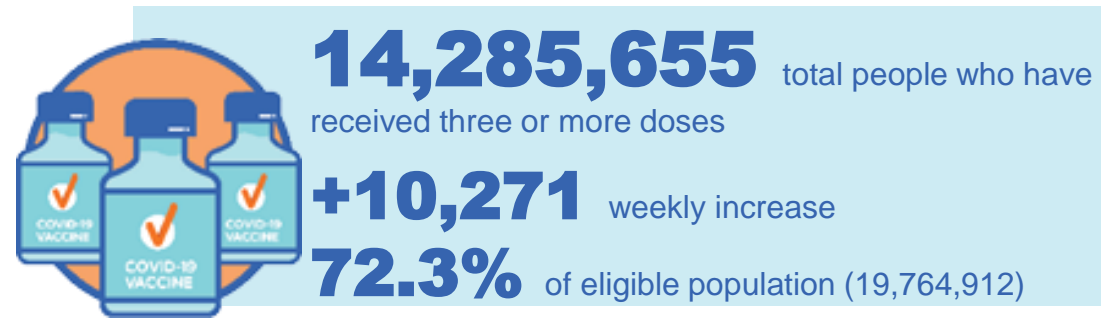
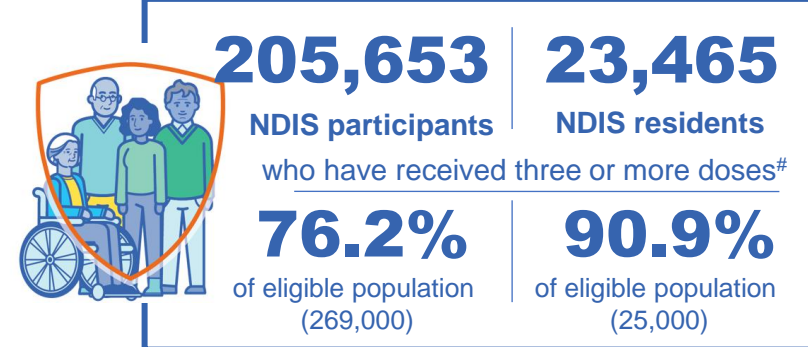
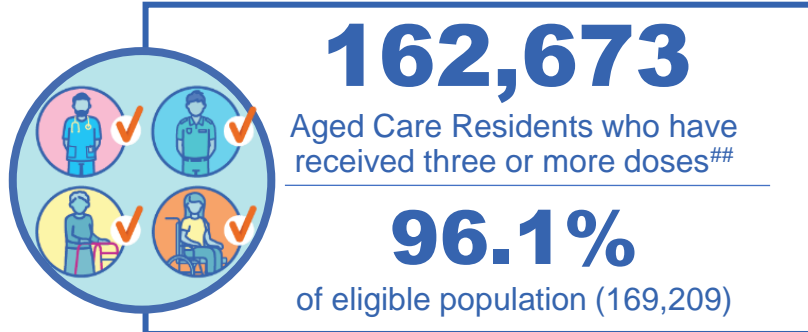
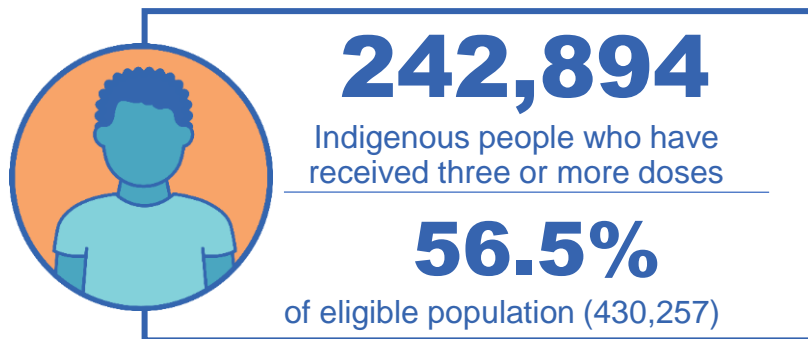
NT
621,733
(+701 weekly increase)

*Administration state breakdown indicates state in which a vaccine was administered

Source: Australian Immunisation Register

Third Doses

Data as at:
16 Nov 2022##
Updated weekly



	Number of People	Weekly Increase	% of Eligible
ACT	280,804	190	80.7%
NSW	4,376,233	3,634	70.3%
NT	133,176	<10	79.7%
QLD	2,485,824	2,781	65.3%
SA	1,025,452	575	76.1%
TAS	324,666	109	74.7%
VIC	3,793,640	2,504	74.4%
WA	1,729,840	730	83.5%

136,020 doses administered to persons residing in other territories or with missing residential information


*People may belong to multiple groups and could be represented in the above breakdowns multiple times.
#NDIS participants data as at 13 November 2022. ##Aged Care Residents data as at 17 November 2022.

Source: Australian Immunisation Register

Fourth Doses

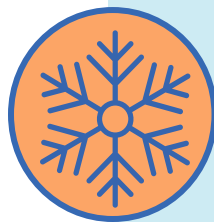
Data as at:
16 Nov 2022#
Updated weekly

Australia's COVID-19
Vaccine Program



131,487
Aged Care Residents who have received four or more doses#

82.9%
of eligible population (158,630)



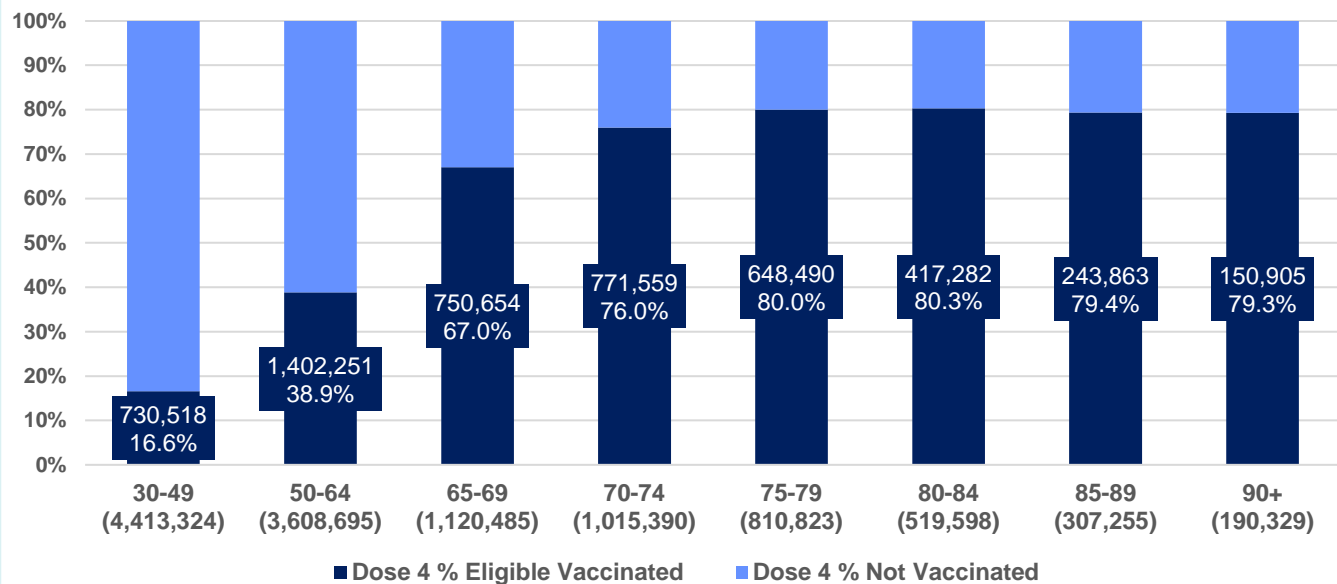
5,156,480
+82,829
42.7%
2,982,753
75.2%

total people (16+) who have received four doses
weekly increase (16+)

of eligible population (30+) (11,985,899)

total people (65+) who have received four doses
of eligible population (65+) (3,963,880)

% Individuals eligible vaccinated by current age



	Number of People 16+	Weekly Increase
ACT	111,434	2,313
NSW	1,646,295	24,236
NT	27,034	476
QLD	986,002	17,696
SA	407,553	5,945
TAS	138,234	1,876
VIC	1,280,341	21,728
WA	528,106	8,215

31,481

doses administered to persons residing in other territories or with missing residential information

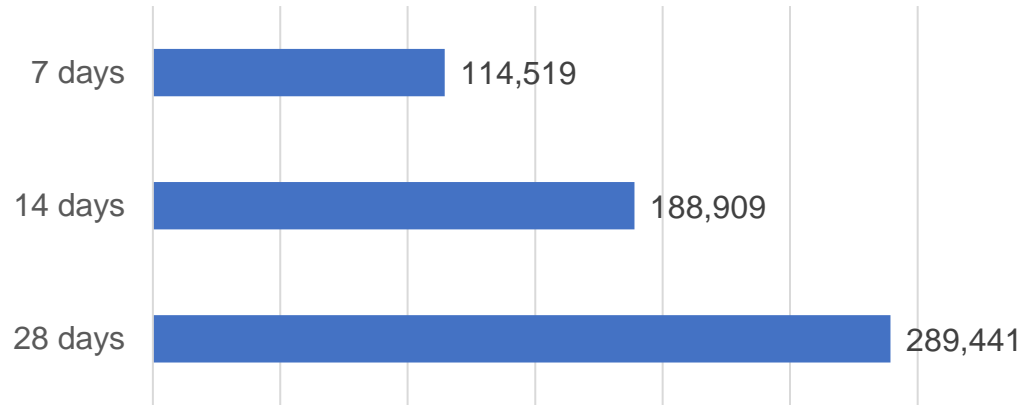
*People become eligible for a fourth dose three months after their third dose. Individuals may belong to multiple groups and could be represented in the above multiple times.
#Aged Care Residents data as at 17 November 2022.

Source: Australian Immunisation Register

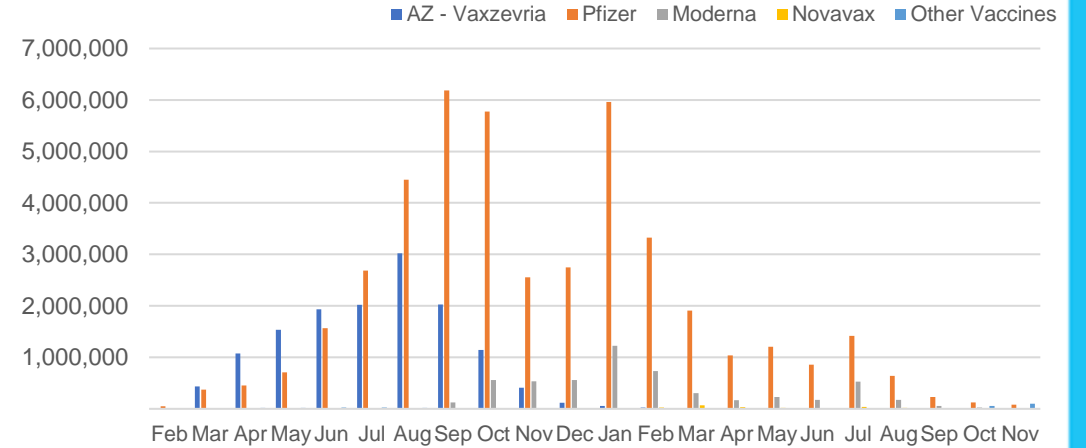
Vaccine milestone charts

Data as at:
16 Nov 2022
Updated weekly

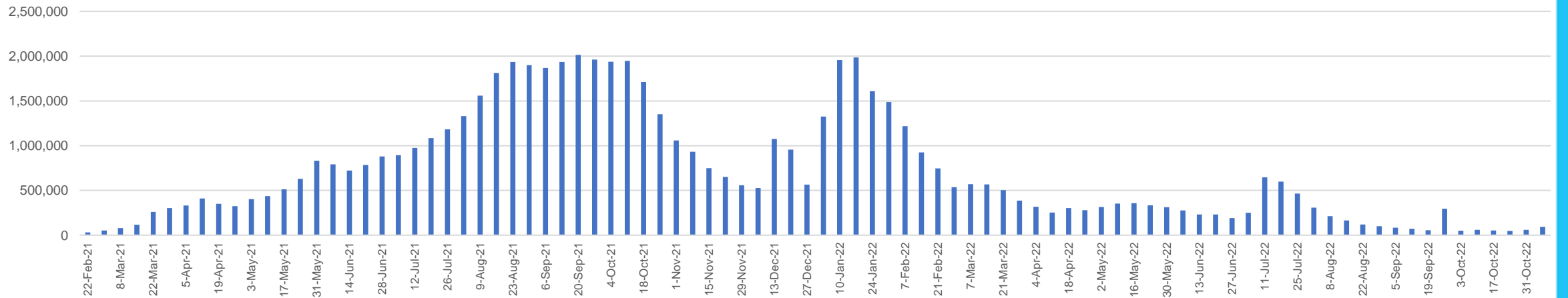
Doses Reported



Doses by administration month and vaccine type



Doses Administered by Week



*Sourced from the Australian Immunisation Register.

Data as at:
16 Nov 2022
Updated weekly

Doses by age and jurisdiction

	AUS	ACT	NSW	NT	QLD	SA	TAS	VIC	WA
5 to 11 - dose 1	1,147,401	30,799	344,044	12,078	197,392	80,068	27,112	311,847	133,597
5 to 11 - dose 2	910,096	27,351	281,774	8,635	151,015	64,201	22,628	246,800	102,364
5 to 11 - population	2,269,663	40,719	711,525	25,120	476,567	149,048	45,549	568,488	252,235
5 to 11 % with dose 1	50.55%	75.64%	48.35%	48.08%	41.42%	53.72%	59.52%	54.86%	52.97%
5 to 11 % with dose 2	40.10%	67.17%	39.60%	34.38%	31.69%	43.07%	49.68%	43.41%	40.58%
12 to 15 - dose 1	1,026,495	20,044	315,019	10,294	199,795	66,917	22,310	267,782	113,182
12 to 15 - dose 2	964,112	19,457	299,379	9,236	185,045	62,807	21,065	254,044	103,958
12 to 15 - population	1,279,387	20,888	399,352	13,190	278,225	85,541	27,469	313,711	140,783
12 to 15 % with dose 1	80.23%	95.96%	78.88%	78.04%	71.81%	78.23%	81.22%	85.36%	80.39%
12 to 15 % with dose 2	75.36%	93.15%	74.97%	70.02%	66.51%	73.42%	76.69%	80.98%	73.84%
16 and over - dose 1	20,061,968	353,004	6,310,078	171,204	3,868,182	1,373,752	442,867	5,164,846	2,098,971
16 and over - dose 2	19,779,901	348,107	6,227,894	167,336	3,811,827	1,348,598	435,212	5,104,452	2,073,047
16 and over - dose 3	14,285,655	280,804	4,376,233	133,176	2,485,824	1,025,452	324,666	3,793,640	1,729,840
16 and over - population	20,629,070	364,811	6,504,442	193,211	4,161,009	1,471,062	465,436	5,279,175	2,185,967
16 and over % with dose 1	97.25%	96.76%	97.01%	88.61%	92.96%	93.39%	95.15%	97.83%	96.02%
16 and over % with dose 2	95.88%	95.42%	95.75%	86.61%	91.61%	91.68%	93.51%	96.69%	94.83%
16 and over % with dose 3	69.25%	76.97%	67.28%	68.93%	59.74%	69.71%	69.76%	71.86%	79.13%
30 and over - dose 1	15,677,119	273,001	4,957,323	126,782	3,020,605	1,091,507	351,547	4,028,290	1,643,301
30 and over - dose 2	15,491,948	269,709	4,901,801	124,613	2,985,228	1,076,208	346,779	3,986,736	1,626,540
30 and over - dose 3	12,083,137	230,179	3,734,050	104,714	2,162,636	876,502	280,523	3,167,558	1,425,422
30 and over - dose 4	5,115,522	110,102	1,631,886	26,506	979,656	405,421	137,328	1,268,906	524,766
30 and over - population	16,012,407	268,806	5,065,001	140,954	3,219,394	1,157,853	368,927	4,079,079	1,709,089
30 and over % with dose 1	97.91%	>99%	97.87%	89.95%	93.83%	94.27%	95.29%	98.75%	96.15%
30 and over % with dose 2	96.75%	>99%	96.78%	88.41%	92.73%	92.95%	94.00%	97.74%	95.17%
30 and over % with dose 3	75.46%	85.63%	73.72%	74.29%	67.18%	75.70%	76.04%	77.65%	83.40%
30 and over % with dose 4	31.95%	40.96%	32.22%	18.80%	30.43%	35.01%	37.22%	31.11%	30.70%
65 and over - dose 1	4,359,914	64,031	1,409,608	20,337	846,500	347,871	114,084	1,087,756	428,183
65 and over - dose 2	4,323,700	63,308	1,398,057	20,088	840,556	345,304	113,407	1,078,363	425,336
65 and over - dose 3	3,976,681	60,029	1,273,707	18,282	772,661	323,878	107,027	984,245	403,837
65 and over - dose 4	2,982,753	49,902	949,557	11,575	593,448	252,239	84,824	719,525	300,998
65 and over - population	4,313,779	60,463	1,393,416	21,593	864,448	352,458	116,037	1,072,562	431,884
65 and over % with dose 1	>99%	>99%	>99%	94.18%	97.92%	98.70%	98.32%	>99%	>99%
65 and over % with dose 2	>99%	>99%	>99%	93.03%	97.24%	97.97%	97.73%	>99%	98.48%
65 and over % with dose 3	92.19%	>99%	91.41%	84.67%	89.38%	91.89%	92.24%	91.77%	93.51%
65 and over % with dose 4	69.14%	82.53%	68.15%	53.61%	68.65%	71.57%	73.10%	67.08%	69.69%

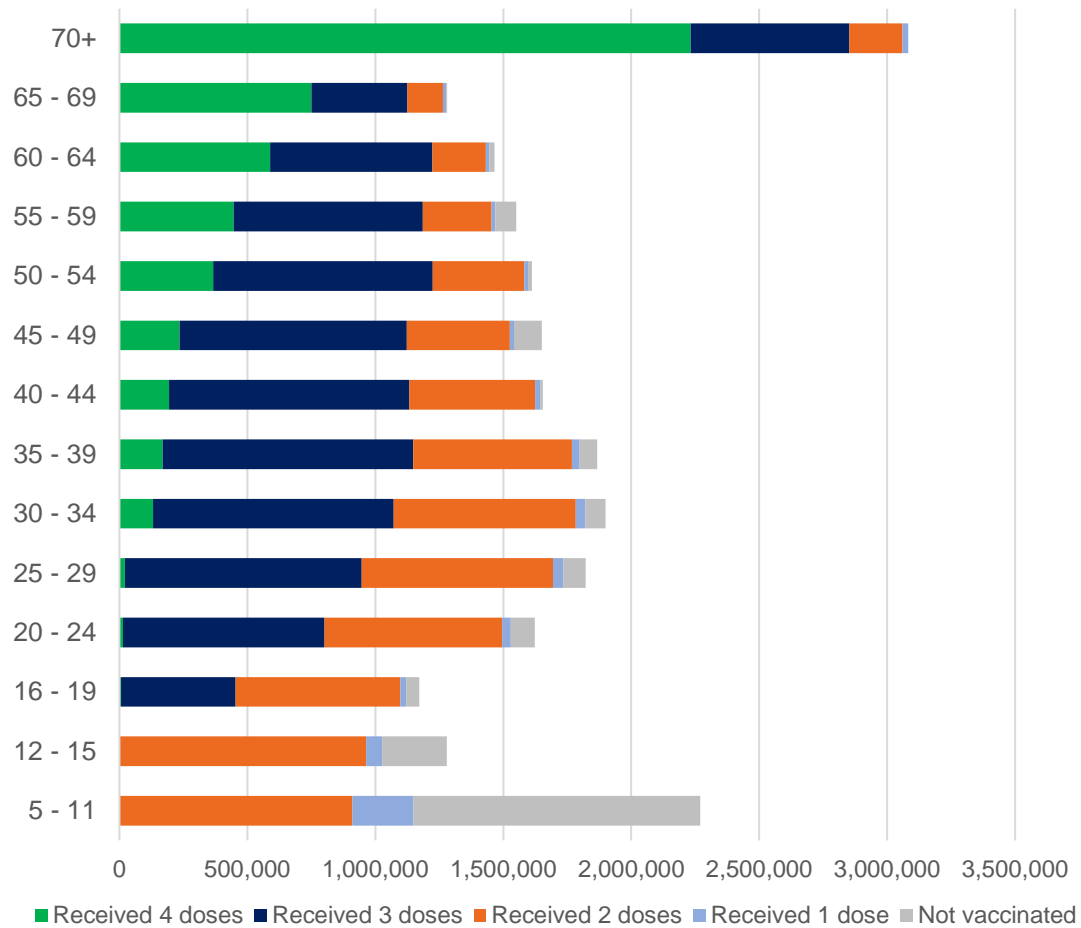
*National population will not equal sum of listed jurisdictions due to a small number of people counted in national population residing in some 'other' territories. Sum of state doses will not add to national total as some records are unable to be geocoded to a State or Territory.

Doses sourced from Australian Immunisation Register, population from ABS ERP June 2021

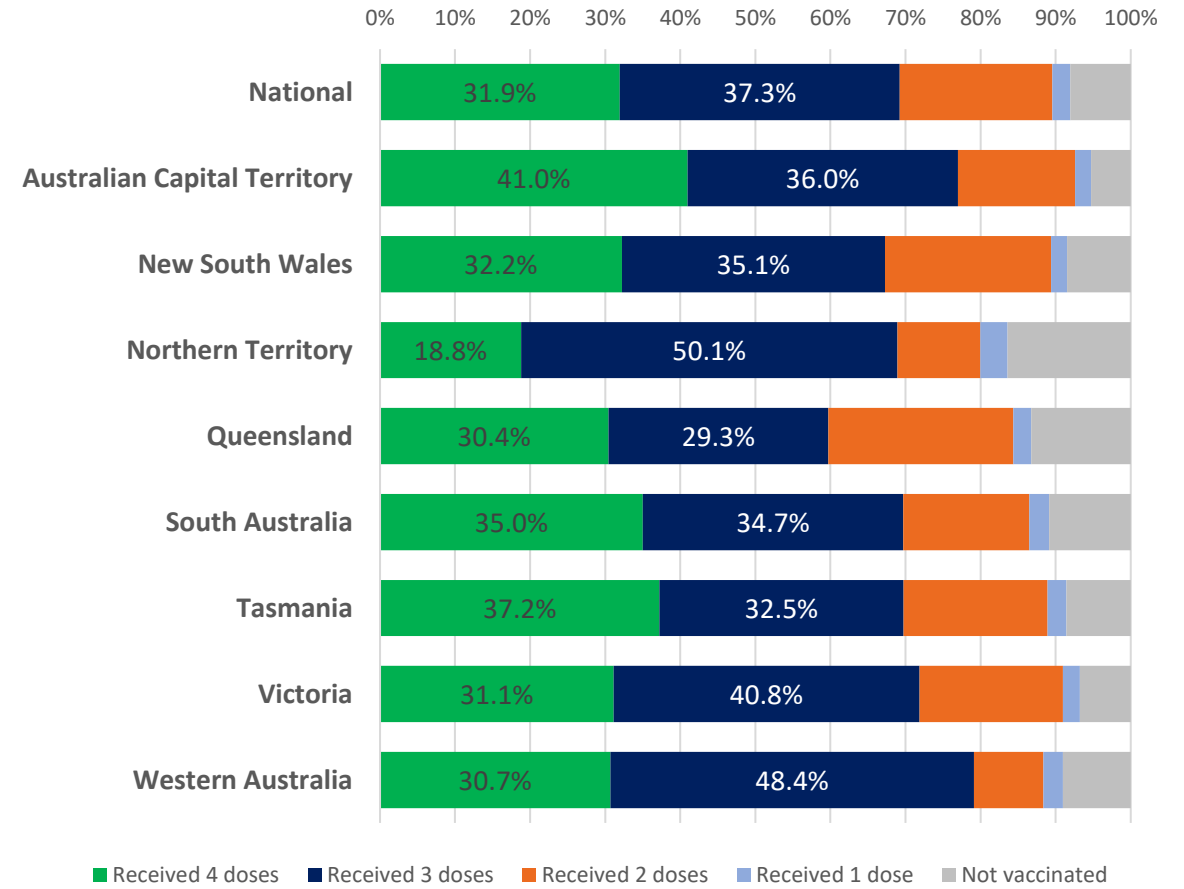
Data as at:
16 Nov 2022
Updated weekly

Vaccinations by age and location

Number of people vaccinated by age

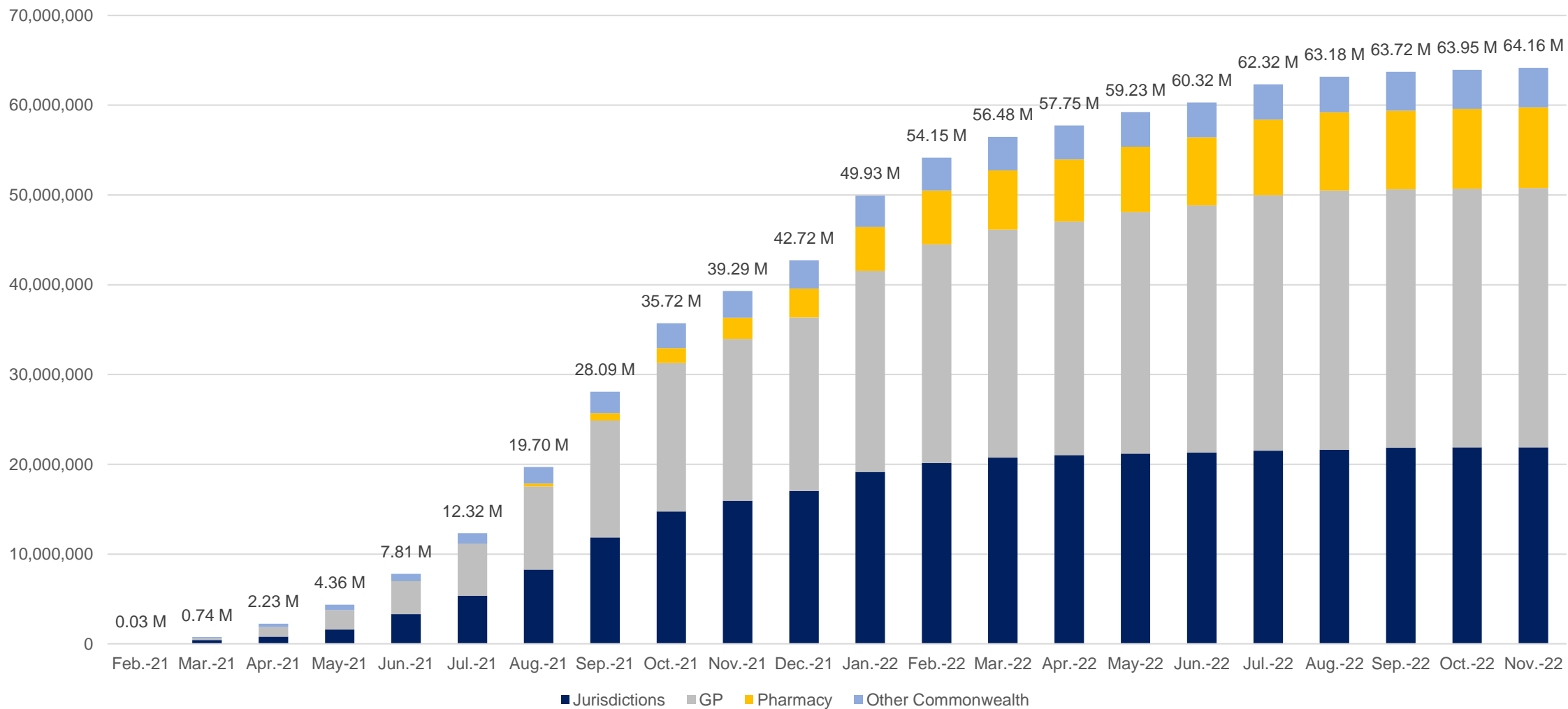


Individuals vaccinated by residential location



Data as at:
16 Nov 2022
Updated weekly

Cumulative doses administered by channel



Source: Australian Immunisation Register

Data as at:
16 Nov 2022
Updated weekly

Commonwealth primary care



Primary care vaccine administration sites#

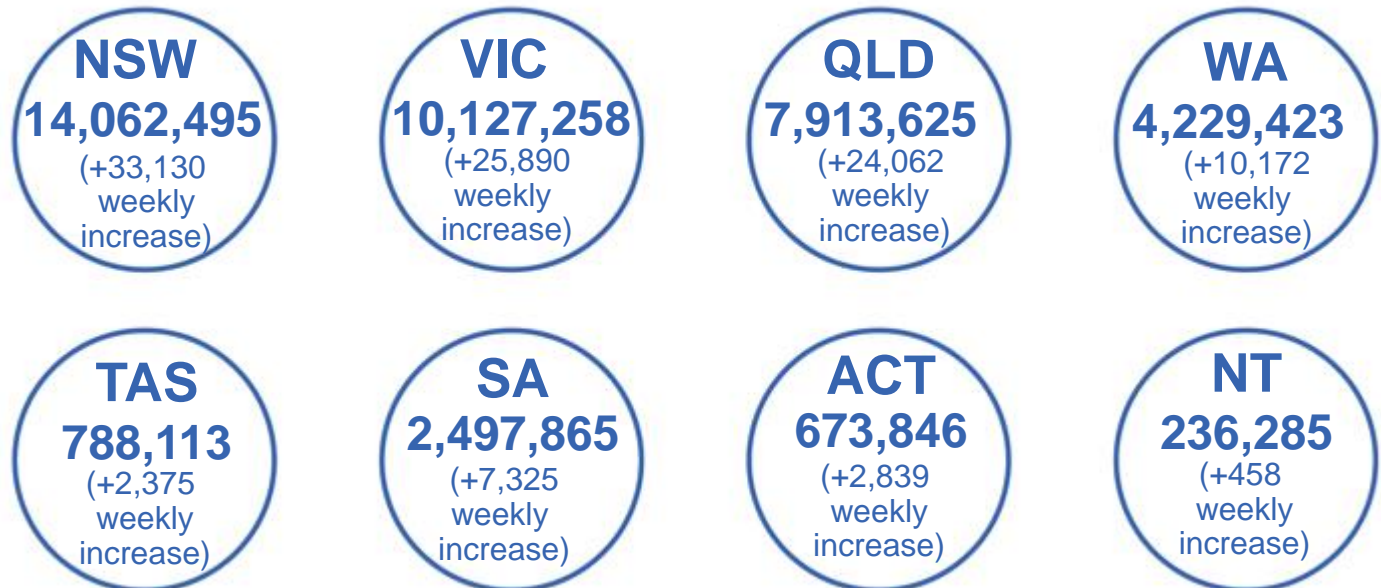
3,513	63	125	2,670
GPs	CVCs	ACCHS	Pharmacies



40,911,469 total vaccine doses administered
in primary care settings
+105,526 weekly increase

Primary care vaccinations by provider type

	Doses administered	Weekly increase
General Practice*	31,856,584	40,694
Pharmacy	9,054,885	64,832



382,559

doses administered to persons residing in other territories or with missing residential information

*General practice includes Commonwealth Vaccination Clinics, Aboriginal Community Health Centres, Royal Flying Doctor Service and other Commonwealth vaccination facilities
Primary care site numbers are reported as at 14 November 2022 and only include active sites.

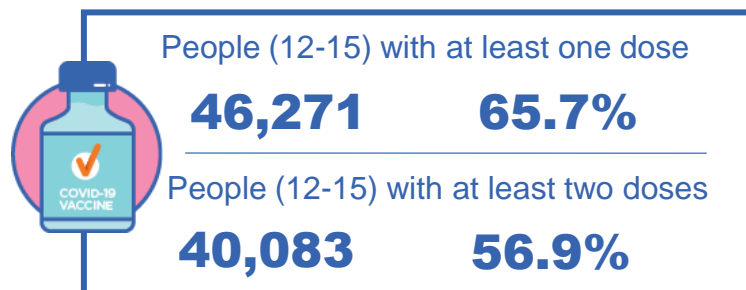
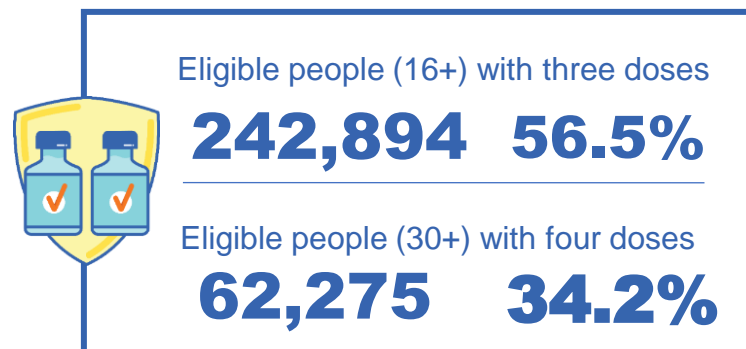
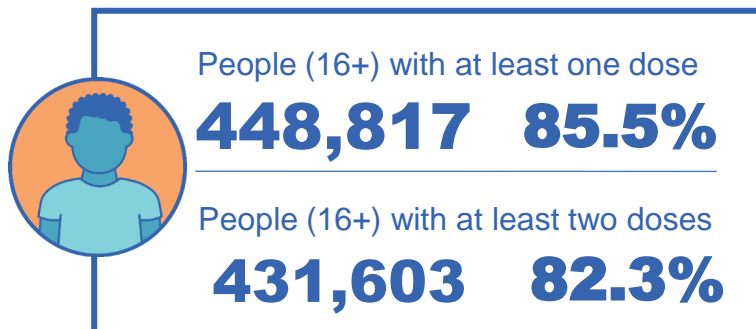
Source: Australian Immunisation Register

Aboriginal and Torres Strait Islander peoples

Number of people vaccinated

Data as at:
16 Nov 2022
Updated weekly

Australia's COVID-19
Vaccine Program



126 Aboriginal community controlled health services (ACCHS) sites

0#	27	20	37	13	2	10	17
ACT	NSW	NT	QLD	SA	TAS	VIC	WA

Residential State	Individuals Dose 1 % (16+)	Individuals Dose 2 % (16+)	Individuals Dose 3 % Eligible (aged 16+)	Individuals Dose 4 % Eligible (aged 30+)
ACT	92.2%	90.0%	65.6%	40.2%
NSW	87.9%	86.1%	53.1%	37.3%
NT	90.2%	86.2%	70.4%	25.3%
QLD	82.4%	78.9%	49.1%	36.7%
SA	81.3%	76.1%	61.1%	37.5%
TAS	89.2%	86.9%	60.2%	40.7%
VIC	90.9%	89.0%	62.3%	35.4%
WA	87.6%	82.3%	66.6%	29.2%
Unknown/Other Territories	73.4%	68.3%	51.1%	23.7%
National Coverage %	85.5%	82.3%	56.5%	34.2%
Number with a Dose	448,817	431,603	242,894	62,275
Total / Eligible Population	524,698	524,698	430,257	181,984

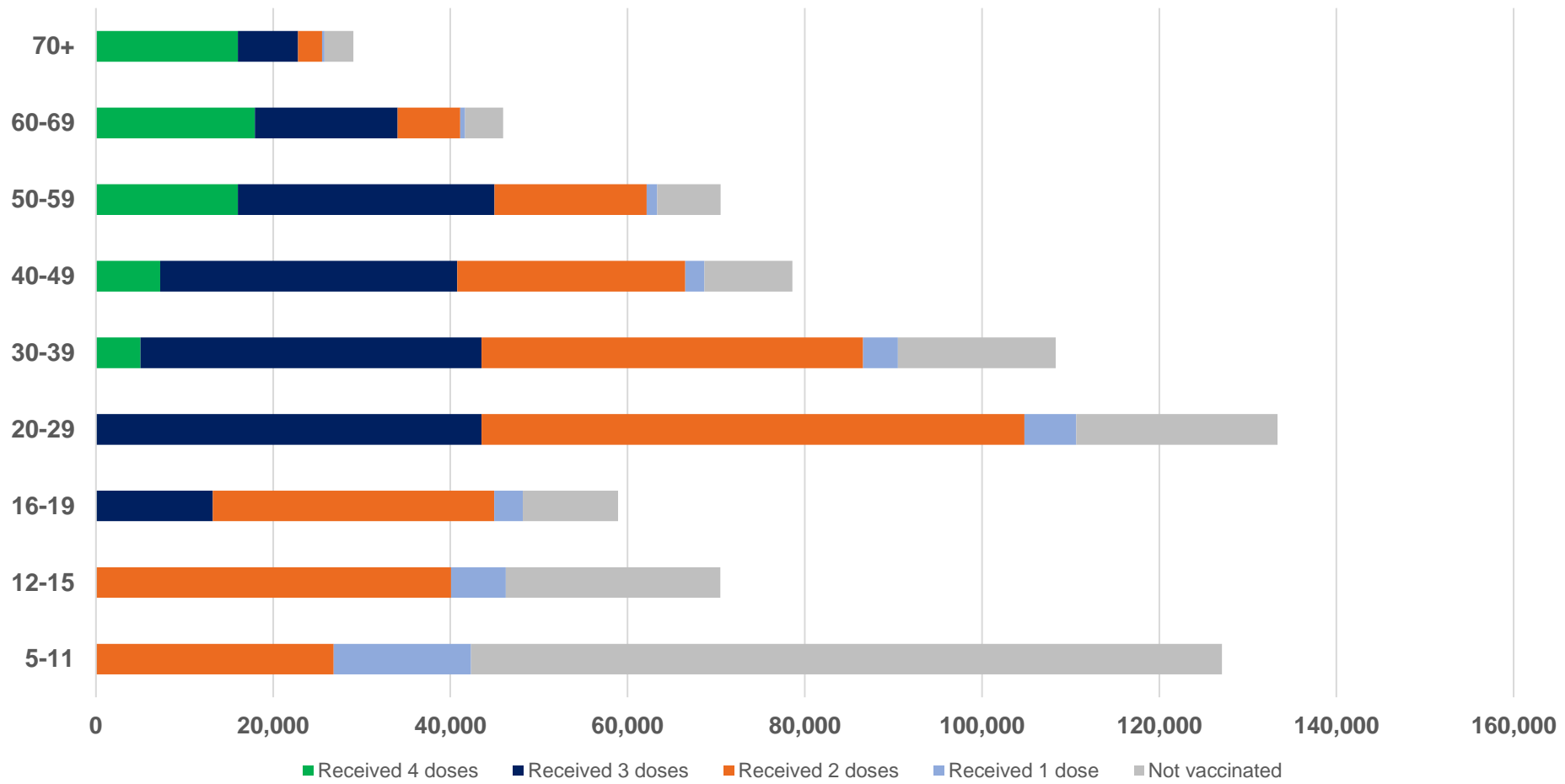
Identifying as Aboriginal and Torres Strait Islander is optional and the estimated population may be under reported. Numbers include all Aboriginal and Torres Strait Islander peoples who have received a vaccination, and are not limited to those administered in an ACCHS setting. The total population refers to the number of individuals that identify as Aboriginal and Torres Strait Islander in the Australian Immunisation Register, while the eligible population refers to the number of these individuals who meet the criteria for a further dose (based on completion of previous doses, age, and time period elapsed since last dose). Please note there may be people under 30 who are eligible, but these are not included in coverage rates or population to protect privacy.

#ACCHS in the ACT are currently operating as Commonwealth Vaccine Clinics so not included to avoid double counting.

Aboriginal and Torres Strait Islander peoples

Number of people vaccinated by age

Data as at:
16 Nov 2022
Updated weekly



Source: Australian Immunisation Register

Individuals with Culturally and Linguistically Diverse (CALD) backgrounds data

Data as at:
6 November 2022
Updated weekly

Australia's COVID-19
Vaccine Program

People over the age of 16

CALD population *	Total number of individuals in cohort	% People with at least one dose	% People who received two doses	% of eligible people who received three or more doses
General population	20,629,070	>95.0%	>95.0%	72.2%
People born overseas	4,310,597	94.7%	94.1%	73.5%
Speaks a language other than English at home	3,990,800	94.2%	93.6%	69.4%

	General population			Born Overseas			Speaks a language other than English at home		
	% with at least one dose	% who received two doses	% of eligible people who received three or more doses	% with at least one dose	% who received two doses	% of eligible people who received three or more doses	% with at least one dose	% who received two doses	% of eligible people who received three or more doses
ACT	>95.0%	>95.0%	80.7%	>95.0%	>95.0%	79.2%	>95.0%	>95.0%	76.6%
NSW	>95.0%	>95.0%	70.3%	>95.0%	94.5%	71.0%	94.2%	93.6%	66.3%
NT	88.6%	86.6%	79.6%	>95.0%	94.8%	88.4%	94.2%	93.7%	87.2%
Qld	92.9%	91.6%	65.2%	92.3%	91.6%	68.0%	92.6%	91.8%	64.6%
SA	93.4%	91.7%	76.1%	92.9%	92.0%	75.7%	91.9%	90.9%	72.0%
Tas	>95.0%	93.5%	74.6%	93.8%	93.2%	76.5%	93.8%	93.2%	72.6%
Vic	>95.0%	>95.0%	74.3%	>95.0%	94.9%	73.7%	94.8%	94.3%	69.8%
WA	>95.0%	94.8%	83.5%	>95.0%	94.7%	85.7%	>95.0%	94.8%	83.8%

*Individuals with Culturally and Linguistically Diverse (CALD) backgrounds are as reported in the 2021 Census, excluding those who have since departed Australia; deceased persons; those born in the UK, Ireland or NZ; and Aboriginal and/or Torres Strait Islander peoples. There is overlap across CALD cohorts where individuals may have reported they had more than one CALD characteristic in the 2021 Census.

Small negative changes may appear when compared with the previous report due to perturbation, in particular for small population groups.

Source: Australian Immunisation Register linked to the Multi-Agency Data Integration Project (Census 2021 characteristics). Coverage rates for the general population are as published for 9 November 2022.

Data as at:
17 Nov 2022
Updated weekly

Residential aged care vaccination rollout



170,533

Aged care residents with at least one dose



169,209

Aged care residents with at least two doses



162,673

Aged care residents with at least three doses



131,487

Aged care residents with at least four doses



>99%

Aged care workers with at least two doses nationally

Aged care resident vaccinations

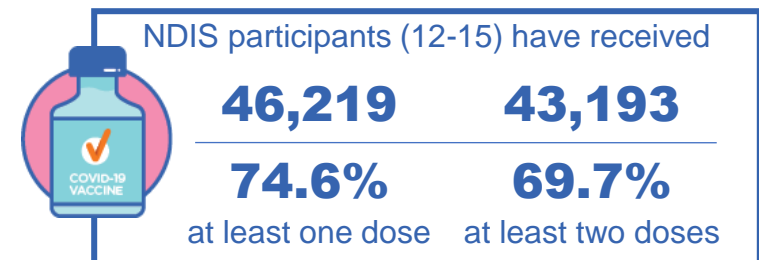
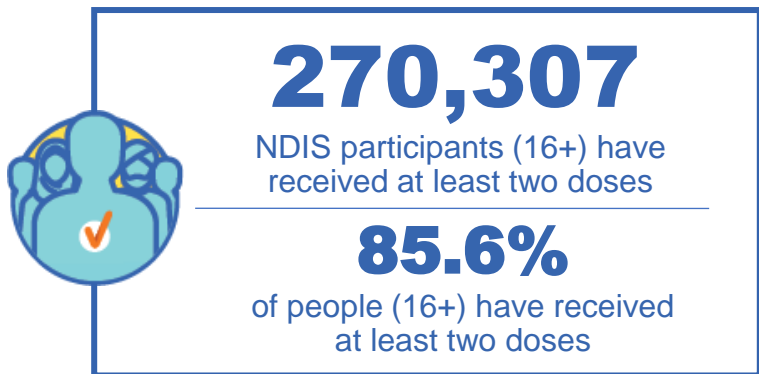
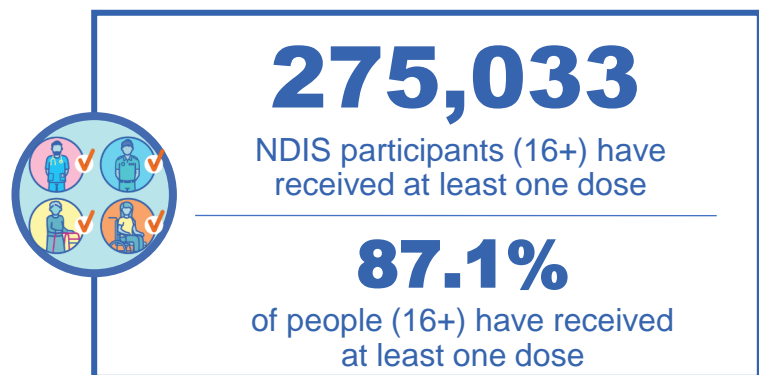
	Aged care residents with at least one dose	Aged care residents with at least two doses	Aged care residents with at least three doses	Aged care residents with at least four doses
NSW	96.9%	96.2%	92.4%	73.1%
VIC	96.9%	96.3%	93.3%	79.1%
QLD	95.1%	94.3%	90.2%	71.5%
SA	96.0%	94.7%	90.8%	73.1%
WA	96.9%	96.0%	91.9%	72.2%
TAS	95.9%	95.0%	91.5%	74.5%
NT	96.9%	95.1%	90.0%	68.2%
ACT	98.0%	97.4%	95.0%	82.1%
National	96.4%	95.7%	92.0%	74.4%

Source: Residential aged care provider self-reported COVID-19 vaccination information and matched AIR data of residents in permanent residential RACFs.

National Disability Insurance Scheme (NDIS) reported vaccinations

Data as at:
13 Nov 2022
Updated weekly

Australia's COVID-19
Vaccine Program



NDIS participant vaccinations

	% People aged 16+ with at least one dose	% People aged 16+ with at least two doses	% People aged 16+ with three doses	% People aged 16+ with four doses
ACT	89.6%	88.5%	83.5%	38.0%
NSW	87.7%	86.4%	75.2%	34.9%
NT	78.1%	75.8%	79.2%	26.9%
QLD	85.2%	83.6%	71.4%	29.1%
SA	85.1%	83.2%	78.4%	30.5%
TAS	87.7%	85.8%	76.5%	31.2%
VIC	88.3%	86.9%	77.4%	32.2%
WA	88.5%	86.9%	82.0%	32.7%
National	87.1%	85.6%	76.2%	32.3%

Source: Linkage between National Disability Insurance Agency data and the Australian Immunisation Register. Total NDIS participant numbers as at 01 November. Australian Immunisation Register data as at 13 November. Includes all participants regardless of residence type.