

4.9 Northern Territory

Table NT1
Indicators of mental health reform in Northern Territory^{a,b,c}

INDICATOR	NORTHERN TERRITORY			AUSTRALIA
	1992-93	2007-08	2010-11	2010-11
A. STATE GOVERNMENT EXPENDITURE				
State spending on mental health services (\$millions)	14	36	43	4,188
State spending per capita (\$)	82	167	187	189
Per capita spending rank (1=highest to 8=lowest)	7	5	5	
Average annual per capita spending growth since preceding milestone year (%)		5.1	3.8	4.1
B. SERVICE MIX				
% total service expenditure – Community services	44	65	64	55
– Stand-alone psychiatric hospitals	-	-	-	13
– Colocated general hospitals	56	35	36	32
C. INPATIENT SERVICES				
Total hospital beds	41	34	33	6,755
Per capita expenditure on inpatient care (\$)	43	58	62	81
Inpatient beds per 100,000	24	16	14	30
Acute inpatient beds per 100,000	15	16	14	20
Non acute inpatient beds per 100,000	8.8	-	-	9.7
Stand-alone psychiatric hospitals as % of total beds	-	-	-	31
Average cost per patient day (\$)	717	1,149	1,242	842
D. COMMUNITY SERVICES				
Ambulatory care – % total service expenditure	43	51	52	41
– Per capita expenditure (\$)	34	85	91	74
NGOs – % total service expenditure	1.1	13.5	12.1	9.3
– Per capita expenditure (\$)	1	22	21	17
Residential services – % total service expenditure	-	1.4	3.6	6.0
– Per capita expenditure (\$)	-	2	6	11
– Adult beds per 100,000: 24 hour staffed	-	3.4	9.6	6.0
Non-24 hour staffed	n.a.	-	-	5.0
– Older persons' beds per 100,000: 24 hour staffed	-	-	-	23
Non-24 hour staffed	n.a.	-	-	0.4
Supported public housing places per 100,000	n.a.	15	25	22
E. DIRECT CARE WORKFORCE				
Number Full-time Equivalent (FTE) staff	120	168	205	24,292
FTE per 100,000	71	77	89	108
FTE per 100,000 – ambulatory services	26	44	44	47
F. IMPLEMENTATION OF NATIONAL SERVICE STANDARDS				
% service expenditure covered by Level 1 services	..	100	100	84
G. CONSUMER AND CARER PARTICIPATION				
% services with Level 1 consumer committee representation	-	100	100	55
% total mental health workforce accounted for by consumer workers	n.a.	-	-	0.28
% total mental health workforce accounted for by carer workers	n.a.	-	-	0.18
H. MEDICARE SUBSIDISED MENTAL HEALTH SERVICES				
% population seen – all MBS funded providers (Psychiatrists, GPs, allied health)	n.a.	1.8	2.9	6.9
% population seen – GPs	n.a.	1.4	2.4	5.4
% population seen – Consultant Psychiatrists	0.1	0.3	0.4	1.3
% population seen – Clinical Psychologists	-	0.1	0.3	1.1
% population seen – Registered Psychologists and Other allied health professionals	-	0.4	0.7	2.1
Total MBS mental health related benefits paid per capita (\$)	n.a.	6	11	38
I. PBS-FUNDED PHARMACEUTICALS (including RPBS)				
Total PBS/RPBS benefits paid per capita (\$)	1	13	14	38

(a) 'n.a.' Signifies that the indicator is not available because relevant national data were not collected;
(b) '..' Indicates that the indicator is not applicable for the year on a comparable basis to other reported years;
(c) '-' Indicates zero.

Figure NT1
Overall spending on mental health

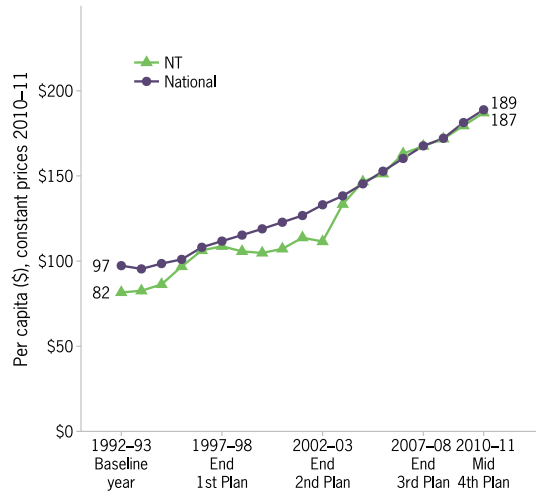


Figure NT2
Change in spending mix

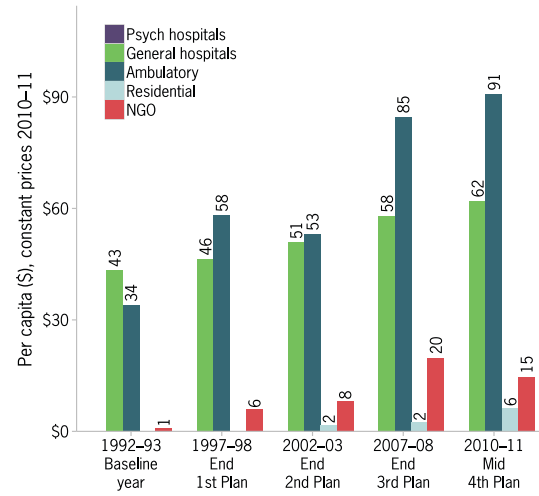


Figure NT3
Changes in inpatient services

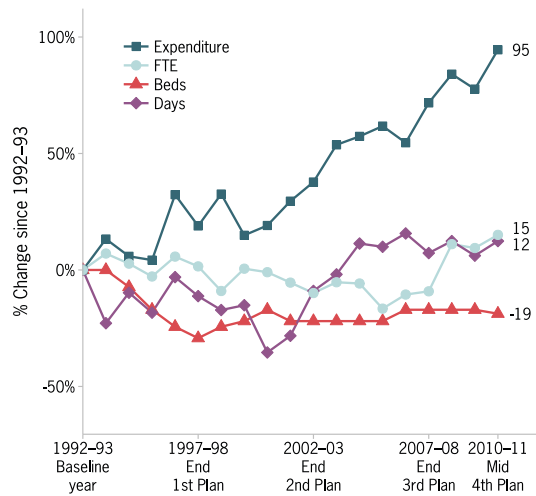


Figure NT4
Changes in ambulatory care

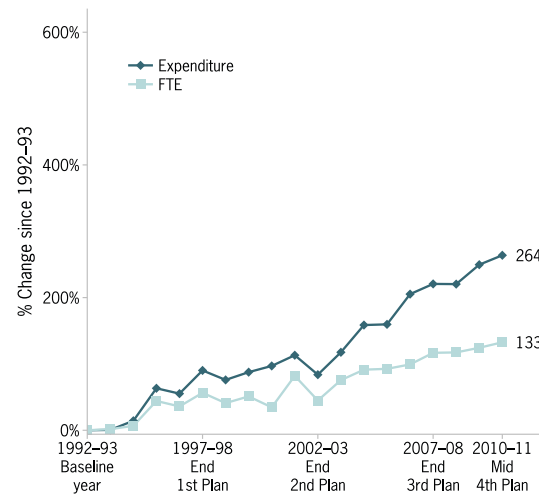


Figure NT5
Direct care workforce

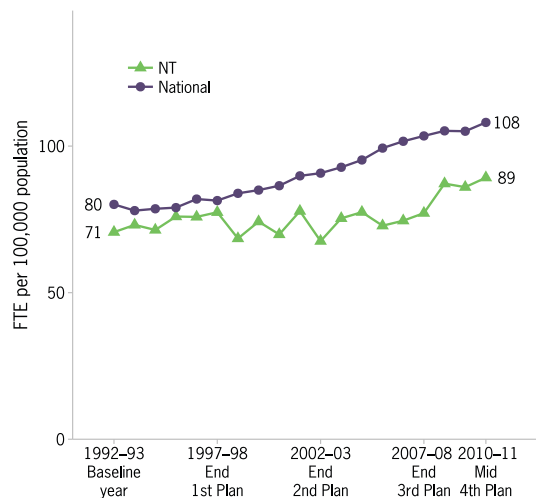


Figure NT6
Inpatient and residential beds

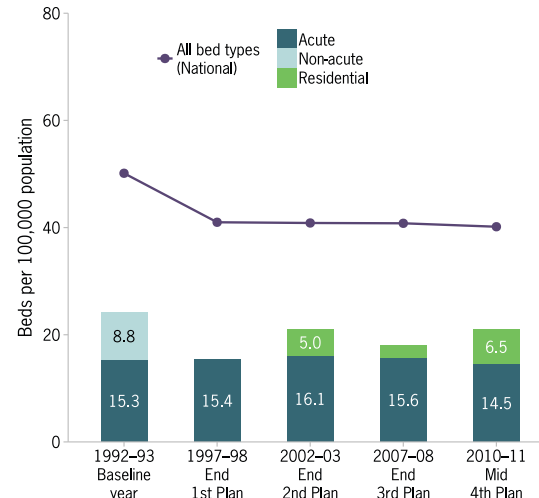


Figure NT7
Trends in provision of public sector specialised beds – acute and non-acute beds per 100,000

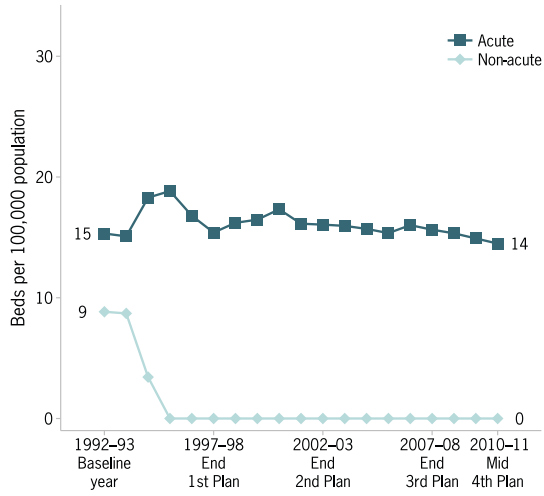


Figure NT8
Readmission to hospital within 28 days of discharge



Figure NT9
Rates of pre-admission community care

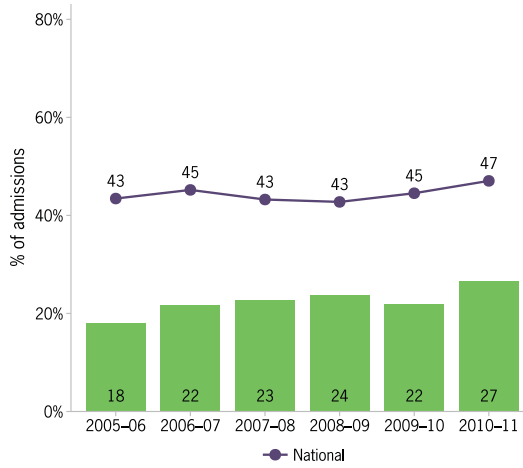


Figure NT10
Rates of post-discharge community care

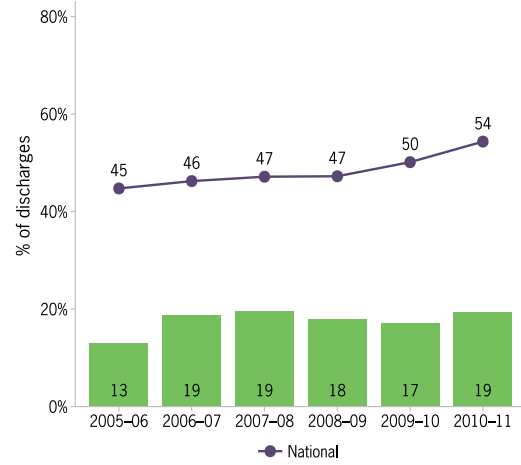


Figure NT11
Average treatment days per three month community care period

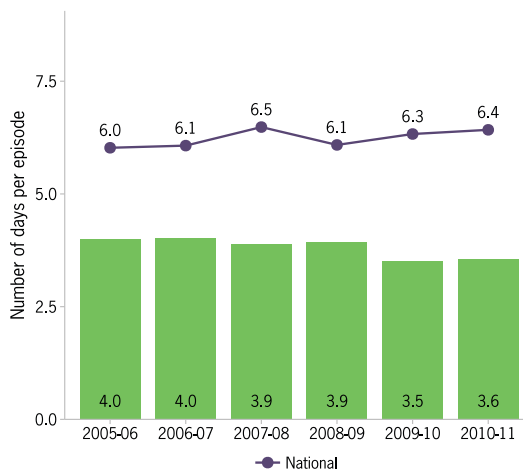


Figure NT12
Percentage of population receiving state or territory mental health services

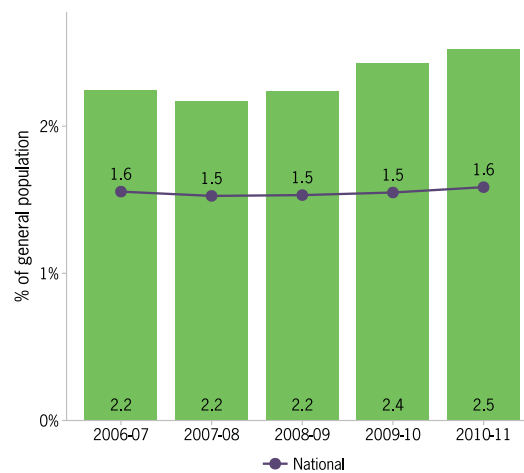


Figure NT13
Percentage of population receiving MBS-subsidised mental health services

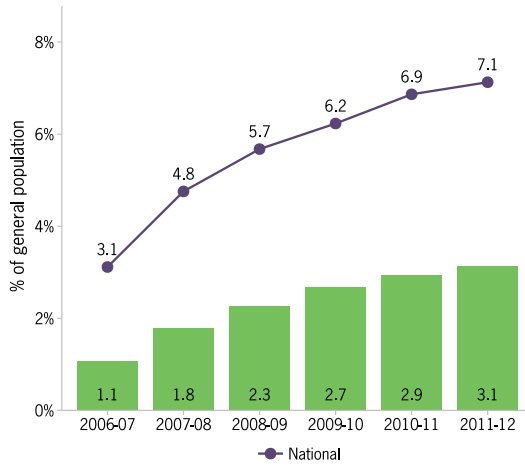


Figure NT14
New clients as a proportion of total clients under the care of state or territory specialised public mental health services

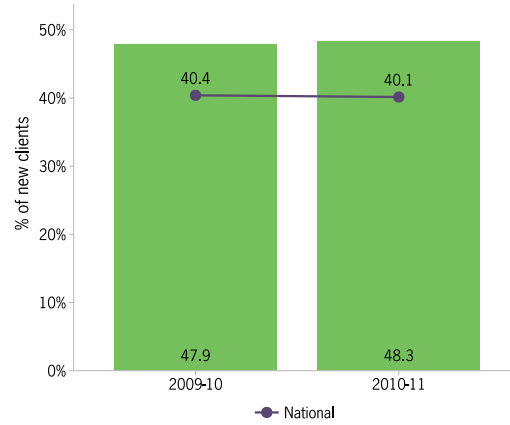


Figure NT15
Mental health outcomes for people who receive treatment from state or territory services

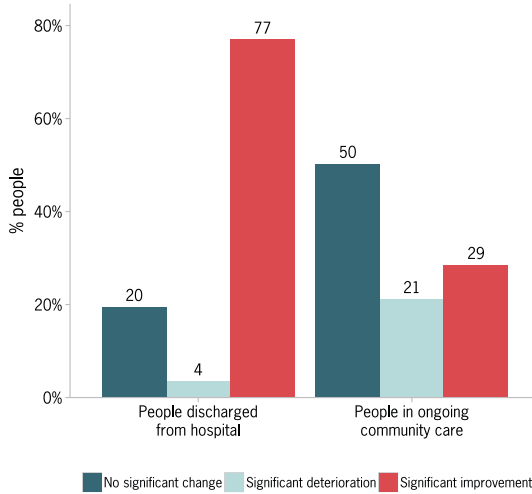


Figure NT16
Proportion of total mental health workforce accounted for by consumer and carer workers

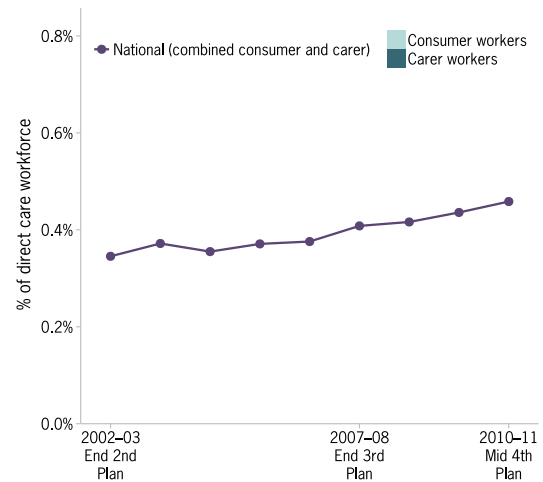


Figure NT17
Proportion of services reaching threshold standards of accreditation under the National Mental Health Standards

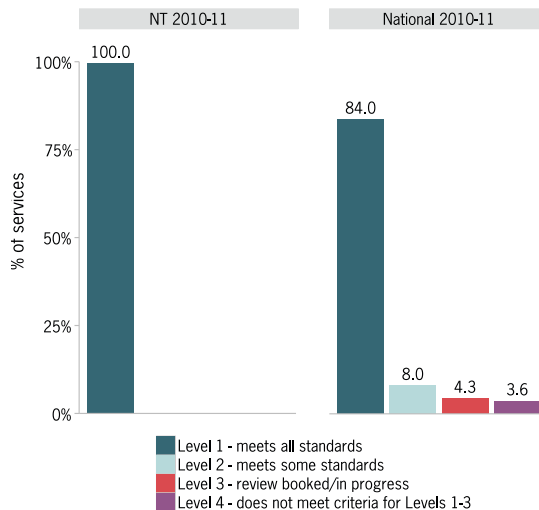


Figure NT18
Percentage of mental health consumers living in stable housing

