

4.5 Western Australia

Table WA1
Indicators of mental health reform in Western Australia^{a,b,c}

INDICATOR	WESTERN AUSTRALIA			AUSTRALIA
	1992-93	2007-08	2010-11	2010-11
A. STATE GOVERNMENT EXPENDITURE				
State spending on mental health services (\$millions)	164	434	523	4,188
State spending per capita (\$)	98	203	225	189
Per capita spending rank (1=highest to 8=lowest)	4	1	2	
Average annual per capita spending growth since preceding milestone year (%)		5.0	3.6	4.1
B. SERVICE MIX				
% total service expenditure – Community services	28	54	53	55
– Stand-alone psychiatric hospitals	50	17	16	13
– Colocated general hospitals	23	29	30	32
C. INPATIENT SERVICES				
Total hospital beds	728	670	700	6,755
Per capita expenditure on inpatient care (\$)	71	92	101	81
Inpatient beds per 100,000	44	31	30	30
Acute inpatient beds per 100,000	24	25	23	20
Non acute inpatient beds per 100,000	19.9	5.8	7.3	9.7
Stand-alone psychiatric hospitals as % of total beds	70	37	35	31
Average cost per patient day (\$)	488	897	1,017	842
D. COMMUNITY SERVICES				
Ambulatory care – % total service expenditure	22	46	44	41
– Per capita expenditure (\$)	22	93	95	74
NGOs – % total service expenditure	2.5	6.5	8.7	9.3
– Per capita expenditure (\$)	2	13	19	17
Residential services – % total service expenditure	2.8	2.4	3.5	6.0
– Per capita expenditure (\$)	3	5	8	11
– Adult beds per 100,000: 24 hour staffed	8.1	3.8	4.9	6.0
Non-24 hour staffed	n.a.	5.6	14.0	5.0
– Older persons' beds per 100,000: 24 hour staffed	-	-	-	23
Non-24 hour staffed	n.a.	-	-	0.4
Supported public housing places per 100,000	n.a.	31	62	22
E. DIRECT CARE WORKFORCE				
Number Full-time Equivalent (FTE) staff	1,475	2,536	2,852	24,292
FTE per 100,000	88	119	123	108
FTE per 100,000 – ambulatory services	17	49	51	47
F. IMPLEMENTATION OF NATIONAL SERVICE STANDARDS				
% service expenditure covered by Level 1 services	..	39	49	84
G. CONSUMER AND CARER PARTICIPATION				
% services with Level 1 consumer committee representation	6	37	29	55
% total mental health workforce accounted for by consumer workers	n.a.	0.05	0.12	0.28
% total mental health workforce accounted for by carer workers	n.a.	0.03	0.03	0.18
H. MEDICARE SUBSIDISED MENTAL HEALTH SERVICES				
% population seen – all MBS funded providers (Psychiatrists, GPs, allied health)	n.a.	4.0	5.6	6.9
% population seen – GPs	n.a.	3.0	4.4	5.4
% population seen – Consultant Psychiatrists	0.9	1.0	1.0	1.3
% population seen – Clinical Psychologists	-	1.0	1.4	1.1
% population seen – Registered Psychologists and Other allied health professionals	-	0.6	1.1	2.1
Total MBS mental health related benefits paid per capita (\$)	n.a.	23	30	38
I. PBS-FUNDED PHARMACEUTICALS (including RPBS)				
Total PBS/RPBS benefits paid per capita (\$)	3	30	32	38

(a) 'n.a.' Signifies that the indicator is not available because relevant national data were not collected;

(b) '..' Indicates that the indicator is not applicable for the year on a comparable basis to other reported years;

(c) '-' Indicates zero.

Figure WA1
Overall spending on mental health

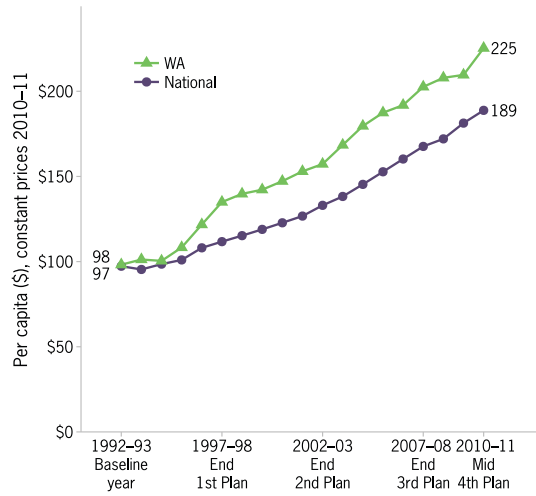


Figure WA2
Change in spending mix

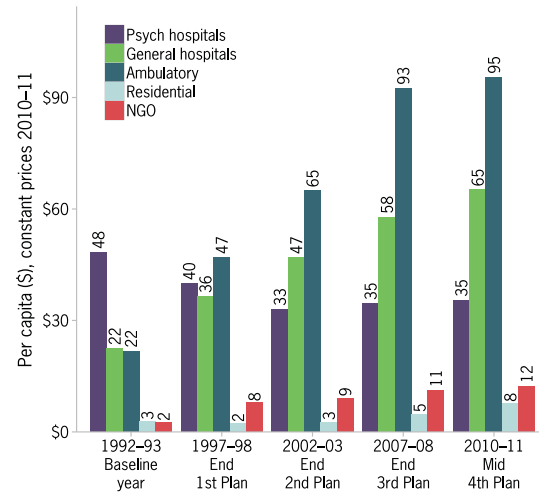


Figure WA3
Changes in inpatient services

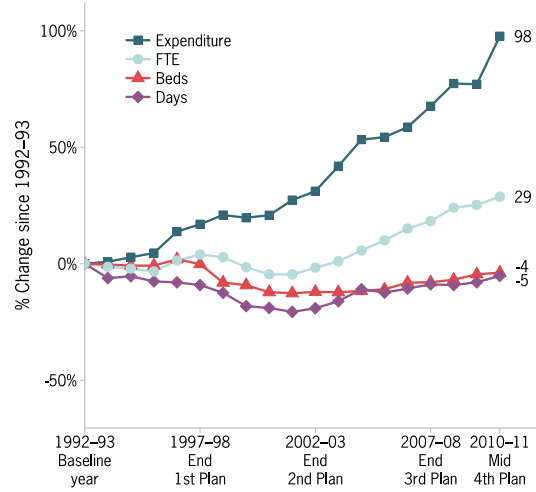


Figure WA4
Changes in ambulatory care

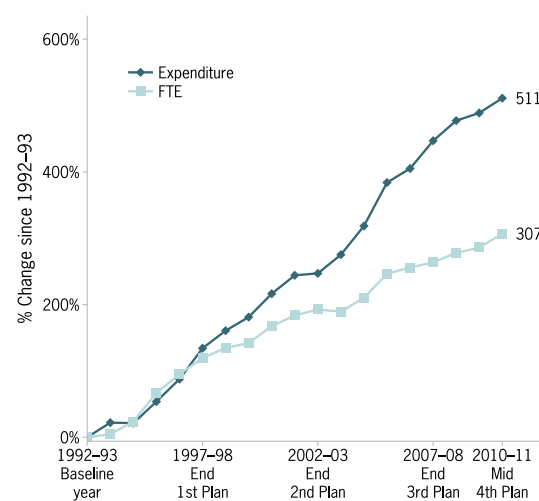


Figure WA5
Direct care workforce

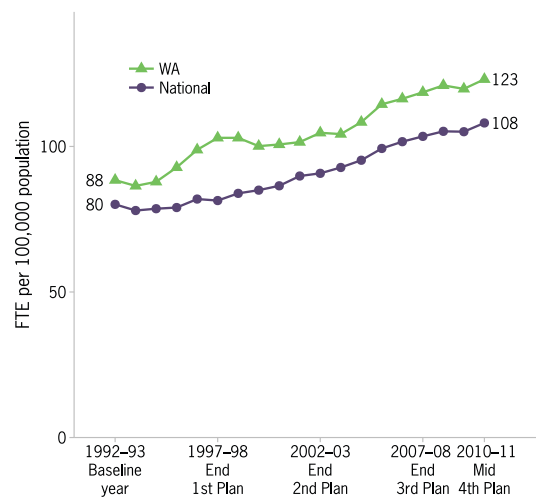


Figure WA6
Inpatient and residential beds

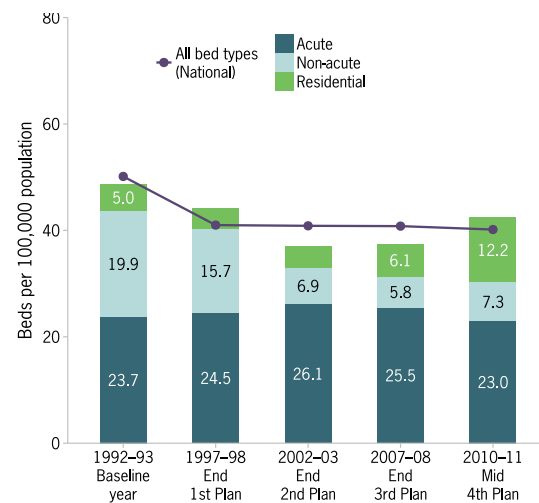


Figure WA7
Trends in provision of public sector specialised beds – acute and non-acute beds per 100,000

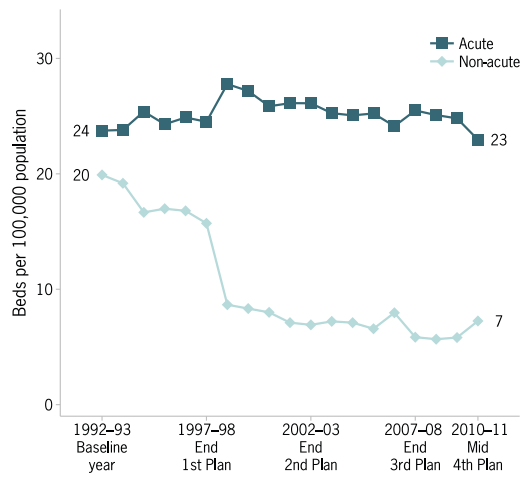


Figure WA8
Readmission to hospital within 28 days of discharge



Figure WA9
Rates of pre-admission community care

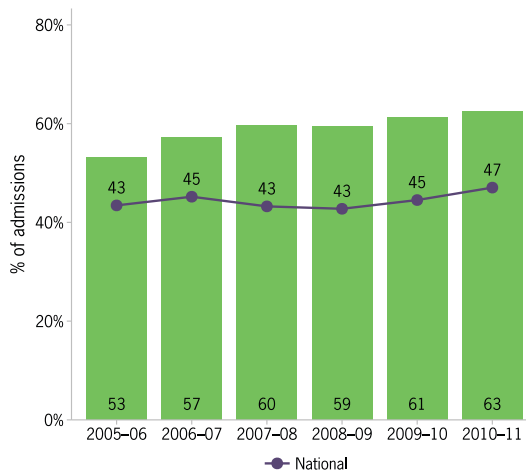


Figure WA10
Rates of post-discharge community care

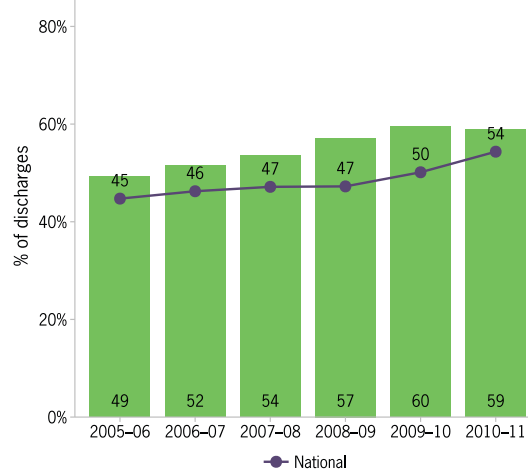


Figure WA11
Average treatment days per three month community care period

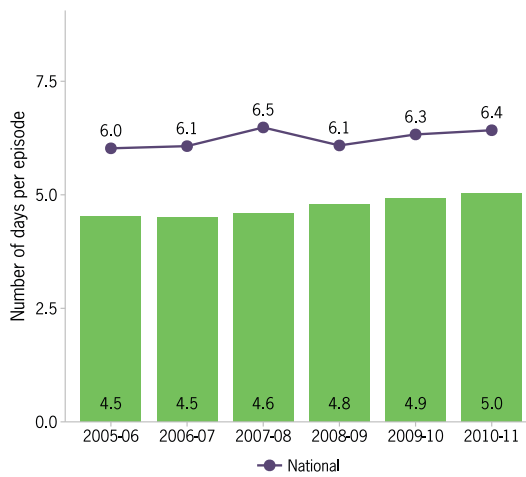


Figure WA12
Percentage of population receiving state or territory mental health services

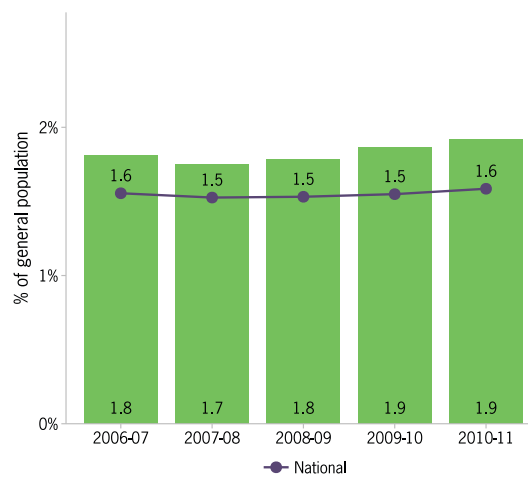


Figure WA13
Percentage of population receiving MBS-subsidised mental health services

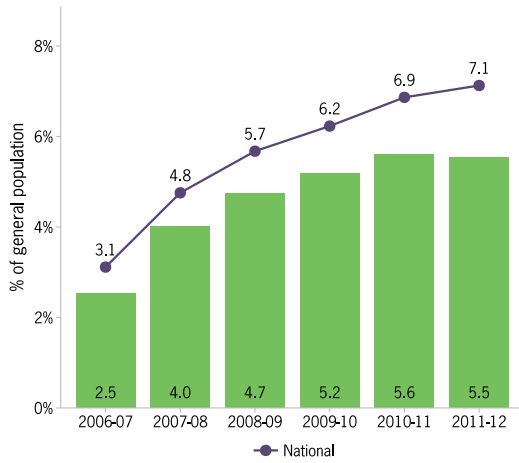


Figure WA14
New clients as a proportion of total clients under the care of state or territory specialised public mental health services



Figure WA15
Mental health outcomes for people who receive treatment from state or territory services

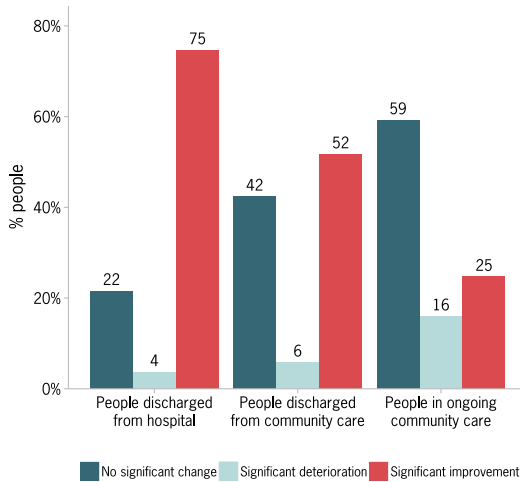


Figure WA16
Proportion of total mental health workforce accounted for by consumer and carer workers

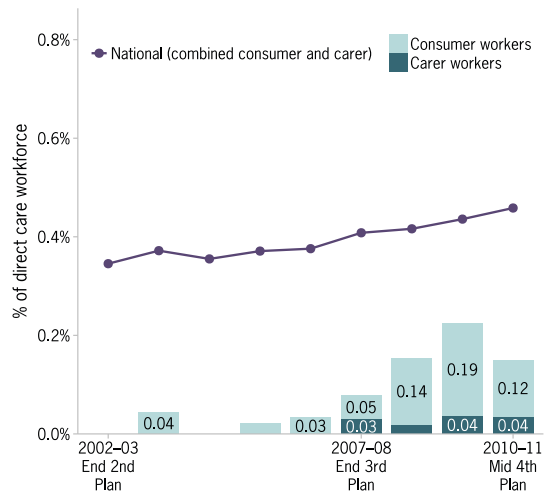


Figure WA17
Proportion of services reaching threshold standards of accreditation under the National Mental Health Standards



Figure WA18
Percentage of mental health consumers living in stable housing

